



# Central

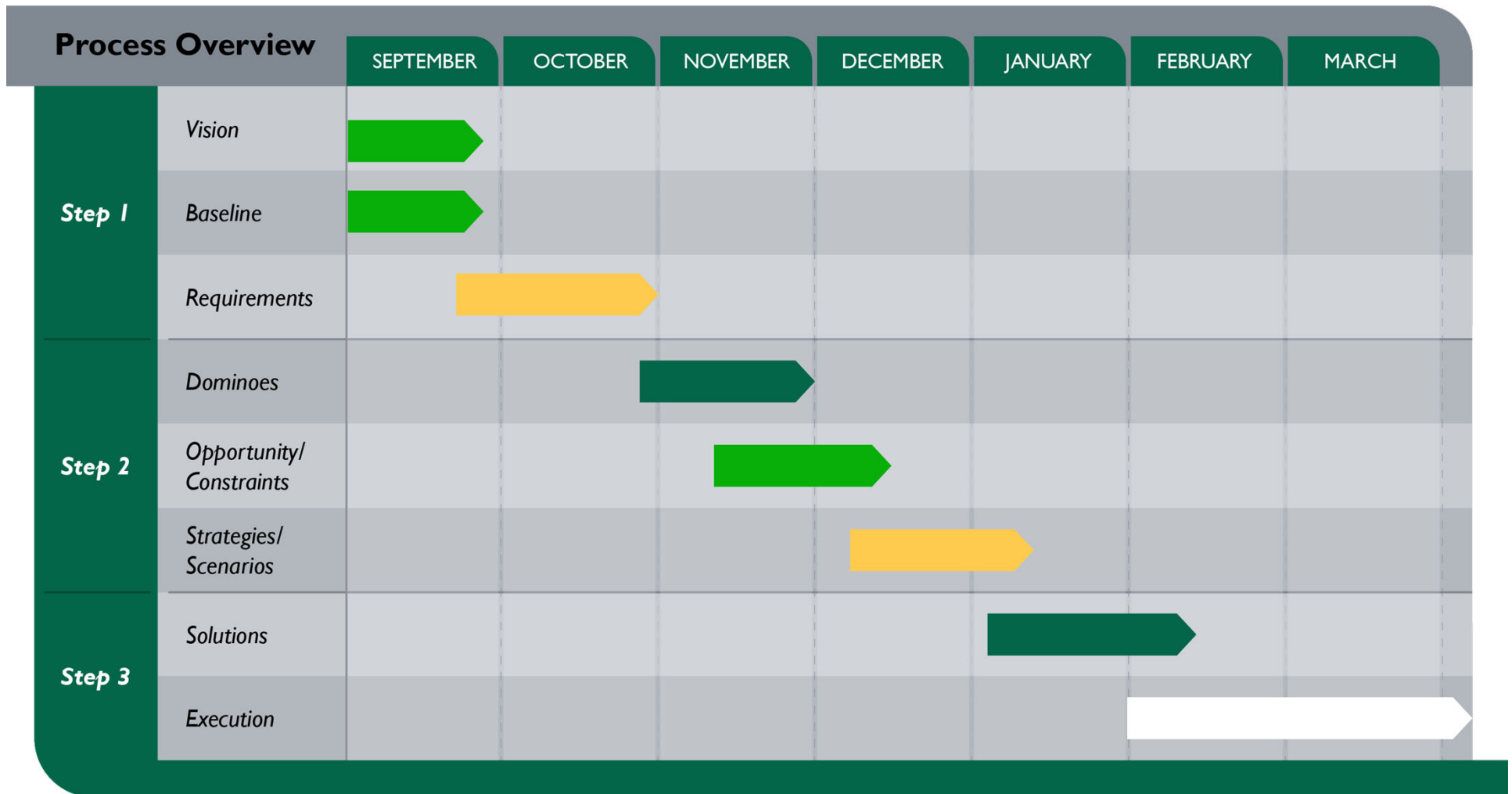
COMMUNITY  
COLLEGE

## 2022 | 5 Year Physical Master Plan



**WILKINS**

ARCHITECTURE | DESIGN | PLANNING



## Board of Governor Considerations:

1. Are there gaps in instructional programs or services that relate to our facilities that you are hearing about in the communities?
2. Are there centers of excellence in instructional programs or services that related to our facilities that you are hearing about in our communities?
3. Are there opportunities or partnerships to continue to expand services to additional communities within our 25-county area?
4. If you have something specific (concern or compliment) about faculties on a specific campus or center please feel free to mention

## College Goals, Vision for next 5 Years

- Spaces to “Better Serve Students” and “Better Serve Community”
- “One-Stop-Shops” for students.
  - Welcome Centers
  - Student Unions
  - Academic Success Centers
- Create adjacencies for ease of use, direction, visibility, and consolidation of resources.
- Create program “Hubs” to generate program identities, visibility, ease of access, and consolidation of resources.
- Faculty Service Needs:
  - Remoting Teaching Rooms / Faculty Suites / Learning Support Services (LSS) / Faculty Resource Center (FRC)

## Projects Identified

Grand Island	Columbus	Hastings	Centers
<ul style="list-style-type: none"> <li>1) Business (200 wing) Remodel</li> <li>2) Academic Success Center/Student Services (Phase 2)</li> <li>3) New Facilities Building</li> <li>4) Housing</li> <li>5) Welding Expansion</li> </ul>	<ul style="list-style-type: none"> <li>1) Student Union + Welcome Center</li> <li>2) Administration Building Remodel</li> <li>3) Mechatronics Expansion at North Ed</li> <li>4) Lower-Level Student Center Remodel</li> <li>5) PEC Building Updates</li> </ul>	<ul style="list-style-type: none"> <li>1) Phelps Remodel</li> <li>2) Dawson Remodel for Student Welcome Center and Academic Success</li> <li>3) Nuckolls Remodel</li> <li>4) Furnas Building Replacement (Autobody &amp; Automotive Growth)</li> <li>5) Kearney &amp; Merrick Building Updates</li> </ul>	<p>Kearney</p> <ul style="list-style-type: none"> <li>1) Nursing Classroom Space</li> <li>2) Expand Student Services/ Offices</li> </ul>

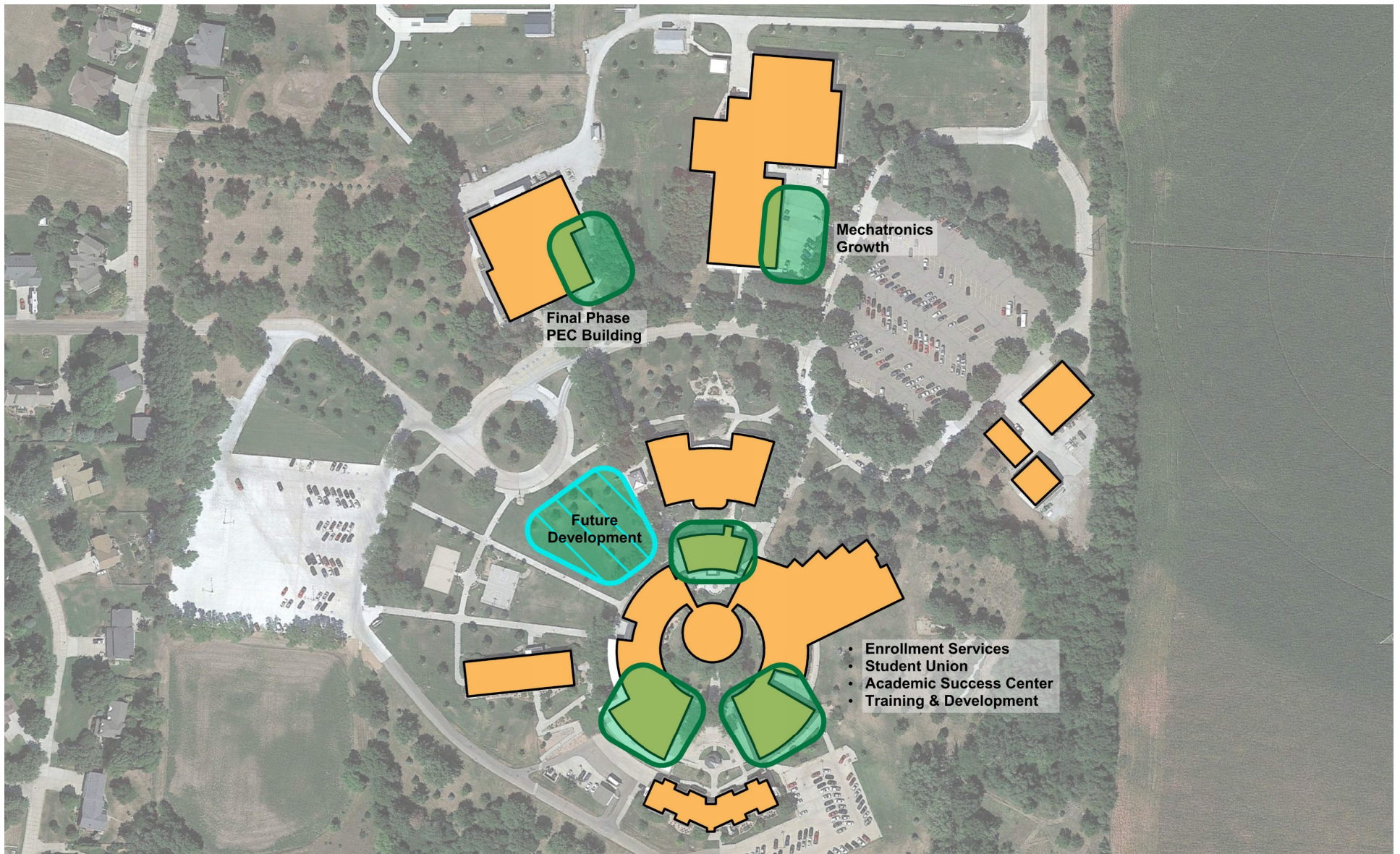


# GRAND ISLAND CAMPUS





# COLUMBUS CAMPUS





# HASTINGS CAMPUS

