

North Star Negotiations

Ravenna Public Schools, 10-0069

2018-2019

Midpoint Analysis

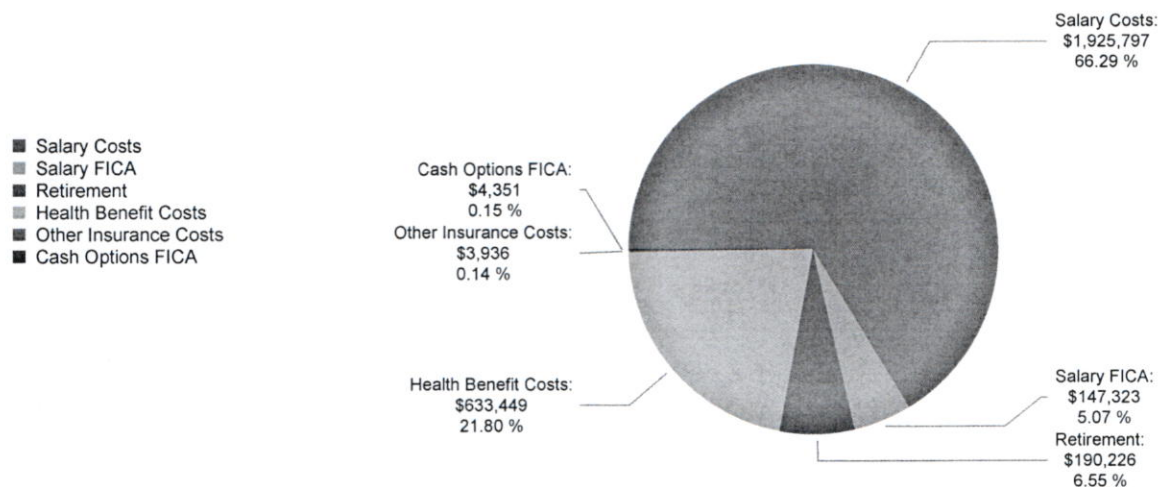
10/12/2017

2017-2018 Ravenna Public Schools Comparison Results:

	Contract Days	Staff Index	Base Salary	Benefit Costs	Schedule Costs	Total Costs		Percentile
Current Costs	185	58.5993	33,850	641,736	2,331,264	2,973,000	View Current Costs Projections	100.29%
Comparable Benchmark	185	58.5993	32,864	641,736	2,263,347	2,905,083	View Comparable Projections	98%
Difference			-986	+0	-67,917	-67,917		-2.29%
Compensation Range	Base Salary		98%	32,864	100%	33,725	102%	34,586
	Total Costs		98%	2,905,083	100%	2,964,370	102%	3,023,658

The Benchmark data contains adjustments, made via its Schedule Costs link (which is the Staff Summary page).

Calculated Comparable Benchmark for
Ravenna Public Schools



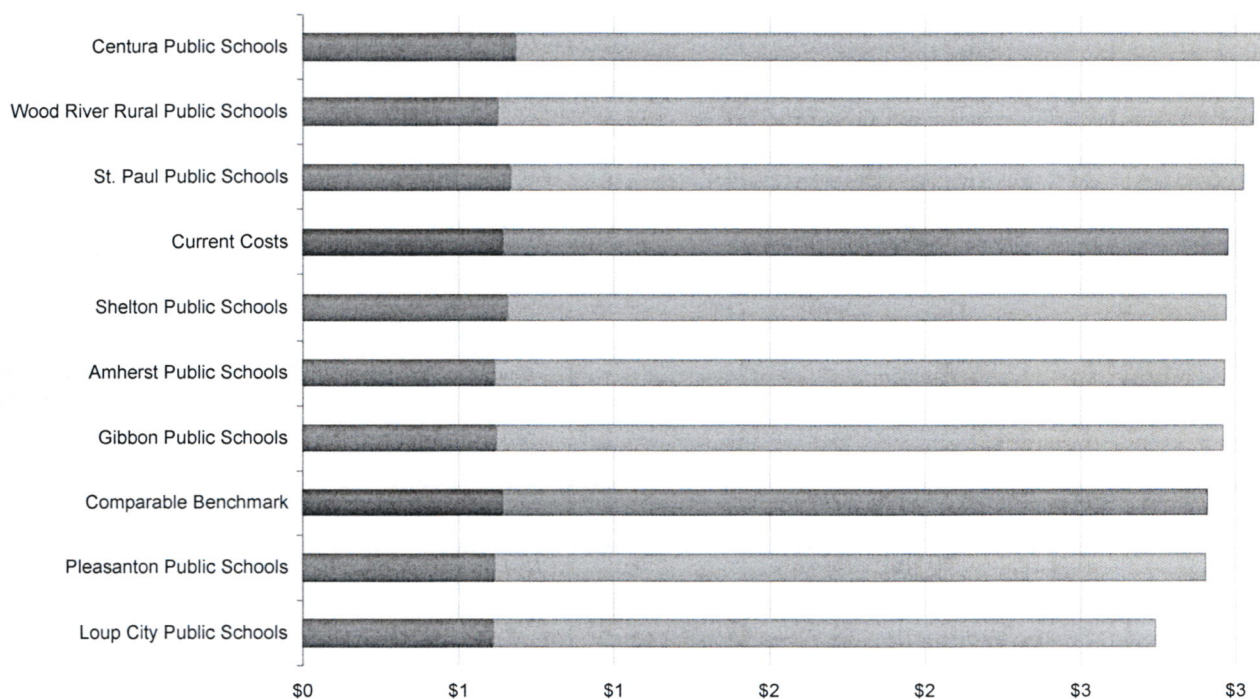
2017-2018 Ravenna Public Schools Changed Data Rows:

Contract Days	Staff Index	Base Salary	Benefit Costs	Schedule Costs	Total Costs	Percentile
---------------	-------------	-------------	---------------	----------------	-------------	------------

No Changed Data Rows have been added.

Array School Comparison Information:										
School	Contract Days	Staff Index	Base Salary	Benefit Costs	Schedule Costs	Total Costs	Adj Benefit Costs	Adj Schedule Costs	Adj Total Costs	Percentile
Centura Public Schools	185	58.6535	35,000	681,813	2,412,698	3,094,510	681,813	2,412,698	3,094,510	104.39%
Wood River Rural Public Schools	185	59.0300	35,000	628,713	2,427,010	3,055,723	628,713	2,427,010	3,055,723	103.08%
St. Paul Public Schools	185	58.1613	34,550	664,945	2,359,442	3,024,387	664,945	2,359,442	3,024,387	102.02%
Shelton Public Schools	185	59.9513	32,750	658,520	2,317,221	2,975,741	658,520	2,308,359	2,966,879	100.08%
Amherst Public Schools	182	57.5179	34,200	615,202	2,322,008	2,937,211	615,319	2,349,793	2,965,112	100.03%
Gibbon Public Schools	185	57.7100	34,400	623,565	2,332,046	2,955,611	623,565	2,332,046	2,955,611	99.70%
Pleasanton Public Schools	182	57.1600	33,475	618,173	2,247,669	2,865,842	618,173	2,284,719	2,902,892	97.93%
Loup City Public Schools	185	54.0257	33,550	611,268	2,125,575	2,736,843	611,268	2,125,575	2,736,843	92.32%

Subject and Array School Comparison
(scale is millions of dollars)



Descriptive Statistics:										
8 Records	Contract Days	Staff Index	Base Salary	Benefit Costs	Schedule Costs	Total Costs	Adj Benefit Costs	Adj Schedule Costs	Adj Total Costs	Percentile
Array Average	184.25	57.7762	34,116	637,775	2,317,959	2,955,734	637,789	2,324,955	2,962,745	99.95%
Array High	185	59.9513	35,000	681,813	2,438,425	3,094,510	681,813	2,428,121	3,094,510	104.39%
Array Low	182	54.0257	32,750	611,268	2,125,575	2,736,843	611,268	2,125,575	2,736,843	92.32%
Adj Total Costs			Mean	2,962,745	Median	2,965,996	Midpoint	2,964,370		

Information from the Contract Settlement Form, both For you And your School peer array, is used To come up With the information in this Negotiation Module. If you feel your information Is Not accurate please go to the Contract Settlement Form And correct it. If you feel a peer's information is inaccurate, please contact Sparq Data Solutions.

Sparq Data Solutions Inc. | 1311 Stockwell Street | Lincoln, NE 68502 | (402) 817-0120 | (800) 422-4572
 Copyright © 2013-2017. Sparq Data Solutions Inc. - All Rights Reserved.
 Data used throughout the program comes from the Contract Settlement Form.
 Have a question? Ask Sparq Data Solutions. Or view the User Manual.

North Star Negotiations

Ravenna Public Schools, 10-0069

2018-2019

Midpoint Analysis

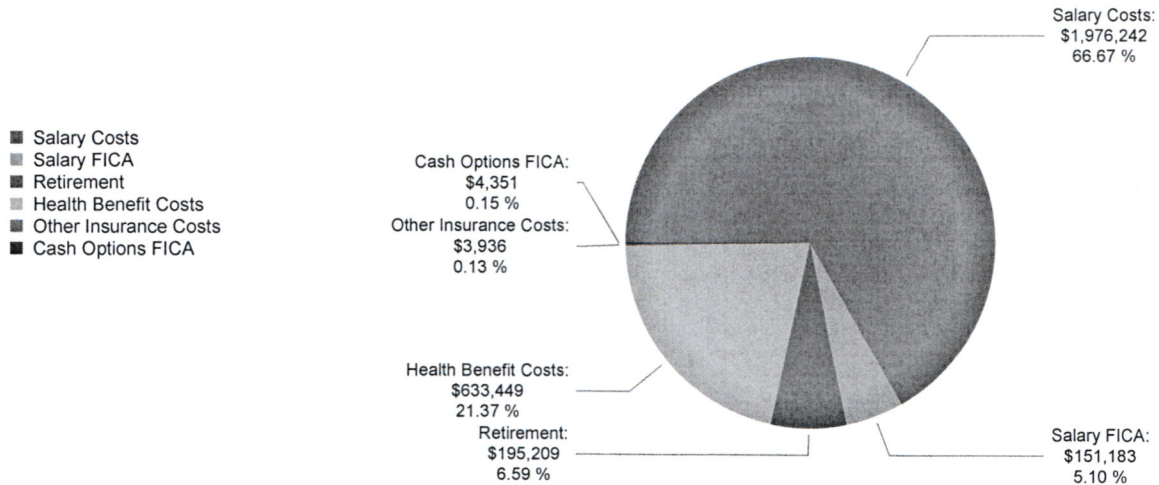
10/12/2017

2017-2018 Ravenna Public Schools Comparison Results:

	Contract Days	Staff Index	Base Salary	Benefit Costs	Schedule Costs	Total Costs		Percentile
Current Costs	185	58.5993	33,850	641,736	2,331,264	2,973,000	View Current Costs Projections	100.29%
Comparable Benchmark	185	58.5993	33,725	641,736	2,322,634	2,964,370	View Comparable Projections	100% <input type="text" value="100%"/>
Difference			-125	+0	-8,629	-8,629		-0.29%
Compensation Range	Base Salary		98%	32,864	100%	33,725	102%	34,586
	Total Costs		98%	2,905,083	100%	2,964,370	102%	3,023,658

The Benchmark data contains adjustments, made via its Schedule Costs link (which is the Staff Summary page).

Calculated Comparable Benchmark for
Ravenna Public Schools

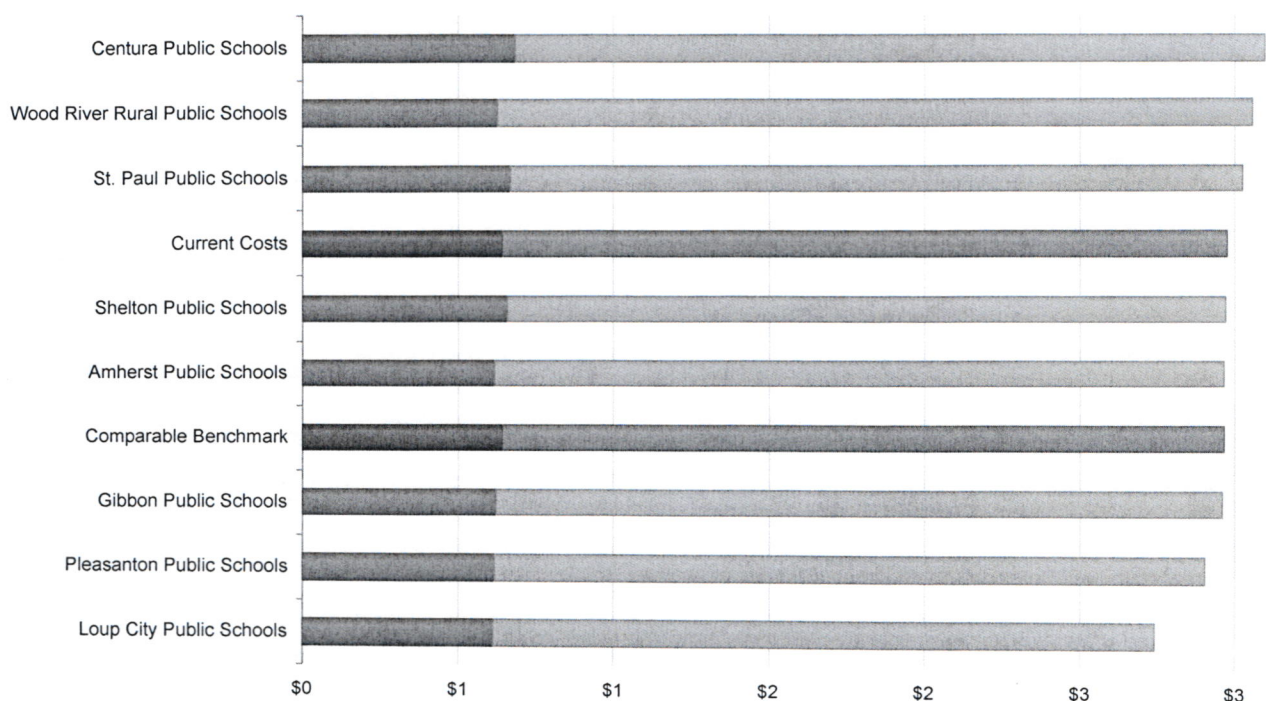


2017-2018 Ravenna Public Schools Changed Data Rows:

Contract Days	Staff Index	Base Salary	Benefit Costs	Schedule Costs	Total Costs	Percentile
No Changed Data Rows have been added.						

Array School Comparison Information:										
School	Contract Days	Staff Index	Base Salary	Benefit Costs	Schedule Costs	Total Costs	Adj Benefit Costs	Adj Schedule Costs	Adj Total Costs	Percentile
Centura Public Schools	185	58.6535	35,000	681,813	2,412,698	3,094,510	681,813	2,412,698	3,094,510	104.39%
Wood River Rural Public Schools	185	59.0300	35,000	628,713	2,427,010	3,055,723	628,713	2,427,010	3,055,723	103.08%
St. Paul Public Schools	185	58.1613	34,550	664,945	2,359,442	3,024,387	664,945	2,359,442	3,024,387	102.02%
Shelton Public Schools	185	59.9513	32,750	658,520	2,317,221	2,975,741	658,520	2,308,359	2,966,879	100.08%
Amherst Public Schools	182	57.5179	34,200	615,202	2,322,008	2,937,211	615,319	2,349,793	2,965,112	100.03%
Gibbon Public Schools	185	57.7100	34,400	623,565	2,332,046	2,955,611	623,565	2,332,046	2,955,611	99.70%
Pleasanton Public Schools	182	57.1600	33,475	618,173	2,247,669	2,865,842	618,173	2,284,719	2,902,892	97.93%
Loup City Public Schools	185	54.0257	33,550	611,268	2,125,575	2,736,843	611,268	2,125,575	2,736,843	92.32%

Subject and Array School Comparison
(scale is millions of dollars)



Descriptive Statistics:										
8 Records	Contract Days	Staff Index	Base Salary	Benefit Costs	Schedule Costs	Total Costs	Adj Benefit Costs	Adj Schedule Costs	Adj Total Costs	Percentile
Array Average	184.25	57.7762	34,116	637,775	2,317,959	2,955,734	637,789	2,324,955	2,962,745	99.95%
Array High	185	59.9513	35,000	681,813	2,438,425	3,094,510	681,813	2,428,121	3,094,510	104.39%
Array Low	182	54.0257	32,750	611,268	2,125,575	2,736,843	611,268	2,125,575	2,736,843	92.32%
Adj Total Costs			Mean	2,962,745	Median	2,965,996	Midpoint	2,964,370		

Information from the Contract Settlement Form, both For you And your School peer array, is used To come up With the information in this Negotiation Module. If you feel your information Is Not accurate please go to the Contract Settlement Form And correct it. If you feel a peer's information is inaccurate, please contact Sparq Data Solutions.

Sparq Data Solutions Inc. | 1311 Stockwell Street | Lincoln, NE 68502 | (402) 817-0120 | (800) 422-4572
 Copyright © 2013-2017. Sparq Data Solutions Inc. - All Rights Reserved.
 Data used throughout the program comes from the Contract Settlement Form.
 Have a question? Ask Sparq Data Solutions. Or view the User Manual.

North Star Negotiations

Ravenna Public Schools, 10-0069

2018-2019

Midpoint Analysis

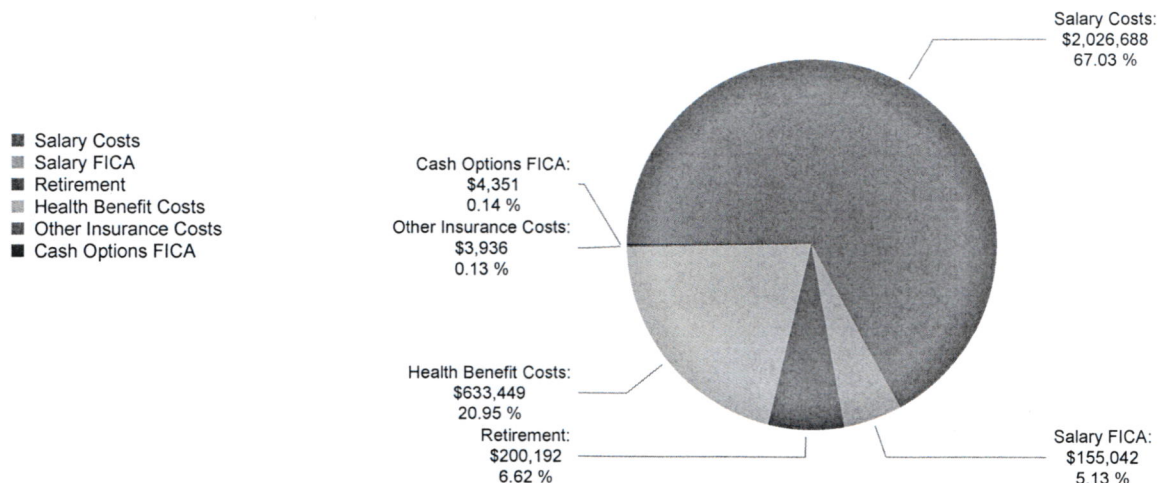
10/12/2017

2017-2018 Ravenna Public Schools Comparison Results:

	Contract Days	Staff Index	Base Salary	Benefit Costs	Schedule Costs	Total Costs		Percentile
Current Costs	185	58.5993	33,850	641,736	2,331,264	2,973,000	View Current Costs Projections	100.29%
Comparable Benchmark	185	58.5993	34,586	641,736	2,381,922	3,023,658	View Comparable Projections	102%
Difference			+736	+0	+50,658	+50,658		+1.71%
Compensation Range	Base Salary		98%	32,864	100%	33,725	102%	34,586
	Total Costs		98%	2,905,083	100%	2,964,370	102%	3,023,658

The Benchmark data contains adjustments, made via its Schedule Costs link (which is the Staff Summary page).

Calculated Comparable Benchmark for
Ravenna Public Schools



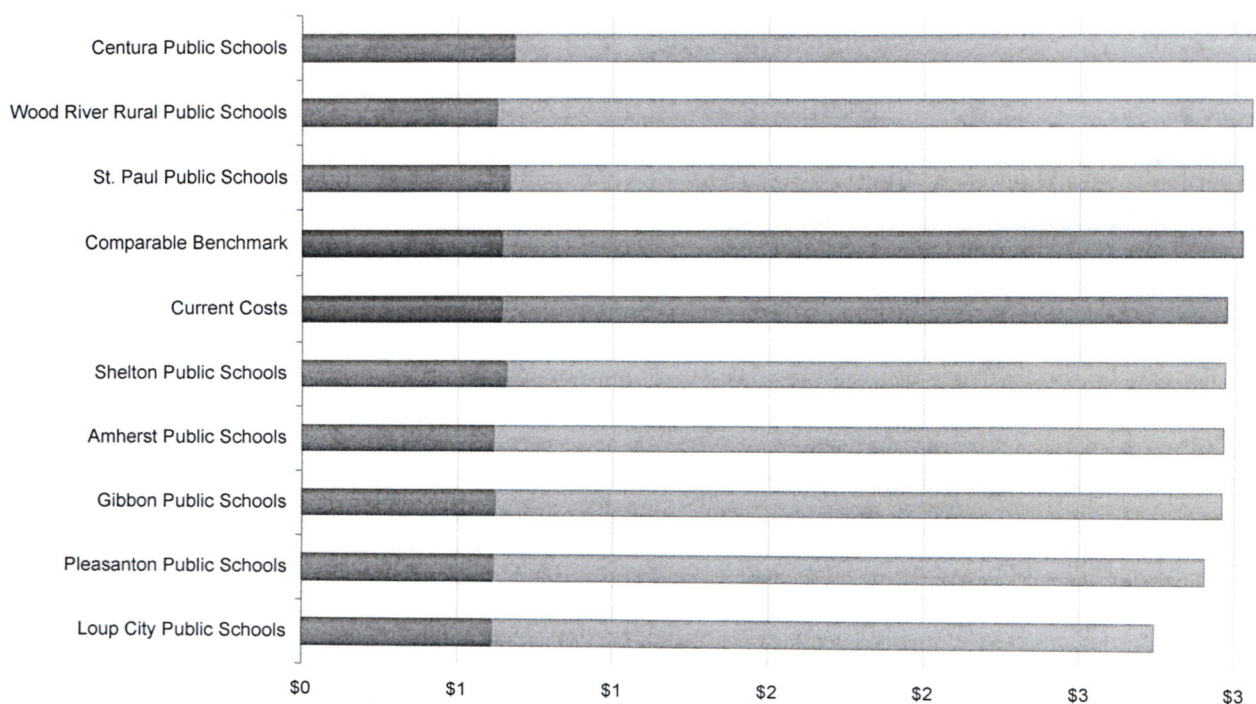
2017-2018 Ravenna Public Schools Changed Data Rows:

Contract Days	Staff Index	Base Salary	Benefit Costs	Schedule Costs	Total Costs	Percentile
---------------	-------------	-------------	---------------	----------------	-------------	------------

No Changed Data Rows have been added.

Array School Comparison Information:										
School	Contract Days	Staff Index	Base Salary	Benefit Costs	Schedule Costs	Total Costs	Adj Benefit Costs	Adj Schedule Costs	Adj Total Costs	Percentile
Centura Public Schools	185	58.6535	35,000	681,813	2,412,698	3,094,510	681,813	2,412,698	3,094,510	104.39%
Wood River Rural Public Schools	185	59.0300	35,000	628,713	2,427,010	3,055,723	628,713	2,427,010	3,055,723	103.08%
St. Paul Public Schools	185	58.1613	34,550	664,945	2,359,442	3,024,387	664,945	2,359,442	3,024,387	102.02%
Shelton Public Schools	185	59.9513	32,750	658,520	2,317,221	2,975,741	658,520	2,308,359	\$2,973,000	100.29%
Amherst Public Schools	182	57.5179	34,200	615,202	2,322,008	2,937,211	615,319	2,349,793	2,965,112	100.03%
Gibbon Public Schools	185	57.7100	34,400	623,565	2,332,046	2,955,611	623,565	2,332,046	2,955,611	99.70%
Pleasanton Public Schools	182	57.1600	33,475	618,173	2,247,669	2,865,842	618,173	2,284,719	2,902,892	97.93%
Loup City Public Schools	185	54.0257	33,550	611,268	2,125,575	2,736,843	611,268	2,125,575	2,736,843	92.32%

Subject and Array School Comparison
(scale is millions of dollars)



Descriptive Statistics:										
8 Records	Contract Days	Staff Index	Base Salary	Benefit Costs	Schedule Costs	Total Costs	Adj Benefit Costs	Adj Schedule Costs	Adj Total Costs	Percentile
Array Average	184.25	57.7762	34,116	637,775	2,317,959	2,955,734	637,789	2,324,955	2,962,745	99.95%
Array High	185	59.9513	35,000	681,813	2,438,425	3,094,510	681,813	2,428,121	3,094,510	104.39%
Array Low	182	54.0257	32,750	611,268	2,125,575	2,736,843	611,268	2,125,575	2,736,843	92.32%
Adj Total Costs			Mean	2,962,745	Median	2,965,996	Midpoint	2,964,370		

Information from the Contract Settlement Form, both For you And your School peer array, is used To come up With the information in this Negotiation Module. If you feel your information Is Not accurate please go to the Contract Settlement Form And correct it. If you feel a peer's information is inaccurate, please contact Sparq Data Solutions.

Sparq Data Solutions Inc. | 1311 Stockwell Street | Lincoln, NE 68502 | (402) 817-0120 | (800) 422-4572
 Copyright © 2013-2017. Sparq Data Solutions Inc. - All Rights Reserved.
 Data used throughout the program comes from the Contract Settlement Form.
 Have a question? Ask Sparq Data Solutions. Or view the User Manual.