



IMPROVING QUALITY OF LIFE; FULFILLING ONE DREAM AT A TIME.

A solid dark red horizontal bar spanning the width of the page.

CCC Board of Governors

OCTOBER 28, 2021 MEETING
COLUMBUS CAMPUS

CCC Foundation/Wilson Foundation Balance Sheet

**C
o
n
s
o
l
i
d
a
t
e
d**

Current Assets		June 30, 2021	June 30, 2020
Cash and Equivalents		\$8,588,153	\$6,699,693
Investments		\$17,446,207	\$13,146,989
Wilson Foundation Farmland		\$12,928,497	\$13,287,872
Pledges Receivable		\$1,125,922	\$1,581,939
Allowance for Doubtful Pledges		-\$11,259	-\$15,819
Interest Receivable		\$1,498	\$1,071
Investment in Foundation Place Condo Assoc.		\$244	\$4,021
Total Current Assets		\$40,079,262	\$34,705,766
Non-Current Assets			
Loan Program Receivables		\$80,486	\$57,492
Charitable Remainder Unitrusts		\$183,208	\$158,337
Pledges Receivable		\$3,002,306	\$3,430,383
Allowance for Doubtful Pledges		-\$30,023	-\$29,898
Cash Value - Life Insurance		\$455,469	\$42,250
Total Non-Current Assets		\$3,691,446	\$3,658,564
Capital Assets			
Land		\$53,031	\$53,031
Buildings		\$650,939	\$650,939
Equipment		\$628,894	\$628,894
Accumulated Depreciation		-\$360,020	-\$262,643
Capital Assets, Net of Accumulated Depreciation		\$972,844	\$1,070,221
TOTAL ASSETS		\$44,743,552	\$39,434,551



C
o
n
s
o
l
i
d
a
t
e
d

	June 30, 2021	June 30, 2020
Current Liabilities		
Accounts Payable	\$0	\$1,759
CCC Payable	\$38,893	\$15,870
Deferred Income	\$1,463	\$0
Accrued Interest Payable	\$124	\$0
Notes Payable	\$576,011	\$0
Total Current Liabilities	\$616,491	\$17,629
Long-Term Liabilities		
Gift Annuities Payable	\$347,224	\$359,437
TOTAL LIABILITIES	\$963,715	\$377,066
Net Assets		
Net Assets Without Donor Restrictions	\$19,685,981	\$19,014,140
Net Assets With Donor Restrictions	\$24,093,856	\$20,043,345
Total Net Assets	\$43,779,837	\$39,057,485
TOTAL LIABILITIES & NET ASSETS	\$44,743,552	\$39,434,551

CCC Foundation/Wilson Foundation Consolidated Income Statement

Revenue	June 30, 2021	June 30, 2020
Gifts	\$2,658,856	\$4,007,620
Interest & Dividends	\$282,962	\$372,528
Fund Raising Proceeds	\$155,803	\$172,126
Support from CCC	\$371,916	\$545,427
Other Income	\$74,756	\$104,743
Farm Income	\$540,866	\$481,931
Gifts Returned	\$2,500	\$2,500
Net Gains (losses) and Change in Fair Value of Investments	\$3,590,584	-\$88,667
Total Revenue	\$7,678,243	\$5,598,208
Expenditures		
Scholarships - CCCF Funds & Indirect Funds	\$952,406	\$1,049,258
Transfers to CCC	\$620,166	\$1,176,398
Transfer - Other	\$50,000	\$86,187
Investment Advisor Fees	\$137,348	\$145,105
Operating Expenses	\$1,157,668	\$1,144,173
Fund Raising Expenses	\$26,028	\$87,557
CCC Program Support Expenses	\$8,375	\$15,681
Gifts Returned	\$3,900	\$5,793
Total Expenditures	\$2,955,891	\$3,710,152
Change in Net Assets	\$4,722,352	\$1,888,056
Net Assets at Beginning of Year	\$39,057,485	\$37,169,428
Net Assets at End of Year	\$43,779,837	\$39,057,484

Major Gift Campaign Updates

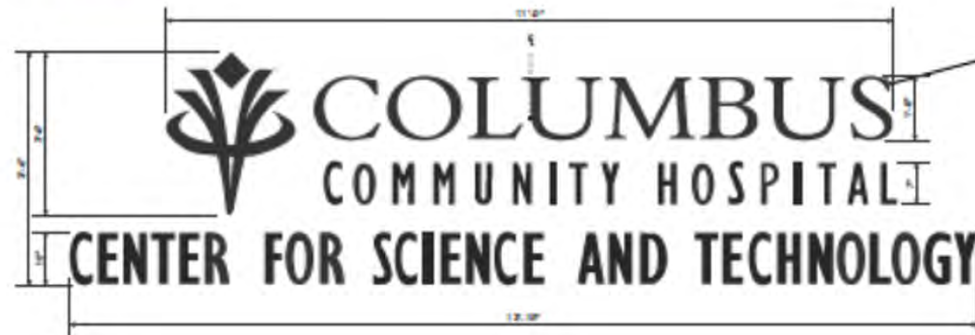
Campaign	Goal of Campaign	Total Raised	Collected as of 10/11/21	Receivables as of 10/11/21	Planned Gifts Receivable Owed to CCC
Hastings Major Gifts Campaign (AMDT Addition & WELD Renovation) plus AMDT/WELD Endowed Scholarship Fund	\$ 5,500,000	\$ 5,694,881	\$ 5,372,057	\$ 179,824	\$ 147,000
Columbus Major Gifts Campaign (Nursing & Science Center) plus Center for Science & Technology Endowed Scholarship Fund	\$ 4,000,000	\$ 4,105,298	\$ 1,811,794	\$ 1,968,504	\$ 325,000

Columbus Campus Major Gifts Campaign – Center for Science & Technology

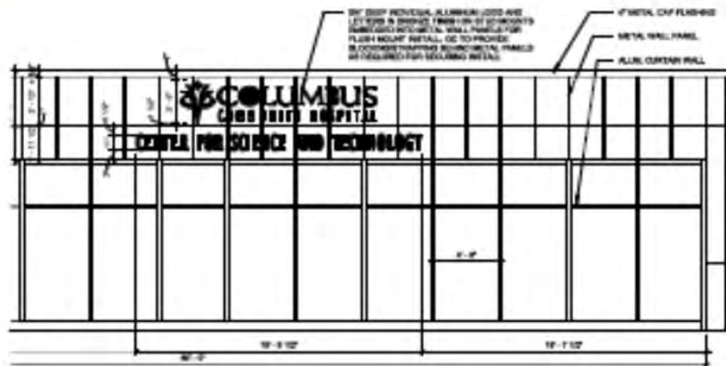
- Naming Opportunities

A2 INTERIOR SIGNAGE - CAST METAL LETTERS
SCALE: 1/2"=1'-0"

Front View



Side Elevation
See A1, A2

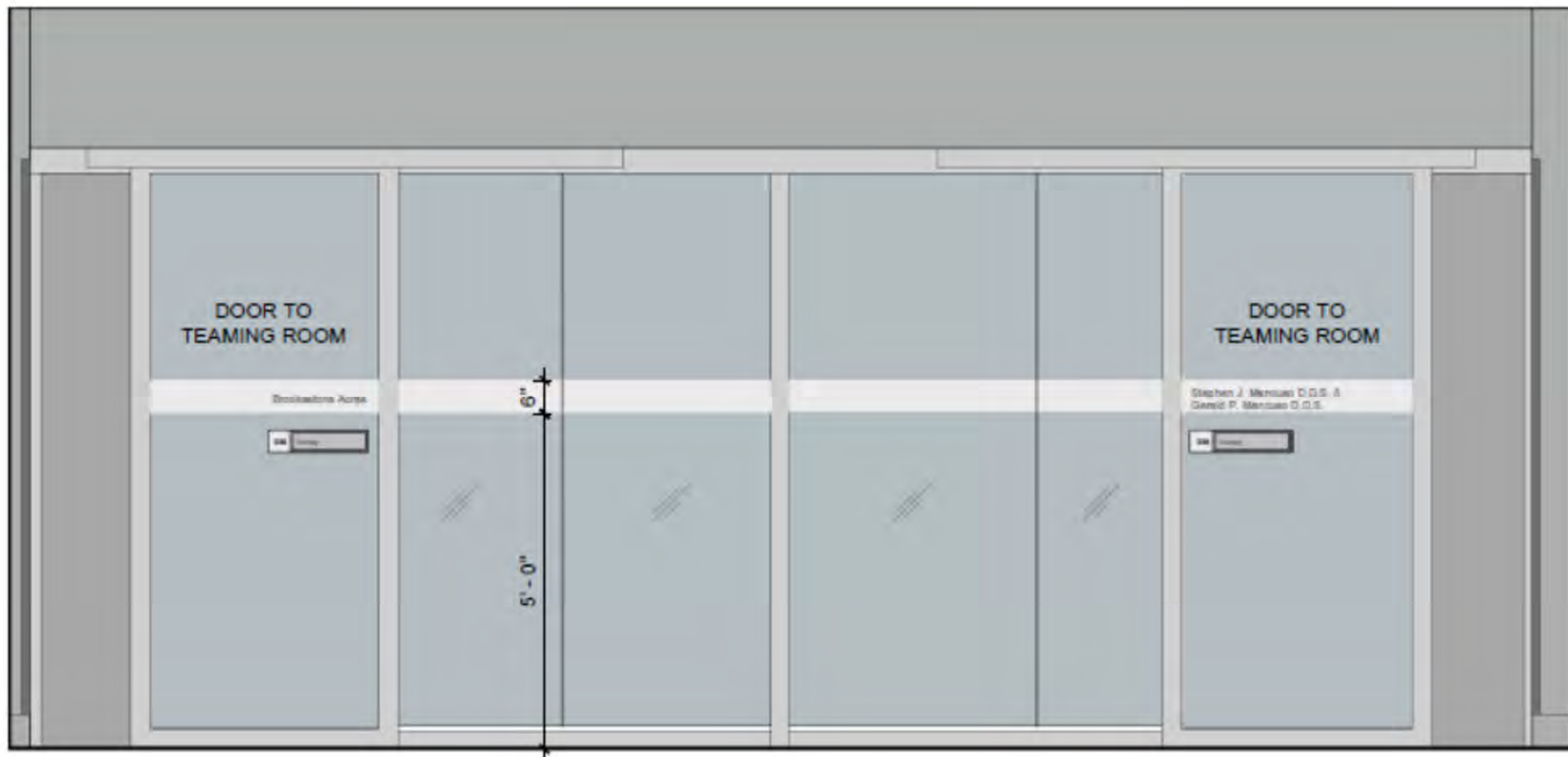




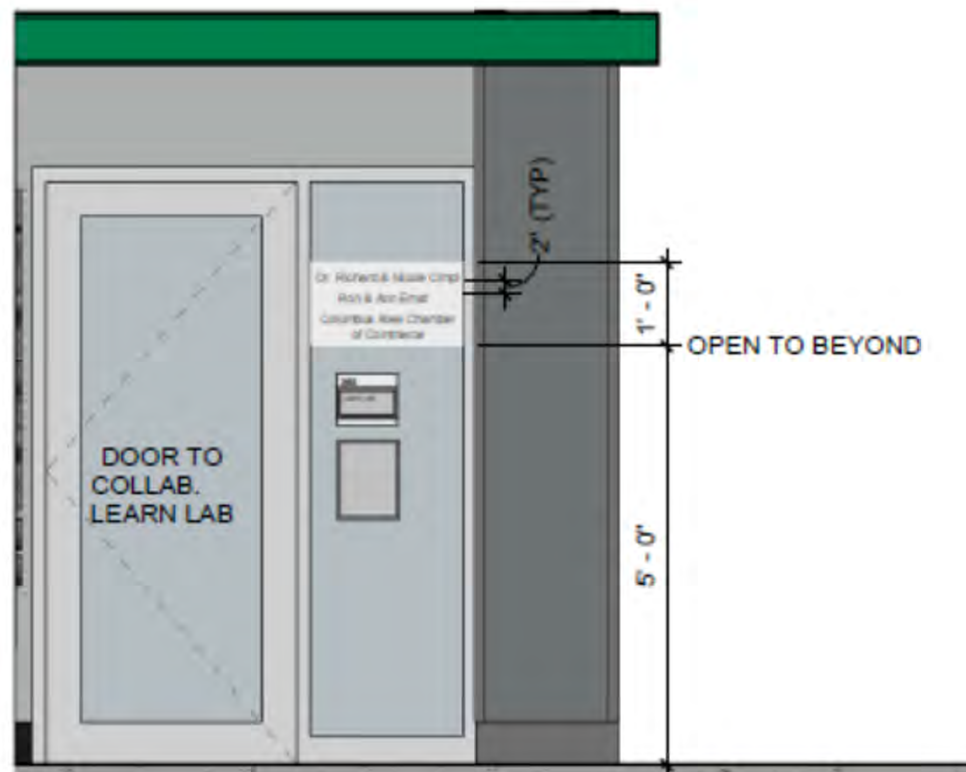




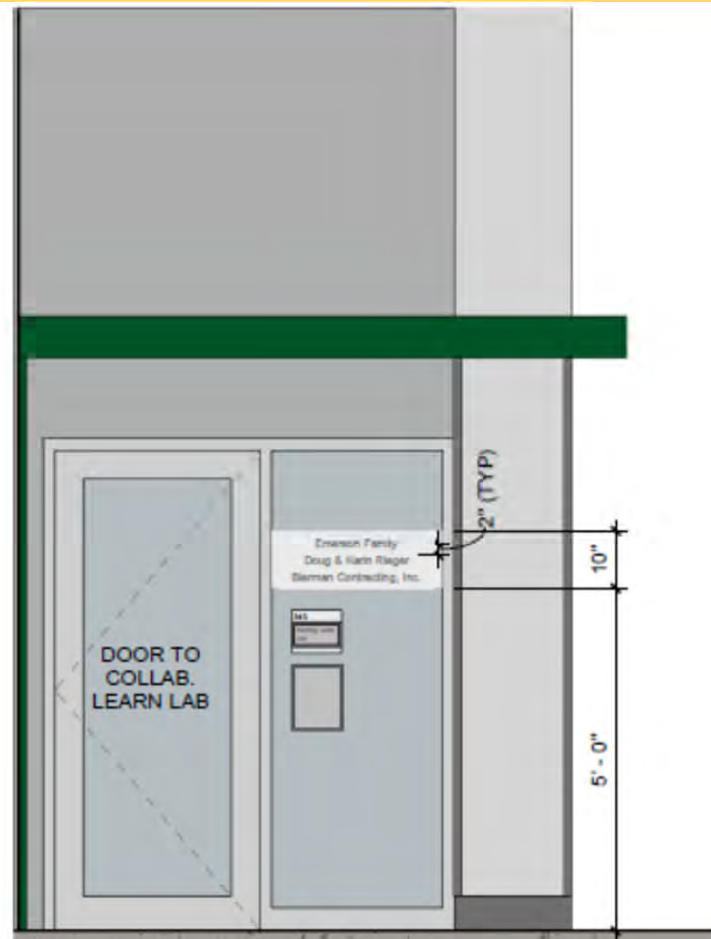
INTERIOR ELEVATION - NURSING LAB CLASSROOM



INTERIOR ELEVATION- TEAMING ROOMS- RM 338 & 339



INTERIOR ELEVATION- COLLAB. LEARN LAB ENTRY



INTERIOR ELEVATION- COLLABORATIVE LEARN LAB ENTRY

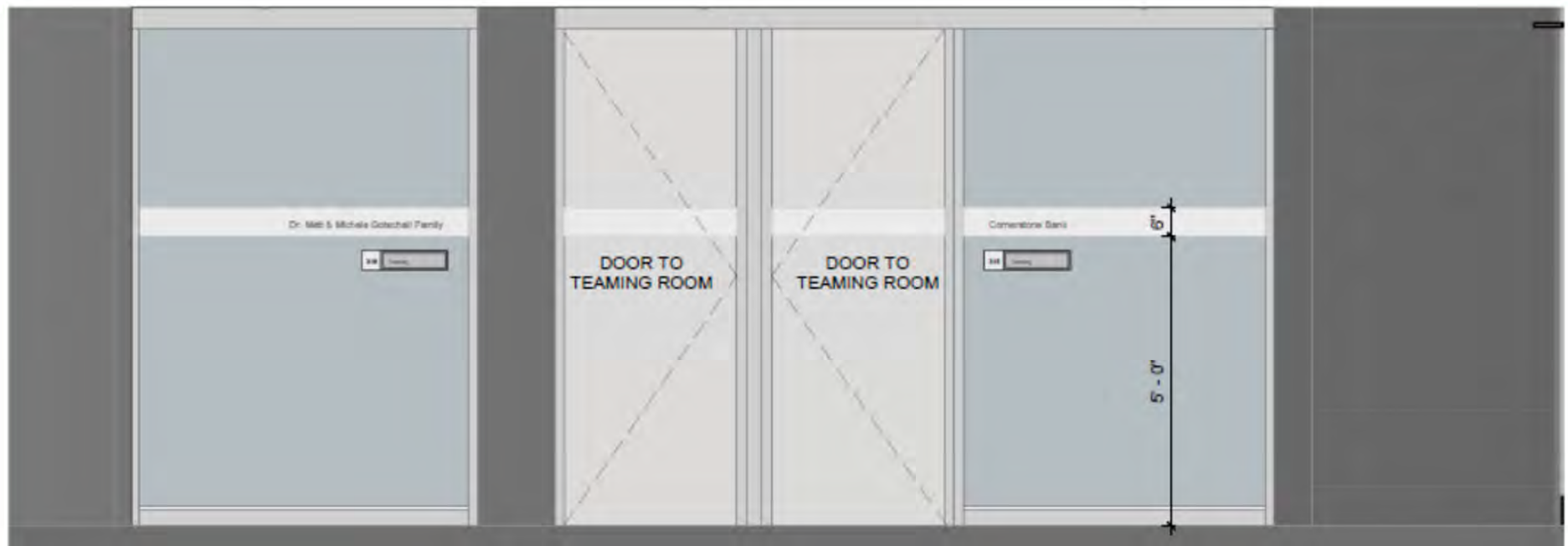


*ELEVATION OF CURVED WALL

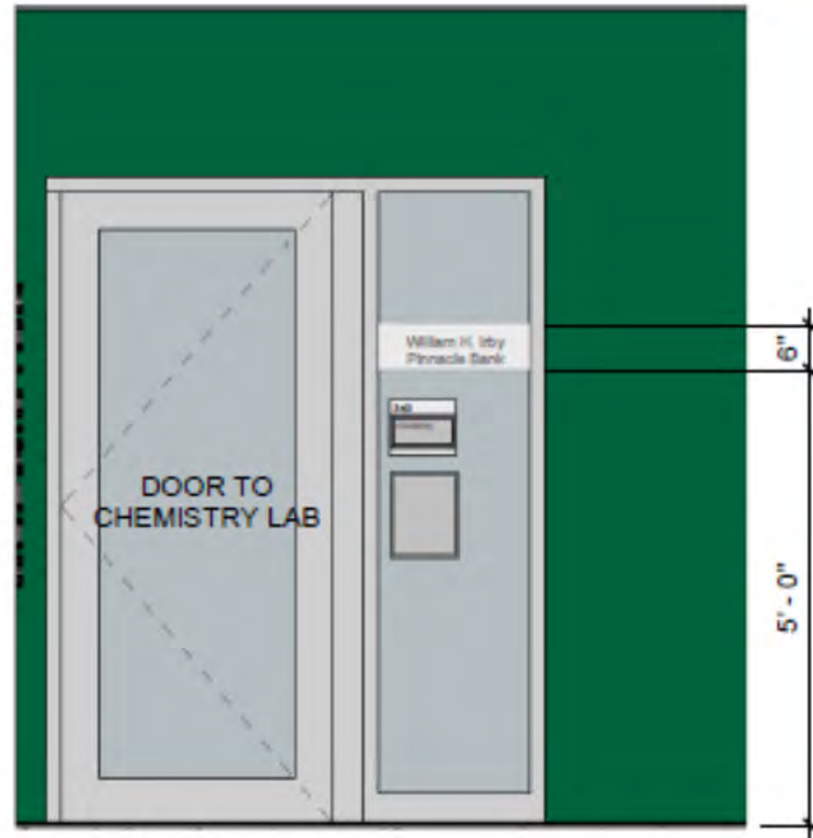
INTERIOR ELEVATION - EXTENDED REALITY LAB ENTRY



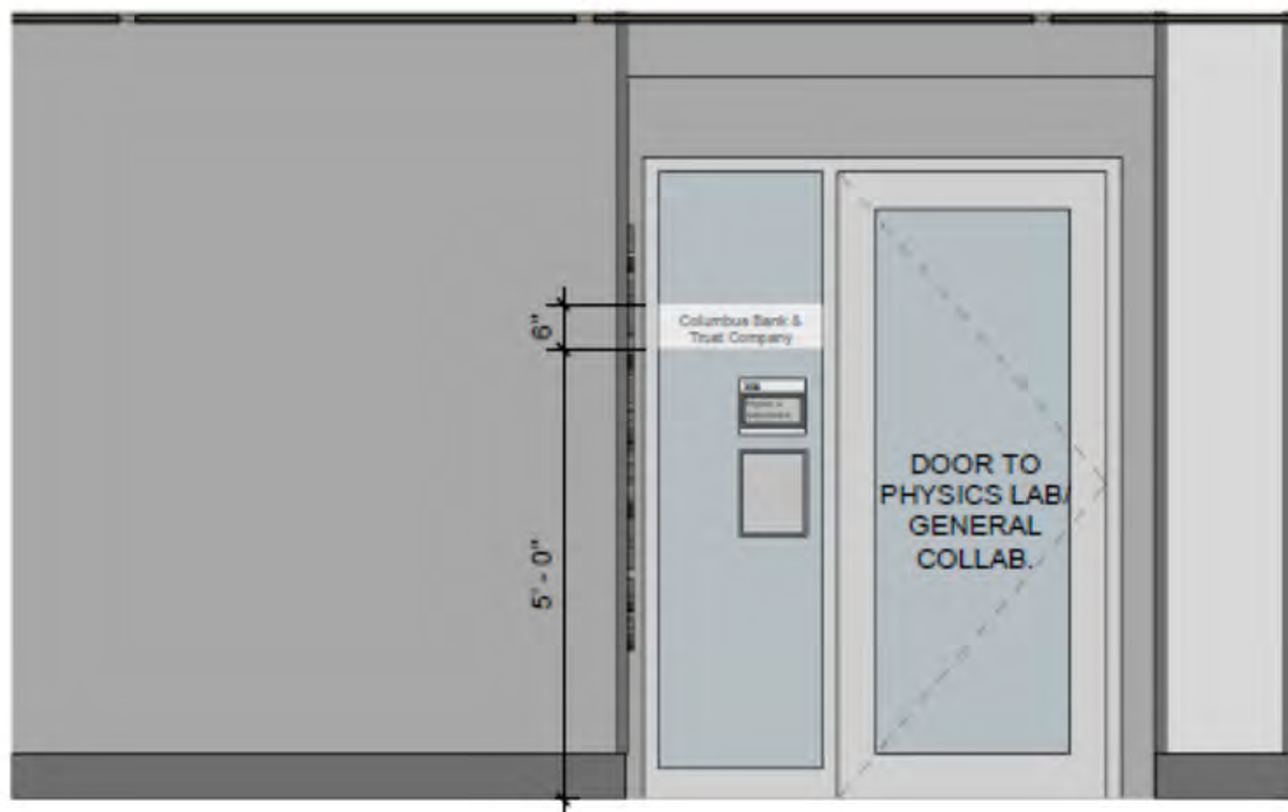
INTERIOR ELEVATION- NURSE ASST/MED AID CLASSROOM ENTRY



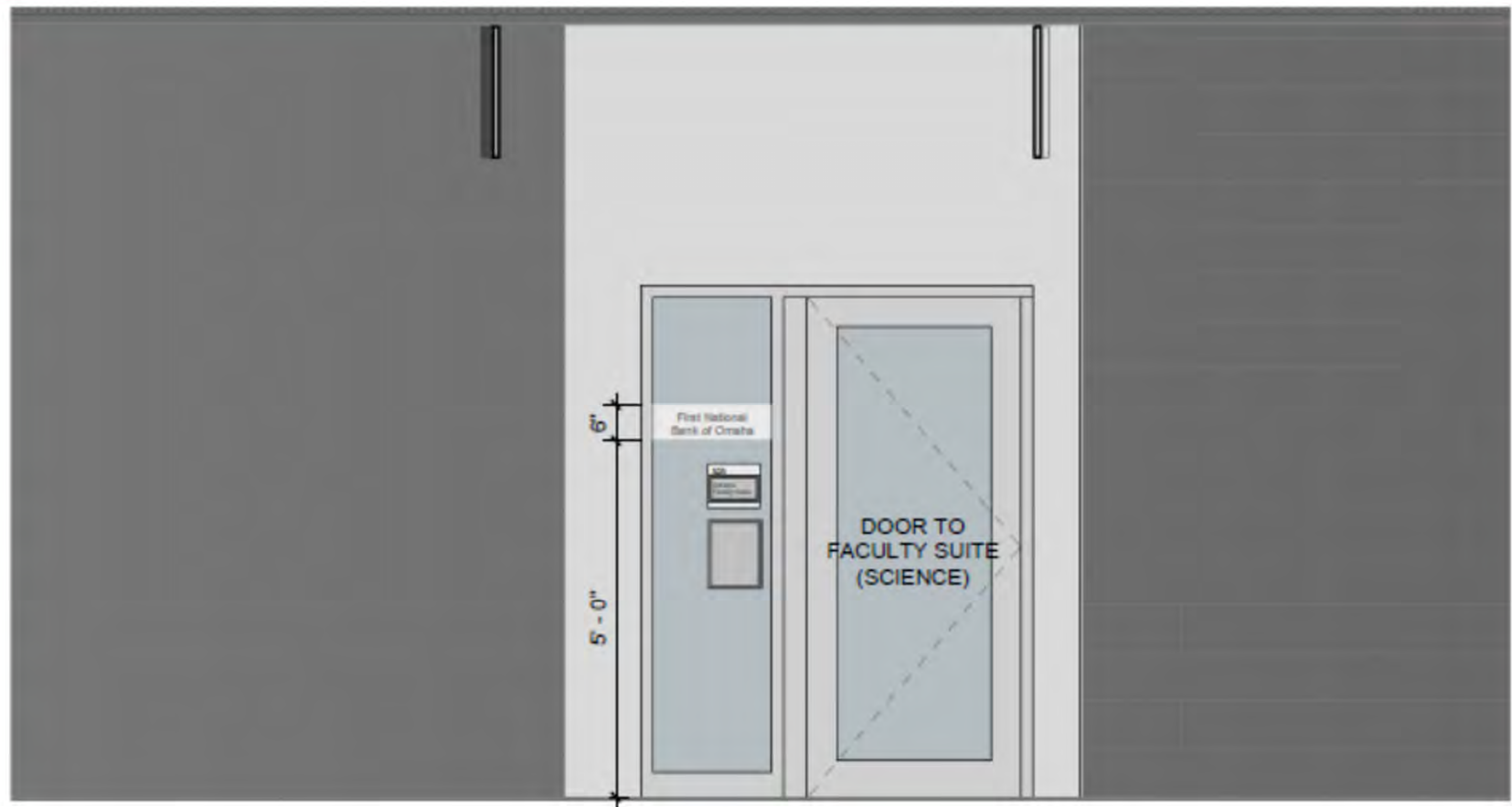
INTERIOR ELEVATION- TEAMING ROOMS- RM 315 & 316



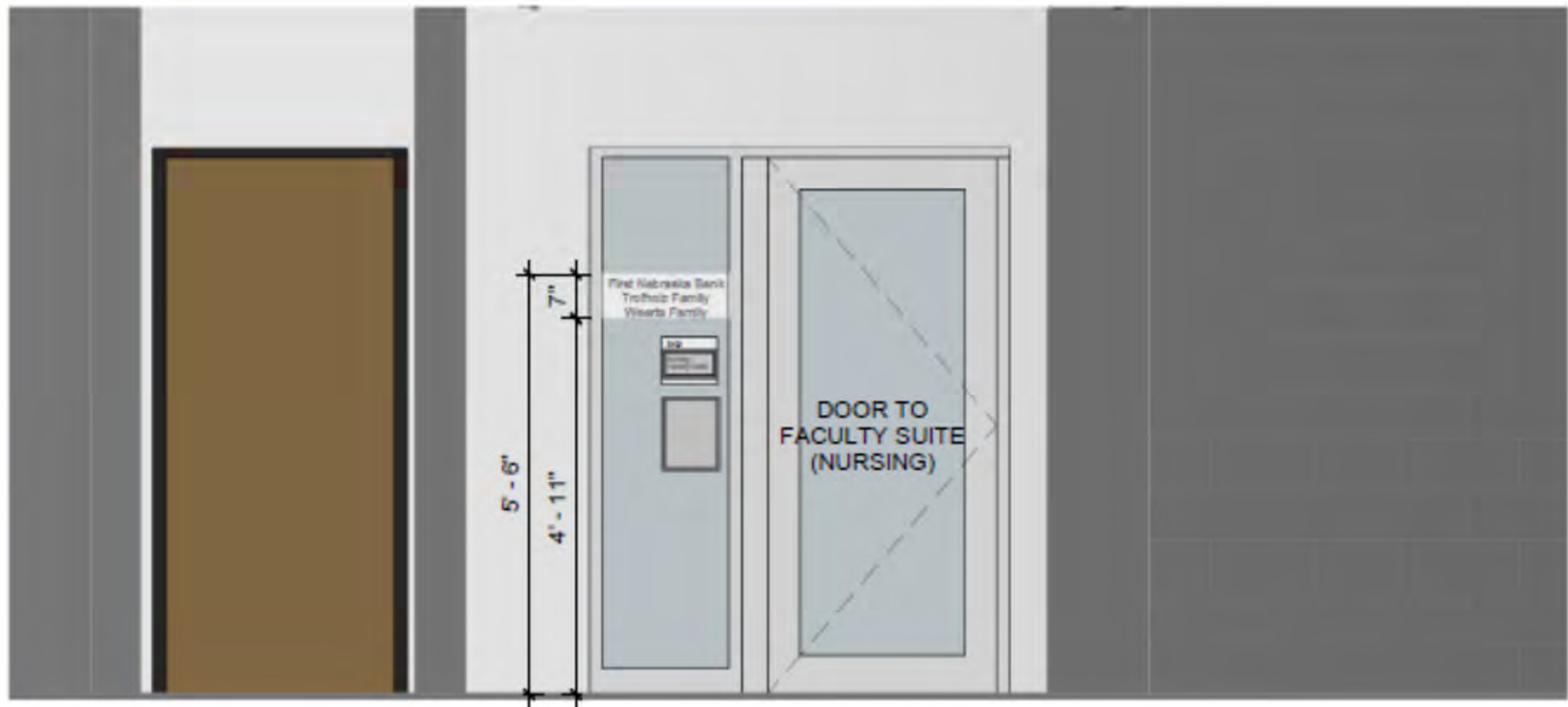
INTERIOR ELEVATION- CHEMISTRY ENTRY



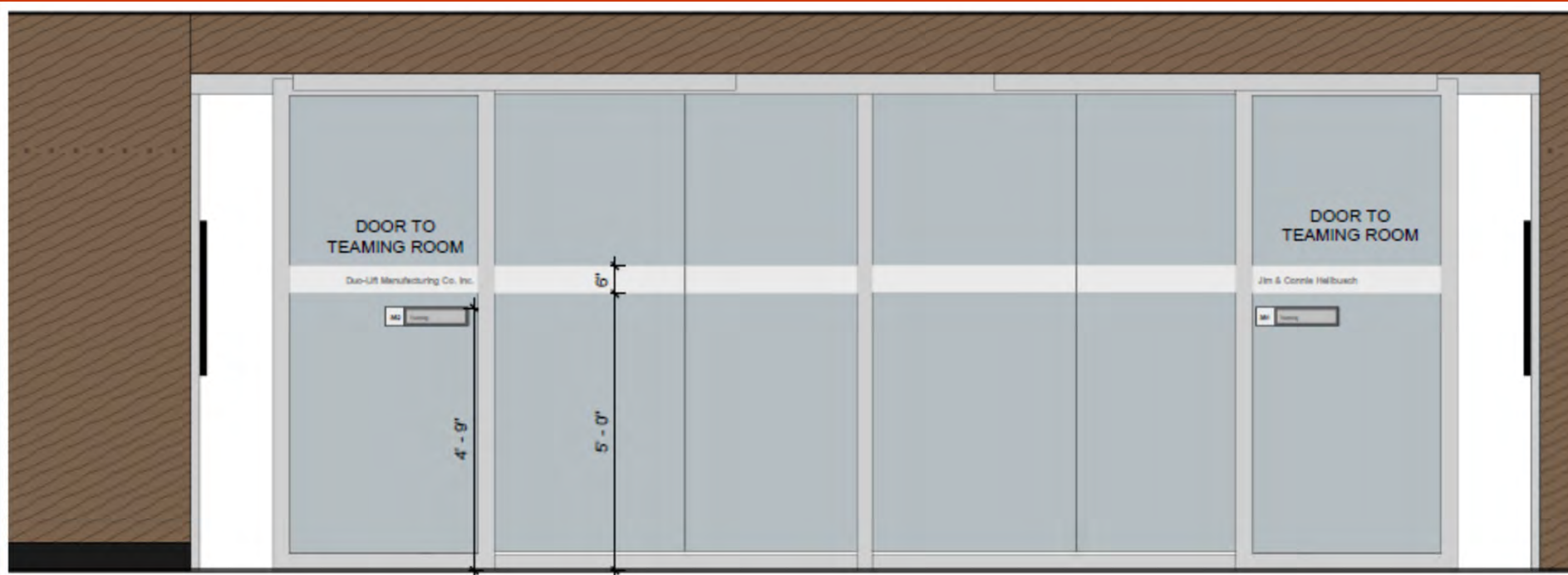
INTERIOR ELEVATION- PHYSICS LAB/GENERAL COLLAB. ENTRY



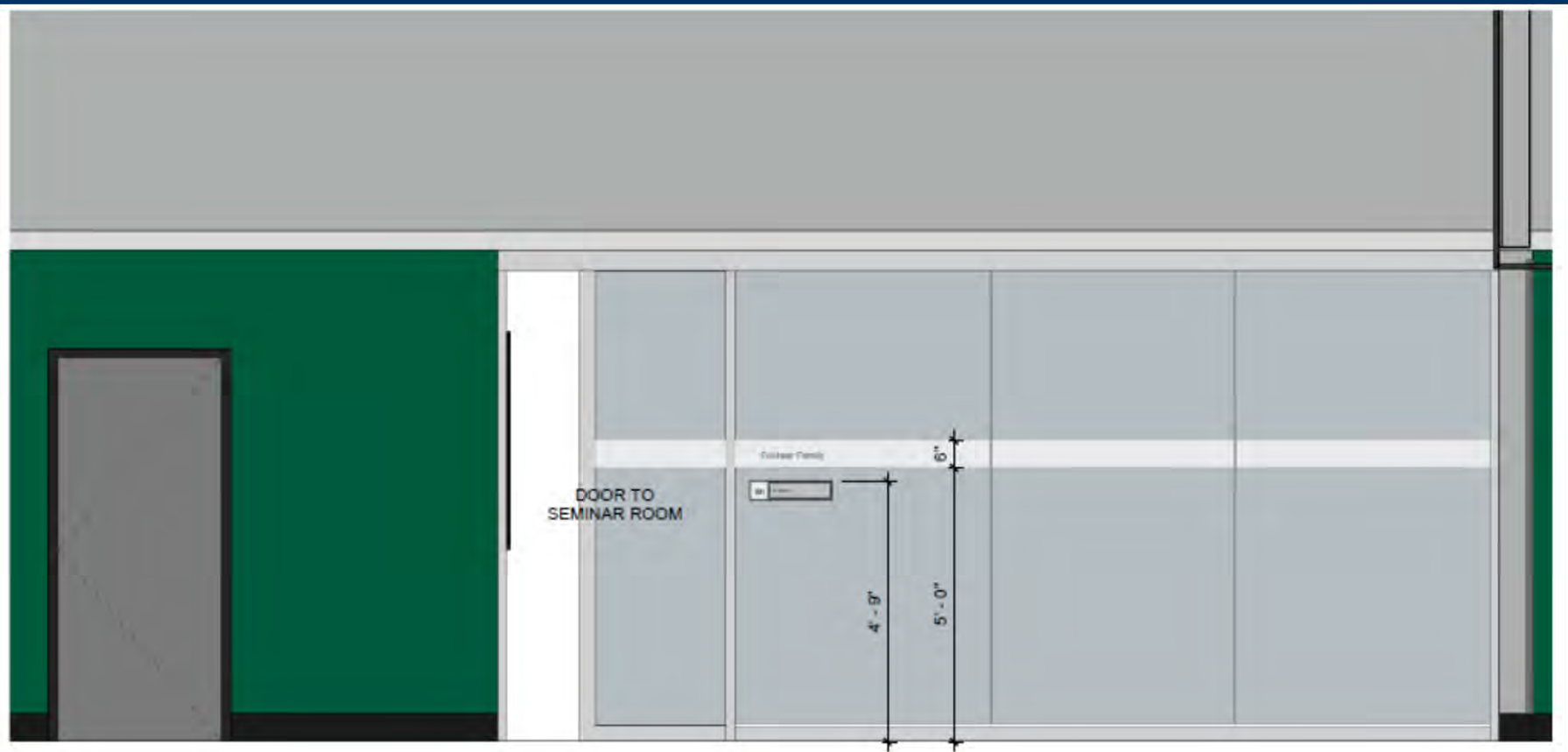
INTERIOR ELEVATION- FACULTY SUITE (SCIENCE) ENTRY



INTERIOR ELEVATION- FACULTY SUITE (NURSING) ENTRY



INTERIOR ELEVATION- TEAMING ROOMS-RM 351 & 352



INT. ELEV.- SEMINAR ROOM ENTRY



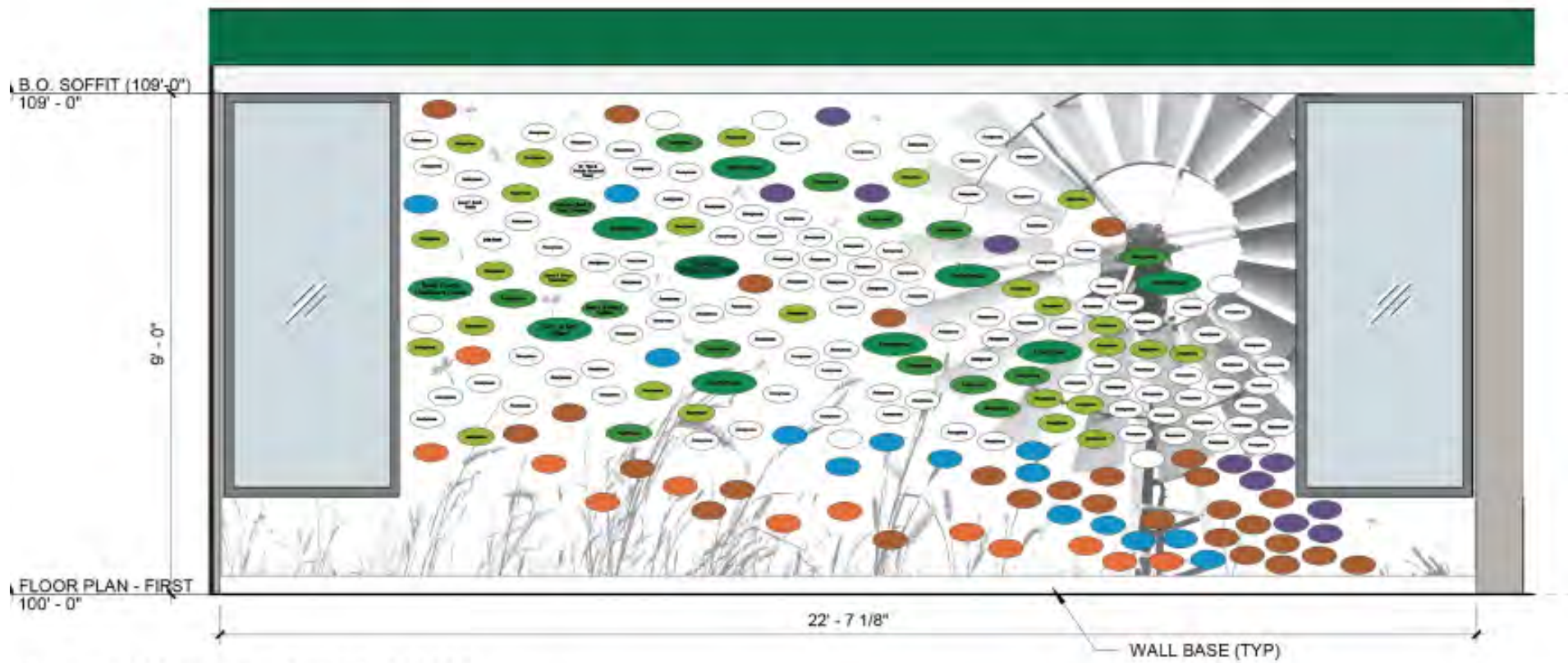
Room Donor Sign Example:

**Vinyl Film on Glass with
Opaque Text at 1 1/2" Tall**

Sizing Reference:

- CCC Standard Room Numbers are 1" Tall
- CCC Standard Room Names are 3/4" Tall





1
3K4 **ELEVATION - DONOR WALL**
SCALE: 3/8" = 1'-0"

GENERATIONS OF IMPACT CAMPAIGN

- Visits with Legacy Society and Board of Directors/Board of Governors members
- Estate Planning Seminars for public
- Case for Support with Attorneys, Estate Planners, Investment Managers

Generations of Impact

The Central Community College Foundation Campaign



GIPS/CHI Project



ACADEMIES OF
**GRAND ISLAND
SENIOR HIGH™**
MY CHOICE, OUR VOICE.

Academy of Medical Sciences at



CHI Health
St. Francis

 **Central**
COMMUNITY
COLLEGE
Foundation



Grand Island Public Schools Academy of Medical Sciences

Project Scope

The Grand Island Senior High Academy of Medical Sciences will re-locate to a 'school within a hospital' at a renovated 8th floor of CHI-Health St. Francis Hospital.



The project will address the following:

- Need for Healthcare and Emergency Services Workers in the Region
- Support growth and diversification of Grand Island's economy
- Expose and involve 450 students annually to the Healthcare field
- Give students hands on, environment and industry specific experiences to further their instruction in healthcare



Grand Island Public Schools Academy of Medical Sciences
Partnership

Grand Island Public Schools



Central Community College



CHI Health St. Francis



Community



 **Central**
COMMUNITY
COLLEGE
Foundation



Grand Island Public Schools Academy of Medical Sciences
Project Partner

Academy of Medical Sciences Pathways



Emergency Services
Health Care
Sports Medicine/Therapy
Biomedical Sciences



Academy of Medical Sciences at CHI St. Francis



CHI Health St. Francis Medical Center Foundation
Melissa Griffith, Foundation Director
(308) 306-5400 | mgriffith@stmo-gl.org

Grand Island Public Schools Foundation
Traci Skelberg, Executive Director
(308) 385-5525 | tskelberg@gips.org

Central Community College Foundation
Dean Moors, Executive Director
(402) 490-2153 | dmoors@ccneb.edu

 **Central**
COMMUNITY
COLLEGE
Foundation



Grand Island Public Schools Academy of Medical Sciences

Project Budget

Total Construction Cost: **\$7,149,886**

Base Bid:	\$4,375,244
Parking Lot at CHI-Health St. Francis:	\$ 650,000
Self-Performed Work:	\$ 170,000
Contingency/Change Orders:	\$ 437,524
Cost of Inflation @ 6%:	\$ 377,624
Architectural and MEP:	\$ 360,958
Equipment/Furnishings:	\$ 431,000
Construction Supervisor (in-kind):	\$ 30,000
Leased Space (in-kind):	<u>\$ 317,536</u>
Sub-Total:	\$7,149,886

Total Annual Operating and Instructional Cost: **\$1,377,254**



Project

Construction Funding Plan



Grand Island Public Schools

\$1,000,000 – Construction

\$ 161,000 – In-Kind



Central Community College

\$200,000 – Equipment/Furnishings



Other Sources and Community

\$1,750,000 – Federal EDA Cares Act Grant

\$1,020,000 – Community Fundraising

\$ 317,536 – In-Kind Lease CHI Health St. Francis

Total Secured: \$4,448,536



Funds Needed

\$2,701,350

Projected Sources – Corporations,
Individuals, and Foundation Grants

Occupational Therapy Assistant (OTA) Project - Inclusive Playground

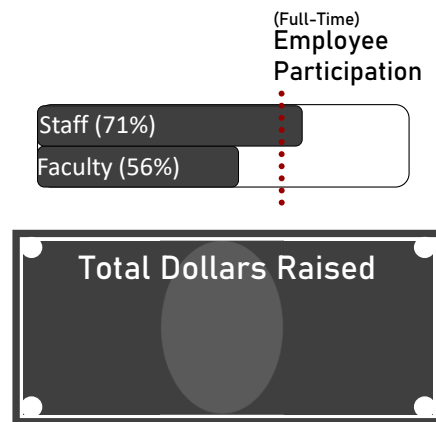
- Cooperative Relationship between City of Grand Island and Central Community College
 - Allows OTA students to interact with participants in the GI Parks & Recreation Programs
- Ryder Park – 202 N. Custer Ave. – Grand Island
- Mid-November – finalization of details
- City of Grand Island will be the contact holder
- CCC Foundation will be the fund-raising entity

CCC Foundation Pro-Am Golf Tournament

September 13th – Awarii Dunes, Axtell, NE

- **34 teams/136 individuals**
 - **5 golf professionals**
 - **Approximately \$29,000 raised for scholarships**
-
- **2022 – Columbus, NE – Elks Country Club**

2021 EMPLOYEE CAMPAIGN



- CCCF Board of Directors (100%)
- Board of Governors (91%)
- Foundation Office (100%)
- Administration/Area Office (77%)
- Columbus/Ord (55%)
- Grand Island (68%)
- Hastings (68%)
- Centers (Kearney, Holdrege, Lexington) (65%)



Central
COMMUNITY
COLLEGE



Central
COMMUNITY
COLLEGE

Foundation

— YOU'RE INVITED TO OUR —

COMMUNITY APPRECIATION NIGHT

THURSDAY

NOVEMBER **11** 2021

4:30 – 7:00

IN THE EVENING

TOMMY GUNZ

1607 S. Locust St. Ste. B
Grand Island, NE 68801

*Since 1973, CCC has served the community of Grand Island and surrounding region by working to meet the needs of its students and community partners. CCC's mission remains the same **maximizing student and community success.***

Refreshments sponsored by CCC Foundation.

Hors d'oeuvres sponsored by CCC-Grand Island Campus.

Join us for an evening reception as we say **THANK YOU**
to our community partners and friends.

COMMUNITY APPRECIATION EVENT

Showcase Grand Island Campus Programs
and Partnerships

Open House Social – 4:30pm to 7:00pm

Thursday, November 11, 2021

Tommy Gunz – Grand Island, NE

 **Central**
COMMUNITY
COLLEGE
Foundation

Questions or Comments

CONTACT INFORMATION:



DEAN MOORS, CCCF EXECUTIVE DIRECTOR

PH/FAX: 402-460-2153

CELL: 402-469-7916

EMAIL: dmoors@cccneb.edu



JESSICA ROHAN, CCCF DEVELOPMENT DIRECTOR

PH/FAX: 402-460-2165

CELL: 402-469-3052

EMAIL: jessicarohan@cccneb.edu



CHERI BEDA, CCCF ALUMNI DIRECTOR

PH/FAX: 402-460-2157

EMAIL: cheribeda@cccneb.edu



CCC Foundation

PH: 402-460-2151

EMAIL: foundation@cccneb.edu

