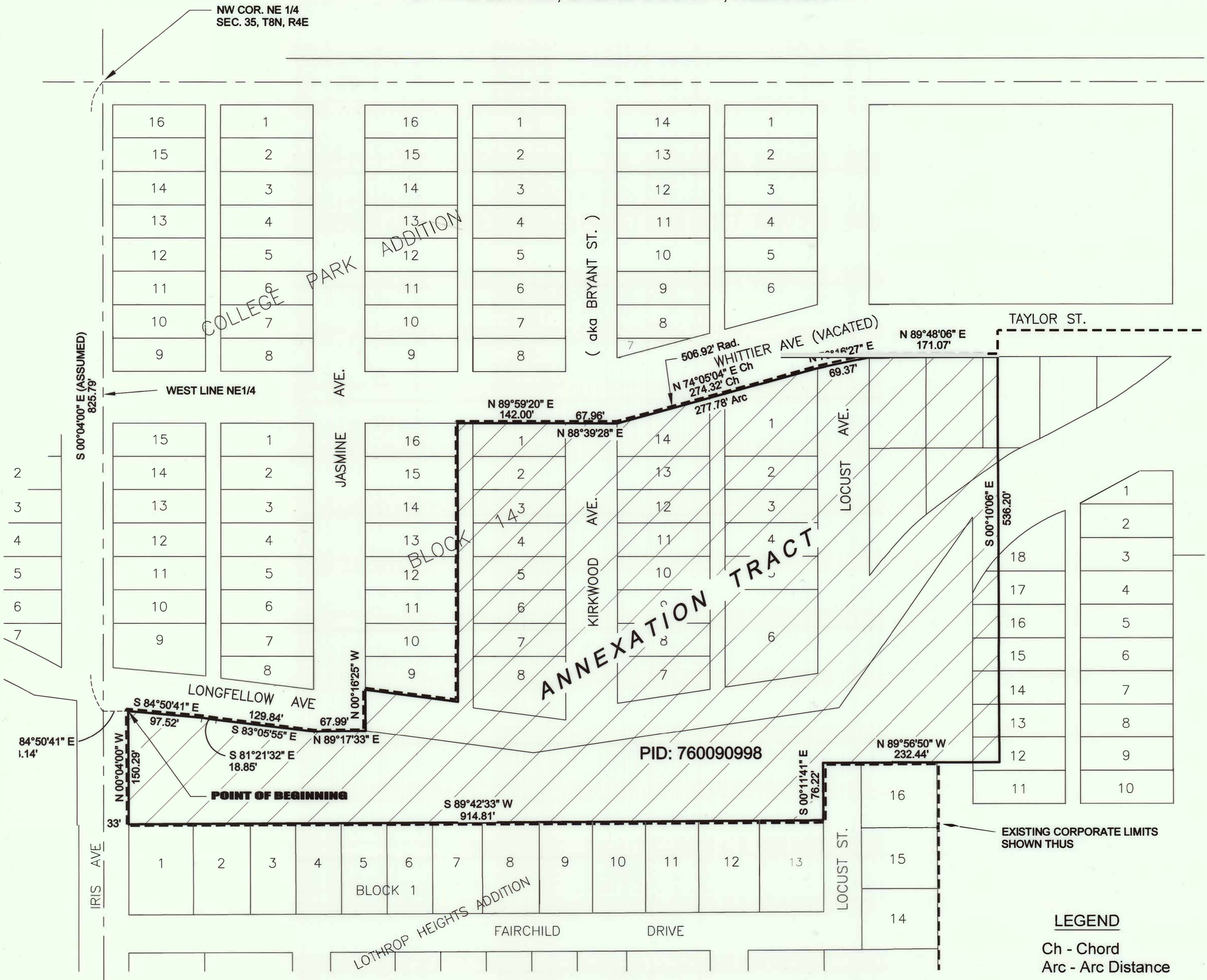
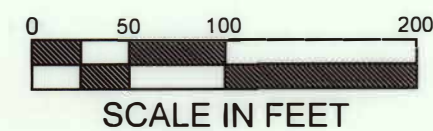


# ANNEXATION AREA #6

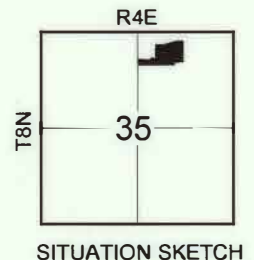
LOCATED IN THE NE1/4 OF SECTION 35, T8N, R4E  
OF THE 6th P.M., SALINE COUNTY, NEBRASKA



ANNEXATION AREA #6  
LEGAL DESCRIPTION



226.352A  
12/27/2022  
RTK



A tract of land composed of Lot 43 Irregular Tracts, part of Lot 44 Irregular Tracts, a Tract of land from Quitclaim Deed 2022-01588, a Tract of land owned by Doane College and the S 1/2 of vacated Whittier Avenue adjacent to Block 14 in "College Park Addition", located in the NE1/4 of Section 35, T8N, R4E, of the 6<sup>th</sup> P.M., Crete, Saline County, Nebraska, more particularly described as follows:  
Referring to the northwest corner of the NE 1/4; thence south on the west line of the NE 1/4, on an assumed bearing of S 00°04'00" E, for a distance of 825.79 feet to a point of intersection with the south line of Longfellow Avenue; thence S 84°50'41" E, on the south line of Longfellow Avenue, for a distance of 33.14 feet to a point on the east 33-foot line of Iris Street, said point being the point of beginning; thence continuing on the south line of Longfellow Avenue the following four courses:  
S 84°50'41" E for a distance of 97.52 feet; thence S 81°21'32" E for a distance of 18.85 feet; thence S 83°05'55" E for a distance of 129.84 feet; thence N 89°17'33" E for a distance of 67.99 feet, to a point on the east line of Jasmine Road extended south; thence N 00°16'25" W, on the east line of Jasmine Road extended south to the southwest corner of Lot 9, Block 14, College Park Addition; thence southeasterly along the south line of said lot 9, to the southeast corner of said lot 9; thence northerly, on the east line of Lots 9-16, Block 14, College Park Addition, to the northeast corner of said Lot 16; thence N 89°59'20" E, on the south line of vacated Whittier Avenue, for a distance of 142.00 feet, to a point on the west line of Bryant Street; thence on the south line of vacated Whittier Avenue, the following 3 courses:  
thence N 88°39'28" E for a distance of 67.96 feet; thence with a curve turning to the left, with an arc length of 277.78 feet, with a radius of 506.92 feet, with a chord bearing of N 74°05'04" E, with a chord distance of 274.32 feet; thence N 78°16'27" E for a distance of 69.37 feet, to a point on the south line of Taylor Street; thence N 89°48'06" E, on the south line of Taylor Street, for a distance of 171.07 feet; thence S 00°10'06" E for a distance of 536.20 feet; thence N 89°56'50" W for a distance of 232.44 feet, to a point of the west line of Locust Street in "Lothrop Heights Addition"; thence S 00°11'41" E, on the west line of Locust Street in "Lothrop Heights Addition", for a distance of 76.22 feet, to the northeast corner of Lot 13, Block 1, "Lothrop Heights Addition"; thence S 89°42'33" W, on the north line of Block 1, "Lothrop Heights Addition", for a distance of 914.81 feet, to the northwest corner of Lot 1, Block 1, "Lothrop Heights Addition", said point being on the east 33 feet line of Iris Street; thence N 00°04'00" W, on the east line of Iris Street, for a distance of 150.29 feet, to the point of beginning.

The above-described parcel, also identified as County Assessor PID: 760090998.

**SURVEYOR'S CERTIFICATE**  
I, Lynn D. Birkel, Nebraska Registered Land Surveyor No. 497, duly registered under the Land Surveyor's Regulation Act, do hereby certify that this Annexation Plat was prepared by me or under my direct supervision, from information taken from previous surveys and recorded documents without any field surveying being performed, and to the best of my knowledge and belief the above and foregoing is a true and correct depiction.



*Lynn D. Birkel* 01/12/23  
Lynn D. Birkel, Nebraska L.S. #497  
GILMORE & ASSOCIATES, INC.

## APPROVAL

APPROVED AND ACCEPTED BY THE CITY COUNCIL OF THE CITY OF CRETE, SALINE COUNTY, NEBRASKA, BY ORDINANCE NO. \_\_\_\_\_ PASSED THIS \_\_\_\_\_ DAY OF \_\_\_\_\_, 2023.

JERRY WILCOX  
CITY CLERK