



ARLINGTON PUBLIC SCHOOLS

Visioning Workshop
January 12, 2026

WELCOME

Agenda

- 01 Welcome & Introductions
- 02 Recap
- 03 Program Review
- 04 Option Review
- 05 Cost Estimating
- 06 Schedule Review



Recap



WELCOME

Workshops

Why Change?

Understanding School Design

Learning Connections

Priorities Activity

Pictures Worth a 1000 Words

I See | We See

A Day in the Life Activity

Visual Listening

Design Your Dream school

WE SEE

We See Statement

We see Arlington Public Schools with modern facilities that stay true to our rural roots—an inviting, community-centered place where students feel valued, build real-world skills, and grow with confidence in a functional, inspiring space.

GUIDING PRINCIPALS



Welcoming and Inclusive: Create environments where every person feels safe, valued, and invited.



Foster Experiential Learning: Design for curiosity, creativity, and hands-on, real-world engagement.



Support Well-Being and Nature Connection: Promote health, calm, and whole-person development through nature-rich, wellness-centered design.



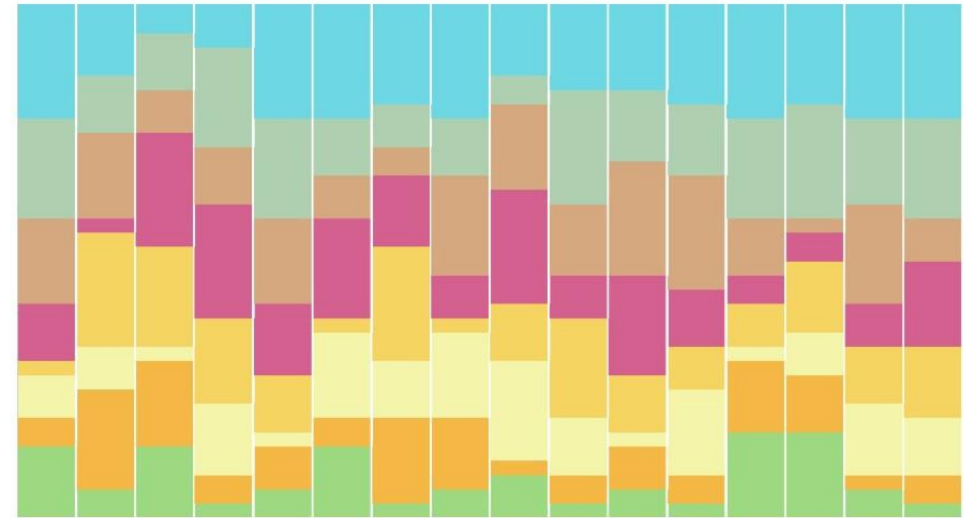
Design with Purpose and Future Vision: Build functional, timeless spaces that are adaptable, innovative, and grounded in community heritage.

VISION

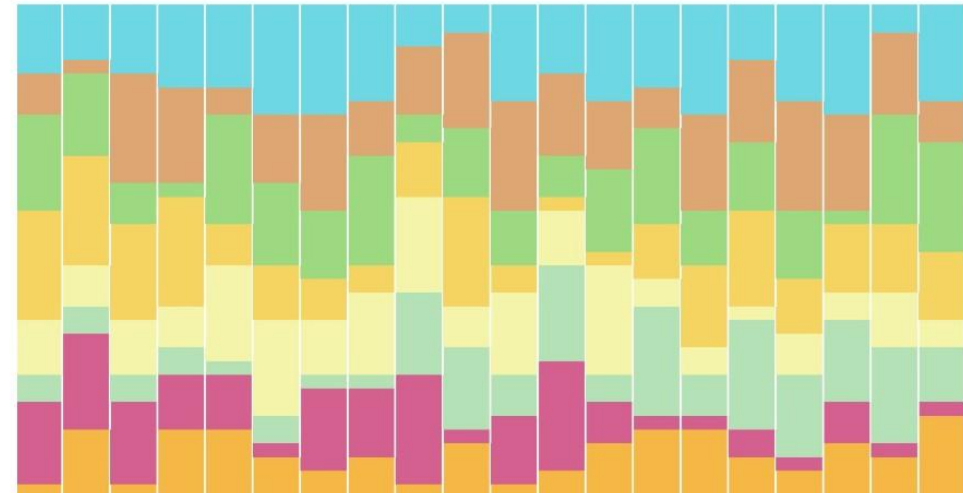
Participant Priorities

Arlington staff, faculty, parents, and community members were asked to rank their top priorities for the project's overall success to gain a further understanding of the communities needs. Nine unique priorities were provided based on information previously gathered from teacher interviews. Each participant ranked the priorities in order from high to low based on the individual's definition of success.

EXPANDED ACADEMIC PATHWAYS (CTE RENO)	ACTIVITIES ENTRY IDENTITY & EXPANDED COMMONS	FLEXIBLE LEARNING & COLLABORATION SPACE
FINE & PERFORMING ARTS EXPANSION	EXPANDED ATHLETIC SPACE (WRESTLING ROOM)	SPECIAL EDUCATION & RESOURCE SPACE
LOCKER ROOMS & RESTROOMS	PARKING AND SITE CIRCULATION	OTHER (WRITE IN)



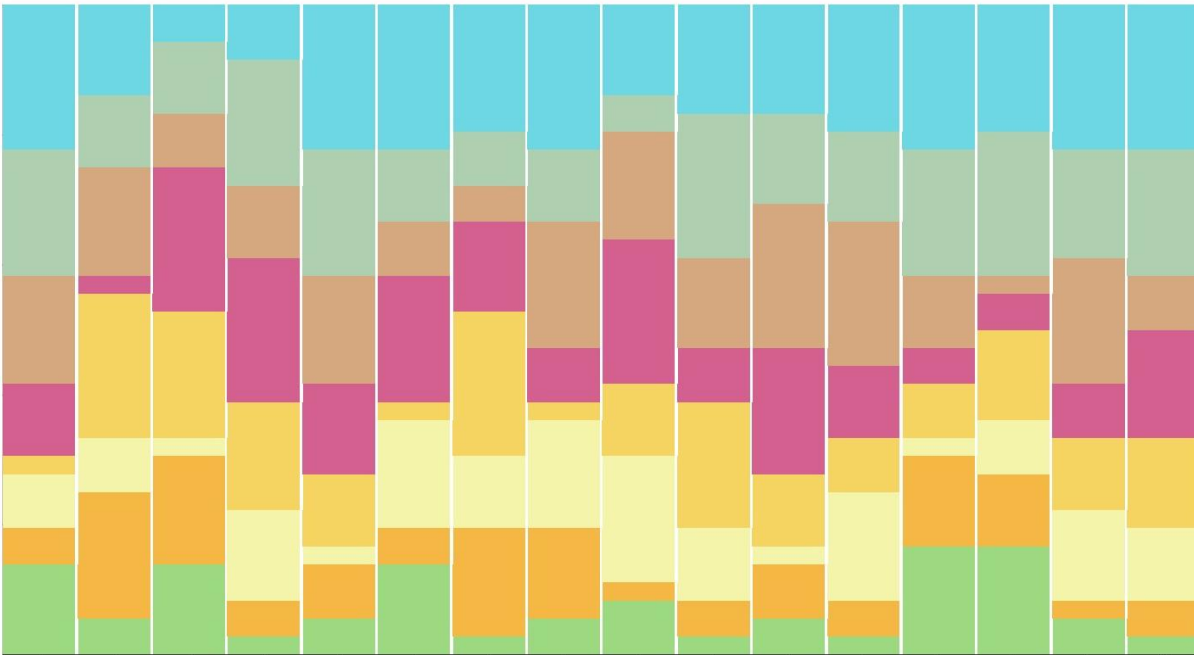
Priority rankings following the first workshop with the community. Expanded academic pathways, activities entry identity, and flexible learning space ranked as the top three priorities.



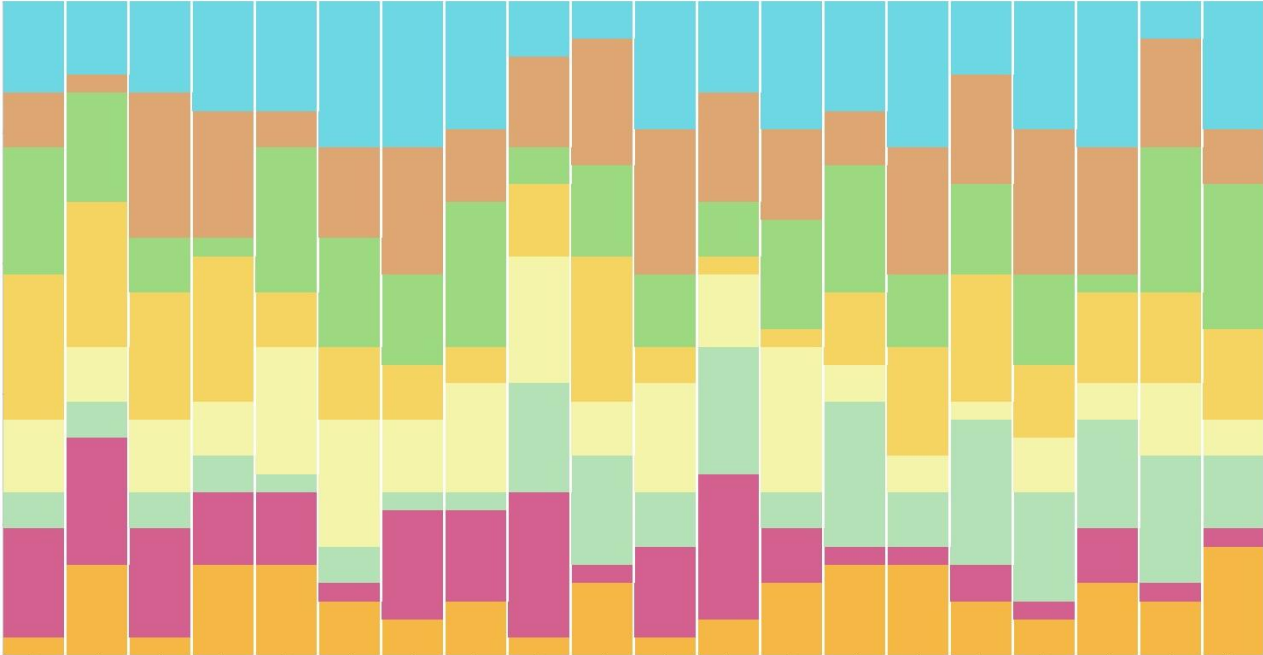
Priority rankings from students, parents, and teachers following parent-teacher conferences. Expanded academic pathways and flexible learning and collaboration space remained in the top three priorities with the addition of parking and site circulation

Recap

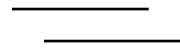
WORKSHOP PRIORITY RESULTS



PARENT-TEACHER CONFERENCE PRIORITY RESULTS



- Expanded Academic Pathways (CTE Reno)
- Activities Entry Identity & Expanded Commons
- Flexible Learning & Collaboration Space
- Fine & Performing Arts Expansion
- Expanded Athletic Space (Wrestling Room etc.)
- Special Education & Resource Space
- Locker Rooms & Restrooms
- Parking & Site Circulation



SPACES FOR CREATIVE WORK **LARGE GROUP SPACES** **DIFFERENTIATED TEACHING**
VISIBLE LEARNING **TEACHING THROUGH INSTRUCTIONAL TECHNOLOGY**
FURNITURE THAT SUPPORTS INDIVIDUALS **OUTDOOR SPACES**
PRESENTATION SPACES **AUTHENTIC/REAL WORLD LEARNING**
FLEXIBLE TECHNOLOGY **INQUIRY BASED TEACHING**
ERGONOMIC FURNITURE **CONNECTIONS TO NATURE** **OPTIONAL PRIVACY**
HEALTH AND WELLNESS **WORKSHOP MODEL TEACHING**
SPACES THAT ALLOW MOVEMENT
PERSONALIZED LEARNING **FLEXIBLE FURNITURE TYPES**

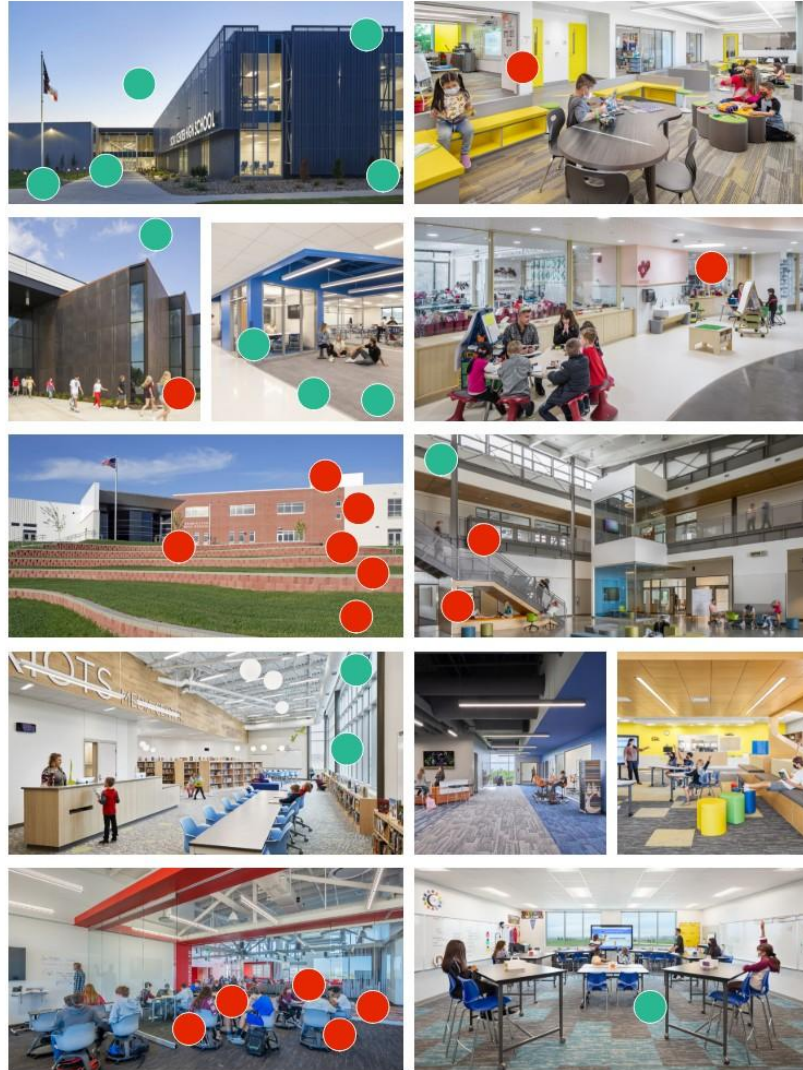
VISUAL LISTENING



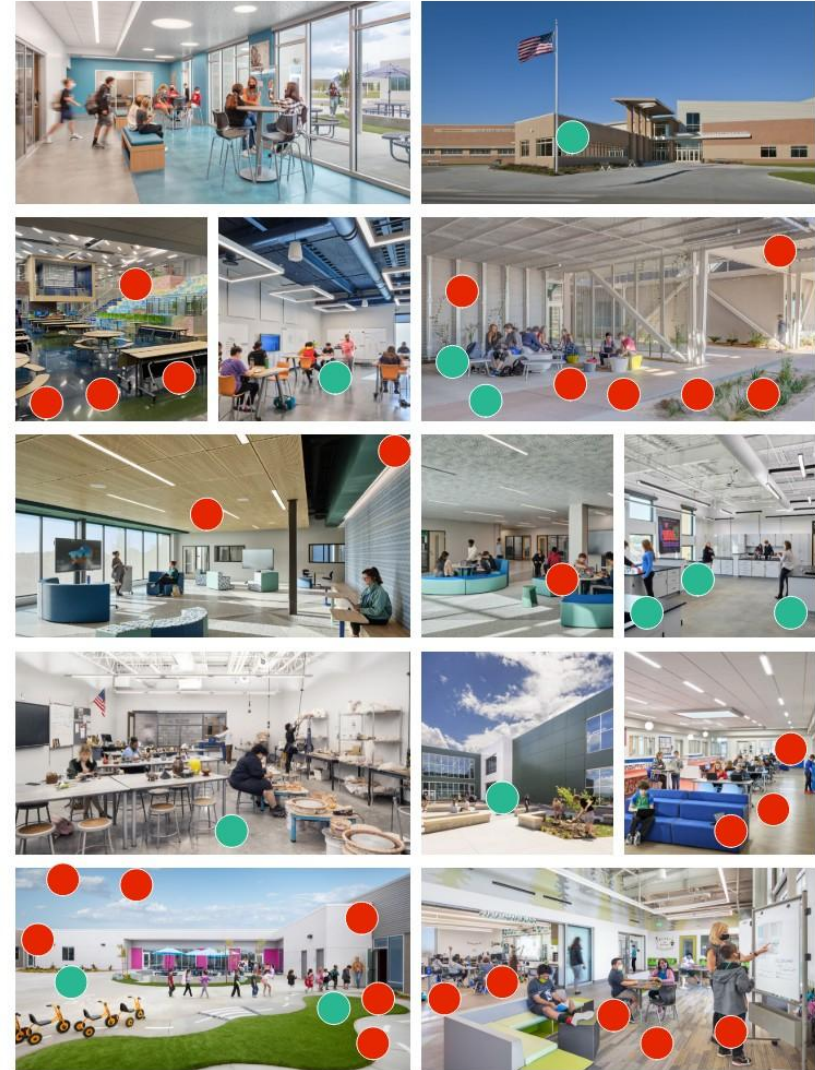
EDUCATIONAL VISUALIZATION

Visioning Photo Exercise

● Likes ● Dislikes



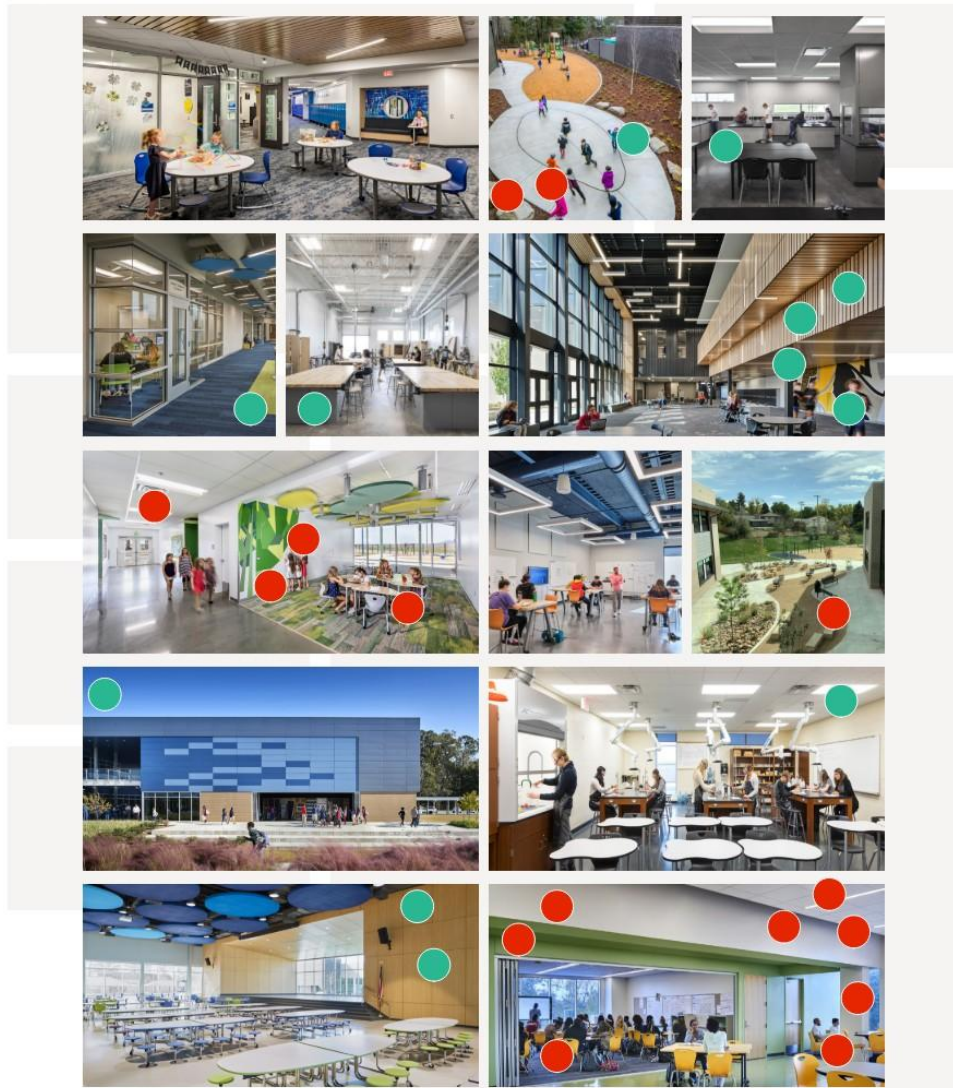
● Likes ● Dislikes



EDUCATIONAL VISUALIZATION

Visioning Photo Exercise

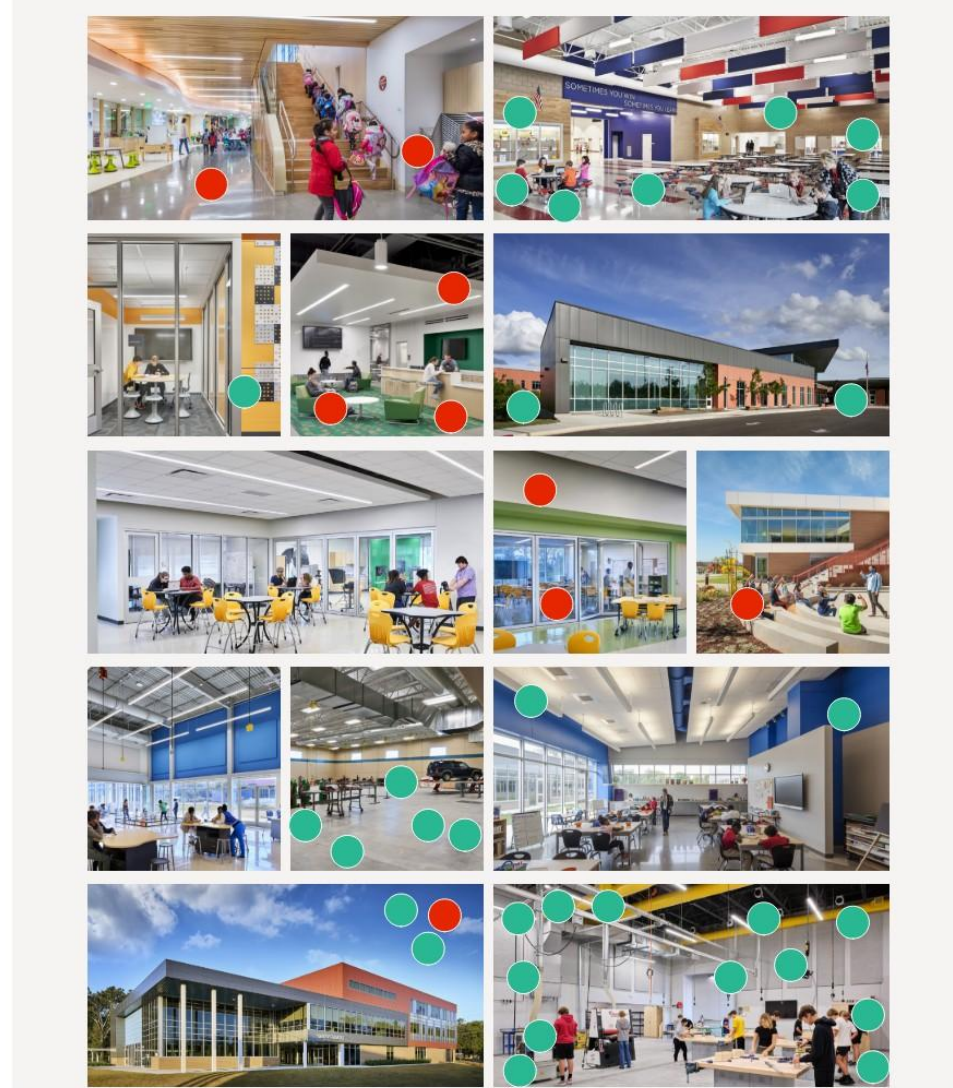
● Likes ● Dislikes



EDUCATIONAL VISUALIZATION

Visioning Photo Exercise

● Likes ● Dislikes



Design Your Dream School



DREAM SCHOOL



FRONT DOOR



OUTDOOR LEARNING ENVIRONMENTS



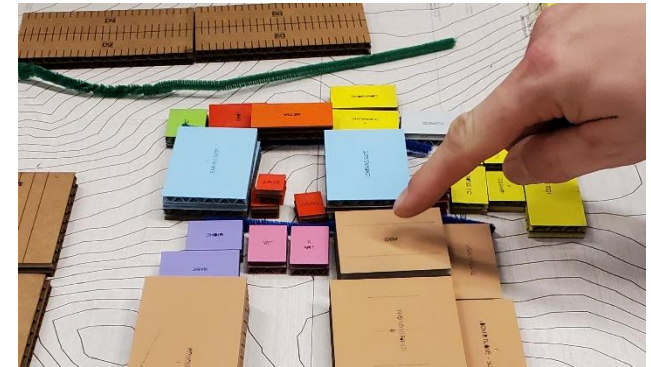
BUILDING ADJACENCIES



OUTDOOR PLAY / ACTIVITY



TRAFFIC FLOW – BUS, CAR, PEDESTRIAN



DREAM SCHOOL



CRITICAL DESIGN ELEMENTS



SPECIFIC FACILITY NEEDS



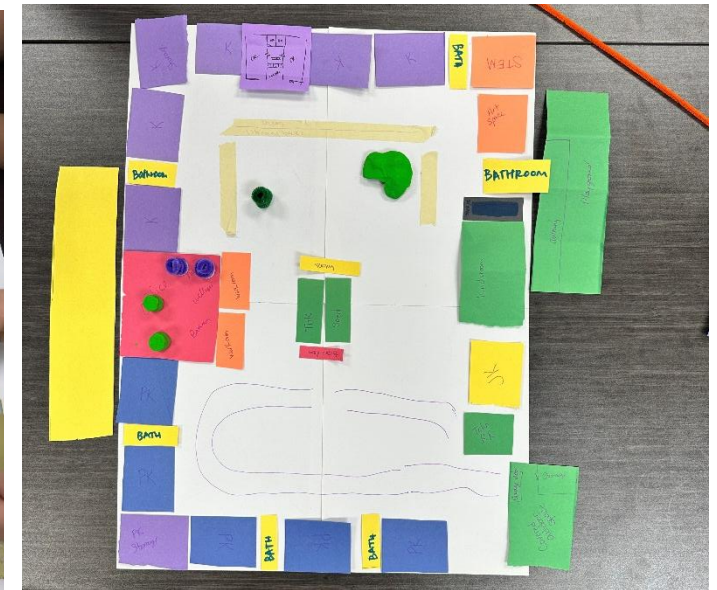
UNIQUE OPPORTUNITIES

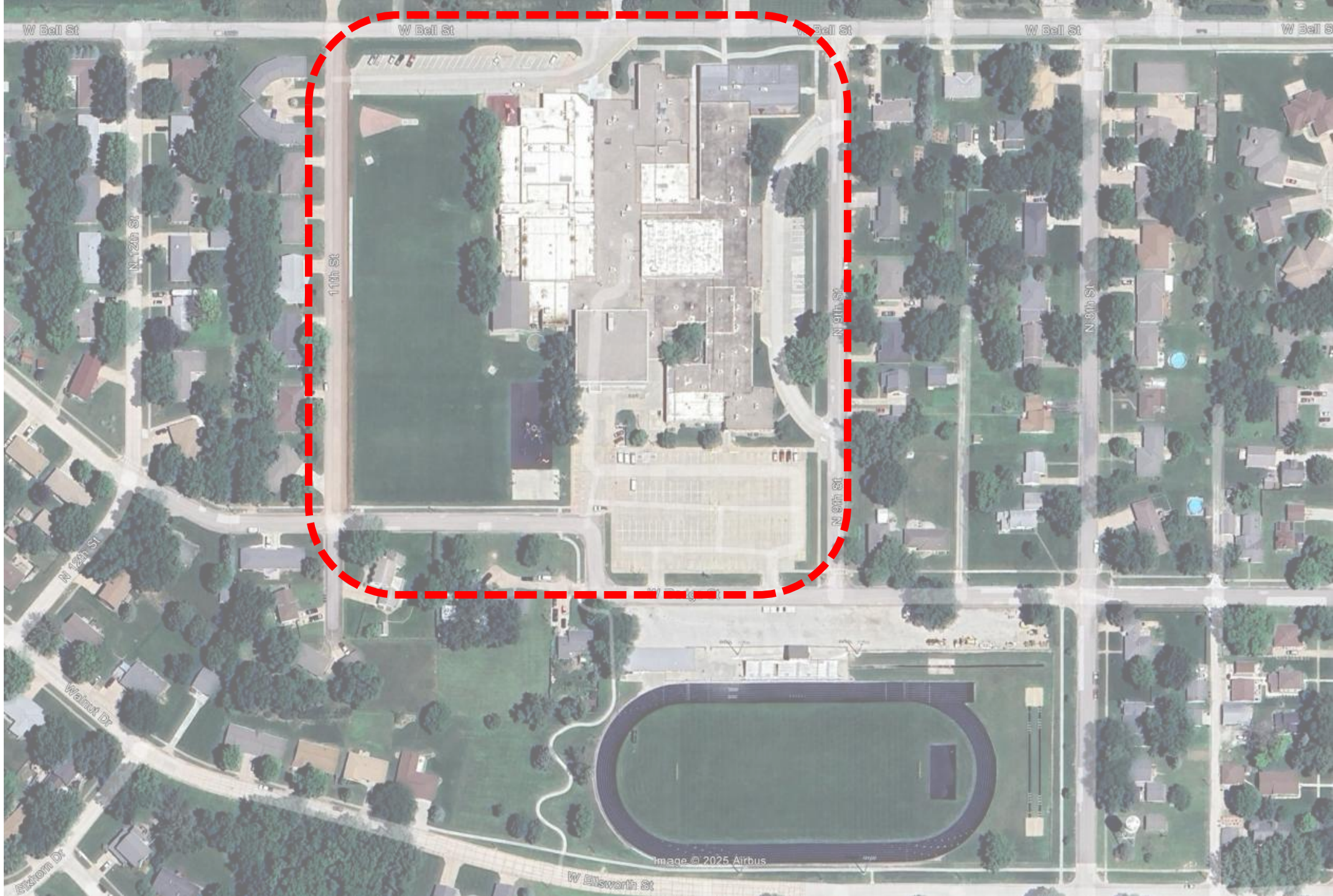


STUDENT AND STAFF NEEDS



IMPORTANT ADJACENCIES

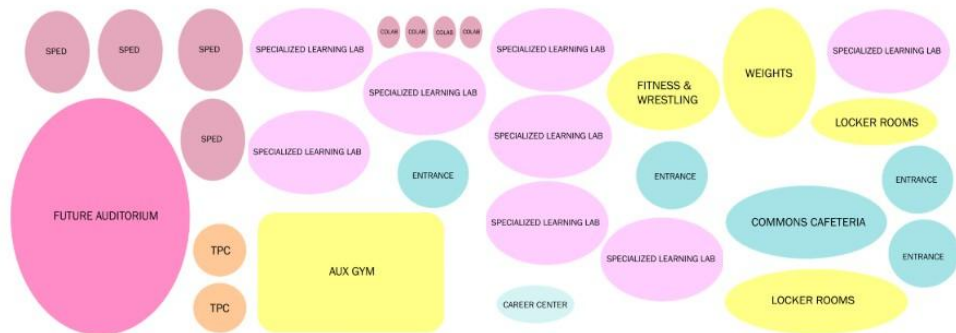




MACRO ORGANIZATION

Design Your Dream School

The Arlington team was supplied with the site plan as well as manipulatives labeled with all the items on the priority list. They were instructed to utilize these pieces and put them on the site where they thought they should be and to make sure to include adjacencies as well as any notes. At the conclusion each group presented to the entire committee and addressed any questions. Each committee member was asked to identify items they liked and did not with each plan and to pick their 2 favorite options



Program Review



Arlington Public Schools

PK-12 School - Space Program Summary

	EXISTING			PROPOSED			DEFICIENCY	2026 Scope
DEPARTMENT / SPACE	# of Spaces	ea Space	Total Net SF	# of Spaces	ea Space	Total Net SF	Total Net SF	Total Gross SF
LIFE SKILLS			1240	subtotal		2300	1060	3220
15.01 Classroom	1	620	620	1	900	900	280	
15.02 Foods lab	1	620	620	1	900	900	280	
15.03 Pantry / Storage			0	1	100	100	100	
15.04 Clothing / Textiles Lab			0	0	0	0	0	
15.05 Samples Storage			0		0	0	0	
15.06 Laundry / Utility			0	1	80	80	80	
15.07 Child Development Lab			0			0	0	
15.08 Observation			0		0	0	0	
15.09 Storage			0	1	100	100	100	
15.10 Changing / Toilet			0	1	120	120	120	
15.11 Office			0			0	0	
15.12 Collaboration Space			0	1	100	100	100	
15.13			0		0	0	0	

Notes:

PHYSICAL EDUCATION / ATHLETICS		38770		subtotal		44540	5770	6924
20.01	Lobby	1	1500	1500	1	1500	1500	0
20.02	Public Restrooms	2	350	700	2	350	700	0
20.03	Concessions	1	200	200	1	200	200	0
20.04	Gymnasium - Competition	1	10800	10800	1	10800	10800	0
	.01 Elevated Track			0			0	0
	.02 Gymnasium Storage			0	1	300	300	300
	.03 Athletic Storage			0	1	300	300	300
20.04	Gymnasium - Competition	1	7600	7600	1	7600	7600	0
	.01 Gymnasium Storage	2	200	400	2	200	400	0
	.02 Athletic Storage	1	280	280	1	280	280	0
20.05	Gymnasium - Elementary	1	6900	6900	1	6900	6900	0
	.01 Storage	1	335	335	1	335	335	0
20.06	Weight Room	1	3950	3950	1	3950	3950	0
	.01 Weights Storage			0	0	0	0	0
20.07	Exercise / Fitness / Aerobics			0	0	0	0	0
	.01 Exercise Storage			0	0	0	0	0
20.08	Wrestling Room	0	0	0	1	4000	4000	4000 3 mats
	.01 Wrestling Storage	0	0	0	1	100	100	100
20.09	Classroom / Team Meeting Room	0	0	0	1	800	800	800
20.10	Training Room	1	280	280	1	280	280	0
	.01 Training Storage			0	1	100	100	100
20.11	Laundry			0		0	0	0
20.12	MS Locker Room	2	950	1900	2	950	1900	0
	.01 Showers / Drying	8	10	80	8	10	80	0
	.02 Toilet	2	60	120	2	60	120	0
20.13	HS Locker Room	2	720	1440	2	720	1440	0
	.01 Showers / Drying	9	10	90	9	10	90	0
	.02 Toilet	2	100	200	2	100	200	0
20.13	Athletic Locker Room	2	500	1000	2	500	1000	0
	.01 Showers / Drying	2	120	240	2	120	240	0
	.02 Toilet	2	50	100	2	50	100	0
20.14	Official's Locker Room	2	65	130	2	65	130	0
	.01 Showers / Drying	2	25	50	2	25	50	0
	.02 Toilet			0	0	0	0	0
20.15	Staff Locker Room			0		0	0	0
	.01 Showers / Drying			0		0	0	0
	.02 Toilet			0		0	0	0
20.16	Phys. Ed. Office	3	65	195	3	65	195	0
20.17	Athletic Office	2	100	200	2	100	200	0
20.18	Storage	1	80	80	1	250	250	170

Notes:

	EXISTING			PROPOSED			DEFICIENCY	2026 Scope
DEPARTMENT / SPACE	# of Spaces	ea Space	Total Net SF	# of Spaces	ea Space	Total Net SF	Total Net SF	Total Gross SF
AUDITORIUM			500	subtotal		13510	13010	18914
3.01 Lobby			0	1	2000	2000	2000	
3.02 Ticket Booth			0	1	120	120	120	
3.03 Concessions			0	1	150	150	150	
3.04 Seating Area - Main House			0	1	6600	6600	6600	
3.05 Black Box / Forum Seating			0		0	0	0	
3.06 Stage	1	500	500	1	2800	2800	2300	
3.07 Orchestra Pit			0	0	375	0	0	
3.08 Lighting Control			0	1	150	150	150	
3.09 Sound Control			0	1	150	150	150	
3.10 Dressing Room / Toilet							0	
.01 Men			0	1	125	125	125	
.02 Women			0	1	125	125	125	
3.11 Makeup			0	1	240	240	240	
3.12 Green Room			0		0	0	0	
3.13 Scene / Stage Shop			0	1	500	500	500	
3.14 Shop Storage			0	1	50	50	50	
3.15 Stage Storage			0	1	150	150	150	
3.16 Prop Storage			0	1	150	150	150	
3.17 Costume Storage			0	1	100	100	100	
3.18 Flat Storage			0	1	100	100	100	
3.19			0		0	0	0	

Notes:

DEPARTMENT / SPACE	# of Spaces	ea Space	Total Net SF	# of Spaces	ea Space	Total Net SF	Total Net SF	Total Gross SF
STUDENT SERVICES / SUPPORT			1395	subtotal		4375	2980	
24.01 Lockers	0	0	0	0	0	0	0	
24.02 Social Commons	1	500	500	2	500	1000	500	
24.03 Learning Commons			0	3	800	2400	2400	
24.04 School Bank / Flex Room	1	725	725	1	725	725	0	
24.05 Storage	1	170	170	1	250	250	80	

Notes:

DEPARTMENT / SPACE	EXISTING			PROPOSED			DEFICIENCY	2026 Scope
	# of Spaces	ea Space	Total Net SF	# of Spaces	ea Space	Total Net SF	Total Net SF	Total Gross SF
TECHNOLOGY / INDUSTRIAL			5278			9906	4628	13868
TECHNOLOGY / VOCATIONAL ARTS					subtotal			
25.01 Classroom	1	670	670	1	670	670	0	
25.02 Wood Lab	1	1200	1200	1	1200	1200	0	
25.03 Construction Lab			0	1	2000	2000	2000	
25.04 Metals Lab	1	2200	2200	1	2200	2200	0	
25.05 Manufacturing Lab			0	1	1000	1000	1000	
25.06 Auto Mechanics Lab			0	1	480	480	480	
25.07 Auto Body Lab			0		0	0	0	
25.08 Agriculture Classroom	1	840	840	1	840	840	0	
25.09 Technology/Robotics Lab			0	0	0	0	0	
25.10 Finishing Room			0	1	180	180	180	
25.11 Materials Storage	1	168	168	2	168	336	168	
25.12 Project Storage	1	200	200	2	200	400	200	
25.13 Tool Storage			0	2	200	400	400	
25.14 Locker/Changing			0	2	100	200	200	
25.15 Office			0	0	0	0	0	
25.16 Showroom			0	0	0	0	0	
25.17			0		0	0	0	

Notes:

TOTAL NET ASSIGNABLE AREA

BUILDING INFRASTRUCTURE

TOTAL BUILDING AREA

42933

This Number includes a grossing factor for each new space

Concept Studies





Option A

Expanded Academic pathways

New Construction Lab

New Manufacturing Lab

Finishing Room

Tool Storage

Locker Room/Changing Rooms

New Addition: 3300 SF

Reno 6500 SF existing space

Wrestling / Auxiliary Space (4800 SF)

**Total Renovation and New Additions =
14,600 SF**

Option A



Option A





Option B

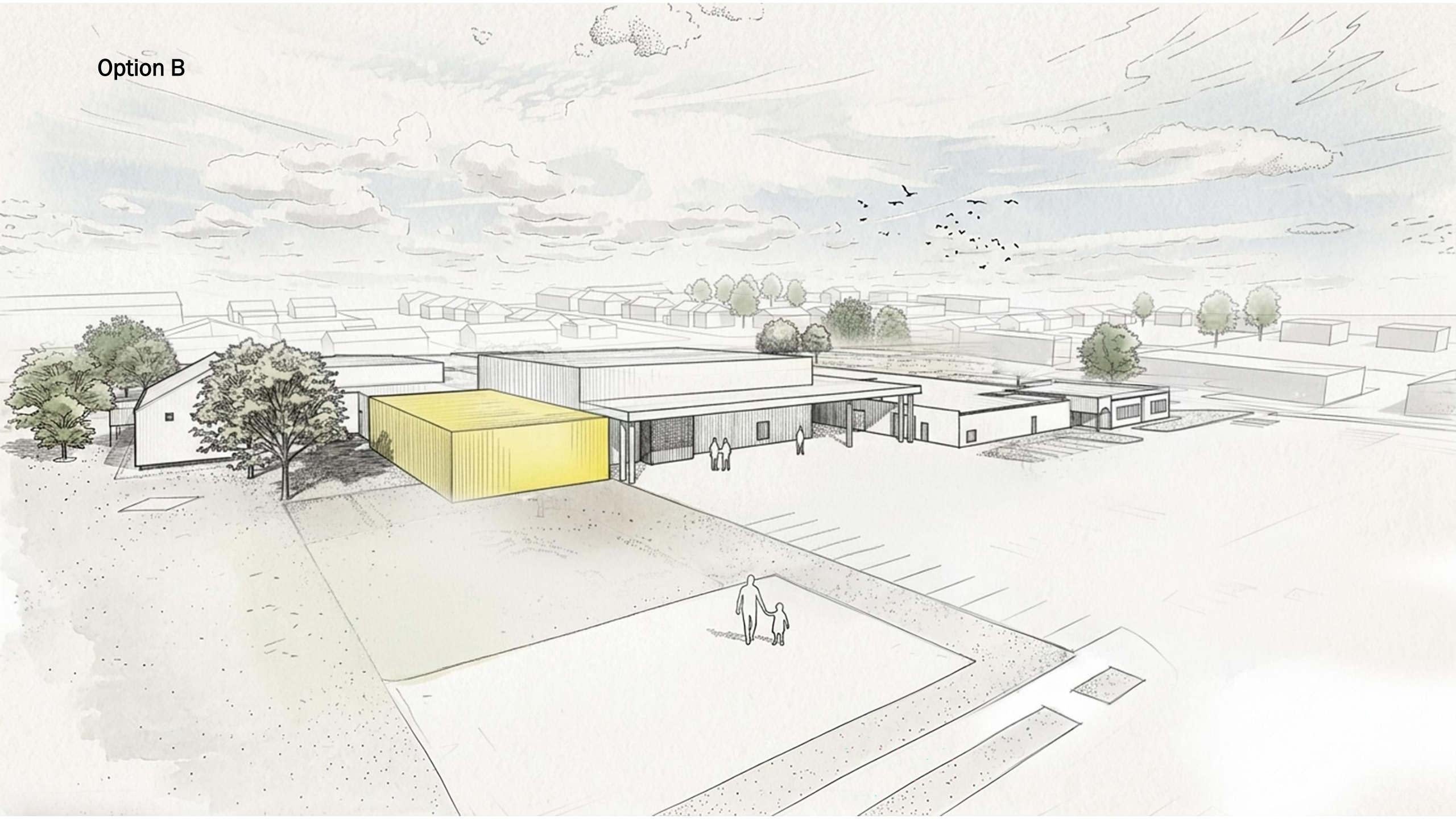
- Expanded Academic pathways
- New Construction Lab
- New Manufacturing Lab
- Finishing Room
- Tool Storage
- Locker Room/Changing Rooms
- New Addition: 3300 SF
- Reno 6500 SF existing space

Wrestling / Auxiliary Space (5400 SF)

Activities Entry Canopy

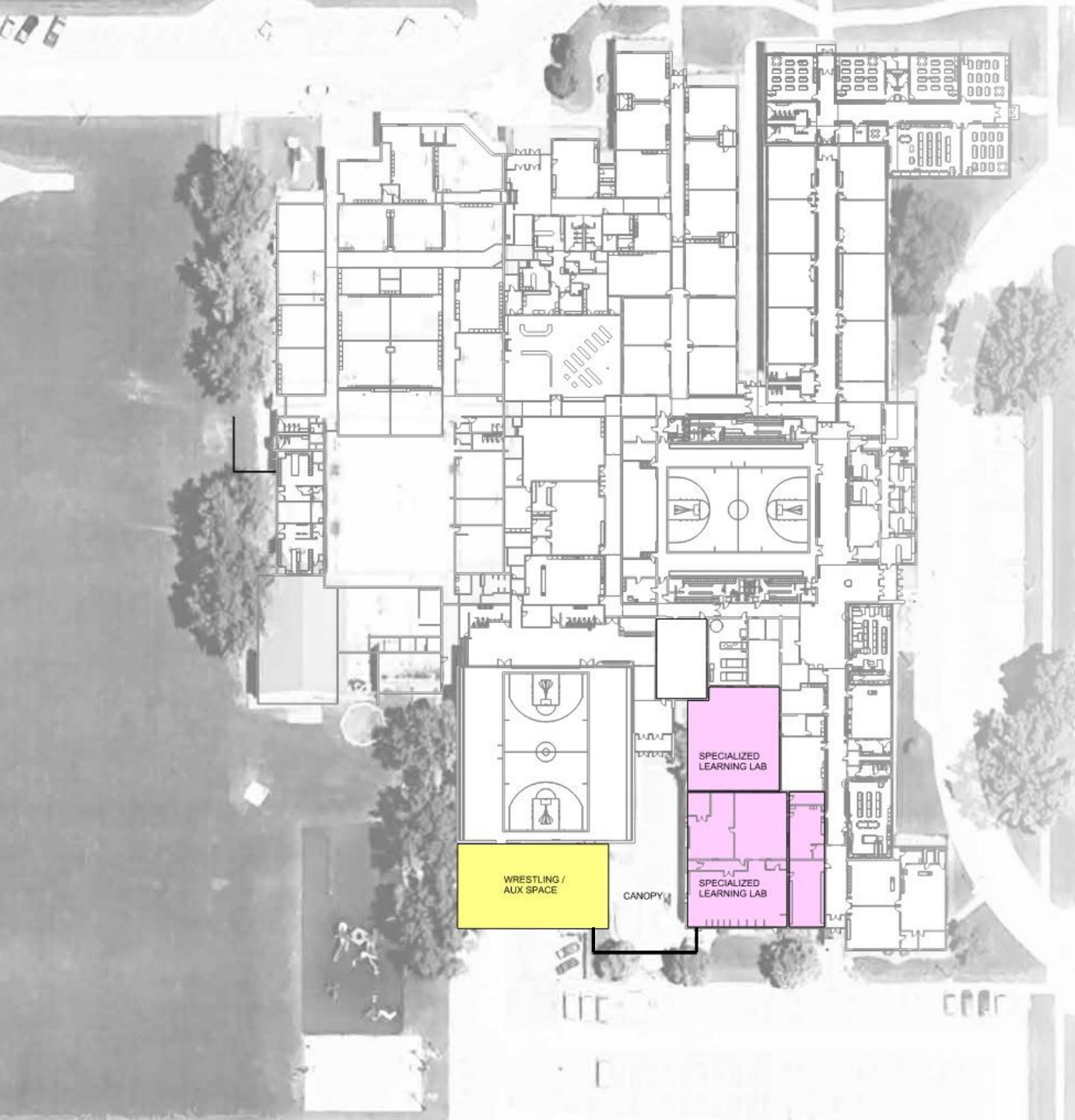
**Total Renovation and New Additions =
15,000 SF**

Option B



Option B



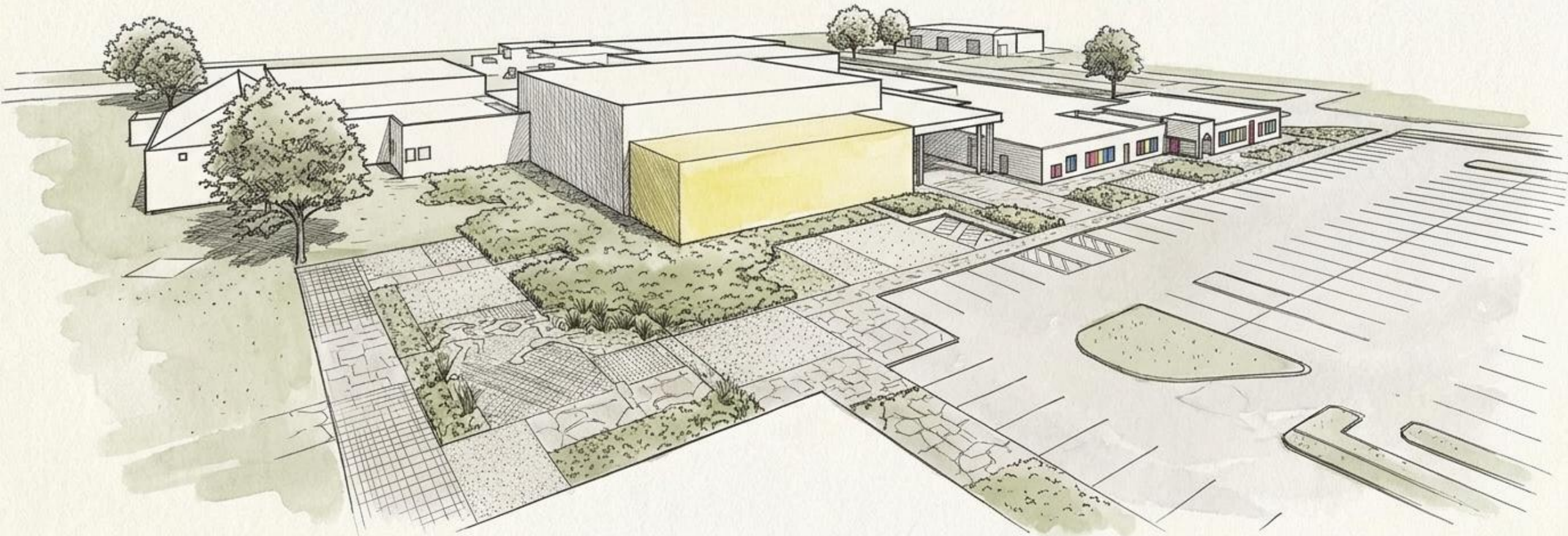


Option C

- Expanded Academic pathways
- New Construction Lab
- New Manufacturing Lab
- Finishing Room
- Tool Storage
- Locker Room/Changing Rooms
- New Addition: 3300 SF
- Reno 6500 SF existing space
- Wrestling / Auxiliary Space (5400 SF)
- Activities Entry Canopy

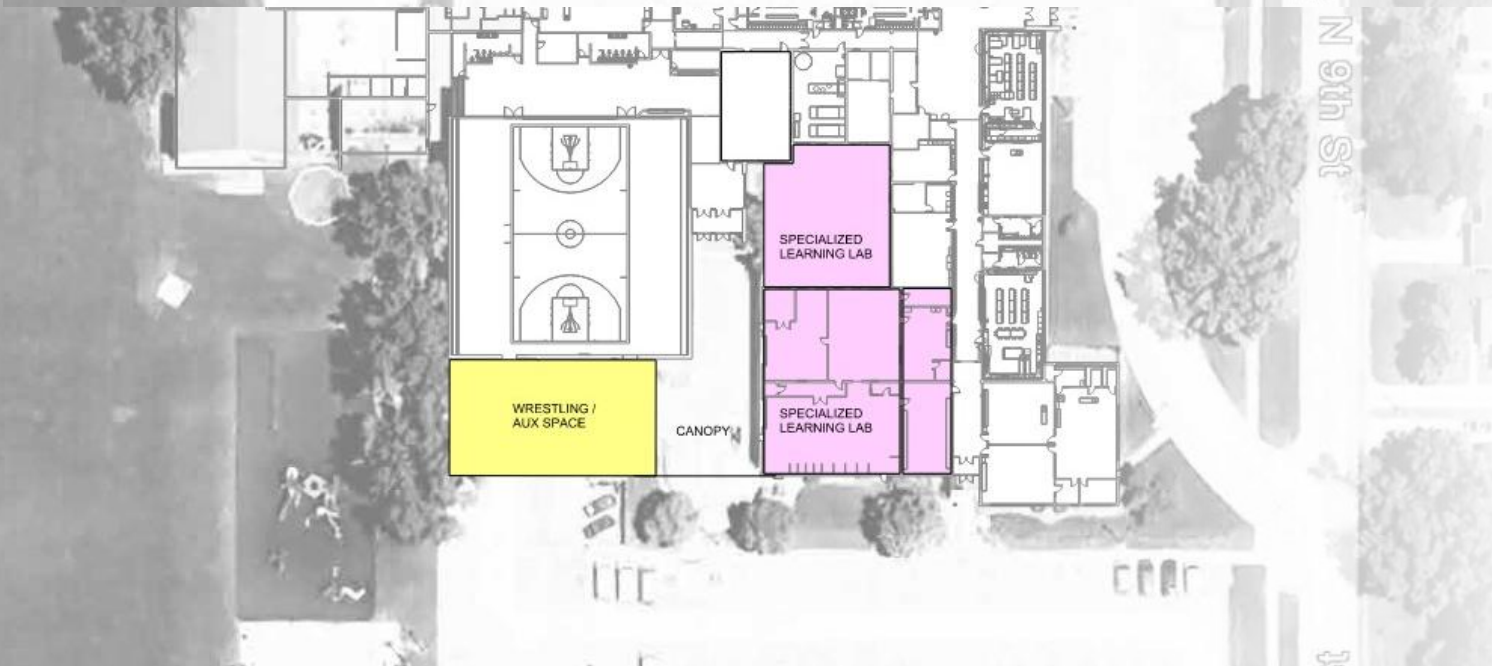
**Total Renovation and New Additions =
15,000 SF**

Option C



Option C





Option D

Expanded Academic pathways

New Construction Lab

New Manufacturing Lab

Finishing Room

Tool Storage

Locker Room/Changing Rooms

New Addition: 3300 SF

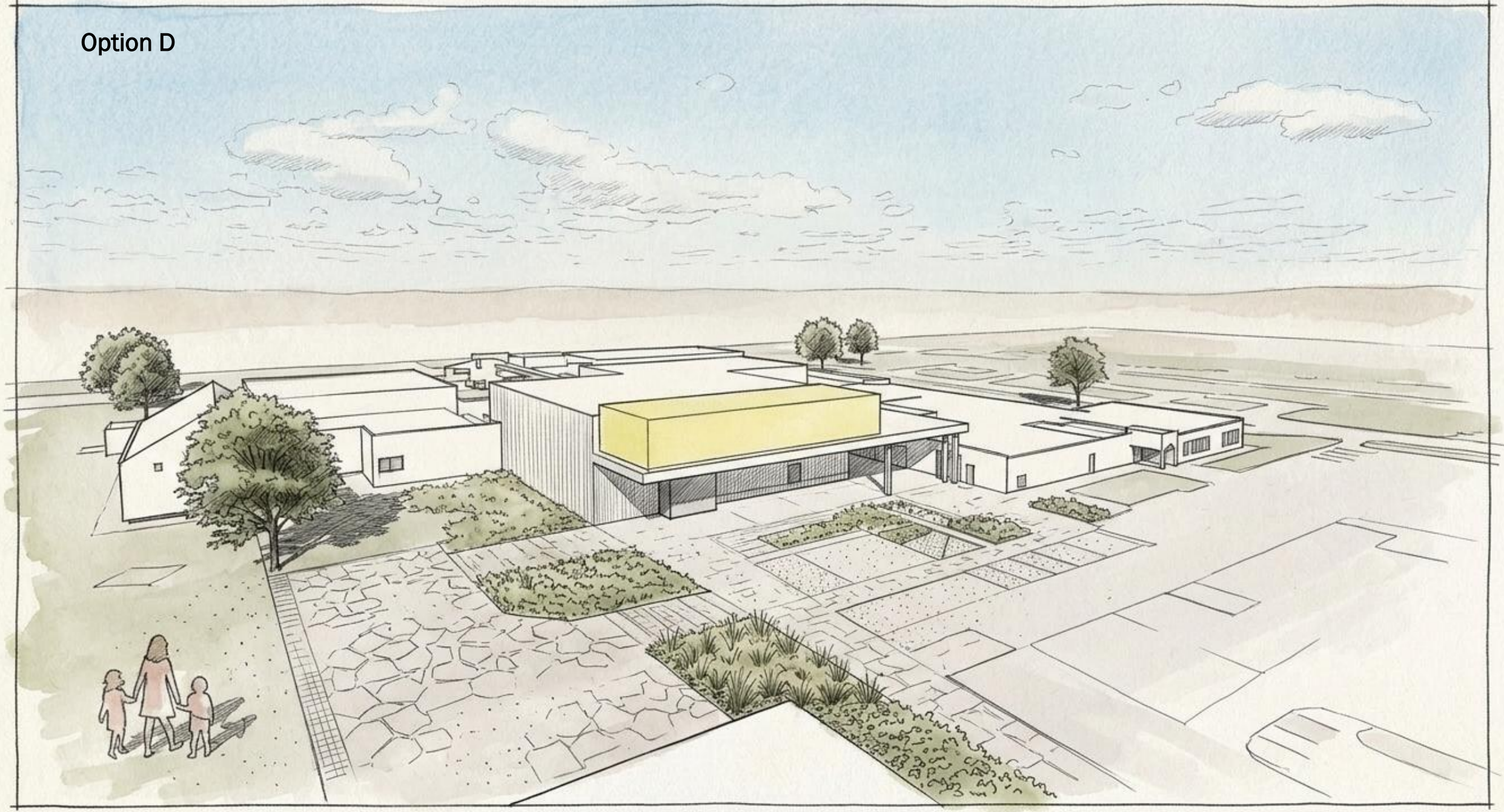
Reno 6500 SF existing space

Wrestling / Auxiliary Space – Second Level
Addition (5400 SF)

Activities Entry Canopy

**Total Renovation and New Additions =
15,000 SF**

Option D



Option D



Next Steps

