

# Learning Support Services & Faculty Resource Center

Candace Walton, Ph.D., V.P. of Innovation and Instruction

Abie Ott, Director of Educational Planning and the FRC

Julie Rican, Instructional Technology Specialist - LSS

# Learning Support Services & Faculty Resource Center Team Leadership

**Candace Walton, Ph.D.**

Vice President  
Innovation & Instruction  
Chief Academic Officer



**Abie Ott**

Director of Educational Planning &  
the Faculty Resource Center  
Area-Wide



**Jeffrey Wisdom**

Director of Instructional Technology  
Area-Wide



# Learning Support Services

The Learning Support Services (LSS) team supports the design, implementation, and delivery of CCC's courses and programs by providing consistent technical- and trouble-shooting support and serving as technical resource for faculty and administration.

We work with Faculty Resource Center and Instruction divisional leadership team(s) to develop focused training and guidance for faculty's use of CCC's learning management system and other technology.

# Learning Support Services

Grand Island Instructional Technology Specialists & Media Producer

**Julie Rican**

Catalog, Bookstore LTI, How to  
documentation for instructions



**Jennifer Walker**

Live Video Scheduling



**Dakota Jones**

Media Producer, Yuja



# Learning Support Services

Hastings & Columbus Instructional Technology Specialists

**Sondra Meyer**

Electronic Textbook  
Integration



**Peggy Chessmore**

CCC 101, Webinar Training



**Colleen Vetick**

Assists with XR lab  
Student Help Videos



**Anita Kaspar**

Part-time



# Faculty Resource Center

The FRC is dedicated to supporting teaching and learning across the college.

We are committed to sharing and supporting educational best practices in:

- cultivating learning communities,
- fostering student engagement and substantive interaction
- course design and delivery,
- ensuring clear course objectives,
- creating impactful instructional activities and effective assessments.



# Faculty Resource Center

Serving all faculty, college-wide.

**Jen Eickmeier**

Instructional Design Consultant  
Columbus



**Bailey Johnson**

Instructional Design Consultant  
Grand Island / Hastings



**Tracy Watts**

Instructional Design Consultant  
Grand Island / Kearney



# Faculty Training & Support

## Faculty Resource Center

- One-on-one or group consultations for personalized advice on and support for teaching and learning
- Workshops and learning sessions
- Program and curriculum design, including support for Nebraska Transfer Initiative courses
- Instructional design and student engagement
- Technology integration to enhance student learning
- College-wide assessment – program, course, cocurricular
- Design and deliver New Educator Workshop (HR collaboration)



# New Educator Workshop (N.E.W.)



Front row (l-r):

Scott Schwalenberg, English (C);  
Meredith Smith, nursing (G);  
Alexander Bray, math and physics (H);  
Ernie Blanchard, business (H);  
Erica Sheldon, nursing (G);  
Thomas Freeman, biology (H);  
Denise Kozel, electrical technology (G);  
and Theresa Martinez, nursing (G).

Back row (l-r):

Rajeev Mendadala, biology (C);  
Raja Mendadala, info technology (G);  
Dani Schwinn, media arts (H);  
Sammy Fernades, speech (G);  
Blair Dreessen, nursing (K);  
Jennifer Eickmeier, FRC (G);  
Bethany Gifford, nursing (C);  
and Carol Fuchser, nursing program dir. (C).

# Faculty Training & Support

Learning Support Services provides technical assistance and support.

For example, over the 2023-2024 academic year:

- Onboarded 86 new College adjuncts & full-time faculty to Canvas.
- Worked with approximately 350 faculty (full- and part-time) per campus with in-person, Webex or phone support for Canvas & link CCC syllabus.
- 24/SU -worked with 80 Early College adjunct faculty to use Canvas, & link CCC syllabus.


- Template
- Home
- Modules
- Grades
- AttendancePlus
- Announcements
- YuJa
- Harmonize
- Cisco Webex
- Office 365
- Follett Discover
- New Analytics
- Rubrics
- Item Banks
- Submit Grades to Colleague
- Accessibility Report
- Lockdown Browser
- ProctorU
- Badges
- People
- Pages
- Files

# Recent Announcements

## CCC Revised Master Template 2024

LSS team:

- 24/FA Updated over 1,400 courses to the revised/updated template
- 24/SU Updated over 100 courses to the revised/updated template.



Welcome to [Type course alpha number and title! (mode of instruction) -remove brackets]

[Start Here \(Course Overview\)](#)[Modules](#)[Library and Student Resources](#)

### Welcome!

Course Syllabus: [Fall 2024](#)

[Add a short message about the course. Examples: Mode of instruction, start & end dates, course length, meeting times, lab times, WebEx course etc. (-remove brackets)]

### Contact Information

Instructor:

Office Hours:

Phone:

Messages: Use the Canvas Inbox (green global navigation bar on the left).

Additional Contact Information: [suggestions including WebEx room URL, phone/email/text preferences, etc. (-remove brackets)]

### About Your Instructor

[Add a short message introducing yourself to the class (may include welcome video by instructor-remove brackets).]

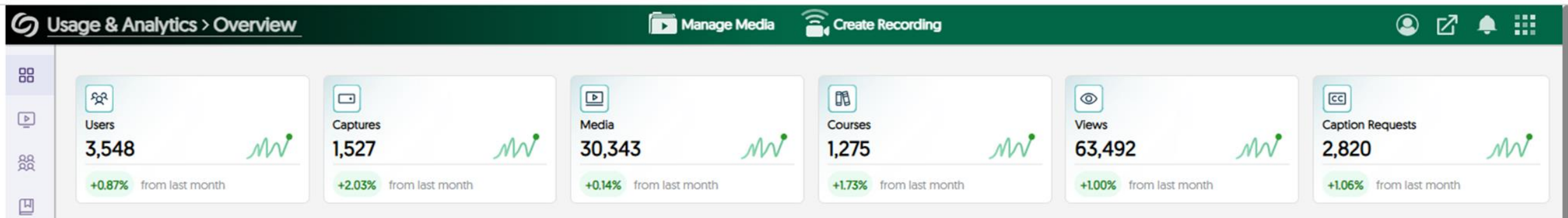
# Resources for Faculty

- Created/updated over 150 pages of information& instructions (Canvas/YuJa) for faculty and created more than 25 Canvas videos.
- Courses are developed to focus on identified needs and be available for faculty 24/7 as resources when needed.
  - [CCC Canvas Guides for Faculty](#)
  - [Designing & Teaching for Impact](#)
  - [Early College Adjunct Resource Course](#)

# For students:

- Updated the [CCC 101](#) course with over 100 pages of new & updated information & instructions for students.
- Created more than 25 "how to" videos for students.
  - Examples posted on college website:  
<https://www.cccneb.edu/ccclms>
  - Canvas Navigation Guides for Students are [available on the College website](#)

YuJa transition from another service:  
305 faculty & staff, and 3,227 student users in YuJa





# Instructional Perspectives

Dr. Amy Mancini

Dean of Instruction

Arts, Science, and Business



1:46

# Instructional Perspectives

Chadric Devin Harms  
Visual Arts and  
Education Instructor  
Columbus



2:34

# Instructional Perspectives

Erin Lesiak

Psychology Instructor  
Grand Island



1:46

# Instructional Perspectives

Venus King

Business Instructor

Grand Island

2:14



# Instructional Perspectives

I am so grateful to both LSS and FRC staff for the expertise they offer to me as an instructor. The important work that these folks do to help the faculty improve their courses often goes unheralded. I glean much from the individual appointments set with LSS and/or FRC staff. If I am having a technological issue or a specific problem in Canvas that I simply cannot figure out on my own, they are so good about helping me! I am so appreciative of them as colleagues and for the services they offer to the faculty!

**Jeff Schultz**

Sociology & Gerontology Instructor  
Grand Island



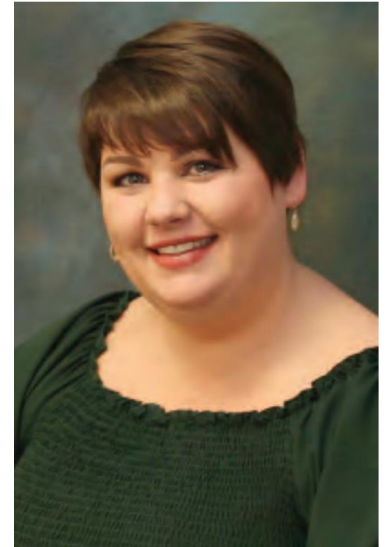
# Instructional Perspectives

I've attended FRC sessions introducing new technology tools like Padlet and Wakelet. These tools have been integrated into my courses, enhancing student engagement, and providing substantive interactions and learning. I have worked with FRC on course rewrites, and I believe these efforts have strengthened our program and increased academic rigor. I feel that these improvements help prepare our students for the workforce or further education.

LSS supports from the beginning of your time at CCC. Their responsiveness is incredible and their willingness to assist is bar none. LSS has helped me troubleshoot more times than I'd like to admit, and they've helped me resolve numerous issues, particularly with Canvas.

Their support has built my confidence in using technology effectively in my teaching.

**Taylor Brase**  
Early Childhood Program Director  
Area Wide





# Instructional Perspectives

I couldn't be more thankful for the amazing team we have to support faculty when we are in crisis or just in need of a cleaning house of our old curriculum and templates in the LMS.

This resource and their technical expertise and willingness to jump in at a moment's notice makes a drastic impact on the lives of all faculty at CCC. Their knowledge and dedication to show faculty how we can better our LMS site allows me to help others with things I learn and they may need assistance in. I truly appreciate having this resource to lean on as I prepare for each upcoming semester.

I truly appreciate their dedication to supporting teachers like myself as we navigate new technologies and ever-changing updates. Their work makes a significant impact on our ability to provide quality education.

**Amy Stuart**

Drafting and Design Instructor  
Grand Island



**Thank you!**