

DWG: F:\Projects\2022\20220128\Landplanning\Exhibit\2022-0128MR ROW VACATION.dwg
DATE: Oct 13, 2023 3:45pm
USER: jll
XREFS:

IRIS STREET

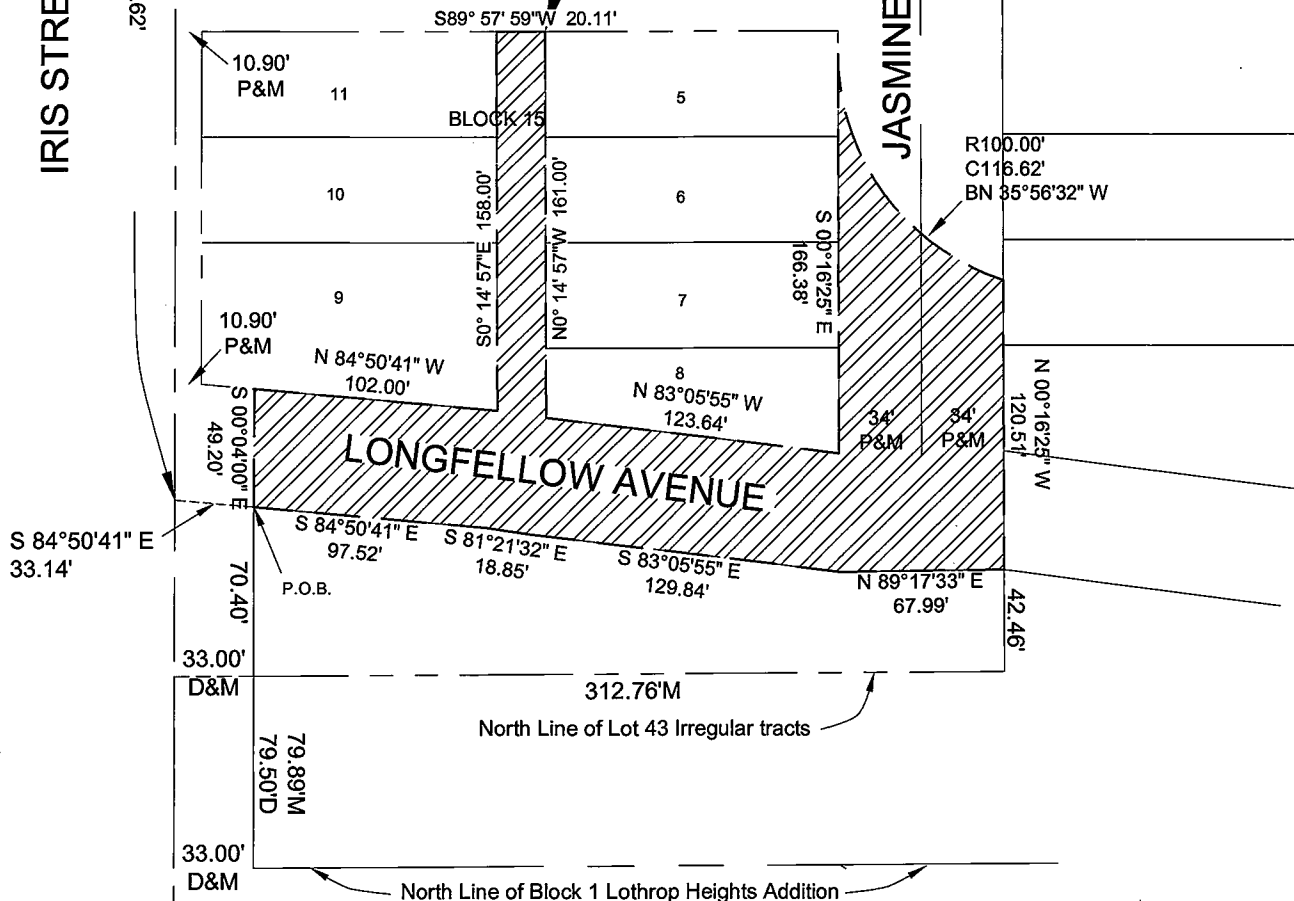
S 00°04'00" E 825.79' 219.62'

NW Corner
NE 1/4 Sec 35-8-4E

LIMITS OF
RIGHT-OF-WAY
VACATION

JASMINE ROAD

SCALE: 1"=80'



drawn by: jds
checked by: -
project no.: 2022-0128
date: 10/13/2023

RIGHT-OF-WAY VACATION EXHIBIT BURLINGTON ESTATES CRETE, NEBRASKA



Civil Design Group, Inc.
8535 EXECUTIVE WOODS, DR., SUITE 200
Lincoln, Nebraska 68512
Ph. 402-434-8494 Fax 866-215-8747
www.civildg.com

CONSULTING ENGINEERS • LAND USE PLANNERS
CIVIL DESIGN • SITE DEVELOPMENT • PLANNING AND ZONING

EXHIBIT

1
OF
2

BURLINGTON ESTATES
VACATION OF RIGHT-OF-WAY

A legal description of a part of a part of the Northeast Quarter of Section 35, Township 8 North, Range 4 East, of the 6th P.M., Crete, Saline County, Nebraska and more particularly described as follows:

Referring to the Northwest Corner of the Northeast Quarter of Section 35; Thence South, on the West Line of the Northeast Quarter on an assumed bearing of S 00°04'00" E for a distance of 825.79' to a point of intersection with the South Line of Longfellow Avenue; Thence S 84°50'41" E, on the South Line of Longfellow Avenue for a distance of 33.14' to a point on the East 33' Right-of-way Line of Iris Street, said point being the **Point of Beginning**:

Thence continuing on the Southerly Line of Longfellow Avenue the following 4 courses:
S 84°50'41" E for a distance of 97.52';
Thence S 81°21'32" E for a distance of 18.85';
Thence S 83°05'55" E for a distance of 129.84';
Thence N 89°17'33" E for a distance of 67.99' to a point of intersection with the East Line of Jasmine Road extended South;
Thence N 00°16'25" W, on the East Line of Jasmine Road extended South, and on the East Line of Jasmine Road, for a distance of 120.51';
Thence with a curve turning to the right with an arc length of 124.51', with a radius of 100.00', with a chord bearing of N 35°56'32" W, with a chord distance of 116.62' to a point on the West Line of Jasmine Road; Thence S 00°16'25" E, on the West Line of Jasmine Road, for a distance of 166.38' to a point of intersection with the North Line of Longfellow Avenue; Thence N 83°05'55" W, on the North Line of Longfellow Avenue, for a distance of 123.64' to the Southwest Corner of Lot 8, Block 15 "College Park"; Thence N 00°14'57" W, on the West Line of Lots 8-5, Block 15 "College Park", for a distance of 161.00' to the Northwest Corner of Lot 5, Block 15 "College Park"; Thence S 89°57'59" W for a distance of 20.11' to the Northeast Corner of Lot 11, Block 15 "College Park"; Thence S 00°14'57" E, on the East Line of Lots 11-9, Block 15 "College Park", for a distance of 158.00', to the Southeast Corner of Lot 9, Block 15 "College Park", said point being on the North Line of Longfellow Avenue; Thence N 84°50'41" W, on the North Line of Longfellow Avenue, for a distance of 102.00' to a point on the East 33' Right-of-way Line of Iris Street; Thence S 00°04'00" E, on the East 33' Right-of-way Line of Iris Street, for a distance of 49.20' to the **Point of Beginning**, and having a calculated area of 0.58 Acres or 25210 Square Feet more or less.

Subject to any and all easements and restrictions of record.