



2023/24

MEMBERSHIP PACKET

WHY JOIN SEND DD?

Housing

Broadband

Global Perspectives

Regional Values

Connector

Contracting

Grant Assistance

Disaster Recovery

Loans

Local Impacts

Community Development

Economic Development

LETTER FROM THE EXECUTIVE DIRECTOR

The Southeast Nebraska Development District (SEND) Board and staff would like to thank you for your continued support. Your membership is critical to the organization's success. SEND is your regional community and economic development organization, and we work hard to improve services and programs.

Each year, SEND staff hear from rural residents about lack of access to broadband. In 2020, we took on this challenge beginning with a statewide crowdsourced mapping tool that documented actual vs. advertised broadband speeds. The following year, SEND hired two Lead for America (LFA) Broadband Fellows who worked exclusively on internet issues. During this time, the Fellows met with county officials, key stakeholders, community members, and state officials to develop investment plans for broadband implementation, and this past year, the dividends showed (see below).

SEND will continue serving you, and we look forward to making an impact across the region by growing our regional economy, identifying new opportunities, and building local wealth. Above all, we will continue to listen. For up-to-date information on grant programs, community and legislative updates, and news alerts, please go to our website at www.sendd.org, sign up for our e-newsletter, or "Like" our Facebook page.

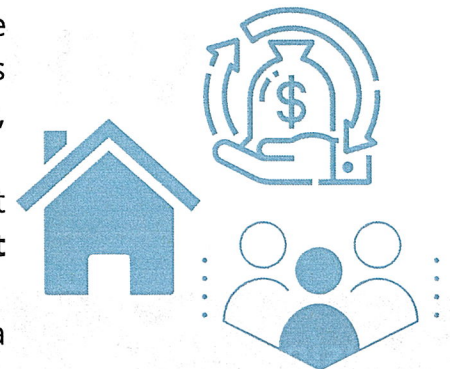
Once again, thank you for your support, and know that SEND staff are here to help. As always, I want to extend an open invitation to all members: please, visit the SEND offices where you are in Auburn or Lincoln, or call and schedule a time for us to attend your city council or county supervisor meetings. To better serve you now and in the future, I encourage you to call our staff with your ideas, suggestions, and thoughts. We look forward to your next visit.

Sincerely,


Tom Bliss, Executive Director

RETURN ON INVESTMENT - BROADBAND FOCUSED

- In July 2022, SEND's Broadband Fellows and staff worked with the State of Nebraska to secure a **\$600,000 grant** to expand digital access to underserved populations, including veterans, rural families, students, and seniors, while providing digital literacy instructions.
- SEND worked with Gage County to write a Request for Proposal that resulted in a **\$13 million broadband project that will connect around 1,000 homes and create 13 new jobs.**
- In April 2023, SEND received a **\$500,000 federal grant** to assist area residents with enrolling in the Affordable Connectivity Program (ACP)
- SEND Broadband Fellows partnered with Nebraska Public Power District (NPPD) - this partnership led to an outcome of over **100,000 availability and location challenges and played a major role in the State receiving an additional \$200 million in broadband funding (Total \$405 million).**



MEMBERSHIP

 MEMBER BENEFITS	FULL PAYING DUES	GENERAL NON PAYING DUES
Monthly Newsletter	X	X
Special notices regarding programs of interest	X	X
Unlimited visits to discuss requirements of specific programs	X	
Limited visits to discuss requirements of specific programs		X
Assistance with grant and loan applications, generally at no additional cost	X	
Special studies associated with grant and loan applications	X	
Census data and special reports maintained by SENDD	X	
Labor/Workforce data maintained by SENDD	X	
Staff consultation on specific employment generating projects	X	
Access to the Regional SENDD Economic Development Lite Program	X	
Assistance with grant and loan applications - charged at a non-member rate with a fee-for-service contract required		X
Access to training/educational workshops at no additional cost	X	
Access to training/educational workshops with a registration fee required		X

HOUSING

Is your community or county facing challenges associated with outdated or insufficient housing availability? SENDD is proud to offer a wide range of opportunities aimed to help update and grow your local housing stock! By paying our annual Housing Dues, you help to fund our ability to write grants and develop housing opportunities in your area. Housing dues are based on population size.

SENDD has been a regional leader in affordable housing development since its founding in the late 1970s. Today, SENDD housing staff continues to expand as more and more counties and communities receive funding in our area. We currently have **SEVEN members** on our Housing Team that are qualified and well trained to bring much needed housing programs to your communities.

By paying SENDD's housing dues, you have the potential to receive an **800:1 dollar return on your investment, as many of our housing grants range from \$350,000 to over \$600,000**. To date, SENDD has assisted **over 25 communities** implement successful housing programs.

Please contact Jim Warrelmann at jwarrelmann@sendd.org for additional information about housing or to schedule a meeting.

VOLUNTARY HOUSING DUES

Dues cover costs specifically associated with housing, including:

- Training for staff members in housing grant application development
- Training on changing regulations related to Federal/State funding for housing programs
- State certifications involving lead-based paint and clearance testing
- Assistance to member communities with applications to partially underwrite the cost of housing needs studies; assistance to communities and private developers with packaging grant and loan applications
- Ongoing expenses related to housing projects after the project is closed

TYPES OF HOUSING PROGRAMS

- Rehabilitation programs for income-qualified owner-occupied residential units
- Down-payment assistance programs to aid income-qualified first-time homebuyers
- Purchase/Rehab/Resale programs which may be coupled with down-payment assistance
- Construction of rent-to-own, single-family residential units
- Financial packaging assistance to developers of single and multi-family residential units for income-qualified occupants



MEMBERSHIP SERVICES



Housing & Contracting

- Owner Occupied Rehabilitation
- Purchase Rehab Resale
- Down Payment Assistance Loans
- Housing Quality Standards Inspections
- New Construction Services
- Housing Condition Studies
- Lead-Based Paint Inspections
- USDA Loan Packaging
- General Contracting Services
- Rural Workforce Housing



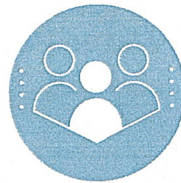
Economic Development

- Revolving Loan Funds
- GIS Mapping/Location Intelligence
- Support businesses and communities with analytical decision making
- Market reports/analysis
- Technical Assistance for Business Startups and Expansions
- Economic Development & Leadership Certified Community
- Economic Development Curriculum & Toolkit



Emergency & Disaster Relief

- Review Disaster Recovery Plans
- Assess infrastructure, vulnerabilities, and needs of communities impacted by disaster
- Regional Recovery Guide
 - Community and Business Resiliency and Recovery Resources
- Flood and Floodplain Management
- Assist communities to meet National Flood Insurance Program (NFIP) guidelines
 - Potential insurance premium discount for Community Rating System



Community Development

- Grant Writing and Administration
 - Community Development Block Grant (Downtown Revitalization, Economic Development, Planning, Public Works, Tourism, Youth Job Training)
 - Community & Civic Center Financing Fund
 - Land & Water Conservation Fund
- Household Income Studies
- Community Needs Assessment
- Workforce Availability Studies
- Project Specific Environmental Review
- Strategic Planning
- Broadband Assistance

SENDD members can take advantage of our wide variety of services. We are continually looking for additional ways to better serve our member communities.

ALTERNATIVE RESOURCES

CENTER FOR RURAL AFFAIRS

Small Business | Recovery | Express | REAP - Direct, Gap, Invoice, Guarantees

ECONOMIC DEVELOPMENT ADMINISTRATION

Infrastructure | Economic Adjustment | Build to Scale | Job Growth

NEBRASKA DEPARTMENT OF ECONOMIC DEVELOPMENT

Rehabilitation | Infrastructure | Tourism | Revitalization | Community Facilities | Planning

NEBRASKA BUSINESS DEVELOPMENT CENTER

Business Technical Assistance | SBA Assistance | Business Planning

NEBRASKA DEPARTMENT OF ENVIRONMENT & ENERGY

Waste & Recycling | Brownfields | Water | Deconstruction | Weatherization

NEBRASKA ENTERPRISE FUND

Direct | GAP | Invoice | Loan Guarantees | Intermediary Lending

ENVIRONMENTAL PROTECTION AGENCY

Brownfields | Local Foods Local Places | Air Quality

NEBRASKA GAME & PARKS

Land & Water | Recreational Trails

USDA - RURAL DEVELOPMENT

Business & Industry | Energy | Value Added Producer | Housing | Community Facilities

***This list indicates some of SENDD's most used resources, but is not a comprehensive list. We regularly research additional funding opportunities from a variety of resources.**

Southeast Nebraska Development District

7407 O St
Lincoln, NE 68510-2444 US
402-475-2560
astutzman@senndd.org
www.senndd.org

INVOICE

BILL TO
City of Crete
PO Box 86
Crete, NE 68333-0086

INVOICE 2324-151-1
DATE 07/01/2023
TERMS Quarterly
DUE DATE 10/29/2023

DATE	ACTIVITY	DESCRIPTION	QTY	RATE	AMOUNT
07/01/2023	Dues (Membership)		1	4,500.00	4,500.00
07/01/2023	Dues (Housing)		1	2,130.00	2,130.00

Membership totals based on population data from the 2020 US
Census. Source data can be provided upon request.

BALANCE DUE

\$6,630.00

*For Comm. & Council
To*



ESOS 7-811A