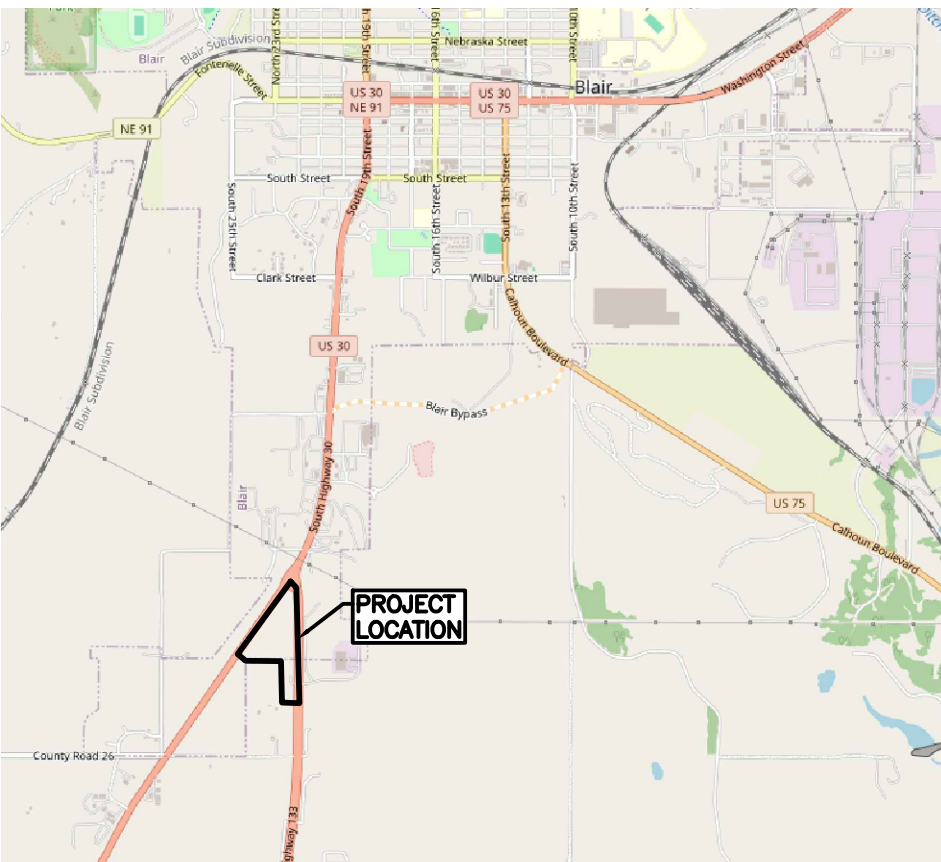


PAVING PUBLIC IMPROVEMENTS  
BLAIR, NEBRASKA  
(BLAIR CROSSING)

APPROXIMATE QUANTITIES

ITEM NO.	BID ITEM DESCRIPTION	APPROXIMATE QUANTITY		FINAL QUANTITY	
1.	CLEARING AND GRUBBING GENERAL	1	LS		LS
2.	REMOVE GRAVEL DRIVEWAY	840	SY		SY
3.	REMOVE FENCE	355	LF		LF
4.	STRIP STOCKPILE, AND RESPREAD TOPSOIL – ESTABLISHED QUANTITY (2,150 CY X 2)	4,300	CY		CY
5.	EARTHWORK EXCAVATION – ESTABLISHED QUANTITY	21,100	CY		CY
6.	GENERAL GRADING AND SHAPING	1	LS		LS
7.	EXPLORATORY EXCAVATION	10	HR		HR
8.	CONSTRUCT 7" CONCRETE PAVEMENT	5,292	SY		SY
9.	COMMON EARTH EXCAVATION	1,764	CY		CY
10.	CONSTRUCT 6" AGGREGATE DRIVEWAY	1,275	CY		CY
11.	CONSTRUCT 18" RCP, CLASS III	105	LF		LF
12.	CONSTRUCT 24" RCP, CLASS III	205	LF		LF
13.	CONSTRUCT 18" PIPE BEDDING	105	LF		LF
14.	CONSTRUCT 24" PIPE BEDDING	205	LF		LF
15.	CONSTRUCT 18" RC FLARED END SECTION	1	EA		EA
16.	CONSTRUCT 24" RC FLARED END SECTION	1	EA		EA
17.	CONSTRUCT TYPE A RIP-RAP APRON	40	TN		TN
18.	CONSTRUCT CURB INLET – TYPE I	2	EA		EA
19.	CONSTRUCT CURB INLET – TYPE III	4	EA		EA
20.	CONSTRUCT THICKENED EDGE	75	LF		LF
21.	DRILL AND EPOXY, EPOXY COATED NO. 5 X 18" TIE BARS AT 36" CENTERS	17	EA		EA
22.	CONSTRUCT END OF STREET BARRICADE	1	EA		EA
23.	CONSTRUCT SILT FENCE	3,500	LF		LF
24.	CLEANOUT SILT FENCE	1,000	LF		LF
25.	REMOVE SILT FENCE	1,000	LF		LF
26.	SEEDING – TYPE "TEMPORARY MIX"	3	AC		AC
27.	HAY OR STRAW MULCH	3	AC		AC
28.	CONSTRUCT ROCK ACCESS ROAD	50	TN		TN
29.	PERFORM CCTV PIPELINE INSPECTION – STORM SEWER	310	LF		LF
30.	DISCOVERY ALLOWANCE	1	LS		LS



LOCATION MAP

GENERAL NOTES

1. ANTICIPATED START DATE: FALL 2025.
2. THE TIME LIMIT TO COMPLETE ALL WORK SHALL BE 30 WORKING DAYS.
3. ALL SITE WORK SHALL BE IN ACCORDANCE WITH THE CITY OF OMAHA "STANDARD SPECIFICATIONS FOR PUBLIC WORKS CONSTRUCTION", 2024 EDITION AND ANY REVISIONS OR AMENDMENTS THERETO SHALL APPLY TO THIS PROJECT. EXCEPT AS MODIFIED BY THESE SPECIFICATIONS, SPECIAL CONDITIONS, AND/OR THE CONSTRUCTION DRAWINGS.
4. ALL PROJECT PROCEDURES, BONDS, AND RESERVES SHALL CONFORM TO THE SPECIFICATIONS OF THE CITY OF OMAHA.
5. THE CONTRACTOR SHALL NOTIFY ALL UTILITY COMPANIES 48 HOURS BEFORE WORK IS STARTED TO VERIFY UTILITY LOCATIONS (ONE CALL 344-3565).
6. THE ENGINEER/INSPECTOR MUST NOTIFY THE FOLLOWING CITY OF BLAIR ENGINEER 48 HOURS PRIOR TO ALL PRECONSTRUCTION MEETINGS AND 48 HOURS PRIOR TO THE START OF ANY CONSTRUCTION: C.J. HEATON (PHONE: 402-426-6695).
7. THE ENGINEER SHALL NOTIFY THE CITY OF BLAIR ENGINEER 48 HOURS BEFORE THE PROJECT KICK-OFF MEETING. (C.J. HEATON 402-426-6695)
8. THE ENGINEER/INSPECTOR MUST SUBMIT WEEKLY PROGRESS REPORTS TO THE FOLLOWING CITY OF BLAIR ENGINEER NO LATER THAN THE FOLLOWING WEEK ENDING DATE: C.J. HEATON (PHONE: 402-426-6695).
9. THE ENGINEER/INSPECTOR MUST NOTIFY THE FOLLOWING CITY OF BLAIR ENGINEER 48 HOURS PRIOR TO LANE CLOSURE AND 24 HOURS PRIOR TO LANE RESTRICTIONS: C.J. HEATON (PHONE: 402-426-6695).
10. THE CONTRACTOR SHALL NOTIFY THE OFFICE OF THE CITY OF BLAIR ENGINEER 48 HOURS BEFORE WORK IS STARTED IN THE COUNTY ROAD RIGHT-OF-WAY.
11. THE CONTRACTOR SHALL NOTIFY THE CORPS OF ENGINEERS 48 HOURS PRIOR TO THE START OF CONSTRUCTION OPERATIONS ON CORPS OF ENGINEER PROPERTY.
12. THE CONTRACTOR SHALL NOT PERFORM ANY WORK WITHIN THE COUNTY RIGHT OF WAY OR THE NDOR RIGHT OF WAY UNTIL OWNER HAS OBTAINED A PERMIT.
13. THE CONTRACTOR IS REFERRED TO THE SPECIAL CONDITIONS OF THE SPECIFICATIONS FOR FURTHER INFORMATION.
14. BARRICADES SHALL CONFORM TO OMAHA PUBLIC WORKS "BARRICADING STANDARDS SPECIFICATIONS, METHODS AND MATERIALS" AND/OR THE "MANUAL ON UNIFORM TRAFFIC CONTROL DEVICES".
15. NO TREES SHALL BE REMOVED WITHOUT APPROVAL OF THE ENGINEER. TREES SHALL BE REMOVED ONLY WHERE TREES INTERFERE WITH THE CONSTRUCTION OF THE SEWER.
16. THE PROJECT MAY REQUIRE THE DISTURBANCE OF EXISTING DRAINAGE AND EROSION CONTROL MEASURES. THESE ITEMS MAY INCLUDE SILT BASINS, LEVEL TERRACES, INTERCEPTOR SWALES, SILT FENCE AND ROCK CONSTRUCTION ENTRANCES. THE CONTRACTOR SHALL MAKE HIMSELF AWARE OF THE EXISTING SITE CONDITIONS PRIOR TO BIDDING THIS WORK. THE FUNCTION OF THESE ITEMS MUST BE MAINTAINED THROUGHOUT CONSTRUCTION WITH EMPHASIS PLACED ON RESTORING THEIR INTEGRITY PRIOR TO ANY RAINFALL EVENT. AS PART OF THIS CONTRACT, ALL DISTURBED DRAINAGE AND EROSION CONTROL MEASURES SHALL BE MAINTAINED IN GOOD WORKING ORDER AND SHALL BE RESTORED TO GOOD CONDITION AFTER COMPLETION OF THE WORK OR AS DIRECTED BY THE ENGINEER.
17. THESE PLANS HAVE BEEN PREPARED IN COMPLIANCE WITH THE REQUIREMENTS CONTAINED IN THE NPDES GRADING PERMIT NUMBER CSW-202509368.
18. THE LOCATIONS OF ALL AERIAL AND UNDERGROUND UTILITY FACILITIES MAY NOT BE INDICATED IN THESE PLANS. EXISTING UTILITIES ARE SHOWN AS A CONVENIENCE FOR THE CONTRACTOR. UNDERGROUND UTILITIES, WHETHER INDICATED OR NOT, WILL BE LOCATED AND FLAGGED BY THE UTILITY COMPANIES AT THE CONTRACTOR'S REQUEST. THE CONTRACTOR SHALL NOTIFY ALL UTILITY COMPANIES 48 HOURS BEFORE WORK IS STARTED TO VERIFY UTILITY LOCATIONS (ONE CALL 344-3565). NO EXCAVATION WILL BE PERMITTED IN THE AREA OF THE UNDERGROUND UTILITIES UNTIL ALL FACILITIES HAVE BEEN LOCATED AND IDENTIFIED TO THE SATISFACTION OF ALL PARTIES AND THEN ONLY WITH EXTREME CARE TO AVOID ANY POSSIBILITY OF DAMAGES TO THE FACILITIES. SEE SECTION 4.04 OF THE GENERAL CONDITIONS FOR FURTHER INFORMATION.
19. ELEVATIONS ARE REFERENCED TO N.A.V.D. 1988.
20. THE CONTRACTOR SHALL PROVIDE THE ENGINEER WITH A "CONSTRUCTION RECORD" SET OF DRAWINGS SHOWING TIES AND DEPTHS STUBOUTS, BENDS AND FITTINGS.
21. THE CONTRACTOR SHALL NOTIFY THE ENGINEER/OWNER/ARCHITECT A MINIMUM OF 48 HOURS PRIOR INSTALLATION OF ALL BMPs. THE CONTRACTOR SHALL BE RESPONSIBLE FOR ANY AND ALL ADDITIONAL WORK THAT MAY BE NEEDED TO EXPOSE, RE-INSTALL OR OTHER MEANS NECESSARY FOR BMP CERTIFICATION DUE TO FAILURE TO NOTIFY THE ENGINEER/OWNER.

INDEX OF SHEETS

SHEET NUMBER	SHEET DESCRIPTION	ORIGINAL DATE	REVISION DATE
1	COVER SHEET	04-18-2025	
2	LEGEND SHEET	04-18-2025	
3	ORIGINAL TOPOGRAPHIC SURVEY (FOR INFORMATIONAL PURPOSES ONLY)	04-18-2025	
4	ORIGINAL STORM WATER POLLUTION PREVENTION PLAN (FOR INFORMATIONAL PURPOSES ONLY)	04-18-2025	
5	REMOVAL AND GRADING PLAN	04-18-2025	
6	PAVING VICINITY MAP	04-18-2025	
7	PAVING NOTES AND DETAILS	04-18-2025	
8	PAVING PLAN AND PROFILE [ST01] HONEY B LANE	04-18-2025	
9	PAVING PLAN AND PROFILE [ST01] HONEY B LANE [CONT]	04-18-2025	
10	DRIVEWAY PLAN AND PROFILE	04-18-2025	
11	STORM SEWER PLAN AND PROFILE [STM PUBLIC-1] HONEY B LANE AND [STM PUBLIC-2] HONEY B LANE	04-18-2025	

LAMP  
RYNEARSON

LAMP RYNEARSON.COM  
OMAHA, NEBRASKA  
14170 W. DODGE RD. STE. 100 (402) 496-2498  
NE AUTHORIZATION NO.: CA0150  
FORT COLLINS, COLORADO  
4715 INNOVATION DR., STE. 100 (970) 228-0342  
KANSAS CITY, MISSOURI  
8001 STATE LINE RD., STE. 200 (816) 361-0440  
MO AUTH. NO.: E-2013011903 | LS-2019043127



U:\Engineering\0124083 Blair Authority\Drawings\CONSTRUCTION DRAWINGS\PUBLIC IMPROVEMENT - PAVING\0124083-PAV-COR-H-UGD.dwg, 4/10/2025, 3:40:00 PM, RICK J. KELLER, LAMP RYNARSON

EXISTING					
AIR		SANITARY CLEAN OUT		WATER WARNING SIGN	
BUILDING OVERHANG		SANITARY MANHOLE		AUTO SPRINKLER BUILDING	
CABLE		SEWER WARNING SIGN		FIRE HYDRANT	
CONDUIT		SEPTIC TANK		POST INDICATOR VALVE	
CONSTRUCTION FENCE		AREA INLET ROUND		YARD HYDRANT	
CREEK FLOW LINE		AREA INLET SQUARE		IRRIGATION CONTROL VALVE	
CREEK FLOW DIRECTION		GRATE INLET		IRRIGATION SPRINKLER HEAD	
DRAIN TILES		GRATE INLET W/ HOOD		WELL	
ELECTRIC		STORM MANHOLE		MONITORING WELL	
EFF LINE		STORM PIPE END		TABLE	
FENCE		4' CURB INLET		SATELLITE DISH	
FENCE - BARBED WIRE		CURB INLET LEFT		MAILBOX	
FENCE - STEEL		CURB INLET RIGHT		MISCELLANEOUS POINT	
FENCE - WIRE		DOWN SPOUT/ROOF DRAIN		VENT	
FENCE - WOOD		FLARED END SECTION		TOWER	
FIBER OPTICS		CONTINUE SYMBOL		PROPANE TANK	
FLOOD PLAN		CABLE MANHOLE		FLAGPOLE	
FLOW ARROW		CABLE PEDESTAL		AIR CONDITIONING UNIT	
FLOW LINE		CABLE PULLBOX		DRINKING FOUNTAIN	
FORCE MAIN		LIGHT POLE		BBQ PIT	
GAS		YARD LIGHT		BENCH	
GRAVEL AND DIRT EDGE		GROUND LIGHT		BOLLARD	
GUARD RAIL		BLDG MOUNTED LIGHT		BORE HOLE	
IRRIGATION		STREET LIGHT		COLUMN ROUND	
MAIN DRAIN LINE		POWER POLE		COLUMN SQUARE	
NON POTABLE WATER		H STRUCTURE		VACUUM	
OIL		H STRUCTURE W/ TRANSFORMER		TREE DECIDUOUS	
OIL AND GAS		ELECTRIC MANHOLE		TREE CONIFEROUS	
OVERHEAD POWER		ELECTRIC METER		BUSH	
OVERHEAD TELEPHONE		ELECTRIC PEDESTAL		BOULDER	
OVERHEAD UTILITY		ELECTRIC PULLBOX		ARROW LEFT	
POWER		ELECTRIC TRANSFORMER		ARROW RIGHT	
RAILROAD TRACKS		ELECTRIC VAULT		ARROW STRAIGHT	
RAW WATER		ELECTRIC WARNING SIGN		STRIPING "ONLY"	
RECIRCULATION		FIBER OPTIC MANHOLE		BICYCLE STRIPING	
ROOF DRAIN		FIBER OPTIC PULL BOX		HANDICAP SYMBOL	
SANITARY SEWER		FIBER OPTIC VAULT		TRAFFIC SIGNAL	
STORM SEWER		FIBER OPTIC PEDESTAL		TRAFFIC SIGNAL PEDESTAL	
STREAM		FIBER OPTIC WARNING SIGN		TRAFFIC SIGNAL PULL BOX	
TELEPHONE		FUEL TANK		PARKING METER	
UNDER DRAIN		FUEL CAP		SIGN	
UNIDENTIFIED UTILITY		FUEL PUMP		STOP SIGN	
UTILITY		GAS CURB STOP		YIELD SIGN	
VEGETATION LINE		GAS MANHOLE		RR CROSSING ARM	
WATER		GAS METER		BENCHMARK	
WATERS EDGE		GAS VALVE		TEMPORARY BENCHMARK	
RECORD		TELEPHONE MANHOLE		ROW MARKER	
AIR		TELEPHONE PEDESTAL		CONTROL POINT	
CABLE		TELEPHONE PULLBOX		MONUMENT FOUND	
ELECTRIC		TELEPHONE WARNING SIGN		MONUMENT SET	
FIBER OPTIC		UNIDENTIFIED MANHOLE		WITNESS CORNER	
GAS		UNIDENTIFIED PEDESTAL		COMPUTED CORNER	
SANITARY SEWER		UNIDENTIFIED VALVE		SECTION CORNER TIE	
STORM SEWER		UNIDENTIFIED PULLBOX		SECTION CORNER	
TELEPHONE		WATER CURB STOP			
UNDERGROUND POWER		WATER MANHOLE			
UTILITY		WATER METER			
WATER		WATER VALVE			

UTILITY	
AIR	
CABLE	
CONDUIT	
CONSTRUCTION FENCE	
DRAIN TILES	
FENCE	
FENCE - BARBED WIRE	
FENCE - STEEL	
FENCE - WIRE	
FENCE - WOOD	
FIBER OPTICS	
FLOW ARROW	
FORCE MAIN [SINGLE LINE]	
FORCE MAIN [DOUBLE LINE]	
GAS	
GRAVEL AND DIRT EDGE	
IRRIGATION	
LIMITS OF CONSTRUCTION	
NON POTABLE WATER	
OIL	
OIL AND GAS	
POWER	
RAW WATER	
ROOF DRAIN	
SANITARY SEWER [SINGLE LINE]	
SANITARY SEWER [DOUBLE LINE]	
SANITARY SEWER SERVICE	
SANITARY SERVICE RISER	
STORM SEWER [SINGLE LINE]	
STORM SEWER [DOUBLE LINE]	
TELEPHONE	
UNDER DRAIN	
UTILITY	
WATER [SINGLE LINE]	
WATER [DOUBLE LINE]	
DROP MANHOLE	
SLOTTED UNDER DRAIN	
WATER	
AIR TAP	
FIRE HYDRANT	
TEE	
BEND	
REDUCER	
VALVE GATE	
MANHOLE	
FLARED END SECTION	
CURB INLET	
AREA INLET	
GRATE INLET	
GRADING	
CONTOUR	
FUTURE CONTOUR	
EXISTING CONTOUR	
WETLANDS AREA NOT TO BE DISTURBED	
FILL AREA	
STABILIZED ACCESS ROAD	
VEGETATED BUFFER STRIP	
SPOT ELEVATION	
LIMITS OF DISTURBED AREA	
FLOOD PLAN	

PROPOSED DRAINAGE	
100 YEAR	
500 YEAR	
2 YEAR EGL	
5 YEAR EGL	
10 YEAR EGL	
100 YEAR EGL	
2 YEAR HGL	
5 YEAR HGL	
10 YEAR HGL	
100 YEAR HGL	
FLOOD WAY	
RIDGE	
FLOW PATH	
DRAINAGE AREA NAME	
DRAINAGE AREA RUNOFF COEFFICIENT	
DRAINAGE BASIN DELINEATION	
DRAINAGE SUB BASIN DELINEATION	
TIME OF CONCENTRATION DRAINAGE PATH	
EROSION CONTROL	
EARTH BERM	
EARTH DIVERSION	
EROSION CONTROL LOG	
FILL DIVERSION	
INTERCEPTOR DIKE	
INTERCEPTOR SWALE	
LEVEL SPREADER	
LEVEL TERRACE	
SEDIMENT CONTROL LOG	
SILT FENCE	
STRAW WATTLE	
TEMPORARY DITCH	
BIORETENTION GARDEN	
WATTLE	
VEHICLE TRACKING PAD	
TEMPORARY SEEDING	
STRAW HAY BALE	
SLOPE PROTECTION	
PERMANENT SEEDING	
INLET PROTECTION	
PAVEMENT	
PAVEMENT	
PCC CURB AND GUTTER	
RETAINING WALL	
X" PCC PAVEMENT	
ASPHALT PAVEMENT	
SIDEWALK PAVEMENT	
PAVING BARRICADE	
BUILDING	
PARKING STALL COUNT	
FLOW LINE	
JOINT A	
JOINT B	
JOINT D	
JOINT E	
JOINT F	
JOINT G	
JOINT H	
JOINT JLC-K	
JOINT JLH-S	

PLATTING	
PROPERTY/BOUNDARY LINE	
PROPOSED LOT LINE	
ADJACENT LOT LINE	
SECTION LINE	
EASEMENT	
MONUMENT SET	
MONUMENT FOUND	
SECTION CORNER	
COMPUTED CORNER	
WITNESS CORNER	

GENERAL ABBREVIATIONS			
ADA	AMERICANS WITH DISABILITIES ACT	(R)	RECORD DIMENSION
ASPH	ASPHALT	RB	REBAR
BC	BACK OF CURB	RCP	REINFORCED CONCRETE PIPE
BOSW	BACK OF WALK	ROW	RIGHT OF WAY
BP	BOTTOM OF PIPE	S	SOUTH
BW	BOTTOM OF WALL	SF	SQUARE FEET
(C)	COMPUTED DIMENSION	SS	SANITARY SEWER
CATV	CABLE TELEVISION	ST	STORM
CF	CUBIC FOOT	STA	STATION
CL	CENTERLINE	STD	STANDARD
CMP	CORRUGATED METAL PIPE	SW	SIDEWALK
CONC	CONCRETE	T	TELEPHONE
CP	CONTROL POINT	TC	TOP OF CURB
CPP	CORRUGATED PLASTIC PIPE	TOF	TOP OF FOUNDATION
CY	CUBIC YARD	TOG	TOP OF GRADE
DIA	DIAMETER	TOI	TOP OF ISLAND
DIP	DUCTILE IRON PIPE	TP	TOP OF PAVEMENT
E	EAST	TS	TOP OF SLAB
ELEV	ELEVATION	TW	TOP OF WALL
EOG	EDGE OF GRAVEL	TYP.	TYPICAL
FES	FLARED END SECTION	VERT	VERTICAL
FF	FINISH FLOOR ELEVATION	W	WEST
FG	FINISHED GRADE	WQCV	WATER QUALITY CAPTURE VOLUME
FH	FIRE HYDRANT	YPC	YELLOW PLASTIC CAP
FL	FLOWLINE	TP	TOP OF PAVEMENT
G	GUTTER	TS	TOP OF SLAB
GB	GRADE BREAK	TW	TOP OF WALL
HP/LP	HIGH POINT/LOW POINT	TYP.	TYPICAL
HORIZ	HORIZONTAL	VERT	VERTICAL
HPC	HORIZONTAL POINT OF CURVATURE		
HPI	HORIZONTAL POINT OF INTERSECTION		
HPT	HORIZONTAL POINT OF TANGENCY		
HPCC	HORIZONTAL POINT OF COMPOUND CURVATURE		
HPRC	HORIZONTAL POINT OF REVERSE CURVATURE		
IE	INVERT ELEVATION		
LF	LINEAR FEET		
(M)	MEASURED DIMENSION		
MH	MANHOLE		
ME	MATCH EXISTING		
N	NORTH		
N.T.S.	NOT TO SCALE		
OT	OPEN TOP PIPE		
(P)	PLAT DIMENSION		
PL	PROPERTY LINE		
PT	PINCHED TOP PIPE		
P.V.C.	POLYVINYL CHLORIDE		
PVC	POINT OF VERTICAL CURVE		
PVI	POINT OF VERTICAL INTERSECTION		
PVT	POINT OF VERTICAL TANGENCY		
X 1020.12	SPOT ELEVATION		

LAMP RYNEARSON

LAMP RYNEARSON.COM

OMAHA, NEBRASKA  
14710 W. DODGE RD., STE. 100 (402) 498-2498  
NE AUTHORIZATION NO.: CAD130

FORT COLLINS, COLORADO  
4718 INNOVATION DR., STE. 100 (970) 228-0342

KANSAS CITY, MISSOURI  
9001 STATE LINE RD., STE. 200 (816) 361-0440  
MO AUTH. NO.: E-2013011903 | LS-2015043127

LEGEND SHEET

811

ALL UTILITIES ARE SHOWN BASED ON THE INFORMATION AVAILABLE. THE ENGINEER THERE IS NO GUARANTEE ALL UTILITIES ARE SHOWN OR THAT THE LOCATION, DEPTH, AND SIZE OF EACH FACILITY IS CORRECT. THE CONTRACTOR IS RESPONSIBLE FOR LOCATING ALL UTILITIES AND SERVICE LINES PRIOR TO CONSTRUCTION.

Know what's below.  
Call before you dig.

REVISIONS

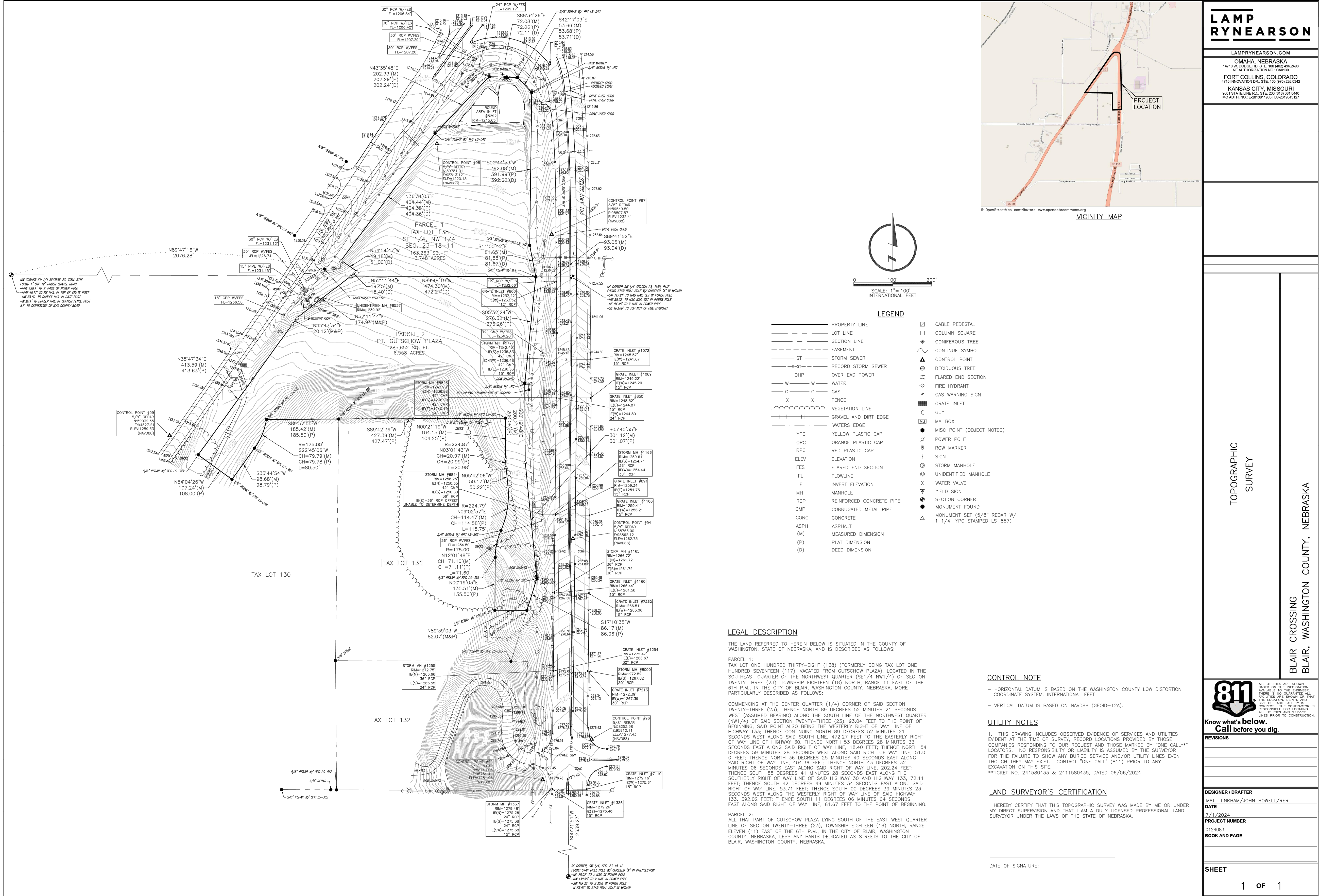
DESIGNER / DRAFTER  
R. KELLER  
DATE  
04-18-2025  
PROJECT NUMBER  
0124083.02-022/322  
BOOK AND PAGE

SHEET

2 OF 11



FOR INFORMATIONAL PURPOSES ONLY



LAMP RYNEARSON

LAMP RYNEARSON.COM

OMAHA, NEBRASKA  
14710 W. DODGE RD., STE. 100 (402) 496-2498  
NE AUTHORIZATION NO.: CA0130

FORT COLLINS, COLORADO  
4718 INNOVATION DR., STE. 100 (970) 226-0342

KANSAS CITY, MISSOURI  
8001 STATE LINE RD., STE. 200 (816) 361-0440  
MO AUTH. NO.: E-2013011903 (LS-2019043127)

AARON J. GROTE

E-13344

ORIGINAL TOPOGRAPHIC SURVEY  
(FOR INFORMATIONAL PURPOSES ONLY)

PAVING PUBLIC IMPROVEMENTS  
BLAIR, NEBRASKA

811

Know what's below.  
Call before you dig.

REVISIONS

DESIGNER / DRAFTER  
DATE  
PROJECT NUMBER  
BOOK AND PAGE

811

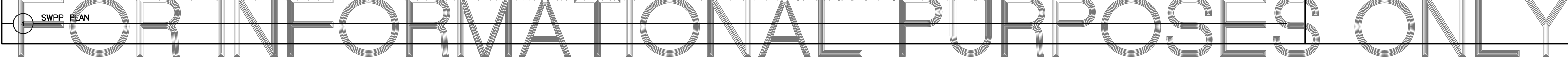
Know what's below.  
Call before you dig.

REVISIONS

DESIGNER / DRAFTER  
DATE  
PROJECT NUMBER  
BOOK AND PAGE

SHEET  
1 OF 1

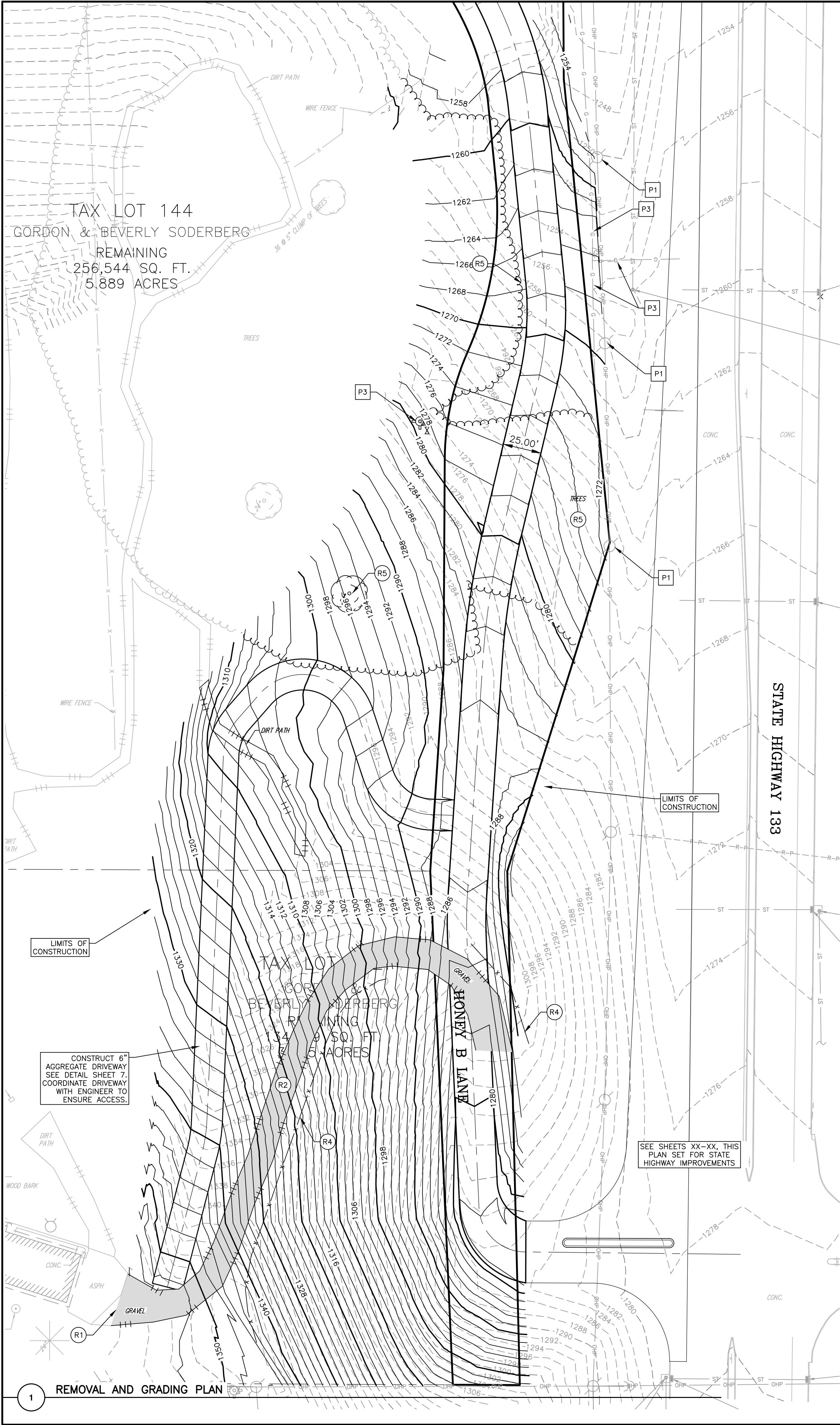




4 OF 11



U:\Engineering\0124083 Blair Rynearson\Drawings\CONSTRUCTION DRAWINGS\PUBLIC IMPROVEMENT - PAVING\0124083-020-PLAN PLAN.dwg, 4/11/2025 1:58:34 PM, AARON J. GROTE, LAMP RYNEARSON



#### REMOVAL NOTES

1. THE CONTRACTOR SHALL NOTIFY THE OWNER 72 HOURS IN ADVANCE IF EXISTING UTILITIES CONFLICT WITH NEW CONSTRUCTION OR IF TEMPORARY OUTAGES ARE ANTICIPATED, INCLUDING BUT NOT LIMITED TO WATER, GAS, POWER, CABLE TELEVISION AND TELEPHONE.
2. THE CONTRACTOR SHALL PROTECT ALL EXISTING UTILITIES AND SHALL BE RESPONSIBLE FOR ANY AND ALL DAMAGES TO UTILITIES THAT ARE PERMITTED TO REMAIN IN PLACE. DAMAGES DUE DIRECTLY OR INDIRECTLY TO THE CONTRACTOR'S OPERATIONS SHALL BE PROMPTLY REPAIRED TO THE SATISFACTION OF THE ENGINEER/ARCHITECT AND THE OWNER OF THE PROPERTY, OR SHALL MAKE PAYMENT TO SUCH OWNERS FOR REPAIRS AS MAY BECOME NECESSARY ON ACCOUNT OF DAMAGES THAT ARE DUE TO THEIR OPERATIONS.
3. THE CONTRACTOR SHALL MAKE THEMSELVES AWARE OF ALL OF THE PERMANENT AND TEMPORARY UTILITY APPURTENANCES IN THEIR PRESENT AND/OR RELOCATED POSITIONS. NO ADDITIONAL COMPENSATION WILL BE ALLOWED FOR ANY DELAYS, INCONVENIENCE, OR DAMAGE SUSTAINED DUE TO INTERFERENCE FROM THE SAID UTILITY APPURTENANCES OR THE OPERATION OF DISCONNECTING THEM, INCLUDING THE POSSIBILITY OF UNCOVERING UTILITIES THAT HAVE BEEN ABANDONED AND/OR ARE NOT INDICATED.
4. ALL DEMOLITION RUBBISH WILL BE REMOVED FROM THE SITE BY A LICENSED TRUCKING FIRM, IN COVERED TRUCKS, AND TAKEN TO A LICENSED LANDFILL. ALL THIS WILL BE PAID FOR BY THE CONTRACTOR AND WILL BE PART OF THE CONTRACTOR'S BASE BID.
5. COORDINATION WITH FIRE DEPARTMENTS AND UTILITY COMPANIES SHALL BE THE RESPONSIBILITY OF THE CONTRACTOR.
6. NO BURNING OF MATERIALS WILL BE PERMITTED.
7. THE OWNER SHALL BE GIVEN 5 BUSINESS DAYS NOTICE BEFORE ANY ENTRANCE OR ACCESS DRIVE CLOSURES.
8. THE LIMITS OF DEMOLITION SHOWN ON THE DRAWINGS ARE APPROXIMATE. THE EXACT LIMITS WILL BE MARKED IN THE FIELD BY THE ENGINEER/ARCHITECT.
9. CONTRACTOR SHALL FIRST COORDINATE REMOVAL OF ANY EXISTING UTILITY WITH UTILITY OWNER (GAS, WATER, POWER, ETC.). ALL TELEPHONES, WATER, ELECTRIC AND GAS METERS, AND ASSOCIATED EQUIPMENT SHALL REMAIN THE PROPERTY OF THE VARIOUS UTILITY COMPANIES.
10. EXISTING PAVEMENT SHALL BE SAW-CUT AT LOCATIONS INDICATED AS REQUIRED FOR PAVEMENT REMOVAL. THE SAW-CUT SHALL BE MADE TO THE FULL DEPTH OF THE PAVEMENT.
11. WHERE INDICATED THE EXISTING PAVEMENT SHALL BE REMOVED AND LEGALLY DISPOSED OF OFF THE PROJECT SITE. CONTRACTOR SHALL NOT USE A HEAVY BALL FOR BREAKING UP OF EXISTING PAVEMENT OVER PUBLIC WATER AND GAS MAINS.
12. TRENCH AND BASEMENT BACKFILL AND ANY SUBGRADE SOILS DISTURBED BY THE PAVEMENT REMOVAL PROCESS SHALL BE RECOMPACTED AS SPECIFIED IN THE COMPACTION REQUIREMENTS TABLE OR AS DIRECTED BY THE GEOTECHNICAL ENGINEER.
13. NO TREES SHALL BE REMOVED BETWEEN JUNE 1 AND JULY 31 IN ACCORDANCE WITH FISH AND WILDLIFE'S RULING ON THE PROTECTION OF THE ENDANGERED LONG-EARED BAT.
14. ANY TREES, BUSHES, OR OTHER VEGETATION WITH THE POTENTIAL TO BE NESTING HABITAT TO BE REMOVED DURING THE PRIMARY MIGRATORY BIRD NESTING SEASON (APRIL 1 THROUGH SEPTEMBER 1) REQUIRE A MIGRATORY BIRD SURVEY PRIOR TO REMOVAL. CONTRACTOR SHALL CONDUCT THE SURVEY AND THEIR OPERATIONS IN ACCORDANCE WITH THE RECOMMENDATIONS SET FORTH IN THE NEBRASKA DEPARTMENT OF TRANSPORTATION'S AVIAN PROTECTION PLAN. MIGRATORY BIRD SURVEYS SHALL BE PAID FOR BY THE CONTRACTOR AT NO ADDITIONAL COST TO THE OWNER. IF THE CONTRACTOR ELECTS TO REMOVE HABITAT DURING THE NESTING SEASON, THE CONTRACTOR SHALL PROVIDE A COPY OF THE COMPLETED BIRD SURVEY TO THE ENGINEER.

#### UTILITY CONTACTS

SANITARY SEWER:	CITY OF BLAIR SEWER PUBLIC WORKS	402-426-4191
	OPPD NATE GASKILL	531-226-5835 (OFFICE) 402-990-1801 (CELL)
POWER:	JEREMY CASON	531-226-5846 (OFFICE) 712-301-4228 (CELL)
	TELEPHONE:	CENTURY LINK BUSINESS MARKETS GROUP 800-777-9594
CABLE TV:	COX BUSINESS SERVICES	402-934-6000
WATER:	CONTRACTOR SERVICES MUD	402-504-7014
	GAS:	CONTRACTOR SERVICES MUD 402-504-7014

#### REMOVAL KEYNOTES

- R1 SAWCUT PAVEMENT, IF NECESSARY FOR REMOVAL.
- R2 REMOVE EXISTING GRAVEL DRIVEWAY. COORDINATE DRIVEWAY REMOVAL WITH ENGINEER TO ENSURE ACCESS.
- R4. REMOVE FENCE.
- R5. REMOVE TREES.

#### PROTECT KEYNOTES

- P1 PROTECT UTILITY POLE.
- P2 PROTECT WATER HYDRANT AND VALES.
- P3. PROTECT HYDRANT AND VALVES. ADJUST TO GRADE AS NECESSARY.

THIS WORK SHALL BE PERFORMED UNDER THE AUTHORIZATION OF THE EXISTING NPDES PERMIT NER CSW-202509368. WEEKLY AND RAINFALL EVENT INSPECTIONS WILL BE CONDUCTED BY LAMP, RYNEARSON AND ASSOCIATES UNDER THE AUTHORITY OF THE PERMIT HOLDER.

#### NOTE:

SEE SHEET THIS SHEET FOR EROSION CONTROL MEASURES TO BE INSTALLED. THESE ARE PROPOSED LOCATIONS. IF THE CONTRACTOR WISHES TO USE ALTERNATE LOCATIONS IT MUST BE APPROVED BY THE ENGINEER.

#### ELEVATION NOTES

1. PROPOSED CONTOURS ARE FINISHED GRADE/TOP OF PAVEMENT ELEVATIONS. NOT SUBGRADE ELEVATIONS.
2. ALL SPOT ELEVATIONS IN PAVEMENT ARE TOP OF SLAB UNLESS NOTED OTHERWISE.

#### COMPACTION REQUIREMENTS TABLE

SEE GEOTECHNICAL ENGINEERING REPORT:	BLAIR DEVELOPMENT SITE		
PREPARED BY:	THIELE GEOTECH INC.		
ENGINEER:	CODY KIMBALL		
PROJECT NO:	18101.02		
DATED:	JANUARY 3, 2025		
MAX. DEPTH OF LIFT FOR FILL (MEASURED LOOSE)	8"		
AREA	TEST	COMPACTION	MOISTURE
UTILITY TRENCH BACKFILL (DEPTH < 5')	STANDARD PROCTOR	95%	-3/+4
UTILITY TRENCH BACKFILL (DEPTH > 5')	STANDARD PROCTOR	95%	-3/+4
PCC PAVEMENT SUBGRADE (UPPER 12")	MODIFIED PROCTOR	90%	-3/+4
ACC PAVEMENT SUBGRADE (UPPER 12")	MODIFIED PROCTOR	92%	-3/+4
MANHOLE + STRUCTURE BACKFILL (FULL DEPTH)	STANDARD PROCTOR	95%	-3/+4
SIDEWALK SUBGRADE (UPPER 6")	STANDARD PROCTOR	95%	-3/+4
ALL OTHER FILL	STANDARD PROCTOR	95%	-3/+6

#### NOTES:

1. STANDARD PROCTOR SHALL BE DETERMINED IN ACCORDANCE WITH ASTM D 698.
2. MODIFIED PROCTOR SHALL BE DETERMINED IN ACCORDANCE WITH ASTM D 1557.
3. SEE GEOTECH REPORT FOR FURTHER INFORMATION ON BUILDING PAD PREPARATION AND SITE PREPARATION.

#### STORMWATER POLLUTION PREVENTION KEYNOTES

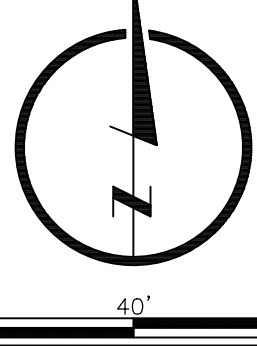
NOTE: ALL SWPPP-RELATED MEASURES AND BMPs SHALL BE MAINTAINED THROUGHOUT CONSTRUCTION AND SHALL BE THE RESPONSIBILITY OF THE CONTRACTOR. BMPs MUST REMAIN IN PLACE UNTIL THE PROJECT SITE IS FULLY STABILIZED OR AS DIRECTED BY THE EROSION CONTROL INSPECTOR. ALTERNATE LOCATIONS OF SWPPP-RELATED MEASURES SHALL BE COORDINATED WITH THE EROSION CONTROL INSPECTOR.

- G1 CONSTRUCT SWPPP NOTIFICATION SIGN IN ACCORDANCE WITH CITY OF OMAHA STANDARD PLATE 101-01.
- G2 CONSTRUCT CONSTRUCTION ENTRANCE IN ACCORDANCE WITH CITY OF OMAHA STANDARD PLATE 101-04.
- G3 CONSTRUCT STABILIZED VEHICLE AND EQUIPMENT PARKING AREA
- G4 CONSTRUCT SANITARY WASTE RECEPTACLE PER STANDARD SPECIFICATION 9.6.2 OF THE OMAHA REGIONAL STORMWATER DESIGN MANUAL.
- G5 CONSTRUCT SOLID WASTE RECEPTACLE PER STANDARD SPECIFICATION 9.6.3 OF THE OMAHA REGIONAL STORMWATER DESIGN MANUAL.
- G6 CONSTRUCT DESIGNATED MATERIAL DELIVERY AND STORAGE AREA PER STANDARD SPECIFICATION 9.6.4 OF THE OMAHA REGIONAL STORMWATER DESIGN MANUAL.
- G7 CONSTRUCT DESIGNATED VEHICLE AND EQUIPMENT FUELING AREA PER STANDARD SPECIFICATION 9.6.6 OF THE OMAHA REGIONAL STORMWATER DESIGN MANUAL.
- G8 CONSTRUCT CONCRETE WASHOUT IN ACCORDANCE WITH CITY OF OMAHA STANDARD PLATE 101-06.
- SF1-SF2 CONSTRUCT SILT FENCE IN ACCORDANCE WITH CITY OF OMAHA STANDARD PLATE 101-02.
- IP1-IP2 CONSTRUCT INLET PROTECTION IN ACCORDANCE WITH CITY OF OMAHA STANDARD PLATE 101-03.
- M CONSTRUCT EROSION PREVENTION BLANKET PER STANDARD SPECIFICATION 9.5.23 OF THE OMAHA REGIONAL STORMWATER DESIGN MANUAL. BLANKET SHALL BE NORTH AMERICAN GREEN SC150 OR APPROVED EQUIVALENT.

**LAMP  
RYNEARSON**

LAMP RYNEARSON.COM

OMAHA, NEBRASKA  
14710 W. DODGE RD. STE. 100 (402) 498-2498  
NE AUTHORIZATION NO.: CAD130  
FORT COLLINS, COLORADO  
4718 INNOVATION DR. STE. 100 (970) 228-0342  
KANSAS CITY, MISSOURI  
8001 STATE LINE RD. STE. 200 (816) 361-0440  
MO AUTH. NO.: E-2013011903 / LS-2015043127



AARON J. GROTE

E-13344

REMOVAL AND GRADING PLAN

PAVING PUBLIC IMPROVEMENTS  
BLAIR, NEBRASKA



Know what's below.  
Call before you dig.

#### REVISIONS


#### DESIGNER / DRAFTER

R. KELLER

DATE

04-18-2025

PROJECT NUMBER

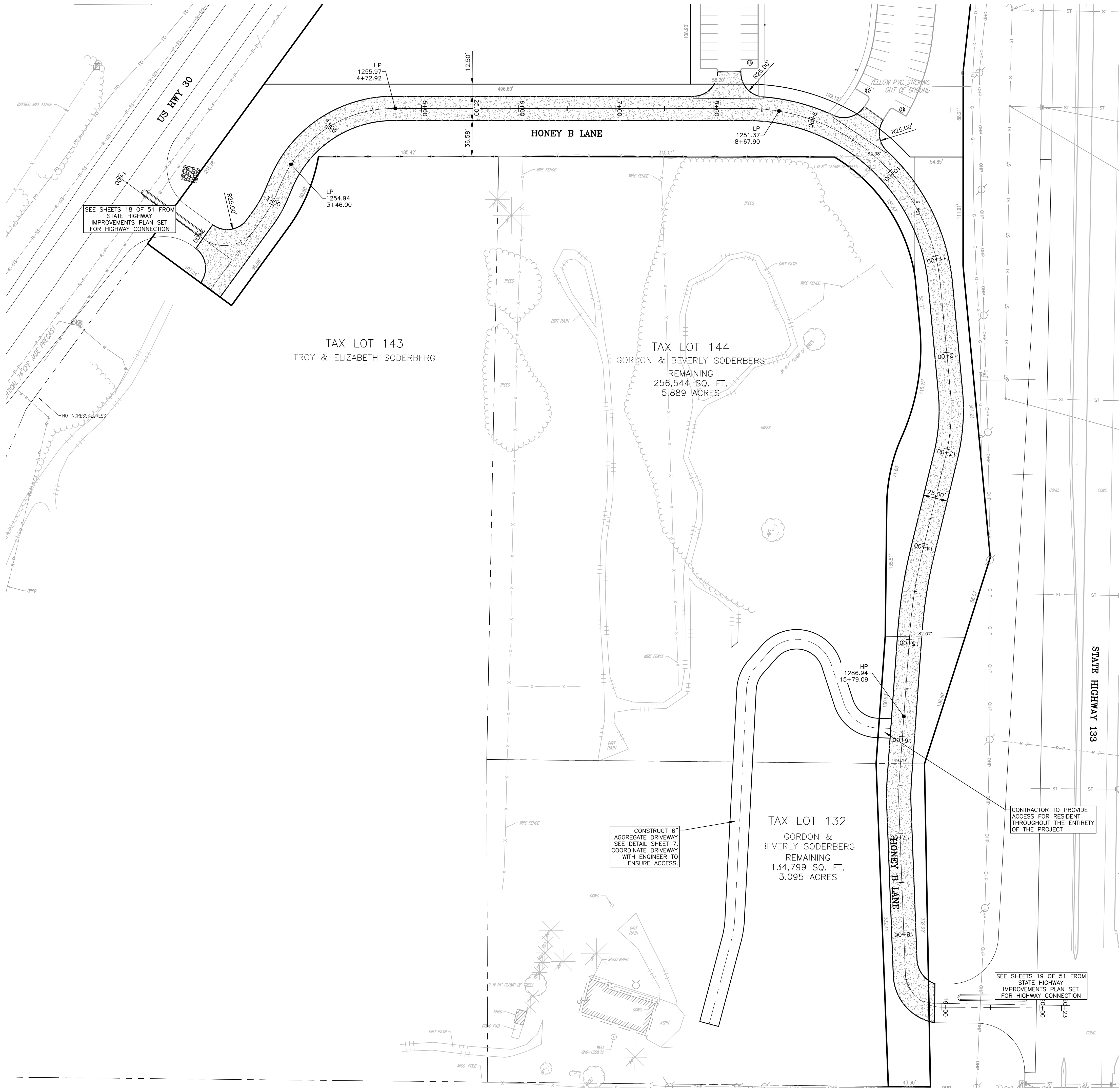
0124083.02-022/322

BOOK AND PAGE

#### SHEET

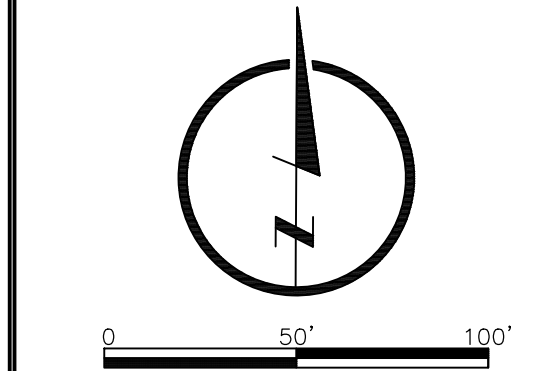


U:\Engineering\0124083 Blair Autiema\Drawings\CONSTRUCTION DRAWINGS\PUBLIC IMPROVEMENT - PAVING\0124083-PAV-NC-MAP.dwg, 4/17/2025 1:20:52 PM, AARON J. GROTE, LAMP RYNEARSON



LAMP  
RYNEARSON

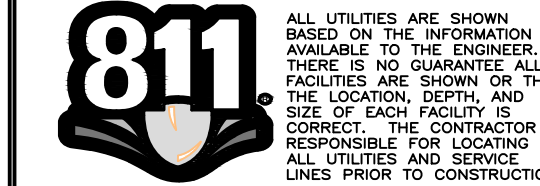
LAMP RYNEARSON.COM  
OMAHA, NEBRASKA  
14710 W. DODGE RD. STE. 100 (402) 496-2498  
NE AUTHORIZATION NO.: CAD130  
FORT COLLINS, COLORADO  
4716 INNOVATION DR. STE. 100 (970) 226-0342  
KANSAS CITY, MISSOURI  
8001 STATE LINE RD. STE. 200 (816) 361-0440  
MO AUTH. NO.: E-2013011903 | LS-2015043127



AARON J. GROTE  
E-13344

PAVING VICINITY MAP

PAVING PUBLIC IMPROVEMENTS  
BLAIR, NEBRASKA



Know what's below.  
Call before you dig.

REVISIONS

DESIGNER / DRAFTER  
R. KELLER  
DATE  
04-18-2025  
PROJECT NUMBER  
0124083.02-022/322  
BOOK AND PAGE

SHEET  
6 OF 11

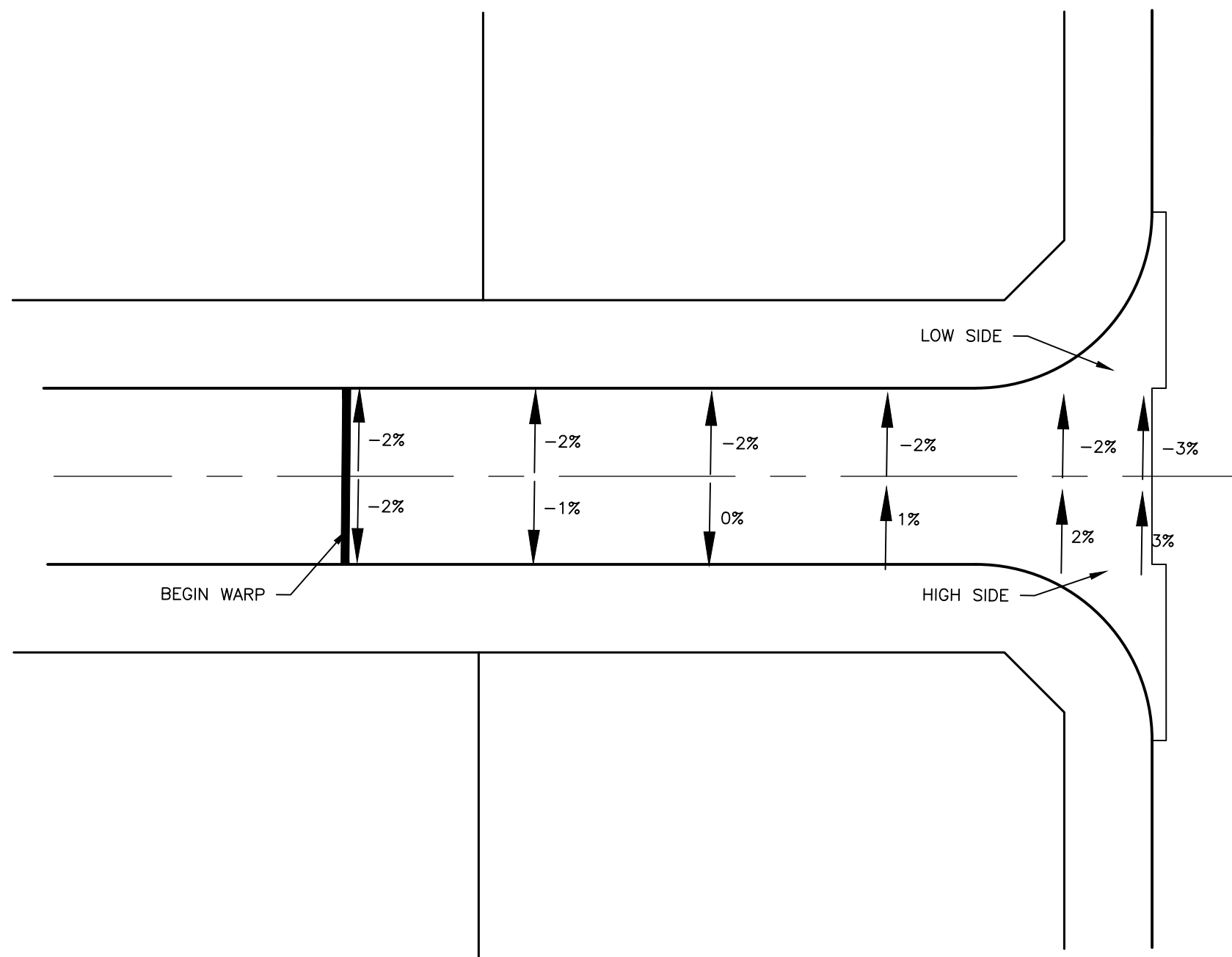
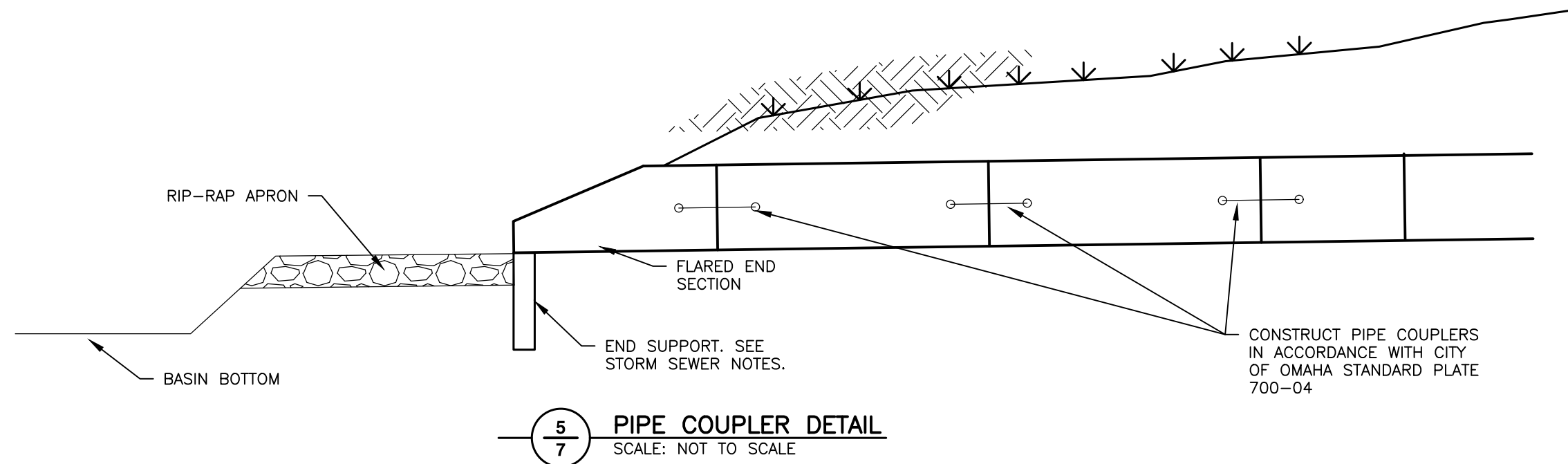
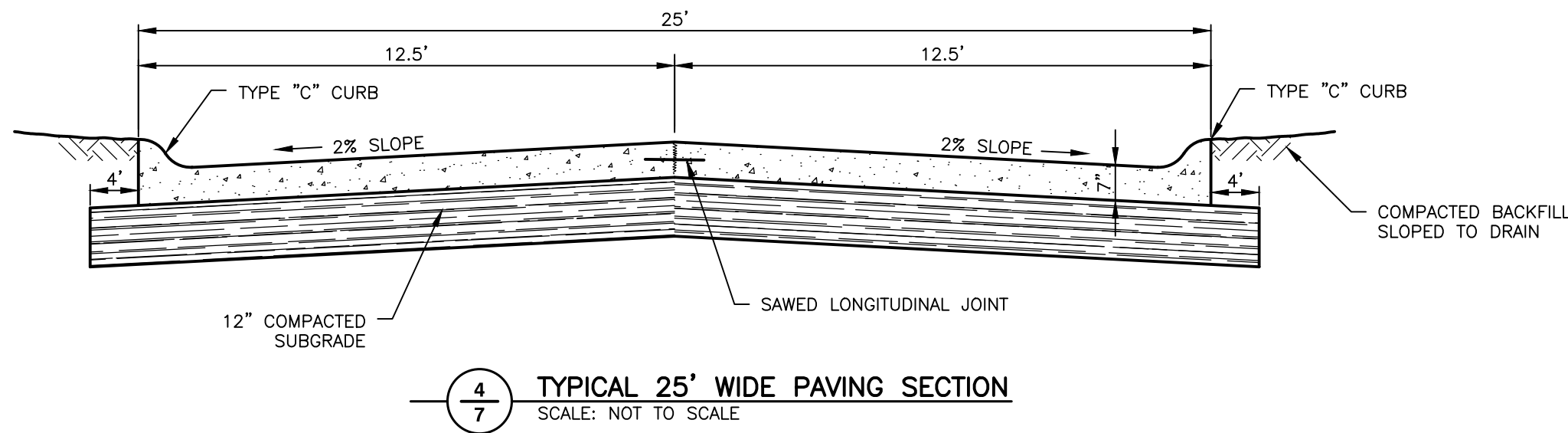
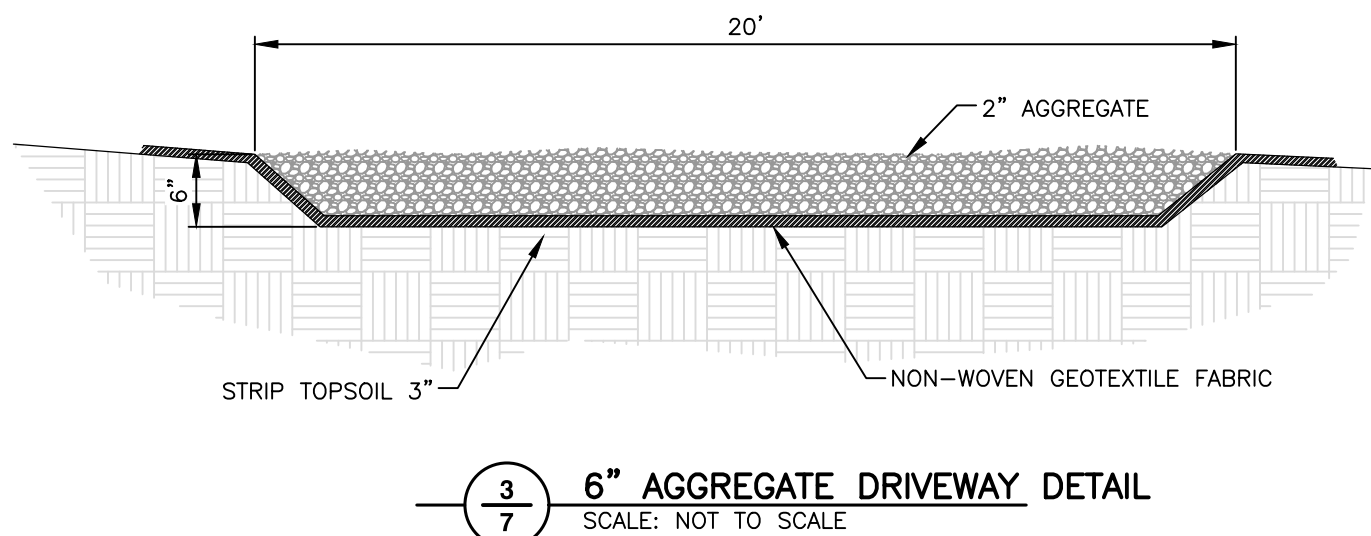
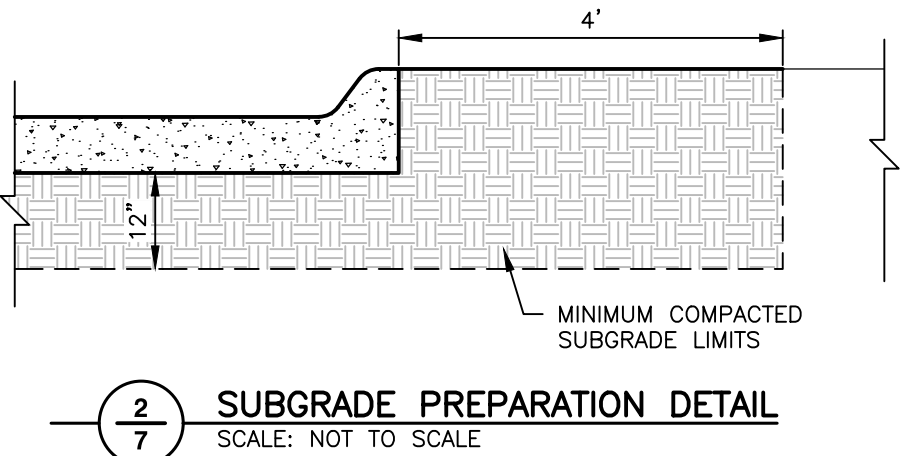
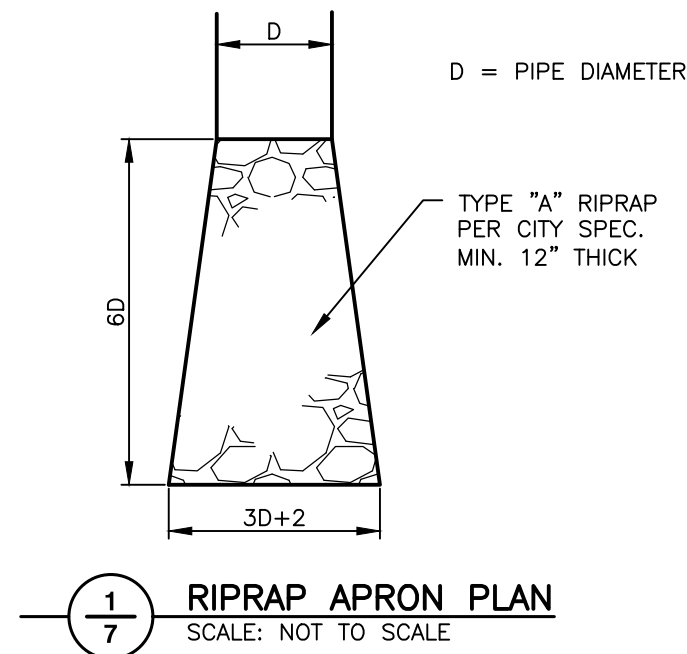


C:\Engineering\014083 Blair\_Municipal\Drawings\CONSTRUCTION DRAWINGS\PUBLIC IMPROVEMENTS - PAVING\014083-Paving-Notes-In-Detail.dwg, 4/11/2025, 10:57:52 AM, ARON J. GROTE, LAMP RYNEARSON

COMPACTION REQUIREMENTS TABLE			
SEE GEOTECHNICAL ENGINEERING REPORT:	BLAIR DEVELOPMENT SITE		
PREPARED BY:	THIELE GEOTECH INC.		
ENGINEER:	CODY KIMBALL		
PROJECT NO:	18101.02		
DATED:	JANUARY 3, 2025		
MAX. DEPTH OF LIFT FOR FILL (MEASURED LOOSE)	8"		
AREA	TEST	COMPACTION	MOISTURE
UTILITY TRENCH BACKFILL (DEPTH < 5')	STANDARD PROCTOR	95%	-3/+4
UTILITY TRENCH BACKFILL (DEPTH > 5')	STANDARD PROCTOR	95%	-3/+4
PCC PAVEMENT SUBGRADE (UPPER 12")	MODIFIED PROCTOR	90%	-3/+4
ACC PAVEMENT SUBGRADE (UPPER 12")	MODIFIED PROCTOR	92%	-3/+4
MANHOLE + STRUCTURE BACKFILL (FULL DEPTH)	STANDARD PROCTOR	95%	-3/+4
SIDEWALK SUBGRADE (UPPER 6")	STANDARD PROCTOR	95%	-3/+4
ALL OTHER FILL	STANDARD PROCTOR	95%	-3/+6

NOTES:

- STANDARD PROCTOR SHALL BE DETERMINED IN ACCORDANCE WITH ASTM D 698.
- MODIFIED PROCTOR SHALL BE DETERMINED IN ACCORDANCE WITH ASTM D 1557.
- SEE GEOTECH REPORT FOR FURTHER INFORMATION ON BUILDING PAD PREPARATION AND SITE PREPARATION.



WARP TABLE		
BEGIN WARP	LOW SIDE	HIGH SIDE
+00.00	-2%	-2%
+25.00	-2%	-1%
+50.00	-2%	0%
+75.00	-2%	1%
+100.00	-2%	2%
+125.00	-3%	3%

NOTES:

- BEGIN THE WARP AT THE STATION INDICATED ON THE PROFILE VIEW.
- WARP THE HIGH SIDE HALF OF THE STREET UP 1% EVERY 25 FEET UNTIL THE CROSS-SLOPE OF THE HIGH SIDE MATCHES THAT OF THE LOW SIDE AT 2%.
- THEN CONTINUE TO WARP THE ENTIRE WIDTH OF THE STREET AN ADDITIONAL 1% EVERY 25 FEET TO THE END OF RETURN OR AS OTHERWISE INDICATED IN THE PLAN VIEW.



STORM SEWER NOTES -- PUBLIC

- INLETS AND MANHOLES SHALL BE LOCATED IN ACCORDANCE WITH THE COORDINATES SHOWN. THE LENGTHS OF PIPES MAY VARY ACCORDINGLY.
- THE CONTRACTOR IS REFERRED TO THE FOLLOWING CITY OF OMAHA STANDARD PLATES:

700-01	CONCRETE COLLAR AND CRADLE
700-04	REINFORCED CONCRETE PIPE COUPLERS
700-05	CAST IRON MANHOLE RINGS AND COVERS
	(NOTE: MANHOLE COVERS SHALL BE SOLID COVER)
700-06	MANHOLE STEPS 701-01 SEWER BEDDING
702-08	AREA INLETS
702-09	CURB INLETS
702-11	STORM SEWER MANHOLE
702-12	FLARED END SECTIONS AND BAR GRATES
- TRENCH BACKFILL SHALL BE COMPACTED AS SHOWN IN THE COMPACTION REQUIREMENTS TABLE (SEE THIS SHEET).
- THE CONTRACTOR SHALL PLACE A WOODEN 2" X 2" MARKER AT THE END OF EACH PIPE WHICH TERMINATES AT A PROPOSED INLET.
- ALL REINFORCED CONCRETE PIPE 30-INCHES AND LESS IN DIAMETER SHALL CONFORM TO ASTM-76 WALL B, CLASS III. ALL REINFORCED CONCRETE PIPE 34-INCHES AND GREATER IN DIAMETER SHALL CONFORM TO ASTM C-76, WALL B, LOAD (DD.01=1350 LBS).
- ALL REINFORCED CONCRETE PIPE JOINTS SHALL BE INSTALLED USING RUBBER GASKETS IN ACCORDANCE WITH ASTM C443, STANDARD SPECIFICATIONS FOR JOINTS FOR CONCRETE PIPE AND MANHOLES, USING RUBBER GASKETS.
- CONCRETE FOR STORM SEWER STRUCTURES SHALL BE OPW 4000 USING TYPE II PORTLAND CEMENT. THE CEMENT FOR MANHOLE GROUT SHALL BE THE SAME AS THAT FOR MANHOLE CONCRETE AND SHALL MEET THE REQUIREMENTS OF THE CITY OF OMAHA STANDARD SPECIFICATIONS FOR PUBLIC WORKS CONSTRUCTION.
- ALL PIPE SHALL BE BEDDED IN ACCORDANCE WITH CITY OF OMAHA STANDARD PLATE 701-01.
- ELEVATIONS ARE REFERENCED TO N.A.V.D. 1988.
- THE ENGINEER/INSPECTOR MUST INSURE ALL STORM SEWER PIPE USED FOR CONSTRUCTION HAS BEEN CERTIFIED BY AMERICAN CONCRETE PIPE ASSOCIATION (ACPA). ALL PIPE MUST DISPLAY THE Q-CAST SYMBOL TO VERIFY THE MANUFACTURER HAS MET THE ACPA'S CERTIFICATION PROGRAM. VISUAL INSPECTIONS FOR DEFECTS SHALL CONTINUE TO TAKE PLACE ON THE SITE.

PORTLAND CEMENT CONCRETE (PCC) PAVING NOTES -- PUBLIC

- ALL PAVING ELEVATIONS ARE AT TOP OF SLAB UNLESS NOTED OTHERWISE.
- ALL PAVING SHALL BE CONSTRUCTED WITH NORMAL CROWN UNLESS NOTED OTHERWISE.
- CURBS SHALL BE TYPE "C" (DRIVE-OVER) IN ACCORDANCE WITH CITY OF OMAHA STANDARD PLATE 502-01 UNLESS NOTED OTHERWISE.
- PAVEMENT SUBGRADE TO A DEPTH OF 12 INCHES AND TO A WIDTH OF 4 FEET OUTSIDE PAVEMENT EDGES SHALL BE COMPACTED AS SPECIFIED IN THE COMPACTION REQUIREMENTS TABLE (SEE THIS SHEET).
- BACKFILL BEHIND CURBS SHALL BE COMPACTED AS SPECIFIED IN THE COMPACTION REQUIREMENTS TABLE (SEE THIS SHEET).
- DROP CURB FOR FUTURE WHEELCHAIR RAMPS, SHALL BE CONSTRUCTED AT ALL PAVING RETURNS. SEE CITY OF OMAHA STANDARD PLATE 504-01 FOR DETAILS.
- THE **CONTRACTOR** IS REFERRED TO THE FOLLOWING CITY OF OMAHA STANDARD PLATES:

501-01	CONCRETE PAVEMENT JOINTS
501-02	CONCRETE PAVEMENT WIDENING AND MISCELLANEOUS
501-03	25' RESIDENTIAL CONCRETE PAVEMENT
501-04	25' RESIDENTIAL GRADING SECTIONS WITHOUT SIDEWALK
502-01	CONCRETE CURBS
503-04	CONCRETE MEDIANS
504-01	CONCRETE CURB RAMPS
702-09	CURB INLETS
- CONCRETE SHALL BE IN ACCORDANCE WITH CITY OF OMAHA STANDARD SPECIFICATIONS FOR PUBLIC WORKS CONSTRUCTION, SECTION 500, UNLESS OTHERWISE NOTED, ALL CONCRETE SHALL BE OPW 3500.
- CONCRETE PAVEMENT SHALL BE CURED IN ACCORDANCE WITH THE PROJECT SPECIFICATIONS.
- WATER-REDUCING ADMIXTURE SHALL BE ADDED TO ALL HAND-PLACED AND FINISHED CONCRETE.
- INTERSECTION RETURNS SHALL HAVE A RADIUS OF 25 FEET AND CUL-DE-SAC RETURNS SHALL HAVE A RADIUS OF 37.5 FEET, UNLESS NOTED OTHERWISE.
- A DIAMOND EDGE SAW BLADE SHALL BE USED FOR CUTTING ALL REQUIRED CONTRACTION AND LONGITUDINAL PAVEMENT JOINTS.
- THE **CONTRACTOR** SHALL DISPOSE OF ALL UNSUITABLE MATERIALS ENCOUNTERED IN THE REMOVAL AND GRADING OPERATIONS OFF THE PROJECT SITE, INCLUDING CONCRETE, ASPHALT, OIL MAT, BRICK, ROCK ETC. NO UNSUITABLE MATERIAL AS DETERMINED BY THE **ENGINEER**, SHALL BE USED FOR BACKFILLING OR EMBANKMENT CONSTRUCTION.
- PAVING WIDTHS SHALL BE AS SHOWN ON THE PLANS. ALL DIMENSIONS SHOWN ARE BACK OF CURB TO BACK OF CURB.

LAMP  
RYNEARSON

LAMP RYNEARSON.COM

OMAHA, NEBRASKA  
14710 W. DODGE RD. STE. 100 (402) 496-2498  
NE AUTHORIZATION NO. C24030  
FORT COLLINS, COLORADO  
4715 INNOVATION DR., STE. 100 (970) 226-0342  
KANSAS CITY, MISSOURI  
9801 STATE LINE RD. STE. 200 (816) 361-9440  
MO AUTH. NO. E-2013011903 | LS-2019043127

ARON J. GROTE

E-13344

PAVING NOTES AND DETAILS

PAVING PUBLIC IMPROVEMENTS  
BLAIR, NEBRASKA



Know what's below.  
Call before you dig.

REVISIONS


DESIGNER / DRAFTER

R. KELLER

DATE

04-18-2025

PROJECT NUMBER

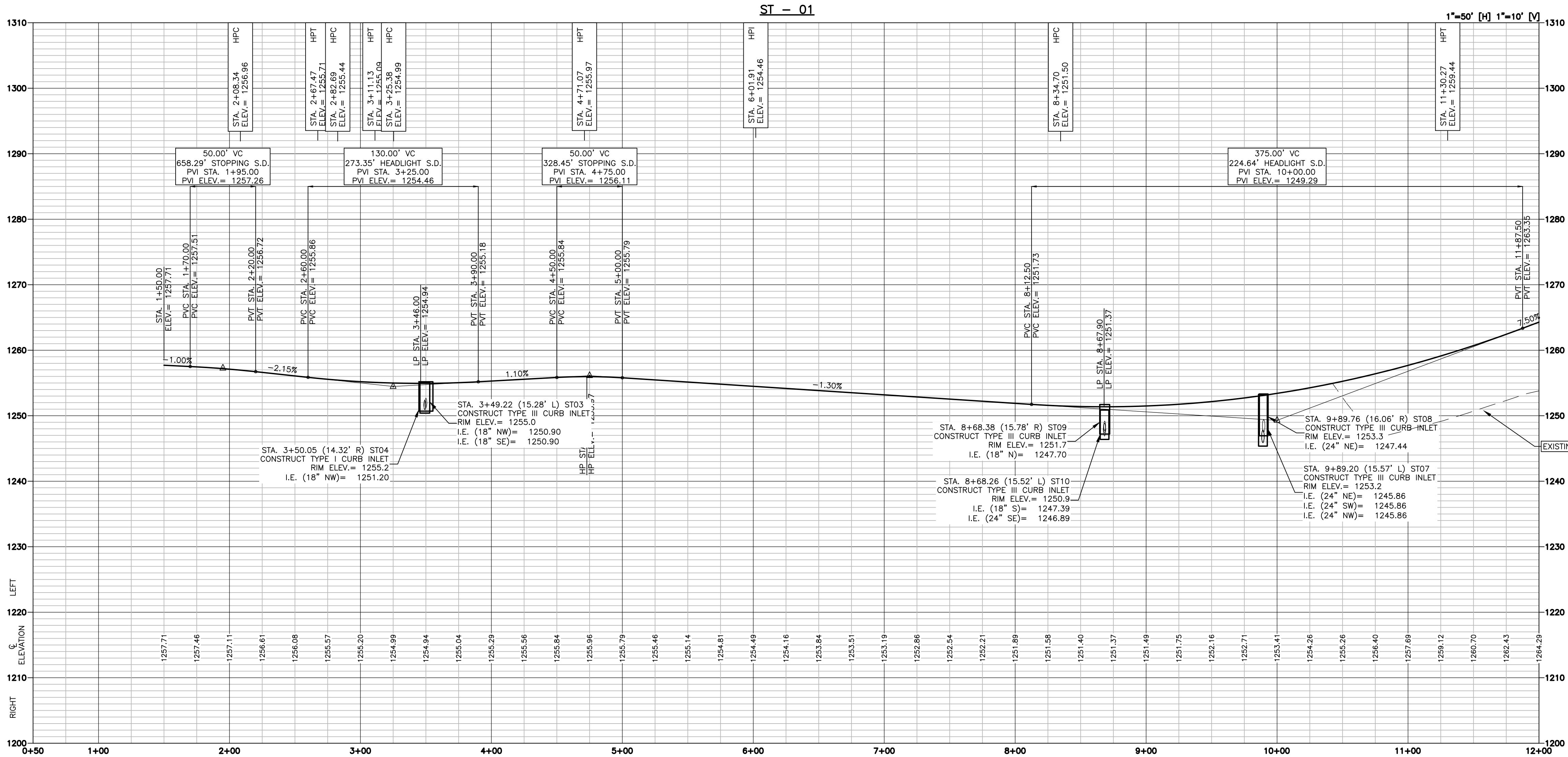
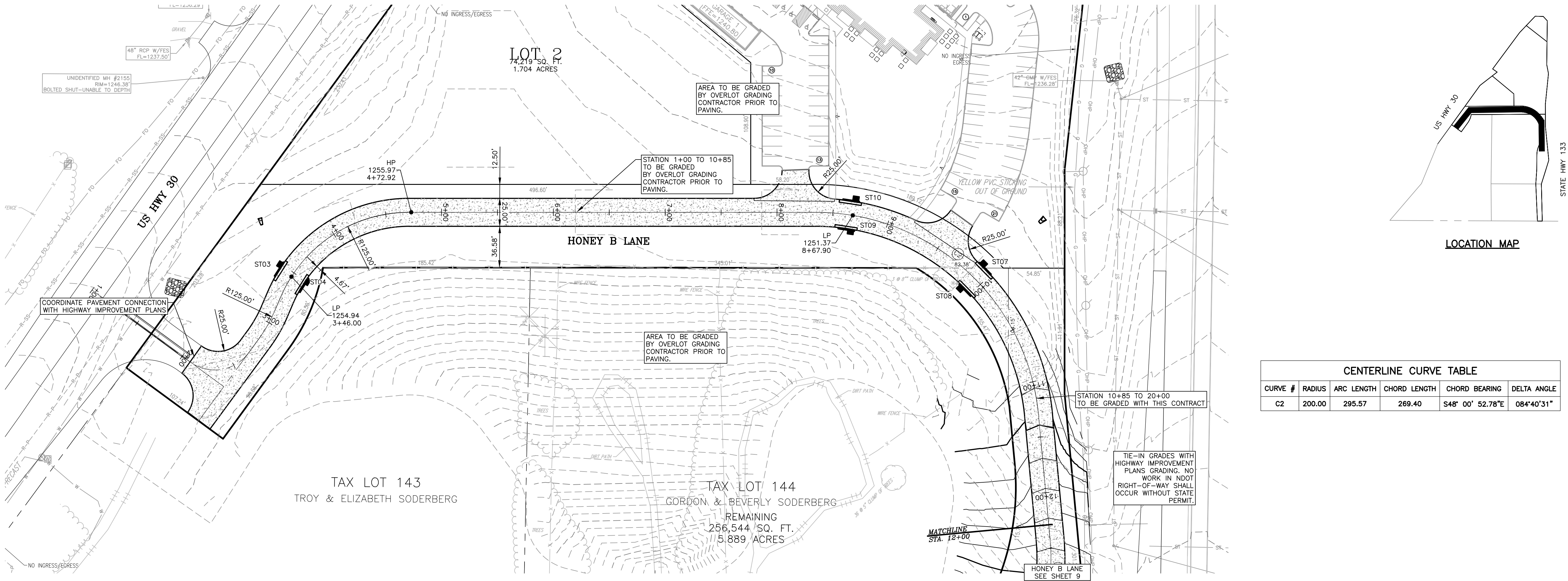
0124083.02-022/322

BOOK AND PAGE

SHEET

7 of 11

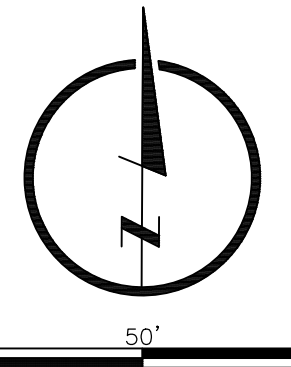




LAMP  
RYNEARSON

LAMPRYNEARSON.COM

OMAHA, NEBRASKA  
14710 W. DODGE RD. STE. 100 (402) 496-2498  
NE AUTHORIZATION NO.: CAD130  
FORT COLLINS, COLORADO  
4710 INNOVATION DR. STE. 100 (970) 226-0342  
KANSAS CITY, MISSOURI  
8001 STATE LINE RD. STE. 200 (816) 361-0440  
MO AUTH. NO.: E-2013011903 | LS-2015043127



AARON J. GROTE  
E-13344

PAVING  
PLAN AND PROFILE  
[ST01] HONEY B LANE

PAVING PUBLIC IMPROVEMENTS  
BLAIR, NEBRASKA



Know what's below.  
Call before you dig.

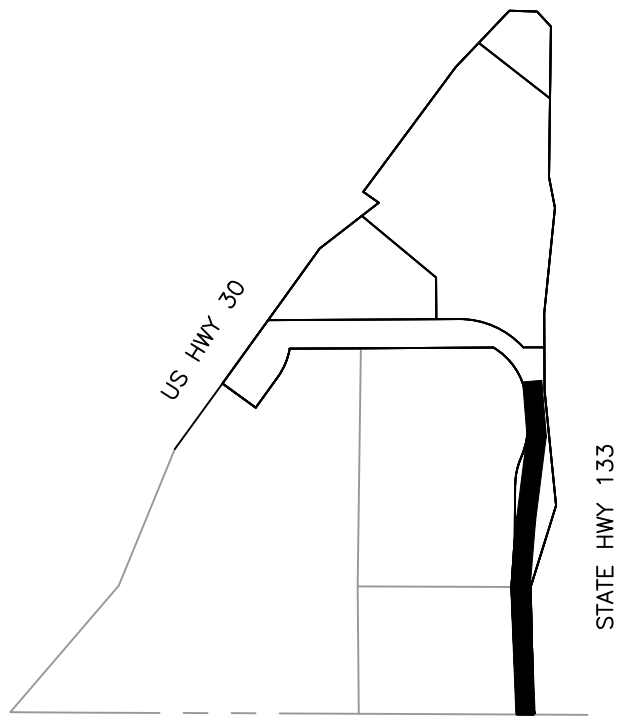
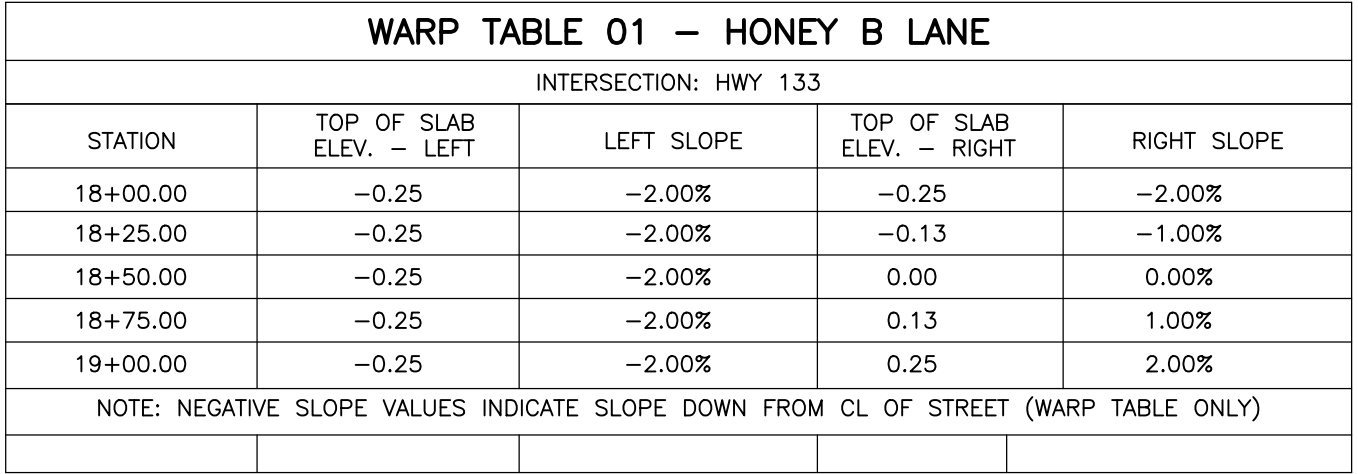
REVISIONS

DESIGNER / DRAFTER  
R. KELLER  
DATE  
04-18-2025  
PROJECT NUMBER  
0124083.02-022/322  
BOOK AND PAGE

SHEET

8 OF 11





CENTERLINE CURVE TABLE					
CURVE #	RADIUS	ARC LENGTH	CHORD LENGTH	CHORD BEARING	DELTA ANGLE
C3	200.00	66.28	65.98	S03° 49' 00.33"W	018°59'16"
C4	500.00	83.26	83.16	S08° 32' 25.17"W	009°32'26"
C5	250.00	27.65	27.64	S00° 36' 04.48"W	006°20'15"

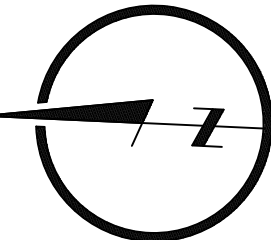


LAMPRYNEARSON.COM

**OMAHA, NEBRASKA**  
14710 W. DODGE RD. STE. 100 (402) 496.2498  
NE AUTHORIZATION NO.: CA0130

**FORT COLLINS, COLORADO**  
715 INNOVATION DR., STE. 100 (970) 226.0342

**KANSAS CITY, MISSOURI**  
9001 STATE LINE RD., STE. 200 (816) 361.0440  
MO AUTH. NO.: E-2013011903 | LS-20190431277



RON J. GROTH

E-13344

PAVING  
PLAN AND PROFILE  
[ST01] HONEY B LANE [CONT]

**PAVING PUBLIC IMPROVEMENTS  
BLAIR, NEBRASKA**



Know what's **below**.  
**Call** before you dig.

## REVISIONS

DESIGNER / DRAFTER

R. KELLER

DATE \_\_\_\_\_

04-18-2025

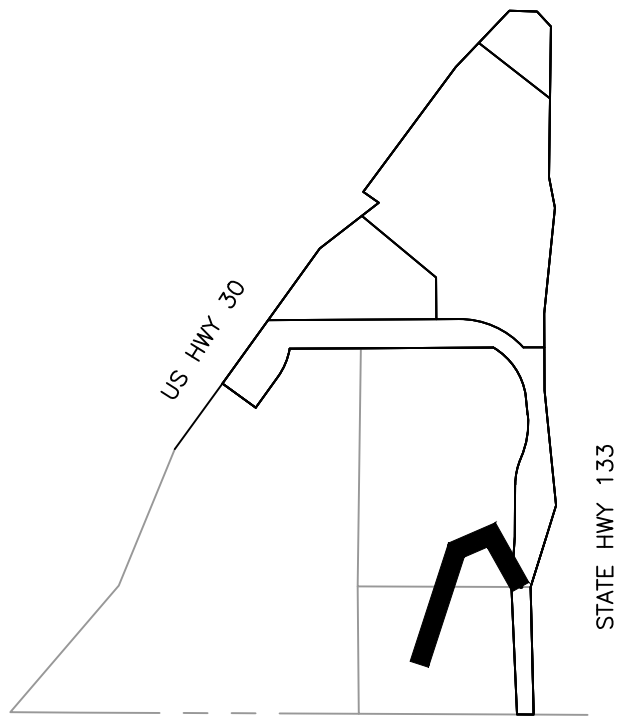
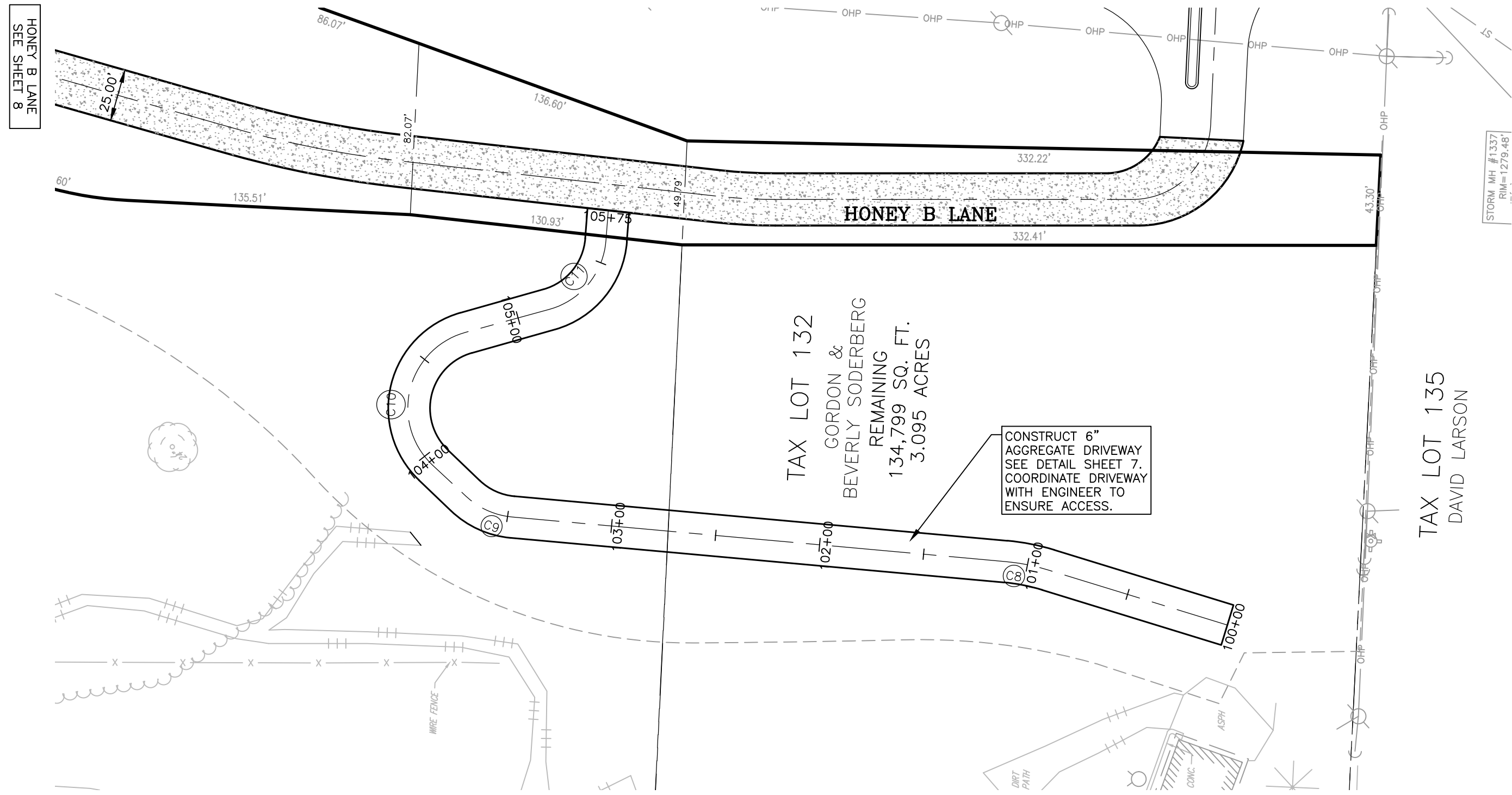
PROJECT NUMBER

0124083.02-022

BOOK AND PAGE

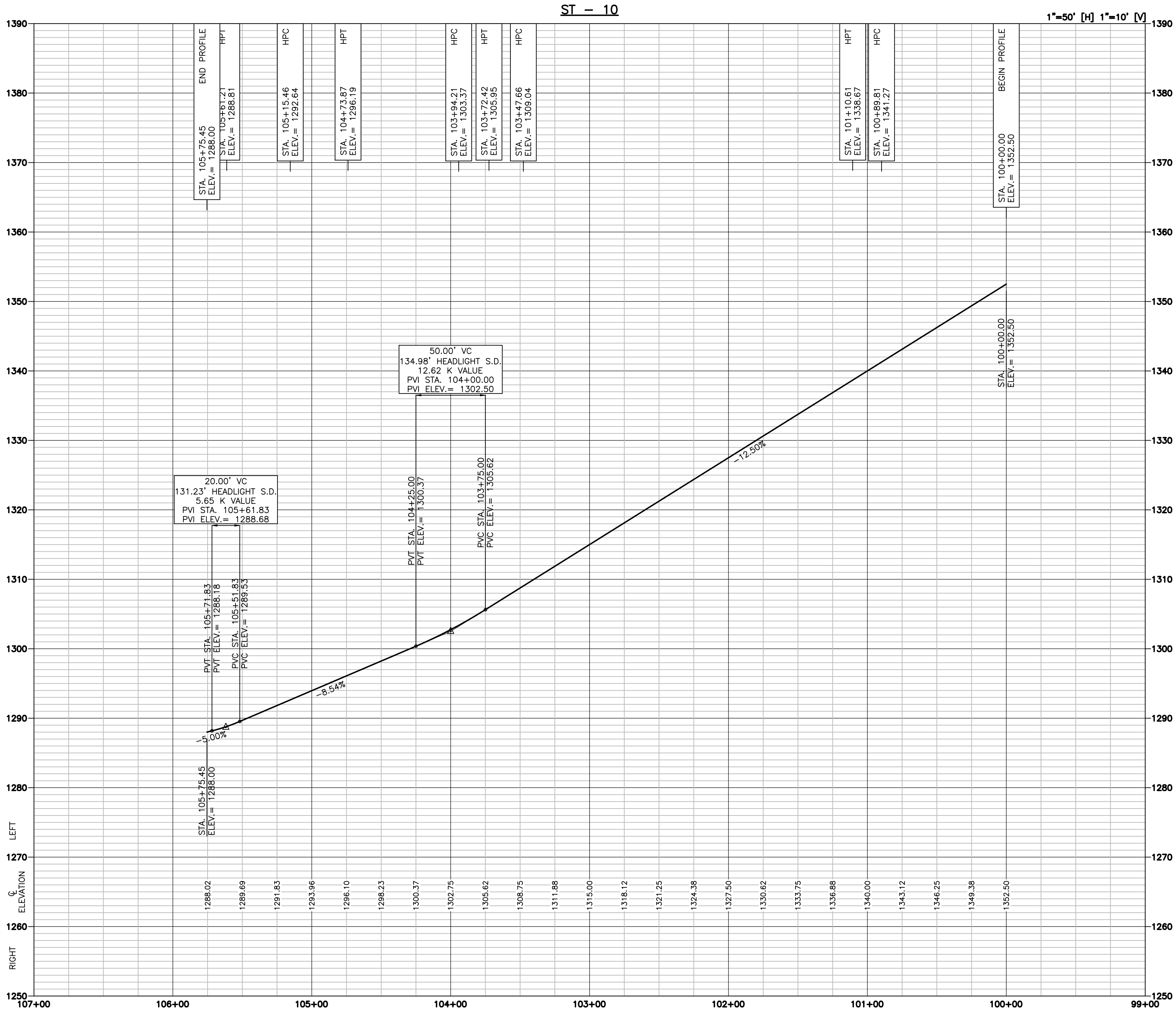
**SHEET**





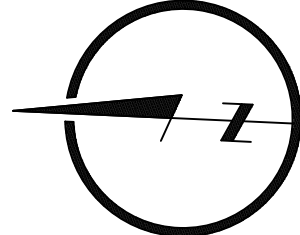
LOCATION MAP

CENTERLINE CURVE TABLE					
CURVE #	RADIUS	ARC LENGTH	CHORD LENGTH	CHORD BEARING	DELTA ANGLE
C8	100.00	20.79	20.76	N08° 32' 49.92"E	011°54'48"
C9	37.52	24.75	24.30	N21° 29' 26.49"E	037°48'01"
C10	37.50	79.66	65.50	S78° 44' 41.65"E	121°42'39"
C11	37.08	45.75	42.90	S53° 14' 37.94"E	070°42'08"



LAMP  
RYNEARSON

LAMP RYNEARSON.COM  
OMAHA, NEBRASKA  
14710 W. DODGE RD. STE. 100 (402) 496-2498  
NE AUTHORIZATION NO.: CAD130  
FORT COLLINS, COLORADO  
4716 INNOVATION DR. STE. 100 (970) 226-0342  
KANSAS CITY, MISSOURI  
8001 STATE LINE RD. STE. 200 (816) 361-0440  
MO AUTH. NO.: E-2013011903 (LS-2015043127)



0 50' 100'

AARON J. GROTE

E-13344

DRIVEWAY  
PLAN AND PROFILE

PAVING PUBLIC IMPROVEMENTS  
BLAIR, NEBRASKA



ALL UTILITIES ARE SHOWN BASED ON THE INFORMATION AVAILABLE TO THE ENGINEER. THERE IS NO GUARANTEE ALL UTILITIES ARE SHOWN OR THAT THE LOCATION, DEPTH, AND SIZE OF EACH FACILITY IS CORRECT. THE CONTRACTOR IS RESPONSIBLE FOR LOCATING ALL UTILITIES AND SERVICE LINES PRIOR TO CONSTRUCTION.

REVISIONS

DESIGNER / DRAFTER

R. KELLER

DATE

04-18-2025

PROJECT NUMBER

0124083.02-022/322

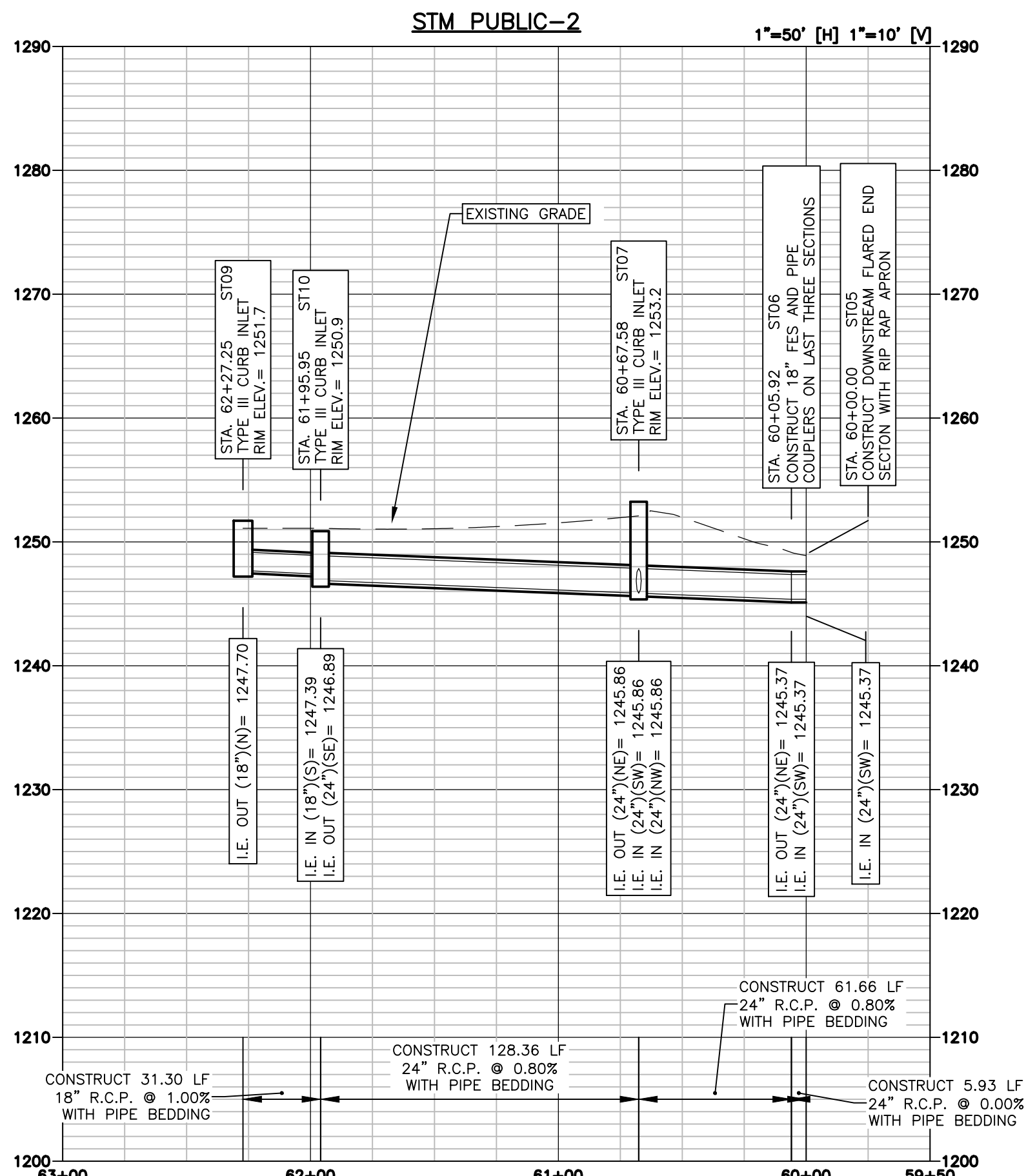
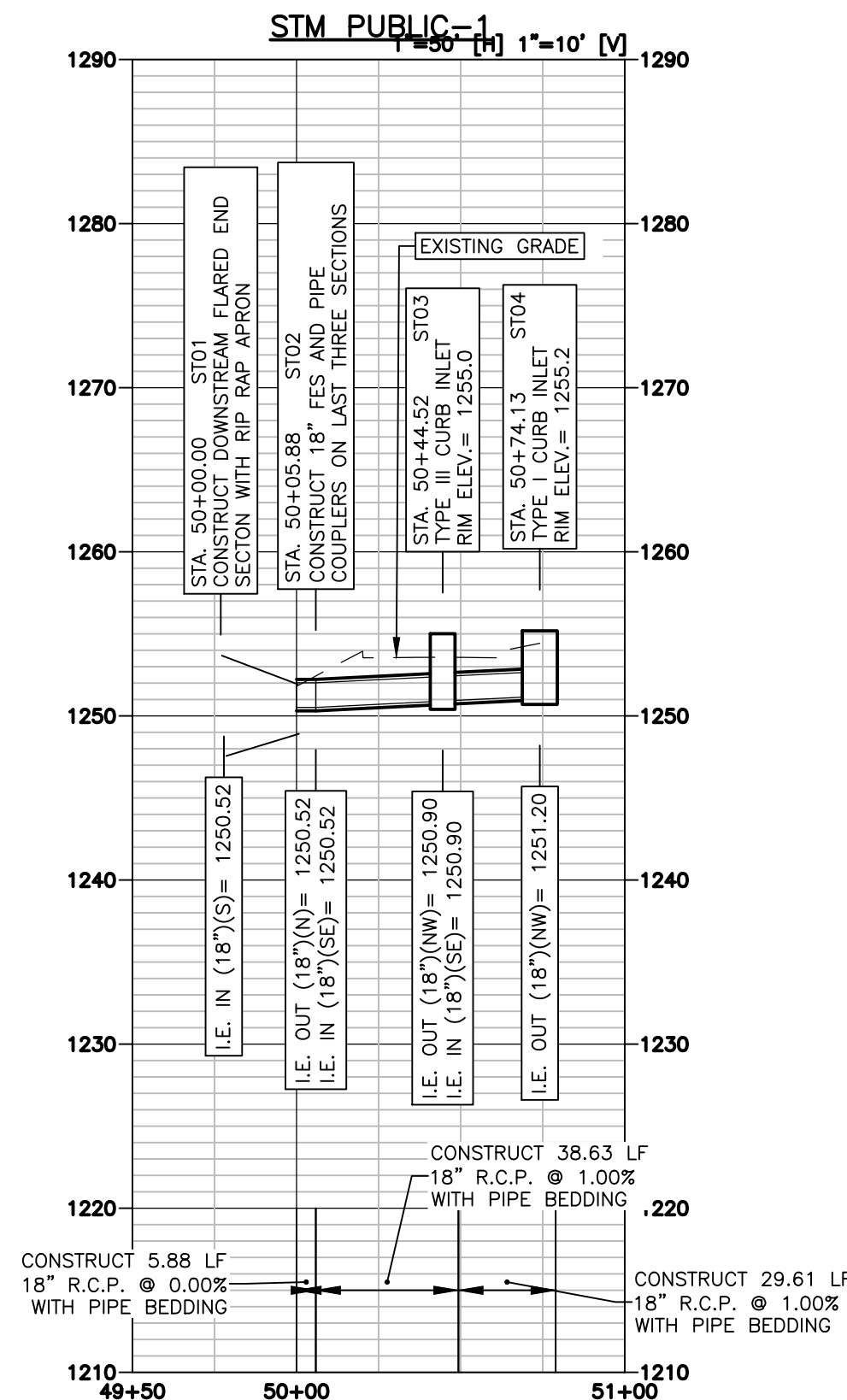
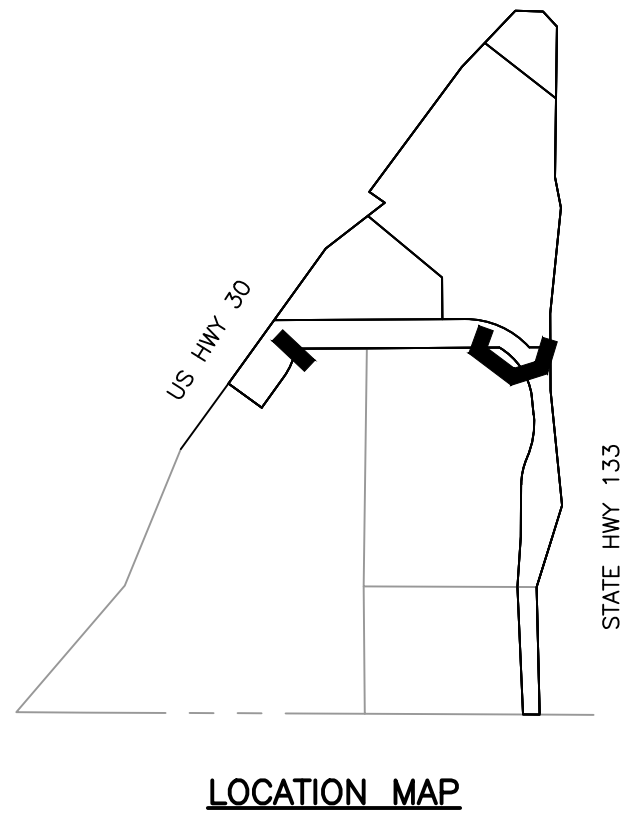
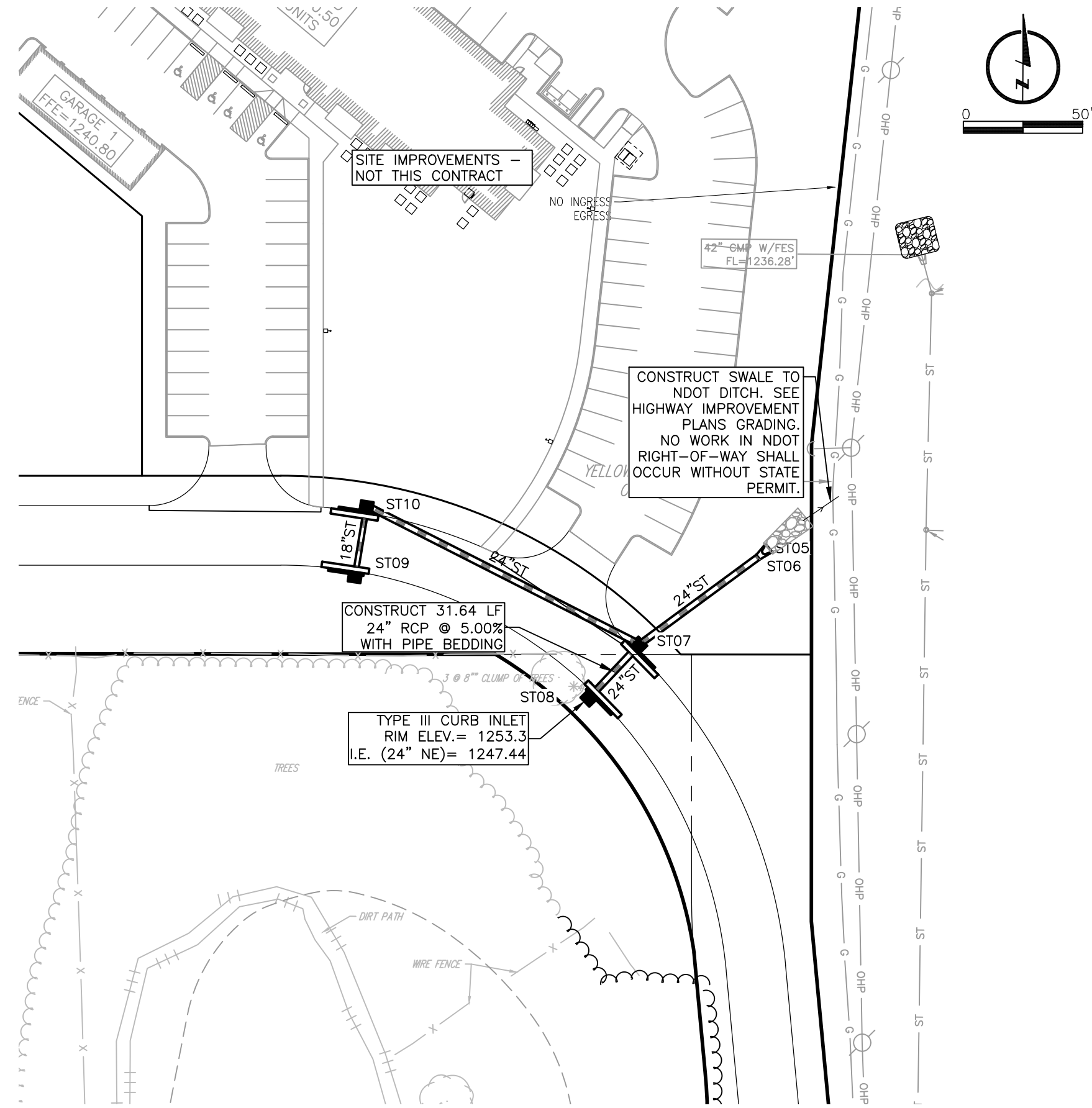
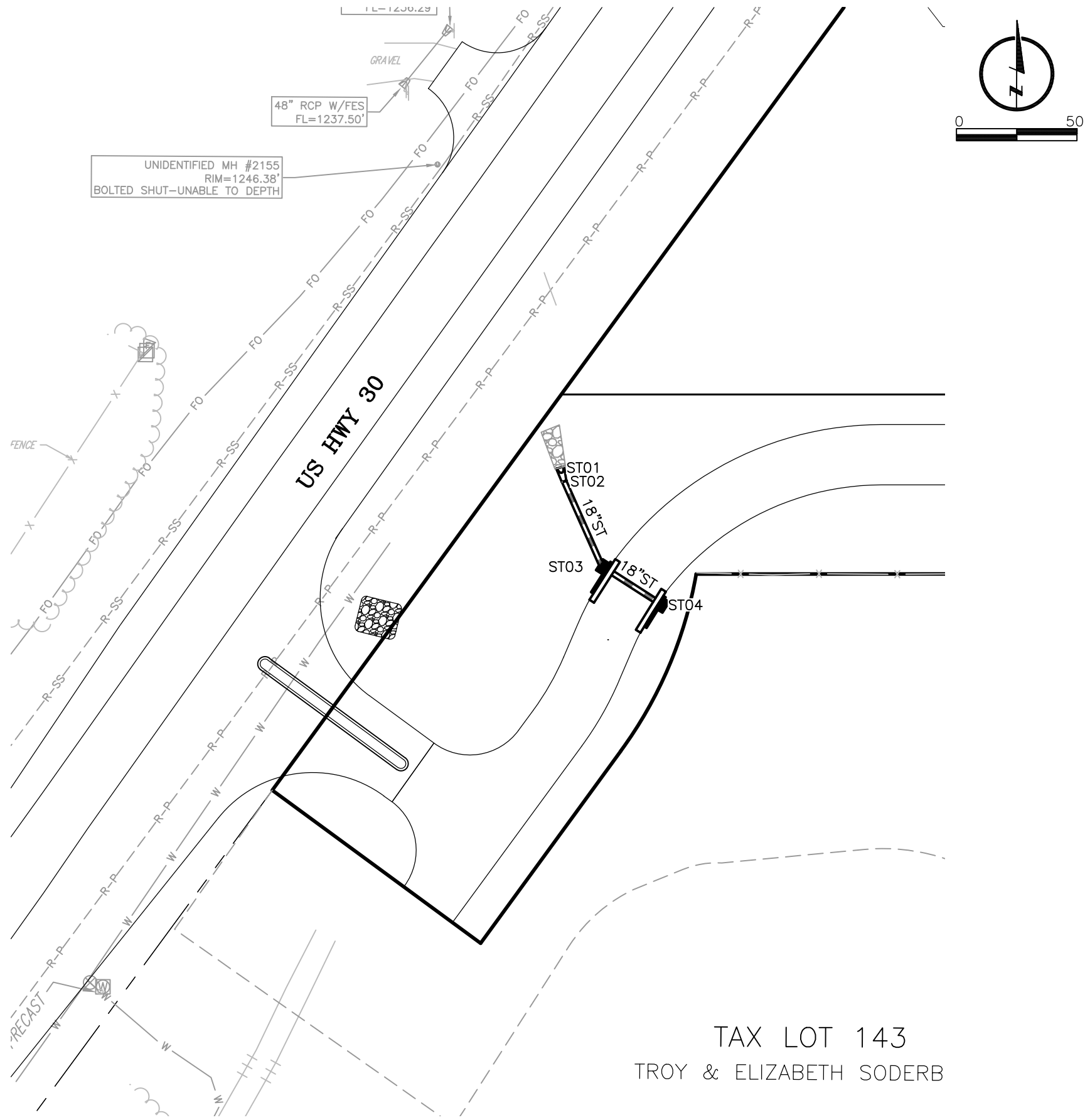
BOOK AND PAGE

SHEET

10 OF 11



U:\Engineering\2124083 Blair Authority\Drawings\CONSTRUCTION DRAWINGS\PUBLIC IMPROVEMENT - PAVING\2124083-STM-rwp.dwg, 4/7/2025 12:14 PM, AARON J. GROTE, LAMP RYNEARSON



LAMP  
RYNEARSON

LAMP RYNEARSON.COM

OMAHA, NEBRASKA  
14710 W. DODGE RD. STE. 100 (402) 498-2498  
NE AUTHORIZATION NO.: CAD130  
FORT COLLINS, COLORADO  
4716 INNOVATION DR. STE. 100 (970) 226-0342  
KANSAS CITY, MISSOURI  
9001 STATE LINE RD. STE. 200 (816) 361-0440  
MO AUTH. NO.: E-2013011903 | LS-2015043127

AARON J. GROTE  
E-13344

STORM SEWER  
PLAN AND PROFILE  
[STM PUBLIC-1] HONEY B LANE AND [STM PUBLIC-2] HONEY B LANE  
PAVING PUBLIC IMPROVEMENTS  
BLAIR, NEBRASKA



Know what's below.  
Call before you dig.

REVISIONS

DESIGNER / DRAFTER

R. KELLER

DATE

04-18-2025

PROJECT NUMBER

0124083.02-022/322

BOOK AND PAGE

SHEET

11 OF 11