

PARTICIPANT SECTION
FOR THE

ARLINGTON PUBLIC SCHOOL
DISTRICT

Papio-Missouri River NRD
Multi-Jurisdictional Hazard Mitigation Plan Update

January 2016

INTRODUCTION

The 2016 Papio-Missouri River Natural Resources District (P-MRNRD) Multi-Jurisdictional Hazard Mitigation Plan (HMP) is an update to the plan that was adopted by the P-MRNRD in August 2011. This HMP includes two primary sections: the Regional Hazard Mitigation Plan and the Participant (i.e. County, Municipal, and School District) Sections. Participant Sections include similar information that’s also provided in the Regional section, but rather is specific information for the Arlington Public School District, including the following elements:

- Participation
- Location / Services
- Demographics
- Future Development
- Critical Facilities
- School Drills and Staff Trainings
- Risk Assessment
- Administration / Capability Assessment
- Plan Integration
- Mitigation Strategy

PARTICIPATION

LOCAL PLANNING TEAM

Table APS.1 provides the list of participating members that comprised the Arlington Public School District local planning team. Members of the planning team attended Round 1 and Round 2 meetings and provided important information including but not limited to: confirming demographic information, critical facilities, hazard history and impacts, identifying hazards of greatest concern for the district, and prioritization of mitigation actions that address the hazards at risk to the district.

Table APS.1: Arlington Public Schools Local Planning Team

Name	Title	Department / Organization
Lynn Johnson	Superintendent	Arlington Public Schools

PUBLIC PARTICIPATION

The local planning team made efforts to notify the public of this planning effort and how they could participate in the development of the plan update. The following table identifies the dates and types of public outreach notifications.

Table APS.2: Public Notification Efforts

Date	Notification	Location
February 17, 2015	Project Website	http://jeo.com/papiohmp/
August 10, 2015	Passed Resolution of Participation	School Board Meeting
December 2015	Participant Section available for public comment and review	http://jeo.com/papiohmp/

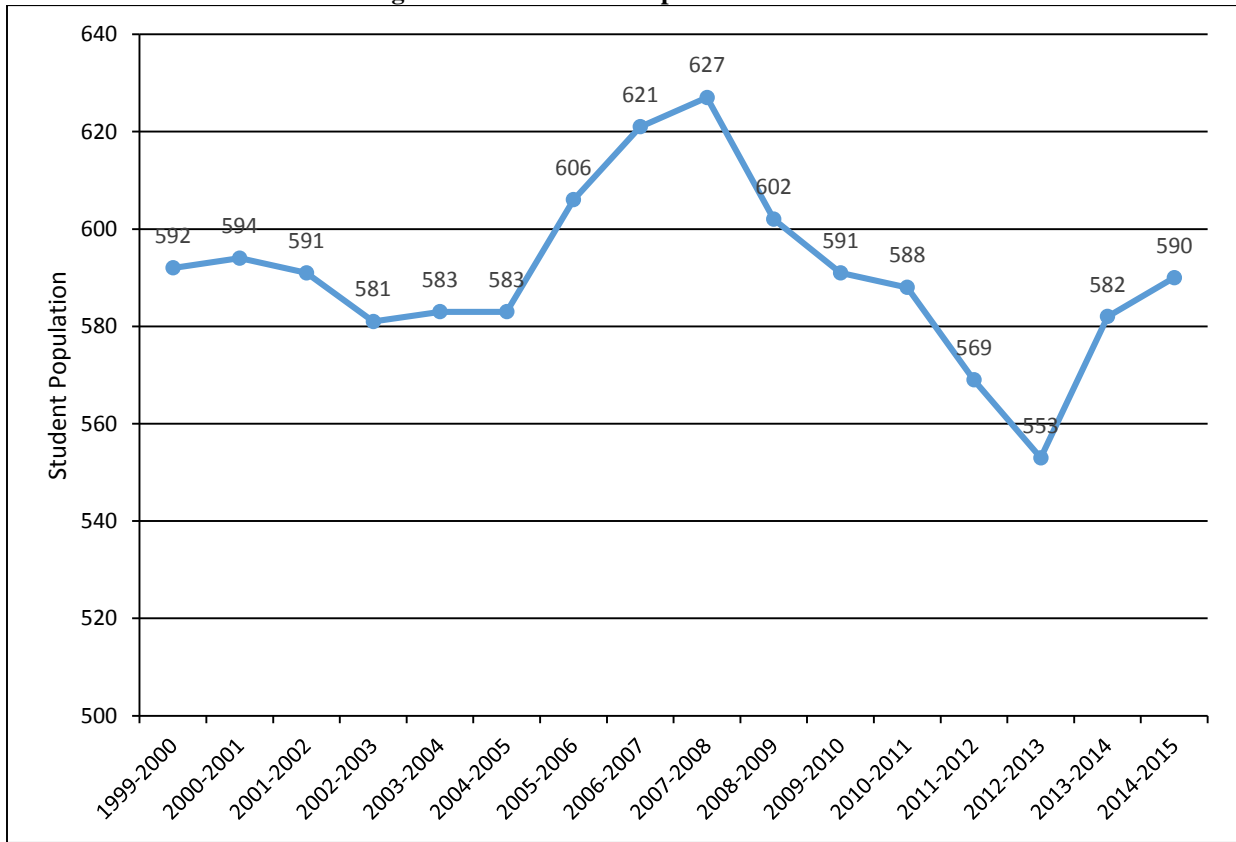
LOCATION AND SERVICES

Arlington Public Schools operates an elementary school and high schools with approximately 600 students enrolled. The district provides services to students living in portions of Washington, Dodge, and Douglas Counties and includes the communities of Arlington, Kennard, and Elk City. The school is utilized throughout the year after normal school hours for a variety of events.

DEMOGRAPHICS

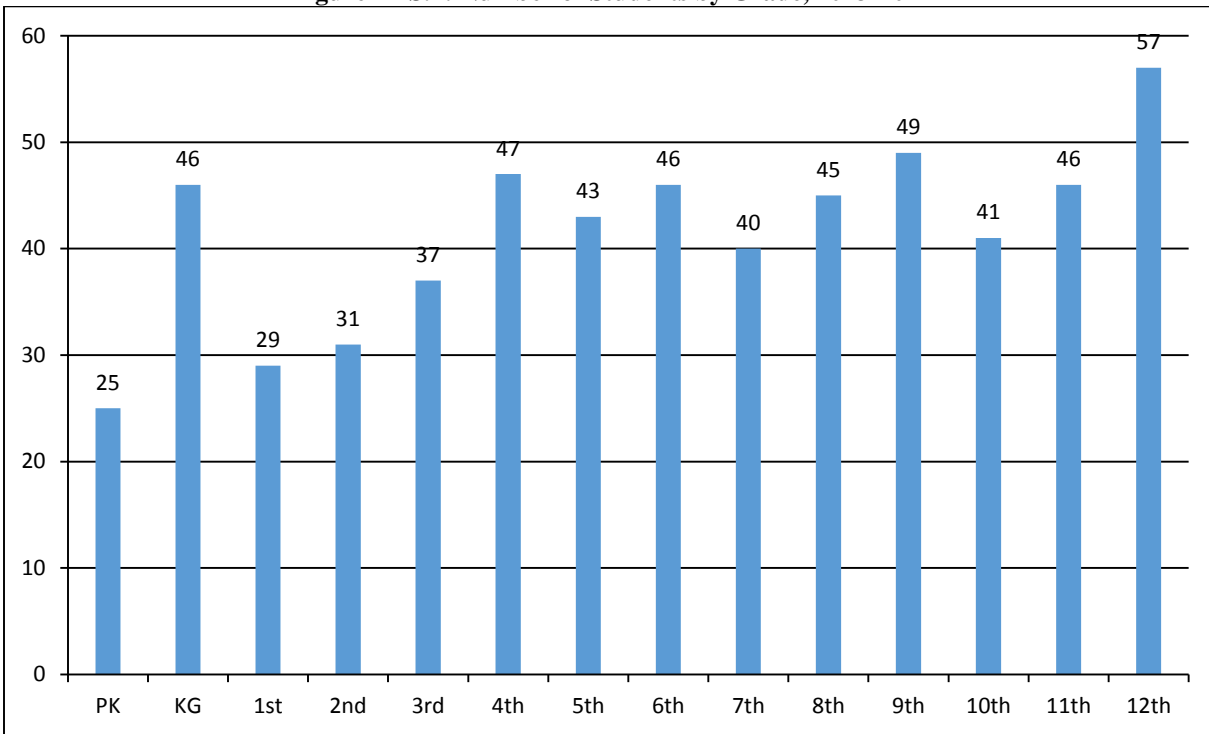
The following figure displays the historical student population trend starting with the 1999-2000 school year and ending with the 2014-2015 year. There are 590 students enrolled in the district. It is anticipated that enrollment will be consistent in the coming years.

Figure APS.1: Student Population 2000-2015



Source: Nebraska Department of Education

Figure APS.2: Number of Students by Grade, 2013-2014



Source: Nebraska Department of Education

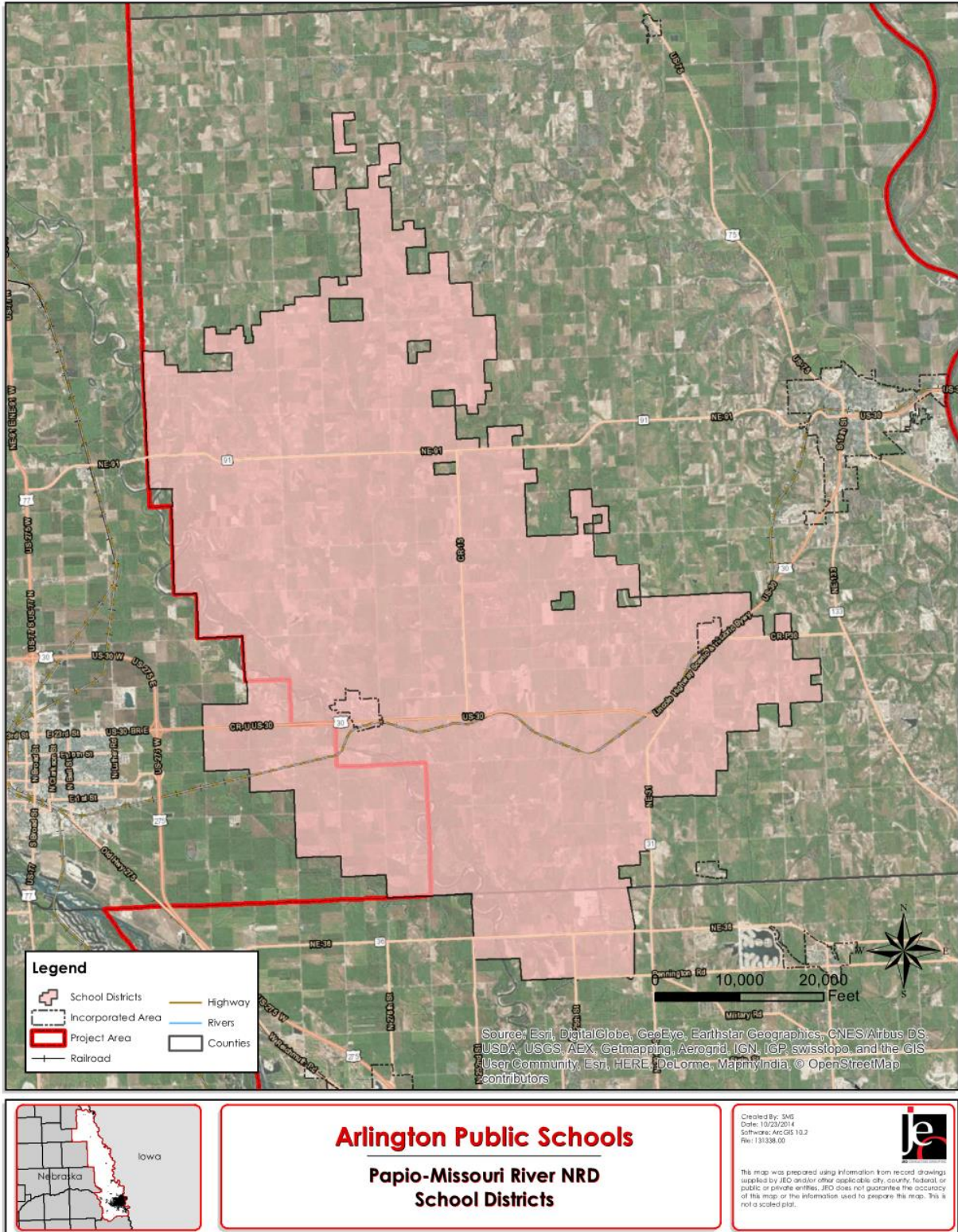
The figure above indicates that the largest number of students are in the 9th and 12th grades. The lowest population of students are pre-kindergarten, 1st, and 2nd grades. According to the Nebraska Department of Education, nearly 22 percent of students receive either free or reduced priced meals at school. This is significantly lower than the state average at nearly 45%. Additionally, nearly 12% of students are in the Special Education Program. These particular students may be more vulnerable during a hazardous event than the rest of the student population.

Table APS.3: Student Statistics, 2013-2014

	School District	State of Nebraska
Free/Reduced Priced Meals	21.65%	44.93%
School Mobility Rate	7.18%	12.10%
English Language Learners	*	6.04%
Special Education Students	11.67%	15.74%

Source: Nebraska Department of Education
 *Information withheld

Figure APS.1: School District Map



FUTURE DEVELOPMENT TRENDS

In 2009, the district completed a renovation project of 20,000 sq. ft. and 49,000 sq. ft. of new construction. These renovations included a new addition with fine arts, media space, and classrooms; a remodel of the entire elementary space; added buzz-in doors; and moved the administration offices. There are no additional plans for construction in the next five years.

CRITICAL FACILITIES

The school district operates one facility. The facility is listed below, along with information indicating the school’s address, number of students and staff, if the facility is used as a shelter during an emergency, and the presence of a tornado safe room.

Table APS.1: Critical Facilities

CF #	Name	Address	Number of Students	Number of Staff	Red Cross Shelter	Safe Room	Located in Floodplain	Back-up Power Generator
					(Y/N)	(Y/N)	(Y/N)	(Y/N)
1	Arlington Elementary and High School	705 N. 9 th	311, 279	70	Y	N	N	N

SCHOOL DRILLS AND STAFF TRAINING

Students and staff participate in a number of drills throughout the school year. The school follows the Standard Response Protocol (SRP Model) for the types of drills that are covered, which are: shelter-in-place (i.e. tornado drills twice per year), evacuation (i.e. fire drills every month), lockdowns (i.e. active shooter), lockouts (i.e. suspect in the community), and bus evacuations (twice per year).

Staff are trained on at least an annual basis utilizing the SRP model. The district works with the local fire department, Washington County Sheriff, Region 5/6 Emergency Management, and State Patrol to teach students about preparedness and assistance with district drills. The school also sends home information flyers to parents on the SRP model.

Figure APS.4: Critical Facilities

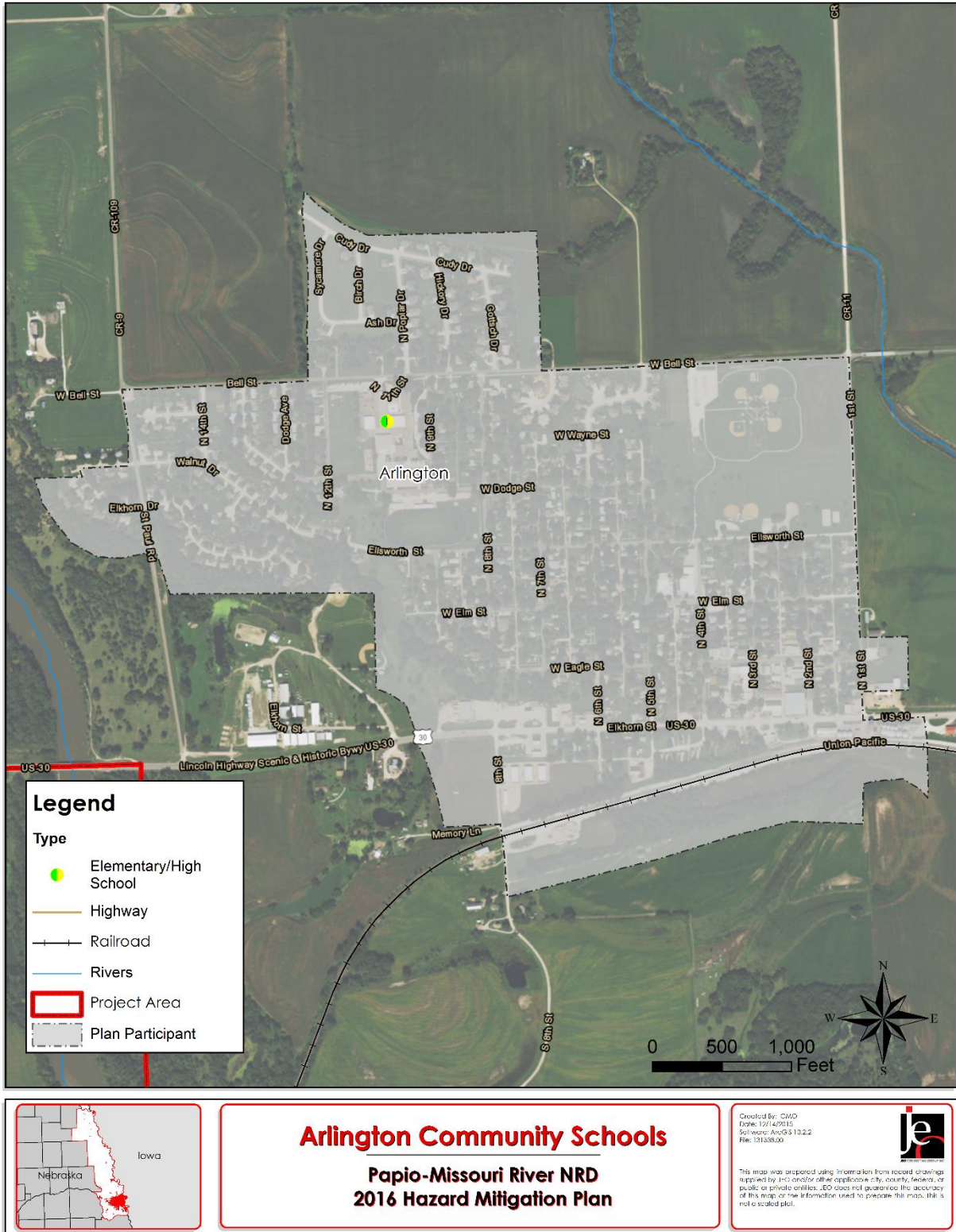



Figure APS.4: SRP Model Handout



STUDENT SAFETY
A critical ingredient in the safe school recipe is the classroom response to an incident at school. Weather events, fire, accidents, intruders and other threats to student safety are scenarios that are planned and trained for by students, teachers, staff and administration.

SRP
Our school is expanding the safety program to include the Standard Response Protocol (SRP). The SRP is based on these four actions. Lockout, Lockdown, Evacuate and Shelter. In the event of an emergency, the action and appropriate direction will be called on the PA.

LOCKOUT - "Secure the Perimeter"
LOCKDOWN - "Locks, Lights, Out of Sight"
EVACUATE - "To the Announced Location"
SHELTER - "For a Hazard Using a Safety Strategy"

TRAINING
Please take a moment to review these actions. Students and staff will be trained and the school will drill these actions over the course of the school year. More information can be found at <http://iloveuguy.org>


**LOCKOUT
SECURE THE PERIMETER**
Lockout is called when there is a threat or hazard outside of the school building.

STUDENTS:

- Return to inside of building
- Do business as usual

TEACHERS

- Recover students and staff from outside building
- Increased situational awareness
- Do business as usual
- Take roll, account for students




**LOCKDOWN
LOCKS, LIGHTS, OUT OF SIGHT**
Lockdown is called when there is a threat or hazard inside the school building.

STUDENTS:

- Move away from sight
- Maintain silence

TEACHERS:

- Lock classroom door
- Lights out
- Move away from sight
- Maintain silence
- Wait for First Responders to open door
- Take roll, account for students




**EVACUATE
TO A LOCATION**
Evacuate is called to move students and staff from one location to another.

STUDENTS:

- Bring your phone
- Leave your stuff behind
- Form a single file line
- Show your hands
- Be prepared for alternatives during response.

TEACHERS:

- Grab roll sheet if possible
- Lead students to Evacuation Location
- Take roll, account for students



**SHELTER
FOR A HAZARD USING SAFETY STRATEGY**
Shelter is called when the need for personal protection is necessary.

SAMPLE HAZARDS:

- Tornado
- Hazmat

SAMPLE SAFETY STRATEGIES:


- Evacuate to shelter area
- Seal the room


STUDENTS:

- Appropriate hazards and safety strategies


TEACHERS:

- Appropriate hazards and safety strategies
- Take roll, account for students





© Copyright 2009-2014, All rights reserved. The "I Love U Guys" Foundation, Bailey, CO 80421. SRP, The Standard Response Protocol and I Love U Guys are Trademarks of The "I Love U Guys" Foundation and may be registered in certain jurisdictions. This material may be duplicated for distribution by recognized schools, districts, departments and agencies. SRP Handout for K12 | Version 2.0 | 01/08/2013 | Revised: 01/08/2013 | <http://iloveuguy.org> |



HISTORICAL OCCURRENCES

For a table of historical weather hazard occurrences according to the National Climatic Data Center, please see the Participant Section for the Village of Arlington.

RISK ASSESSMENT

Hazard Identification

The following table is a localized risk assessment of hazards identified specifically for the district. Refer to the beginning of *Section Seven: Participant Sections* for a detailed explanation as to what this methodology is and why certain hazards did not pose a significant enough threat and were eliminated from detailed discussion.

Table APS.5: Risk Assessment

HAZARD TYPE	PREVIOUS OCCURRENCE Yes/No	SPECIFIC CONCERNS IDENTIFIED
Agricultural Animal Disease	N/A	N/A
Agricultural Plant Disease	N/A	N/A
Chemical Spills (Fixed Site)	No	None
Chemical Spills (Transportation)	No	None
Civil Disorder	No	None
Dam Failure	No	None
Drought	Yes	None
Earthquakes	No	None
Extreme Heat	Yes	None
Flooding*	Yes	Property damage
Grass/Wildfires	Yes	None
Hail*	No	Property damage
High Wind	Yes	Power outages
Landslides	No	None
Levee Failure	No	None
Radiological Incident (Fixed Site)	No	None
Radiological Incident (Transportation)	No	None
Severe Thunderstorms*	Yes	Power outages; property damage
Severe Winter Storms*	Yes	Power outages; property damage; cancelled classes
Terrorism	No	None
Tornados*	Yes	Student and staff safety; property damage
Urban Fire	No	None

**Identified by the local planning team as a top concern for the district*

For more information regarding these area wide hazards, please see *Section Four: Risk Assessment*. The following discussion provides specific information for the school district that is relevant to each hazard. Only hazards identified either as a concern to the district by the local planning team or based on the occurrence and risk of the hazard to the district are discussed in detail below.

Hail

Hail from severe thunderstorms is a common occurrence across the region and was identified as a top concern for the district. There have not been any reported damages to facilities in the school district or in the Village of Arlington from hail. However, hail sizes of over an inch to 2.50 inches or larger can cause significant damages to roofs, windows, vehicles, and siding especially when the hail is wind-driven. The school skylights and the roof have been damaged by hail in June 2014.

Implemented mitigation projects:

- School facility is insured for hail damaged

Identified mitigation projects:

- Install hail resistant roofing
- Promote first aid training

Flooding

Flooding is a concern for the school district. The Village of Arlington does have a one percent floodplain identified due to the proximity of Bell Creek to the east and the Elkhorn River to the west of the village. The school building is located in the northwest portion of the community and is not located in a floodplain. However, the storage shed on the athletic field has been flooded twice in the past. However, the district recently fixed the grading around the school and completed some cement surfacing to alleviate the flooding. There are also drainage issues in the school courtyard and there were some flooding issues in 2012-2013. The doors are now sealed that lead out to the courtyard, and that has fixed leaking into the building from the courtyard.

Implemented mitigation projects:

- Doors sealed in courtyard to reduce leaking into building
- Grading and cement improvements to alleviate flooding on school grounds

Identified mitigation projects:

- Improve emergency communications

Severe Thunderstorms

Severe thunderstorms was identified as a top concern for the school district. The combination of high winds, heavy rain, lightning, and hail can cause significant damages to district property. A severe thunderstorm on June 1, 2010 caused minor structural damage and down tree limbs in the Village of Arlington from 60 mph wind gusts.

Implemented mitigation projects:

- Weather radio available

Identified mitigation projects:

- Obtain back-up power generator

Severe Winter Storms

Winter storms are a regular part of the climate for the region and can cause road closures, dangerously low temperatures, and power outages. The winter of 2009-2010 was especially harsh for the area. The Christmas Winter Storm of 2009 brought over a foot of snow and high winds gusting over 40 mph. These winds in combination with heavy snow produced widespread low visibilities and extremely low wind chills.

Implemented mitigation projects:

- School is closed during dangerous winter storms

Identified mitigation projects:

- Obtain back-up power generator

Tornados

Although school facilities have not been directly impacted by a tornado, the Village of Arlington has had three tornados since 1996 that have affected the edge of the village or nearby. On June 20, 1996, an F1 tornado touched down north of the village and damaged a church as well as eight nearby farmsteads. Damages were estimated at \$300,000. A brief F0 tornado caused tree damage and damaged 4 outbuildings outside of Arlington. The third tornado was also an F1 and affected areas north of Arlington. Farm houses and barns, outbuildings, power lines, and trees were all damaged along its path, and total damage cost was estimated at \$600,000. The school district is concerned with the safety of students and staff in the event of a tornado directly impacting their school, particularly during the school year.

Implemented mitigation projects:

- Tornado drills twice per year
- Utilize the SRP model

Identified mitigation projects:

- Obtain back-up power generator

ADMINISTRATION/CAPABILITY ASSESSMENT

The school district has a superintendent, two principals, one assistant principal, and supportive staff. The school board is made up of an eight member panel. The district also has a number of additional departments and staff that may be available to implement hazard mitigation initiatives. They include:

- Bookkeeper/District Treasurer
- Student Services Coordinator
- Technology
- Custodians
- Nurse
- Maintenance
- Buildings and Grounds

PLAN INTEGRATION

Arlington Public Schools maintain and review their Emergency Response Manual every year. The plan outlines the responsibilities of the Crisis Team as well as procedures for the following:

- Emergency evacuations
- Lockouts
- Lockdowns
- Bomb threats
- Intruder or hostage situation
- Bus situations
- Chemical spills

The plan was to be updated in the fall of 2015.

MITIGATION STRATEGY

New Mitigation Actions

Description	Back-up Power Generator
Analysis	Provide a portable or stationary source of backup power to redundant power supplies, municipal wells, lift stations, and other critical facilities and shelters.
Goal/Objective	Goal 2/ Objective 2.2
Hazard(s) Addressed	All hazards
Estimated Cost	\$50,000+
Funding	General budget, HMGP, PDM
Timeline	2-5 years
Priority	Medium
Lead Agency	Maintenance
Status	Not yet started

Description	Emergency Communications
Analysis	Establish an action plan to improve communication between schools and other government agencies to better assist students and staff during and following emergencies. Establish inner-operable communications. Van and bus radios are especially needed.
Goal/Objective	Goal 1/ Objective 1.4
Hazard(s) Addressed	All hazards
Estimated Cost	\$2,000/unit
Funding	General budget, Homeland Security
Timeline	Ongoing
Priority	High
Lead Agency	Safety Committee
Status	Ongoing

Description	Warning Systems
Analysis	Install new fire alarm system with strobe lights and warning sounds.
Goal/Objective	Goal 1/ Objective 1.4
Hazard(s) Addressed	Fire
Estimated Cost	Unknown
Funding	General budget
Timeline	2-5 years
Priority	High
Lead Agency	Maintenance
Status	Not yet started

Description	Hail Resistant Roofing
Analysis	Encourage the use of hail resistant roofing for any new construction or retrofit.
Goal/Objective	Goal 1/ Objective 1.4
Hazard(s) Addressed	Hail, Severe Thunderstorms, High Winds
Estimated Cost	Varies
Funding	General budget
Timeline	2-3 years
Priority	High
Lead Agency	Maintenance
Status	Not yet started

Description	Install Vehicular Barriers
Analysis	Install vehicular barriers to protect school facilities where possible.
Goal/Objective	Goal 3/ Objective 3.4
Hazard(s) Addressed	Terrorism, Civil Disorder, Transportation
Estimated Cost	Unknown
Funding	General budget
Timeline	5+ years
Priority	Low
Lead Agency	Maintenance
Status	Not yet started

Description	Promote First Aid
Analysis	Promote first aid training for all staff.
Goal/Objective	Goal 1/ Objective 1.5
Hazard(s) Addressed	All hazards
Estimated Cost	Staff Time
Funding	N/A
Timeline	Ongoing
Priority	High
Lead Agency	Safety Committee, School Nurse
Status	This is done annually.

Description	Security and Warning System
Analysis	Alert staff and/or police department when a door is left open after normal business hours to signal if someone broke in to the building.
Goal/Objective	Goal 1/ Objective 1.4
Hazard(s) Addressed	Terrorism, Civil Disorder
Estimated Cost	Unknown
Funding	General budget, Homeland Security
Timeline	5+ years
Priority	Low
Lead Agency	Superintendent
Status	Not yet started.