



Transportation Update

Ridership / Routes

- 10 daily routes
- 1 SpEd route
- Approximately 500 daily riders
- Average of 50 riders per route
- Approximately 25% of student population*
- 512 daily miles driven
- 86,000 miles per year

Excellence
Community
Innovative Learning
Communication
Citizenship

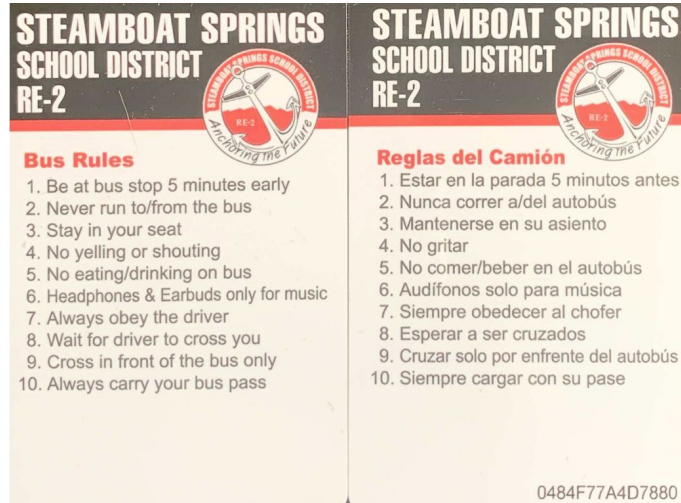
Activity Trips

- 437 YTD activity trips completed
- 555 estimated total trips for '24-25 school year
- Approximately 60K miles driven
- Added two new activity buses

Excellence
Community
Innovative Learning
Communication
Citizenship

RFID Cards

- Current status
- My Ride K-12 App



**Excellence
Community
Innovative Learning
Communication
Citizenship**

EPA / CDPHE Grant Update

- 3 Type D / 2 Type A EV school buses ordered
- 3 44kW DCFC stations ordered
- Projected implementation by September 2025
- \$2,543,000 total funding
- Existing routes will be operated by EV's for '25-26

**Excellence
Community
Innovative Learning
Communication
Citizenship**

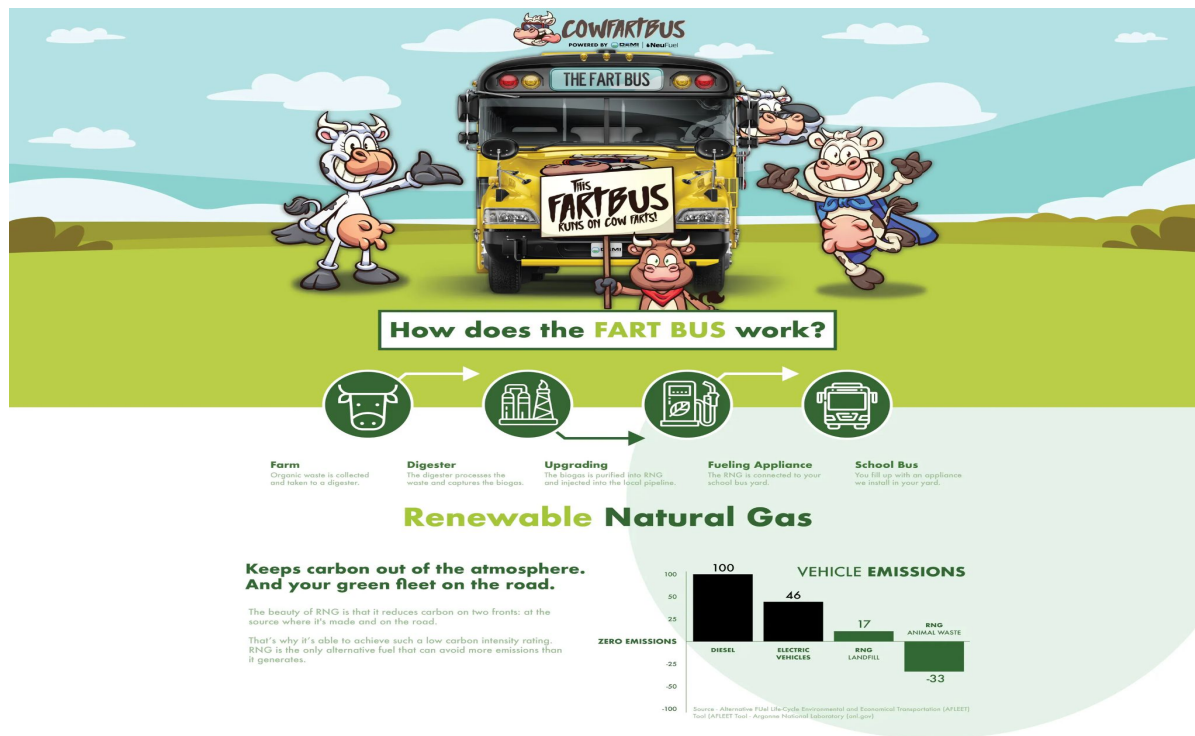
Future

- Stop Arm Extensions - Illegal Passing Prevention



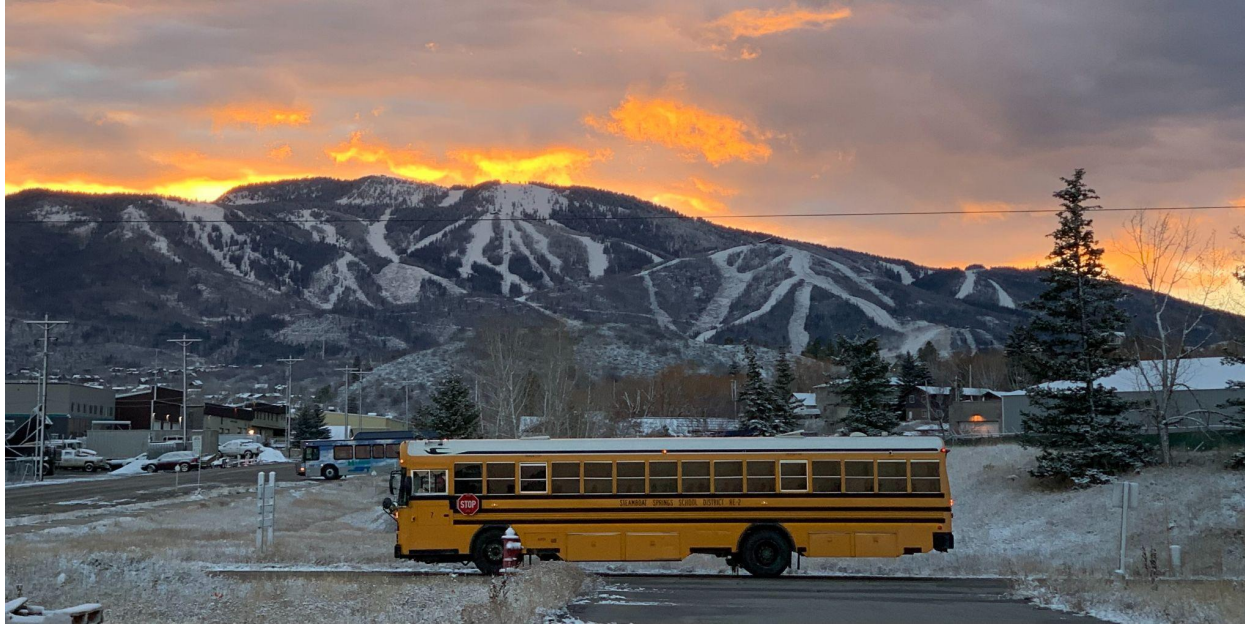
Excellence
Community
Innovative Learning
Communication
Citizenship

Future



Excellence
Community
Innovative Learning
Communication
Citizenship

Questions!



Excellence
Community
Innovative Learning
Communication
Citizenship