

DIMENSIONS ARE APPROXIMATE
OVERALL HEIGHT = 112"
OVERALL WIDTH WITH RUB
RAILS & FENDERETTES = 98"

AC CONDENSER WITH SECOND
ENGINE DRIVEN COMPRESSOR

(7) WHELEN M9 SUPER LED WARNING LIGHTS
RED/BLUE/RED/WHITE/RED/BLUE/RED
WITH CLEAR LENSES

(5) AMBER
MINI-LED MARKER LIGHTS

(3) WHELEN M7 SUPER LED
WARNING LIGHTS RED/WHITE/RED
WITH CLEAR LENSES

PRE WIRE OPTICOM

LOCKING, SLIDING
WINDOW IN CAB

OEM POWER
ADJUSTABLE
MIRRORS

FLASHING HEADLIGHTS W/
DAYTIME RUNNING LIGHTS

MINI-LED RUNNING
BOARD LIGHTS

(2) 100W SIREN
SPEAKERS IN THE BUMPER

(4) WHELEN ION SERIES
SUPER LED GRILLE
LIGHTS WITH CLEAR LENSES
TOP BLUE-RED
BOTTOM BLUE-RED
TO FLASH IN X-PATTERN

HIDDEN UNLOCK SWITCH
IN GRILLE AREA

THIS DRAWING IS FOR REPRESENTATIONAL PURPOSES ONLY. DETAILS ARE CONCEPTUAL AND ARE SUBJECT TO CHANGE DURING DESIGN AND CONSTRUCTION
DIMENSIONS ARE APPROXIMATE UNLESS NOTED OTHERWISE TO MEET A SPECIFIC CUSTOMER NEED.

NCA
SELECT STOCK



FRONT EXTERIOR VIEW
CHIEF XL-1/F450-GAS CHASSIS

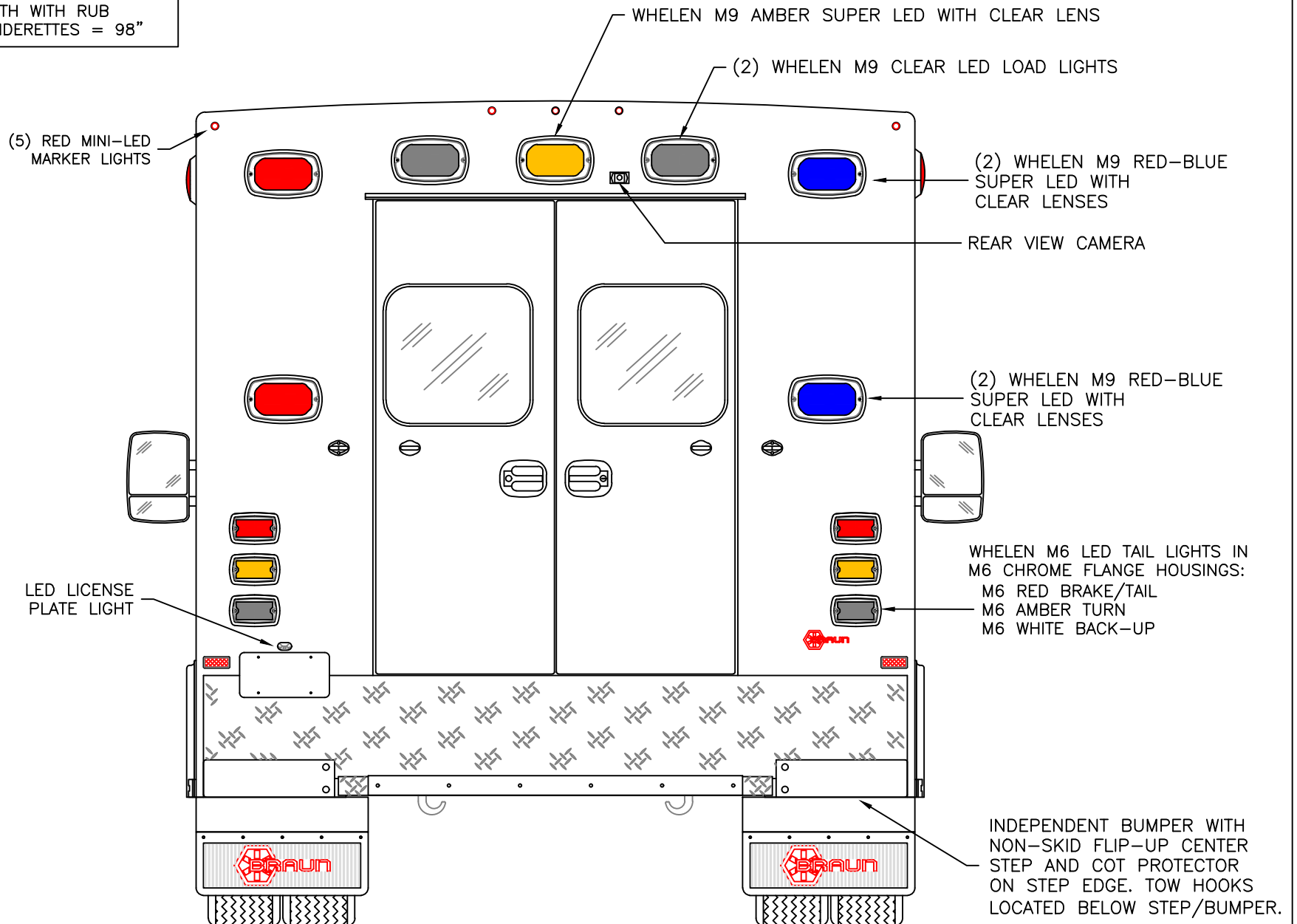
DATE:
8-14-24
DWG.
BT

DRAWING NO.
CPQ# 10878
REV.
NR
SELECT-1

APPROVAL SIGNATURE:

DATE:

DIMENSIONS ARE APPROXIMATE
OVERALL HEIGHT = 112"
OVERALL WIDTH WITH RUB
RAILS & FENDERETTES = 98"



THIS DRAWING IS FOR REPRESENTATIONAL PURPOSES ONLY. DETAILS ARE CONCEPTUAL AND ARE SUBJECT TO CHANGE DURING DESIGN AND CONSTRUCTION
DIMENSIONS ARE APPROXIMATE UNLESS NOTED OTHERWISE TO MEET A SPECIFIC CUSTOMER NEED.

NCA
SELECT STOCK



REAR EXTERIOR VIEW
CHIEF XL-1/F450-GAS CHASSIS

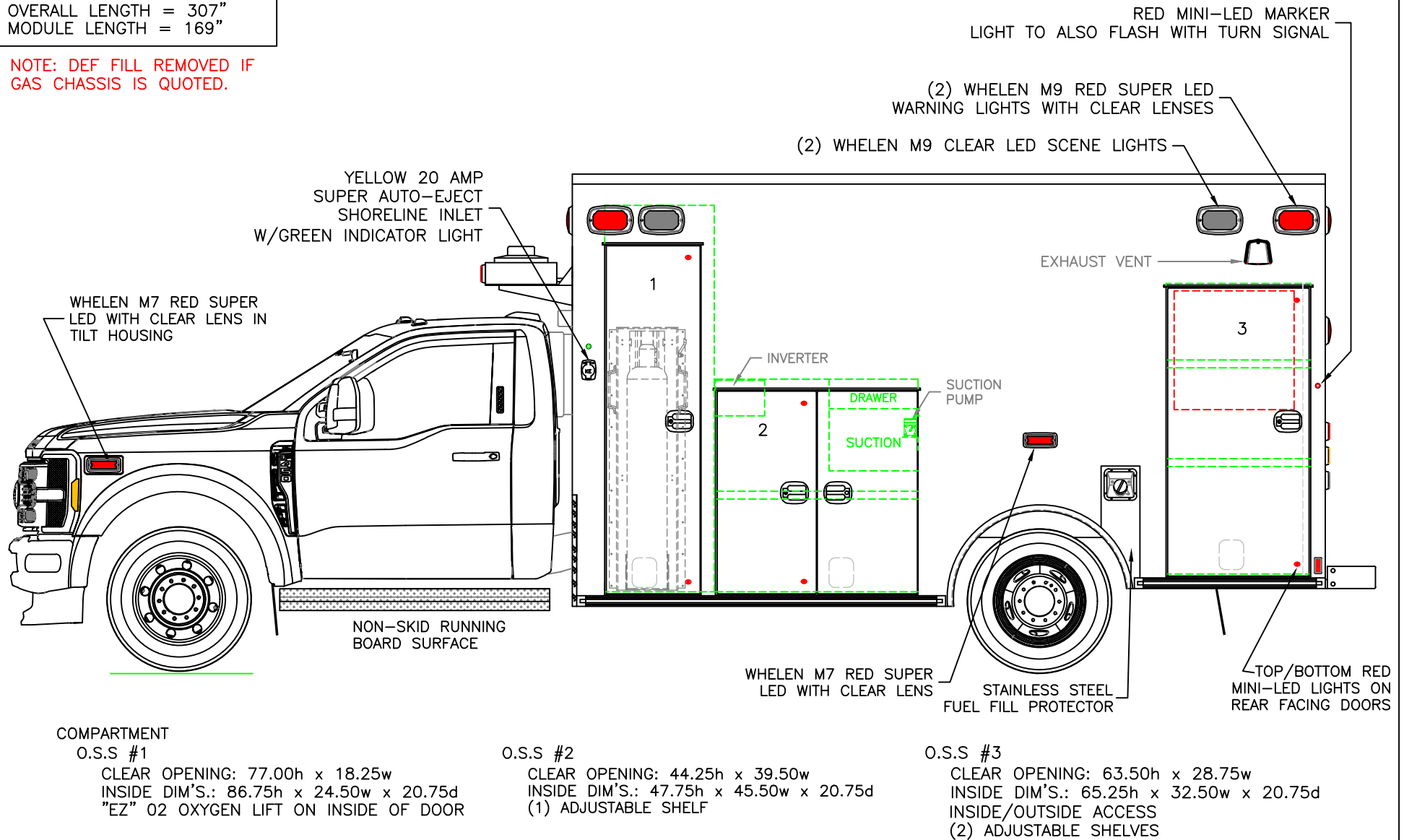
1:16

DATE:
8-14-24
DWG. BT
REV. NR

DRAWING NO.
CPQ# 10878
SELECT-2

DIMENSIONS ARE APPROXIMATE
OVERALL HEIGHT = 112"
OVERALL LENGTH = 307"
MODULE LENGTH = 169"

NOTE: DEF FILL REMOVED IF
GAS CHASSIS IS QUOTED.



OSS COMPARTMENTS TO HAVE RIDGEBACK STRIP LIGHTS

THIS DRAWING IS FOR REPRESENTATIONAL PURPOSES ONLY. DETAILS ARE CONCEPTUAL AND ARE SUBJECT TO CHANGE DURING DESIGN AND CONSTRUCTION
DIMENSIONS ARE APPROXIMATE UNLESS NOTED OTHERWISE TO MEET A SPECIFIC CUSTOMER NEED.

NCA
SELECT STOCK



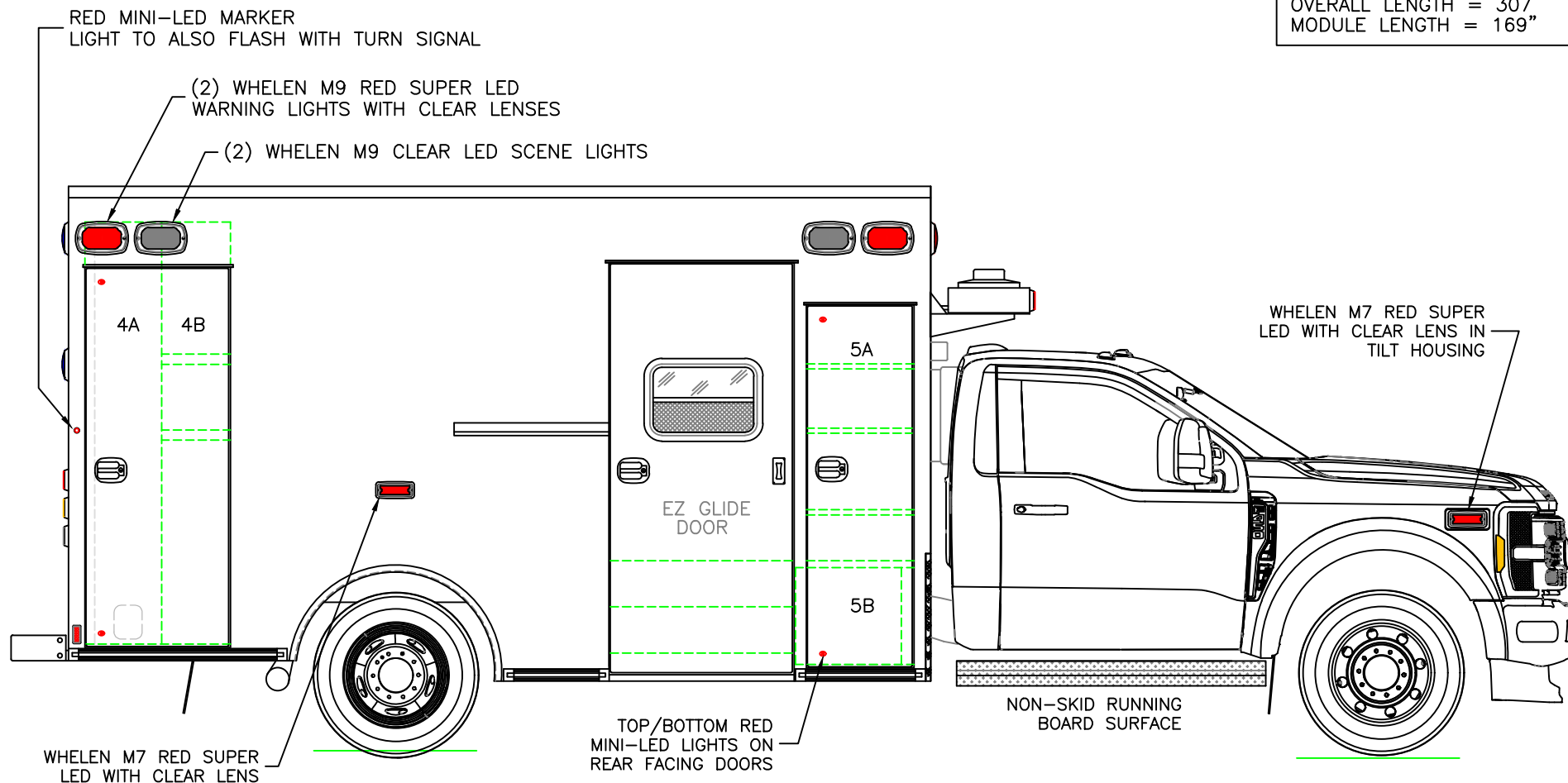
STREETSIDE EXTERIOR VIEW
CHIEF XL-I/F450-GAS CHASSIS

1:30

DATE:
8-14-24
DWG:
BT
REV.
NR

DRAWING NO.
CPQ# 10878
SELECT-3

DIMENSIONS ARE APPROXIMATE
 OVERALL HEIGHT = 112"
 OVERALL LENGTH = 307"
 MODULE LENGTH = 169"



COMPARTMENT
 O.S.S #4

CLEAR OPENING: 73.00h x 24.75w
 INSIDE DIM'S. 4A: 82.75h x 15.00w x 20.75d
 BACKBOARD/SCOOP STORAGE
 INSIDE DIM'S. 4B: 82.75h x 13.50w x 20.75d
 (2) ADJUSTABLE SHELVES WITH INSIDE/OUTSIDE ACCESS

O.S.S #5

CLEAR OPENING: 69.50h x 17.50w
 INSIDE DIM'S. 5A: SEE PARTITION INTERIOR VIEW
 INSIDE/OUTSIDE STORAGE WITH (3) ADJUSTABLE SHELVES
 INSIDE DIM'S. 5B: 19.00h x 20.75w x 18.00d

OSS COMPARTMENTS TO HAVE RIDGEBACK STRIP LIGHTS

THIS DRAWING IS FOR REPRESENTATIONAL PURPOSES ONLY. DETAILS ARE CONCEPTUAL AND ARE SUBJECT TO CHANGE DURING DESIGN AND CONSTRUCTION
 DIMENSIONS ARE APPROXIMATE UNLESS NOTED OTHERWISE TO MEET A SPECIFIC CUSTOMER NEED.

NCA
 SELECT STOCK

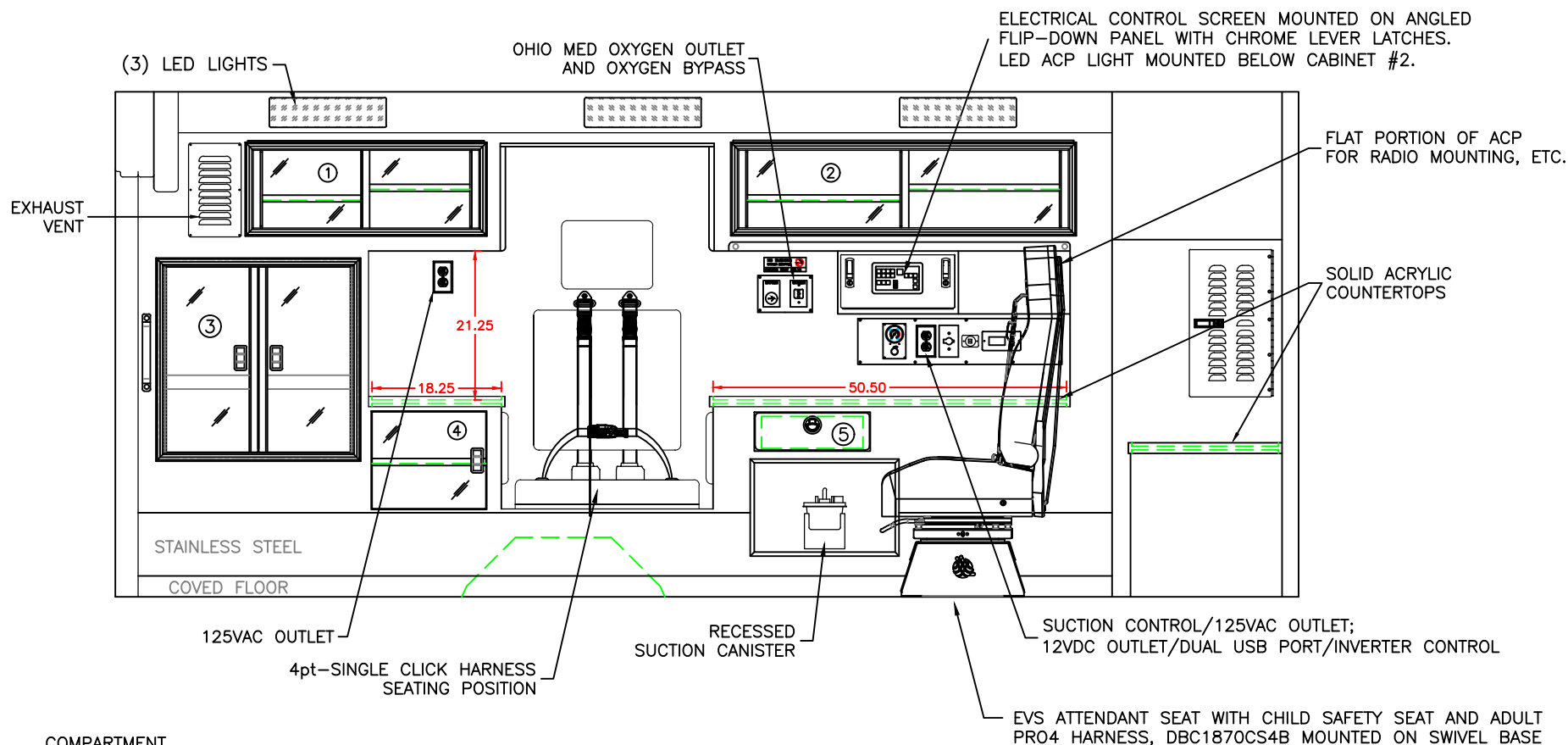


CURBSIDE EXTERIOR VIEW
 CHIEF XL-I/F450-GAS CHASSIS

1:30

DATE:
 8-14-24
 DWG. BT
 REV. NR

DRAWING NO.
 CPQ# 10878
 SELECT-4



COMPARTMENT

#1 DOOR OPENING: 11.00h x 32.25w

INSIDE DIMS: 13.25h x 34.00w x 17.25d

(1) ADJ SHELF EACH SIDE OF CENTER DIVIDER
SLIDING POLYCARBONATE DOORS

TOTAL CABINET WEIGHT RATING = 25 lbs.

#2 DOOR OPENING: 11.00h x 47.00w

INSIDE DIMS: 13.25h x 48.75w x 17.25d

(1) ADJ SHELF EACH SIDE OF CENTER DIVIDER
SLIDING POLYCARBONATE DOORS

TOTAL CABINET WEIGHT RATING = 25 lbs.

#3 DOOR OPENING: 26.50h x 26.75w

INSIDE DIMS: O.S.S. #3

HINGED POLYCARBONATE DOORS WITH FULL LENGTH
HANDLES AND CENTER SQUEEZE LATCHES

TOTAL CABINET WEIGHT RATING = 40 lbs.

#4 DOOR OPENING: 14.00h x 16.50w

INSIDE DIMS: 14.00h x 16.50w x 17.25d

(1) ADJUSTABLE SHELF

HINGED POLYCARBONATE DOOR

CENTER SQUEEZE LATCH

TOTAL CABINET WEIGHT RATING = 10 lbs.

#5 PULL-OUT DRAWER WITH HINGED ACRYLIC WRITING SURFACE

INSIDE DIMS: 4.50h x 14.50w x 13.25d

LOCKING STAINLESS STEEL FLUSH PULL LATCH

TOTAL DRAWER WEIGHT RATING = 10 lbs.

#1 AND #2 WITH RESTOCKING FRAMES.

THIS DRAWING IS FOR REPRESENTATIONAL PURPOSES ONLY. DETAILS ARE CONCEPTUAL AND ARE SUBJECT TO CHANGE DURING DESIGN AND CONSTRUCTION
DIMENSIONS ARE APPROXIMATE UNLESS NOTED OTHERWISE TO MEET A SPECIFIC CUSTOMER NEED.

NCA
SELECT STOCK

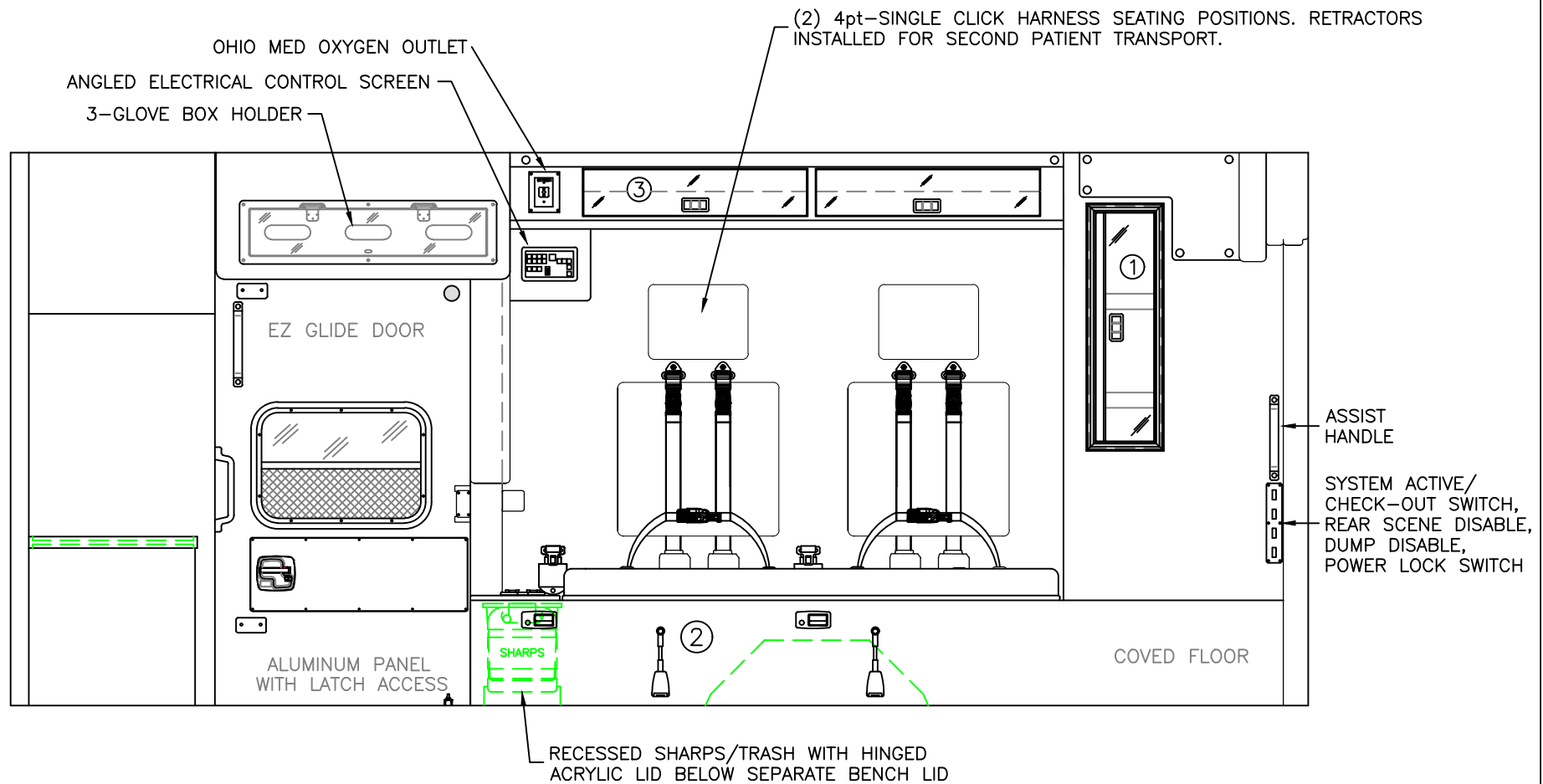


STREETSIDE INTERIOR VIEW
CHIEF XL-I

1:22

DATE:	8-14-24
DWG.	BT
REV.	NR

DRAWING NO.	CPQ# 10878
	SELECT-5



COMPARTMENT

#1 DOOR OPENING: 30.00h x 7.25w
 INSIDE/OUTSIDE ACCESS TO OSS #4B
 HINGED POLYCARBONATE DOOR WITH FULL LENGTH
 HANDLE AND CENTER SQUEEZE LATCH
 TOTAL CABINET WEIGHT RATING = 25 lbs.

#2 INSIDE DIM'S: 14.25h x 77.00w x 21.00d

#3 DOOR OPENINGS: 6.25h x 29.25w
 INSIDE DIMS: 6.25h x 29.25w x 10.25d
 TOP HINGED POLYCARBONATE DOORS WITH
 CENTER SQUEEZE LATCHES
 43" MINIMUM HEADROOM BELOW THE CABINET
 TOTAL CABINET WEIGHT RATING = 10 lbs. EACH

THIS DRAWING IS FOR REPRESENTATIONAL PURPOSES ONLY. DETAILS ARE CONCEPTUAL AND ARE SUBJECT TO CHANGE DURING DESIGN AND CONSTRUCTION
 DIMENSIONS ARE APPROXIMATE UNLESS NOTED OTHERWISE TO MEET A SPECIFIC CUSTOMER NEED.

NCA
 SELECT STOCK

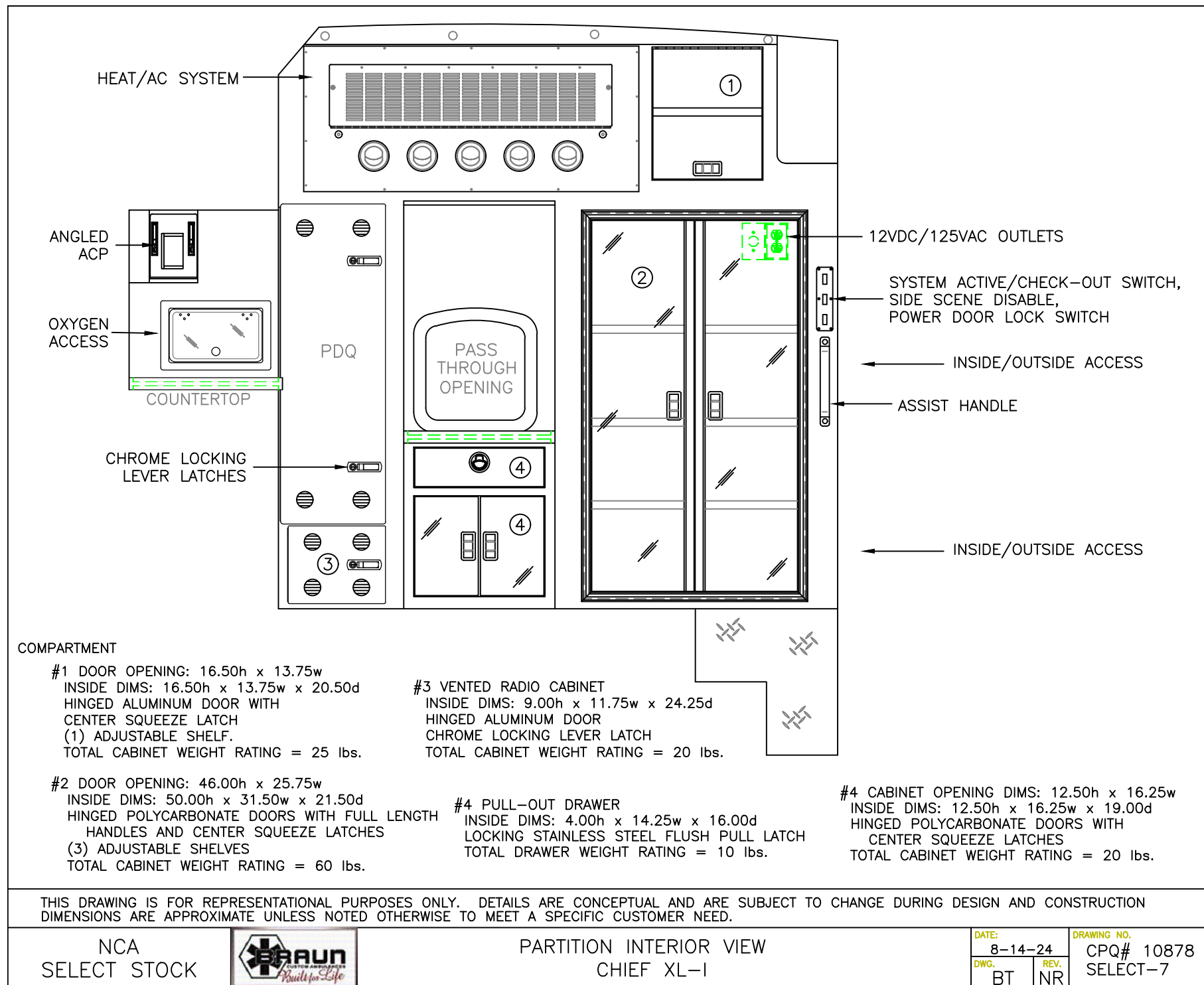


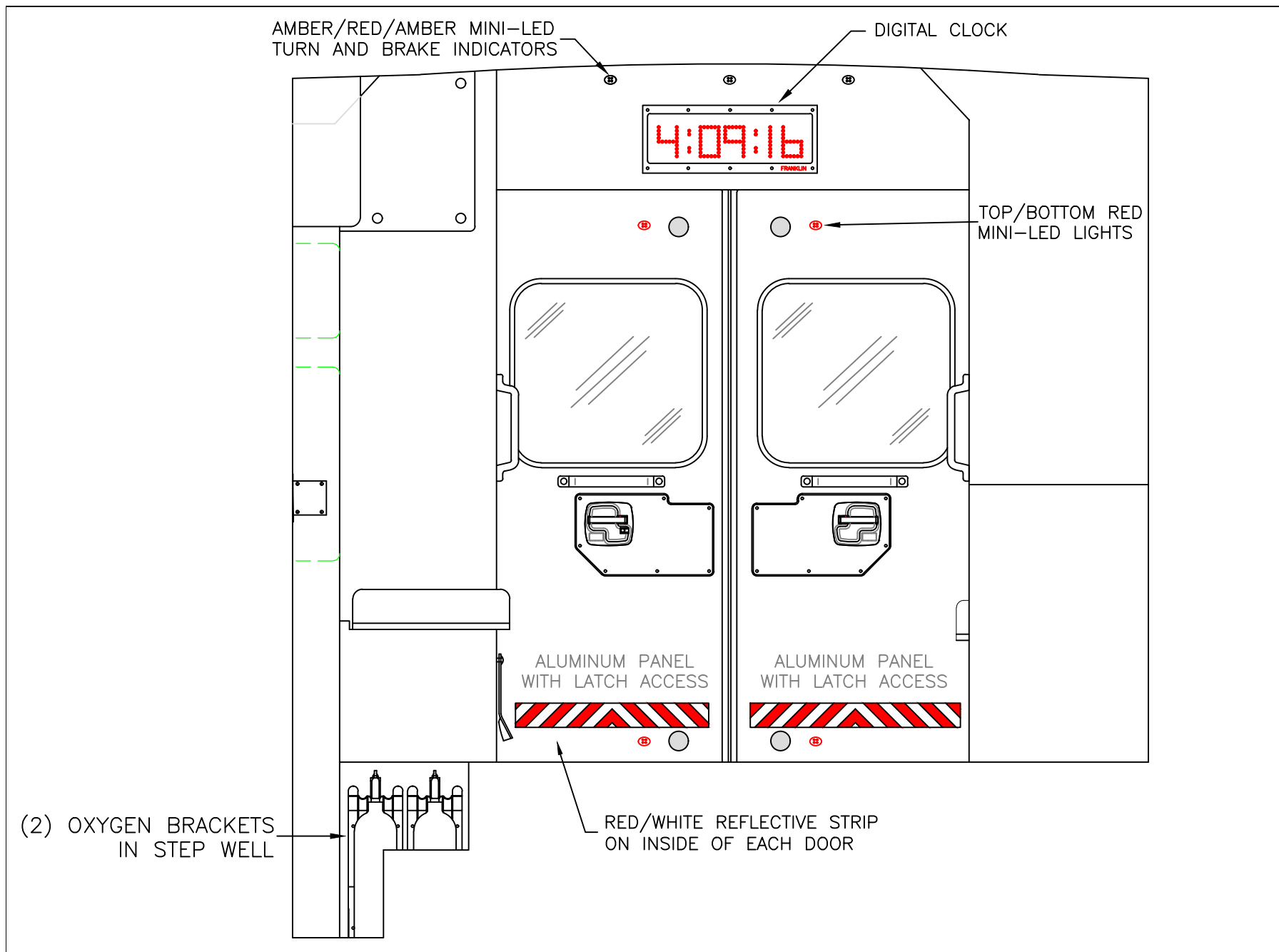
CURBSIDE INTERIOR VIEW
 CHIEF XL-I

1:20

DATE:	8-14-24
DWG.	BT
REV.	NR

DRAWING NO.	CPQ# 10878
	SELECT-6





THIS DRAWING IS FOR REPRESENTATIONAL PURPOSES ONLY. DETAILS ARE CONCEPTUAL AND ARE SUBJECT TO CHANGE DURING DESIGN AND CONSTRUCTION
 DIMENSIONS ARE APPROXIMATE UNLESS NOTED OTHERWISE TO MEET A SPECIFIC CUSTOMER NEED.

NCA
 SELECT STOCK



REAR INTERIOR VIEW
 CHIEF XL-I

1:12

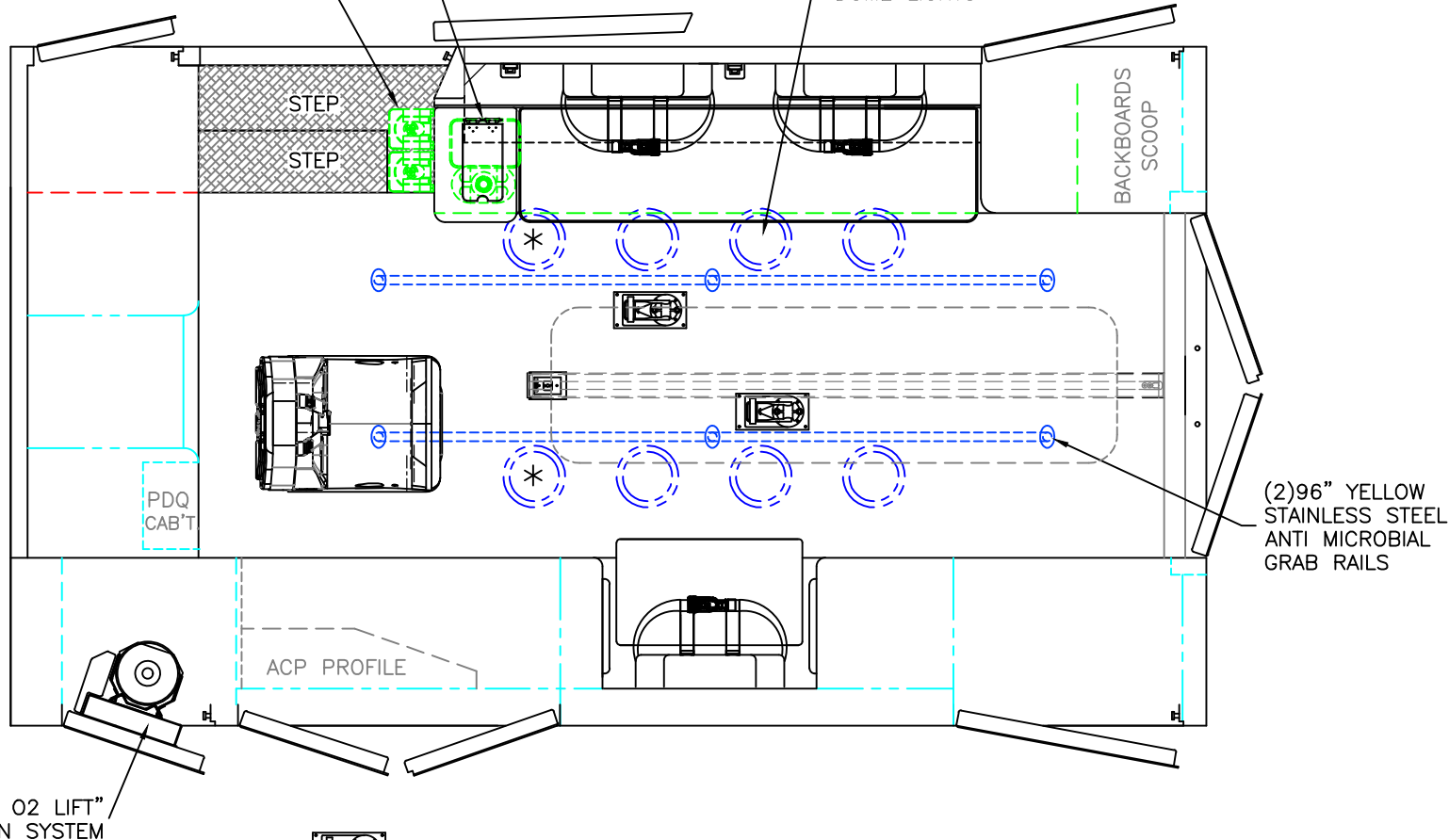
DATE:	8-14-24
DWG.	REV.
BT	NR

DRAWING NO.	CPQ# 10878
	SELECT-8

RECESSED SHARPS/TRASH WITH HINGED
ACRYLIC LID BELOW SEPARATE BENCH LID

(2) OXYGEN BOTTLE BRACKETS

(8) LED
DOME LIGHTS



= (2) RECESSED CEILING IV HANGER LOCATIONS



= (1) CEILING OXYGEN OUTLET

*

(2) ANTENNA BASES LOCATED OUTBOARD OF
DOME LIGHTS WITH COAX SERVICE LOOP

FLOOR PLATE AND 12V PRE-WIRE FOR STRYKER POWERLOAD COT
SYSTEM IN CENTER POSITION. COT OUTLINE SHOWN FOR REFERENCE ONLY.

MODULE WIDTH = 96"
MODULE LENGTH = 169"
MODULE HEAD ROOM = 72"

THIS DRAWING IS FOR REPRESENTATIONAL PURPOSES ONLY. DETAILS ARE CONCEPTUAL AND ARE SUBJECT TO CHANGE DURING DESIGN AND CONSTRUCTION
DIMENSIONS ARE APPROXIMATE UNLESS NOTED OTHERWISE TO MEET A SPECIFIC CUSTOMER NEED.

NCA
SELECT STOCK



FLOOR INTERIOR VIEW
CHIEF XL-I

1:22

DATE:
8-14-24
DWG.
BT

DRAWING NO.
CPQ# 10878
REV.
NR
SELECT-9