

MCCOOK CITY COUNCIL

REGULAR MEETING

**Wednesday, April 30, 2025
12:00 PM - City Council Chambers**

Roll Call.

Open Meetings Act Announcement.

Call to Order.

Items.

1. Approve Plans and Specifications for a New Self Service Fuel Facility at the McCook Ben Nelson Regional airport and set the time and date to receive bids as 2:30 P.M. on May 20, 2025.

Adjournment.

**CITY MANAGER'S REPORT
APRIL 30, 2025 CITY COUNCIL MEETING**

ITEM: 1.

RECOMMENDATION:

APPROVE PLANS AND SPECIFICATIONS FOR A NEW SELF SERVICE FUEL FACILITY AT THE MCCOOK BEN NELSON REGIONAL AIRPORT AND SET THE TIME AND DATE TO RECEIVE BIDS AS 2:30 P.M. ON MAY 20, 2025.

BACKGROUND

The original layout for the new self service fuel facility as shown in the attached site plan was the recommended layout of the Airport Advisory Board. This layout was submitted to the FAA in December, 2024 and approved on a preliminary basis. Plans and specifications were prepared based on this layout and submitted for final approval to the FAA in late March. At that point everything was on schedule for the FAA funding deadline of the end of May, 2025.

During the FAA's plan review, a different section of the FAA determined this layout had what they felt were some safety issues and ultimately required a complete design change. This change required the elimination of the connection to Taxiway A and is represented in the second attached site plan. This revised layout was submitted and approved by the Airport Advisory Board on April 24th. This revised layout is represented in the plans being presented for approval.

The reason for this special meeting is to allow for three week's advertisement of the bid and then holding the bid opening in time for the FAA to approve the bid before the end of May, 2025.

The Engineer's Estimate is \$1,376,665.63 for this project. The City's share of this project is estimated at \$45,177.00.

FISCAL IMPACT: None.

APPROVALS:




Greg Wolford, W Design Associates

Date: 25 Apr 25



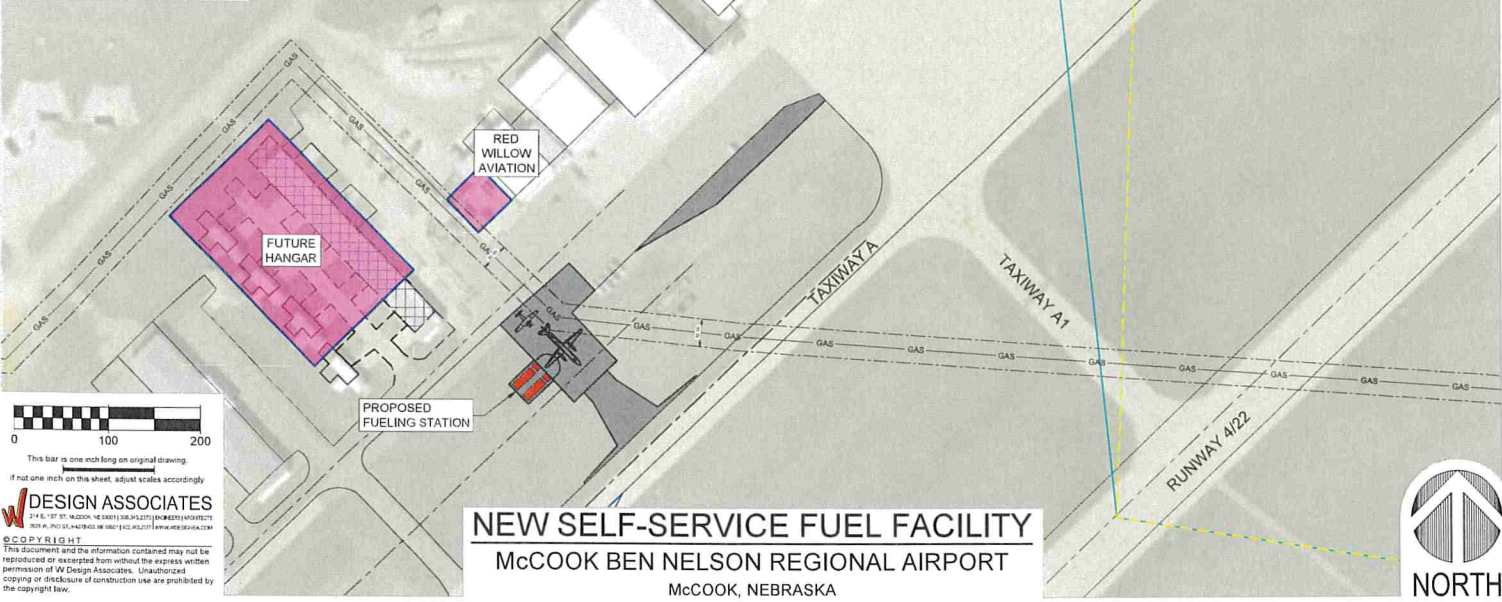
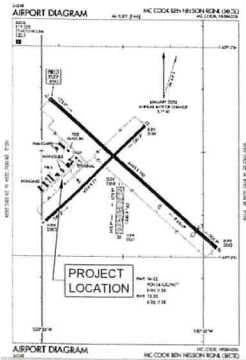
Kyle Potthoff, Public Works Director

Date: _____

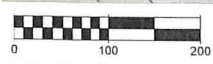


Nate Schneider, City Manager

Date: _____



**PRELIMINARY
NOT FOR
CONSTRUCTION**



This bar is one inch long on original drawing.
If not one inch on this sheet, adjust scales accordingly.

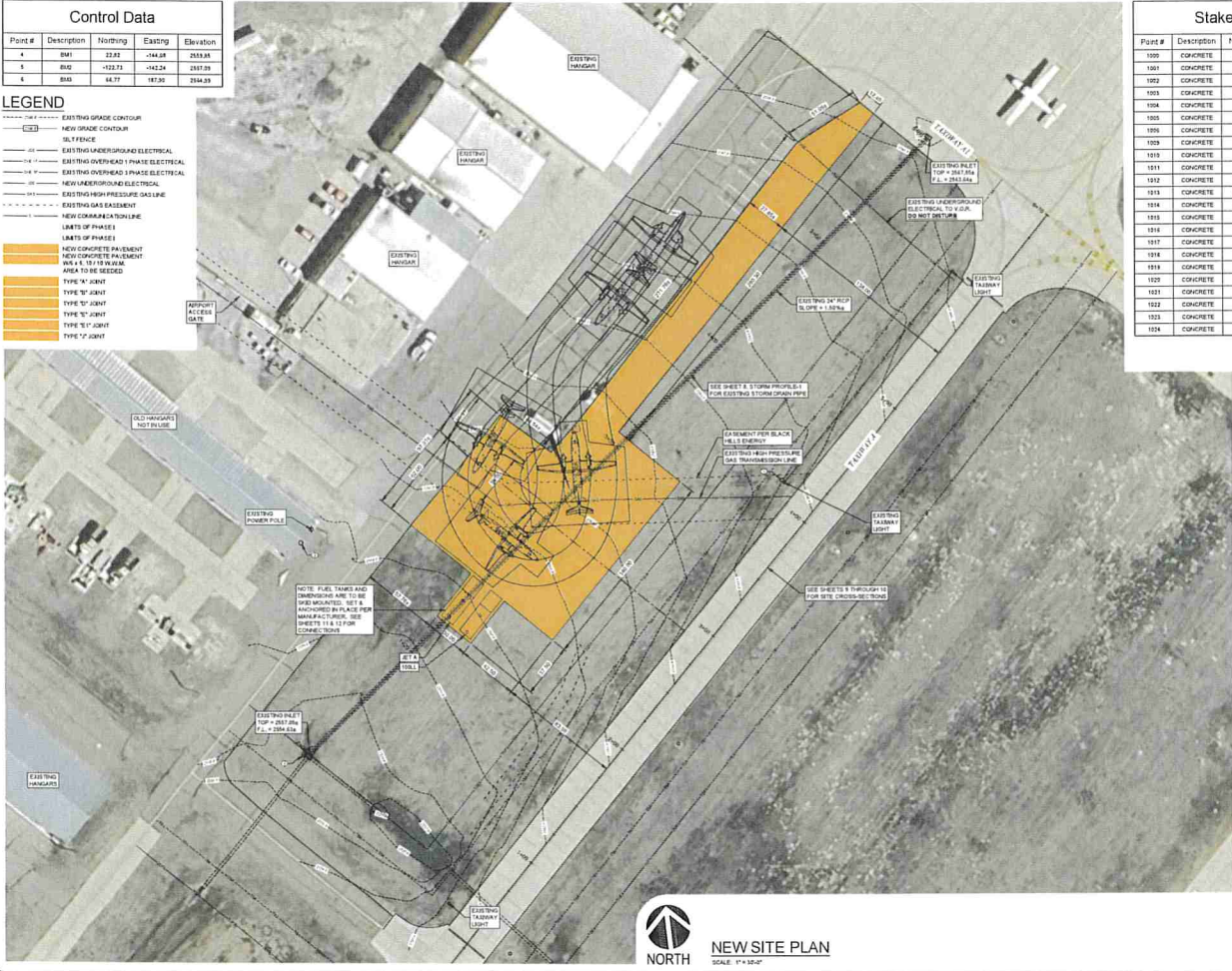
W DESIGN ASSOCIATES
214 E. 1ST ST. McCOOK, NE 68801 (308) 832-2277 WWW.WDESIGNASSOCIATES.COM
© C. O. P. R. & G. 2011
This document and the information contained may not be reproduced or excerpted from without the express written permission of W Design Associates. Unauthorized copying or disclosure of construction use are prohibited by the copyright law.

NEW SELF-SERVICE FUEL FACILITY
McCOOK BEN NELSON REGIONAL AIRPORT
McCOOK, NEBRASKA



Control Data				
Point #	Description	Northing	Eastng	Elevation
4	BMT	22.82	-144.28	2558.85
5	BMT	-122.73	-142.24	2557.29
6	BMT	44.77	187.30	2558.29

- LEGEND**
- EXISTING GRADE CONTOUR
 - NEW GRADE CONTOUR
 - SILT FENCE
 - EXISTING UNDERGROUND ELECTRICAL
 - EXISTING OVERHEAD 1 PHASE ELECTRICAL
 - EXISTING OVERHEAD 3 PHASE ELECTRICAL
 - EXISTING UNDERGROUND ELECTRICAL
 - EXISTING HIGH PRESSURE GAS LINE
 - EXISTING GAS BASEMENT
 - NEW COMMERCIAL TRAILER
 - LIMITS OF PHASES
 - NEW CONCRETE PAVEMENT
 - NEW CONCRETE PAVEMENT AREA TO BE SEEDED
 - TYPE 'A' JOINT
 - TYPE 'B' JOINT
 - TYPE 'C' JOINT
 - TYPE 'D' JOINT
 - TYPE 'E' JOINT



Stakeout Data				
Point #	Description	Northing	Eastng	Elevation
1000	CONCRETE	33.26	211.54	2548.59
1001	CONCRETE	191.90	149.14	2545.59
1002	CONCRETE	134.18	73.00	2543.27
1003	CONCRETE	137.40	74.42	2543.27
1004	CONCRETE	89.33	25.20	2541.91
1005	CONCRETE	69.82	18.14	2541.75
1006	CONCRETE	23.51	68.27	2538.47
1007	CONCRETE	1.70	124.84	2544.32
1010	CONCRETE	29.27	164.40	2545.10
1011	CONCRETE	31.78	205.84	2545.57
1012	CONCRETE	71.80	227.21	2545.59
1013	CONCRETE	-144.20	33.54	2543.24
1014	CONCRETE	-143.68	32.50	2543.22
1015	CONCRETE	-25.47	64.20	2543.24
1016	CONCRETE	-43.87	63.52	2543.14
1017	CONCRETE	-15.24	57.44	2541.87
1018	CONCRETE	-4.79	44.32	2541.13
1019	CONCRETE	-16.82	21.34	2539.90
1020	CONCRETE	-14.24	-3.21	2539.90
1021	CONCRETE	-23.94	-23.49	2538.53
1022	CONCRETE	-37.28	-53.08	2538.53
1023	CONCRETE	2.16	-24.65	2539.90
1024	CONCRETE	18.26	-47.72	2540.44

NEW SITE PLAN
SCALE: 1" = 30'-0"

AIRPORT SELF-SERVICE FUEL FACILITY
MCCOOK BEN NELSON REGIONAL AIRPORT
AIP PROJECT NO. 3-31-0052-2021
MCCOOK, NEBRASKA

DESIGN ASSOCIATES
1000 S. 10TH STREET, SUITE 100
MCCOOK, NEBRASKA 68801
PH: 402-833-1111
WWW.DESIGNASSOCIATES.COM

**PRELIMINARY
NOT FOR CONSTRUCTION**

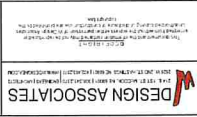
DATE	BY	SCALE

5

DATE: MAR, 2020

AIRPORT SELF-SERVICE FUEL FACILITY

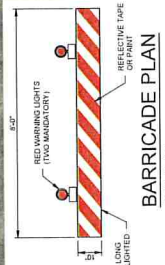
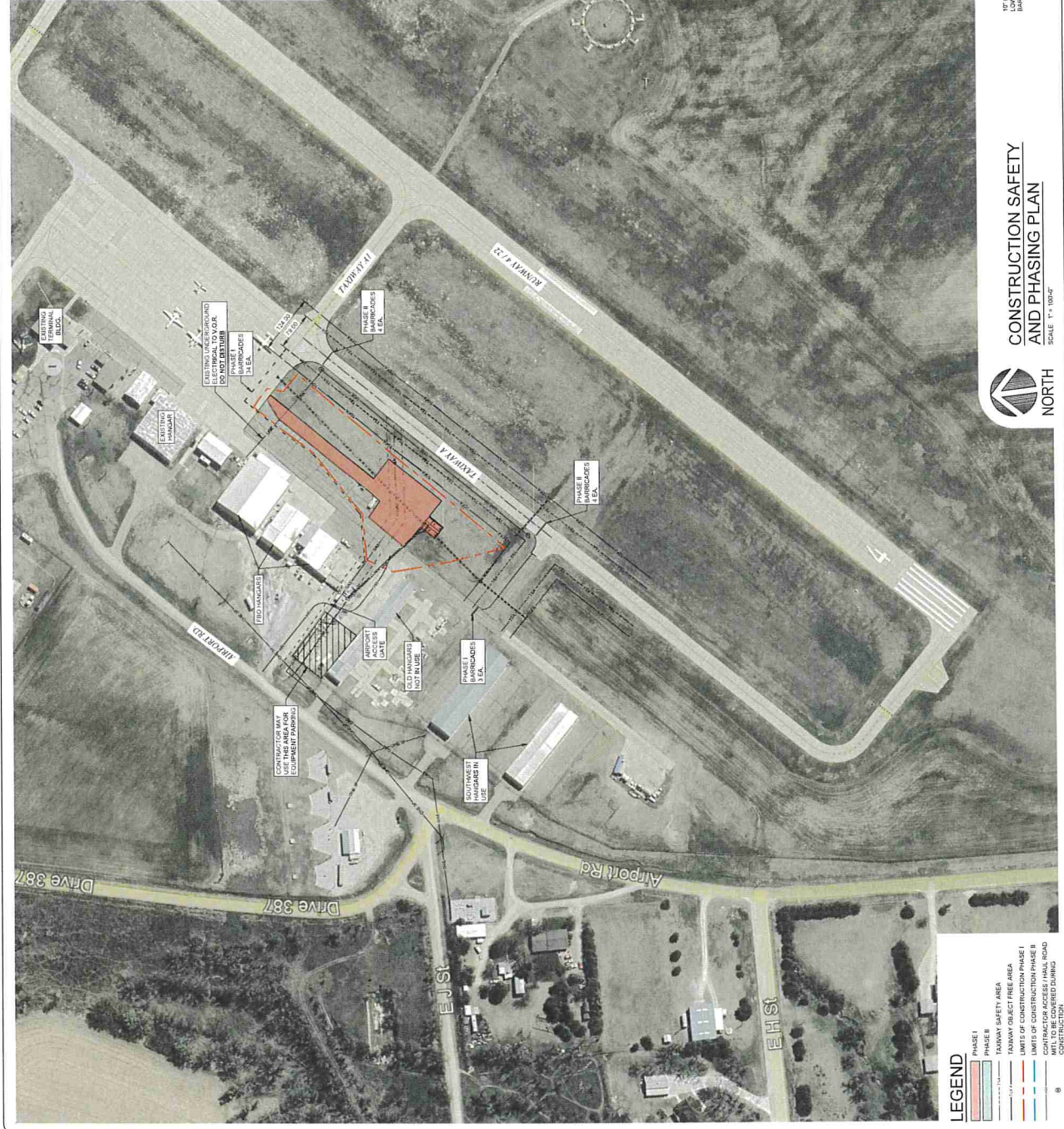
McCOOK BEN NELSON REGIONAL AIRPORT
AIP PROJECT NO. 3-31-0052-20/21
McCOOK, NEBRASKA



REVISIONS	
DATE	
BY	
CHKD	
APP'D	
DRWN	T.A.S.
DWG	11-24-2020 (V)

3.1
DATE: MAR. 2021

- ### SAFETY AND PHASING NOTES - GENERAL
- THE CONTRACTOR SHALL COORDINATE ALL NOTICES WITH THE CITY OF MCCOOK AND THE ENGINEER. THE AIRPORT WILL REMAIN OPEN DURING THIS PROJECT. ACCESS TO THE AIRPORT SHALL BE MAINTAINED AT ALL TIMES. THE CONTRACTOR SHALL MAINTAIN ACCESS TO THE AIRPORT AT ALL TIMES. THE CONTRACTOR SHALL MAINTAIN ACCESS TO THE AIRPORT AT ALL TIMES. THE CONTRACTOR SHALL MAINTAIN ACCESS TO THE AIRPORT AT ALL TIMES.
 - THE CONTRACTOR SHALL MAINTAIN ACCESS TO THE AIRPORT AT ALL TIMES. THE CONTRACTOR SHALL MAINTAIN ACCESS TO THE AIRPORT AT ALL TIMES. THE CONTRACTOR SHALL MAINTAIN ACCESS TO THE AIRPORT AT ALL TIMES. THE CONTRACTOR SHALL MAINTAIN ACCESS TO THE AIRPORT AT ALL TIMES.
 - THE CONTRACTOR SHALL MAINTAIN ACCESS TO THE AIRPORT AT ALL TIMES. THE CONTRACTOR SHALL MAINTAIN ACCESS TO THE AIRPORT AT ALL TIMES. THE CONTRACTOR SHALL MAINTAIN ACCESS TO THE AIRPORT AT ALL TIMES. THE CONTRACTOR SHALL MAINTAIN ACCESS TO THE AIRPORT AT ALL TIMES.
 - THE CONTRACTOR SHALL MAINTAIN ACCESS TO THE AIRPORT AT ALL TIMES. THE CONTRACTOR SHALL MAINTAIN ACCESS TO THE AIRPORT AT ALL TIMES. THE CONTRACTOR SHALL MAINTAIN ACCESS TO THE AIRPORT AT ALL TIMES. THE CONTRACTOR SHALL MAINTAIN ACCESS TO THE AIRPORT AT ALL TIMES.
- ### PHASE I
- THE PHASE I INCLUDES ALL ASPHALT EDGE BANKS, SUBGRADE GRADING AND COMPACTION, SURBASE INSTALLATION, ELECTRIC AND COMMUNICATIONS CONDUIT INSTALLATION AND PAINTING THE NEW SAFETY MEASURES INCLUDING INSTALLATION AND MAINTENANCE OF ALL BARRICADES AND MARKING THE PHASE I AREAS.
 - THE PHASE I SHALL BE CONSIDERED COMPLETE WHEN THE FANWAYS AND AIRROW ARE OPENED TO TRAFFIC. THE CONTRACTOR SHALL HAVE A MAXIMUM OF 30 WORKING DAYS TO COMPLETE PHASE I. IN NOVEMBER 2020.
- ### PHASE II
- THE PHASE II IS THE ACTUAL INSTALLATION AND COMMISSIONING OF THE NEW FUEL TANKS AND SYSTEMS WITH OWNER PROVIDED FUEL.
 - THE PHASE II SHALL BE COMPLETED WITHOUT CLOSING ANY FANWAYS. THE CONTRACTOR SETTING THE TANKS SHALL USE FLAGGERS TO DIRECT TRAFFIC AWAY FROM THE TANKS AND CHASE TRUCKS TO SET UP THE TANKS AND BE UPON COMPLETION OF THE TANKS ALL VEHICLES TO BE AWAY FROM THE TANKS.
 - THE PHASE II SHALL BE CONSIDERED COMPLETE WHEN THE NEBRASKA WEIGHITS AND MEASURES CERTIFICATION OF THE FUEL DISPENSING SYSTEMS WITH THE NEBRASKA WEIGHITS AND MEASURES IS COMPLETED. THE CONTRACTOR SHALL HAVE A MAXIMUM OF 30 WORKING DAYS TO COMPLETE PHASE II. IN NOVEMBER 2020.
- NOTE: PHASE II SHALL BE COMPLETED NO LATER THAN JULY 15, 2020.



CONSTRUCTION SAFETY AND PHASING PLAN
SCALE: 1" = 10'-0"



LEGEND

[Red outline]	PHASE I
[Blue outline]	PHASE II
[Green outline]	TAXIWAY SAFETY AREA
[Yellow outline]	TAXIWAY OBJECT FREE AREA
[Dashed line]	LIMITS OF CONSTRUCTION PHASE I
[Dotted line]	LIMITS OF CONSTRUCTION PHASE II
[Red dashed line]	CONTRACTOR ACCESS / HAUL ROAD
[Blue dashed line]	MIT TO BE COVERED DURING CONSTRUCTION

