



Strasburg School District 31-J

Agenda

SCHOOL DISTRICT BOARD OF EDUCATION

Regular Meeting

March 9, 2026 6:00 PM

Central Service Building, 2102 Wagner Street, Strasburg, CO 80136

Meeting is In-Person Audience may observe via Zoom

Join Zoom Meeting

<https://ecboces.zoom.us/j/98057290855>

Meeting ID: 980 5729 0855

Mission Statement (Policy AD):

Strasburg 31J will develop resourceful, responsible, and resilient engaged citizens who are empowered in a safe learning environment for all to achieve their full potential in an evolving world.

Board of Education

Michael Marrero, President

Diana Elliott, 1st Vice President

Mary O'Malley, 2nd Vice President

Courtney Vance, Secretary

Gema Gomez, Treasurer

Strasburg School Board strives to follow our guiding principles:

T – Transparency

R – Respect

U – Unity

T – Trust

H - Honesty

Board Procedures:

Board meeting time is dedicated to the mission and goals of the Strasburg 31J School District. Public opinion is valuable to the Board, and there is an opportunity during request from patrons to address the Board. Individuals who try to address the Board outside of public comment may not be recognized.

Members of the public who intend to offer public comment to the Board must sign up for comment before each Board meeting. The Board President has discretion to call on those who have signed up and set the order of speakers.

Presentations must be no more than three minutes.

- I. Opening of Meeting
Michael Marrero
 - a. Roll Call
 - b. Pledge of Allegiance
 - c. Adoption of the Minutes
 - d. Adoption of the Agenda
 - e. Land Acknowledgment
 - f. Board of Education Norms
- II. Celebrations
Kelle Bongard
 - a. Guitar Center Music Foundation Grant
 - b. National Honors Society
- III. Public Participation/General
Michael Marrero
 - a. Keegan - Student
- IV. Old Business
- V. New Business
- VI. Board Reports/Discussion
 - a. Board Feedback
Michael Marrero
 - b. Legislative and Colorado Association of School Boards
Diana Elliott
 - c. District Accountability Committee
Courtney Vance
 - d. East Central Board of Cooperative Educational Services
Diana Elliott
 - e. Chamber of Commerce
Gema Gomez
- VII. Superintendent Report/Discussion
Kelle Bongard
 - a. Demographer Study
 - b. Building Updates
 - c. Fiscal Updates
SOT Video
- [youtube.com/watch?reload=9&si=01vvxHbbhMxHBqoO&v=GO_jthQSHhk&feature=youtu.be](https://www.youtube.com/watch?reload=9&si=01vvxHbbhMxHBqoO&v=GO_jthQSHhk&feature=youtu.be)
 - d. 2026-2027 School Calendar
- VIII. Adoption of Consent Agenda
 - a. Personnel Matters Contract/Letter of Assignments – New Hires/Renewals
 - b. Personnel Matters Contract/Letter of Assignments – Reassignments
 - Cameron Schiller, SES Principal
 - Victoria Dickens, SHS Principal
 - Alaina Franklin, Central Registrar/Accounts Payable
 - c. Personnel Matters Contract/Letter of Assignments – Terminations/Resignations/Non-Renewals
 - Teresa Maximiliano, Paraprofessional
 - Trevor Lyons, HMS Math Teacher
 - Victoria Bomnskie, HMS Math Teacher
 - Scott Andrews, SHS Principal
 - d. Substitute List
 - e. 2026-2027 Calendar
- IX. Calendar Review
 - a. Meeting Times and Dates Review
 - **March 30** – Work Session (*Date changed due to Spring Break*)
 - **April 13** – Regular Board Meeting

- **April 27** – Work Session
- b. Future Agenda Topics
- X. Adjournment

THE STRASBURG SCHOOL DISTRICT RESPECTFULLY ACKNOWLEDGES THAT THE LAND ON WHICH WE GATHER AND LEARN IS THE TRADITIONAL AND ANCESTRAL HOMELANDS OF THE NORTHERN ARAPAHO AND CHEYENNE PEOPLE.

WE ARE COMMITTED TO GROWING AND DEEPENING OUR RELATIONSHIP WITH THE VIBRANT INDIGENOUS COMMUNITIES WHO CONTINUE TO THRIVE AND UPHOLD THEIR SACRED RELATION TO THIS LAND. WE EXTEND OUR RESPECT TO THE ELDERS OF THE PAST, THE PRESENT, AND FUTURE.



Strasburg School District 31J

| | |
|--------------------------|----------------|
| Policy: | File: |
| Board of Education Norms | BEN |
| Adopted: | Revision: |
| | September 2025 |

Board of Education Team Norms

Accountability to the Board and the Community:

- We communicate with respect, transparency, and openness, especially in challenging situations, while considering the appropriate context for feedback.
- We actively listen and engage with objectivity and without personal bias, ensuring that all voices are heard and respected.
- We support and promote board decisions collectively, address concerns directly with the involved individuals, and maintain mutual respect.

Commitment to the District's Strategic Plan:

- We embrace the school mission and advocate for all students, prioritizing the greater good of the district over personal agendas.
- We approach every issue with the same level of focus and dedication, believing in the potential of all students to achieve academic success.

Effective and Productive Meetings:

- We prioritize and attend all meetings consistently by being prepared, arriving ready to actively engage, contribute, and accomplish the work of the board, while staying focused, using time efficiently, and starting and ending on time.
- We ensure everyone has a voice and promote balanced discussions, ending each meeting with clear action items, timelines, and owners
- We adhere to established norms, speak up when deviations occur, and strive to make our meetings a space for meaningful and respectful dialogue.

Strasburg School District – Demographic and Enrollment Study



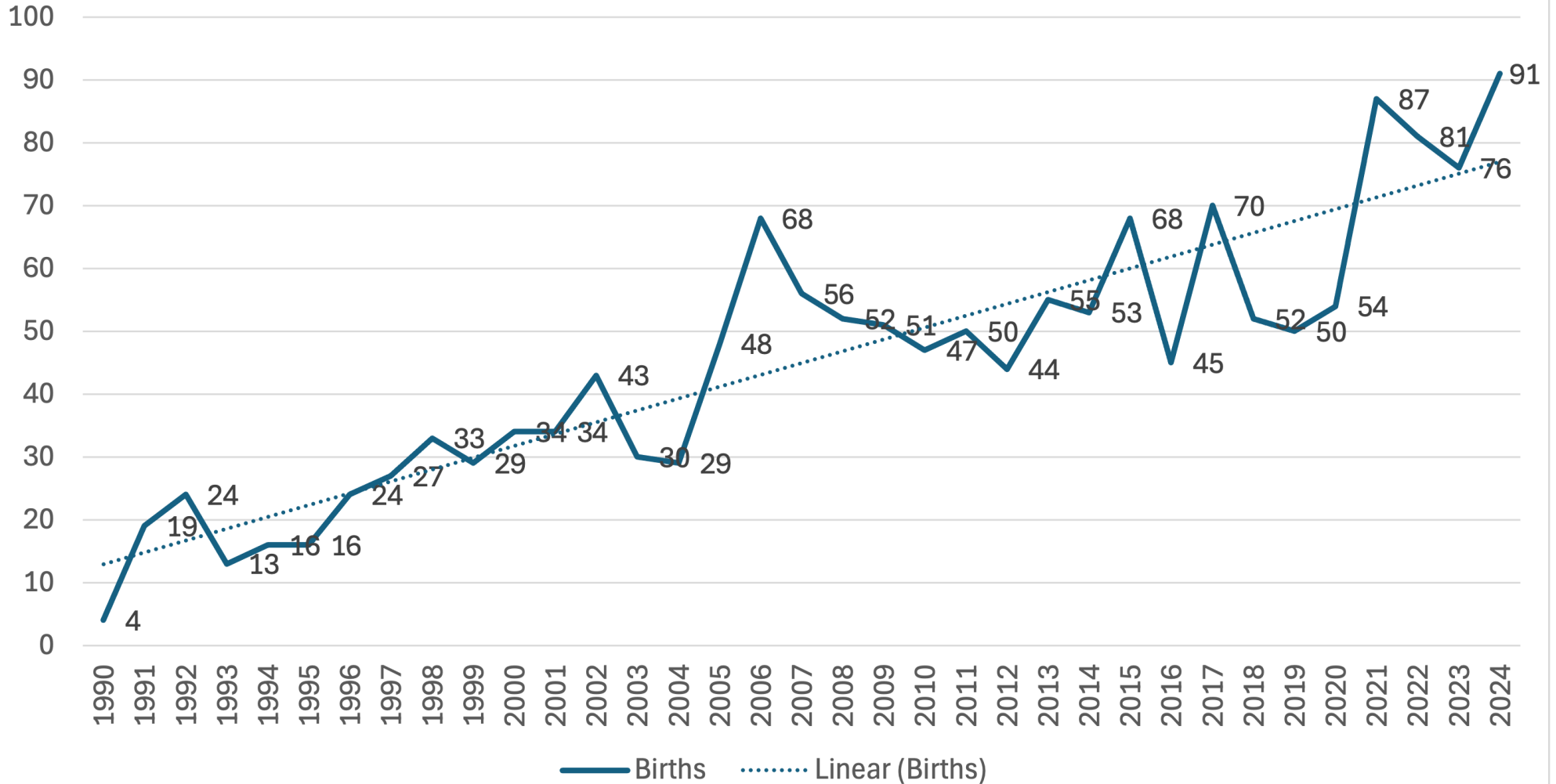
Shannon Bingham – 3/6/26

Findings

- Enrollment has grown slightly during the most recent school years and by 1.5% during the past 7 years.
- Total population has grown by 800 people during the past decade.
- Births have increased during prior decades and are continuing to increase.
- Residential housing growth has been significant with three builders working in Wolf Creek Run West. New housing and rising birth rates should allow enrollment growth in the coming five years.
- Student export to online providers has accelerated in recent years. Students that have gone online have been mostly replaced by growth from new housing.
- The recent departing senior classes have been larger than incoming kindergartens and have produced built in enrollment loss which has somewhat concealed new housing-based growth.
- Enrollment is expected to grow by 30 students according to the medium basis, mostly at the elementary level.

Births

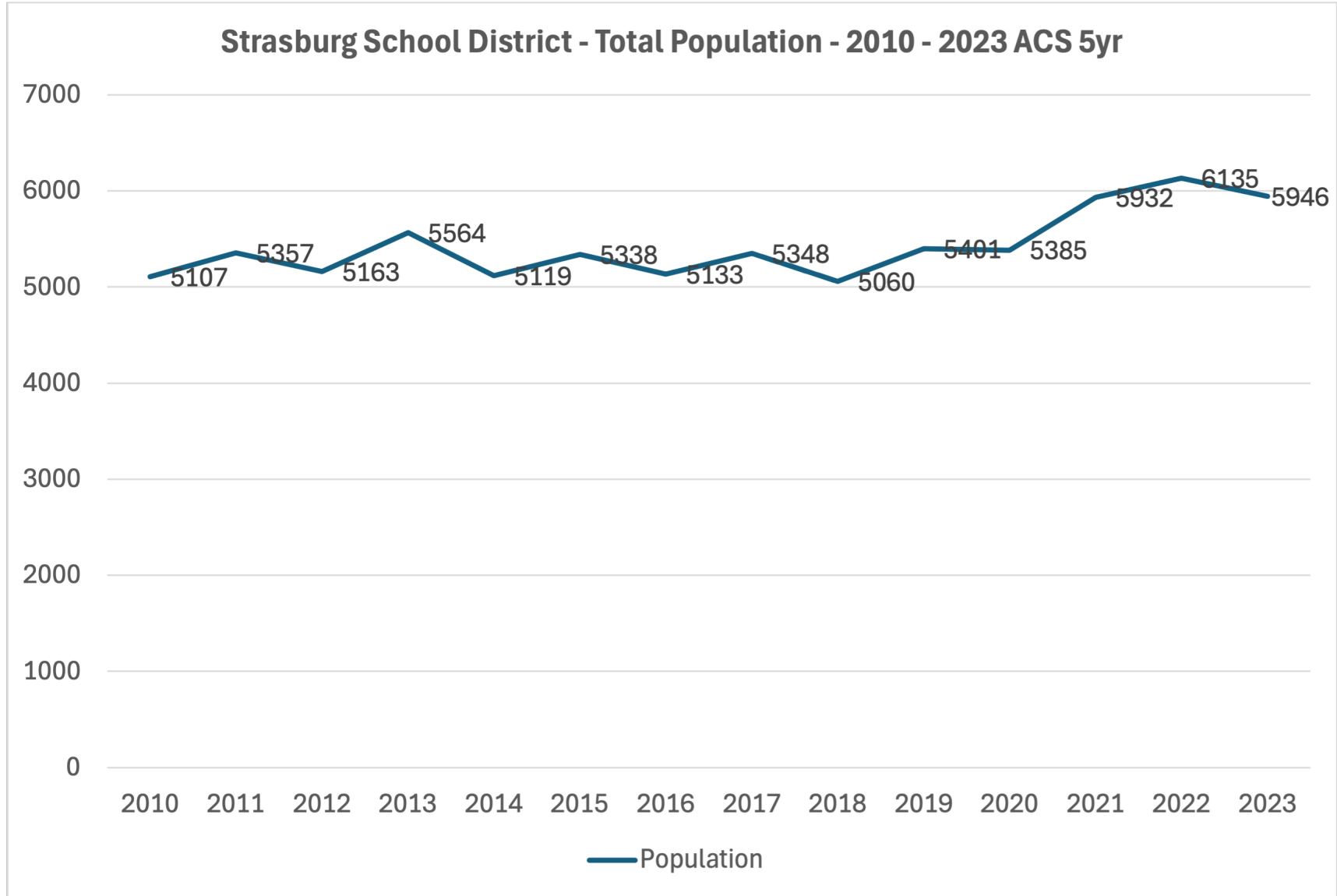
Strasburg School District - 1990 - 2024 - CDPHE



Annual birth counts in the geographic boundary of the district have grown and are expected to continue to do so.



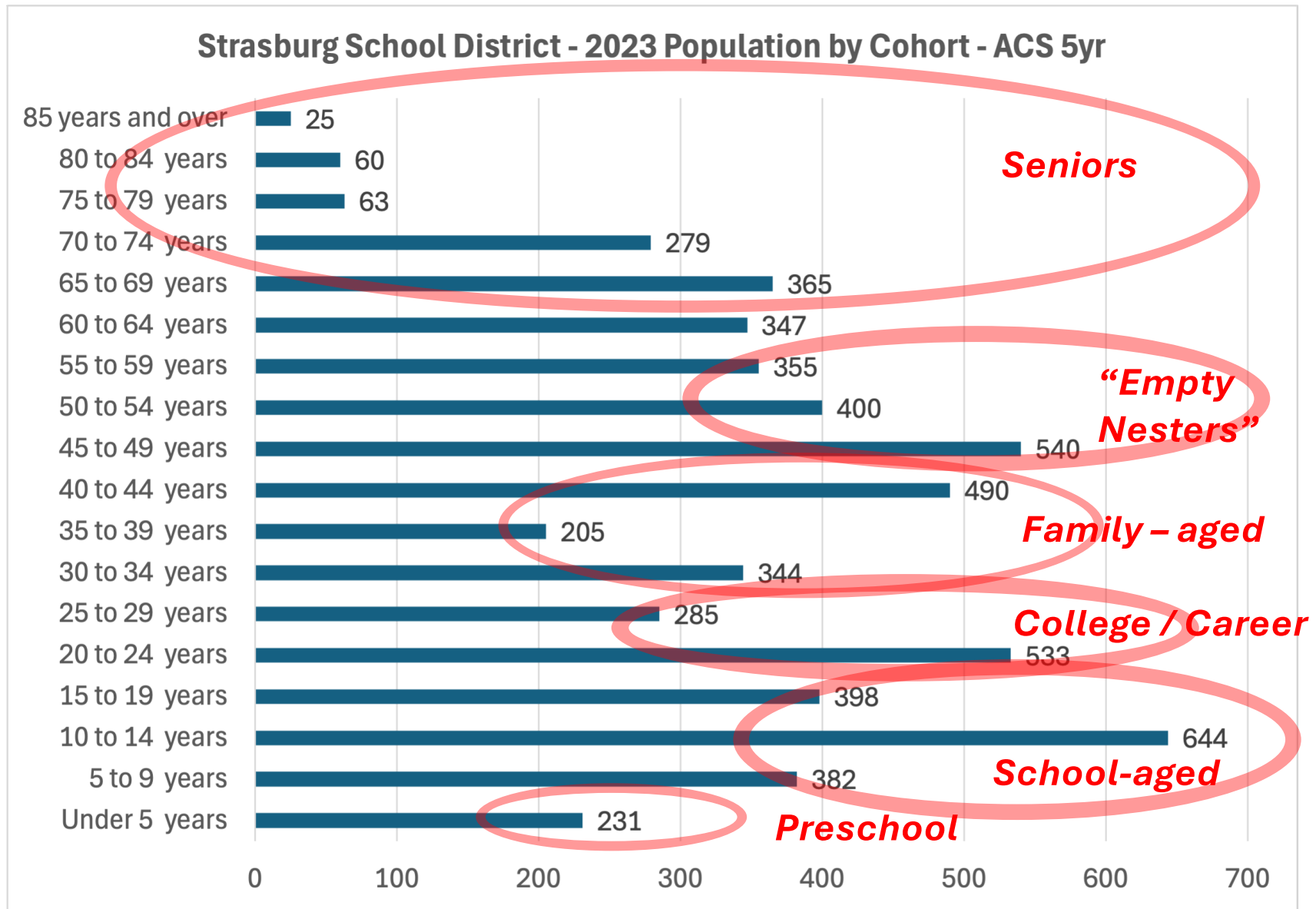
Total Population Growth



Total population in all age groups has grown by approximately 800 during the prior decade.

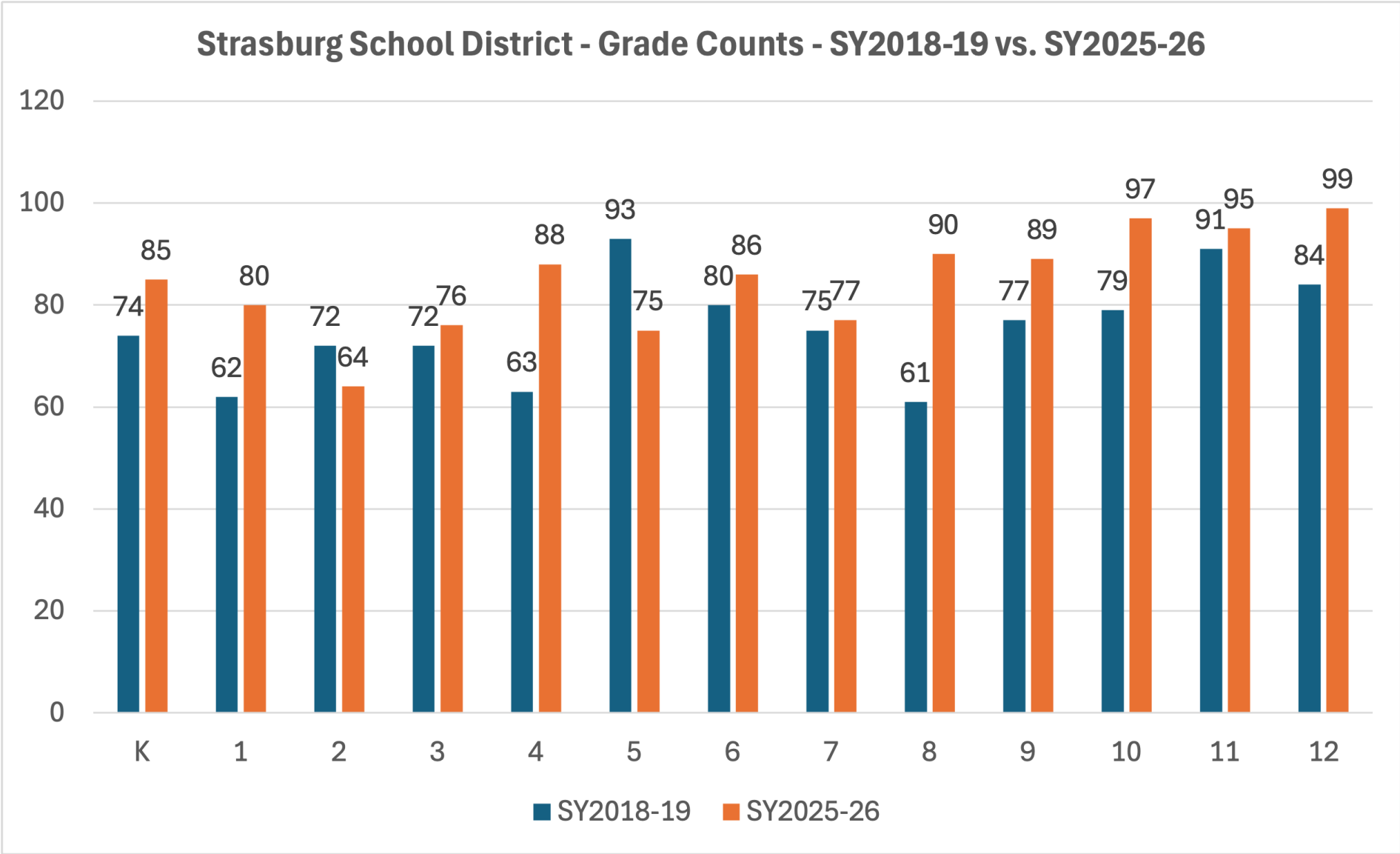


Population in Five-year Cohorts



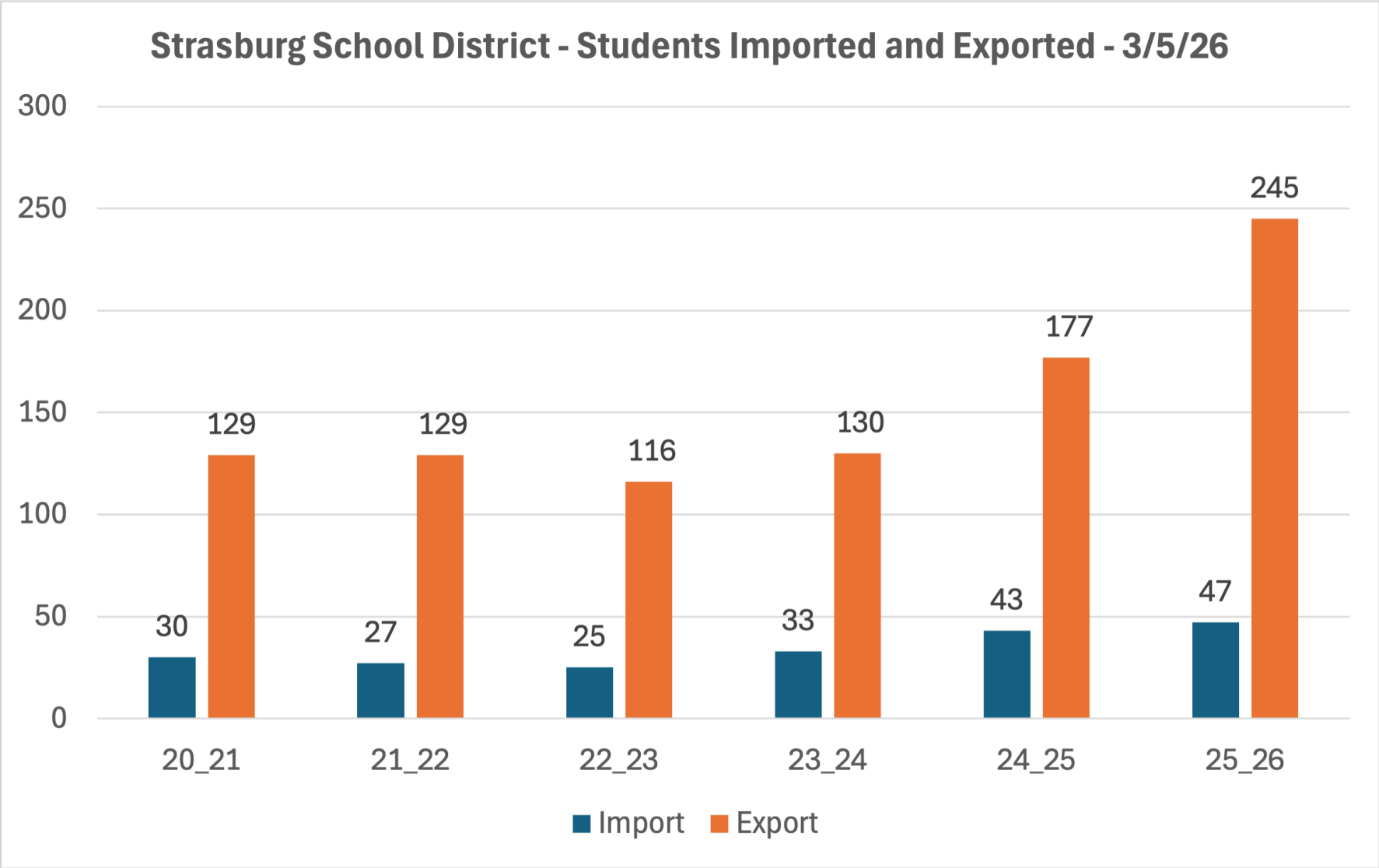
Given the small populations in the district, population counts are volatile. In general, adult population groups are similar to school-aged populations which indicates a family-centered community.

Grade Sizes SY18-19 vs. SY25-26



All grades except one have grown during the past seven years.

Import / Export of Students



The district has lost more students to online programs in recent years which have been mostly replaced by students from new development.



Import / Export of Students - Detail

| Organization | Export_20_21 | Export_21_22 | Export_22_23 | Export_23_24 | Export_24_25 | Export_25_26 | Import_20_21 | Import_21_22 | Import_22_23 | Import_23_24 | Import_24_25 | Import_25_26 |
|-----------------------------------|--------------|--------------|--------------|--------------|--------------|--------------|--------------|--------------|--------------|--------------|--------------|--------------|
| Byers 32J | 23 | 39 | 48 | 55 | 67 | 74 | 8 | 8 | 10 | 12 | 9 | 14 |
| Education reEnvisioned BOCES | 23 | 6 | 7 | 11 | 16 | 74 | | | | | | |
| Bennett 29J | 21 | 18 | 14 | 12 | 39 | 49 | 12 | 12 | 10 | 13 | 21 | 20 |
| Cherry Creek 5 | 8 | 10 | 4 | 5 | 8 | 10 | | | | | 1 | |
| School District 27J | 1 | | 7 | 5 | 10 | 9 | | | | | | |
| Adams-Arapahoe 28J | 12 | 6 | 3 | 7 | 12 | 8 | 3 | 2 | | | | 1 |
| Denver County 1 | 2 | 6 | 5 | 3 | 3 | 3 | 2 | 1 | | | | |
| Agate 300 | 4 | 5 | 6 | 5 | 5 | 3 | | | | | | |
| District 49 | 4 | 2 | 3 | 3 | 1 | 3 | | | | | | |
| Adams 12 Five Star Schools | | 1 | 1 | 2 | 2 | 2 | | | | | | |
| Deer Trail 26J | | | | 5 | 2 | 2 | 5 | 4 | 5 | 7 | 5 | 7 |
| Julesburg Re-1 | | | 2 | 2 | 1 | 2 | | | | | | |
| Charter School Institute | 7 | 4 | 3 | 3 | 3 | 2 | | | | | | |
| Westminster Public Schools | | | | | | 1 | | | | | | |
| Douglas County Re 1 | 3 | 2 | 1 | 1 | 1 | 1 | | | | | | |
| Cheyenne Mountain 12 | | | | | | 1 | | | | | | |
| Weld County School District RE-3J | 3 | 4 | 4 | 2 | 2 | 1 | | | | | | |
| VITAS RE-5 | 2 | | | | | | | | | | | |
| Mapleton 1 | 10 | 18 | | | | | | | | | | |
| Academy 20 | 1 | 1 | | | | | | | | | | |
| Durango 9-R | 5 | 2 | 2 | 3 | | | | | | | | |
| Vilas RE-5 | | 2 | 1 | 1 | | | | | | | | |
| Woodlin R-104 | | 3 | 3 | 4 | 4 | | | | | | | |
| Westminster Public Schools | | | 2 | 1 | 1 | | | | | | | |
| Arriba-Flagler C-20 | | | | | | | | | 1 | | 1 | 2 |
| Jefferson County R-1 | | | | | | | | | | | 1 | |
| Spain | | | | | | | | | | | 3 | 1 |
| Poland | | | | | | | | | | | 1 | |
| Switzerland | | | | | | | | | | | 1 | |
| Germany | | | | | | | | | | | | 1 |
| Italy | | | | | | | | | | | | 1 |
| Total | 129 | 129 | 116 | 130 | 177 | 245 | 30 | 27 | 25 | 33 | 43 | 47 |

The district has lost more students to online programs - Byers 32J and Ed reEnvisioned BOCES have increased their draw from the district the most.

Housing Growth

| Development | Density | For Sale | Units Remaining |
|--------------|---------|----------|-----------------|
| Pulte | SFD | 10 | 100+ |
| Dreamfinders | SFD | 13 | 100+ |

| Annual Expectations | Units | ES | MS | HS | Maximum Students From Development |
|---------------------|-------|----|----|----|-----------------------------------|
| Wolf Creek Run West | 40 | 12 | 8 | 10 | 30 |

Three builders are working in Wolf Creek Run West including Pulte, Dreamfinders and LGI. Single family units are priced in the \$400's and are very attractive to young families.



Enrollment History

| Historical Enrollment by Grade | Totals by School Type | | | | | | | | |
|--------------------------------|-----------------------|-------|--------|--------|----|----------|------------|----------|-------|
| Year | (K-5) | (6-8) | (9-12) | (K-12) | ps | Tot w PS | Net Growth | % Change | Avg |
| 2018 | 436 | 216 | 331 | 983 | 82 | 1065 | | | |
| 2019 | 441 | 251 | 321 | 1013 | 67 | 1080 | 15 | 1.4% | |
| 2020 | 418 | 256 | 327 | 1001 | 71 | 1072 | -8 | -0.7% | |
| 2021 | 456 | 281 | 354 | 1091 | 80 | 1171 | 99 | 9.2% | |
| 2022 | 474 | 255 | 392 | 1121 | 88 | 1209 | 38 | 3.2% | |
| 2023 | 470 | 249 | 380 | 1099 | 88 | 1187 | -22 | -1.8% | |
| 2024 | 456 | 250 | 386 | 1092 | 88 | 1180 | -7 | -0.6% | |
| 2025 | 468 | 253 | 380 | 1101 | 79 | 1180 | 0 | 0.0% | 1.53% |

Enrollment during the past three years has been level. The seven-year enrollment trend has been 1.53%.

Larger departing senior classes are replaced by smaller kindergartens thus reducing enrollment. This conceals recent growth from new housing.

| Historical Enrollment by Grade | | | | | | | | | | | | | |
|--------------------------------|----|----|----|----|----|----|----|----|-----|-----|-----|-----|-----|
| Year | K | 1 | 2 | 3 | 4 | 5 | 6 | 7 | 8 | 9 | 10 | 11 | 12 |
| 2018 | 74 | 62 | 72 | 72 | 63 | 93 | 80 | 75 | 61 | 77 | 79 | 91 | 84 |
| 2019 | 76 | 79 | 67 | 73 | 78 | 68 | 97 | 80 | 74 | 66 | 81 | 84 | 90 |
| 2020 | 63 | 74 | 77 | 64 | 69 | 71 | 76 | 95 | 85 | 76 | 73 | 77 | 101 |
| 2021 | 75 | 67 | 84 | 81 | 71 | 78 | 86 | 85 | 110 | 100 | 89 | 71 | 94 |
| 2022 | 77 | 79 | 74 | 85 | 86 | 73 | 86 | 84 | 85 | 114 | 103 | 93 | 82 |
| 2023 | 72 | 79 | 76 | 75 | 80 | 88 | 81 | 85 | 83 | 96 | 101 | 89 | 94 |
| 2024 | 74 | 66 | 79 | 84 | 72 | 81 | 77 | 89 | 84 | 91 | 100 | 105 | 90 |
| 2025 | 85 | 80 | 64 | 76 | 88 | 75 | 86 | 77 | 90 | 89 | 97 | 95 | 99 |

Enrollment Forecast

| Low | (K-5) | (6-8) | (9-12) | (K-12) | ps | Tot w PS | Net Growth | 5yr % Avg. | | Capacity ES | Capacity MS | Capacity HS | Seats ES | Seats MS | Seats HS |
|--------|-------|-------|--------|--------|----|----------|------------|------------|--------|-------------|-------------|-------------|----------|----------|----------|
| 2026 | 475 | 241 | 376 | 1,092 | 79 | 1,171 | -9 | -0.1% | Low | 730 | 309 | 449 | 176 | 68 | 73 |
| 2027 | 469 | 257 | 363 | 1,088 | 79 | 1,167 | -3 | | | 730 | 309 | 449 | 182 | 52 | 86 |
| 2028 | 476 | 250 | 361 | 1,087 | 79 | 1,166 | -1 | | | 730 | 309 | 449 | 175 | 59 | 88 |
| 2029 | 495 | 244 | 357 | 1,097 | 79 | 1,176 | 10 | | | 730 | 309 | 449 | 156 | 65 | 92 |
| 2030 | 502 | 238 | 360 | 1,099 | 79 | 1,178 | 3 | | | 730 | 309 | 449 | 149 | 71 | 89 |
| Medium | (K-5) | (6-8) | (9-12) | (K-12) | ps | Tot w PS | Net Growth | 5yr % Avg. | | Capacity ES | Capacity MS | Capacity HS | Seats ES | Seats MS | Seats HS |
| 2026 | 478 | 243 | 379 | 1100 | 79 | 1179 | -2 | 2.6% | Medium | 730 | 309 | 449 | 173 | 67 | 70 |
| 2027 | 475 | 259 | 371 | 1105 | 79 | 1184 | 6 | | | 730 | 309 | 449 | 177 | 50 | 78 |
| 2028 | 484 | 253 | 373 | 1111 | 79 | 1190 | 5 | | | 730 | 309 | 449 | 167 | 56 | 76 |
| 2029 | 507 | 247 | 371 | 1124 | 79 | 1203 | 13 | | | 730 | 309 | 449 | 145 | 62 | 78 |
| 2030 | 514 | 242 | 375 | 1131 | 79 | 1210 | 7 | | | 730 | 309 | 449 | 137 | 67 | 74 |
| High | (K-5) | (6-8) | (9-12) | (K-12) | ps | Tot w PS | Net Change | 5yr % Avg. | | Capacity ES | Capacity MS | Capacity HS | Seats ES | Seats MS | Seats HS |
| 2026 | 486 | 241 | 377 | 1104 | 79 | 1183 | 3 | 5.1% | High | 730 | 309 | 449 | 165 | 68 | 72 |
| 2027 | 490 | 258 | 368 | 1116 | 79 | 1195 | 12 | | | 730 | 309 | 449 | 161 | 51 | 81 |
| 2028 | 505 | 255 | 370 | 1130 | 79 | 1209 | 14 | | | 730 | 309 | 449 | 146 | 54 | 79 |
| 2029 | 531 | 253 | 364 | 1148 | 79 | 1227 | 18 | | | 730 | 309 | 449 | 120 | 56 | 85 |
| 2030 | 539 | 254 | 368 | 1161 | 79 | 1240 | 13 | | | 730 | 309 | 449 | 112 | 55 | 81 |

Level Enrollment

30 Students Growth

60 Students Growth

Overall enrollment will grow by 30 students with most growth in elementary
 Strasburg Elementary includes the K-5 enrollment plus PK shown in the table.
 Hemphill Middle School include the grade 6 – 8 enrollment shown in the table.
 Strasburg High School enrollment includes grade 9-12 enrollment less 28 students attending Prairie Creek High School with grade assignments as needed.



Enrollment Forecast by Grade

| Low | K | 1 | 2 | 3 | 4 | 5 | 6 | 7 | 8 | 9 | 10 | 11 | 12 |
|-------------|----------|----------|----------|----------|----------|----------|----------|----------|----------|----------|-----------|-----------|-----------|
| 2026 | 78 | 86 | 78 | 66 | 77 | 90 | 76 | 88 | 77 | 98 | 88 | 95 | 95 |
| 2027 | 80 | 79 | 84 | 80 | 67 | 79 | 91 | 78 | 88 | 85 | 97 | 86 | 95 |
| 2028 | 82 | 81 | 77 | 86 | 81 | 69 | 80 | 93 | 78 | 96 | 84 | 95 | 86 |
| 2029 | 84 | 83 | 79 | 79 | 87 | 83 | 70 | 82 | 93 | 86 | 95 | 82 | 95 |
| 2030 | 86 | 85 | 81 | 81 | 80 | 89 | 84 | 72 | 82 | 101 | 85 | 93 | 82 |

Low - Level Enrollment

| Medium | K | 1 | 2 | 3 | 4 | 5 | 6 | 7 | 8 | 9 | 10 | 11 | 12 |
|---------------|----------|----------|----------|----------|----------|----------|----------|----------|----------|----------|-----------|-----------|-----------|
| 2026 | 78 | 86 | 81 | 65 | 77 | 90 | 76 | 89 | 78 | 97 | 91 | 97 | 94 |
| 2027 | 80 | 79 | 87 | 82 | 66 | 79 | 91 | 79 | 90 | 85 | 99 | 91 | 96 |
| 2028 | 82 | 81 | 80 | 89 | 83 | 69 | 80 | 94 | 80 | 97 | 87 | 99 | 90 |
| 2029 | 84 | 83 | 82 | 82 | 90 | 86 | 70 | 83 | 95 | 87 | 99 | 87 | 98 |
| 2030 | 86 | 85 | 84 | 84 | 83 | 92 | 87 | 72 | 84 | 102 | 89 | 99 | 86 |

Medium - 30 Students Growth

| High | K | 1 | 2 | 3 | 4 | 5 | 6 | 7 | 8 | 9 | 10 | 11 | 12 |
|-------------|----------|----------|----------|----------|----------|----------|----------|----------|----------|----------|-----------|-----------|-----------|
| 2026 | 78 | 88 | 83 | 67 | 79 | 91 | 76 | 88 | 77 | 95 | 95 | 95 | 92 |
| 2027 | 80 | 81 | 91 | 86 | 70 | 82 | 92 | 78 | 88 | 82 | 101 | 93 | 92 |
| 2028 | 82 | 83 | 84 | 94 | 89 | 73 | 83 | 94 | 78 | 93 | 88 | 99 | 90 |
| 2029 | 84 | 85 | 86 | 87 | 97 | 92 | 74 | 85 | 94 | 83 | 99 | 86 | 96 |
| 2030 | 85 | 87 | 88 | 89 | 90 | 100 | 93 | 76 | 85 | 99 | 89 | 97 | 83 |

High - 60 Students Growth

20-year Forecast Using Medium Basis

| Year | PS/ES | MS | HS | Total | ES Cap | MS Cap | HS Cap | ES Seats Available | MS Seats Available | HS Seats Available |
|------|-------|-----|-----|-------|--------|--------|--------|--------------------|--------------------|--------------------|
| 2030 | 592 | 243 | 375 | 1210 | 730 | 309 | 449 | 138 | 66 | 74 |
| 2031 | 595 | 244 | 377 | 1216 | 730 | 309 | 449 | 135 | 65 | 72 |
| 2032 | 598 | 245 | 379 | 1222 | 730 | 309 | 449 | 132 | 64 | 70 |
| 2033 | 601 | 247 | 381 | 1228 | 730 | 309 | 449 | 129 | 62 | 68 |
| 2034 | 604 | 248 | 383 | 1234 | 730 | 309 | 449 | 126 | 61 | 66 |
| 2035 | 607 | 249 | 384 | 1241 | 730 | 309 | 449 | 123 | 60 | 65 |
| 2036 | 610 | 250 | 386 | 1247 | 730 | 309 | 449 | 120 | 59 | 63 |
| 2037 | 613 | 252 | 388 | 1253 | 730 | 309 | 449 | 117 | 57 | 61 |
| 2038 | 616 | 253 | 390 | 1259 | 730 | 309 | 449 | 114 | 56 | 59 |
| 2039 | 619 | 254 | 392 | 1266 | 730 | 309 | 449 | 111 | 55 | 57 |
| 2040 | 622 | 255 | 394 | 1272 | 730 | 309 | 449 | 108 | 54 | 55 |
| 2041 | 625 | 257 | 396 | 1278 | 730 | 309 | 449 | 105 | 52 | 53 |
| 2042 | 629 | 258 | 398 | 1285 | 730 | 309 | 449 | 101 | 51 | 51 |
| 2043 | 632 | 259 | 400 | 1291 | 730 | 309 | 449 | 98 | 50 | 49 |
| 2044 | 635 | 261 | 402 | 1298 | 730 | 309 | 449 | 95 | 48 | 47 |
| 2045 | 638 | 262 | 404 | 1304 | 730 | 309 | 449 | 92 | 47 | 45 |
| 2046 | 641 | 263 | 406 | 1311 | 730 | 309 | 449 | 89 | 46 | 43 |
| 2047 | 644 | 265 | 408 | 1317 | 730 | 309 | 449 | 86 | 44 | 41 |
| 2048 | 648 | 266 | 410 | 1324 | 730 | 309 | 449 | 82 | 43 | 39 |
| 2049 | 651 | 267 | 412 | 1330 | 730 | 309 | 449 | 79 | 42 | 37 |
| 2050 | 654 | 268 | 414 | 1337 | 730 | 309 | 449 | 76 | 41 | 35 |

The current impacts affecting the district suggest adequate capacity for the foreseeable future. Changes in land development activity could change these trends dramatically.



Summary

- Enrollment has grown slightly during the most recent school years and by 1.5% during the past 7 years.
- Total population has grown by 800 people during the past decade.
- Births have increased during prior decades and are continuing to increase.
- Residential housing growth has been significant with three builders working in Wolf Creek Run West. New housing and rising birth rates should allow enrollment growth in the coming five years.
- Student export to online providers has accelerated in recent years. Students that have gone online have been mostly replaced by growth from new housing.
- The recent departing senior classes have been larger than incoming kindergartens and have produced built in enrollment loss which has somewhat concealed new housing-based growth.
- Enrollment is expected to grow by 30 students according to the medium basis, mostly at the elementary level.



| CAPACITY ANALYSIS | | | | | | |
|-------------------|--------|----------------|------------------|--------------|-------------------|----------------------|
| GRADE / USE | ROOM # | AVG. ROOM SIZE | CDE SF PER PUPIL | CDE CAPACITY | BUILDING CAPACITY | EDUCATIONAL CAPACITY |

| | | | | | | |
|-----------|-----|------|---|--|---|---|
| CAFETERIA | | | | | | |
| DINING | 108 | 3510 | 0 | | 0 | 0 |

| | | | | | | |
|--------------|-----|-----|----|----|----|----|
| CLASSROOM | | | | | | |
| 1ST GRADE | 505 | 850 | 32 | 27 | 25 | 25 |
| 1ST GRADE | 506 | 850 | 32 | 27 | 25 | 25 |
| 1ST GRADE | 507 | 850 | 32 | 27 | 25 | 25 |
| 1ST GRADE | 508 | 850 | 32 | 27 | 25 | 25 |
| 2ND GRADE | 501 | 850 | 32 | 27 | 25 | 25 |
| 2ND GRADE | 502 | 850 | 32 | 27 | 25 | 25 |
| 2ND GRADE | 503 | 850 | 32 | 27 | 25 | 25 |
| 2ND GRADE | 504 | 850 | 32 | 27 | 25 | 25 |
| 3RD GRADE | 402 | 800 | 32 | 25 | 25 | 25 |
| 3RD GRADE | 403 | 810 | 32 | 25 | 25 | 25 |
| 3RD GRADE | 405 | 840 | 32 | 26 | 25 | 25 |
| 3RD GRADE | 406 | 840 | 32 | 26 | 25 | 25 |
| 4TH GRADE | 605 | 810 | 30 | 27 | 25 | 25 |
| 4TH GRADE | 606 | 810 | 30 | 27 | 25 | 25 |
| 4TH GRADE | 608 | 810 | 30 | 27 | 25 | 25 |
| 5TH GRADE | 602 | 810 | 30 | 27 | 25 | 25 |
| 5TH GRADE | 603 | 810 | 30 | 27 | 25 | 25 |
| 5TH GRADE | 604 | 810 | 30 | 27 | 25 | 25 |
| FLEX | 401 | 750 | 32 | 23 | 25 | 25 |
| FLEX | 407 | 800 | 32 | 25 | 25 | 25 |
| FLEX | 601 | 810 | 30 | 27 | 25 | 25 |
| FLEX | 607 | 810 | 30 | 27 | 25 | 25 |
| KINDERGARTEN | 204 | 850 | 38 | 22 | 20 | 20 |
| KINDERGARTEN | 205 | 850 | 38 | 22 | 20 | 20 |
| KINDERGARTEN | 206 | 850 | 38 | 22 | 20 | 20 |
| KINDERGARTEN | 207 | 850 | 38 | 22 | 20 | 20 |
| KINDERGARTEN | 208 | 850 | 38 | 22 | 20 | 20 |
| PRE-K | 201 | 850 | 0 | | 20 | 20 |
| PRE-K | 202 | 850 | 0 | | 20 | 20 |
| PRE-K | 203 | 850 | 0 | | 20 | 20 |
| PRE-K | 308 | 850 | 0 | | 20 | 20 |

| | | | | | | |
|--------------|-----|-----|----|----|----|---|
| SPECIAL ED | | | | | | |
| INTERVENTION | 307 | 730 | 37 | 20 | 25 | 0 |
| INTERVENTION | 404 | 730 | 37 | 20 | 25 | 0 |
| INTERVENTION | 409 | 730 | 37 | 20 | 25 | 0 |

| | | | | | | |
|-------------|-----|------|-----|-----|-----|---|
| SPECIALS | | | | | | |
| ART | 408 | 905 | 35 | 26 | 0 | 0 |
| GYMNASIUM | 101 | 5750 | 0 | | 0 | 0 |
| LIBRARY | 303 | 1540 | 0 | | 0 | 0 |
| MAKER SPACE | 107 | 615 | 30 | 21 | 0 | 0 |
| MUSIC | 107 | 1540 | 35 | 44 | 0 | 0 |
| 40 | | | 841 | 805 | 730 | |

Building capacity calculations consider any space of 675 square feet or larger as a potential classroom, per CDE guidance. These rooms are counted in building capacity and may be used as classrooms if needed to accommodate enrollment increases.

Educational capacity calculations reflect how the building is currently being used.

CAPACITY PLAN LEGEND

CAPACITY TAG

Area of space shown in pink is currently being used as classroom space.

COLOR LEGEND

- INSTRUCTIONAL SPACES
- SPECIAL EDUCATION / INTERVENTION
- SPECIALS / ELECTIVES
- FLEX CLASSROOMS
- ADMINISTRATION / OTHER USE
- CAFETERIA
- SCIENCE
- MODULAR SPACE



CAPACITY PLAN



02/17/2026

STRASBURG ELEMENTARY SCHOOL
CAPACITY PLAN



| CAPACITY ANALYSIS | | | | | | |
|-------------------|--------|----------------|------------------|--------------|-------------------|---|
| GRADE / USE | ROOM # | AVG. ROOM SIZE | CDE SF PER PUPIL | CDE CAPACITY | BUILDING CAPACITY | SUB-TOTAL EDUCATIONAL CAPACITY (JR. HIGH MODEL) |

| | | | | | | |
|-----------|-----|------|---|--|---|---|
| CAFETERIA | | | | | | |
| DINING | 112 | 1878 | 0 | | 0 | 0 |

| | | | | | | |
|-----------|-----|-----|----|---------------------------------|----|----|
| CLASSROOM | | | | | | |
| 6TH GRADE | 162 | 850 | 30 | 28 | 25 | 25 |
| 6TH GRADE | 163 | 850 | 30 | 28 | 25 | 25 |
| 6TH GRADE | 164 | 850 | 30 | 28 | 25 | 25 |
| 6TH GRADE | 165 | 850 | 30 | 28 | 25 | 25 |
| 7TH GRADE | 145 | 850 | 28 | 30 | 25 | 25 |
| 7TH GRADE | 147 | 850 | 28 | 30 | 25 | 25 |
| 7TH GRADE | 172 | 850 | 28 | 30 | 25 | 25 |
| 8TH GRADE | 171 | 850 | 28 | 30 | 25 | 25 |
| 8TH GRADE | 173 | 850 | 28 | 30 | 25 | 25 |
| 8TH GRADE | 174 | 850 | 28 | 30 </td <td>25</td> <td>25</td> | 25 | 25 |

| | | | | | | |
|-----------|-----|-----|----|----|----|----|
| SCIENCE | | | | | | |
| BIOLOGY | 141 | 910 | 40 | 23 | 25 | 25 |
| CHEMISTRY | 141 | 910 | 40 | 23 | 25 | 25 |

| | | | | | | |
|--------------|-----|-----|----|----|----|---|
| SPECIAL ED | | | | | | |
| INTERVENTION | 146 | 392 | 37 | 11 | 0 | 4 |
| INTERVENTION | 161 | 850 | 37 | 23 | 25 | 8 |

| | | | | | | |
|-----------|-----|------|----|-----|-----|-----|
| SPECIALS | | | | | | |
| ART | 144 | 1074 | 30 | 36 | 25 | 25 |
| BAND | 139 | 850 | 35 | 24 | 25 | 25 |
| COMP LAB | 134 | 850 | 32 | 27 | 25 | 25 |
| GYMNASIUM | 131 | 7395 | 0 | | 25 | 25 |
| LIBRARY | 121 | 2046 | 0 | | 0 | 0 |
| | 20 | | | 461 | 425 | 412 |

Building capacity calculations consider any space of 675 square feet or larger as a potential classroom, per CDE guidance. These rooms are counted in building capacity and may be used as classrooms if needed to accommodate enrollment increases.

Sub-total Educational capacity calculations reflect how the building is currently being used.

An optimization factor is applied to the educational capacity of a middle/high school to accurately reflect how the building functions during the academic day. This factor accounts for operational elements such as schedule flexibility, teacher planning periods, and bell schedules. For schools operating on a 6-of-8 period schedule, the optimization factor is 0.75.

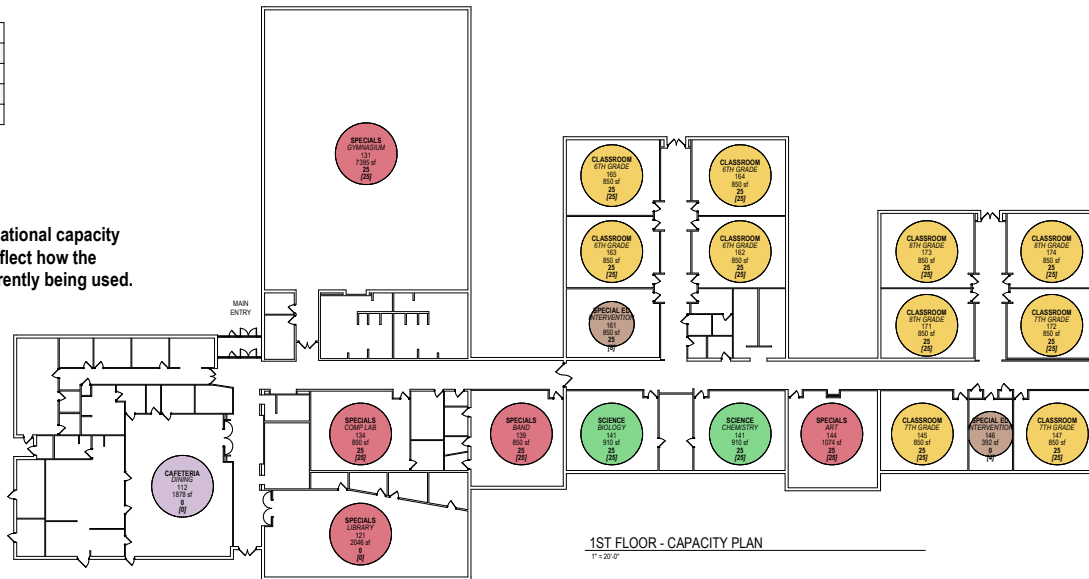
SUB-TOTAL EDUCATIONAL CAPACITY = 412
 TOTAL EDUCATIONAL CAPACITY = 412 x 0.75 = 309

CAPACITY PLAN LEGEND

CAPACITY TAG

COLOR LEGEND

- INSTRUCTIONAL SPACES
- SPECIAL EDUCATION / INTERVENTION
- SPECIALS / ELECTIVES
- FLEX CLASSROOMS
- ADMINISTRATION / OTHER USE
- CAFETERIA
- SCIENCE
- MODULAR SPACE



1ST FLOOR - CAPACITY PLAN

1" = 20'-0"



| CAPACITY ANALYSIS | | | | | | |
|-------------------|--------|----------------|------------------|--------------|-------------------|--------------------------------|
| GRADE / USE | ROOM # | AVG. ROOM SIZE | CDE SF PER PUPIL | CDE CAPACITY | BUILDING CAPACITY | SUB-TOTAL EDUCATIONAL CAPACITY |

| CAFETERIA | | | | | | |
|-----------|------|------|---|--|---|---|
| COMMONS | C-02 | 1310 | 0 | | 0 | 0 |

| CLASSROOM | | | | | | |
|-------------|-----|-----|----|----|----|----|
| INSTRUCTION | 105 | 710 | 28 | 25 | 25 | 25 |
| INSTRUCTION | 107 | 850 | 28 | 30 | 25 | 25 |
| INSTRUCTION | 108 | 850 | 28 | 30 | 25 | 25 |
| INSTRUCTION | 108 | 610 | 28 | 22 | 25 | 25 |
| INSTRUCTION | 111 | 850 | 28 | 30 | 25 | 25 |
| INSTRUCTION | 112 | 850 | 28 | 30 | 25 | 25 |
| INSTRUCTION | 114 | 850 | 28 | 30 | 25 | 25 |
| INSTRUCTION | 115 | 850 | 28 | 30 | 25 | 25 |
| INSTRUCTION | 306 | 870 | 28 | 31 | 25 | 25 |
| INSTRUCTION | 308 | 650 | 28 | 23 | 25 | 25 |
| INSTRUCTION | 309 | 650 | 28 | 23 | 25 | 25 |
| INSTRUCTION | 310 | 650 | 28 | 23 | 25 | 25 |
| INSTRUCTION | 312 | 550 | 28 | 20 | 25 | 25 |
| INSTRUCTION | 313 | 550 | 28 | 20 | 25 | 25 |
| INSTRUCTION | 315 | 670 | 28 | 24 | 25 | 25 |
| INSTRUCTION | 317 | 670 | 28 | 24 | 25 | 25 |
| INSTRUCTION | 318 | 670 | 28 | 24 | 25 | 25 |

| SPECIAL ED | | | | | | |
|--------------|-----|-----|----|----|----|---|
| INTERVENTION | 115 | 590 | 37 | 16 | 0 | 8 |
| INTERVENTION | 116 | 590 | 37 | 16 | 0 | 8 |
| INTERVENTION | 304 | 680 | 37 | 18 | 25 | 8 |

| SPECIALS | | | | | | |
|-------------------|-----|------|----|-----|-----|-----|
| ART | 307 | 750 | 45 | 17 | 25 | 25 |
| COMP LAB | 124 | 980 | 32 | 31 | 25 | 25 |
| DISTANCE LEARNING | 107 | 810 | 32 | 25 | 25 | 25 |
| FITNESS | 302 | 2400 | 0 | | 25 | 25 |
| GYMNASIUM | 201 | 8350 | 0 | | 25 | 25 |
| LIBRARY | 106 | 1540 | 0 | | 0 | 0 |
| MUSIC | 102 | 1285 | 35 | 37 | 25 | 25 |
| SMALL GYMNASIUM | 212 | 5600 | 0 | | 0 | 0 |
| | | | | 601 | 600 | 599 |

Building capacity calculations consider any space of 675 square feet or larger as a potential classroom, per CDE guidance. These rooms are counted in building capacity and may be used as classrooms if needed to accommodate enrollment increases.

Sub-total Educational capacity calculations reflect how the building is currently being used.

An optimization factor is applied to the educational capacity of a middle/high school to accurately reflect how the building functions during the academic day. This factor accounts for operational elements such as schedule flexibility, teacher planning periods, and bell schedules. For schools operating on a 6-of-8 period schedule, the optimization factor is 0.75.

SUB-TOTAL EDUCATIONAL CAPACITY = 599
 TOTAL EDUCATIONAL CAPACITY = 599 x 0.75 = 449

CAPACITY PLAN LEGEND

CAPACITY TAG

TYPE OF SPACE
 ROOM NUMBER
 SQUARE FEET
 CDE SF PER PUPIL
 CDE CAPACITY

COLOR LEGEND

- INSTRUCTIONAL SPACES
- SPECIAL EDUCATION / INTERVENTION
- SPECIALS / ELECTIVES
- FLEX CLASSROOMS
- ADMINISTRATION / OTHER USE
- CAFETERIA
- SCIENCE
- MODULAR SPACE

