



Meeting Norms

Stay focused and student centered | Listen actively, respectfully, and without judgment | Communicate with integrity
Honor board time with starting on-time and not being redundant | Limit sidebar conversations
Independent thought and one voice for decisions | Maintain confidentiality

AGENDA - WORK SESSION






Mancos School District Board of Education: The Mancos Public Schools Board of Education provides highly effective governance for our school's strategic student achievement efforts.

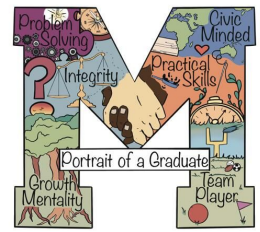
September 8, 2025

5:00 PM

HS Room #223 - Boardroom

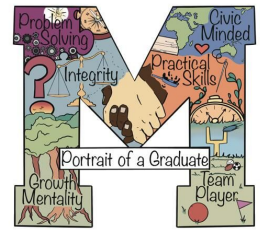
1. Establish Quorum
2. Approval of Agenda
3. Review Norms
4. Strategic Plan
 - A. Objective Review & Update 3C Review
5. Linkage
6. Policy
7. Board- "Other" Work Session
 - A. State Assessment Results
 - B. Student Board Seat Improvement Plans
 - C. BOE Communication Plan Review/Updates
8. Admin
 - A. Calendar Review
 - B. New Topics and Agenda Proposals
 - C. Debrief/Norms Review
9. Adjournment

 Team Driven Shared Leadership
 Data Based Problem Solving and Decision Making
 Comprehensive Screening and Assessment System
 Layered Continuum of Supports (LCS)- Evidence Based Practices, Instruction, and Interventions
 Family, School, and Community Partnerships



Mancos Strategic Plan

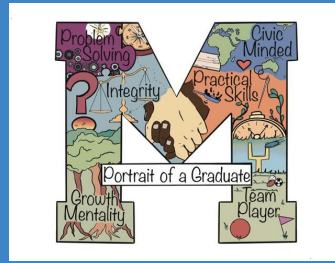
3C: Mancos School District provides students with non-traditional courses based on student input and teacher strengths.

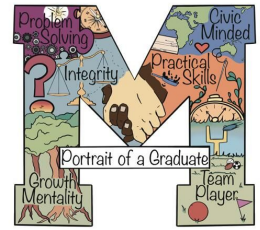


Throughline to 25-26

Engaging Learning: We will deepen our shared understanding, develop practices and implement strategies for rigorous, student-centered learning.

Indicators: Secondary schedules and student transcripts reflect participation in and completion of non-traditional coursework.





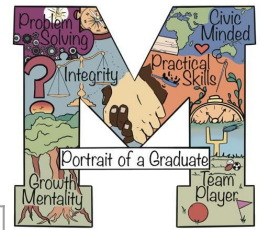
Evidence of Progress Towards Goal

Key:

~~Text~~ existed last year; doesn't exist this year

Text added this year

Middle School Exploratories

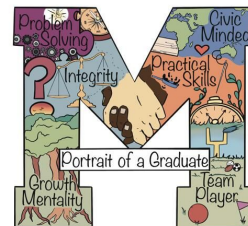


Beg. Robotics	Farmstand	Hunting	Electricity & Magnets	CAD
Adv. Robotics	Career Exploration (8th)	Money Management	Self Improvement	Coding
Google Suites (6th)	Drama	Creative Writing	Drama Productions	Music Exploration
Outdoor Exercise	Spanish	PE	Mapping	
CSI	Art of Cooking	Art	Art Immersion	
Adv. Band	Health (7th)	Strength & Cond.	Shop	

Secondary SCYC Out-of- School Programs



SCYC'S FREE OUT-OF-SCHOOL TIME SECONDARY PROGRAMS



	Monday	Tuesday	Wednesday	Thursday	Friday
After School	4:10-4:30 Chill Zone	4:10-4:30 Chill Zone	4:10-4:30 Chill Zone	4:10-4:30 Chill Zone	Friday Field Trips* Grades K-12 (Stay tuned for dates and times) Skate Club (at Mancos Skate Park) September - October 3-5pm Grades 3-12
	4:30-5:30 Homework Help Grades 6-12	4:30-5:30 Rock Band Grades 6-12	4:30-5:30 Homework Help Grades 6-12	4:30-5:30 Art Honors Grades 6-12	
	E-sports Grades 6-12	Running Club Grades K-12	Crafting Grades 3-6	Coding Grades 3-6	
	Coding Grades 3-6	Acting for Stage Grades 3-7	Musical Theatre Grades 3-7	Nature Club Grades 3-6	
	Crafting Grades 3-6				



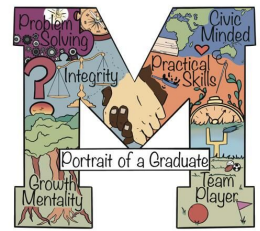
1st Semester Programs: September 2nd - December 18th

2nd Semester Programs: January 12th - April 24th

Free snacks provided at Chill Zone.

*requires registration





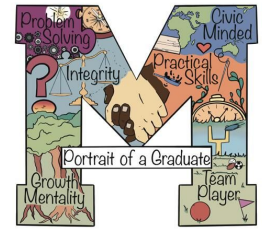
High School Industry Certifications

- Recreational drones license UAS Trust
- UAS part 107 drones license
- ServSafe Managers Food Safety certificate
- Wilderness First Aid
- ~~PCT, Phlebotomy and EKG~~
- NCCER (Building Trades) -
teacher cert. pending
- ~~GAD~~
- CPR



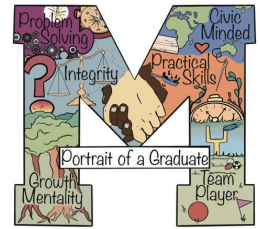
Last year's graduates

- 92% earned at least one certification
- 53% earned two or more certifications



Source: 2025 Graduation Certificates and Honor Cords

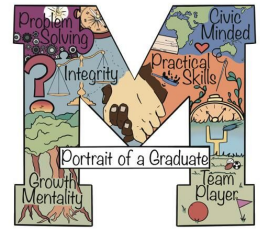
High School Concurrent Enrollment



- Welding
- Construction
- BIO 1066
- Communications
- BUS 2017 (16 students)
- ENP 1005 (11 students)
- PCC-UAS 1040/1050 (8 students)
- MATH 1340 (College Alg) (18 students)
- MATH 1420 (College Trig) (17 students)
- MATH 2410 (Calc 1) (2 students) ← This year only
- COMP 1021 (17 students)
- COMP 1022 (16 students)
- LIT 1015 (14 students)
- ENG 2021 (13 students)



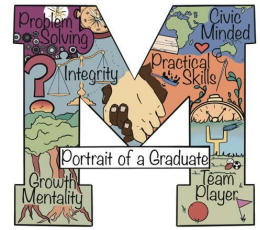
High School Work Study/Internships



- Students self-select opportunities based on their interests.
- Students in a work study or internship must complete weekly reflections that ask them to connect their work to the Portrait of a Graduate competencies.
- Fall semester 25-26 SY: 13 students



PCC Friday Academy

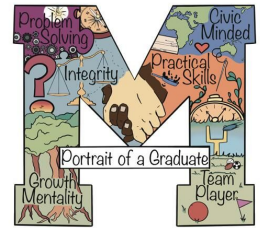


- Basic Sign Language I
- Auto Brake Service I
- Basic Repairs for Home/Apt
- Emergency Medical Responder
- Engineering Methodologies
- Intro to Entrepreneurship
- Nurse Aide Health Care Skills

- Fall semester 25-26 SY: 2 students (EMR course)



Other Opportunities



SWCEC

Shared equipment

Job shadow

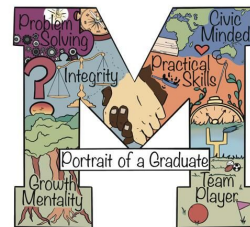
Summer Institute

Futures Fair

Work-based Learning opportunities

Internships

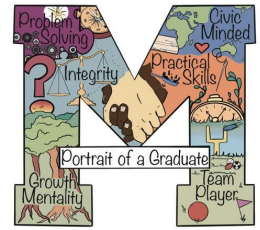




CELEBRATION

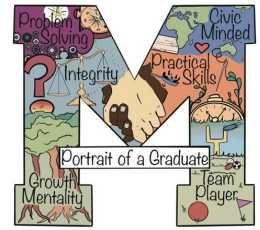


Last year, 24-25

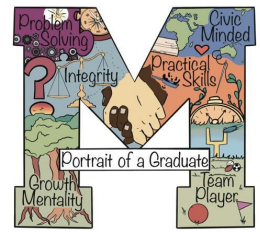


- 31 students received CDIP certs across the 5 pathways
- 22 students received non-CDIP certs in Wilderness First Aid and Food Safety
- Several students going into trades that they received certs for (Google Ads, ServSafe Manager [higher level food handling], CDL, UAS Part 107)
- 11 of our 28 graduates went into a study program or job in which they earned a credit and/or a certificate from one of our pathways

Ongoing

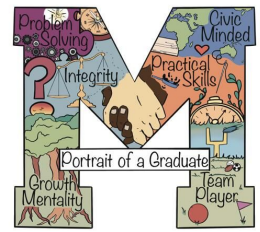


- Currently, all CTE instructors are credentialed through the Colorado Department of Education, with one instructor in the final stages of the credentialing process.
- Over 20 industry partnerships have been or are being developed
- Student participation in the career fair
- Student participation in the hiring fair
- Students have obtained approximately 259 industry certificates 2023-2025
- The shop has had a \$75,000 ventilation upgrade as well as multiple additional upgrades to meet state and local safety standards.
- Culinary students utilize their skills to make dinners for Board Meetings throughout the school year.



Gaps





New measurement tool

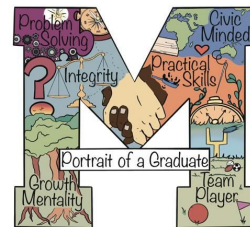
- CTE/Pathways program evaluation tool
- CDE may have one

Portfolios as measurement tool, too

- 27-28 Juniors
- Designing portfolio requirements/rubric
- Embedding places to work on portfolio through coursework

Funding

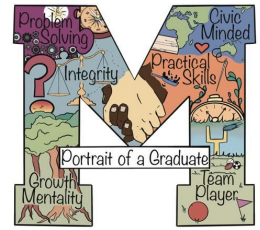
- Continued success depends on continued future funding



Next Steps



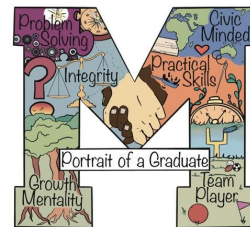
Ask the students



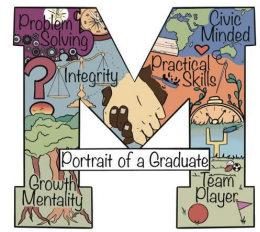
- Perform more student surveying to determine their interests
- Perform more student exit surveys

Questions:

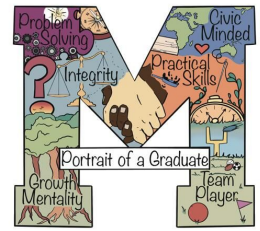
- Are we making an impact with our opportunities?
- What more can we be doing for our students?
- What would they like to see?



How the BOE can help

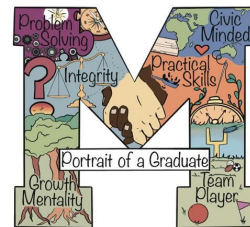


- Look for means to provide funding for two more teachers to receive CTE credentialing (Engineering, Arts)
- Funding for current CTE teachers to attend state-wide professional development opportunities



Discussion Protocol





JJA-3R Student Member of the School Board

The student representative to the School Board will:

- Represent the student voice and perspective of all students enrolled in Mancos High School to the School Board, Superintendent, and leadership team.
- Actively solicit ideas and input from various student stakeholder groups within the school district.
- Actively interact and communicate with various student stakeholder groups to help explain the roles and responsibilities of the Board.
- Actively interact with various student stakeholder groups to help communicate board policies and actions that impact student life in the school district.
- Consistently attend and participate in School Board meetings and work sessions.
- Communicate in a timely fashion with the Board when the student representative is not able to be present at meetings.
- Represent themselves in a professional and positive manner to all stakeholders within Mancos RE-6 school District, (parents, community, school board, RE-6 staff, etc.)

Student representative will not be allowed to vote on matters coming before the School Board but will be encouraged to give their opinion and point of view to board members prior to the School Board voting on any matters coming before them in a public forum (executive sessions are not included).

Process of applying

The student representative must be at least a sophomore (10th grade level), at the time of application.

The Mancos School Board will annually develop an application and make these available to interested students by April 1st.

The Mancos School Board Clerk will collect completed applications and forward them to the School Board not later than April 30th.

The School Board will review completed applications and interview candidates.

Successful candidate will be announced at the May board meeting, seated at the August board meeting, and serve a 10-month term.

During the course of an academic year, the Mancos School Board will reserve the right to appoint, or remove, any student board representative holding a seat for any reasonable accommodation or justification.

Adoption Date: August 19, 2024

Reviewed and Revised: June 9, 2025

JJA-3R Student Member of the School Board

The ~~Student representative~~ **Member** to the School Board will:

- Represent the student voice and perspective of all students enrolled in Mancos High School to the School Board, Superintendent, and leadership team.
- Actively solicit ideas and input from various student stakeholder groups within the school district.
- Actively interact and communicate with various student stakeholder groups to help explain the roles and responsibilities of the Board.
- Actively interact with various student stakeholder groups to help communicate board policies and actions that impact student life in the school district.
- Consistently attend and participate in School Board meetings and work sessions. **Student Members will be given the option to leave at 8:00 pm.**
- Communicate in a timely fashion with the Board when the student representative is not able to be present at meetings.
- Represent themselves in a professional and positive manner to all stakeholders within Mancos RE-6 school District, (parents, community, school board, RE-6 staff, etc.)

Student representative(s) will not be allowed to vote on matters coming before the School Board but will be encouraged to give their opinion and point of view to board members prior to the School Board voting on any matters coming before them in a public forum (executive sessions are not included).

Process of applying

The student representative(s) must be at least a sophomore (10th grade level), at the time of application.

The Mancos School Board will annually develop an application and make these available to interested students by April 1st.

The Mancos School Board ~~Clerk~~ Secretary will collect completed applications and forward them to the School Board not later than ~~April 30th~~ **August 31st.**

~~The School Board~~ **A committee composed of the superintendent, a teacher liaison and a Board member** will review completed applications and interview candidates.

Successful candidate(s) will be ~~announced~~ **recommended by the superintendent** at the ~~May~~ **September** board meeting, ~~seated at the August board meeting,~~ and ~~serve a 10-month term.~~ **and confirmed by a board vote.**

During the course of an academic year, the Mancos School Board will reserve the right to appoint, or remove, any student board representative holding a seat for any reasonable accommodation or justification.

Adoption Date: August 19, 2024

~~**Reviewed and Revised: June 9, 2025**~~

Reviewed and Revised:

BC – 09 - School Board Conduct

Student Member of the School Board

Nonvoting student representative(s) to the Board of Education will be selected each year by a vote of the school board. Student applications will be accepted in the first month of each school year and will undergo an interview process by the Board. Once selected, the student(s) will be seated on or before October 1. The term shall be concluded on or before the end of the school calendar year.

The student may participate in Board discussions of agenda items at regular meetings and work sessions. The student will express their thoughts and opinions on action items but will not cast a formal vote. However, the student shall be excluded from attendance at executive sessions.

Specifics relative to qualifications, academic standing, reporting and responsibilities shall be set forth in policy JJA-3R.

The Board reserves the right to bar the participation of the student member if actions of the student member are unacceptable to the Board.

Adopted : June 9, 2025

Reviewed and Revised:

BC – 09 - School Board Conduct

Student Member of the School Board

Nonvoting student representative(s) to the Board of Education will be selected each year by a vote of the school board. Student applications will be accepted in the first month of each school year and will undergo an **interview review** process by the Board. ~~Once selected, the student(s) will be seated on or before October 1.~~ The term shall be concluded on or before the end of the school calendar year.

The student may participate in Board discussions of agenda items at regular meetings and work sessions. The student will express their thoughts and opinions on action items but will not cast a formal vote. However, the student shall be excluded from attendance at executive sessions.

Specifics relative to qualifications, academic standing, reporting and responsibilities shall be set forth in policy JJA-3R.

The Board reserves the right to bar the participation of the student member if actions of the student member are unacceptable to the Board.

Adopted : June 9, 2025

Reviewed and Revised:

2070: Mancos Re-6

Grade Levels: EMH - (3 Year)

Accreditation Rating
Official Rating based on MULTI-YEAR DPF Report
Insufficient State Data
0.0/0
 Points Earned

The performance framework evaluates district and school performance on Academic Achievement, Academic Growth, and Postsecondary & Workforce Readiness indicators. The percentage of points earned across all indicators determines the final accreditation rating for a district or the final plan type for a school, which is displayed above. The cut points for final ratings established by the State Board of Education are shown at the right of this page. Failure to meet finance, assessment, and safety assurances may result in a lowered rating. Refer to the scoring guide near the end of this report for more details on how ratings are determined.

Distinction

Accredited

Improvement

Priority Imp.

Turnaround

Accreditation categories are based on the total percentage of points earned.

Accredited with Distinction:
 74.0% - 100%

Accredited:
 56.0% - 73.9%

Accredited with Improvement Plan:
 44.0% - 55.9%

Accredited with Priority Improvement Plan:
 34.0% - 43.9%

Accredited with Turnaround Plan:
 0.0% - 33.9%

Insufficient State Data:
 No reportable achievement and growth data.

Indicator Rating Totals

Performance Indicator	Percent of Points Earned	Points Earned/Eligible	Rating
Academic Achievement	53.4%	16.0/30	Approaching
Academic Growth	52.1%	20.8/40	Approaching
Postsecondary & Workforce Readiness	69.0%	20.7/30	Meets

Assurances

	Rating
Participation	Does Not Meet 95%
Finance	Meets Requirements
Safety	Meets Requirements

Test Participation Rates and Total Participation Rate Descriptor*

Subject	Total Records	Valid Scores	Total Participation		Accountability Participation Rate	Rating
			Rate	Parent Excusals		
English Language Arts	1,002	369	36.8%	604	92.7%	Does Not Meet 95%
Math	1,002	369	36.8%	604	92.7%	Does Not Meet 95%

Total Participation Rate Descriptor for Planning Purposes:	Does Not Meet 95% Total Participation
---	--

Summary of Ratings by EMH Level

EMH Level	Performance Indicator	Percent of Points Earned	Points Earned/Eligible	Rating	Points by Level	Overall Rating by Level
Elementary	Academic Achievement	50.0%	20.0/40	Approaching	50.0%	Improvement
	Academic Growth	50.0%	30.0/60	Approaching		
Middle	Academic Achievement	62.5%	25.0/40	Meets	62.5%	Accredited
	Academic Growth	-	0.0/0	-		
High	Academic Achievement	48.8%	14.6/30	Approaching	56.3%	Accredited
	Academic Growth	52.5%	21.0/40	Approaching		
	Postsecondary & Workforce Readiness	69.0%	20.7/30	Meets		

(-) No Reportable Data

*State accountability policy requires 95% student participation in state assessments. Students excused from testing by a parent or guardian do not impact the Accountability Participation Rate that determines whether the overall rating is reduced by one level. Districts or schools with less than 95% total participation in ELA and Math receive a "Does Not Meet 95% Total Participation" descriptor that is informational and does not impact framework calculations. The descriptor does not impact framework calculations. First-year in the U.S. Multilingual Learners eligible to take the ELP assessment count as participants for ELA.

2070: Mancos Re-6

Elementary School - (3 Year)

ACADEMIC ACHIEVEMENT

Subject	Student Group	Count	Participation Rate	Mean Scale Score	Percentile Rank	Pts Earned/ Eligible	Rating
CMAS - English Language Arts	All Students	25	8.4%	729.0	26	4.00/8	Approaching
	Previously Identified for READ Plan	n < 16	-	-	-	0.00/0	-
	Free/Reduced-Price Lunch Eligible	n < 16	-	-	-	0.00/0	-
	Minority Students	n < 16	-	-	-	0.00/0	-
	Multilingual Learners	n < 16	-	-	-	0.00/0	-
	Students with Disabilities	n < 16	-	-	-	0.00/0	-
CMAS - Math	All Students	25	8.4%	732.8	45	4.00/8	Approaching
	Free/Reduced-Price Lunch Eligible	n < 16	-	-	-	0.00/0	-
	Minority Students	n < 16	-	-	-	0.00/0	-
	Multilingual Learners	n < 16	-	-	-	0.00/0	-
	Students with Disabilities	n < 16	-	-	-	0.00/0	-
CMAS - Science	All Students	n < 16	-	-	-	0.00/0	-
	Free/Reduced-Price Lunch Eligible	n < 16	-	-	-	0.00/0	-
	Minority Students	n < 16	-	-	-	0.00/0	-
	Multilingual Learners	n < 16	-	-	-	0.00/0	-
	Students with Disabilities	n < 16	-	-	-	0.00/0	-
TOTAL		*	*	*	*	8.00/16	Approaching

ACADEMIC GROWTH

Subject	Student Group	Count	Median Growth Percentile/Rate	Pts Earned/ Eligible	Rating
CMAS - English Language Arts	All Students	n < 20	-	0.00/0	-
	Free/Reduced-Price Lunch Eligible	n < 20	-	0.00/0	-
	Minority Students	n < 20	-	0.00/0	-
	Multilingual Learners	n < 20	-	0.00/0	-
	Students with Disabilities	n < 20	-	0.00/0	-
CMAS - Math	All Students	n < 20	-	0.00/0	-
	Free/Reduced-Price Lunch Eligible	n < 20	-	0.00/0	-
	Minority Students	n < 20	-	0.00/0	-
	Multilingual Learners	n < 20	-	0.00/0	-
	Students with Disabilities	n < 20	-	0.00/0	-
English Language Proficiency	English Language Proficiency	32	36.0	1.00/2	Approaching
	On Track to EL Proficiency	32	53.1%	1.00/2	Approaching
TOTAL		*	*	2.00/4	Approaching

This page displays the performance indicator data for the elementary school level. For the 1-year report, calculations are based on 2025 state assessment results. Multi-year reports include 2023 through 2025 results.

Academic Achievement: mean scale scores represent outcomes for designated subjects and student groups; participation rates included on this page count parent excusals as non-participants.

Academic Growth: median student growth percentiles and percentages of students on track to meet targets represent outcomes for designated subjects and student groups.

For additional information regarding Academic Achievement and Academic Growth points, cut-points, and ratings, refer to the scoring guide at the end of this document.

Multilingual Learners describes students that are Non-English Proficient (NEP), Limited English Proficient (LEP), and Fluent English Proficient (FEP) - Monitor Year 1, Monitor Year 2, Exited Year 1, & Exited Year 2.

(*) Not Applicable; (-) No Reportable Data

2070: Mancos Re-6

Middle School - (3 Year)

ACADEMIC ACHIEVEMENT

Subject	Student Group	Count	Participation Rate	Mean Scale Score	Percentile Rank	Pts Earned/ Eligible	Rating
CMAS - English Language Arts	All Students	16	4.6%	740.0	49	4.00/8	Approaching
	Free/Reduced-Price Lunch Eligible	n < 16	-	-	-	0.00/0	-
	Minority Students	n < 16	-	-	-	0.00/0	-
	Multilingual Learners	n < 16	-	-	-	0.00/0	-
	Students with Disabilities	n < 16	-	-	-	0.00/0	-
CMAS - Math	All Students	16	4.6%	733.8	58	6.00/8	Meets
	Free/Reduced-Price Lunch Eligible	n < 16	-	-	-	0.00/0	-
	Minority Students	n < 16	-	-	-	0.00/0	-
	Multilingual Learners	n < 16	-	-	-	0.00/0	-
	Students with Disabilities	n < 16	-	-	-	0.00/0	-
CMAS - Science	All Students	n < 16	-	-	-	0.00/0	-
	Free/Reduced-Price Lunch Eligible	n < 16	-	-	-	0.00/0	-
	Minority Students	n < 16	-	-	-	0.00/0	-
	Multilingual Learners	n < 16	-	-	-	0.00/0	-
	Students with Disabilities	n < 16	-	-	-	0.00/0	-
TOTAL		*	*	*	*	10.00/16	Meets

ACADEMIC GROWTH

Subject	Student Group	Count	Median Growth Percentile/Rate	Pts Earned/ Eligible	Rating
CMAS - English Language Arts	All Students	n < 20	-	0.00/0	-
	Free/Reduced-Price Lunch Eligible	n < 20	-	0.00/0	-
	Minority Students	n < 20	-	0.00/0	-
	Multilingual Learners	n < 20	-	0.00/0	-
	Students with Disabilities	n < 20	-	0.00/0	-
CMAS - Math	All Students	n < 20	-	0.00/0	-
	Free/Reduced-Price Lunch Eligible	n < 20	-	0.00/0	-
	Minority Students	n < 20	-	0.00/0	-
	Multilingual Learners	n < 20	-	0.00/0	-
	Students with Disabilities	n < 20	-	0.00/0	-
English Language Proficiency	English Language Proficiency	n < 20	-	0.00/0	-
	On Track to EL Proficiency	n < 20	-	0.00/0	-
TOTAL		*	*	0.00/0	-

This page displays the performance indicator data for the middle school level. For the 1-year report, calculations are based on 2025 state assessment results. Multi-year reports include 2023 through 2025 results.

Academic Achievement: mean scale scores represent outcomes for designated subjects and student groups; participation rates included on this page count parent excusals as non-participants.

Academic Growth: median student growth percentiles and percentages of students on track to meet targets represent outcomes for designated subjects and student groups.

For additional information regarding Academic Achievement and Academic Growth points, cut-points, and ratings, refer to the scoring guide at the end of this document.

Multilingual Learners describes students that are Non-English Proficient (NEP), Limited English Proficient (LEP), and Fluent English Proficient (FEP) - Monitor Year 1, Monitor Year 2, Exited Year 1, & Exited Year 2.

(*) Not Applicable; (-) No Reportable Data

2070: Mancos Re-6

High School - (3 Year)

ACADEMIC ACHIEVEMENT

Subject	Student Group	Count	Participation Rate	Mean Scale Score	Percentile Rank	Pts Earned/ Eligible	Rating
CO PSAT - Reading & Writing	All Students	220	95.7%	443.4	36	4.00/8	Approaching
	Free/Reduced-Price Lunch Eligible	106	96.4%	423.4	20	0.50/1	Approaching
	Minority Students	53	93.2%	423.0	20	0.50/1	Approaching
	Multilingual Learners	n < 16	-	-	-	0.00/0	-
	Students with Disabilities	n < 16	-	-	-	0.00/0	-
CO PSAT - Math	All Students	221	95.7%	407.2	25	4.00/8	Approaching
	Free/Reduced-Price Lunch Eligible	107	96.4%	388.2	11	0.25/1	Does Not Meet
	Minority Students	54	93.2%	400.9	19	0.50/1	Approaching
	Multilingual Learners	n < 16	-	-	-	0.00/0	-
	Students with Disabilities	n < 16	-	-	-	0.00/0	-
CMAS - Science	All Students	n < 16	-	-	-	0.00/0	-
	Free/Reduced-Price Lunch Eligible	n < 16	-	-	-	0.00/0	-
	Minority Students	n < 16	-	-	-	0.00/0	-
	Multilingual Learners	n < 16	-	-	-	0.00/0	-
	Students with Disabilities	n < 16	-	-	-	0.00/0	-
TOTAL		*	*	*	*	9.75/20	Approaching

ACADEMIC GROWTH

Subject	Student Group	Count	Median Growth Percentile/Rate	Pts Earned/ Eligible	Rating
CO PSAT/SAT - Reading & Writing	All Students	193	46.0	4.00/8	Approaching
	Free/Reduced-Price Lunch Eligible	98	45.5	0.50/1	Approaching
	Minority Students	46	60.5	0.75/1	Meets
	Multilingual Learners	n < 20	-	0.00/0	-
	Students with Disabilities	n < 20	-	0.00/0	-
CO PSAT/SAT - Math	All Students	201	45.0	4.00/8	Approaching
	Free/Reduced-Price Lunch Eligible	101	47.0	0.50/1	Approaching
	Minority Students	47	52.0	0.75/1	Meets
	Multilingual Learners	n < 20	-	0.00/0	-
	Students with Disabilities	n < 20	-	0.00/0	-
English Language Proficiency	English Language Proficiency	n < 20	-	0.00/0	-
	On Track to EL Proficiency	n < 20	-	0.00/0	-
TOTAL		*	*	10.50/20	Approaching

This page displays the performance indicator data for the high school level. For the 1-year report, calculations are based on 2025 state assessment results. Multi-year reports include 2023 through 2025 results. PSAT/SAT cut scores for the multi-year reports were renormed based on 2025 results.

Academic Achievement: mean scale scores represent outcomes for designated subjects and student groups; participation rates included on this page count parent excusals as non-participants. .

Academic Growth: median student growth percentiles and percentages of students on track to meet targets represent outcomes for designated subjects and student groups.

For additional information regarding Academic Achievement and Academic Growth points, cut-points, and ratings, refer to the scoring guide at the end of this document.

Multilingual Learners describes students that are Non-English Proficient (NEP), Limited English Proficient (LEP), and Fluent English Proficient (FEP) - Monitor Year 1, Monitor Year 2, Exited Year 1, & Exited Year 2.

(*) Not Applicable; (-) No Reportable Data

2070: Mancos Re-6

High School - (3 Year)

POSTSECONDARY AND WORKFORCE READINESS

Subject	Student Group	Count	Best Rate	Rate/Score	Participation Rate	Pts Earned/Eligible	Rating
CO SAT - Reading & Writing	All Students	101	*	476.4	94.4%	2.00/4	Approaching
	Free/Reduced-Price Lunch Eligible	49	*	455.9	92.5%	0.50/1	Approaching
	Minority Students	24	*	462.1	85.7%	0.50/1	Approaching
	Multilingual Learners	n < 16	*	-	-	0.00/0	-
	Students with Disabilities	n < 16	*	-	-	0.00/0	-
CO SAT - Math	All Students	101	*	436.0	94.4%	2.00/4	Approaching
	Free/Reduced-Price Lunch Eligible	49	*	417.3	92.5%	0.25/1	Does Not Meet
	Minority Students	24	*	440.4	85.7%	0.50/1	Approaching
	Multilingual Learners	n < 16	*	-	-	0.00/0	-
	Students with Disabilities	n < 16	*	-	-	0.00/0	-
Dropout Rate	All Students	773	*	1.4%	*	6.00/8	Meets
	Free/Reduced-Price Lunch Eligible	342	*	1.2%	*	1.50/2	Meets
	Minority Students	199	*	2.5%	*	1.00/2	Approaching
	Multilingual Learners	52	*	5.8%	*	0.50/2	Does Not Meet
	Students with Disabilities	72	*	1.4%	*	1.50/2	Meets
Matriculation Rate	All Students	99	*	59.6%	*	2.00/4	Approaching
	2 Year	*	*	14.1%	*	0.00/0	-
	4 Year	*	*	38.4%	*	0.00/0	-
	CTE	*	*	16.2%	*	0.00/0	-
	Military	*	*	1.0%	*	0.00/0	-
Postsecondary Program	*	*	0.0%	*	0.00/0	-	
Graduation Rate	All Students	30	7yr	100.0%	*	8.00/8	Exceeds
	Free/Reduced-Price Lunch Eligible	17	7yr	100.0%	*	2.00/2	Exceeds
	Minority Students	17	6yr	100.0%	*	2.00/2	Exceeds
	Multilingual Learners	n < 16	-	-	*	0.00/0	-
	Students with Disabilities	16	4yr	87.5%	*	1.50/2	Meets
TOTAL		*	*	*	*	31.75/46	Meets

REFERENCE TABLE: DISAGGREGATED GRADUATION RATES

Student Group	4-Year Rate	5-Year Rate	6-Year Rate	7-Year Rate	Best Rate
All Students	91.3%	93.9%	95.4%	100.0%	7yr
Free/Reduced-Price Lunch Eligible	90.4%	94.5%	97.4%	100.0%	7yr
Minority Students	91.9%	100.0%	100.0%	-	6yr
Multilingual Learners	-	-	-	-	-
Students with Disabilities	87.5%	-	-	-	4yr

CO SAT: represent outcomes for designated subjects and student groups; participation rates count parent excusals as non-participants. For the 1-year report, calculations are based on 2025 state assessment results. Multi-year reports include 2023-2025 results. Cut-scores for the multi-year reports were re-normed based on 2025 results.

Dropout Rates: represent percentages of students enrolled in grades 7-12 for districts and 9-12 for schools at any time during the year who left and did not subsequently enroll in another Colorado school. 1-Year calculations are based on the 2024 End of Year (EOY) data submission. Multi-year reports include 2022 through 2024 records.

Matriculation Rates: represent percentages of high school graduates with a qualifying credential, enrollment, or enlistment status in a Career & Technical Education (CTE) program, a 2- or 4-year institute of higher education, a branch of the military, or a postsecondary program. Beginning in 2024, high school graduates who were enrolled in ASCENT, P-TECH, or TREP programs (i.e., Postsecondary Program) during their 5th year of high school count as successes. 1-Year calculations are based on the 2024 graduation cohort. Multi-year reports include 2022 through 2024 records.

Graduation Rates: represent percentages of students graduating high school within designated timeframes. Ratings are based on the best of the 4-, 5-, 6-, and 7-year graduation rates. AYGs designate Anticipated Years of Graduation, which are defined as four years after the year that students initially enroll in 9th grade. Calculations for 1-Year and Multi-Year reports are based on data for students with AYGs between 2021 and 2024.

For additional information about ratings, refer to the scoring guide on the last page of this report.

Multilingual Learners describes students that are Non-English Proficient (NEP), Limited English Proficient (LEP), and Fluent English Proficient (FEP) - Monitor Year 1, Monitor Year 2, Exited Year 1, & Exited Year 2.

(*) Not Applicable; (-) No Reportable Data

Scoring Guide for 2025 District/School Performance Frameworks

Performance Indicator	Measure/Metric	Rating	Point Value			
Academic Achievement & ELP On Track Growth	Mean Scale Score was:		All Students	Each Disaggregated Group	ELP On Track Growth	
	• at or above the 85th percentile	Exceeds	8	1.00	2.0	
	• at or above the 50th percentile but below the 85th percentile	Meets	6	0.75	1.5	
	• at or above the 15th percentile but below the 50th percentile	Approaching	4	0.50	1.0	
	• below the 15th percentile	Does Not Meet	2	0.25	0.5	
	Students Previously Identified for a READ Plan (bonus point)			1 bonus point		
• CMAS ELA Mean scale score at or above 725 (Approaching Expectations cut-score)						
Academic Growth	Median Growth Percentile was:		All Students	Each Disaggregated Group	ELP	
	• at or above 65	Exceeds	8	1.00	2.0	
	• at or above 50 but below 65	Meets	6	0.75	1.5	
	• at or above 35 but below 50	Approaching	4	0.50	1.0	
	• below 35	Does Not Meet	2	0.25	0.5	
Postsecondary and Workforce Readiness	Mean CO SAT Reading and Writing (EBRW) scale score was**:		All Students	Each Disaggregated Group		
		1-Year	3-Year			
	• at or above	553.1	553.6	4	1.00	
	• below previous cut but at or above	494.6	496.4	3	0.75	
	• below previous cut but at or above	448.1	455.8	2	0.50	
	• below	448.1	455.8	1	0.25	
	Mean CO SAT Math scale score was**:	1-Year	3-Year	All Students	Each Disaggregated Group	
	• at or above	527.0	523.3	4	1.00	
	• below previous cut but at or above	465.8	466.0	3	0.75	
	• below previous cut but at or above	423.3	426.4	2	0.50	
	• below	423.3	426.4	1	0.25	
	Dropout Rate: The district or school dropout rate was (of all schools in 2017):			All Students	Each Disaggregated Group	
	• at or below 0.5%	Exceeds	8	2.0		
	• at or below 2.0% but above 0.5%	Meets	6	1.5		
	• at or below 5.0% but above 2.0%	Approaching	4	1.0		
	• above 5.0%	Does Not Meet	2	0.5		
	Matriculation Rate (of all schools in 2018):			All Students		
	• at or above the 75.8%	Exceeds	4			
	• at or above 61.1% but below 75.8%	Meets	3			
	• at or above 46.8% but below 61.1%	Approaching	2			
	• below 46.8%	Does Not Meet	1			
	Graduation Rate and Disaggregated Graduation Rate (Best of 4-, 5-, 6-, or 7-year):			All Students	Each Disaggregated Group	
	• at or above 95.0%	Exceeds	8	2.0		
• at or above 85.0% but below 95.0%	Meets	6	1.5			
• at or above 75.0% but below 85.0%	Approaching	4	1.0			
• below 75.0%	Does Not Meet	2	0.5			

Academic Achievement: Mean Scale Score by Percentile Cut-Points

The Academic Achievement Indicator reflects achievement as measured by the mean scale score on Colorado's standardized assessments. The presented targets for the Achievement Indicators have been established utilizing baseline year data.*

Percentile	English Language Arts & Reading & Writing for CO PSAT				Mathematics				Science		
	Elementary	Middle	CO PSAT 1-Year	CO PSAT 3-Year	Elementary	Middle	CO PSAT 1-Year	CO PSAT 3-Year	Elem	Middle	High
15th percentile	722.3	724.1	415.1	416.8	719.1	716.5	387.4	393.4	717.9	714.2	721.4
50th percentile	739.5	740.1	458.9	456.7	734.3	731.2	430.2	431.4	736.9	732.8	734.6
85th percentile	755.9	757.3	505.0	508.0	751.9	746.2	480.4	480.5	753.2	749.3	746.4

Percent of Students On Track for ELP Growth Targets

Percentile	ELP On Track Growth		
	Elem	Middle	High
15th percentile	52.1%	13.8%	14.1%
50th percentile	64.4%	24.2%	22.7%
85th percentile	76.7%	37.3%	35.1%

Total Possible Points by Performance Indicator

Indicator	Total Possible Points	Elementary/Middle	High/District
Achievement	36 points (8 per subject for all students, 4 per subject by disaggregated group)	40%	30%
Growth	28 total points (8 per subject for all students, 4 per subject by disaggregated group, 2 for ELP growth, 2 for ELP On Track Growth)	60%	40%
Postsecondary Readiness	52 total points (16 for graduation, 4 for matriculation, 16 for dropout, 8 per CO SAT subject)	not applicable	30%

Cut-Points for Each Performance Indicator

Achievement; Growth; Postsecondary Readiness	Cut-Point: The district or school earned...of points eligible	Rating
Achievement; Growth; Postsecondary Readiness	• at or above 87.5%	Exceeds
	• at or above 62.5% but below 87.5%	Meets
	• at or above 37.5% but below 62.5%	Approaching
	• below 37.5%	Does Not Meet

Cut-Points for Plan/Category Type Assignment

Total Framework Points	District	School	Accreditation Category/Plan Type
	74.0%	not applicable	Accredited w/Distinction (District only)
	56.0%	53.0%	Accredited (District) or Performance Plan (School)
	44.0%	42.0%	Accredited w/Improvement Plan (District) or Improvement Plan (School)
	34.0%	34.0%	Accredited w/Priority Improvement Plan (District) or Priority Improvement (School)
	25.0%	25.0%	Accredited w/Turnaround Plan(District) or Turnaround Plan (School)

* School data used as baseline: 2016 for CMAS & CoAlt ELA & Math (g3-8). 2024 for 1yr and 2025 for 3yr CO PSAT & CoAlt EBRW/ELA & Math (g9-10). 2024 for CMAS and CoAlt Science (g5, 8, 11). 2024 for ELP On Track to Proficiency Growth as planned prior to the COVID-19 pandemic.

** 2024 school data used as baseline for 1 yr CO SAT & CoAlt EBRW/ELA & Math (g11) and 2025 data for 3yr.

5446: Mancos Elementary School | 2070: Mancos Re-6

Grade Levels: E - (3 Year)

Plan Type
Official Rating based on MULTI-YEAR SPF Report
Insufficient State Data
0.0/0
 Points Earned

The performance framework evaluates district and school performance on Academic Achievement, Academic Growth, and Postsecondary & Workforce Readiness indicators. The percentage of points earned across all indicators determines the final accreditation rating for a district or the final plan type for a school, which is displayed above. The cut points for final ratings established by the State Board of Education are shown at the right of this page. Failure to meet finance, assessment, and safety assurances may result in a lowered rating. Refer to the scoring guide near the end of this report for more details on how ratings are determined.

Performance

Improvement

Priority Imp.

Turnaround

School plan types are based on the total percentage of points earned.

Performance Plan:
 53.0% - 100%

Improvement Plan:
 42.0% - 52.9%

Priority Improvement Plan:
 34.0% - 41.9%

Turnaround Plan:
 0.0% - 33.9%

Insufficient State Data:
 No reportable achievement and growth data.

Indicator Rating Totals

Performance Indicator	Percent of Points Earned	Points Earned/ Eligible	Rating
Academic Achievement	50.0%	20.0/40	Approaching
Academic Growth	50.0%	30.0/60	Approaching

Assurances

	Rating
Participation	Does Not Meet 95%

Test Participation Rates and Total Participation Rate Descriptor*

Subject	Total Records	Valid Scores	Total Participation		Accountability Participation		Rating
			Rate	Parent Excusals	Rate	Rate	
English Language Arts	311	26	8.4%	279	81.3%	Does Not Meet 95%	
Math	311	26	8.4%	279	81.3%	Does Not Meet 95%	

Total Participation Rate Descriptor for Planning Purposes:	Does Not Meet 95% Total Participation
---	--

Summary of Ratings by EMH Level

EMH Level	Performance Indicator	Percent of Points Earned	Points Earned/ Eligible	Rating	Points by Level	Overall Rating by Level
Elementary	Academic Achievement	50.0%	20.0/40	Approaching	50.0%	Improvement
	Academic Growth	50.0%	30.0/60	Approaching		

(-) No Reportable Data

*State accountability policy requires 95% student participation in state assessments. Students excused from testing by a parent or guardian do not impact the Accountability Participation Rate that determines whether the overall rating is reduced by one level. Districts or schools with less than 95% total participation in ELA and Math receive a "Does Not Meet 95% Total Participation" descriptor that is informational and does not impact framework calculations. The descriptor does not impact framework calculations. First-year in the U.S. Multilingual Learners eligible to take the ELP assessment count as participants for ELA.

5446: Mancos Elementary School | 2070: Mancos Re-6

Elementary School - (3 Year)

ACADEMIC ACHIEVEMENT

Subject	Student Group	Count	Participation Rate	Mean Scale Score	Percentile Rank	Pts Earned/ Eligible	Rating
CMAS - English Language Arts	All Students	25	8.4%	729.0	26	4.00/8	Approaching
	Previously Identified for READ Plan	n < 16	-	-	-	0.00/0	-
	Free/Reduced-Price Lunch Eligible	n < 16	-	-	-	0.00/0	-
	Minority Students	n < 16	-	-	-	0.00/0	-
	Multilingual Learners	n < 16	-	-	-	0.00/0	-
	Students with Disabilities	n < 16	-	-	-	0.00/0	-
CMAS - Math	All Students	25	8.4%	732.8	45	4.00/8	Approaching
	Free/Reduced-Price Lunch Eligible	n < 16	-	-	-	0.00/0	-
	Minority Students	n < 16	-	-	-	0.00/0	-
	Multilingual Learners	n < 16	-	-	-	0.00/0	-
	Students with Disabilities	n < 16	-	-	-	0.00/0	-
CMAS - Science	All Students	n < 16	-	-	-	0.00/0	-
	Free/Reduced-Price Lunch Eligible	n < 16	-	-	-	0.00/0	-
	Minority Students	n < 16	-	-	-	0.00/0	-
	Multilingual Learners	n < 16	-	-	-	0.00/0	-
	Students with Disabilities	n < 16	-	-	-	0.00/0	-
TOTAL		*	*	*	*	8.00/16	Approaching

ACADEMIC GROWTH

Subject	Student Group	Count	Median Growth Percentile/Rate	Pts Earned/ Eligible	Rating
CMAS - English Language Arts	All Students	n < 20	-	0.00/0	-
	Free/Reduced-Price Lunch Eligible	n < 20	-	0.00/0	-
	Minority Students	n < 20	-	0.00/0	-
	Multilingual Learners	n < 20	-	0.00/0	-
	Students with Disabilities	n < 20	-	0.00/0	-
CMAS - Math	All Students	n < 20	-	0.00/0	-
	Free/Reduced-Price Lunch Eligible	n < 20	-	0.00/0	-
	Minority Students	n < 20	-	0.00/0	-
	Multilingual Learners	n < 20	-	0.00/0	-
	Students with Disabilities	n < 20	-	0.00/0	-
English Language Proficiency	English Language Proficiency	32	36.0	1.00/2	Approaching
	On Track to EL Proficiency	32	53.1%	1.00/2	Approaching
TOTAL		*	*	2.00/4	Approaching

This page displays the performance indicator data for the elementary school level. For the 1-year report, calculations are based on 2025 state assessment results. Multi-year reports include 2023 through 2025 results.

Academic Achievement: mean scale scores represent outcomes for designated subjects and student groups; participation rates included on this page count parent excusals as non-participants.

Academic Growth: median student growth percentiles and percentages of students on track to meet targets represent outcomes for designated subjects and student groups.

For additional information regarding Academic Achievement and Academic Growth points, cut-points, and ratings, refer to the scoring guide at the end of this document.

Multilingual Learners describes students that are Non-English Proficient (NEP), Limited English Proficient (LEP), and Fluent English Proficient (FEP) - Monitor Year 1, Monitor Year 2, Exited Year 1, & Exited Year 2.

(*) Not Applicable; (-) No Reportable Data

Scoring Guide for 2025 District/School Performance Frameworks

Performance Indicator	Measure/Metric	Rating	Point Value			
Academic Achievement & ELP On Track Growth	Mean Scale Score was:		All Students	Each Disaggregated Group	ELP On Track Growth	
	• at or above the 85th percentile	Exceeds	8	1.00	2.0	
	• at or above the 50th percentile but below the 85th percentile	Meets	6	0.75	1.5	
	• at or above the 15th percentile but below the 50th percentile	Approaching	4	0.50	1.0	
	• below the 15th percentile	Does Not Meet	2	0.25	0.5	
	Students Previously Identified for a READ Plan (bonus point)			1 bonus point		
• CMAS ELA Mean scale score at or above 725 (Approaching Expectations cut-score)						
Academic Growth	Median Growth Percentile was:		All Students	Each Disaggregated Group	ELP	
	• at or above 65	Exceeds	8	1.00	2.0	
	• at or above 50 but below 65	Meets	6	0.75	1.5	
	• at or above 35 but below 50	Approaching	4	0.50	1.0	
	• below 35	Does Not Meet	2	0.25	0.5	
Postsecondary and Workforce Readiness	Mean CO SAT Reading and Writing (EBRW) scale score was**:		All Students	Each Disaggregated Group		
		1-Year	3-Year			
	• at or above	553.1	553.6	4	1.00	
	• below previous cut but at or above	494.6	496.4	3	0.75	
	• below previous cut but at or above	448.1	455.8	2	0.50	
	• below	448.1	455.8	1	0.25	
	Mean CO SAT Math scale score was**:	1-Year	3-Year	All Students	Each Disaggregated Group	
	• at or above	527.0	523.3	4	1.00	
	• below previous cut but at or above	465.8	466.0	3	0.75	
	• below previous cut but at or above	423.3	426.4	2	0.50	
	• below	423.3	426.4	1	0.25	
	Dropout Rate: The district or school dropout rate was (of all schools in 2017):			All Students	Each Disaggregated Group	
	• at or below 0.5%	Exceeds	8	2.0		
	• at or below 2.0% but above 0.5%	Meets	6	1.5		
	• at or below 5.0% but above 2.0%	Approaching	4	1.0		
	• above 5.0%	Does Not Meet	2	0.5		
	Matriculation Rate (of all schools in 2018):			All Students		
	• at or above the 75.8%	Exceeds	4			
	• at or above 61.1% but below 75.8%	Meets	3			
	• at or above 46.8% but below 61.1%	Approaching	2			
	• below 46.8%	Does Not Meet	1			
	Graduation Rate and Disaggregated Graduation Rate (Best of 4-, 5-, 6-, or 7-year):			All Students	Each Disaggregated Group	
	• at or above 95.0%	Exceeds	8	2.0		
• at or above 85.0% but below 95.0%	Meets	6	1.5			
• at or above 75.0% but below 85.0%	Approaching	4	1.0			
• below 75.0%	Does Not Meet	2	0.5			

Academic Achievement: Mean Scale Score by Percentile Cut-Points

The Academic Achievement Indicator reflects achievement as measured by the mean scale score on Colorado's standardized assessments. The presented targets for the Achievement Indicators have been established utilizing baseline year data.*

Percentile	English Language Arts & Reading & Writing for CO PSAT				Mathematics				Science		
	Elementary	Middle	CO PSAT 1-Year	CO PSAT 3-Year	Elementary	Middle	CO PSAT 1-Year	CO PSAT 3-Year	Elem	Middle	High
15th percentile	722.3	724.1	415.1	416.8	719.1	716.5	387.4	393.4	717.9	714.2	721.4
50th percentile	739.5	740.1	458.9	456.7	734.3	731.2	430.2	431.4	736.9	732.8	734.6
85th percentile	755.9	757.3	505.0	508.0	751.9	746.2	480.4	480.5	753.2	749.3	746.4

Percent of Students On Track for ELP Growth Targets

Percentile	ELP On Track Growth		
	Elem	Middle	High
15th percentile	52.1%	13.8%	14.1%
50th percentile	64.4%	24.2%	22.7%
85th percentile	76.7%	37.3%	35.1%

Total Possible Points by Performance Indicator

Indicator	Total Possible Points	Elementary/Middle	High/District
Achievement	36 points (8 per subject for all students, 4 per subject by disaggregated group)	40%	30%
Growth	28 total points (8 per subject for all students, 4 per subject by disaggregated group, 2 for ELP growth, 2 for ELP On Track Growth)	60%	40%
Postsecondary Readiness	52 total points (16 for graduation, 4 for matriculation, 16 for dropout, 8 per CO SAT subject)	not applicable	30%

Cut-Points for Each Performance Indicator

Achievement; Growth; Postsecondary Readiness	Cut-Point: The district or school earned...of points eligible	
	• at or above 87.5%	Exceeds
	• at or above 62.5% but below 87.5%	Meets
	• at or above 37.5% but below 62.5%	Approaching
	• below 37.5%	Does Not Meet

Cut-Points for Plan/Category Type Assignment

Total Framework Points	District	School	Accreditation Category/Plan Type
	74.0%	not applicable	Accredited w/Distinction (District only)
	56.0%	53.0%	Accredited (District) or Performance Plan (School)
	44.0%	42.0%	Accredited w/Improvement Plan (District) or Improvement Plan (School)
	34.0%	34.0%	Accredited w/Priority Improvement Plan (District) or Priority Improvement (School)
	25.0%	25.0%	Accredited w/Turnaround Plan(District) or Turnaround Plan (School)

* School data used as baseline: 2016 for CMAS & CoAlt ELA & Math (g3-8). 2024 for 1yr and 2025 for 3yr CO PSAT & CoAlt EBRW/ELA & Math (g9-10). 2024 for CMAS and CoAlt Science (g5, 8, 11). 2024 for ELP On Track to Proficiency Growth as planned prior to the COVID-19 pandemic.

** 2024 school data used as baseline for 1 yr CO SAT & CoAlt EBRW/ELA & Math (g11) and 2025 data for 3yr.

5450: Mancos Middle School | 2070: Mancos Re-6

Grade Levels: M - (3 Year)

Plan Type
Official Rating based on MULTI-YEAR SPF Report
Insufficient State Data
0.0/0
 Points Earned

The performance framework evaluates district and school performance on Academic Achievement, Academic Growth, and Postsecondary & Workforce Readiness indicators. The percentage of points earned across all indicators determines the final accreditation rating for a district or the final plan type for a school, which is displayed above. The cut points for final ratings established by the State Board of Education are shown at the right of this page. Failure to meet finance, assessment, and safety assurances may result in a lowered rating. Refer to the scoring guide near the end of this report for more details on how ratings are determined.

Performance

Improvement

Priority Imp.

Turnaround

School plan types are based on the total percentage of points earned.

Performance Plan:
 53.0% - 100%

Improvement Plan:
 42.0% - 52.9%

Priority Improvement Plan:
 34.0% - 41.9%

Turnaround Plan:
 0.0% - 33.9%

Insufficient State Data:
 No reportable achievement and growth data.

Indicator Rating Totals

Performance Indicator	Percent of Points Earned	Points Earned/Eligible	Rating
Academic Achievement	62.5%	25.0/40	Meets
Academic Growth	-	0.0/0	-

Assurances

	Rating
Participation	Does Not Meet 95%

Test Participation Rates and Total Participation Rate Descriptor*

Subject	Total Records	Valid Scores	Total Participation		Accountability Participation		Rating
			Rate	Parent Excusals	Rate	Rate	
English Language Arts	348	16	4.6%	325	69.6%	Does Not Meet 95%	
Math	348	16	4.6%	325	69.6%	Does Not Meet 95%	

Total Participation Rate Descriptor for Planning Purposes:	Does Not Meet 95% Total Participation
---	--

Summary of Ratings by EMH Level

EMH Level	Performance Indicator	Percent of Points Earned	Points Earned/Eligible	Rating	Points by Level	Overall Rating by Level
Middle	Academic Achievement	62.5%	25.0/40	Meets	62.5%	Performance
	Academic Growth	-	0.0/0	-		

(-) No Reportable Data

*State accountability policy requires 95% student participation in state assessments. Students excused from testing by a parent or guardian do not impact the Accountability Participation Rate that determines whether the overall rating is reduced by one level. Districts or schools with less than 95% total participation in ELA and Math receive a "Does Not Meet 95% Total Participation" descriptor that is informational and does not impact framework calculations. The descriptor does not impact framework calculations. First-year in the U.S. Multilingual Learners eligible to take the ELP assessment count as participants for ELA.

5450: Mancos Middle School | 2070: Mancos Re-6

Middle School - (3 Year)

ACADEMIC ACHIEVEMENT

Subject	Student Group	Count	Participation Rate	Mean Scale Score	Percentile Rank	Pts Earned/ Eligible	Rating
CMAS - English Language Arts	All Students	16	4.6%	740.0	49	4.00/8	Approaching
	Free/Reduced-Price Lunch Eligible	n < 16	-	-	-	0.00/0	-
	Minority Students	n < 16	-	-	-	0.00/0	-
	Multilingual Learners	n < 16	-	-	-	0.00/0	-
	Students with Disabilities	n < 16	-	-	-	0.00/0	-
CMAS - Math	All Students	16	4.6%	733.8	58	6.00/8	Meets
	Free/Reduced-Price Lunch Eligible	n < 16	-	-	-	0.00/0	-
	Minority Students	n < 16	-	-	-	0.00/0	-
	Multilingual Learners	n < 16	-	-	-	0.00/0	-
	Students with Disabilities	n < 16	-	-	-	0.00/0	-
CMAS - Science	All Students	n < 16	-	-	-	0.00/0	-
	Free/Reduced-Price Lunch Eligible	n < 16	-	-	-	0.00/0	-
	Minority Students	n < 16	-	-	-	0.00/0	-
	Multilingual Learners	n < 16	-	-	-	0.00/0	-
	Students with Disabilities	n < 16	-	-	-	0.00/0	-
TOTAL		*	*	*	*	10.00/16	Meets

ACADEMIC GROWTH

Subject	Student Group	Count	Median Growth Percentile/Rate	Pts Earned/ Eligible	Rating
CMAS - English Language Arts	All Students	n < 20	-	0.00/0	-
	Free/Reduced-Price Lunch Eligible	n < 20	-	0.00/0	-
	Minority Students	n < 20	-	0.00/0	-
	Multilingual Learners	n < 20	-	0.00/0	-
	Students with Disabilities	n < 20	-	0.00/0	-
CMAS - Math	All Students	n < 20	-	0.00/0	-
	Free/Reduced-Price Lunch Eligible	n < 20	-	0.00/0	-
	Minority Students	n < 20	-	0.00/0	-
	Multilingual Learners	n < 20	-	0.00/0	-
	Students with Disabilities	n < 20	-	0.00/0	-
English Language Proficiency	English Language Proficiency	n < 20	-	0.00/0	-
	On Track to EL Proficiency	n < 20	-	0.00/0	-
TOTAL		*	*	0.00/0	-

This page displays the performance indicator data for the middle school level. For the 1-year report, calculations are based on 2025 state assessment results. Multi-year reports include 2023 through 2025 results.

Academic Achievement: mean scale scores represent outcomes for designated subjects and student groups; participation rates included on this page count parent excusals as non-participants.

Academic Growth: median student growth percentiles and percentages of students on track to meet targets represent outcomes for designated subjects and student groups.

For additional information regarding Academic Achievement and Academic Growth points, cut-points, and ratings, refer to the scoring guide at the end of this document.

Multilingual Learners describes students that are Non-English Proficient (NEP), Limited English Proficient (LEP), and Fluent English Proficient (FEP) - Monitor Year 1, Monitor Year 2, Exited Year 1, & Exited Year 2.

(*) Not Applicable; (-) No Reportable Data

Scoring Guide for 2025 District/School Performance Frameworks

Performance Indicator	Measure/Metric	Rating	Point Value			
Academic Achievement & ELP On Track Growth	Mean Scale Score was:		All Students	Each Disaggregated Group	ELP On Track Growth	
	• at or above the 85th percentile	Exceeds	8	1.00	2.0	
	• at or above the 50th percentile but below the 85th percentile	Meets	6	0.75	1.5	
	• at or above the 15th percentile but below the 50th percentile	Approaching	4	0.50	1.0	
	• below the 15th percentile	Does Not Meet	2	0.25	0.5	
	Students Previously Identified for a READ Plan (bonus point)			1 bonus point		
• CMAS ELA Mean scale score at or above 725 (Approaching Expectations cut-score)						
Academic Growth	Median Growth Percentile was:		All Students	Each Disaggregated Group	ELP	
	• at or above 65	Exceeds	8	1.00	2.0	
	• at or above 50 but below 65	Meets	6	0.75	1.5	
	• at or above 35 but below 50	Approaching	4	0.50	1.0	
	• below 35	Does Not Meet	2	0.25	0.5	
Postsecondary and Workforce Readiness	Mean CO SAT Reading and Writing (EBRW) scale score was**:		All Students	Each Disaggregated Group		
		1-Year	3-Year			
	• at or above	553.1	553.6	4	1.00	
	• below previous cut but at or above	494.6	496.4	3	0.75	
	• below previous cut but at or above	448.1	455.8	2	0.50	
	• below	448.1	455.8	1	0.25	
	Mean CO SAT Math scale score was**:	1-Year	3-Year	All Students	Each Disaggregated Group	
	• at or above	527.0	523.3	4	1.00	
	• below previous cut but at or above	465.8	466.0	3	0.75	
	• below previous cut but at or above	423.3	426.4	2	0.50	
	• below	423.3	426.4	1	0.25	
	Dropout Rate: The district or school dropout rate was (of all schools in 2017):			All Students	Each Disaggregated Group	
	• at or below 0.5%	Exceeds	8	2.0		
	• at or below 2.0% but above 0.5%	Meets	6	1.5		
	• at or below 5.0% but above 2.0%	Approaching	4	1.0		
	• above 5.0%	Does Not Meet	2	0.5		
	Matriculation Rate (of all schools in 2018):			All Students		
	• at or above the 75.8%	Exceeds	4			
	• at or above 61.1% but below 75.8%	Meets	3			
	• at or above 46.8% but below 61.1%	Approaching	2			
	• below 46.8%	Does Not Meet	1			
	Graduation Rate and Disaggregated Graduation Rate (Best of 4-, 5-, 6-, or 7-year):			All Students	Each Disaggregated Group	
	• at or above 95.0%	Exceeds	8	2.0		
• at or above 85.0% but below 95.0%	Meets	6	1.5			
• at or above 75.0% but below 85.0%	Approaching	4	1.0			
• below 75.0%	Does Not Meet	2	0.5			

Academic Achievement: Mean Scale Score by Percentile Cut-Points

The Academic Achievement Indicator reflects achievement as measured by the mean scale score on Colorado's standardized assessments. The presented targets for the Achievement Indicators have been established utilizing baseline year data.*

Percentile	English Language Arts & Reading & Writing for CO PSAT				Mathematics				Science		
	Elementary	Middle	CO PSAT 1-Year	CO PSAT 3-Year	Elementary	Middle	CO PSAT 1-Year	CO PSAT 3-Year	Elem	Middle	High
15th percentile	722.3	724.1	415.1	416.8	719.1	716.5	387.4	393.4	717.9	714.2	721.4
50th percentile	739.5	740.1	458.9	456.7	734.3	731.2	430.2	431.4	736.9	732.8	734.6
85th percentile	755.9	757.3	505.0	508.0	751.9	746.2	480.4	480.5	753.2	749.3	746.4

Percent of Students On Track for ELP Growth Targets

Percentile	ELP On Track Growth		
	Elem	Middle	High
15th percentile	52.1%	13.8%	14.1%
50th percentile	64.4%	24.2%	22.7%
85th percentile	76.7%	37.3%	35.1%

Total Possible Points by Performance Indicator

Indicator	Total Possible Points	Elementary/Middle	High/District
Achievement	36 points (8 per subject for all students, 4 per subject by disaggregated group)	40%	30%
Growth	28 total points (8 per subject for all students, 4 per subject by disaggregated group, 2 for ELP growth, 2 for ELP On Track Growth)	60%	40%
Postsecondary Readiness	52 total points (16 for graduation, 4 for matriculation, 16 for dropout, 8 per CO SAT subject)	not applicable	30%

Cut-Points for Each Performance Indicator

Achievement; Growth; Postsecondary Readiness	Cut-Point: The district or school earned...of points eligible	Rating
Achievement; Growth; Postsecondary Readiness	• at or above 87.5%	Exceeds
	• at or above 62.5% but below 87.5%	Meets
	• at or above 37.5% but below 62.5%	Approaching
	• below 37.5%	Does Not Meet

Cut-Points for Plan/Category Type Assignment

Total Framework Points	District	School	Accreditation Category/Plan Type
	74.0%	not applicable	Accredited w/Distinction (District only)
	56.0%	53.0%	Accredited (District) or Performance Plan (School)
	44.0%	42.0%	Accredited w/Improvement Plan (District) or Improvement Plan (School)
	34.0%	34.0%	Accredited w/Priority Improvement Plan (District) or Priority Improvement (School)
	25.0%	25.0%	Accredited w/Turnaround Plan(District) or Turnaround Plan (School)

* School data used as baseline: 2016 for CMAS & CoAlt ELA & Math (g3-8). 2024 for 1yr and 2025 for 3yr CO PSAT & CoAlt EBRW/ELA & Math (g9-10). 2024 for CMAS and CoAlt Science (g5, 8, 11). 2024 for ELP On Track to Proficiency Growth as planned prior to the COVID-19 pandemic.

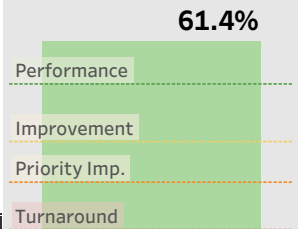
** 2024 school data used as baseline for 1 yr CO SAT & CoAlt EBRW/ELA & Math (g11) and 2025 data for 3yr.

5452: Mancos High School | 2070: Mancos Re-6

Grade Levels: H - (1 Year)

Plan Type
Official Rating based on SINGLE-YEAR SPF Report
Performance Plan
61.4/100
 Points Earned

The performance framework evaluates district and school performance on Academic Achievement, Academic Growth, and Postsecondary & Workforce Readiness indicators. The percentage of points earned across all indicators determines the final accreditation rating for a district or the final plan type for a school, which is displayed above. The cut points for final ratings established by the State Board of Education are shown at the right of this page. Failure to meet finance, assessment, and safety assurances may result in a lowered rating. Refer to the scoring guide near the end of this report for more details on how ratings are determined.


Indicator Rating Totals

Performance Indicator	Percent of Points Earned	Points Earned/ Eligible	Rating
Academic Achievement	48.8%	14.6/30	Approaching
Academic Growth	63.9%	25.6/40	Meets
Postsecondary & Workforce Readiness	70.8%	21.2/30	Meets

School plan types are based on the total percentage of points earned.

Performance Plan:
 53.0% - 100%

Assurances

Assurance	Rating
Participation	Meets 95% Participation

Improvement Plan:
 42.0% - 52.9%

Priority Improvement Plan:
 34.0% - 41.9%

Test Participation Rates and Total Participation Rate Descriptor*

Subject	Total Records	Valid Scores	Total Participation		Accountability Participation		Rating
			Rate	Parent Excusals	Rate	Rate	
English Language Arts	104	101	97.1%	0	97.1%	Meets 95% Participation	
Math	104	101	97.1%	0	97.1%	Meets 95% Participation	

Turnaround Plan:
 0.0% - 33.9%

Total Participation Rate Descriptor for Planning Purposes:	Meets 95% Total Participation
---	--------------------------------------

Insufficient State Data:
 No reportable achievement and growth data.

Summary of Ratings by EMH Level

EMH Level	Performance Indicator	Percent of Points Earned	Points Earned/ Eligible	Rating	Points by Level	Overall Rating by Level
High	Academic Achievement	48.8%	14.6/30	Approaching	61.4%	Performance
	Academic Growth	63.9%	25.6/40	Meets		
	Postsecondary & Workforce Readiness	70.8%	21.2/30	Meets		

(-) No Reportable Data

*State accountability policy requires 95% student participation in state assessments. Students excused from testing by a parent or guardian do not impact the Accountability Participation Rate that determines whether the overall rating is reduced by one level. Districts or schools with less than 95% total participation in ELA and Math receive a "Does Not Meet 95% Total Participation" descriptor that is informational and does not impact framework calculations. The descriptor does not impact framework calculations. First-year in the U.S. Multilingual Learners eligible to take the ELP assessment count as participants for ELA.

5452: Mancos High School | 2070: Mancos Re-6

High School - (1 Year)

ACADEMIC ACHIEVEMENT

Subject	Student Group	Count	Participation Rate	Mean Scale Score	Percentile Rank	Pts Earned/ Eligible	Rating
CO PSAT - Reading & Writing	All Students	66	98.5%	435.3	30	4.00/8	Approaching
	Free/Reduced-Price Lunch Eligible	31	96.9%	424.2	22	0.50/1	Approaching
	Minority Students	17	100.0%	420.0	18	0.50/1	Approaching
	Multilingual Learners	n < 16	-	-	-	0.00/0	-
	Students with Disabilities	n < 16	-	-	-	0.00/0	-
CO PSAT - Math	All Students	66	98.5%	399.1	23	4.00/8	Approaching
	Free/Reduced-Price Lunch Eligible	31	96.9%	377.7	9	0.25/1	Does Not Meet
	Minority Students	17	100.0%	392.9	18	0.50/1	Approaching
	Multilingual Learners	n < 16	-	-	-	0.00/0	-
	Students with Disabilities	n < 16	-	-	-	0.00/0	-
CMAS - Science	All Students	n < 16	-	-	-	0.00/0	-
	Free/Reduced-Price Lunch Eligible	n < 16	-	-	-	0.00/0	-
	Minority Students	n < 16	-	-	-	0.00/0	-
	Multilingual Learners	n < 16	-	-	-	0.00/0	-
	Students with Disabilities	n < 16	-	-	-	0.00/0	-
TOTAL		*	*	*	*	9.75/20	Approaching

ACADEMIC GROWTH

Subject	Student Group	Count	Median Growth Percentile/Rate	Pts Earned/ Eligible	Rating
CO PSAT/SAT - Reading & Writing	All Students	59	49.0	4.00/8	Approaching
	Free/Reduced-Price Lunch Eligible	29	51.0	0.75/1	Meets
	Minority Students	n < 20	-	0.00/0	-
	Multilingual Learners	n < 20	-	0.00/0	-
	Students with Disabilities	n < 20	-	0.00/0	-
CO PSAT/SAT - Math	All Students	61	50.0	6.00/8	Meets
	Free/Reduced-Price Lunch Eligible	30	51.5	0.75/1	Meets
	Minority Students	n < 20	-	0.00/0	-
	Multilingual Learners	n < 20	-	0.00/0	-
	Students with Disabilities	n < 20	-	0.00/0	-
English Language Proficiency	English Language Proficiency	n < 20	-	0.00/0	-
	On Track to EL Proficiency	n < 20	-	0.00/0	-
TOTAL		*	*	11.50/18	Meets

This page displays the performance indicator data for the high school level. For the 1-year report, calculations are based on 2025 state assessment results. Multi-year reports include 2023 through 2025 results. PSAT/SAT cut scores for the multi-year reports were renormed based on 2025 results.

Academic Achievement: mean scale scores represent outcomes for designated subjects and student groups; participation rates included on this page count parent excusals as non-participants. .

Academic Growth: median student growth percentiles and percentages of students on track to meet targets represent outcomes for designated subjects and student groups.

For additional information regarding Academic Achievement and Academic Growth points, cut-points, and ratings, refer to the scoring guide at the end of this document.

Multilingual Learners describes students that are Non-English Proficient (NEP), Limited English Proficient (LEP), and Fluent English Proficient (FEP) - Monitor Year 1, Monitor Year 2, Exited Year 1, & Exited Year 2.

(*) Not Applicable; (-) No Reportable Data

POSTSECONDARY AND WORKFORCE READINESS

Subject	Student Group	Count	Best Rate	Rate/Score	Participation Rate	Pts Earned/Eligible	Rating
CO SAT - Reading & Writing	All Students	34	*	503.5	94.4%	3.00/4	Meets
	Free/Reduced-Price Lunch Eligible	19	*	476.3	90.5%	0.50/1	Approaching
	Minority Students	n < 16	*	-	-	0.00/0	-
	Multilingual Learners	n < 16	*	-	-	0.00/0	-
	Students with Disabilities	n < 16	*	-	-	0.00/0	-
CO SAT - Math	All Students	34	*	443.5	94.4%	2.00/4	Approaching
	Free/Reduced-Price Lunch Eligible	19	*	426.8	90.5%	0.50/1	Approaching
	Minority Students	n < 16	*	-	-	0.00/0	-
	Multilingual Learners	n < 16	*	-	-	0.00/0	-
	Students with Disabilities	n < 16	*	-	-	0.00/0	-
Dropout Rate	All Students	166	*	1.2%	*	6.00/8	Meets
	Free/Reduced-Price Lunch Eligible	77	*	1.3%	*	1.50/2	Meets
	Minority Students	46	*	4.3%	*	1.00/2	Approaching
	Multilingual Learners	n < 16	*	-	*	0.00/0	-
	Students with Disabilities	n < 16	*	-	*	0.00/0	-
Matriculation Rate	All Students	35	*	45.7%	*	1.00/4	Does Not Meet
	2 Year	*	*	8.6%	*	0.00/0	-
	4 Year	*	*	31.4%	*	0.00/0	-
	CTE	*	*	8.6%	*	0.00/0	-
	Military	*	*	2.9%	*	0.00/0	-
	Postsecondary Program	*	*	0.0%	*	0.00/0	-
Graduation Rate	All Students	30	7yr	100.0%	*	8.00/8	Exceeds
	Free/Reduced-Price Lunch Eligible	17	7yr	100.0%	*	2.00/2	Exceeds
	Minority Students	n < 16	-	-	*	0.00/0	-
	Multilingual Learners	n < 16	-	-	*	0.00/0	-
	Students with Disabilities	n < 16	-	-	*	0.00/0	-
TOTAL		*	*	*	*	25.50/36	Meets

REFERENCE TABLE: DISAGGREGATED GRADUATION RATES

Student Group	4-Year Rate	5-Year Rate	6-Year Rate	7-Year Rate	Best Rate
All Students	89.5%	93.8%	91.4%	100.0%	7yr
Free/Reduced-Price Lunch Eligible	85.2%	-	95.5%	100.0%	7yr
Minority Students	-	-	-	-	-
Multilingual Learners	-	-	-	-	-
Students with Disabilities	-	-	-	-	-

CO SAT: represent outcomes for designated subjects and student groups; participation rates count parent excusals as non-participants. For the 1-year report, calculations are based on 2025 state assessment results. Multi-year reports include 2023-2025 results. Cut-scores for the multi-year reports were re-normed based on 2025 results.

Dropout Rates: represent percentages of students enrolled in grades 7-12 for districts and 9-12 for schools at any time during the year who left and did not subsequently enroll in another Colorado school. 1-Year calculations are based on the 2024 End of Year (EOY) data submission. Multi-year reports include 2022 through 2024 records.

Matriculation Rates: represent percentages of high school graduates with a qualifying credential, enrollment, or enlistment status in a Career & Technical Education (CTE) program, a 2- or 4-year institute of higher education, a branch of the military, or a postsecondary program. Beginning in 2024, high school graduates who were enrolled in ASCENT, P-TECH, or TREP programs (i.e., Postsecondary Program) during their 5th year of high school count as successes. 1-Year calculations are based on the 2024 graduation cohort. Multi-year reports include 2022 through 2024 records.

Graduation Rates: represent percentages of students graduating high school within designated timeframes. Ratings are based on the best of the 4-, 5-, 6-, and 7-year graduation rates. AYGs designate Anticipated Years of Graduation, which are defined as four years after the year that students initially enroll in 9th grade. Calculations for 1-Year and Multi-Year reports are based on data for students with AYGs between 2021 and 2024.

For additional information about ratings, refer to the scoring guide on the last page of this report.

Multilingual Learners describes students that are Non-English Proficient (NEP), Limited English Proficient (LEP), and Fluent English Proficient (FEP) - Monitor Year 1, Monitor Year 2, Exited Year 1, & Exited Year 2.

(*) Not Applicable; (-) No Reportable Data

Scoring Guide for 2025 District/School Performance Frameworks

Performance Indicator	Measure/Metric	Rating	Point Value			
Academic Achievement & ELP On Track Growth	Mean Scale Score was:		All Students	Each Disaggregated Group	ELP On Track Growth	
	• at or above the 85th percentile	Exceeds	8	1.00	2.0	
	• at or above the 50th percentile but below the 85th percentile	Meets	6	0.75	1.5	
	• at or above the 15th percentile but below the 50th percentile	Approaching	4	0.50	1.0	
	• below the 15th percentile	Does Not Meet	2	0.25	0.5	
	Students Previously Identified for a READ Plan (bonus point)			1 bonus point		
• CMAS ELA Mean scale score at or above 725 (Approaching Expectations cut-score)						
Academic Growth	Median Growth Percentile was:		All Students	Each Disaggregated Group	ELP	
	• at or above 65	Exceeds	8	1.00	2.0	
	• at or above 50 but below 65	Meets	6	0.75	1.5	
	• at or above 35 but below 50	Approaching	4	0.50	1.0	
	• below 35	Does Not Meet	2	0.25	0.5	
Postsecondary and Workforce Readiness	Mean CO SAT Reading and Writing (EBRW) scale score was**:		All Students	Each Disaggregated Group		
		1-Year	3-Year			
	• at or above	553.1	553.6	4	1.00	
	• below previous cut but at or above	494.6	496.4	3	0.75	
	• below previous cut but at or above	448.1	455.8	2	0.50	
	• below	448.1	455.8	1	0.25	
	Mean CO SAT Math scale score was**:	1-Year	3-Year	All Students	Each Disaggregated Group	
	• at or above	527.0	523.3	4	1.00	
	• below previous cut but at or above	465.8	466.0	3	0.75	
	• below previous cut but at or above	423.3	426.4	2	0.50	
	• below	423.3	426.4	1	0.25	
	Dropout Rate: The district or school dropout rate was (of all schools in 2017):			All Students	Each Disaggregated Group	
	• at or below 0.5%			8	2.0	
	• at or below 2.0% but above 0.5%			6	1.5	
	• at or below 5.0% but above 2.0%			4	1.0	
	• above 5.0%			2	0.5	
	Matriculation Rate (of all schools in 2018):			All Students		
	• at or above the 75.8%			4		
	• at or above 61.1% but below 75.8%			3		
	• at or above 46.8% but below 61.1%			2		
	• below 46.8%			1		
	Graduation Rate and Disaggregated Graduation Rate (Best of 4-, 5-, 6-, or 7-year):			All Students	Each Disaggregated Group	
	• at or above 95.0%			8	2.0	
• at or above 85.0% but below 95.0%			6	1.5		
• at or above 75.0% but below 85.0%			4	1.0		
• below 75.0%			2	0.5		

Academic Achievement: Mean Scale Score by Percentile Cut-Points

The Academic Achievement Indicator reflects achievement as measured by the mean scale score on Colorado's standardized assessments. The presented targets for the Achievement Indicators have been established utilizing baseline year data.*

Percentile	English Language Arts & Reading & Writing for CO PSAT				Mathematics				Science		
	Elementary	Middle	CO PSAT 1-Year	CO PSAT 3-Year	Elementary	Middle	CO PSAT 1-Year	CO PSAT 3-Year	Elem	Middle	High
15th percentile	722.3	724.1	415.1	416.8	719.1	716.5	387.4	393.4	717.9	714.2	721.4
50th percentile	739.5	740.1	458.9	456.7	734.3	731.2	430.2	431.4	736.9	732.8	734.6
85th percentile	755.9	757.3	505.0	508.0	751.9	746.2	480.4	480.5	753.2	749.3	746.4

Percent of Students On Track for ELP Growth Targets

Percentile	ELP On Track Growth		
	Elem	Middle	High
15th percentile	52.1%	13.8%	14.1%
50th percentile	64.4%	24.2%	22.7%
85th percentile	76.7%	37.3%	35.1%

Total Possible Points by Performance Indicator

Indicator	Total Possible Points	Elementary/Middle	High/District
Achievement	36 points (8 per subject for all students, 4 per subject by disaggregated group)	40%	30%
Growth	28 total points (8 per subject for all students, 4 per subject by disaggregated group, 2 for ELP growth, 2 for ELP On Track Growth)	60%	40%
Postsecondary Readiness	52 total points (16 for graduation, 4 for matriculation, 16 for dropout, 8 per CO SAT subject)	not applicable	30%

Cut-Points for Each Performance Indicator

Achievement; Growth; Postsecondary Readiness	Cut-Point: The district or school earned...of points eligible	Rating
Achievement; Growth; Postsecondary Readiness	• at or above 87.5%	Exceeds
	• at or above 62.5% but below 87.5%	Meets
	• at or above 37.5% but below 62.5%	Approaching
	• below 37.5%	Does Not Meet

Cut-Points for Plan/Category Type Assignment

Total Framework Points	District	School	Accreditation Category/Plan Type
	74.0%	not applicable	Accredited w/Distinction (District only)
	56.0%	53.0%	Accredited (District) or Performance Plan (School)
	44.0%	42.0%	Accredited w/Improvement Plan (District) or Improvement Plan (School)
	34.0%	34.0%	Accredited w/Priority Improvement Plan (District) or Priority Improvement (School)
	25.0%	25.0%	Accredited w/Turnaround Plan(District) or Turnaround Plan (School)

* School data used as baseline: 2016 for CMAS & CoAlt ELA & Math (g3-8). 2024 for 1yr and 2025 for 3yr CO PSAT & CoAlt EBRW/ELA & Math (g9-10). 2024 for CMAS and CoAlt Science (g5, 8, 11). 2024 for ELP On Track to Proficiency Growth as planned prior to the COVID-19 pandemic.

** 2024 school data used as baseline for 1 yr CO SAT & CoAlt EBRW/ELA & Math (g11) and 2025 data for 3yr.

MSD Board of Education Communication Plan

DRAFT 2025-26 School Year

Goals of Communication Plan

- Establish trust across and within district leadership and the Board of Education
- Ready us to engage in purposeful, effective and efficient work
- Build transparency in our work and communication
- Uphold consistent and predictable practices
- Foster a respectful and cohesive environment
- Ensure all voices are heard
- “Working document.” Reviewed regularly at Work Sessions, updated when necessary

Table of Contents

- [Purpose of Board](#)
- Structures to Support
 - [Communication Norms](#)
 - [Meeting Schedule](#)
 - Planning Calendar
 - Articulated Agenda Planning Process
 - Engagement and Communication Opportunities

Purpose of Board of Education


In the Mancos School District, the governance is provided by a Board of Education made up of individuals elected by the residents of our district. This Board is responsible for establishing and maintaining an educational system that aligns with the constitution and laws of the state of Colorado. Our school board members are dedicated community volunteers who generously contribute their time to oversee and support our public schools. The Mancos School District is governed by a five-member board.

Communication Norms

- **Use 7 Norms of Communication for goal setting, debriefing and growth**
 - [7 Norms of Collaboration, 7 Norms Annotated](#)
 - Work Session Suggested Protocol:
 - Beginning of meeting: Review norms, set individual goals privately
 - End of meeting: Share appreciations of norms in action, reflect privately on goals
- **Inquiries/Concerns that come to BOE members**
 - Follow Communication Protocol:
 - Connect first with the Superintendent to discuss need, inquiry and/or concern.
 - If superintendent is not available, contact the Secretary to the Board of Education (currently Tiffany Aspromonte).
 - Connect with the President of the Board to discuss need, inquiry and/or concern.

- [Social Media Guidelines](#)

Here are some great tips to maintain a thoughtful approach when using social media:

- | | |
|--|---|
|  Separate your personal and public social media accounts |  Promote your social media presence through email auto-signature |
|  Focus your public social media account on district events and updates, not personal views or updates |  On your public social media account, never delete comments or block individuals |
|  Consider disabling comments entirely on your public social media account |  Avoid discussing topics related to board service on your personal social media account |
|  Be cautious about sharing others' information on social media |  Refrain from engaging in arguments with community members or critics |
|  Direct complaints to appropriate school staff or administrators |  Avoid connecting with other board members on social media due to the Colorado Open Meetings Law |
|  Decide on the frequency of your posts to provide fresh content |  Avoid sharing uncertain or inaccurate information |
|  Follow and friend only useful resources | |

BOE Schedule & Planning Calendar

- [BOE Work Session and Board Meeting Calendar](#)
- [Planning Calendar](#)

Articulated Agenda Planning Process

- **Providing Input on Agenda:** There are many avenues for board members to provide input on the work session and board agenda including:
 - Communication with the board president and/or the superintendent including email, phone calls, and 1-1 meetings
 - Input during work session and board meetings
- **Collaborative Agenda Planning Meeting:** The goal of this meeting is to collaboratively discuss and set the general agenda for upcoming work sessions and board meetings. Following each board meeting, a collaborative agenda planning session will be held with the superintendent, board president and additional board member. This additional board member will rotate each month which will ensure diverse board perspectives are included in the agenda planning session. The detailed, final agenda will be finished by the board president and superintendent prior to the meeting dates.
- **Agenda Release Schedule*:**

*Best efforts will be made to post agendas with time for board members and the public to review. All agendas are required to be posted 24 hours before a public meeting.

- **Work Sessions:**
 - Dates and topics will be posted on the district website one week prior to the work session.
 - The agenda will be posted and shared with links on the Wednesday before the Monday work session.
- **Board Meetings:**
 - Dates and topics will be posted on the district website one week prior to the work session.
 - The agenda will be posted and shared with links one week prior to the Board meeting.

Engagement and Communication Opportunities

- **1-1 Meetings with the Superintendent:** Board members should have a recurring monthly meeting with the Superintendent*. The 1-1 meeting format is an effective way to build a strong working relationship between board members and the superintendent by sharing community perspectives and discussing successes, challenges, concerns and solutions. Reschedule when necessary. *Note: The President of the board should communicate with the Superintendent in their official capacity as needed, and/or at a minimum of once per week.
- **District Communications:** Board members will receive all district external communications including Mancos Matters, Community Connections, Kids' Corner, Little Jay Express, Blue Jay Express and the monthly staff newsletter, Campus Connections. All other communications directed to the board will go through the superintendent's office prior to release to the board.
 - Mancos Matters Monthly "Board Note" schedule: 1st Wednesday of the month (10 days after Board Meeting)
- **School Visits in Official Capacity as Board Member***
 - At all times, board members will check into an office when on campus and inform the office staff of the purpose of their visit.
 - If the board member would like to visit a school in their official capacity as a board member, the board member must set up a time with the superintendent in advance. The board member and the superintendent should define and agree on the purpose of the visit. Principals and teachers will be informed of visits ahead of time. The superintendent, principal, or staff member will accompany the board member throughout a school visit.
 - Board members will receive invitations or a calendar links to all grade-wide and school-wide events to their school based e-mail/calendar. When possible and appropriate, they may be sent invitations to class-based events.
 - If a board member is on campus as a parent, volunteer, or coach, or spectator they should follow regular protocols for checking into the office and/or the event coordinators upon entry.

*(Resource: CASB New Member Handbook 2.9, pg 9)

- **District Accountability Committee (DAC):** The District Accountability/Accreditation Committee's primary purpose is to monitor and support the academic achievement of District students. The committee offers patrons, students, and staff the opportunity to become involved with the

improvement of the educational system. The committee serves as an advisory panel to the Board of Education and reports to the Board as directed in state law. The DAC is a formal way for School Board members and the superintendent to work together with stakeholders in service of students and the district.

- *Other opportunities to be articulated:*
 - *coffee chats*
 - *quarterly informal work sessions*
 - *forums*
 - *Committees*

ADDITIONS NEEDED: