



NOTICE IS HEREBY GIVEN THAT A REGULAR MEETING OF THE BOARD OF EDUCATION OF THE IDABEL PUBLIC SCHOOLS DISTRICT I-005, MCCURTAIN COUNTY, OKLAHOMA WILL BE HELD IN THE CONFERENCE ROOM AT THE IDABEL PUBLIC LIBRARY, 103 EAST MAIN, IDABEL, OK 74745 ON June 10, 2019 AT 5:30 PM WITH THE FOLLOWING ITEMS TO BE CONSIDERED:

**AGENDA
REGULAR MEETING OF THE BOARD OF EDUCATION
June 10, 2019**

- 1. OPENING: CALL TO ORDER AND ROLL CALL OF MEMBERS.**
 - A. PRESIDENT: BRENT BOLEN**
 - B. VICE PRESIDENT: DONNIE BUTLER**
 - C. CLERK: CLAIRE LEHR-DOWNING**
 - D. MEMBER: DARRELL COURTNEY**
 - E. MEMBER: JERRY ROBINSON**
- 2. BOARD TO TAKE ACTION ON THE EMPLOYMENT OF STEPHEN H. MCDONALD & ASSOCIATES, INC. AS FINANCIAL CONSULTANT TO THE SCHOOL DISTRICT.**
- 3. BOARD TO CONSIDER AND TAKE ACTION ON A RESOLUTION AUTHORIZING THE CALLING AND HOLDING OF A SPECIAL ELECTION TO BE HELD IN THIS SCHOOL DISTRICT TO AUTHORIZE THE ISSUANCE OF GENERAL OBLIGATION BONDS.**
- 4. CONSENT AGENDA: VOTE TO APPROVE OR DISAPPROVE THE FOLLOWING ITEMS:**

A. MINUTES OF MAY 13, 2019 REGULAR MEETING.

B. TREASURER'S REPORT

C. ENCUMBRANCES

- 1. 2018-2019 GENERAL FUND 11 - #907-920
2018-2019 CHILD NUTRITION 22 #68
2019-2020 GENERAL FUND 11 #1-9
19-20 CHILD NUTRITION FUND 22 #1-3
19-20 SINKING FUND 41 #1-2**

D. ACTIVITY FUND BALANCES

E. ACTIVITY FUND NEW ACCOUNT

F. RESIGNATIONS.

- 1. RESIGNATIONS:
COURTNEY FIPPS NEWMAN- SCIENCE TEACHER- MIDDLE SCHOOL
RACHEL BRYANT- PARAPROFESSIONAL- CENTRAL
ANNETTE AZLIN- MATH TEACHER- MIDDLE SCHOOL**

5. PRINCIPALS'/DIRECTORS' REPORT

A. SUPERINTENDENT'S REPORT

6. DISCUSSION AND POSSIBLE ACTION TO EMPLOY SOONER CONSTRUCTION MANAGEMENT SERVICES, INC 190 SOUTH THREE MILE ROAD, FT. GIBSON OK. TO COMPLETE CONSTRUCTION OF THE PROPOSED BOND PROJECTS.

7. DISCUSSION AND POSSIBLE ACTION TO EMPLOYE BOYNTON WILLIAMS & ASSOCIATES, 900 36TH AVENUE NW STE. #100 NORMAN OKLAHOMA 73072 TO DESIGN AND ASSIST IN CONSTRUCTION OF THE PROPOSED BOND PROJECTS.

8. VOTE TO APPROVE OR DISAPPROVE THE SURPLUS OF ITEMS FROM CENTRAL ELEMENTARY SCHOOL. ADDENDUM A (SEE ATTACHED)

- 9. DISCUSSION AND REVIEW OF IDABEL PUBLIC SCHOOLS STUDENT ACCIDENT INSURANCE OPTIONS FOR THE 2019-2020 SCHOOL YEAR.**

- 10. DISCUSSION AND VOTE TO APPROVE OR DISAPPROVE TO CONTINUE THE CURRENT PROPERTY AND CASUALTY INSURANCE WITH OKLAHOMA SCHOOLS INSURANCE GROUP (OSIG) FOR 2019-2020 OR THE NEW PROPOSAL INCREASING COVERAGE.**

- 11. VOTE TO APPROVE OR DISAPPROVE TO CONTINUE MEMBERSHIP WITH OKLAHOMA STATE SCHOOL BOARDS ASSOCIATION FOR 2019-2020.**

- 12. VOTE TO APPROVE OR DISAPPROVE TO CONTINUE UNEMPLOYMENT SERVICES WITH OPSUCA FOR 2019-2020**

- 13. VOTE TO APPROVE OR DISAPPROVE TO CONTINUE WORKERS COMPENSATION INSURANCE WITH OSAG (OKLAHOMA SCHOOL ASSURANCE GROUP) FOR 2019-2020**

- 14. VOTE TO APPROVE OR DISAPPROVE THE 2019-2020 COOPERATIVE AGREEMENT/TITLE III CONSORTIUM WITH MCALESTER PUBLIC SCHOOLS.**

- 15. VOTE TO APPROVE OR DISAPPROVE FORM 307 TO ADD APPROPRIATIONS FOR STATE AND FEDERAL FUNDS**

- 16. VOTE TO APPROVE OR DISAPPROVE THE SCHOOL DISTRICT TREASURER TO CONTINUE TO DEPOSIT ALL INTEREST EARNINGS IN THE IDABEL NATIONAL BANK ACCOUNT INTO THE GENERAL FUND FOR 2018-2019.**

- 17. VOTE TO APPROVE OR NOT APPROVE THE FOLLOWING:**
 - A. SUPERINTENDENT DOUG BROWN AS PURCHASING AGENT FOR IDABEL INDEPENDENT SCHOOL DISTRICT, AUTHORIZED REPRESENTATIVE FOR ALL FEDERAL PROGRAMS INCLUDING E-RATE AND CHILD NUTRITION, AND DESIGNATED CUSTODIAN FOR THE GENERAL FUND, BUILDING FUND, CHILD NUTRITION FUND, CO-OP FUND, BOND FUND, ACTIVITY FUND, AND ALL FEDERAL PROGRAMS INCLUDING E-RATE, ALL STATE PROGRAMS, AND ALL OTHER SCHOOL PROGRAMS AND ACTIVITIES NOT LISTED FOR THE 2019-2020 SCHOOL YEAR.**
 - B. CAROLYN JANZ AS AN AUTHORIZED REPRESENTATIVE OF IDABEL PUBLIC SCHOOLS CHILD NUTRITION PROGRAM**
 - C. DEBRA MCGEE, PAYROLL CLERK FOR THE IDABEL PUBLIC SCHOOLS, AS THE**

SCHOOL'S TREASURER AND AUTHORIZED INVESTING OFFICER OF THE IDABEL PUBLIC SCHOOLS GENERAL, BUILDING, SINKING AND CHILD NUTRITION, CO-OP, AND BOND FUNDS AS DIRECTED BY THE SUPERINTENDENT OF SCHOOLS.

D. DOUG BROWN, DAWN BOURNE AND DEBRA MCGEE AS CUSTODIANS OF THE SCHOOL'S ACTIVITY FUND AND CHILD NUTRITION FUND ACCOUNTS; DOUG BROWN AS PURCHASING AGENT AND INVESTING OFFICER OF IDABEL PUBLIC SCHOOL ACCOUNTS

E. DAWN BOURNE, AS THE MINUTES CLERK FOR THE IDABEL PUBLIC SCHOOLS

F. KRISTIN GREEN, AS THE ENCUMBRANCE CLERK FOR THE IDABEL PUBLIC SCHOOLS.

G. ALL OF THE ACTIVITY FUND EXPENDITURES FOR 2019-2020 AS PRESENTED IN ADDENDUM "A" (SEE ATTACHED.)

**18. VOTE TO GO INTO PROPOSED EXECUTIVE SESSION TO DISCUSS THE FOLLOWING ITEMS:
AUTHORIZED BY: 25 O.S. SECTION 307 (B)(1)(2).**

A. EMPLOYMENT OF:

- A. KELSEY ANDERSON- TEACHER- CENTRAL SCHOOL**
- B. CHADLEY DAVIS- MATH TEACHER- MIDDLE SCHOOL**
- C. DONAL WEATHERFORD- MATH TEACHER- MIDDLE SCHOOL**
- D. JOHN HARJO- DIRECTOR OF ALTERNATE EDUCATION**
- E. DISCUSSION AND POSSIBLE ACTION ON SUPERINTENDENTS CONTRACT**

19. ACKNOWLEDGE THAT THE BOARD HAS RETURNED TO OPEN SESSION.

20. EXECUTIVE SESSION MINUTES COMPLIANCE: STATEMENT BY BOARD PRESIDENT: THE IDABEL BOARD OF EDUCATION MET IN EXECUTIVE SESSION FOR THE PURPOSE OF EMPLOYMENT.

- A. KELSEY ANDERSON- TEACHER- CENTRAL SCHOOL**
- B. CHADLEY DAVIS- MATH TEACHER- MIDDLE SCHOOL**
- C. DONAL WEATHERFORD- MATH TEACHER- MIDDLE SCHOOL**
- D. JOHN HARJO- DIRECTOR OF ALTERNATE EDUCATION**
- E. DISCUSSION AND POSSIBLE ACTION ON SUPERINTENDENTS CONTRACT**

21. VOTE TO APPROVE OR DISAPPROVE THE HIRING OF:

- A. KELSEY ANDERSON- TEACHER- CENTRAL SCHOOL**
- B. CHADLEY DAVIS- MATH TEACHER- MIDDLE SCHOOL**
- C. DONAL WEATHERFORD- MATH TEACHER- MIDDLE SCHOOL**
- D. JOHN HARJO- DIRECTOR OF ALTERNATE EDUCATION**

22. VOTE TO APPROVE OR DISAPPROVE CHANGES TO SUPERINTENDENT CONTRACT

23. CONSIDER AND POSSIBLE ACTION ON ANY MATTER NOT KNOWN ABOUT OR WHICH COULD NOT HAVE BEEN REASONABLY FORSEEN PRIOR TO THE TIME OF PREPARATION OF THE AGENDA FOR THE REGULARLY SCHEDULED MEETING.

24. VOTE TO ADJOURN

NAME OF PERSON POSTING THIS NOTICE:

_____ **DAWN BOURNE, MINUTES CLERK**

THIS AGENDA WAS POSTED ON THIS _____ DAY OF _____, _____ at 11:00 A.M. IN THE FOYER OF THE ADMINISTRATION BUILDING AND THE FRONT WINDOW OF THE IDABEL PUBLIC LIBRARY, 103 EAST MAIN STREET, IDABEL OKLAHOMA

“Continuing Notice of Nondiscrimination” Idabel Public Schools does not discriminate on the basis of race, color, national origin, sex, disability, or age in its programs or activities and provides equal access to the Boy Scouts and other designated youth groups. The following person has been designated to handle inquiries regarding the non-discrimination policies:

Doug Brown, Superintendent, Idabel Public Schools, 200 Northeast Avenue C, Idabel, Oklahoma, 74745, telephone (580)286-7639

RESOLUTION AUTHORIZING ELECTION ("FIRST RESOLUTION")

Pursuant to notice given under The Open Meeting Act, the Board of Education of Independent School District Number 5 of McCurtain County, State of Oklahoma, met in Regular Session at the Conference Room, Idabel Public Library, Idabel Public Schools, 103 East Main Street, Idabel, Oklahoma, in said School District on the 10th day of June, 2019, at 5:30 o'clock p.m.

PRESENT:

ABSENT:

Notice of the schedule of regular meetings of the School District for the calendar year 2019 was given in writing, to the County Clerk of McCurtain County, Oklahoma at 10:50 o'clock a.m. on the 14th day of November, 2018, and public notice of this meeting, setting forth the date, time, place and agenda was posted in the foyer of the Administration Building and the front window of the Idabel Public Library, in prominent view and open to the public twenty-four (24) hours each day, seven (7) days each week at _____ o'clock ____m. on the _____ day of _____, 20____, being twenty-four (24) hours or more prior to this meeting, excluding Saturdays, Sundays, and State designated legal holidays, all in compliance with the Oklahoma Open Meeting Act (as attached hereto).

(OTHER PROCEEDINGS)

_____ introduced a Resolution which was read in full by the Clerk and upon motion by _____, seconded by _____, was adopted by the following vote:

AYE:

NAY:

and said Resolution was thereupon signed by the President, attested by the Clerk, sealed with the seal of said School District, and is as follows:

RESOLUTION

A resolution authorizing the calling and holding of an election of Independent School District Number 5 of McCurtain County, Oklahoma for the purpose of submitting to the registered, qualified electors thereof the question of the issuance of the bonds of said School District in the sum of Nine Million Five Hundred Twenty Thousand Dollars (\$9,520,000).

To be issued in one or more series to provide funds for the purpose of constructing, equipping, repairing and remodeling school buildings, acquiring school furniture, fixtures and equipment and acquiring and improving school sites, and levying and collecting an annual tax in such district for the payment of the interest and principal of said bonds.

WHEREAS, it is deemed advisable by the Board of Education of Independent School District Number 5 of McCurtain County, Oklahoma, to construct, equip, repair and remodel school buildings, acquire school furniture, fixtures and equipment and acquire and improve school sites, and

WHEREAS, there are no funds in the treasury for such purpose and power is granted said Board by Article X, Section 26 of the Oklahoma Constitution and Title 70, Article XV of the Oklahoma Statutes, 2011, and laws supplementary and amendatory thereto, to issue bonds to provide funds for such purpose provided the same be authorized by the registered qualified electors thereof, voting at an election held for that purpose.

Now, therefore, be it resolved by the Board of Education of Independent School District Number 5 of McCurtain County, Oklahoma:

SECTION 1.

That a special election is hereby called in said School District to be held on the 10th day of September, 2019, for the purpose of submitting to the registered qualified electors of such School District the following proposition:

PROPOSITION

Shall Independent School District Number 5 of McCurtain County, Oklahoma, incur an indebtedness by issuing its bonds in the sum of Nine Million Five Hundred Twenty Thousand Dollars (\$9,520,000) to be issued in one or more series to provide funds for the purpose of constructing, equipping, repairing and remodeling school buildings, acquiring school furniture, fixtures and equipment and acquiring and improving school sites, and levy and collect an annual tax, in addition to all other taxes, upon all the taxable property in such District sufficient to pay the interest on such bonds as it falls due and also to constitute a sinking fund for the payment of the principal thereof when due, said bonds to bear interest not to exceed the rate of ten (10%) percentum per annum, payable semi-annually and to become due serially within ten (10) years from their date?

SECTION 2.

That such call for said election shall be by proclamation and notice signed by the President or Vice-President and attested by the Clerk or Deputy Clerk setting forth the proposition to be voted upon, the number and location of the polling places, the hours of opening and closing of the polls, the names of the officers who shall conduct said election and the substance of Section 4 hereof, that the ballots shall set forth the proposition to vote upon substantially as set out in Section 1 hereof, and that the returns of said election shall be canvassed and certified to by the County Election Board.

SECTION 3.

That the number and location of the polling places and precinct officers for said election shall be as prescribed by the County Election Board.

SECTION 4.

That the specific projects for which at least eighty-five percent (85%) of the proceeds of the aforesaid Bonds shall be expended and the dollar amounts for each project shall be as follows:

to construct, furnish, equip and/or acquire a new band room/safe room at the high school	\$2,605,000.00
to construct, furnish, equip and/or acquire improvements to the Vo-Ag building at the high school	\$555,000.00
to construct, furnish, equip and/or acquire a new football field to include, but not be limited to: track, bleachers, press box, concession, restrooms, scoreboard and lighting	\$6,360,000.00
TOTAL:	\$9,520,000.00

SECTION 5.

That a copy of this Resolution shall be personally delivered to the office of the County Election Board of McCurtain County, State of Oklahoma, at least sixty (60) days prior to the date of said election.

ADOPTED AND APPROVED this 10th day of June, 2019.

President, Board of Education

ATTEST:

Clerk, Board of Education

(SEAL)

INFORMATIVE NOTE TO THE COUNTY ELECTION BOARD: The proposition contained in this resolution requires a three-fifths (60%) majority for its passage and approval.



**MINUTES OF
Idabel Public Schools
REGULAR MEETING OF THE BOARD OF EDUCATION
May 13, 2019**

THE Idabel Public Schools, IDABEL INDEPENDENT SCHOOL DISTRICT NUMBER FIVE, IDABEL, OKLAHOMA MET May 13, 2019 AT 5:30 PM WITH THE FOLLOWING MEMBERS PRESENT:

Attendance Taken at 5:32 PM.

Brent Bolen: Present
Donny Butler: Absent
Darrell Courtney: Present
Claire Downing: Present
Jerry Robinson: Absent

1. OPENING: CALL TO ORDER AND ROLL CALL OF MEMBERS.

- A. PRESIDENT: BRENT BOLEN
- B. VICE PRESIDENT: DONNIE BUTLER
- C. CLERK: CLAIRE LEHR-DOWNING
- D. MEMBER: DARRELL COURTNEY
- E. MEMBER: JERRY ROBINSON

2. IHS RECOGNITION:
CLAYTON SAIZ-POWERLIFTING
JEFF MCCARTER- FFA
TERESA AND DANNY BELL- BAND

3. CONSENT AGENDA: VOTE TO APPROVE OR DISAPPROVE THE FOLLOWING ITEMS:

Motion to approve the consent agenda Passed with a motion by Claire Downing and a second by Darrell Courtney.

Brent Bolen: Yea

Donny Butler: Absent
Darrell Courtney: Yea
Claire Downing: Yea
Jerry Robinson: Absent
Yea: 3, Nay: 0, Absent: 2

A. MINUTES OF APRIL 8 2019 REGULAR MEETING.

B. TREASURER'S REPORT

C. ENCUMBRANCES

1. GENERAL FUND 11 - PO #836-906
CHILD NUTRITION 22- PO # 60-67
SINKING FUND 41 - PO # 5-6
5 MILL BUILDING FUND 21- PO # 5-6

D. ACTIVITY FUND BALANCES AND ACTIVITY FUND APPROVALS FOR THE 2019-2020 SCHOOL YEAR

E. RESIGNATIONS AND RETIREMENTS.

1. RESIGNATIONS:

CLAYTON SAIZ- TEACHER/COACH- HIGH SCHOOL
BRITTNEY ALLEN- TEACHER- MIDDLE SCHOOL
VIRGINIA CAROL WHITE- BUS DRIVING-EXTRA DUTY
CASEY ZACHRY- TEACHER/COACH- MIDDLE/HIGH SCHOOL

2. RETIREMENTS:

SUSIE DAVIES- TEACHER- CENTRAL PATTI
PUGH- TEACHER- PRIMARY SOUTH

4. PRINCIPALS'/DIRECTORS' REPORT

5. SUPERINTENDENT'S REPORT

6. VOTE TO APPROVE OR DISAPPROVE FORM 307 TO ADD APPROPRIATIONS FOR STATE AND FEDERAL FUNDS.

MOTION TO APPROVE FORM 307 TO ADD APPROPRIATIONS FOR STATE AND FEDERAL FUNDS. Passed with a motion by Brent Bolen and a second by Claire Downing.

Brent Bolen: Yea
Donny Butler: Absent
Darrell Courtney: Yea
Claire Downing: Yea
Jerry Robinson: Absent
Yea: 3, Nay: 0, Absent: 2

7. DISCUSSION AND VOTE TO APPROVE OR DISAPPROVE 2019-2020 CONTRACTS FOR THE FOLLOWING:

- A. APRIL HURST - PHYSICAL THERAPIST
- B. SENDI RANEY - OCCUPATIONAL THERAPIST
- C. MCKENZI BALWIN - SPEECHPATHOLOGIST

D. LANA MCELROY - SPEECH PATHOLOGIST

MOTION TO APPROVE 2019-2020 CONTRACTS FOR THE FOLLOWING:

- A. APRIL HURST - PHYSICAL THERAPIST
- B. SENDI RANEY - OCCUPATIONAL THERAPIST
- C. MCKENZI BALWIN - SPEECH PATHOLOGIST
- D. LANA MCELROY - SPEECH PATHOLOGIST

Passed with a motion by Darrell Courtney and a second by Claire Downing.

Brent Bolen: Yea

Donny Butler: Absent

Darrell Courtney: Yea

Claire Downing: Yea

Jerry Robinson: Absent

Yea: 3, Nay: 0, Absent: 2

8. DISCUSSION AND VOTE TO APPROVE OR DISAPPROVE THE HIRING FOR SUMMER SCHOOL 2019 AS LISTED ON ADDENDUM A-B

MOTION TO APPROVE THE HIRING FOR SUMMER SCHOOL 2019 AS LISTED ON ADDENDUM A-B Passed with a motion by Claire Downing and a second by Darrell Courtney.

Brent Bolen: Yea

Donny Butler: Absent

Darrell Courtney: Yea

Claire Downing: Yea

Jerry Robinson: Absent

Yea: 3, Nay: 0, Absent: 2

9. DISCUSSION AND VOTE TO APPROVE OR DISAPPROVE AN ANNUAL CONTRACT BETWEEN IDABEL PUBLIC SCHOOLS AND LITTLE DIXIE COMMUNITY ACTION AGENCY, INC., HEAD START SPECIAL SERVICES FOR THE 2019-2020 SCHOOL YEAR.

MOTION TO APPROVE AN ANNUAL CONTRACT BETWEEN IDABEL PUBLIC SCHOOLS AND LITTLE DIXIE COMMUNITY ACTION AGENCY, INC., HEAD START SPECIAL SERVICES FOR THE 2019-2020 SCHOOL YEAR. Passed with a motion by Darrell Courtney and a second by Claire Downing.

Brent Bolen: Yea

Donny Butler: Absent

Darrell Courtney: Yea

Claire Downing: Yea

Jerry Robinson: Absent

Yea: 3, Nay: 0, Absent: 2

10. VOTE TO APPROVE OR DISAPPROVE A CONTRACT WITH LITTLE DIXIE COMMUNITY ACTION AGENCY, INC., HEAD START FOR THE 2019-2020 SCHOOL YEAR. THIS INCLUDES A MEMORANDUM OF UNDERSTANDING.

MOTION TO APPROVE A CONTRACT WITH LITTLE DIXIE COMMUNITY ACTION AGENCY, INC., HEAD START FOR THE 2019-2020 SCHOOL YEAR. THIS

INCLUDES A MEMORANDUM OF UNDERSTANDING. Passed with a motion by Darrell Courtney and a second by Claire Downing.

Brent Bolen: Yea
Donny Butler: Absent
Darrell Courtney: Yea
Claire Downing: Yea
Jerry Robinson: Absent
Yea: 3, Nay: 0, Absent: 2

11. DISCUSSION AND MOTION AND VOTE TO APPROVE OR DISAPPROVE A CONTRACT FOR 2019-2020 WITH APTEGY FOR WEB-SITE HOSTING.

MOTION TO APPROVE A CONTRACT FOR 2019-2020 WITH APTEGY FOR WEB-SITE HOSTING. Passed with a motion by Darrell Courtney and a second by Claire Downing.

Brent Bolen: Yea
Donny Butler: Absent
Darrell Courtney: Yea
Claire Downing: Yea
Jerry Robinson: Absent
Yea: 3, Nay: 0, Absent: 2

12. VOTE TO APPROVE OR DISAPPROVE TRANSPORTATION CONTRACT BETWEEN IDABEL PUBLIC SCHOOLS AND KIAMICHI TECHNOLOGY CENTER FOR 2019-2020 SCHOOL YEAR.

MOTION TO APPROVE TRANSPORTATION CONTRACT BETWEEN IDABEL PUBLIC SCHOOLS AND KIAMICHI TECHNOLOGY CENTER FOR 2019-2020 SCHOOL YEAR. Passed with a motion by Darrell Courtney and a second by Claire Downing.

Brent Bolen: Yea
Donny Butle Absent
Darrell Courtney: Yea
Claire Downing: Yea
Jerry Robinson: Absent
Yea: 3, Nay: 0, Absent: 2

13. VOTE TO APPROVE OR DISAPPROVE A MATH/SCIENCE COURSE INSTRUCTION AGREEMENT WITH KIAMICHI TECHNOLOGY CENTER. THIS IS FOR THE 2019-2020 SCHOOL YEAR.

PURPOSE: TO ALLOW JUNIOR AND SENIOR HIGH SCHOOL STUDENTS ENROLLED AT KIAMICHI TECHNOLOGY CENTERS TO TAKE ALGEBRA II, GEOMETRY, MATH OF FINANCE, TRIGONOMETRY/PRE-CALCULUS, AP CALCULUS, BIOLOGY II, ANATOMY AND PHYSIOLOGY, AND AP CHEMISTRY TAUGHT BY CERTIFIED MATH/SCIENCE INSTRUCTORS AND BE TRANSCRIPTED FOR HIGH SCHOOL GRADUATION OR TO MEET THE CORE CURRICULUM REQUIREMENTS FOR ADMISSION TO OKLAHOMA COLLEGES AND UNIVERSITIES

MOTION TO APPROVE A MATH/SCIENCE COURSE INSTRUCTION AGREEMENT WITH KIAMICHI TECHNOLOGY CENTER. THIS IS FOR THE 2019-2020 SCHOOL YEAR.

PURPOSE: TO ALLOW JUNIOR AND SENIOR HIGH SCHOOL STUDENTS ENROLLED AT KIAMICHI TECHNOLOGY CENTERS TO TAKE ALGEBRA II,

GEOMETRY, MATH OF FINANCE, TRIGONOMETRY/PRE-CALCULUS, AP CALCULUS, BIOLOGY II, ANATOMY AND PHYSIOLOGY, AND AP CHEMISTRY TAUGHT BY CERTIFIED MATH/SCIENCE INSTRUCTORS AND BE TRANSCRIPTED FOR HIGH SCHOOL GRADUATION OR TO MEET THE CORE CURRICULUM REQUIREMENTS FOR ADMISSION TO OKLAHOMA COLLEGES AND UNIVERSITIES Passed with a motion by Darrell Courtney and a second by Claire Downing.

Brent Bolen: Yea
 Donny Butler: Absent
 Darrell Courtney: Yea
 Claire Downing: Yea
 Jerry Robinson: Absent
 Yea: 3, Nay: 0, Absent: 2

14. DISCUSSION AND VOTE TO APPROVE OR DISAPPROVE THE SUMMER EMPLOYMENT OF COACHES FOR SUMMER ATHLETICS PROGRAMS AND SUMMER MAINTENANCE WORKERS FOR MAY 14TH- AUG 6 2019 AT \$10.00 HOUR.

1. A. BB GRIFFIN - BOYS BASKETBALL	\$1600.00
2. B. KATEIDRIA MOSLEY - GIRLS BASKETBALL	\$1600.00
3. C. CADE CLAY - BASEBALL	\$1600.00
4. D. TIFFANY LINDLEY - SOFTBALL	\$1600.00
5. E. SCOTT PRATT - FOOTBALL	\$1600.00
6. F. SHUNTEZ SMITH- MAINTENANCE	\$10.00 HR
7. G. JEREMY BEENE- MAINTENANCE	\$10.00 HR

DISCUSSION AND VOTE TO APPROVE OR DISAPPROVE THE SUMMER EMPLOYMENT OF COACHES FOR SUMMER ATHLETICS PROGRAMS AND SUMMER MAINTENANCE WORKERS FOR MAY 14TH- AUG 6 2019 AT \$10.00 HOUR.

A. BB GRIFFIN - BOYS BASKETBALL	\$1600.00
B. KATEIDRIA MOSLEY - GIRLS BASKETBALL	\$1600.00
C. CADE CLAY - BASEBALL	\$1600.00
D. TIFFANY LINDLEY - SOFTBALL	\$1600.00
E. SCOTT PRATT - FOOTBALL	\$1600.00
F. SHUNTEZ SMITH- MAINTENANCE	\$10.00 HR
G. JEREMY BEENE- MAINTENANCE	\$10.00 HR

Passed with a

Motion by Darrell Courtney and a second by Claire Downing.

Brent Bolen: Yea
 Donny Butler: Absent
 Darrell Courtney: Yea
 Claire Downing: Yea
 Jerry Robinson: Absent
 Yea: 3, Nay: 0, Absent: 2

15. DISCUSSION AND POSSIBLE ACTION TO ISSUE A STATEMENT OF SUPPORT FOR A COST OF LIVING ADJUSTMENT FOR RETIRED EDUCATORS.

MOTION TO ISSUE A STATEMENT OF SUPPORT FOR A COST OF LIVING ADJUSTMENT FOR RETIRED EDUCATORS. Passed with a motion by Darrell Courtney and a second by Claire Downing.

Brent Bolen: Yea
Donny Butler: Absent
Darrell Courtney: Yea
Claire Downing: Yea
Jerry Robinson: Absent
Yea: 3, Nay: 0, Absent: 2

16. VOTE TO APPROVE OR DISAPPROVE RENEWAL OF CONTRACT WITH MUNICIPAL ACCOUNTING SYSTEMS, INC. (MAS) FOR 2019-2020 SCHOOL YEAR. MOTION TO APPROVE RENEWAL OF CONTRACT WITH MUNICIPAL ACCOUNTING SYSTEMS, INC. (MAS) FOR 2019-2020 SCHOOL YEAR. Passed with a motion by Darrell Courtney and a second by Claire Downing.

Brent Bolen: Yea
Donny Butler: Absent
Darrell Courtney: Yea
Claire Downing: Yea
Jerry Robinson: Absent
Yea: 3, Nay: 0, Absent: 2

17. VOTE TO APPROVE OR DISAPPROVE TO HIRE JEFF BELL TO TEACH DRIVERS EDUCATION DURING SUMMER SCHOOL. IT WILL BEGIN JUNE 3, 2019. \$17.50/HR FOR 30 HOURS OF CLASSROOM INSTRUCTION- \$525.00 AND \$15.00/HR FOR DRIVE TIME- 6 HOURS PER STUDENT- 15 STUDENT MAX-\$1350.00

MOTION TO APPROVE TO HIRE JEFF BELL TO TEACH DRIVERS EDUCATION DURING SUMMER SCHOOL. IT WILL BEGIN JUNE 3, 2019. \$17.50/HR FOR 30 HOURS OF CLASSROOM INSTRUCTION- \$525.00 AND \$15.00/HR FOR DRIVE TIME- 6 HOURS PER STUDENT- 15 STUDENT MAX- \$1350.00 Passed with a motion by Darrell Courtney and a second by Claire Downing.

Brent Bolen: Yea
Donny Butler: Absent
Darrell Courtney: Yea
Claire Downing: Yea
Jerry Robinson: Absent
Yea: 3, Nay: 0, Absent: 2

18. VOTE TO GO INTO PROPOSED EXECUTIVE SESSION TO DISCUSS THE FOLLOWING ITEMS: AUTHORIZED BY: 25 O.S. SECTION 307 (B)(1). MOTION TO GO INTO PROPOSED EXECUTIVE SESSION TO DISCUSS THE FOLLOWING ITEMS: AUTHORIZED BY: 25 O.S. SECTION 307 (B)(1) Passed with a motion by Darrell Courtney and a second by Claire Downing.

Brent Bolen: Yea
Donny Butler: Absent
Darrell Courtney: Yea

Claire Downing: Yea
Jerry Robinson: Absent
Yea: 3, Nay: 0, Absent: 2

A. A. TO DISCUSS RE-EMPLOYMENT OF ALL CAREER TEACHERS AS RECOMMENDED BY THE BUILDING

B. TO DISCUSS THE EVALUATIONS OF PROBATIONARY TEACHERS FOR THE 2019-2020 SCHOOL YEAR.

C. TO DISCUSS RE-EMPLOYMENT OF ALL PROBATIONARY TEACHERS AS RECOMMENDED BY THE BUILDING

PRINCIPALS FOR THE 2019-2020 SCHOOL YEAR (ADDENDUM A) DISCUSS

HIRING OF:

D. JENNA PRATT- TEACHER- MIDDLE SCHOOL

E. CADE CLAY- HEAD BASEBALL COACH/TEACHER- HIGH SCHOOL

F. JEREMY BEENE- SCIENCE TEACHER- HIGH SCHOOL

G. TREVOR MATLOCK- HISTORY TEACHER- HIGH SCHOOL

H. TIFFANY LINDLY- HEALTH/SAFETY TEACHER- HIGH SCHOOL

I. STERRETTE COFFMAN- ENGLISH/RESOURCE SPEC ED TEACHER- MIDDLE SCHOOL

J. SHERRY VEVERKA- PARAPROFESSIONAL- MIDDLE SCHOOL

K. JADE JOHNSON- PARAPROFESSIONAL- CENTRAL

L. DISCUSSION AND POSSIBLE VOTE REGARDING EMPLOYMENT OF JENNIFER WILLIAMS, SUPPORT EMPLOYEE

19. ACKNOWLEDGE THAT THE BOARD HAS RETURNED TO OPEN SESSION.

20. EXECUTIVE SESSION MINUTES COMPLIANCE: STATEMENT BY BOARD PRESIDENT: THE IDABEL BOARD OF EDUCATION MET IN EXECUTIVE SESSION FOR THE PURPOSE OF

A. TO DISCUSS RE-EMPLOYMENT OF ALL CAREER TEACHERS AS RECOMMENDED BY THE BUILDING

B. TO DISCUSS THE EVALUATIONS OF PROBATIONARY TEACHERS FOR THE 2019-2020 SCHOOL YEAR.

C. TO DISCUSS RE-EMPLOYMENT OF ALL PROBATIONARY TEACHERS AS RECOMMENDED BY THE BUILDING

PRINCIPALS FOR THE 2019-2020 SCHOOL YEAR (ADDENDUM A)

DISCUSS HIRING OF:

D. JENNA PRATT- TEACHER- MIDDLE SCHOOL

E. CADE CLAY- HEAD BASEBALL COACH/TEACHER- HIGH SCHOOL

F. JEREMY BEENE- SCIENCE TEACHER- HIGH SCHOOL

G. TREVOR MATLOCK- HISTORY TEACHER- HIGH SCHOOL

H. TIFFANY LINDLY- HEALTH/SAFETY TEACHER- HIGH SCHOOL

I. STERRETTE COFFMAN- ENGLISH/RESOURCE SPEC ED TEACHER- MIDDLE SCHOOL

J. SHERRY VEVERKA- PARAPROFESSIONAL- MIDDLE SCHOOL

K. JADE JOHNSON- PARAPROFESSIONAL- CENTRAL

L. DISCUSSION AND POSSIBLE VOTE REGARDING EMPLOYMENT OF JENNIFER WILLIAMS, SUPPORT EMPLOYEE

21. VOTE TO APPROVE OR DISAPPROVE THE HIRING OF:

A. RE-EMPLOYMENT OF ALL CAREER TEACHERS AS RECOMMENDED BY THE BUILDING

C. RE-EMPLOYMENT OF ALL PROBATIONARY TEACHERS AS RECOMMENDED BY THE BUILDING PRINCIPALS FOR THE 2019-2020 SCHOOL YEAR (ADDENDUM A)

D. JENNA PRATT- TEACHER- MIDDLE SCHOOL

E. CADE CLAY- HEAD BASEBALL COACH/TEACHER- HIGH SCHOOL

F. JEREMY BEENE- SCIENCE TEACHER- HIGH SCHOOL

G. TREVOR MATLOCK- HISTORY TEACHER- HIGH SCHOOL

H. TIFFANY LINDLY- HEALTH/SAFETY TEACHER- HIGH SCHOOL

I. STERRETTE COFFMAN- ENGLISH/RESOURCE SPEC ED TEACHER- MIDDLE SCHOOL

J. SHERRY VEVERKA- PARAPROFESSIONAL- MIDDLE SCHOOL

K. JADE JOHNSON- PARAPROFESSIONAL- CENTRAL

L. VOTE TO APPROVE OR DISAPPROVE EMPLOYMENT OF JENNIFER WILLIAMS, SUPPORT EMPLOYEE

MOTION TO APPROVE THE HIRING OF:

A. RE-EMPLOYMENT OF ALL CAREER TEACHERS AS RECOMMENDED BY THE BUILDING

C. RE-EMPLOYMENT OF ALL PROBATIONARY TEACHERS AS RECOMMENDED BY THE BUILDING PRINCIPALS FOR THE 2019-2020 SCHOOL YEAR
(ADDENDUM A)

D. JENNA PRATT- TEACHER- MIDDLE SCHOOL

E. CADE CLAY- HEAD BASEBALL COACH/TEACHER- HIGH SCHOOL

F. JEREMY BEENE- SCIENCE TEACHER- HIGH SCHOOL

G. TREVOR MATLOCK- HISTORY TEACHER- HIGH SCHOOL

H. TIFFANY LINDLY- HEALTH/SAFETY TEACHER- HIGH SCHOOL

I. STERRETTE COFFMAN- ENGLISH/RESOURCE SPEC ED TEACHER- MIDDLE SCHOOL

J. SHERRY VEVERKA- PARAPROFESSIONAL- MIDDLE SCHOOL

K. JADE JOHNSON- PARAPROFESSIONAL- CENTRAL

L. MOTION TO **DISAPPROVE EMPLOYMENT** OF JENNIFER WILLIAMS, SUPPORT EMPLOYEE Passed with a motion by Claire Downing and a second by Brent Bolen.

Brent Bolen: Yea

Donny Butler: Absent

Darrell Courtney: Abstain

Claire Downing: Yea

Jerry Robinson: Absent

Yea: 2, Nay: 0, Absent: 2, Abstain: 1

22. CONSIDER AND POSSIBLE ACTION ON ANY MATTER NOT KNOWN ABOUT OR WHICH COULD NOT HAVE BEEN REASONABLY FORSEEN PRIOR TO THE TIME OF PREPARATION OF THE AGENDA FOR THE REGULARLY SCHEDULED MEETING.

23. VOTE TO ADJOURN

Motion to adjourn at 6:15. Passed with a motion by Darrell Courtney and a second by Claire Downing.

Brent Bolen: Yea

Donny Butler: Absent

Darrell Courtney: Yea

Claire Downing: Yea

Jerry Robinson: Absent

Yea: 3, Nay: 0, Absent: 2

Meeting Adjournment Time: 6:15 PM

BRENT BOLEN, PRESIDENT



DAWN BOURNE, MINUTES CLERK

GENERAL FUND: (Fund 11)				
BEGINNING BANK BALANCE	1,918,592.71			
REVENUE				
TOTAL NEW REVENUE FOR MAY 31, 2019	992,239.85			
DISBURSEMENTS				
WARRANTS PAID	(1,002,503.32)			
		5/31/2018	5/31/2017	5/31/2016
GENERAL FUND - ENDING BANK BALANCE (INB)	1,908,329.24	2,039,783.79	2,022,983.35	1,987,842.43
LESS OUTSTANDING WARRANTS	(1,763,310.85)			
LESS RESERVES FOR OPEN ENCUMBRANCES	0.00			
		5/31/2018	5/31/2017	5/31/2016
GENERAL FUND - FUND BALANCE AS OF: MAY 3	145,018.39	523,439.71	260,669.47	201,454.52

5 MILL BUILDING FUND: (Fund 21)				
BEGINNING BANK BALANCE	276,152.47			
REVENUE				
TOTAL NEW REVENUE FOR MAY 31, 2019	4,767.73			
DISBURSEMENTS				
WARRANTS PAID	0.00			
5M BLDG FUND - ENDING BANK BALANCE (INB)	280,920.20			
LESS OUTSTANDING WARRANTS	0.00			
LESS RESERVES FOR OPEN ENCUMBRANCES	0.00			
5M BLDG FUND - FUND BAL AS OF MAY 31, 20	280,920.20			

CHILD NUTRITION FUND: (Fund 22)				
BEGINNING BANK BALANCE	519,977.20			
REVENUE				
TOTAL NEW REVENUE FOR MAY 31, 2019	183,439.84			
DISBURSEMENTS				
WARRANTS PAID	(105,508.54)			
CHILD NUTRITION FUND - ENDING BANK BAL	597,908.50			
LESS OUTSTANDING WARRANTS	(58,453.25)			
LESS RESERVES FOR OPEN ENCUMBRANCES	0.00			
CHILD NUTR FUND - FUND BAL AS OF MAY 31,	539,455.25			

SINKING FUND: (Fund 41)				
BEGINNING BANK BALANCE	730,762.52			
REVENUE				
TOTAL NEW REVENUE FOR MAY 31, 2019	21,284.75			
DISBURSEMENTS				
WARRANTS PAID	(236,357.50)			
LESS OUTSTANDING WARRANTS	0.00			
SINKING FUND - FUND BAL AS OF MAY 31, 2019	515,689.77			

BOND FUND 2013: (FUND 36-BUILDING)

BEGINNING BANK BALANCE	0.00
REVENUE	
TOTAL NEW REVENUE FOR MAY 31, 2019	0.00
DISBURSEMENTS	
WARRANTS PAID	0.00
BOND FUND -FUND BAL AS OF MAY 31, 2019	0.00
LESS OUTSTANDING WARRANTS	0.00
LESS RESERVES FOR OPEN ENCUMBRANCES	0.00
BOND FUND - FUND BAL AS OF MAY 31, 2019	0.00

BOND FUND 2013: (FUND 37-TRANSPORTATION)

BEGINNING BANK BALANCE	0.00
REVENUE	
TOTAL NEW REVENUE FOR MAY 31, 2019	0.00
DISBURSEMENTS	
WARRANTS PAID	0.00
BOND FUND -FUND BAL AS OF MAY 31, 2019	0.00
LESS OUTSTANDING WARRANTS	0.00
LESS RESERVES FOR OPEN ENCUMBRANCES	0.00
BOND FUND - FUND BAL AS OF MAY 31, 2019	0.00

BOND FUND 2018: (FUND 31-BUILDING)

BEGINNING BANK BALANCE	53,260.16
REVENUE	
TOTAL NEW REVENUE FOR MAY 31, 2019	0.00
DISBURSEMENTS	
WARRANTS PAID	0.00
BOND FUND -FUND BAL AS OF MAY 31, 2019	53,260.16
LESS OUTSTANDING WARRANTS	0.00
LESS RESERVES FOR OPEN ENCUMBRANCES	0.00
BOND FUND - FUND BAL AS OF MAY 31, 2019	53,260.16

BOND FUND 2018: (FUND 32-TRANSPORTATION)

BEGINNING BANK BALANCE	0.00
REVENUE	
TOTAL NEW REVENUE FOR MAY 31, 2019	0.00
DISBURSEMENTS	
WARRANTS PAID	0.00
BOND FUND -FUND BAL AS OF MAY 31, 2019	0.00
LESS OUTSTANDING WARRANTS	0.00
LESS RESERVES FOR OPEN ENCUMBRANCES	0.00
BOND FUND - FUND BAL AS OF MAY 31, 2019	0.00

DEBT REPAYMENT SCHEDULES

REPAYMENT SCHEDULE/BOND ISSUE OF 2014

PAYMENT DATE:		PRINCIPAL	INTEREST	TOTAL
July 1, 2016	0.000%		20,520.00	20,520.00
January 1, 2017			5,130.00	5,130.00
July 1, 2017	1.500%	270,000.00	5,130.00	275,130.00
January 1, 2018			3,105.00	3,105.00
July 1, 2018	1.000%	270,000.00	3,105.00	273,105.00
January 1, 2019			1,755.00	1,755.00
July 1, 2019	1.300%	270,000.00	1,755.00	271,755.00
		TOTALS	40,500.00	850,500.00

REPAYMENT SCHEDULE/COMBINED BOND ISSUE OF 2017 (SERIES A)

PAYMENT DATE:		PRINCIPAL	INTEREST	TOTAL
JUNE 1, 2017	0.000%			
December 1, 2017				
June 1, 2018			3,300.00	3,300.00
December 1, 2018			1,650.00	1,650.00
JUNE 1, 2019	1.500%	220,000.00	1,650.00	221,650.00
		TOTALS	6,600.00	226,600.00

REPAYMENT SCHEDULE/COMBINED BOND ISSUE OF 2017 (SERIES B)

PAYMENT DATE:		PRINCIPAL	INTEREST	TOTAL
July 1, 2017				
January 1, 2018				
July 1, 2018				
January 1, 2019				
JULY 1, 2019	1.650%	165,000.00	49,500.00	214,500.00
January 1, 2020			11,013.75	11,013.75
JULY 1, 2020	1.650%	445,000.00	11,013.75	456,013.75
January 1, 2021			7,342.50	7,342.50
JULY 1, 2021	1.650%	445,000.00	7,342.50	452,342.50
January 1, 2022			3671.25	3671.25
JULY 1, 2022	1.650%	445,000.00	3671.25	448671.25
		TOTALS	93,555.00	1,593,555.00

REPAYMENT SCHEDULE/COMBINED BOND ISSUE OF 2018

PAYMENT DATE:		PRINCIPAL	INTEREST	TOTAL
June 1, 2019	0.000%		14,707.50	14,707.50
December 1, 2019			7,353.75	7,353.75
June 1, 2020	2.650%	165,000.00	7,353.75	172,353.75
December 1, 2020			5,167.50	5,167.50
June 1, 2021	2.650%	195,000.00	5,167.50	200,167.50
December 1, 2021			2,583.75	2,583.75
June 1, 2022	2.650%	195,000.00	2,583.75	197,583.75
		TOTALS	44,917.50	599,917.50

IDABEL PUBLIC SCHOOLS

Balance Sheet

Options: Fiscal Years: 2018-2019, Funds: 11-41, As Of Date: 5/31/2019

Assets				
Cash				
11	2018	GENERAL FUND FOR OP		\$295.33
11	2019	GENERAL FUND FOR OP		\$1,908,033.91
			Fund 11 Total	\$1,908,329.24
21	2018	5 MILL BUILDING FUND		\$0.00
21	2019	5 MILL BUILDING FUND		\$280,920.20
			Fund 21 Total	\$280,920.20
22	2018	CHILD NUTRITION FUND		\$24.94
22	2019	CHILD NUTRITION FUND		\$597,883.56
			Fund 22 Total	\$597,908.50
31	2018	BUILDING BOND 2018		\$370,188.13
31	2019	BUILDING BOND 2018		(\$316,927.97)
			Fund 31 Total	\$53,260.16
32	2018	TRANSPORTATION BOND 2018		\$95,000.00
32	2019	TRANSPORTATION BOND 2018		(\$95,000.00)
			Fund 32 Total	\$0.00
36	2018	BUILDING BOND - 13-14		\$0.00
36	2019	BUILDING BOND - 13-14		\$0.00
			Fund 36 Total	\$0.00
37	2018	TRANSPORTATION BOND - 13-14		\$0.00
37	2019	TRANSPORTATION BOND - 13-14		\$0.00
			Fund 37 Total	\$0.00
41	2018	SINKING FUND		\$0.00
41	2019	SINKING FUND		\$515,689.77
			Fund 41 Total	\$515,689.77
			Cash Total	\$3,356,107.87
Investments				
Investments Total				
Revenue Receivable				
11	2018	GENERAL FUND FOR OP		\$0.00
11	2019	GENERAL FUND FOR OP		\$1,130,853.13
			Fund 11 Total	\$1,130,853.13
21	2018	5 MILL BUILDING FUND		\$0.00
21	2019	5 MILL BUILDING FUND		(\$20,104.45)
			Fund 21 Total	(\$20,104.45)
22	2018	CHILD NUTRITION FUND		\$0.00
22	2019	CHILD NUTRITION FUND		(\$25,784.15)
			Fund 22 Total	(\$25,784.15)
31	2018	BUILDING BOND 2018		(\$460,000.00)
			Fund 31 Total	(\$460,000.00)
32	2018	TRANSPORTATION BOND 2018		(\$95,000.00)
			Fund 32 Total	(\$95,000.00)
36	2018	BUILDING BOND - 13-14		\$0.00
36	2019	BUILDING BOND - 13-14		(\$250.00)
			Fund 36 Total	(\$250.00)
37	2018	TRANSPORTATION BOND - 13-14		\$0.00
37	2019	TRANSPORTATION BOND - 13-14		(\$500,000.00)
			Fund 37 Total	(\$500,000.00)

Balance Sheet

Options: Fiscal Years: 2018-2019, Funds: 11-41, As Of Date: 5/31/2019

41	2018	SINKING FUND		\$0.00
41	2019	SINKING FUND		
			Fund 41 Total	<u>(\$1,235,452.27)</u>
			Revenue Receivable Total	<u>(\$1,205,737.74)</u>
			Assets Total	<u><u>\$2,150,370.13</u></u>

Liabilities, Reserves and Fund Balance

Outstanding Warrants

11	2018	GENERAL FUND FOR OP		\$295.33
11	2019	GENERAL FUND FOR OP		
			Fund 11 Total	<u>\$1,763,015.52</u>
21	2018	5 MILL BUILDING FUND		\$0.00
21	2019	5 MILL BUILDING FUND		
			Fund 21 Total	<u>\$0.00</u>
22	2018	CHILD NUTRITION FUND		\$24.94
22	2019	CHILD NUTRITION FUND		
			Fund 22 Total	<u>\$58,428.31</u>
31	2018	BUILDING BOND 2018		\$0.00
31	2019	BUILDING BOND 2018		
			Fund 31 Total	<u>\$0.00</u>
32	2019	TRANSPORTATION BOND 2018		\$0.00
			Fund 32 Total	<u>\$0.00</u>
36	2018	BUILDING BOND - 13-14		\$0.00
36	2019	BUILDING BOND - 13-14		
			Fund 36 Total	<u>\$0.00</u>
37	2018	TRANSPORTATION BOND - 13-14		\$0.00
37	2019	TRANSPORTATION BOND - 13-14		
			Fund 37 Total	<u>\$0.00</u>
41	2018	SINKING FUND		\$0.00
41	2019	SINKING FUND		
			Fund 41 Total	<u>\$0.00</u>
			Outstanding Warrants Total	<u>\$1,821,764.10</u>

Fund Balance

11	2018	GENERAL FUND FOR OP		\$0.00
11	2019	GENERAL FUND FOR OP		
			Fund 11 Total	<u>\$1,275,871.52</u>
21	2018	5 MILL BUILDING FUND		\$0.00
21	2019	5 MILL BUILDING FUND		
			Fund 21 Total	<u>\$260,815.75</u>
22	2018	CHILD NUTRITION FUND		\$0.00
22	2019	CHILD NUTRITION FUND		
			Fund 22 Total	<u>\$513,671.10</u>
31	2018	BUILDING BOND 2018		(\$89,811.87)
31	2019	BUILDING BOND 2018		
			Fund 31 Total	<u>(\$316,927.97)</u>
32	2019	TRANSPORTATION BOND 2018		(\$95,000.00)
			Fund 32 Total	<u>(\$95,000.00)</u>
36	2018	BUILDING BOND - 13-14		\$0.00
36	2019	BUILDING BOND - 13-14		
			Fund 36 Total	<u>(\$250.00)</u>
37	2018	TRANSPORTATION BOND - 13-14		\$0.00

IDABEL PUBLIC SCHOOLS**Balance Sheet****Options:** Fiscal Years: 2018-2019, Funds: 11-41, As Of Date: 5/31/2019

37	2019	TRANSPORTATION BOND - 13-14			(\$500,000.00)
			Fund 37 Total		(\$500,000.00)
41	2018	SINKING FUND			\$0.00
41	2019	SINKING FUND			(\$719,762.50)
			Fund 41 Total		(\$719,762.50)
			Fund Balance Total		\$328,606.03
			Liabilities, Reserves and Fund Balance Total		<u>\$2,150,370.13</u>

IDABEL PUBLIC SCHOOLS

Revenue By Month

Options: Fiscal Year: 2019, Funds: 11-41

Account	Jul	Aug	Sep	Oct	Nov	Dec	Jan	Feb	Mar	April	May	Jun	Total
AR 1110	\$1,437.94	\$0.00	\$0.00	\$0.00	\$0.00	\$53,000.15	\$662,382.09	\$503,616.74	\$87,188.72	\$265,664.28	\$54,503.78	\$0.00	\$1,627,793.70
AR 1120	\$21,728.78	\$28,687.15	\$7,688.12	\$12,709.31	\$4,472.66	\$1,298.30	\$4,585.49	\$11,822.29	\$6,504.57	\$6,134.57	\$4,766.40	\$0.00	\$110,397.64
AR 1130	\$869.63	\$0.00	\$50.48	\$0.00	\$0.00	\$0.00	\$0.00	\$0.00	\$0.00	\$0.00	\$156.40	\$0.00	\$1,076.51
AR 1311	\$2,856.00	\$2,872.00	\$1,889.68	\$1,574.24	\$1,652.80	\$1,465.06	\$1,428.61	\$2,075.57	\$2,997.13	\$2,546.05	\$2,998.99	\$0.00	\$24,356.13
AR 1510	\$0.00	\$0.00	\$0.00	\$0.00	\$0.00	\$0.00	\$0.00	\$860.00	\$0.00	\$0.00	\$0.00	\$0.00	\$860.00
AR 1550	\$2,362.52	\$0.00	\$155.70	\$0.00	\$39.73	\$0.00	\$244.69	\$397.26	\$0.00	\$0.00	\$0.00	\$0.00	\$3,199.90
AR 1590	\$9,428.19	\$5,943.94	\$4,680.27	\$27,082.87	\$4,156.75	\$21,015.64	\$4,831.19	\$7,884.97	\$23,131.66	\$4,312.37	\$17,553.28	\$0.00	\$130,021.13
AR 1610	\$0.00	\$0.00	\$0.00	\$0.00	\$0.00	\$10,000.00	\$24,000.00	\$0.00	\$0.00	\$0.00	\$0.00	\$0.00	\$34,000.00
AR 1650	\$0.00	\$0.00	\$0.00	\$0.00	\$0.00	\$1,878.24	\$0.00	\$0.00	\$0.00	\$0.00	\$0.00	\$0.00	\$1,878.24
AR 1690	\$0.00	\$4,815.38	\$0.00	\$0.00	\$0.00	\$0.00	\$0.00	\$0.00	\$0.00	\$3,320.24	\$0.00	\$0.00	\$8,135.62
AR 2100	\$20,732.19	\$1,406.62	\$846.89	\$492.95	\$272.78	\$4,798.22	\$54,176.56	\$55,296.57	\$4,524.69	\$34,787.50	\$3,557.46	\$0.00	\$180,892.43
AR 2200	\$2,668.16	\$2,722.91	\$3,470.86	\$2,878.37	\$5,291.50	\$3,025.20	\$2,773.03	\$3,693.90	\$2,927.44	\$3,679.58	\$4,294.61	\$0.00	\$37,425.56
AR 3120	\$39,503.42	\$42,825.67	\$41,846.22	\$36,280.58	\$39,893.10	\$36,562.31	\$36,795.44	\$53,680.77	\$33,890.16	\$40,303.27	\$42,800.47	\$0.00	\$444,381.41
AR 3130	\$3,507.07	\$4,213.84	\$4,502.78	\$4,410.18	\$4,020.01	\$3,450.87	\$3,582.82	\$4,039.69	\$4,315.76	\$4,628.72	\$4,336.70	\$0.00	\$45,008.44
AR 3140	\$14,424.85	\$9,009.02	\$14,954.92	\$15,305.04	\$11,276.77	\$12,493.55	\$20,448.46	\$17,051.24	\$10,900.62	\$13,534.54	\$10,293.21	\$0.00	\$149,692.22
AR 3150	\$61.00	\$47.54	\$95.70	\$51.03	\$87.09	\$19.14	\$79.75	\$47.85	\$26.15	\$71.78	\$33.17	\$0.00	\$620.20
AR 3210	\$0.00	\$438,314.00	\$547,894.00	\$493,103.00	\$493,104.00	\$493,104.00	\$480,744.00	\$491,044.00	\$491,044.00	\$491,044.00	\$545,604.00	\$0.00	\$4,964,999.00
AR 3250	\$0.00	\$92,985.85	\$92,985.85	\$92,985.86	\$92,985.85	\$112,776.52	\$96,943.98	\$96,944.00	\$96,943.98	\$96,943.99	\$96,943.98	\$0.00	\$969,439.86
AR 3310	\$0.00	\$0.00	\$0.00	\$0.00	\$0.00	\$24,296.40	\$0.00	\$12,148.20	\$0.00	\$0.00	\$12,148.20	\$0.00	\$48,592.80
AR 3415	\$0.00	\$0.00	\$0.00	\$0.00	\$0.00	\$10,188.75	\$0.00	\$0.00	\$0.00	\$0.00	\$0.00	\$0.00	\$10,188.75
AR 3420	\$0.00	\$5,261.03	\$5,261.03	\$5,261.03	\$5,261.03	\$5,261.04	\$5,514.13	\$5,303.21	\$5,303.22	\$5,303.21	\$5,303.22	\$0.00	\$53,032.15
AR 3430	\$4,667.81	\$0.00	\$0.00	\$0.00	\$4,667.81	\$0.00	\$4,667.81	\$0.00	\$0.00	\$0.00	\$4,667.83	\$0.00	\$18,671.26
AR 3440	\$0.00	\$0.00	\$0.00	\$3,272.50	\$0.00	\$0.00	\$0.00	\$0.00	\$0.00	\$0.00	\$0.00	\$0.00	\$3,272.50
AR 3720	\$0.00	\$0.00	\$0.00	\$0.00	\$0.00	\$0.00	\$0.00	\$3,781.09	\$0.00	\$0.00	\$3,781.10	\$0.00	\$7,562.19
AR 3811	\$0.00	\$0.00	\$3,410.00	\$0.00	\$0.00	\$7,810.00	\$0.00	\$0.00	\$3,410.00	\$0.00	\$7,810.00	\$0.00	\$22,440.00
AR 3812	\$0.00	\$0.00	\$9,126.00	\$0.00	\$0.00	\$9,125.00	\$0.00	\$0.00	\$9,123.00	\$0.00	\$9,125.00	\$0.00	\$36,499.00
AR 4130	\$0.00	\$1,269.03	\$854.16	\$1,454.26	\$0.00	\$1,134.76	\$0.00	\$0.00	\$0.00	\$598.17	\$0.00	\$0.00	\$5,310.38
AR 4140	\$4,307.41	\$0.00	\$0.00	\$0.00	\$15,159.75	\$0.00	\$3,096.12	\$3,366.66	\$3,226.86	\$8,986.74	\$9,079.90	\$0.00	\$47,223.44
AR 4163	\$1,512.85	\$0.00	\$0.00	\$0.00	\$0.00	\$0.00	\$0.00	\$0.00	\$0.00	\$0.00	\$2,963.09	\$0.00	\$4,475.94
AR 4210	\$0.00	\$1,384.55	\$0.00	\$0.00	\$2,347.38	\$169,726.78	\$40,247.32	\$78,831.27	\$0.00	\$77,148.49	\$39,968.31	\$0.00	\$409,654.10
AR 4271	\$0.00	\$0.00	\$0.00	\$0.00	\$0.00	\$15,372.83	\$6,684.53	\$6,680.56	\$0.00	\$15,211.12	\$6,681.12	\$0.00	\$50,630.16
AR 4310	\$447.99	\$0.00	\$0.00	\$24,836.20	\$24,548.59	\$20,514.32	\$23,367.38	\$20,029.46	\$22,435.50	\$23,475.50	\$22,970.40	\$0.00	\$182,625.34
AR 4340	\$0.00	\$0.00	\$0.00	\$8,437.98	\$1,644.63	\$1,454.32	\$804.32	\$804.32	\$804.32	\$1,794.86	\$804.32	\$0.00	\$16,549.07
AR 4442	\$0.00	\$0.00	\$0.00	\$0.00	\$0.00	\$19,663.55	\$0.00	\$0.00	\$0.00	\$0.00	\$0.00	\$0.00	\$19,663.55
AR 4443	\$53,790.94	\$0.00	\$0.00	\$0.00	\$0.00	\$38,019.89	\$14,644.24	\$26,943.30	\$0.00	\$18,626.67	\$39,892.30	\$0.00	\$191,917.34
AR 4470	\$0.00	\$0.00	\$0.00	\$0.00	\$0.00	\$806.25	\$0.00	\$14,000.00	\$0.00	\$0.00	\$917.82	\$0.00	\$15,724.07
AR 4550	\$2,635.17	\$0.00	\$0.00	\$8,436.13	\$0.00	\$0.00	\$6,108.17	\$0.00	\$0.00	\$0.00	\$4,314.50	\$0.00	\$21,493.97
AR 4611	\$0.00	\$135,661.69	\$0.00	\$0.00	\$0.00	\$0.00	\$0.00	\$26,305.53	\$0.00	\$0.00	\$0.00	\$0.00	\$161,967.22
AR 4689	\$0.00	\$0.00	\$0.00	\$50,000.00	\$24,767.30	\$0.00	\$35,430.18	\$49,792.89	\$27,536.49	\$23,116.37	\$68,899.40	\$0.00	\$279,542.63
AR 4710	\$0.00	\$0.00	\$0.00	\$146,879.63	\$87,364.69	\$0.00	\$72,610.15	\$136,063.88	\$78,678.45	\$70,101.11	\$115,863.28	\$0.00	\$707,561.19
AR 4720	\$0.00	\$0.00	\$0.00	\$79,404.70	\$47,968.10	\$0.00	\$41,980.38	\$79,111.52	\$45,462.16	\$36,326.50	\$58,096.72	\$0.00	\$388,350.08
AR 4740	\$55,575.67	\$0.00	\$0.00	\$0.00	\$0.00	\$0.00	\$0.00	\$0.00	\$0.00	\$0.00	\$0.00	\$0.00	\$55,575.67
AR 4821	\$0.00	\$0.00	\$0.00	\$0.00	\$0.00	\$0.00	\$0.00	\$24,929.10	\$0.00	\$0.00	\$0.00	\$0.00	\$24,929.10

IDABEL PUBLIC SCHOOLS

Revenue By Month

Options: Fiscal Year: 2019, Funds: 11-41

Account	Jul	Aug	Sep	Oct	Nov	Dec	Jan	Feb	Mar	April	May	Jun	Total
AR 5160	\$0.00	\$1,535.86	\$1,186.67	\$2,114.90	\$4,416.78	\$441.66	\$2,594.47	\$191.63	\$1,753.55	\$2,781.73	\$603.21	\$0.00	\$17,620.46
AR 5190	\$0.00	\$0.00	\$15,078.79	\$141.83	\$0.00	\$0.00	\$0.00	\$0.00	\$0.00	\$0.00	\$0.00	\$0.00	\$15,220.62
AR 5600	\$0.00	\$0.00	\$0.00	\$0.00	\$0.00	\$0.00	\$0.00	\$117.13	\$738.07	\$153.52	\$0.00	\$0.00	\$1,008.72
AR 6110	\$3,004,613.22	\$0.00	\$0.00	\$0.00	\$0.00	\$0.00	\$0.00	\$0.00	\$0.00	\$0.00	\$0.00	\$0.00	\$3,004,613.22
Total	\$3,247,130.81	\$778,956.08	\$758,978.12	\$1,017,112.59	\$875,399.10	\$1,078,702.75	\$1,650,765.31	\$1,736,854.60	\$962,866.50	\$1,750,594.88	\$1,201,732.17	\$0.00	\$14,556,092.91

IDABEL PUBLIC SCHOOLS

Revenue Analysis

Options: Type of Revenue: Estimated, As Of Date: 5/31/2019

	Estimated Revenue	Revenue Collected	Revenue Receivable	Unappropriated Receipts	% Rev Collected	Current Month
Fund - 11 GENERAL FUND FOR OP						
Project - 000 NON-CATEGORICAL EXP						
Series - 1000						
Source - 1110 AD VALOREM TAX LEVY (CURRENT)	\$891,822.56	\$910,830.80	\$0.00	\$19,008.24	102.13%	\$30,524.51
Source - 1120 AD VALOREM TAX LEVY (PR.YRS)	\$0.00	\$64,166.44	\$0.00	\$64,166.44	N/A	\$2,762.00
Source - 1130 REVENUE IN LIEU OF TAXES	\$0.00	\$607.22	\$0.00	\$607.22	N/A	\$87.59
Source - 1311 NOW ACCNT INTEREST	\$0.00	\$24,356.13	\$0.00	\$24,356.13	N/A	\$2,998.99
Source - 1510 INSURANCE LOSS RECOVERIES	\$0.00	\$860.00	\$0.00	\$860.00	N/A	\$0.00
Source - 1550 WORKER'S COMPENSATION	\$3,199.90	\$3,199.90	\$0.00	\$0.00	100.00%	\$0.00
Source - 1590 MISCELLANEOUS REIMBURSEMENTS	\$63,800.55	\$60,058.66	\$3,741.89	\$0.00	94.14%	\$5,262.12
Source - 1650 DISTRICT CONTRACTS	\$1,878.24	\$1,878.24	\$0.00	\$0.00	100.00%	\$0.00
Series - 1000 Total	\$960,701.25	\$1,065,957.39	\$3,741.89	\$108,998.03	110.96%	\$41,635.21
Series - 2000						
Source - 2100 COUNTY 4 MILL AD VALOREM TAX	\$146,631.04	\$180,892.43	\$0.00	\$34,261.39	123.37%	\$3,557.46
Source - 2200 COUNTY APPORT. (MORTGAGE TAX)	\$37,628.20	\$37,425.56	\$202.64	\$0.00	99.46%	\$4,294.61
Series - 2000 Total	\$184,259.24	\$218,317.99	\$202.64	\$34,261.39	118.48%	\$7,852.07
Series - 3000						
Source - 3120 MOTOR VEHICLE COLLECTIONS	\$450,224.37	\$444,381.41	\$5,842.96	\$0.00	98.70%	\$42,800.47
Source - 3130 RURAL ELECTRIC COOP.TAX	\$44,484.83	\$45,008.44	\$0.00	\$523.61	101.18%	\$4,336.70
Source - 3140 STATE SCHOOL LAND EARNINGS	\$182,606.26	\$149,692.22	\$32,914.04	\$0.00	81.98%	\$10,293.21
Source - 3150 VEHICLE TAX STAMPS	\$674.12	\$620.20	\$53.92	\$0.00	92.00%	\$33.17
Source - 3210 FOUNDATION AND SALARY INCEN.	\$5,478,931.00	\$4,964,999.00	\$513,932.00	\$0.00	90.62%	\$545,604.00
Series - 3000 Total	\$6,156,920.58	\$5,604,701.27	\$552,742.92	\$523.61	91.03%	\$603,067.55
Series - 5000						
Source - 5160 ACTIVITY FUND REIMBURSEMENT	\$14,601.25	\$15,204.46	\$0.00	\$603.21	104.13%	\$603.21
Source - 5190 MISC.REVENUE TRANSFER	\$15,220.62	\$15,220.62	\$0.00	\$0.00	100.00%	\$0.00
Source - 5600 CORRECTING ENTRY	\$780.98	\$1,008.72	\$0.00	\$227.74	129.16%	\$0.00
Series - 5000 Total	\$30,602.85	\$31,433.80	\$0.00	\$830.95	102.72%	\$603.21
Series - 6000						
Source - 6110 CASH FORWARD-SURPLUS CASH FWD.	\$1,292,183.74	\$1,269,859.52	\$22,324.22	\$0.00	98.27%	\$0.00
Series - 6000 Total	\$1,292,183.74	\$1,269,859.52	\$22,324.22	\$0.00	98.27%	\$0.00
Project - 000 NON-CATEGORICAL EXP Total	\$8,624,667.66	\$8,190,269.97	\$579,011.67	\$144,613.98	94.96%	\$653,158.04
Project - 016 SCHOOL VEHICLE-PERSONAL USE						
Series - 1000						
Source - 1590 MISCELLANEOUS REIMBURSEMENTS	\$497.30	\$547.03	\$0.00	\$49.73	110.00%	\$49.73
Series - 1000 Total	\$497.30	\$547.03	\$0.00	\$49.73	110.00%	\$49.73
Project - 016 SCHOOL VEHICLE-PERSONAL USE Total	\$497.30	\$547.03	\$0.00	\$49.73	110.00%	\$49.73
Project - 017 MIFI-VERIZON						
Series - 1000						
Source - 1590 MISCELLANEOUS REIMBURSEMENTS	\$41,862.81	\$46,017.59	\$0.00	\$4,154.78	109.92%	\$4,154.78
Series - 1000 Total	\$41,862.81	\$46,017.59	\$0.00	\$4,154.78	109.92%	\$4,154.78

IDABEL PUBLIC SCHOOLS

Revenue Analysis

Options: Type of Revenue: Estimated, As Of Date: 5/31/2019

	Estimated Revenue	Revenue Collected	Revenue Receivable	Unappropriated Receipts	% Rev Collected	Current Month
Project - 017 MIFI-VERIZON Total	\$41,862.81	\$46,017.59	\$0.00	\$4,154.78	109.92%	\$4,154.78
Project - 019 ARVEST BANK GRANT						
Series - 5000						
Source - 5160 ACTIVITY FUND REIMBURSEMENT	\$2,416.00	\$2,416.00	\$0.00	\$0.00	100.00%	\$0.00
Series - 5000 Total	\$2,416.00	\$2,416.00	\$0.00	\$0.00	100.00%	\$0.00
Project - 019 ARVEST BANK GRANT Total	\$2,416.00	\$2,416.00	\$0.00	\$0.00	100.00%	\$0.00
Project - 021 ANONYMOUS DONOR-CLEET						
Series - 1000						
Source - 1590 MISCELLANEOUS REIMBURSEMENTS	\$0.00	\$10,000.00	\$0.00	\$10,000.00	N/A	\$0.00
Series - 1000 Total	\$0.00	\$10,000.00	\$0.00	\$10,000.00	N/A	\$0.00
Project - 021 ANONYMOUS DONOR-CLEET Total	\$0.00	\$10,000.00	\$0.00	\$10,000.00	N/A	\$0.00
Project - 023 CHOCTAW NATION - TPP						
Series - 1000						
Source - 1590 MISCELLANEOUS REIMBURSEMENTS	\$15,000.00	\$5,000.00	\$10,000.00	\$0.00	33.33%	\$0.00
Series - 1000 Total	\$15,000.00	\$5,000.00	\$10,000.00	\$0.00	33.33%	\$0.00
Project - 023 CHOCTAW NATION - TPP Total	\$15,000.00	\$5,000.00	\$10,000.00	\$0.00	33.33%	\$0.00
Project - 024 WEYCO -SAFETY GRANT						
Series - 1000						
Source - 1610 CONTRIBUTIONS/DONATIONS-PRIV.	\$10,000.00	\$10,000.00	\$0.00	\$0.00	100.00%	\$0.00
Series - 1000 Total	\$10,000.00	\$10,000.00	\$0.00	\$0.00	100.00%	\$0.00
Project - 024 WEYCO -SAFETY GRANT Total	\$10,000.00	\$10,000.00	\$0.00	\$0.00	100.00%	\$0.00
Project - 025 IDABEL FOUNDATION GRANTS						
Series - 1000						
Source - 1590 MISCELLANEOUS REIMBURSEMENTS	\$8,086.65	\$8,086.65	\$0.00	\$0.00	100.00%	\$8,086.65
Series - 1000 Total	\$8,086.65	\$8,086.65	\$0.00	\$0.00	100.00%	\$8,086.65
Project - 025 IDABEL FOUNDATION GRANTS Total	\$8,086.65	\$8,086.65	\$0.00	\$0.00	100.00%	\$8,086.65
Project - 132 SE-MARTHA A JOHNSON TRUST						
Series - 1000						
Source - 1610 CONTRIBUTIONS/DONATIONS-PRIV.	\$24,000.00	\$24,000.00	\$0.00	\$0.00	100.00%	\$0.00
Series - 1000 Total	\$24,000.00	\$24,000.00	\$0.00	\$0.00	100.00%	\$0.00
Project - 132 SE-MARTHA A JOHNSON TRUST Total	\$24,000.00	\$24,000.00	\$0.00	\$0.00	100.00%	\$0.00
Project - 282 HS - VOCAL MUSIC						
Series - 1000						
Source - 1590 MISCELLANEOUS REIMBURSEMENTS	\$150.00	\$150.00	\$0.00	\$0.00	100.00%	\$0.00
Series - 1000 Total	\$150.00	\$150.00	\$0.00	\$0.00	100.00%	\$0.00
Project - 282 HS - VOCAL MUSIC Total	\$150.00	\$150.00	\$0.00	\$0.00	100.00%	\$0.00
Project - 311 STF DEV-ADA						
Series - 6000						
Source - 6110 CASH FORWARD-SURPLUS CASH FWD.	\$0.00	\$3,911.00	\$0.00	\$3,911.00	N/A	\$0.00
Series - 6000 Total	\$0.00	\$3,911.00	\$0.00	\$3,911.00	N/A	\$0.00
Project - 311 STF DEV-ADA Total	\$0.00	\$3,911.00	\$0.00	\$3,911.00	N/A	\$0.00
Project - 317 DRIVER ED						
Series - 3000						
Source - 3440 DRIVER EDUCATION	\$3,272.50	\$3,272.50	\$0.00	\$0.00	100.00%	\$0.00
Series - 3000 Total	\$3,272.50	\$3,272.50	\$0.00	\$0.00	100.00%	\$0.00

IDABEL PUBLIC SCHOOLS

Revenue Analysis

Options: Type of Revenue: Estimated, As Of Date: 5/31/2019

	Estimated Revenue	Revenue Collected	Revenue Receivable	Unappropriated Receipts	% Rev Collected	Current Month
Project - 317 DRIVER ED Total	\$3,272.50	\$3,272.50	\$0.00	\$0.00	100.00%	\$0.00
Project - 319 ADULT ED MATCHING						
Series - 3000						
Source - 3430 ADULT EDUCATION MATCHING	\$18,671.26	\$18,671.26	\$0.00	\$0.00	100.00%	\$4,667.83
Series - 3000 Total	\$18,671.26	\$18,671.26	\$0.00	\$0.00	100.00%	\$4,667.83
Series - 6000						
Source - 6110 CASH FORWARD-SURPLUS CASH FWD.	\$0.00	\$1,522.49	\$0.00	\$1,522.49	N/A	\$0.00
Series - 6000 Total	\$0.00	\$1,522.49	\$0.00	\$1,522.49	N/A	\$0.00
Project - 319 ADULT ED MATCHING Total	\$18,671.26	\$20,193.75	\$0.00	\$1,522.49	108.15%	\$4,667.83
Project - 331 FLEX BENEFITS / CERT						
Series - 3000						
Source - 3250 EDUCATION FLEX.BENEFIT ALLOW.	\$10,874.76	\$10,540.15	\$334.61	\$0.00	96.92%	\$1,054.01
Series - 3000 Total	\$10,874.76	\$10,540.15	\$334.61	\$0.00	96.92%	\$1,054.01
Project - 331 FLEX BENEFITS / CERT Total	\$10,874.76	\$10,540.15	\$334.61	\$0.00	96.92%	\$1,054.01
Project - 332 FLEX BENEFITS / NON CERT						
Series - 3000						
Source - 3250 EDUCATION FLEX.BENEFIT ALLOW.	\$48,623.51	\$40,944.81	\$7,678.70	\$0.00	84.21%	\$4,097.30
Series - 3000 Total	\$48,623.51	\$40,944.81	\$7,678.70	\$0.00	84.21%	\$4,097.30
Project - 332 FLEX BENEFITS / NON CERT Total	\$48,623.51	\$40,944.81	\$7,678.70	\$0.00	84.21%	\$4,097.30
Project - 333 STATE TEXTBOOKS						
Series - 3000						
Source - 3420 STATE TEXTBOOK	\$58,455.90	\$53,032.15	\$5,423.75	\$0.00	90.72%	\$5,303.22
Series - 3000 Total	\$58,455.90	\$53,032.15	\$5,423.75	\$0.00	90.72%	\$5,303.22
Project - 333 STATE TEXTBOOKS Total	\$58,455.90	\$53,032.15	\$5,423.75	\$0.00	90.72%	\$5,303.22
Project - 334 CER MED PD BY STATE						
Series - 3000						
Source - 3250 EDUCATION FLEX.BENEFIT ALLOW.	\$621,075.60	\$603,942.48	\$17,133.12	\$0.00	97.24%	\$60,394.25
Series - 3000 Total	\$621,075.60	\$603,942.48	\$17,133.12	\$0.00	97.24%	\$60,394.25
Project - 334 CER MED PD BY STATE Total	\$621,075.60	\$603,942.48	\$17,133.12	\$0.00	97.24%	\$60,394.25
Project - 335 NC MED PD BY STATE						
Series - 3000						
Source - 3250 EDUCATION FLEX.BENEFIT ALLOW.	\$290,705.91	\$258,281.80	\$32,424.11	\$0.00	88.85%	\$25,699.68
Series - 3000 Total	\$290,705.91	\$258,281.80	\$32,424.11	\$0.00	88.85%	\$25,699.68
Project - 335 NC MED PD BY STATE Total	\$290,705.91	\$258,281.80	\$32,424.11	\$0.00	88.85%	\$25,699.68
Project - 338 OKLAHOMA PARENTS						
Series - 6000						
Source - 6110 CASH FORWARD-SURPLUS CASH FWD.	\$0.00	\$577.63	\$0.00	\$577.63	N/A	\$0.00
Series - 6000 Total	\$0.00	\$577.63	\$0.00	\$577.63	N/A	\$0.00
Project - 338 OKLAHOMA PARENTS Total	\$0.00	\$577.63	\$0.00	\$577.63	N/A	\$0.00
Project - 367 READING SUFFICIENCY						
Series - 3000						
Source - 3415 READING SUFFICIENCE ACT	\$10,188.75	\$10,188.75	\$0.00	\$0.00	100.00%	\$0.00
Series - 3000 Total	\$10,188.75	\$10,188.75	\$0.00	\$0.00	100.00%	\$0.00
Series - 6000						

IDABEL PUBLIC SCHOOLS

Revenue Analysis

Options: Type of Revenue: Estimated, As Of Date: 5/31/2019

	Estimated Revenue	Revenue Collected	Revenue Receivable	Unappropriated Receipts	% Rev Collected	Current Month
Source - 6110 CASH FORWARD-SURPLUS CASH FWD.	\$0.00	\$9,539.55	\$0.00	\$9,539.55	N/A	\$0.00
Series - 6000 Total	\$0.00	\$9,539.55	\$0.00	\$9,539.55	N/A	\$0.00
Project - 367 READING SUFFICIENCY Total	\$10,188.75	\$19,728.30	\$0.00	\$9,539.55	193.63%	\$0.00
Project - 388 ALTERNATIVE ED GRANT Series - 3000						
Source - 3310 ALTERNATIVE AND HIGH CHALLENGE	\$48,592.80	\$48,592.80	\$0.00	\$0.00	100.00%	\$12,148.20
Series - 3000 Total	\$48,592.80	\$48,592.80	\$0.00	\$0.00	100.00%	\$12,148.20
Series - 6000						
Source - 6110 CASH FORWARD-SURPLUS CASH FWD.	\$0.00	\$6,773.55	\$0.00	\$6,773.55	N/A	\$0.00
Series - 6000 Total	\$0.00	\$6,773.55	\$0.00	\$6,773.55	N/A	\$0.00
Project - 388 ALTERNATIVE ED GRANT Total	\$48,592.80	\$55,366.35	\$0.00	\$6,773.55	113.94%	\$12,148.20
Project - 411 COMPR HS PROG Series - 3000						
Source - 3811 COMP. HS VOC. SALARY REIM.	\$21,440.00	\$22,440.00	\$0.00	\$1,000.00	104.66%	\$7,810.00
Series - 3000 Total	\$21,440.00	\$22,440.00	\$0.00	\$1,000.00	104.66%	\$7,810.00
Project - 411 COMPR HS PROG Total	\$21,440.00	\$22,440.00	\$0.00	\$1,000.00	104.66%	\$7,810.00
Project - 412 VOCATIONAL PROGRAMS Series - 3000						
Source - 3812 VOC. PROG. INCENTIVE ASSIST.	\$36,499.00	\$36,499.00	\$0.00	\$0.00	100.00%	\$9,125.00
Series - 3000 Total	\$36,499.00	\$36,499.00	\$0.00	\$0.00	100.00%	\$9,125.00
Project - 412 VOCATIONAL PROGRAMS Total	\$36,499.00	\$36,499.00	\$0.00	\$0.00	100.00%	\$9,125.00
Project - 421 CARL PERKINS Series - 4000						
Source - 4821 CARL PERKINS	\$27,469.98	\$24,929.10	\$2,540.88	\$0.00	90.75%	\$0.00
Series - 4000 Total	\$27,469.98	\$24,929.10	\$2,540.88	\$0.00	90.75%	\$0.00
Project - 421 CARL PERKINS Total	\$27,469.98	\$24,929.10	\$2,540.88	\$0.00	90.75%	\$0.00
Project - 511 BASIC PROG, CY Series - 4000						
Source - 4210 TITLE I-BASIC PROGRAM	\$589,121.96	\$394,465.36	\$194,656.60	\$0.00	66.96%	\$39,968.31
Series - 4000 Total	\$589,121.96	\$394,465.36	\$194,656.60	\$0.00	66.96%	\$39,968.31
Project - 511 BASIC PROG, CY Total	\$589,121.96	\$394,465.36	\$194,656.60	\$0.00	66.96%	\$39,968.31
Project - 515 SCHOOL SUPPORT Series - 4000						
Source - 4210 TITLE I-BASIC PROGRAM	\$5,003.15	\$3,272.38	\$1,730.77	\$0.00	65.41%	\$0.00
Series - 4000 Total	\$5,003.15	\$3,272.38	\$1,730.77	\$0.00	65.41%	\$0.00
Project - 515 SCHOOL SUPPORT Total	\$5,003.15	\$3,272.38	\$1,730.77	\$0.00	65.41%	\$0.00
Project - 518 TITLE I PART D-NEGLECTED Series - 4000						
Source - 4210 TITLE I-BASIC PROGRAM	\$10,568.79	\$10,531.81	\$36.98	\$0.00	99.65%	\$0.00
Series - 4000 Total	\$10,568.79	\$10,531.81	\$36.98	\$0.00	99.65%	\$0.00
Project - 518 TITLE I PART D-NEGLECTED Total	\$10,568.79	\$10,531.81	\$36.98	\$0.00	99.65%	\$0.00
Project - 541 TITLE II PART A Series - 4000						
Source - 4210 TITLE I-BASIC PROGRAM	\$0.00	\$0.00	\$0.00	\$0.00	N/A	\$0.00
Source - 4271 PART A RECRUITMENT	\$102,725.99	\$50,630.16	\$52,095.83	\$0.00	49.29%	\$6,681.12
Series - 4000 Total	\$102,725.99	\$50,630.16	\$52,095.83	\$0.00	49.29%	\$6,681.12
Project - 541 TITLE II PART A Total	\$102,725.99	\$50,630.16	\$52,095.83	\$0.00	49.29%	\$6,681.12
Project - 552 TITLE IV, PART A, STUDENT SUPPORT, FORMULA GRANT Series - 4000						

IDABEL PUBLIC SCHOOLS

Revenue Analysis

Options: Type of Revenue: Estimated, As Of Date: 5/31/2019

	Estimated Revenue	Revenue Collected	Revenue Receivable	Unappropriated Receipts	% Rev Collected	Current Month
Source - 4442 TITLE IV-STUDENT SUPPORT & ACADE	\$19,663.55	\$19,663.55	\$0.00	\$0.00	100.00%	\$0.00
Series - 4000 Total	\$19,663.55	\$19,663.55	\$0.00	\$0.00	100.00%	\$0.00
Project - 552 TITLE IV, PART A, STUDENT SUPPORT, FORMULA GRANT Total	\$19,663.55	\$19,663.55	\$0.00	\$0.00	100.00%	\$0.00
Project - 553 LEARNING CENTERS						
Series - 4000						
Source - 4443 21ST CENTURY GRANT	\$180,285.60	\$100,097.36	\$80,188.24	\$0.00	55.52%	\$27,655.44
Series - 4000 Total	\$180,285.60	\$100,097.36	\$80,188.24	\$0.00	55.52%	\$27,655.44
Project - 553 LEARNING CENTERS Total	\$180,285.60	\$100,097.36	\$80,188.24	\$0.00	55.52%	\$27,655.44
Project - 554 21st CENTURY-SPECIAL PROJECTS						
Series - 4000						
Source - 4443 21ST CENTURY GRANT	\$80,819.00	\$38,029.04	\$42,789.96	\$0.00	47.05%	\$12,236.86
Series - 4000 Total	\$80,819.00	\$38,029.04	\$42,789.96	\$0.00	47.05%	\$12,236.86
Project - 554 21st CENTURY-SPECIAL PROJECTS Total	\$80,819.00	\$38,029.04	\$42,789.96	\$0.00	47.05%	\$12,236.86
Project - 561 INDIAN ED CURRENT YR						
Series - 4000						
Source - 4140 TITLE VI-IND, HAWAIIA, & ALASKA ED	\$74,048.00	\$42,916.03	\$31,131.97	\$0.00	57.96%	\$9,079.90
Series - 4000 Total	\$74,048.00	\$42,916.03	\$31,131.97	\$0.00	57.96%	\$9,079.90
Project - 561 INDIAN ED CURRENT YR Total	\$74,048.00	\$42,916.03	\$31,131.97	\$0.00	57.96%	\$9,079.90
Project - 563 J O'MALLEY CURR YR						
Series - 4000						
Source - 4550 JOHNSON O'MALLEY	\$20,540.00	\$18,858.80	\$1,681.20	\$0.00	91.81%	\$4,314.50
Series - 4000 Total	\$20,540.00	\$18,858.80	\$1,681.20	\$0.00	91.81%	\$4,314.50
Project - 563 J O'MALLEY CURR YR Total	\$20,540.00	\$18,858.80	\$1,681.20	\$0.00	91.81%	\$4,314.50
Project - 587 RURAL AND LOW INCOME						
Series - 4000						
Source - 4470 RURAL & LOW INCOME SCHOOLS	\$23,390.87	\$15,724.07	\$7,666.80	\$0.00	67.22%	\$917.82
Series - 4000 Total	\$23,390.87	\$15,724.07	\$7,666.80	\$0.00	67.22%	\$917.82
Project - 587 RURAL AND LOW INCOME Total	\$23,390.87	\$15,724.07	\$7,666.80	\$0.00	67.22%	\$917.82
Project - 591 TITLE VII-IMPACT AID						
Series - 4000						
Source - 4130 TITLE VII - IMPACT AID	\$3,067.56	\$4,459.52	\$0.00	\$1,391.96	145.38%	\$0.00
Series - 4000 Total	\$3,067.56	\$4,459.52	\$0.00	\$1,391.96	145.38%	\$0.00
Project - 591 TITLE VII-IMPACT AID Total	\$3,067.56	\$4,459.52	\$0.00	\$1,391.96	145.38%	\$0.00
Project - 592 TITLE VII-IMPACT AID-DISABLED						
Series - 4000						
Source - 4130 TITLE VII - IMPACT AID	\$119.63	\$850.86	\$0.00	\$731.23	711.24%	\$0.00
Series - 4000 Total	\$119.63	\$850.86	\$0.00	\$731.23	711.24%	\$0.00
Project - 592 TITLE VII-IMPACT AID-DISABLED Total	\$119.63	\$850.86	\$0.00	\$731.23	711.24%	\$0.00
Project - 613 SPEC ED STAFF DEVELOPMENT						
Series - 4000						
Source - 4310 INDIV.WITH DISABIL.IDEA --B	\$472.75	\$0.00	\$472.75	\$0.00	0.00%	\$0.00
Series - 4000 Total	\$472.75	\$0.00	\$472.75	\$0.00	0.00%	\$0.00
Project - 613 SPEC ED STAFF DEVELOPMENT Total	\$472.75	\$0.00	\$472.75	\$0.00	0.00%	\$0.00
Project - 615 ENGAGE/DEVELOP MONITOR MINI GRANT						
Series - 4000						

IDABEL PUBLIC SCHOOLS

Revenue Analysis

Options: Type of Revenue: Estimated, As Of Date: 5/31/2019

	Estimated Revenue	Revenue Collected	Revenue Receivable	Unappropriated Receipts	% Rev Collected	Current Month
Source - 4310 INDIV.WITH DISABIL.IDEA --B	\$3,551.22	\$1,416.96	\$2,134.26	\$0.00	39.90%	\$540.00
Series - 4000 Total	\$3,551.22	\$1,416.96	\$2,134.26	\$0.00	39.90%	\$540.00
Project - 615 ENGAGE/DEVELOP MONITOR MINI GRANT Total	\$3,551.22	\$1,416.96	\$2,134.26	\$0.00	39.90%	\$540.00
Project - 621 FLOW THRU CURRENT YR						
Series - 4000						
Source - 4310 INDIV.WITH DISABIL.IDEA --B	\$286,737.53	\$180,760.39	\$105,977.14	\$0.00	63.04%	\$22,430.40
Series - 4000 Total	\$286,737.53	\$180,760.39	\$105,977.14	\$0.00	63.04%	\$22,430.40
Project - 621 FLOW THRU CURRENT YR Total	\$286,737.53	\$180,760.39	\$105,977.14	\$0.00	63.04%	\$22,430.40
Project - 641 PRESCHOOL CURRENT YR						
Series - 4000						
Source - 4340 PRESCHOOL AGES 3-5 IDEA-B	\$21,486.87	\$16,549.07	\$4,937.80	\$0.00	77.02%	\$804.32
Series - 4000 Total	\$21,486.87	\$16,549.07	\$4,937.80	\$0.00	77.02%	\$804.32
Project - 641 PRESCHOOL CURRENT YR Total	\$21,486.87	\$16,549.07	\$4,937.80	\$0.00	77.02%	\$804.32
Project - 731 ADULT ED CURRENT YR						
Series - 4000						
Source - 4611 ADULT BASIC EDUCATION TIT.XIII	\$131,357.74	\$26,305.53	\$105,052.21	\$0.00	20.03%	\$0.00
Series - 4000 Total	\$131,357.74	\$26,305.53	\$105,052.21	\$0.00	20.03%	\$0.00
Project - 731 ADULT ED CURRENT YR Total	\$131,357.74	\$26,305.53	\$105,052.21	\$0.00	20.03%	\$0.00
Project - 732 ENGLISH LITERACY						
Series - 4000						
Source - 4611 ADULT BASIC EDUCATION TIT.XIII	\$28,000.00	\$0.00	\$28,000.00	\$0.00	0.00%	\$0.00
Series - 4000 Total	\$28,000.00	\$0.00	\$28,000.00	\$0.00	0.00%	\$0.00
Project - 732 ENGLISH LITERACY Total	\$28,000.00	\$0.00	\$28,000.00	\$0.00	0.00%	\$0.00
Project - 771 USDA GRANT- FFA GREENHOUSE						
Series - 4000						
Source - 4689 OTHER MISC. SOURCES OF FED.REV	\$50,000.00	\$50,000.00	\$0.00	\$0.00	100.00%	\$0.00
Series - 4000 Total	\$50,000.00	\$50,000.00	\$0.00	\$0.00	100.00%	\$0.00
Project - 771 USDA GRANT- FFA GREENHOUSE Total	\$50,000.00	\$50,000.00	\$0.00	\$0.00	100.00%	\$0.00
Project - 772 FEDERAL FOREST						
Series - 4000						
Source - 4163 FOREST RESERVE RENTALS	\$0.00	\$4,475.94	\$0.00	\$4,475.94	N/A	\$2,963.09
Series - 4000 Total	\$0.00	\$4,475.94	\$0.00	\$4,475.94	N/A	\$2,963.09
Project - 772 FEDERAL FOREST Total	\$0.00	\$4,475.94	\$0.00	\$4,475.94	N/A	\$2,963.09
Project - 777 READING LITERACY GRANT (ILG)						
Series - 4000						
Source - 4689 OTHER MISC. SOURCES OF FED.REV	\$434,266.00	\$229,542.63	\$204,723.37	\$0.00	52.86%	\$68,899.40
Series - 4000 Total	\$434,266.00	\$229,542.63	\$204,723.37	\$0.00	52.86%	\$68,899.40
Project - 777 READING LITERACY GRANT (ILG) Total	\$434,266.00	\$229,542.63	\$204,723.37	\$0.00	52.86%	\$68,899.40
Project - 799 PRIOR YEAR FEDERAL						
Series - 1000						
Source - 1590 MISCELLANEOUS REIMBURSEMENTS	\$0.00	\$0.00	\$0.00	\$0.00	N/A	\$0.00
Series - 1000 Total	\$0.00	\$0.00	\$0.00	\$0.00	N/A	\$0.00
Series - 4000						

IDABEL PUBLIC SCHOOLS

Revenue Analysis

Options: Type of Revenue: Estimated, As Of Date: 5/31/2019

	Estimated Revenue	Revenue Collected	Revenue Receivable	Unappropriated Receipts	% Rev Collected	Current Month
Source - 4140 TITLE VI-IND, HAWAIIA, & ALASKA ED	\$0.00	\$4,307.41	\$0.00	\$4,307.41	N/A	\$0.00
Source - 4210 TITLE I-BASIC PROGRAM	\$0.00	\$1,384.55	\$0.00	\$1,384.55	N/A	\$0.00
Source - 4310 INDIV.WITH DISABIL.IDEA --B	\$0.00	\$447.99	\$0.00	\$447.99	N/A	\$0.00
Source - 4443 21ST CENTURY GRANT	\$0.00	\$53,790.94	\$0.00	\$53,790.94	N/A	\$0.00
Source - 4550 JOHNSON O'MALLEY	\$0.00	\$2,635.17	\$0.00	\$2,635.17	N/A	\$0.00
Source - 4611 ADULT BASIC EDUCATION TIT.XIII	\$0.00	\$135,661.69	\$0.00	\$135,661.69	N/A	\$0.00
Series - 4000 Total	\$0.00	\$198,227.75	\$0.00	\$198,227.75	N/A	\$0.00
Project - 799 PRIOR YEAR FEDERAL Total	\$0.00	\$198,227.75	\$0.00	\$198,227.75	N/A	\$0.00
Fund - 11 GENERAL FUND FOR OP Total	\$11,987,776.60	\$10,856,923.47	\$1,517,822.72	\$386,969.59	90.57%	\$992,239.85
Report Total	\$11,987,776.60	\$10,856,923.47	\$1,517,822.72	\$386,969.59	90.57%	\$992,239.85

IDABEL PUBLIC SCHOOLS

Revenue Analysis

Options: Type of Revenue: Estimated, As Of Date: 5/31/2019

	Estimated Revenue	Revenue Collected	Revenue Receivable	Unappropriated Receipts	% Rev Collected	Current Month
Fund - 21 5 MILL BUILDING FUND						
Project - 000 NON-CATEGORICAL EXP						
Series - 1000						
Source - 1110 AD VALOREM TAX LEVY (CURRENT)	\$127,403.23	\$131,556.62	\$0.00	\$4,153.39	103.26%	\$4,360.65
Source - 1120 AD VALOREM TAX LEVY (PR.YRS)	\$0.00	\$7,728.70	\$0.00	\$7,728.70	N/A	\$394.57
Source - 1130 REVENUE IN LIEU OF TAXES	\$0.00	\$86.74	\$0.00	\$86.74	N/A	\$12.51
Series - 1000 Total	\$127,403.23	\$139,372.06	\$0.00	\$11,968.83	109.39%	\$4,767.73
Series - 6000						
Source - 6110 CASH FORWARD-SURPLUS CASH FWD.	\$263,825.18	\$263,825.18	\$0.00	\$0.00	100.00%	\$0.00
Series - 6000 Total	\$263,825.18	\$263,825.18	\$0.00	\$0.00	100.00%	\$0.00
Project - 000 NON-CATEGORICAL EXP Total	\$391,228.41	\$403,197.24	\$0.00	\$11,968.83	103.06%	\$4,767.73
Project - 020 PRINCIPAL/INTEREST ON BONDS						
Series - 1000						
Source - 1690 MISC. REV. FROM DIST.SOURCE	\$0.00	\$8,135.62	\$0.00	\$8,135.62	N/A	\$0.00
Series - 1000 Total	\$0.00	\$8,135.62	\$0.00	\$8,135.62	N/A	\$0.00
Project - 020 PRINCIPAL/INTEREST ON BONDS Total	\$0.00	\$8,135.62	\$0.00	\$8,135.62	N/A	\$0.00
Fund - 21 5 MILL BUILDING FUND Total	\$391,228.41	\$411,332.86	\$0.00	\$20,104.45	105.14%	\$4,767.73
Report Total	\$391,228.41	\$411,332.86	\$0.00	\$20,104.45	105.14%	\$4,767.73

IDABEL PUBLIC SCHOOLS

Revenue Analysis

Options: Type of Revenue: Estimated, As Of Date: 5/31/2019

	Estimated Revenue	Revenue Collected	Revenue Receivable	Unappropriated Receipts	% Rev Collected	Current Month
Fund - 22 CHILD NUTRITION FUND						
Project - 000 NON-CATEGORICAL EXP						
Series - 1000						
Source - 1590 MISCELLANEOUS REIMBURSEMENTS	\$161.20	\$161.20	\$0.00	\$0.00	100.00%	\$0.00
Series - 1000 Total	\$161.20	\$161.20	\$0.00	\$0.00	100.00%	\$0.00
Series - 6000						
Source - 6110 CASH FORWARD-SURPLUS CASH FWD.	\$337,193.36	\$64,955.55	\$272,237.81	\$0.00	19.26%	\$0.00
Series - 6000 Total	\$337,193.36	\$64,955.55	\$272,237.81	\$0.00	19.26%	\$0.00
Project - 000 NON-CATEGORICAL EXP Total	\$337,354.56	\$65,116.75	\$272,237.81	\$0.00	19.30%	\$0.00
Project - 332 FLEX BENEFITS / NON CERT						
Series - 3000						
Source - 3250 EDUCATION FLEX.BENEFIT ALLOW.	\$24,217.45	\$18,466.10	\$5,751.35	\$0.00	76.25%	\$1,843.79
Series - 3000 Total	\$24,217.45	\$18,466.10	\$5,751.35	\$0.00	76.25%	\$1,843.79
Project - 332 FLEX BENEFITS / NON CERT Total	\$24,217.45	\$18,466.10	\$5,751.35	\$0.00	76.25%	\$1,843.79
Project - 335 NC MED PD BY STATE						
Series - 3000						
Source - 3250 EDUCATION FLEX.BENEFIT ALLOW.	\$37,678.89	\$37,264.52	\$414.37	\$0.00	98.90%	\$3,854.95
Series - 3000 Total	\$37,678.89	\$37,264.52	\$414.37	\$0.00	98.90%	\$3,854.95
Project - 335 NC MED PD BY STATE Total	\$37,678.89	\$37,264.52	\$414.37	\$0.00	98.90%	\$3,854.95
Project - 385 CHILD NUTR PROGRAM						
Series - 3000						
Source - 3720 STATE MATCHING	\$7,903.99	\$7,562.19	\$341.80	\$0.00	95.68%	\$3,781.10
Series - 3000 Total	\$7,903.99	\$7,562.19	\$341.80	\$0.00	95.68%	\$3,781.10
Project - 385 CHILD NUTR PROGRAM Total	\$7,903.99	\$7,562.19	\$341.80	\$0.00	95.68%	\$3,781.10
Project - 763 LUNCHES						
Series - 4000						
Source - 4710 LUNCHES	\$677,292.50	\$707,561.19	\$0.00	\$30,268.69	104.47%	\$115,863.28
Series - 4000 Total	\$677,292.50	\$707,561.19	\$0.00	\$30,268.69	104.47%	\$115,863.28
Series - 6000						
Source - 6110 CASH FORWARD-SURPLUS CASH FWD.	\$0.00	\$9,044.16	\$0.00	\$9,044.16	N/A	\$0.00
Series - 6000 Total	\$0.00	\$9,044.16	\$0.00	\$9,044.16	N/A	\$0.00
Project - 763 LUNCHES Total	\$677,292.50	\$716,605.35	\$0.00	\$39,312.85	105.80%	\$115,863.28
Project - 764 BREAKFASTA						
Series - 4000						
Source - 4720 BREAKFASTS	\$371,499.72	\$388,350.08	\$0.00	\$16,850.36	104.54%	\$58,096.72
Series - 4000 Total	\$371,499.72	\$388,350.08	\$0.00	\$16,850.36	104.54%	\$58,096.72
Series - 6000						
Source - 6110 CASH FORWARD-SURPLUS CASH FWD.	\$0.00	\$263,193.65	\$0.00	\$263,193.65	N/A	\$0.00
Series - 6000 Total	\$0.00	\$263,193.65	\$0.00	\$263,193.65	N/A	\$0.00
Project - 764 BREAKFASTA Total	\$371,499.72	\$651,543.73	\$0.00	\$280,044.01	175.38%	\$58,096.72
Project - 766 SUMMER FOOD SERVICE						
Series - 4000						
Source - 4740 SUMMER FOOD SERV.PROG.	\$70,403.05	\$55,575.67	\$14,827.38	\$0.00	78.94%	\$0.00
Series - 4000 Total	\$70,403.05	\$55,575.67	\$14,827.38	\$0.00	78.94%	\$0.00
Project - 766 SUMMER FOOD SERVICE Total	\$70,403.05	\$55,575.67	\$14,827.38	\$0.00	78.94%	\$0.00
Fund - 22 CHILD NUTRITION FUND Total	\$1,526,350.16	\$1,552,134.31	\$293,572.71	\$319,356.86	101.69%	\$183,439.84

IDABEL PUBLIC SCHOOLS

Revenue Analysis

Options: Type of Revenue: Estimated, As Of Date: 5/31/2019

	Estimated Revenue	Revenue Collected	Revenue Receivable	Unappropriated Receipts	% Rev Collected	Current Month
Report Total	\$1,526,350.16	\$1,552,134.31	\$293,572.71	\$319,356.86	101.69%	\$183,439.84

IDABEL PUBLIC SCHOOLS

Revenue Analysis

Options: Type of Revenue: Estimated, As Of Date: 5/31/2019

	Estimated Revenue	Revenue Collected	Revenue Receivable	Unappropriated Receipts	% Rev Collected	Current Month
Fund - 41 SINKING FUND						
Project - 000 NON-CATEGORICAL EXP						
Series - 1000						
Source - 1110 AD VALOREM TAX LEVY (CURRENT)	\$0.00	\$585,406.28	\$0.00	\$585,406.28	N/A	\$19,618.62
Source - 1120 AD VALOREM TAX LEVY (PR.YRS)	\$0.00	\$38,502.50	\$0.00	\$38,502.50	N/A	\$1,609.83
Source - 1130 REVENUE IN LIEU OF TAXES	\$0.00	\$382.55	\$0.00	\$382.55	N/A	\$56.30
Series - 1000 Total	\$0.00	\$624,291.33	\$0.00	\$624,291.33	N/A	\$21,284.75
Series - 6000						
Source - 6110 CASH FORWARD-SURPLUS CASH FWD.	\$0.00	\$611,160.94	\$0.00	\$611,160.94	N/A	\$0.00
Series - 6000 Total	\$0.00	\$611,160.94	\$0.00	\$611,160.94	N/A	\$0.00
Project - 000 NON-CATEGORICAL EXP Total	\$0.00	\$1,235,452.27	\$0.00	\$1,235,452.27	N/A	\$21,284.75
Fund - 41 SINKING FUND Total	\$0.00	\$1,235,452.27	\$0.00	\$1,235,452.27	N/A	\$21,284.75
Report Total	\$0.00	\$1,235,452.27	\$0.00	\$1,235,452.27	N/A	\$21,284.75

Budget Analysis

Options: Year: 2018-2019, Date Range: 7/1/2018 - 6/30/2019, Print Detail: False

Classification	Appropriation	Encumbered	Paid	Encumbered Balance	Unencumbered Balance	% Enc Budget
2018-2019						
000 NON-CATEGORICAL EXP	10,297,395.56	6,845,611.93	6,794,819.21	50,792.72	3,451,783.63	66.48%
001 DISTRICT - UTILITIES	0.00	47,186.15	39,893.06	7,293.09	-47,186.15	100.00%
002 DISTRICT - CERTIFIED SALARIES	0.00	5,355.44	5,355.44	0.00	-5,355.44	100.00%
004 DISTRICT - SCHOOL BOARD EXPENS	0.00	10,757.03	10,757.03	0.00	-10,757.03	100.00%
005 DISTRICT - CURRICULUM DIRECTOR	0.00	17,542.85	13,696.37	3,846.48	-17,542.85	100.00%
006 DISTRICT - TECHNOLOGY DIRECTOR	0.00	84,857.00	64,907.69	19,949.31	-84,857.00	100.00%
007 DISTRICT - HEALTH SRVS DIRECTO	0.00	47,053.30	47,053.30	0.00	-47,053.30	100.00%
008 DISTRICT - CONTRACTS & FEES	0.00	217,795.69	211,100.01	6,695.68	-217,795.69	100.00%
009 DISTRICT - BUILDING & GROUNDS	0.00	62,796.12	51,189.12	11,607.00	-62,796.12	100.00%
016 SCHOOL VEHICLE-PERSONAL USE	497.30	0.00	0.00	0.00	497.30	0.00%
017 MIFI-VERIZON	41,862.81	52,435.36	41,870.88	10,564.48	-10,572.55	125.26%
019 ARVEST BANK GRANT	2,416.00	0.00	0.00	0.00	2,416.00	0.00%
020 PRINCIPAL/INTEREST ON BONDS	500,000.00	587,332.69	587,332.69	0.00	-87,332.69	117.47%
021 ANONYMOUS DONOR-CLEET	0.00	9,647.00	9,647.00	0.00	-9,647.00	100.00%
022 IDABEL FFA TRACTOR	0.00	6,584.10	5,739.35	844.75	-6,584.10	100.00%
023 CHOCTAW NATION - TPP	15,000.00	14,524.46	12,024.47	2,499.99	475.54	96.83%
024 WEYCO -SAFETY GRANT	10,000.00	8,200.00	7,125.00	1,075.00	1,800.00	82.00%
025 IDABEL FOUNDATION GRANTS	8,086.65	8,086.65	8,086.65	0.00	0.00	100.00%
038 ADMIN - CERTIFIED SALARIES	0.00	160,098.42	160,098.42	0.00	-160,098.42	100.00%
039 ADMIN - SUPPORT STAFF SALARIES	0.00	132,057.72	132,057.72	0.00	-132,057.72	100.00%
040 ADMIN - PROFESSIONAL DEVELPMEN	0.00	9,841.04	6,665.93	3,175.11	-9,841.04	100.00%
041 ADMIN - OFFICE SUPPLIES	0.00	2,712.99	2,712.99	0.00	-2,712.99	100.00%
042 ADMIN - COPY SUPPLIES	0.00	6,445.08	5,154.84	1,290.24	-6,445.08	100.00%
044 ADMIN - SECURITY & ALARM	0.00	351.00	351.00	0.00	-351.00	100.00%
045 ADMIN - CONTRACT & FEES	0.00	22,609.13	21,006.92	1,602.21	-22,609.13	100.00%
074	0.00	80.00	0.00	80.00	-80.00	100.00%
075 BUS - SALARIES	0.00	97,814.45	97,814.45	0.00	-97,814.45	100.00%
076 BUS - OFFICE SUPPLIES	0.00	775.39	775.39	0.00	-775.39	100.00%
077 BUS - COPY SUPPLIES	0.00	201.63	104.79	96.84	-201.63	100.00%
078 BUS - MAINTENANCE	0.00	134,957.61	114,847.09	20,110.52	-134,957.61	100.00%
079 BUS - TRANSPORTATION	0.00	97,900.09	90,026.89	7,873.20	-97,900.09	100.00%
080 BUS - ROUTE TRANSPORTATION	80,245.00	139,588.07	136,549.08	3,038.99	-59,343.07	173.95%
081 BUS - GROUNDS	0.00	47,652.77	46,758.01	894.76	-47,652.77	100.00%
082 BUS - UTILITIES	0.00	8,231.85	5,476.69	2,755.16	-8,231.85	100.00%
103 CNP - COPY SUPPLIES	0.00	4,421.30	3,781.23	640.07	-4,421.30	100.00%
110 CHILD NUTRITION	0.00	1,198,259.50	1,134,893.85	63,365.65	-1,198,259.50	100.00%
114 SE - SUPPORT STAFF SALARIES	0.00	1,407.29	1,407.29	0.00	-1,407.29	100.00%
117 SE - OFFICE SUPPLIES	0.00	234.00	234.00	0.00	-234.00	100.00%
118 SE - OFFICE SUPPLIES - SP ED	0.00	158.58	158.58	0.00	-158.58	100.00%
119 SE - COPY SUPPLIES	0.00	788.31	601.42	186.89	-788.31	100.00%
121 SE - BUILDING & GROUNDS	3,895.40	5,143.64	5,043.64	100.00	-1,248.24	132.04%

Budget Analysis

Options: Year: 2018-2019, Date Range: 7/1/2018 - 6/30/2019, Print Detail: False

Classification	Appropriation	Encumbered	Paid	Encumbered Balance	Unencumbered Balance	% Enc Budget
2018-2019						
132 SE-MARTHA A JOHNSON TRUST	24,000.00	0.00	0.00	0.00	24,000.00	0.00%
140 EVENSTART CAREER TECH-MOU	0.00	3,532.25	3,532.25	0.00	-3,532.25	100.00%
151 PS - PROFESSIONAL DEVELOPMENT	0.00	550.13	465.13	85.00	-550.13	100.00%
152 PS - OFFICE SUPPLIES	0.00	4,971.92	4,561.92	410.00	-4,971.92	100.00%
153 PS - COPY SUPPLIES	0.00	6,430.43	4,546.55	1,883.88	-6,430.43	100.00%
154 PS - BUILDING & GROUNDS	0.00	30,203.43	30,203.43	0.00	-30,203.43	100.00%
155 PS - SECURITY & ALARM	0.00	430.00	430.00	0.00	-430.00	100.00%
156 PS - CONTRACTS & FEES	0.00	3,265.50	3,265.50	0.00	-3,265.50	100.00%
157 PS - UTILITIES	0.00	23,112.19	20,891.15	2,221.04	-23,112.19	100.00%
161 PS - INSTRUCTIONAL SALARIES	0.00	3,534.14	3,534.14	0.00	-3,534.14	100.00%
162 PS - INSTR. SUPPORT STAFF SALA	0.00	146.30	146.30	0.00	-146.30	100.00%
163 PS - INSTRUCTIONAL EXPENSES	0.00	3,121.34	3,121.34	0.00	-3,121.34	100.00%
170 EZ MART GRANT-RAMSEY	0.00	326.80	326.80	0.00	-326.80	100.00%
188 CENT - PROFESSIONAL DEVELOPMEN	0.00	706.74	706.74	0.00	-706.74	100.00%
189 CENT - OFFICE SUPPLIES	0.00	2,037.75	2,037.75	0.00	-2,037.75	100.00%
190 CENT - COPY SUPPLIES	0.00	10,584.06	5,452.89	5,131.17	-10,584.06	100.00%
191 CENT - BUILDING & GROUNDS	47,482.90	142,454.90	41,775.90	100,679.00	-94,972.00	300.01%
193 CENT - CONTRACTS & FEES	0.00	3,265.50	3,265.50	0.00	-3,265.50	100.00%
194 CENT - UTILITIES	0.00	40,998.80	30,545.37	10,453.43	-40,998.80	100.00%
196 CENT - LIBRARY REPAIRS & SUPPL	0.00	12,977.99	12,977.99	0.00	-12,977.99	100.00%
198 CENT - INSTRUCTIONAL SALARIES	0.00	3,652.28	3,652.28	0.00	-3,652.28	100.00%
200 CENT - INSTRUCTIONAL EXPENSES	0.00	600.00	600.00	0.00	-600.00	100.00%
225 MS - PROFESSIONAL DEVELOPOMENT	0.00	6,241.49	5,780.49	461.00	-6,241.49	100.00%
226 MS - OFFICE SUPPLIES	0.00	2,360.69	2,360.69	0.00	-2,360.69	100.00%
227 MS - COPY SUPPLIES	0.00	7,665.01	5,826.45	1,838.56	-7,665.01	100.00%
228 MS - BUILDING & GROUNDS	91,138.95	309,006.78	298,152.88	10,853.90	-217,867.83	339.05%
230 MS - CONTRACTS AND FEES	0.00	3,315.50	3,315.50	0.00	-3,315.50	100.00%
237 MS - INSTRUCTIONAL EXPENSE	0.00	3,833.06	3,833.06	0.00	-3,833.06	100.00%
241 MS - UTILITIES	0.00	72,273.20	50,056.07	22,217.13	-72,273.20	100.00%
243 MS -LIBRARY REPAIRS & SUPPLIES	0.00	76.89	76.89	0.00	-76.89	100.00%
245 MS - INSTRUCTIONAL SALARIES	0.00	6,401.14	6,401.14	0.00	-6,401.14	100.00%
246 MS - VOCAL MUSIC	0.00	3,776.36	3,035.85	740.51	-3,776.36	100.00%
247 MS - ATHLETICS	0.00	2,087.10	2,087.10	0.00	-2,087.10	100.00%
248 MS - ACTIVITY BUS DRIVERS	0.00	876.21	876.21	0.00	-876.21	100.00%
262 HS - PROFESSIONAL DEVELOPMENT	0.00	2,258.80	1,961.80	297.00	-2,258.80	100.00%
263 HS - OFFICE SUPPLIES	0.00	3,661.39	3,661.39	0.00	-3,661.39	100.00%
264 HS - COPY SUPPLIES	0.00	11,420.86	11,029.86	391.00	-11,420.86	100.00%
265 HS - BUILDING & GROUNDS	77,958.20	213,072.23	127,725.45	85,346.78	-135,114.03	273.32%
267 HS - CONTRACTS & FEES	0.00	3,265.50	3,265.50	0.00	-3,265.50	100.00%
268 HS - UTILITIES	0.00	178,632.09	106,155.03	72,477.06	-178,632.09	100.00%
270 HS - LIBRARY REPAIRS & SUPPLIE	0.00	1,112.04	1,112.04	0.00	-1,112.04	100.00%

Budget Analysis

Options: Year: 2018-2019, Date Range: 7/1/2018 - 6/30/2019, Print Detail: False

Classification	Appropriation	Encumbered	Paid	Encumbered Balance	Unencumbered Balance	% Enc Budget
2018-2019						
271 HS - LIBRARY ACCREDITATION EXP	0.00	228.19	228.19	0.00	-228.19	100.00%
272 HS - INSTRUCTIONAL SALARIES	0.00	22,115.77	22,115.77	0.00	-22,115.77	100.00%
274 HS - INSTRUCTIONAL EXPENSES	0.00	4,931.47	4,535.47	396.00	-4,931.47	100.00%
277 HS - FFA	0.00	577.56	577.56	0.00	-577.56	100.00%
281 HS - BAND	0.00	15,130.94	14,980.94	150.00	-15,130.94	100.00%
282 HS - VOCAL MUSIC	150.00	22,375.02	22,375.02	0.00	-22,225.02	14,916.68%
283 HS - ACADEMIC TEAM	0.00	1,155.78	1,155.78	0.00	-1,155.78	100.00%
284 HS - ATHLETICS	0.00	86,278.16	76,701.62	9,576.54	-86,278.16	100.00%
317 DRIVER ED	3,272.50	3,867.48	3,867.48	0.00	-594.98	118.18%
319 ADULT ED MATCHING	18,671.26	18,353.02	14,513.89	3,839.13	318.24	98.30%
331 FLEX BENEFITS / CERT	10,874.76	11,362.73	11,362.73	0.00	-487.97	104.49%
332 FLEX BENEFITS / NON CERT	72,840.96	70,564.68	67,909.02	2,655.66	2,276.28	96.88%
333 STATE TEXTBOOKS	58,455.90	58,924.61	58,924.61	0.00	-468.71	100.80%
334 CER MED PD BY STATE	621,075.60	654,390.00	649,630.80	4,759.20	-33,314.40	105.36%
335 NC MED PD BY STATE	328,384.80	349,206.30	346,231.80	2,974.50	-20,821.50	106.34%
367 READING SUFFICIENCY	10,188.75	11,993.50	11,993.50	0.00	-1,804.75	117.71%
385 CHILD NUTR PROGRAM	7,903.99	0.00	0.00	0.00	7,903.99	0.00%
388 ALTERNATIVE ED GRANT	48,592.80	49,368.71	49,368.71	0.00	-775.91	101.60%
411 COMPR HS PROG	21,440.00	25,068.01	25,068.01	0.00	-3,628.01	116.92%
412 VOCATIONAL PROGRAMS	36,499.00	37,196.74	27,551.95	9,644.79	-697.74	101.91%
421 CARL PERKINS	27,469.98	27,400.60	27,400.60	0.00	69.38	99.75%
511 BASIC PROG, CY	589,121.96	547,796.63	547,796.63	0.00	41,325.33	92.99%
515 SCHOOL SUPPORT	5,003.15	3,630.38	3,630.38	0.00	1,372.77	72.56%
518 TITLE I PART D-NEGLECTED	10,568.79	10,531.81	10,531.81	0.00	36.98	99.65%
541 TITLE II PART A	102,725.99	88,925.78	88,415.78	510.00	13,800.21	86.57%
552 TITLE IV, PART A, STUDENT SUPPORT, FORMULA GRANT	19,663.55	0.00	0.00	0.00	19,663.55	0.00%
553 LEARNING CENTERS	180,285.60	142,613.80	127,193.43	15,420.37	37,671.80	79.10%
554 21st CENTURY-SPECIAL PROJECTS	80,819.00	57,936.04	55,195.44	2,740.60	22,882.96	71.69%
561 INDIAN ED CURRENT YR	74,048.00	74,048.00	74,048.00	0.00	0.00	100.00%
563 J O'MALLEY CURR YR	20,540.00	20,263.11	19,833.80	429.31	276.89	98.65%
587 RURAL AND LOW INCOME	23,390.87	15,724.07	15,724.07	0.00	7,666.80	67.22%
591 TITLE VII-IMPACT AID	3,067.56	478.54	478.54	0.00	2,589.02	15.60%
592 TITLE VII-IMPACT AID-DISABLED	119.63	119.63	119.63	0.00	0.00	100.00%
613 SPEC ED STAFF DEVELOPMENT	472.75	0.00	0.00	0.00	472.75	0.00%
615 ENGAGE/DEVELOP MONITOR MINI GRANT	3,551.22	1,731.96	1,731.96	0.00	1,819.26	48.77%
621 FLOW THRU CURRENT YR	286,737.53	252,971.74	244,905.52	8,066.22	33,765.79	88.22%
641 PRESCHOOL CURRENT YR	21,486.87	18,815.31	18,815.31	0.00	2,671.56	87.57%
731 ADULT ED CURRENT YR	131,357.74	89,874.13	83,940.09	5,934.04	41,483.61	68.42%
732 ENGLISH LITERACY	28,000.00	0.00	0.00	0.00	28,000.00	0.00%
763 LUNCHES	677,292.50	0.00	0.00	0.00	677,292.50	0.00%
764 BREAKFASTA	371,499.72	8,600.00	4,000.00	4,600.00	362,899.72	2.31%

IDABEL PUBLIC SCHOOLS

Budget Analysis

Options: Year: 2018-2019, Date Range: 7/1/2018 - 6/30/2019, Print Detail: False

Classification	Appropriation	Encumbered	Paid	Encumbered Balance	Unencumbered Balance	% Enc Budget
2018-2019						
766 SUMMER FOOD SERVICE	70,403.05	0.00	0.00	0.00	70,403.05	0.00%
771 USDA GRANT- FFA GREENHOUSE	50,000.00	0.00	0.00	0.00	50,000.00	0.00%
777 READING LITERACY GRANT (ILG)	434,266.00	317,017.04	296,680.72	20,336.32	117,248.96	73.00%
802 ANNUAL - HS	0.00	3,739.44	3,739.44	0.00	-3,739.44	100.00%
803 IDABEL ALUMNI ASSOCIATION-HS	0.00	6,237.26	6,237.26	0.00	-6,237.26	100.00%
805 LEO CLUB - HS	0.00	24.73	24.73	0.00	-24.73	100.00%
806 BASEBALL FIELD PRO-HS	0.00	6,000.00	6,000.00	0.00	-6,000.00	100.00%
807 DISTRICT TECH USE FEE- HS	0.00	3,552.73	3,552.73	0.00	-3,552.73	100.00%
808 SPECIAL OLYMPICS- HS	0.00	14,029.65	8,449.65	5,580.00	-14,029.65	100.00%
809 BAND UNIFORMS - HIGH SCHOOL	0.00	19,875.39	19,875.39	0.00	-19,875.39	100.00%
810 ATHLETICS - HS	0.00	75,245.68	72,402.56	2,843.12	-75,245.68	100.00%
812 BAND - HS	0.00	57,085.13	57,085.13	0.00	-57,085.13	100.00%
818 CHEERLEADERS - HS	0.00	15,856.06	15,729.06	127.00	-15,856.06	100.00%
820 DANCE TEAM - HS	0.00	6,026.04	6,026.04	0.00	-6,026.04	100.00%
822 FACULTY CONCESSIONS - HS	0.00	448.08	248.08	200.00	-448.08	100.00%
830 FFA - HIGH SCHOOL	0.00	30,555.83	30,401.83	154.00	-30,555.83	100.00%
832 FHA (FCCLA) - HIGH SCHOOL	0.00	1,949.00	1,949.00	0.00	-1,949.00	100.00%
833 GUIDANCE - HIGH SCHOOL	0.00	85.00	85.00	0.00	-85.00	100.00%
837 KEY CLUB - HIGH SCHOOL	0.00	1,537.68	1,537.68	0.00	-1,537.68	100.00%
839 IHS ACADEMIC TEAM-HIGH SCHOOL	0.00	1,007.00	1,007.00	0.00	-1,007.00	100.00%
840 LIBRARY - HIGH SCHOOL	0.00	1,854.00	1,854.00	0.00	-1,854.00	100.00%
842 NATIVE AM CLUB - HIGH SCHOOL	0.00	729.89	729.89	0.00	-729.89	100.00%
846 NAT'L HONOR SOC - HIGH SCHOOL	0.00	1,136.00	1,136.00	0.00	-1,136.00	100.00%
851 MISS I.H.S. - HIGH SCHOOL	0.00	2,643.36	2,643.36	0.00	-2,643.36	100.00%
852 POPTIME - HIGH SCHOOL	0.00	14,270.25	13,349.99	920.26	-14,270.25	100.00%
854 SENIORS 2021- HIGH SCHOOL	0.00	53.14	53.14	0.00	-53.14	100.00%
856 SENIORS 2019- HIGH SCHOOL	0.00	2,245.17	2,245.17	0.00	-2,245.17	100.00%
858 SENIORS 2022 - HIGH SCHOOL	0.00	76.84	76.84	0.00	-76.84	100.00%
859 SPANISH CLUB - HIGH SCHOOL	0.00	543.10	543.10	0.00	-543.10	100.00%
861 SENIORS 2020 - HIGH SCHOOL	0.00	1,211.84	1,211.84	0.00	-1,211.84	100.00%
862 STUDENT INCENTIVE-HIGH SCHOOL	0.00	5,583.39	5,448.39	135.00	-5,583.39	100.00%
866 STUDENT COUNCIL-HIGH SCHOOL	0.00	1,648.11	1,648.11	0.00	-1,648.11	100.00%
867 WARRIOR ACADEMY-HIGH SCH	0.00	139.36	139.36	0.00	-139.36	100.00%
870 WARRIOR CLUB - HIGH SCHOOL	0.00	34,598.70	33,870.70	728.00	-34,598.70	100.00%
901 DISTRICT TECH USE FEE- MS	0.00	3,000.00	3,000.00	0.00	-3,000.00	100.00%
902 BAND - MIDDLE SCHOOL	0.00	15,845.68	15,845.68	0.00	-15,845.68	100.00%
903 CHEERLEADERS-MIDDLE SCHOOL	0.00	9,634.05	9,634.05	0.00	-9,634.05	100.00%
904 CHORAL MUSIC - MIDDLE SCHOOL	0.00	2,878.15	2,878.15	0.00	-2,878.15	100.00%
905 COMP SPORTS - MIDDLE SCHOOL	0.00	13,876.11	13,876.11	0.00	-13,876.11	100.00%
907 HONOR SOCIETY-MIDDLE SCHOOL	0.00	2,038.81	2,038.81	0.00	-2,038.81	100.00%
908 LEGO - MIDDLE SCHOOL	0.00	1,507.54	1,507.54	0.00	-1,507.54	100.00%
909 LIBRARY MISC - MIDDLE SCHOOL	0.00	907.84	907.84	0.00	-907.84	100.00%

Budget Analysis

Options: Year: 2018-2019, Date Range: 7/1/2018 - 6/30/2019, Print Detail: False

Classification	Appropriation	Encumbered	Paid	Encumbered Balance	Unencumbered Balance	% Enc Budget
2018-2019						
910 TIME TREKKERS - MIDDLE SCH	0.00	9,772.31	8,717.31	1,055.00	-9,772.31	100.00%
911 COMP ACADEMICS-MIDDLE SCHOOL	0.00	83.75	83.75	0.00	-83.75	100.00%
916 STUDENT CO - MIDDLE SCHOOL	0.00	787.00	787.00	0.00	-787.00	100.00%
921 MIDDLE SCHOOL SPECIAL - MS	0.00	8,458.56	8,458.56	0.00	-8,458.56	100.00%
922 HISPANIC CLUB - MIDDLE SCHOOL	0.00	828.44	828.44	0.00	-828.44	100.00%
927 YEARBOOK - MIDDLE SCHOOL	0.00	100.00	0.00	100.00	-100.00	100.00%
930 GENERAL STUDENT - CENTRAL	0.00	19,961.80	18,864.56	1,097.24	-19,961.80	100.00%
931 BOOK FAIR - CENTRAL	0.00	5,588.43	3,488.43	2,100.00	-5,588.43	100.00%
932 COKE - CENTRAL	0.00	2,329.66	2,224.66	105.00	-2,329.66	100.00%
933 CHARACTER COUNTS - CENTRAL	0.00	510.72	510.72	0.00	-510.72	100.00%
934 BROADWAY KIDS - CENTRAL	0.00	1,352.92	1,352.92	0.00	-1,352.92	100.00%
937 STEM - CENTRAL	0.00	289.29	289.29	0.00	-289.29	100.00%
938 PTO - CENTRAL	0.00	325.00	325.00	0.00	-325.00	100.00%
941 PSE LIBRARY - PRIMARY SOUTH	0.00	3,476.62	3,476.62	0.00	-3,476.62	100.00%
942 COKE - PRIMARY SOUTH	0.00	2,531.43	2,531.43	0.00	-2,531.43	100.00%
952 STUDENT SERV-PRIMARY SOUTH	0.00	929.95	929.95	0.00	-929.95	100.00%
953 SWEET SOUNDS-PRIMARY SOUTH	0.00	748.97	748.97	0.00	-748.97	100.00%
962 PRE K & K - PRIMARY SOUTH	0.00	14,832.64	14,832.64	0.00	-14,832.64	100.00%
980 GENERAL STUDENT - EVENSTART	0.00	1,258.16	1,258.16	0.00	-1,258.16	100.00%
983 GENERAL - ADMINISTRATION	0.00	14,047.23	14,047.23	0.00	-14,047.23	100.00%
Total 2018-2019	\$15,650,220.55	\$14,795,190.57	\$14,152,148.67	\$643,041.90	\$855,029.98	94.54 %
Report Total	\$15,650,220.55	\$14,795,190.57	\$14,152,148.67	\$643,041.90	\$855,029.98	94.54 %

Purchase Order Register

Options: Year: 2018-2019, Fund: GENERAL FUND FOR OP, Date Range: 7/1/2018 - 6/30/2019, PO Range: 907 - 1000

PO No	Date	Vendor No	Vendor	Description	Amount
907	05/15/2019	2487	SHARROCK OIL, INC	DISTRICT-FUEL	6,000.00
908	05/15/2019	1473	GAMMON, CHRIS	21ST CENTURY-TRAVEL	50.00
909	05/15/2019	2119	PROCELL, TRUDY	21ST CENTURY-TRAVEL	50.00
910	05/15/2019	3563	MELISSA GAMMON	21ST CENTURY-TRAVEL	50.00
911	05/15/2019	360	COPELAND, NANCY	LIT GRANT-TRAVEL	50.00
912	05/15/2019	1829	BASTIBLE, TERRI	LIT GRANT-TRAVEL	50.00
913	05/15/2019	2093	BRYANT, CINDY	LIT GRANT-TRAVEL	50.00
914	05/15/2019	2049	BROWN, DEBBIE	LIT GRANT-TRAVEL	50.00
915	05/15/2019	3564	LADONNA EBERT	LIT GRANT-TRAVEL	50.00
916	05/15/2019	3565	ASHLEY HARRIS	LIT GRANT-TRAVEL	50.00
917	05/15/2019	131	HOLIDAY INN - MIDWEST CITY	HS-TRAVEL	200.00
918	05/15/2019	3489	FARELY, BETHANY	HS-TRAVEL	97.00
919	05/20/2019	519	SOUTHEAST FEED	HS-ATHLETICS	2,360.00
920	05/22/2019	384	IDABEL NATIONAL BANK	AG-TRAILER PAYMENT	6,000.00
Non-Payroll Total:					\$15,107.00
Payroll Total:					\$0.00
Report Total:					\$15,107.00

Purchase Order Register

Options: Year: 2019-2020, Fund: GENERAL FUND FOR OP, Date Range: 7/1/2019 - 6/30/2020, PO Range: 1 - 100

PO No	Date	Vendor No	Vendor	Description	Amount
1	07/01/2019	140	AMERICAN ELECTRIC POWER	DISTRICT-ELECTRIC	231,000.00
2	07/01/2019	149	AT&T	DISTRICT-PHONES AND INTERNET	13,300.00
3	07/01/2019	142	IDABEL PUBLIC WORKS	DISTRICT-WATER	29,400.00
4	07/01/2019	1936	CANON FINANCIAL SERVICES, INC.	DISTRICT-COPIER CONTRACT	14,500.00
5	07/01/2019	262	MILLER OFFICE SUPPLY	DISTRICT-COPIER CONTRACT	28,050.00
6	07/01/2019	141	OKLAHOMA NATURAL GAS	DISTRICT-GAS	24,800.00
7	07/01/2019	1259	OKLAHOMA ENERGY SOURCE LLC	DISTRICT-NATURAL GAS	16,000.00
8	07/01/2019	3003	VERIZON COMMUNICATION	DISTRICT-MIFI AND CELL PHONES	48,500.00
9	07/01/2019	342	UMB BANK	DISTRICT-ADMIN FEES	600.00
Non-Payroll Total:					\$406,150.00
Payroll Total:					\$0.00
Report Total:					\$406,150.00

Purchase Order Register

Options: Year: 2019-2020, Fund: CHILD NUTRITION FUND, Date Range: 7/1/2019 - 6/30/2020, PO Range: 1 - 100

PO No	Date	Vendor No	Vendor	Description	Amount
1	07/01/2019	140	AMERICAN ELECTRIC POWER	CNP-ELECTRIC	26,000.00
2	07/01/2019	141	OKLAHOMA NATURAL GAS	CNP-GAS	2,600.00
3	07/01/2019	142	IDABEL PUBLIC WORKS	CNP-WATER	2,500.00
Non-Payroll Total:					\$31,100.00
Payroll Total:					\$0.00
Report Total:					\$31,100.00

Purchase Order Register

Options: Year: 2019-2020, Fund: SINKING FUND, Date Range: 7/1/2019 - 6/30/2020, PO Range: 1 - 100

PO No	Date	Vendor No	Vendor	Description	Amount
1	07/01/2019	342	UMB BANK	BOND 2014	271,755.00
2	07/01/2019	342	UMB BANK	BOND-PRINCIPAL PAYMENT	214,500.00
Non-Payroll Total:					\$486,255.00
Payroll Total:					\$0.00
Report Total:					\$486,255.00

Purchase Order Register

Options: Year: 2018-2019, Fund: CHILD NUTRITION FUND, Date Range: 7/1/2018 - 6/30/2019, PO Range: 68 - 68

PO No	Date	Vendor No	Vendor	Description	Amount
68	06/06/2019	10	PERFORMANCE FD GR LR	CNP-FOOD	5,000.00
Non-Payroll Total:					\$5,000.00
Payroll Total:					\$0.00
Report Total:					\$5,000.00

IDABEL PUBLIC SCHOOLS

Revenue/Expenditure Summary

Options: Fund: 60, Date Range: 5/1/2019 - 5/31/2019

	Begin Balance	Receipts	Adjusting Entries	Payments	Cash End Balance	Unpaid POs	End Balance
Unit - 050 DISTRICT WIDE							
983 GENERAL - ADMINISTRATION	\$5,933.84	\$247.16	\$0.00	\$1,662.71	\$4,518.29	\$1,167.05	\$3,351.24
985 DRIVERS ED - ADMINISTRATION	\$3,925.00	\$0.00	\$0.00	\$0.00	\$3,925.00	\$0.00	\$3,925.00
986 REFUND ACCT - ALL SCHOOLS	\$801.00	\$105.00	\$0.00	\$0.00	\$906.00	\$0.00	\$906.00
987 CAFETERIA - REFUND ACCT	\$8,034.80	\$1,831.86	\$0.00	\$0.00	\$9,866.66	\$0.00	\$9,866.66
Total Unit - 050 DISTRICT WIDE	\$18,694.64	\$2,184.02	\$0.00	\$1,662.71	\$19,215.95	\$1,167.05	\$18,048.90
Unit - 105 EVENSTART-EARLY CHILDHOOD							
980 GENERAL STUDENT - EVENSTART	\$766.87	\$73.52	\$0.00	\$147.00	\$693.39	\$159.65	\$533.74
Total Unit - 105 EVENSTART-EARLY CHILDHOOD	\$766.87	\$73.52	\$0.00	\$147.00	\$693.39	\$159.65	\$533.74
Unit - 110 CENTRAL ELEMENTARY							
930 GENERAL STUDENT - CENTRAL	\$35,029.83	\$5,995.00	\$0.00	\$2,240.60	\$38,784.23	\$3,537.65	\$35,246.58
931 BOOK FAIR - CENTRAL	\$2,221.81	\$331.30	\$0.00	\$0.00	\$2,553.11	\$2,100.00	\$453.11
932 COKE - CENTRAL	\$4,801.05	\$0.00	\$0.00	\$439.69	\$4,361.36	\$538.00	\$3,823.36
933 CHARACTER COUNTS - CENTRAL	\$456.65	\$0.00	\$0.00	\$0.00	\$456.65	\$0.00	\$456.65
934 BROADWAY KIDS - CENTRAL	\$1,562.39	\$0.00	\$0.00	\$0.00	\$1,562.39	\$0.00	\$1,562.39
936 5TH GRADE - CENTRAL	\$245.11	\$0.00	\$0.00	\$0.00	\$245.11	\$0.00	\$245.11
937 STEM - CENTRAL	\$403.58	\$0.00	\$0.00	\$99.30	\$304.28	\$0.00	\$304.28
938 PTO - CENTRAL	\$5,762.98	\$888.63	\$0.00	\$0.00	\$6,651.61	\$0.00	\$6,651.61
Total Unit - 110 CENTRAL ELEMENTARY	\$50,483.40	\$7,214.93	\$0.00	\$2,779.59	\$54,918.74	\$6,175.65	\$48,743.09
Unit - 120 PRIMARY SOUTH							
941 PSE LIBRARY - PRIMARY SOUTH	\$922.47	\$32.71	\$0.00	\$0.00	\$955.18	\$0.00	\$955.18
942 COKE - PRIMARY SOUTH	\$2,025.24	\$459.75	\$0.00	\$314.55	\$2,170.44	\$410.00	\$1,760.44
947 PTO - PRIMARY SOUTH	\$926.55	\$3.50	\$0.00	\$0.00	\$930.05	\$0.00	\$930.05
952 STUDENT SERV-PRIMARY SOUTH	\$616.42	\$0.00	\$0.00	\$0.00	\$616.42	\$0.00	\$616.42
953 SWEET SOUNDS-PRIMARY SOUTH	\$614.98	\$0.00	\$0.00	\$0.00	\$614.98	\$0.00	\$614.98
962 PRE K & K - PRIMARY SOUTH	\$7,068.85	\$201.75	\$0.00	\$1,082.12	\$6,188.48	\$74.62	\$6,113.86
Total Unit - 120 PRIMARY SOUTH	\$12,174.51	\$697.71	\$0.00	\$1,396.67	\$11,475.55	\$484.62	\$10,990.93
Unit - 505 IDABEL MIDDLE SCHOOL							
900 ART - MIDDLE SCHOOL	\$201.76	\$0.00	\$0.00	\$0.00	\$201.76	\$0.00	\$201.76
901 DISTRICT TECH USE FEE- MS	\$5,967.00	\$1,014.00	\$0.00	\$197.00	\$6,784.00	\$0.00	\$6,784.00
902 BAND - MIDDLE SCHOOL	\$1,534.55	\$1,274.36	\$0.00	\$2,697.29	\$111.62	\$0.00	\$111.62
903 CHEERLEADERS-MIDDLE SCHOOL	\$5,257.80	\$1,695.00	\$0.00	\$2,730.00	\$4,222.80	\$0.00	\$4,222.80
904 CHORAL MUSIC - MIDDLE SCHOOL	\$3,717.64	\$259.26	\$0.00	\$437.55	\$3,539.35	\$100.00	\$3,439.35
905 COMP SPORTS - MIDDLE SCHOOL	\$9,883.35	\$0.00	\$0.00	\$65.30	\$9,818.05	\$0.00	\$9,818.05
906 FACULTY ACCOUNT-MIDDLE SCH	\$51.72	\$0.00	\$0.00	\$0.00	\$51.72	\$0.00	\$51.72
907 HONOR SOCIETY-MIDDLE SCHOOL	\$5,630.10	\$0.00	\$0.00	\$495.00	\$5,135.10	\$818.55	\$4,316.55
908 LEGO - MIDDLE SCHOOL	\$2,289.10	\$1,306.42	\$0.00	\$0.00	\$3,595.52	\$0.00	\$3,595.52
909 LIBRARY MISC - MIDDLE SCHOOL	\$569.23	\$12.00	\$0.00	\$340.48	\$240.75	\$0.00	\$240.75
910 TIME TREKKERS - MIDDLE SCH	\$8,580.38	\$107.00	\$0.00	\$1,390.32	\$7,297.06	\$4,972.83	\$2,324.23
911 COMP ACADEMICS-MIDDLE SCHOOL	\$109.89	\$0.00	\$0.00	\$28.69	\$81.20	\$0.00	\$81.20
913 SCIENCE DEPT - MIDDLE SCHOOL	\$1,692.29	\$0.00	\$0.00	\$0.00	\$1,692.29	\$0.00	\$1,692.29
915 SPORT JACKET - MIDDLE SCHOOL	\$35.29	\$0.00	\$0.00	\$0.00	\$35.29	\$0.00	\$35.29
916 STUDENT CO - MIDDLE SCHOOL	\$2,612.32	\$14.00	\$0.00	\$232.01	\$2,394.31	\$0.00	\$2,394.31
921 MIDDLE SCHOOL SPECIAL - MS	\$5,792.09	\$227.25	\$0.00	\$342.79	\$5,676.55	\$739.58	\$4,936.97
922 HISPANIC CLUB - MIDDLE SCHOOL	\$1,045.16	\$0.00	\$0.00	\$828.44	\$216.72	\$0.00	\$216.72
927 YEARBOOK - MIDDLE SCHOOL	\$118.87	\$20.00	\$0.00	\$0.00	\$138.87	\$100.00	\$38.87
Total Unit - 505 IDABEL MIDDLE SCHOOL	\$55,088.54	\$5,929.29	\$0.00	\$9,784.87	\$51,232.96	\$6,730.96	\$44,502.00
Unit - 710 IDABEL HIGH SCHOOL							
802 ANNUAL - HS	\$6,899.00	\$400.00	\$0.00	\$3,424.50	\$3,874.50	\$76.99	\$3,797.51
803 IDABEL ALUMNI ASSOCIATION-HS	\$10,720.04	\$211.50	\$0.00	\$2,545.00	\$8,386.54	\$0.00	\$8,386.54
804 ART - HS	\$295.44	\$0.00	\$0.00	\$0.00	\$295.44	\$0.00	\$295.44
805 LEO CLUB - HS	\$425.52	\$0.00	\$0.00	\$0.00	\$425.52	\$0.00	\$425.52
806 BASEBALL FIELD PRO-HS	\$750.17	\$0.00	\$0.00	\$0.00	\$750.17	\$0.00	\$750.17
807 DISTRICT TECH USE FEE- HS	\$7,430.27	\$0.00	\$0.00	\$0.00	\$7,430.27	\$0.00	\$7,430.27
808 SPECIAL OLYMPICS- HS	\$16,257.15	\$0.00	\$0.00	\$481.83	\$15,775.32	\$5,880.00	\$9,895.32
809 BAND UNIFORMS - HIGH SCHOOL	\$0.34	\$0.00	\$0.00	\$0.00	\$0.34	\$0.00	\$0.34
810 ATHLETICS - HS	\$14,177.54	\$672.00	\$0.00	\$4,955.54	\$9,894.00	\$1,449.92	\$8,444.08

Revenue/Expenditure Summary

Options: Fund: 60, Date Range: 5/1/2019 - 5/31/2019

	Begin Balance	Receipts	Adjusting Entries	Payments	Cash End Balance	Unpaid POs	End Balance
Unit - 710 IDABEL HIGH SCHOOL							
811 FOOTBALL LOCKERS - HS	\$541.83	\$0.00	\$0.00	\$0.00	\$541.83	\$0.00	\$541.83
812 BAND - HS	\$5,249.39	\$1,099.00	\$0.00	\$3,284.99	\$3,063.40	\$0.00	\$3,063.40
813 TRACK SURFACE - HS	\$8,170.00	\$0.00	\$0.00	\$0.00	\$8,170.00	\$0.00	\$8,170.00
814 CALCULUS - HS	\$63.00	\$0.00	\$0.00	\$0.00	\$63.00	\$0.00	\$63.00
815 ATHLETIC TRAINING-NFL GRANT - HS	\$20,000.00	\$0.00	\$0.00	\$0.00	\$20,000.00	\$0.00	\$20,000.00
818 CHEERLEADERS - HS	\$767.64	\$850.00	\$0.00	\$0.00	\$1,617.64	\$127.00	\$1,490.64
820 DANCE TEAM - HS	\$3,193.41	\$400.00	\$0.00	\$2,487.44	\$1,105.97	\$0.00	\$1,105.97
822 FACULTY CONCESSIONS - HS	\$609.15	\$0.00	\$0.00	\$190.93	\$418.22	\$200.00	\$218.22
826 FBLA (BPA) - HS	\$4,617.90	\$0.00	\$0.00	\$0.00	\$4,617.90	\$30.00	\$4,587.90
828 FCA - HS	\$1,203.65	\$0.00	\$0.00	\$0.00	\$1,203.65	\$0.00	\$1,203.65
830 FFA - HIGH SCHOOL	\$8,229.20	\$418.80	\$0.00	\$1,961.80	\$6,686.20	\$3,930.00	\$2,756.20
832 FHA (FCCLA) - HIGH SCHOOL	\$6,415.13	\$0.00	\$0.00	\$0.00	\$6,415.13	\$838.00	\$5,577.13
833 GUIDANCE - HIGH SCHOOL	\$739.62	\$0.00	\$0.00	\$0.00	\$739.62	\$400.00	\$339.62
837 KEY CLUB - HIGH SCHOOL	\$2,805.84	\$0.00	\$0.00	\$0.00	\$2,805.84	\$0.00	\$2,805.84
839 IHS ACADEMIC TEAM-HIGH SCHOOL	\$1,499.40	\$0.00	\$0.00	\$75.00	\$1,424.40	\$0.00	\$1,424.40
840 LIBRARY - HIGH SCHOOL	\$613.43	\$70.00	\$0.00	\$0.00	\$683.43	\$0.00	\$683.43
842 NATIVE AM CLUB - HIGH SCHOOL	\$1,688.92	\$0.00	\$0.00	\$0.00	\$1,688.92	\$0.00	\$1,688.92
843 JACKETS - HIGH SCHOOL	\$179.00	\$0.00	\$0.00	\$0.00	\$179.00	\$0.00	\$179.00
845 JOURNALISM - HIGH SCHOOL	\$5.16	\$0.00	\$0.00	\$0.00	\$5.16	\$0.00	\$5.16
846 NAT'L HONOR SOC - HIGH SCHOOL	\$692.25	\$0.00	\$0.00	\$385.00	\$307.25	\$0.00	\$307.25
850 SCIENCE DEPT - HIGH SCHOOL	\$43.45	\$0.00	\$0.00	\$0.00	\$43.45	\$0.00	\$43.45
851 MISS I.H.S. - HIGH SCHOOL	\$6,600.73	\$0.00	\$0.00	\$390.50	\$6,210.23	\$204.83	\$6,005.40
852 POPTIME - HIGH SCHOOL	\$4,402.84	\$360.00	\$0.00	\$223.24	\$4,539.60	\$920.26	\$3,619.34
853 ROBOTICS - HIGH SCHOOL	\$168.24	\$0.00	\$0.00	\$0.00	\$168.24	\$0.00	\$168.24
854 SENIORS 2021- HIGH SCHOOL	\$863.14	\$0.00	\$0.00	\$0.00	\$863.14	\$0.00	\$863.14
856 SENIORS 2019- HIGH SCHOOL	\$1,170.45	\$0.00	\$0.00	\$1,111.11	\$59.34	\$0.00	\$59.34
858 SENIORS 2022 - HIGH SCHOOL	\$125.21	\$0.00	\$0.00	\$0.00	\$125.21	\$0.00	\$125.21
859 SPANISH CLUB - HIGH SCHOOL	\$42.79	\$0.00	\$0.00	\$0.00	\$42.79	\$0.00	\$42.79
861 SENIORS 2020 - HIGH SCHOOL	\$2,265.45	\$0.00	\$0.00	\$61.90	\$2,203.55	\$0.00	\$2,203.55
862 STUDENT INCENTIVE-HIGH SCHOOL	\$4,055.54	\$0.00	\$0.00	\$1,624.90	\$2,430.64	\$135.00	\$2,295.64
866 STUDENT COUNCIL-HIGH SCHOOL	\$178.25	\$20.00	\$0.00	\$0.00	\$198.25	\$115.00	\$83.25
867 WARRIOR ACADEMY-HIGH SCH	\$833.42	\$0.00	\$0.00	\$0.00	\$833.42	\$0.00	\$833.42
870 WARRIOR CLUB - HIGH SCHOOL	\$5,324.16	\$0.00	\$0.00	\$3,719.75	\$1,604.41	\$868.00	\$736.41
Total Unit - 710 IDABEL HIGH SCHOOL	\$150,313.06	\$4,501.30	\$0.00	\$26,923.43	\$127,890.93	\$15,175.00	\$112,715.93
Total	\$287,521.02	\$20,600.77	\$0.00	\$42,694.27	\$265,427.52	\$29,892.93	\$235,534.59

NEW ACCOUNT
ACTIVITY FUND APPROVAL
2019-2020 SCHOOL YEAR

NAME OF SCHOOL SITE:

Idabel Public Schools

NAME FOR ACTIVITY ACCOUNT

Literacy

SOURCE OF INCOME:

~~concession~~ sponsors/ads

concession

Kona Ice

car washes

T-shirt sales

Donations

PURPOSE FOR EXPENDITURES:

use for office supplies, food, costumes, Rentals,
supplies for Literacy events, signs, banners

Donations

tshirts

pay Book author - Decorations

Big Books - equipment

travel expenses - meals

printing material, Fundraisers, shows, exhibits

SPONSOR:

Debbie Brown

PRINCIPAL'S SIGNATURE:



DATE:

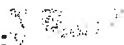
6/4/19

BOARD ACTION:

APPROVED:

DENIED:

SIGNATURE:



IDABEL PUBLIC
SCHOOLS

Dawn Bourne <dawnallen@idabelps.org>

Fwd: Middle School Science Position

2 messages

Laura Bullock <lbullock@idabelps.org> Wed, May 22, 2019 at 1:21 PM
To: Doug Brown <doug.brown@idabelps.org>, Debra McGee
<dmcgee@idabelps.org>, Dawn Allen <dawnallen@idabelps.org>

----- Forwarded message -----

From: **Courtney Fipps** <nofnranch@gmail.com>
Date: Wed, May 22, 2019 at 10:51 AM
Subject: Middle School Science Position
To: Laura Bullock <lbullock@idabelps.org>

Ms. Bullock,

Due to changes in family circumstances, I will be unable to full-fill my duties as **Middle School Science** teacher and must **resign** from my position. I apologize for any inconvenience. I enjoyed working with all of you the short time I did get to spend with you. Please do not hesitate to reach out for resources if needed. We will be moving out of the area, otherwise this would not have been an issue. Hopefully I can make it down to see you guys before we leave. Thank you again for the opportunity.

Sincerely,

Courtney Newman

Doug Brown <doug.brown@idabelps.org> Wed, May 22, 2019 at 1:31 PM
To: Dawn Allen <Dawnallen@idabelps.org>

Please add this to the June Board Agenda.

[Quoted text hidden]

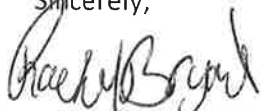
June 3, 2019

Mr. Doug Brown, Dr. Alan Bryant, Mrs. Nancy Copeland, and Idabel School Board,

Please accept my resignation as a paraprofessional at Central Elementary and the special needs bus rider for Idabel Public Schools. My last day will be Friday, June 21, 2019. My plans are to return to school to further my education.

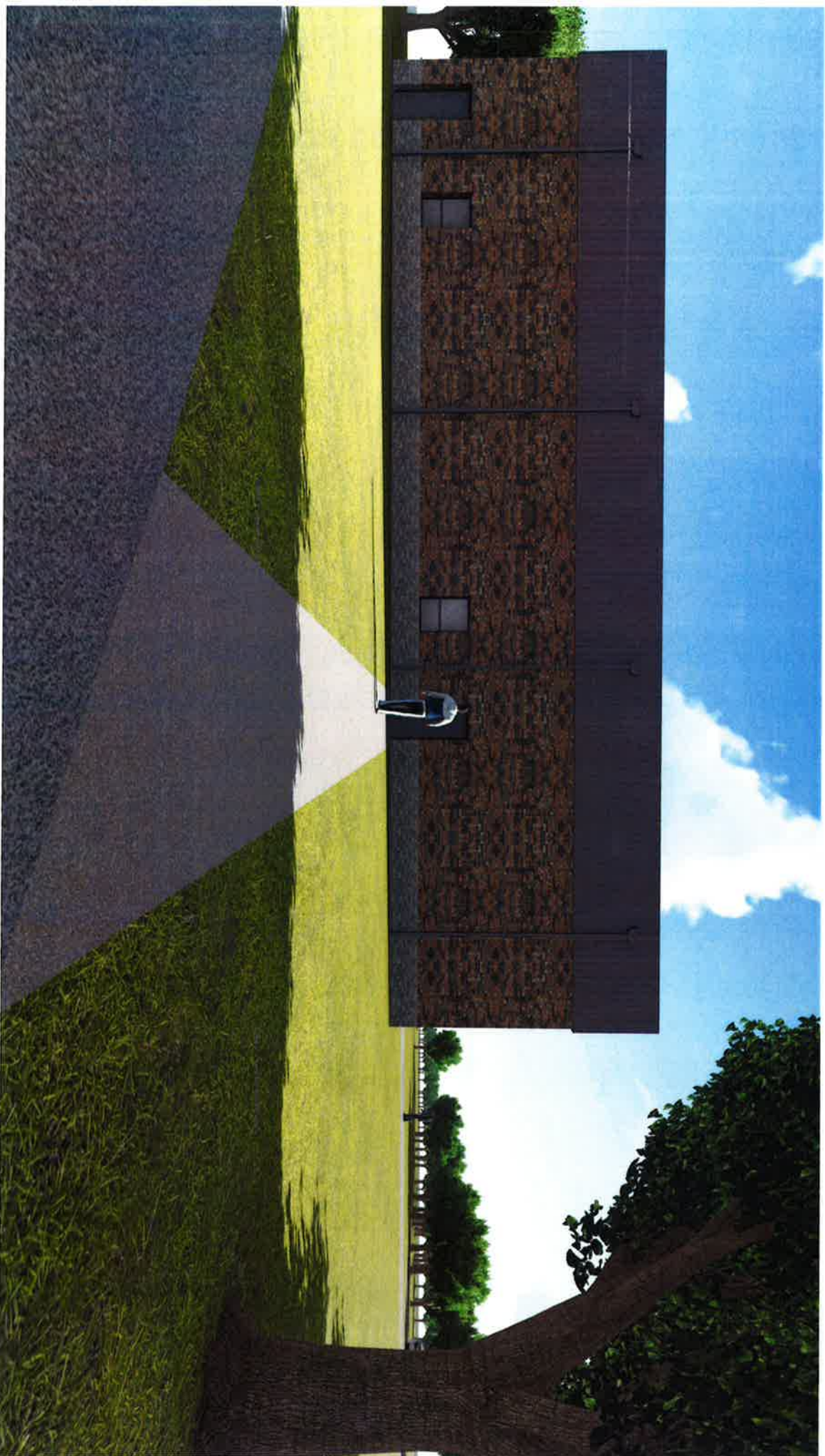
I'm grateful to have had the opportunity to work for Idabel Schools with Mrs. Copeland, teachers, staff, and students at Central Elementary.

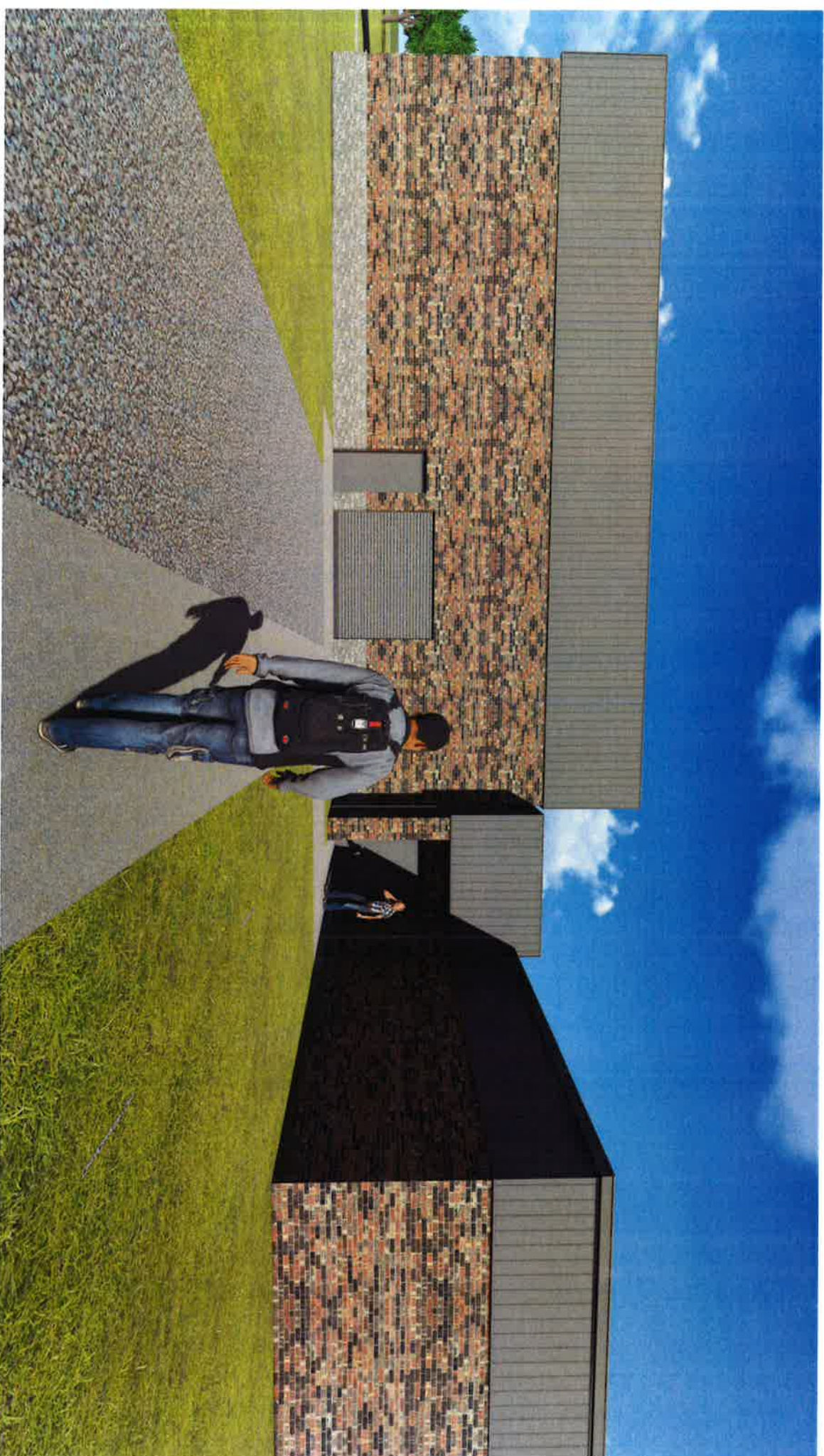
Sincerely,



Rachel Bryant

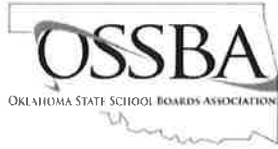












Teacher Pay Raise Guidance and Frequently Asked Questions

OSSBA and CCOSA have received a number of questions from our members regarding the implementation of the teacher pay raise approved by the Legislature. We have prepared the following FAQ to assist with questions.

We are pleased and grateful for this additional investment into public education and believe it's important to honor the legislative agreement and intent that led to this additional investment in both teacher pay and local needs.

What legislation authorizes pay raises?

HB 2765 is the general appropriations bill. SB 1048 is the budget limits bill for the state Education Department.

How much money will school districts receive that can be used for pay raises?

HB 2765 and SB 1048 appropriated \$133.6 million through the state aid formula to school districts for teacher pay raises and local needs. Our estimate is that school districts will receive an increase in state aid over the current school year of approximately \$115 per weighted ADM. This should be more than enough to cover the cost of the raises.

Will the state minimum salary schedule be adjusted to reflect the raise?

No. Neither bill calls for a new state minimum salary schedule. School districts will need to prepare a new local salary schedule to reflect the amount of raises enacted by your district.

Is this a stipend/bonus or a raise?

The law mandates a raise – meaning a permanent increase in the base salary that the employee receives as part of each paycheck. It can **not** be given as a stipend or bonus. *Reminder: This raise is permanent and recurring. State law does not allow for a teacher's salary to be reduced from one year to the next.*

How much of a raise should each teacher receive?

We believe it's important to honor the intent of state leaders that teachers in each district would collectively receive an average raise of \$1,220. SB 1048 specifies the raise must be *in addition to* the step increase in the state minimum salary schedule. That leaves each school district with two options:

- Award each teacher a \$1,220 raise (adjusting each step of the local salary schedule).
- Differentiate the raise, awarding smaller amounts to some and larger amounts to others while still meeting an average \$1,220 raise (adjusting each step of the local salary schedule accordingly). If your district opts to pursue a differentiated approach, it's important to have an open dialogue with teachers about the rationale for the decision.

It does not matter if your district is above the minimum salary schedule. The average raise amount in addition to the step increase should still average \$1,220.

Who should receive the raise?

SB 1048 authorizes the raise for certified personnel as defined in state law, which includes certified employees working full time as a teacher, principal, supervisor, administrator, counselor, librarian, or certified or registered nurse. It does not include the superintendent.

Do district costs like the employer share of retirement and FICA come out of the \$1,220 or is that cost in addition to the \$1,220 raise?

The raise is intended to be applied to the base salary for teachers. All employer costs should be paid above and beyond that amount.

My district receives no state aid through the funding formula. Must my district give the raise and how much?

State leaders expressed a desire that even though "off-the-formula" districts wouldn't receive state aid to cover the cost of the raise, such districts would still honor the intent of the law. We think it would be wise for districts that receive no state aid through the funding formula to award the raise if at all possible.

State leaders mentioned the raise would go into effect Sept. 1. What's the practical effect of that date?

There's no statutory language that creates a special effective date. The pay raise and the rest of the appropriations bill is effective July 1 for the entire 2019-2020 school year.

Are there any reporting requirements?

The law requires school districts to report to the SDE the amount of salary increase each teacher received. We anticipate this reporting requirement will be met through the existing school personnel records reporting process.

Suplus Equipment-Technology Central Elementary May 2019

Description	S/N (if available)	Amount	
Keyboards (various brands)	N/A		23
Mouse (various brands)	N/A		21
Computer speakers (various brands)	NA		5
NEC Projector NP400	8900654EB		1
NEC Projector NP400	8901145FB		1
NEC Projector NP400	8901145FB		1
Tape recorder/player model 1300	N/A		1
Tape recorder/player model 3132	N/A		1
Classroom Responder System	N/A	1 set of 21	
Computer Monitor (various brands)	N/A		10
25' SVGA Cable HDB15	N/A		1
Smartboard Mounting Strip	N/A		1
Dell Optiplex 755	X1827373		1
Dell Optiplex 755	X1827374		1
Dell Optiplex 755	F2VC7G1		1
Dell Latitude E6500	2D0W4L1		1
Dell Optiplex 755	1NKXFG1		1
Dell Optiplex 755	13NS4G1		1
Dell Optiplex 9020	15K0Q22		1
Dell Optiplex 755	2963142		1
Dell Optiplex 755	6QOC7G1		1
Dell Optiplex 755	HCD0HG1		1
CPU Fans	N/A		2
Back up batteries	N/A		2
Dell Printer 2350	7XP6GN1		1
Dell Printer 2350	2HQ6GN1		1
AverMedia Document Camera CP135	62113-12010P		1
Samsung Printer	ZAYSBFFB		1

Original Cost (if available)

N/A

N/A

N/A

\$700.00

\$600.00

\$700.00

N/A

N/A

N/A

N/A

N/A

N/A

\$219.00

\$219.00

\$355.00

\$1,200

\$350.00

\$355.00

\$699.00

\$355.00

\$355.00

\$355.00

N/A

N/A

\$180.00

\$180.00

\$339.99

N/A

Library Weeding Log

Central Elementary School

From: 5/16/2019 To: 5/16/2019

5/16/2019 - Copies Removed: 13

Computer, CPU: Dell Optiplex 9020 (Certified Refurbished); Mt, INTEL CORE (Removed: 1)

Author: Dell, Inc., 2015.

Call Number	Barcode	Price	Acquired	Removed By
Equip Dell	T 66320	\$699.00	8/4/2015	admin201

Was Checked Out to Robbins, Tasha (Faculty: P 2000114) Due 7/2/2019 -- Weeded

Dell Optiplex 755 (Removed: 5)

Author: Spring 2013.

Published: 2013

Call Number	Barcode	Price	Acquired	Removed By
Equip Dell	T 26663	\$355.00	3/27/2013	admin201
Was Checked Out to Oney, Tiffany (Faculty: P 2000151) Due 7/2/2019 -- Weeded				
Equip Dell	T 26664	\$355.00	3/27/2013	admin201
Was Checked Out to Central, Library Office/Storage (Faculty: P 2000133) Due 7/2/2019 -- Weeded				
Equip Dell	T 26665	\$355.00	3/27/2013	admin201
Was Checked Out to Oney, Tiffany (Faculty: P 2000151) Due 7/2/2019 -- Weeded				
Equip Dell	T 26673	\$355.00	3/27/2013	admin201
Was Checked Out to McAtee, Randi (Faculty: P 80178) Due 7/2/2019 -- Weeded				
Equip Dell	T 26674	\$355.00	3/27/2013	admin201
Was Available -- Weeded				

Dell Optiplex 755 : Computer CPU and 19 (P1913) Monitor Core 2 Duo, 2.33 g (Removed: 1)

Author: Dell, Spring 2013.

Call Number	Barcode	Price	Acquired	Removed By
Equip Dell	T 26762	\$350.00	5/20/2013	admin201

Was Available -- Weeded

Dell Optiplex 755 : Computer CPU Only Core 2 Duo, 2.33 ghz, DDR2, 2.0 GB, (Removed: 1)

Author: Dell, Spring 2013.

Published: 2013

Call Number	Barcode	Price	Acquired	Removed By
Equip	T 27012	\$219.00	8/20/2013	admin201

Was Checked Out to Central, Library Office/Storage (Faculty: P 2000133) Due 7/2/2019 -- Weeded

Dell Printer 2350 dn Black & White (Removed: 2)

Call Number	Barcode	Price	Acquired	Removed By
Equipment	T 25559	\$180.00	2/22/2011	admin201
Was Available -- Weeded				
Equipment	T 25571	\$180.00	2/22/2011	admin201
Was Checked Out to 5th Grade Hall, Storage (Faculty: P 2000113) Due 7/2/2019 -- Weeded				

Document Camera Aver Information POB7A Model. (Removed: 1)

Author: 2012.

Published: 2012

Call Number	Barcode	Price	Acquired	Removed By
Equip Doc Cam	T 26079	\$339.99	5/17/2012	admin201

Was Checked Out to Watkins, Valerie (Faculty: P 11006) Due 7/2/2019 -- Weeded

Library Weeding Log

Central Elementary School

From: 5/16/2019 To: 5/16/2019

5/16/2019 - Copies Removed: 13

Projector NEC NP400 (Removed: 2)

Author: NEC, 2008.

Published: 2013

Call Number	Barcode	Price	Acquired	Removed By
equip	T 65905	\$600.00	10/30/2013	admin201
Was Checked Out to Library/Computer Lab, Library/Computer Lab (Faculty: P 2000099) Due 7/2/2019 -- Weeded				
equip NEC Projector	T 65960	\$700.00	5/20/2014	admin201
Was Checked Out to Central, Library Office/Storage (Faculty: P 2000133) Due 7/2/2019 -- Weeded				

From: 5/16/2019 To: 5/16/2019 Total Copies Removed: 13

Deleted: 0, Transferred: 0, Weeded: 13



Draw Add to Board Agenda for discussion No action

Doug Brown, Superintendent
Idable Public Schools
200 Northeast Avenue C
Idabel, OK 74745-3226

Dear Doug Brown,

In preparation for when students sustain an accidental injury under your school's supervision, I encourage you and your school board to review your school's student accident insurance options for the 2019-2020 school year.

This type of coverage is designed to protect your school in situations where parents/guardians view the **Idable Public Schools** responsible for their child's injury because the non-liable accident occurred while at school or participating in a school sport. These difficult situations are becoming more common for Oklahoma Schools because many health plans contain a high deductible and several families are searching for alternative ways to pay for their child's medical expenses.

Schools that currently have a student accident policy, view this coverage as a great community relations benefit while also protecting themselves from handling unpleasant conversations with upset family members.

I believe when you review your school's student accident insurance options, you will see that there are affordable ways in providing this type of coverage for all your students.

Please take the time to complete the Request for Quote form enclosed or contact me at (800) 328-2739/sonnyh@sas-mn.com.

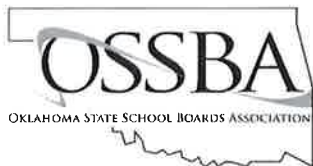
Sincerely,

Sonny Heinrich, Regional Representative
Student Assurance Services, Inc.

OSIG Oklahoma School Insurance Group Property Insurance Information

	Minimum	Recommended	Actual	Current			
Frame	\$85.00	\$85.00	\$85.00	\$39.17	Greenhouse, Portable Classroom, Concessions etc		
Joisted Masonry	\$90.00	\$95.00	\$125.00	\$39.17	Bus Barn		
Non Combustable	\$102.00	\$125.00	\$125.00	\$106.33	Storage Bldg, Portable Class, PE Bldg, Pressbox		
Masonry Non Comb	\$107.00	\$130.00	\$165.00	\$135.48	School buildings		
Fire Resistant	\$112.00	\$150.00		---	NA		
Mod Fire Resistant	\$112.00	\$150.00		---	NA		

Actual cost
to
reconstruct



Policy Renewal

Fax

Attention: Policy 2019-2020

Fax Number: (405) 609-3091

Please continue Idabel School
(School Name)

Public Schools policy subscription for 2019-2020.

Purchase Order # _____

School board voted to subscribe to policy services on

6/10 _____ 2019.

Superintendent's Name: Doug Brown

Upcoming Events

OSSBA/CCOSA Golf Tournament
Thursday, August 22
Lake Hefner Golf Club
Oklahoma City

Is the Superintendent new this year? YES NO

First year Superintendent? YES NO

OSSBA/CCOSA Annual Conference
Friday – Sunday, August 23-25
Cox Convention Center
Oklahoma City

Delegate Assembly
Saturday, August 24
Cox Convention Center
Oklahoma City

Board Clerk Signature (board clerk's signature is also a grant of permission to receive faxes from OSSBA)

Date: 6/10/19 Pages (with cover): _____

For more information visit our website at www.ossba.org

2019-2020 Cooperative Agreement / Title III Consortium Member District Board Approval Form

The Board of Education of **Idabel** Public Schools, Title III Consortium Member District, agrees to enter in to a Cooperative Agreement with the Board of Education of **McAlester** Public Schools, Title III Consortium Lead Fiscal Agent, for the purpose of creating a Title III, Part A consortium.

The Board of Education agrees that the Title III Consortium Member District will-

- *Work cooperatively, where appropriate, to address the needs of consortium partner districts for improving services for EL students.*
- *Work cooperatively, where appropriate, to address the needs of consortium partner districts relating to professional development to improve instruction and learning for EL students.*
- *Support district EL leadership in attending the required Title III consultation to be facilitated by the consortium Lead Fiscal Agent.*

Approved by the Board of Education of **Idabel** Public Schools on June 10, 2019.

Printed Name	Signature	Date
Board of Education President		

Printed Name	Signature	Date
Superintendent		



IDABEL PUBLIC SCHOOLS

Revenue/Expenditure Summary

Options: Fund: 60, Date Range: 7/1/2018 - 6/30/2019

	Begin Balance	Receipts	Adjusting Entries	Payments	Cash End Balance	Unpaid POs	End Balance
Unit - 050 DISTRICT WIDE							
983 GENERAL - ADMINISTRATION	\$0.00	\$11,431.17	\$6,328.67	\$14,047.23	\$3,712.61	\$0.00	\$3,712.61
985 DRIVERS ED - ADMINISTRATION	\$0.00	\$3,925.00	\$0.00	\$0.00	\$3,925.00	\$0.00	\$3,925.00
986 REFUND ACCT - ALL SCHOOLS	\$0.00	\$906.00	\$120.00	\$0.00	\$1,026.00	\$0.00	\$1,026.00
987 CAFETERIA - REFUND ACCT	\$0.00	\$9,866.66	\$0.00	\$0.00	\$9,866.66	\$0.00	\$9,866.66
Total Unit - 050 DISTRICT WIDE	\$0.00	\$26,128.83	\$6,448.67	\$14,047.23	\$18,530.27	\$0.00	\$18,530.27
Unit - 105 EVENSTART-EARLY CHILDHOOD							
980 GENERAL STUDENT - EVENSTART	\$0.00	\$1,222.92	\$728.63	\$1,258.16	\$693.39	\$0.00	\$693.39
Total Unit - 105 EVENSTART-EARLY CHILDHOOD	\$0.00	\$1,222.92	\$728.63	\$1,258.16	\$693.39	\$0.00	\$693.39
Unit - 110 CENTRAL ELEMENTARY							
930 GENERAL STUDENT - CENTRAL	\$0.00	\$26,573.92	\$29,029.21	\$18,864.56	\$36,738.57	\$1,097.24	\$35,641.33
931 BOOK FAIR - CENTRAL	\$0.00	\$4,498.95	\$2,082.59	\$3,488.43	\$3,093.11	\$2,100.00	\$993.11
932 COKE - CENTRAL	\$0.00	\$869.00	\$5,633.02	\$2,224.66	\$4,277.36	\$105.00	\$4,172.36
933 CHARACTER COUNTS - CENTRAL	\$0.00	\$227.25	\$740.12	\$510.72	\$456.65	\$0.00	\$456.65
934 BROADWAY KIDS - CENTRAL	\$0.00	\$2,000.00	\$915.31	\$1,352.92	\$1,562.39	\$0.00	\$1,562.39
936 5TH GRADE - CENTRAL	\$0.00	\$0.00	\$245.11	\$0.00	\$245.11	\$0.00	\$245.11
937 STEM - CENTRAL	\$0.00	\$0.00	\$593.57	\$289.29	\$304.28	\$0.00	\$304.28
938 PTO - CENTRAL	\$0.00	\$3,244.63	\$3,731.98	\$325.00	\$6,651.61	\$0.00	\$6,651.61
Total Unit - 110 CENTRAL ELEMENTARY	\$0.00	\$37,413.75	\$42,970.91	\$27,055.58	\$53,329.08	\$3,302.24	\$50,026.84
Unit - 120 PRIMARY SOUTH							
941 PSE LIBRARY - PRIMARY SOUTH	\$0.00	\$3,653.46	\$778.34	\$3,476.62	\$955.18	\$0.00	\$955.18
942 COKE - PRIMARY SOUTH	\$0.00	\$3,424.75	\$1,115.12	\$2,531.43	\$2,008.44	\$0.00	\$2,008.44
947 PTO - PRIMARY SOUTH	\$0.00	\$44.50	\$885.55	\$0.00	\$930.05	\$0.00	\$930.05
952 STUDENT SERV-PRIMARY SOUTH	\$0.00	\$700.00	\$846.37	\$929.95	\$616.42	\$0.00	\$616.42
953 SWEET SOUNDS-PRIMARY SOUTH	\$0.00	\$906.75	\$457.20	\$748.97	\$614.98	\$0.00	\$614.98
962 PRE K & K - PRIMARY SOUTH	\$0.00	\$18,147.61	\$2,873.51	\$14,832.64	\$6,188.48	\$0.00	\$6,188.48
Total Unit - 120 PRIMARY SOUTH	\$0.00	\$26,877.07	\$6,956.09	\$22,519.61	\$11,313.55	\$0.00	\$11,313.55
Unit - 505 IDABEL MIDDLE SCHOOL							
812 BAND - HS	\$0.00	\$0.00	\$0.00	\$1,177.69	(\$1,177.69)	\$0.00	(\$1,177.69)
900 ART - MIDDLE SCHOOL	\$0.00	\$145.70	\$56.06	\$0.00	\$201.76	\$0.00	\$201.76
901 DISTRICT TECH USE FEE- MS	\$0.00	\$9,784.00	\$0.00	\$3,000.00	\$6,784.00	\$0.00	\$6,784.00
902 BAND - MIDDLE SCHOOL	\$0.00	\$14,847.89	\$1,964.85	\$15,845.68	\$967.06	\$0.00	\$967.06
903 CHEERLEADERS-MIDDLE SCHOOL	\$0.00	\$9,673.81	\$5,100.39	\$9,634.05	\$5,140.15	\$0.00	\$5,140.15
904 CHORAL MUSIC - MIDDLE SCHOOL	\$0.00	\$3,787.71	\$2,629.79	\$2,878.15	\$3,539.35	\$0.00	\$3,539.35
905 COMP SPORTS - MIDDLE SCHOOL	\$0.00	\$18,777.75	\$4,916.41	\$13,876.11	\$9,818.05	\$0.00	\$9,818.05
906 FACULTY ACCOUNT-MIDDLE SCH	\$0.00	\$0.00	\$51.72	\$0.00	\$51.72	\$0.00	\$51.72
907 HONOR SOCIETY-MIDDLE SCHOOL	\$0.00	\$2,485.00	\$3,760.10	\$2,038.81	\$4,206.29	\$0.00	\$4,206.29
908 LEGO - MIDDLE SCHOOL	\$0.00	\$1,306.42	\$3,796.64	\$1,507.54	\$3,595.52	\$0.00	\$3,595.52
909 LIBRARY MISC - MIDDLE SCHOOL	\$0.00	\$1,104.80	\$43.79	\$907.84	\$240.75	\$0.00	\$240.75
910 TIME TREKKERS - MIDDLE SCH	\$0.00	\$13,721.18	\$1,749.19	\$8,717.31	\$6,753.06	\$1,055.00	\$5,698.06
911 COMP ACADEMICS-MIDDLE SCHOOL	\$0.00	\$0.00	\$164.95	\$83.75	\$81.20	\$0.00	\$81.20
913 SCIENCE DEPT - MIDDLE SCHOOL	\$0.00	\$0.00	\$1,692.29	\$0.00	\$1,692.29	\$0.00	\$1,692.29
915 SPORT JACKET - MIDDLE SCHOOL	\$0.00	\$0.00	\$35.29	\$0.00	\$35.29	\$0.00	\$35.29
916 STUDENT CO - MIDDLE SCHOOL	\$0.00	\$896.00	\$2,285.31	\$787.00	\$2,394.31	\$0.00	\$2,394.31
921 MIDDLE SCHOOL SPECIAL - MS	\$0.00	\$11,156.68	\$2,473.16	\$8,458.56	\$5,171.28	\$0.00	\$5,171.28
922 HISPANIC CLUB - MIDDLE SCHOOL	\$0.00	\$757.55	\$287.61	\$828.44	\$216.72	\$0.00	\$216.72
927 YEARBOOK - MIDDLE SCHOOL	\$0.00	\$20.00	\$118.87	\$0.00	\$138.87	\$100.00	\$38.87
Total Unit - 505 IDABEL MIDDLE SCHOOL	\$0.00	\$88,464.49	\$31,126.42	\$69,740.93	\$49,849.98	\$1,155.00	\$48,694.98
Unit - 710 IDABEL HIGH SCHOOL							
802 ANNUAL - HS	\$0.00	\$5,240.00	\$3,873.94	\$3,739.44	\$5,374.50	\$0.00	\$5,374.50
803 IDABEL ALUMNI ASSOCIATION-HS	\$0.00	\$5,308.50	\$9,315.30	\$6,237.26	\$8,386.54	\$0.00	\$8,386.54
804 ART - HS	\$0.00	\$220.00	\$75.44	\$0.00	\$295.44	\$0.00	\$295.44
805 LEO CLUB - HS	\$0.00	\$126.00	\$324.25	\$24.73	\$425.52	\$0.00	\$425.52
806 BASEBALL FIELD PRO-HS	\$0.00	\$0.00	\$6,750.17	\$6,000.00	\$750.17	\$0.00	\$750.17
807 DISTRICT TECH USE FEE- HS	\$0.00	\$10,983.00	\$0.00	\$3,552.73	\$7,430.27	\$0.00	\$7,430.27
808 SPECIAL OLYMPICS- HS	\$0.00	\$22,104.50	\$2,120.47	\$8,449.65	\$15,775.32	\$5,580.00	\$10,195.32
809 BAND UNIFORMS - HIGH SCHOOL	\$0.00	\$19,875.73	\$0.00	\$19,875.39	\$0.34	\$0.00	\$0.34

IDABEL PUBLIC SCHOOLS

Revenue/Expenditure Summary

Options: Fund: 60, Date Range: 7/1/2018 - 6/30/2019

	Begin Balance	Receipts	Adjusting Entries	Payments	Cash End Balance	Unpaid POs	End Balance
Unit - 710 IDABEL HIGH SCHOOL							
810 ATHLETICS - HS	\$0.00	\$76,807.50	\$5,206.18	\$72,402.56	\$9,611.12	\$895.00	\$8,716.12
811 FOOTBALL LOCKERS - HS	\$0.00	\$0.00	\$541.83	\$0.00	\$541.83	\$0.00	\$541.83
812 BAND - HS	\$0.00	\$56,735.23	\$2,235.61	\$55,907.44	\$3,063.40	\$0.00	\$3,063.40
813 TRACK SURFACE - HS	\$0.00	\$3,000.00	\$5,170.00	\$0.00	\$8,170.00	\$0.00	\$8,170.00
814 CALCULUS - HS	\$0.00	\$0.00	\$63.00	\$0.00	\$63.00	\$0.00	\$63.00
815 ATHLETIC TRAINING-NFL GRANT - HS	\$0.00	\$0.00	\$20,000.00	\$0.00	\$20,000.00	\$0.00	\$20,000.00
818 CHEERLEADERS - HS	\$0.00	\$12,970.54	\$4,376.16	\$15,729.06	\$1,617.64	\$127.00	\$1,490.64
820 DANCE TEAM - HS	\$0.00	\$6,766.00	\$366.01	\$6,026.04	\$1,105.97	\$0.00	\$1,105.97
822 FACULTY CONCESSIONS - HS	\$0.00	\$63.77	\$602.53	\$248.08	\$418.22	\$200.00	\$218.22
826 FBLA (BPA) - HS	\$0.00	\$96.03	\$4,521.87	\$0.00	\$4,617.90	\$30.00	\$4,587.90
828 FCA - HS	\$0.00	\$0.00	\$1,203.65	\$0.00	\$1,203.65	\$0.00	\$1,203.65
830 FFA - HIGH SCHOOL	\$0.00	\$26,137.40	\$7,444.63	\$30,401.83	\$3,180.20	\$154.00	\$3,026.20
832 FHA (FCCLA) - HIGH SCHOOL	\$0.00	\$2,042.00	\$6,322.13	\$1,949.00	\$6,415.13	\$0.00	\$6,415.13
833 GUIDANCE - HIGH SCHOOL	\$0.00	\$205.00	\$534.62	\$85.00	\$654.62	\$0.00	\$654.62
837 KEY CLUB - HIGH SCHOOL	\$0.00	\$1,690.00	\$2,653.52	\$1,537.68	\$2,805.84	\$0.00	\$2,805.84
839 IHS ACADEMIC TEAM-HIGH SCHOOL	\$0.00	\$616.00	\$1,815.40	\$1,007.00	\$1,424.40	\$0.00	\$1,424.40
840 LIBRARY - HIGH SCHOOL	\$0.00	\$1,132.00	\$1,405.43	\$1,854.00	\$683.43	\$0.00	\$683.43
842 NATIVE AM CLUB - HIGH SCHOOL	\$0.00	\$2,158.00	\$260.81	\$729.89	\$1,688.92	\$0.00	\$1,688.92
843 JACKETS - HIGH SCHOOL	\$0.00	\$0.00	\$179.00	\$0.00	\$179.00	\$0.00	\$179.00
845 JOURNALISM - HIGH SCHOOL	\$0.00	\$0.00	\$5.16	\$0.00	\$5.16	\$0.00	\$5.16
846 NAT'L HONOR SOC - HIGH SCHOOL	\$0.00	\$1,230.20	\$213.05	\$1,136.00	\$307.25	\$0.00	\$307.25
850 SCIENCE DEPT - HIGH SCHOOL	\$0.00	\$0.00	\$43.45	\$0.00	\$43.45	\$0.00	\$43.45
851 MISS I.H.S. - HIGH SCHOOL	\$0.00	\$2,475.00	\$6,378.59	\$2,643.36	\$6,210.23	\$204.83	\$6,005.40
852 POPTIME - HIGH SCHOOL	\$0.00	\$16,336.25	\$1,553.34	\$13,349.99	\$4,539.60	\$920.26	\$3,619.34
853 ROBOTICS - HIGH SCHOOL	\$0.00	\$0.00	\$168.24	\$0.00	\$168.24	\$0.00	\$168.24
854 SENIORS 2021- HIGH SCHOOL	\$0.00	\$0.00	\$916.28	\$53.14	\$863.14	\$0.00	\$863.14
856 SENIORS 2019- HIGH SCHOOL	\$0.00	\$0.00	\$2,304.51	\$2,245.17	\$59.34	\$0.00	\$59.34
858 SENIORS 2022 - HIGH SCHOOL	\$0.00	\$200.00	\$2.05	\$76.84	\$125.21	\$0.00	\$125.21
859 SPANISH CLUB - HIGH SCHOOL	\$0.00	\$555.00	\$30.89	\$543.10	\$42.79	\$0.00	\$42.79
861 SENIORS 2020 - HIGH SCHOOL	\$0.00	\$3,330.36	\$85.03	\$1,211.84	\$2,203.55	\$0.00	\$2,203.55
862 STUDENT INCENTIVE-HIGH SCHOOL	\$0.00	\$2,759.85	\$4,690.77	\$5,448.39	\$2,002.23	\$135.00	\$1,867.23
866 STUDENT COUNCIL-HIGH SCHOOL	\$0.00	\$1,715.00	\$16.36	\$1,648.11	\$83.25	\$0.00	\$83.25
867 WARRIOR ACADEMY-HIGH SCH	\$0.00	\$0.00	\$972.78	\$139.36	\$833.42	\$0.00	\$833.42
870 WARRIOR CLUB - HIGH SCHOOL	\$0.00	\$31,084.68	\$4,390.43	\$33,870.70	\$1,604.41	\$868.00	\$736.41
Total Unit - 710 IDABEL HIGH SCHOOL	\$0.00	\$313,963.54	\$109,132.88	\$298,122.78	\$124,973.64	\$9,114.09	\$115,859.55
Total	\$0.00	\$494,070.60	\$197,363.60	\$432,744.29	\$258,689.91	\$13,571.33	\$245,118.58

LOCAL BOARD-APPROVED EXPENDITURES

Air-conditioning equipment (ceiling fans, wall units, condensers, etc.)
Artists-in-Residence program
Assemblies
Assertive discipline program expenses
Athletic equipment and supplies
Banquet/reception expenses
Camp fees (cheerleading, student council, etc.)
Cards, flowers, gifts, and staff social activities (from teachers' courtesy funds)
Classroom equipment/classroom improvements
Classroom supplies and materials
Class/club t-shirts
Class/school – sponsored field trips
Clothes for the needy (coats, shoes, socks, etc.)
Club refreshments, parties, luncheons, picnics, etc.
Contest entry fees
Contributions when money is raised for a specific cause
Copier rental fees and repairs
Custodial supplies
Department development expenses
Director-approved out of town trips
District reimbursement of fees collected
Dues and fees
Educational trip expenditures
Expenses related to competition or shows held for students (science fairs, track meets, band contests, etc.)
Faculty cookbook
Film and developing expenses
Films and videos (rental and/or purchases)
Fund-raising expenses
Graduation expenses
Maintenance of grounds
Homecoming festivities
In-service training and workshop fees (professional development)
Library books, periodicals, and newspapers
Marquee
Nurse's clinic supplies
Odyssey of the Mind program expenses
Office equipment
Office furniture
Office equipment repair
Office supplies

ADDENDUM "A"

LOCAL BOARD-APPROVED EXPENDITURES

Air-conditioning equipment (ceiling fans, wall units, condensers, etc.)
Artists-in-Residence program
Assemblies
Assertive discipline program expenses
Athletic equipment and supplies
Banquet/reception expenses
Camp fees (cheerleading, student council, etc.)
Cards, flowers, gifts, and staff social activities (from teachers' courtesy funds)
Classroom equipment/classroom improvements
Classroom supplies and materials
Class/club t-shirts
Class/school – sponsored field trips
Clothes for the needy (coats, shoes, socks, etc.)
Club refreshments, parties, luncheons, picnics, etc.
Contest entry fees
Contributions when money is raised for a specific cause
Copier rental fees and repairs
Custodial supplies
Department development expenses
Director-approved out of town trips
District reimbursement of fees collected
Dues and fees
Educational trip expenditures
Expenses related to competition or shows held for students (science fairs, track meets, band contests, etc.)
Faculty cookbook
Film and developing expenses
Films and videos (rental and/or purchases)
Fund-raising expenses
Graduation expenses
Maintenance of grounds
Homecoming festivities
In-service training and workshop fees (professional development)
Library books, periodicals, and newspapers
Marquee
Nurse's clinic supplies
Odyssey of the Mind program expenses
Office equipment
Office furniture
Office equipment repair
Office supplies
