

To: Lewiston Consolidated School Board of Education
From: Todd Halvorsen
Re: Agenda Summary
Date: Friday, June 26, 2026

1. Opening Procedures
 - 1.1. Call Meeting to Order
 - 1.2. Roll Call
 - 1.3. Acknowledge Meeting Notice
 - 1.4. Pledge of Allegiance
 - 1.5. Welcome Visitors
 - 1.6. Approval of Agenda
 - 1.7. Public Comment
2. Action Items
 - 2.1. Discuss, consider, and take all necessary action to adopt a resolution increasing the school district's base growth percentage, used to determine the school district's property tax request authority, by up to 7%.
 - 2.2. Discuss, consider, and take all necessary action to approve the monthly installment of \$6300.00 with the Department of Treasury-Internal Revenue Service beginning on September 20th, 2026.
 - 2.3. Discuss, consider, and take all necessary action for water damage repair from Paul Davis Restoration.
 - 2.4. Discuss, consider, and take all necessary action to approve a contract for the Technology Integrator position for the 2026-2027 school year.
3. Non- Action Items
4. Announcements
5. Adjournment

** Closed Session: If during the course of the meeting, discussion of any item on the agenda should be held in a closed meeting the board will conduct a closed meeting in accordance with the Nebraska Open Meeting Act Statute 84-1410(1).*

Sequence of Agenda: The sequence of topics is subject to change at the discretion of the board. Please arrive at the beginning of the meeting.

KAREN A. HAASE ^{NI., SD, IA, WI, KS}
STEVE WILLIAMS ^{NE, SD}
BOBBY TRUHE ^{NE, SD}
COADY H. PRUETT ^{NE, SD, KS, CO}
JORDAN JOHNSON ^{NE, SD, WY}



TYLER COVERDALE ^{SD}
SARA ROGERS ^{SD, NE}
AMANDA DABNEY ^{NE, WY}
SHARI RUSSELL, Paralegal

MEMORANDUM

TO: Superintendent Todd Halvorsen
FROM: Coady H. Pruett
DATE: June 11, 2026
RE: Board Vote to Increase Base Growth Percentage Used to Determine Property Tax Request Authority

I. INTRODUCTION

Thank you for reaching out about resources for your board of education to use in considering whether it will exercise its ability to increase the base growth percentage used to determine the school district's property tax request authority. We prepared this memorandum summarizing the steps that a school district must follow to carry out such an increase, together with the attached documents that will help your district do so.

II. DISCUSSION

A. Background

As you know, Nebraska has enacted the *School District Property Tax Limitation Act* (the "Act"), which was part of LB 243 (2023) and is now codified at NEB. REV. STAT. §§ 79-3401 to 79-3408. The Act's default rule is that the magnitude of a school district's property tax request (irrespective of either the \$1.05 levy limit, or otherwise permissible budget growth) is limited to a statutorily-defined **property tax request authority**. The Act generally

206 SOUTH 13TH STREET, SUITE 1100
LINCOLN, NEBRASKA 68508

KSB SCHOOL LAW, PC, LLO
KSB.SCHOOLLAW.COM
(402) 804-8000

300 NORTH DAKOTA AVENUE, SUITE 609
P.O. Box 2281
SIOUX FALLS, SOUTH DAKOTA 57104

ATTORNEYS LICENSED IN STATES INDICATED

requires the Nebraska Department of Education (the "Department") to calculate each district's property tax request authority as follows:

Step One: "The school district's property tax request¹ from the prior year shall be added to the non-property-tax revenue² from the prior year minus any investment income from special building funds from the prior year, and the total shall be increased by the school district's **base growth percentage.**"³ *Id.* § 79-3403(2)(a).

Step Two: The amount calculated in Step One is then "decreased by the amount of total non-property-tax revenue for the current year and adjusted for any known or documented errors in

¹ "Property tax request means the total amount of property taxes for the general and special building funds requested to be raised for a school district through the levy imposed pursuant to section 77-1601." NEB. REV. STAT. § 79-3402(6).

² "Non-property-tax revenue means revenue of a school district from all state and local sources other than real and personal property taxes. Non-property-tax revenue does not include grants, donations, bonds, all revenue from a school district that has been merged into another school district or dissolved, activity funds, bond funds, cooperative funds, depreciation funds, employee benefit funds, nutrition funds, qualified capital purpose undertaking funds, or student fee funds, insurance proceeds, proceeds from the sale of property including land, buildings, or capital assets in special building funds, or proceeds of financing." *Id.* § 79-3402(5).

³ The Act defines "base growth percentage" as follows:

Base growth percentage means the sum of:

(a) Three percent;

(b) The annual percentage increase in the student enrollment of the school district multiplied by:

(i) One if the school district's student enrollment has grown by an average of at least three percent and by at least one hundred fifty students over the preceding three years;

(ii) Seven-tenths if the school district's student enrollment has grown by an average of at least three percent over the preceding three years; or

(iii) Four-tenths if subdivisions (3)(b)(i) and (3)(b)(ii) of this section do not apply;

(c) The percentage obtained by first dividing the annual increase in the total number of limited English proficiency students in the school district by the student enrollment of the school district and then multiplying the quotient by fifteen hundredths; and

(d) The percentage obtained by first dividing the annual increase in the total number of poverty students in the school district by the student enrollment of the school district and then multiplying the quotient by fifteen hundredths."

Id. § 79-3402(3).

documentation received by the department from the school district.” *Id.* § 79-3403(2)(b).

The Department then certifies the amount calculated by this method to each school board as the district’s property tax request authority.

The Act lays out two methods by which your district can exceed this default rule for calculating the magnitude of the district’s property tax request. First, the school district’s property tax request may exceed its property tax request authority by a specific amount when such increase is “approved by a sixty percent majority of legal voters voting on the issue at a special election called for such purpose.” *Id.* § 79-3405(1). You have not asked about this method and this memo does not address the special election method of increasing your permissible property tax request. The second method is discussed in more detail below.

B. Board Vote to Increase Base Growth Percentage

Unlike the special election method of increasing the actual property tax request by a certain amount, this method allows the board to vote to increase *the base growth percentage*. This should have the effect of increasing the property tax request authority for the current year, but of course the absolute amount of the property tax request authority (in dollars) will depend upon the changes in the non-property-tax revenue for the current year.

The proposed increase in the base growth percentage must be approved by at least 70% of the school board members. Please note that this is not 70% of a quorum, but rather 70% of the entire board—irrespective of the number of board members present for the meeting. So, as an example, for a six-member board, at least five board members must vote in favor of the proposed increase even if only five board members are present.

The maximum base growth percentage increase that a school district can adopt by a board vote **depends on the size of the school district’s average daily membership** (“ADM”). In our conversations with the Department, they typically use the “most recent” ADM numbers for each school district, which (for now) shows the numbers for the 2024–2025 school year. The following table shows the maximum increases that correspond to the size of the school’s ADM.

Average Daily Membership	Maximum Increase in Base Growth %
Up to 471 students	7%
472 to 3,044 students	6%
3,045 to 10,000 students	5%
More than 10,000 students	4%

Prior to voting to increase your district's base growth percentage by board vote, the school board must "publish notice of the upcoming vote in a newspaper of general circulation in the school district." *Id.* § 79-3405(2)(b). This publication must "occur at least one week prior to the public meeting at which the vote will be taken." *Id.* As you most likely already know, just as for the date of publication for purposes of a regular board meeting, the time is measured from **when the notice actually appears in the newspaper**, and not when you submit it for publication.

We have prepared a sample meeting notice, sample agenda item, and sample motion in the attached documents.

We recommend that the board's vote on the proposed increase take the form of a written resolution. Although a written resolution is not legally required (a simple board motion should suffice), we believe that the resolution will help organize the board's discussion and serve as good evidence of the specific vote that was taken if such a vote is later scrutinized. We prepared the attached resolution for your use. As you can see, there are placeholders for both the actual percentage growth that is approved as well as the vote tally (which must be at least 70% of the board members).

If the board approves the proposed increase, you can submit documentation of that approval (e.g., the enclosed resolution) to the Department when you submit your budget documents.

III. CONCLUSION

We hope that you find this information and the attached resources helpful. If you have any additional questions or if there is anything that you would like to discuss, please do not hesitate to reach out to me at coady@ksbschoollaw.com or (402) 817-8879. We are happy to help you navigate this process.

AGENDA ITEM TO INCREASE BASE GROWTH PERCENTAGE

Discuss, consider, and take all necessary action to adopt resolution increasing the school district's base growth percentage, used to determine the school district's property tax request authority, by up to 7%.

SAMPLE MOTION TO INCREASE BASE GROWTH PERCENTAGE

Bd. President: The next item on the agenda is discuss, consider, and take all necessary action to adopt resolution increasing the school district's base growth percentage, used to determine the school district's property tax request authority, by up to 7%.

I will entertain a motion to adopt the resolution, as presented, to increase the school district's base growth percentage used to determine the school district's property tax request authority by %.

Bd. Member 1: So moved.

Bd. President: Second?

Bd. Member 2: Second.

Discussion:

Roll Call Vote:

[REMEMBER: The vote must pass by at least 70% of ALL BOARD MEMBERS—not just 70% of board members present. So, for a six-member board, the resolution must pass by the affirmative vote of at least five board members.]

Bd. President: Motion carries (or motion fails).

**RESOLUTION OF THE BOARD OF EDUCATION TO
INCREASE BASE GROWTH PERCENTAGE TO
DETERMINE ITS PROPERTY TAX REQUEST AUTHORITY**

WHEREAS, the Board of Education ("Board") for **Pawnee County School District 67-0069**, commonly known as **Lewiston Consolidated Schools** (the "School District"), is planning the School District's annual budget for the 2026-2027 school year; and

WHEREAS, in an effort to maintain budget flexibility and to ensure the ability to secure adequate funding in the current or future school years so that the School District is in a position to meet its obligations to its students, the Board believes that it is prudent to increase the base growth percentage used to determine the School District's property tax request authority under NEB. REV. STAT. § 79-3403; and

WHEREAS, Nebraska law authorizes the Board, upon an affirmative vote of at least seventy percent (70%) of the Board, to increase such base growth percentage by up to 7%.

BE IT THEREFORE RESOLVED that, pursuant to NEB. REV. STAT. § 79-3405(2), the Board hereby increases the base growth percentage used to determine its property tax request authority for the 2026-2027 budget in an amount of ____%.

Said Resolution was adopted by the Board of Education by a vote of ____ to ____ on the ____ day of _____, 2026.

President of the Board of Education

ATTEST:

Secretary of the Board of Education

Form **433-D**
(August 2022)

Installment Agreement

(See Instructions on the back of this page)

Name and address of taxpayer(s)	Social Security or Employer Identification Number (SSN/EIN) <i>(Taxpayer)</i> <i>(Spouse)</i>
	Your telephone numbers (including area code) <i>(Home)</i> <i>(Work, cell, or business)</i>
	For assistance, call: 1-800-829-0115 or write Internal Revenue Service Ogden, UT 84201-0000

Submit a new Form W-4 to your employer to increase your withholding.

Kind of taxes (form numbers) 941	Tax periods 01/202206, 01/202209, 01/202212, 01/202303, 01/202306, 01/202412, 01/202506, 01/202509, 01/202512	Amount owed as of: 09/20/2026 \$354,486.92
-------------------------------------	---	--

I / We agree to pay the federal taxes shown above, PLUS PENALTIES AND INTEREST PROVIDED BY LAW, as follows:
\$6,300.00 on 09/20/2026 and \$6,300.00 on the 20th of each month thereafter.

I / We also agree to increase or decrease the above installment payment as follows:

Date of increase (or decrease)	Amount of increase (or decrease)	New installment payment amount

The terms of this agreement are provided on the back of this page. Please review them thoroughly.

By initialing here and my signature below, I agree to the terms of this agreement, as provided in this form, if it is approved by the Internal Revenue Service

Additional Conditions/Terms (To be completed by IRS)	By signing and submitting this form, I authorize the IRS to contact third parties and to disclose my tax information to third parties in order to process and administer this agreement over its duration.
--	--

DIRECT DEBIT – Attach a voided check or complete this part only if you choose to make payments by direct debit. Read the instructions on the back of this page.

a. Routing number:

b. Account number:

I authorize the U.S. Treasury and its designated Financial Agent to initiate a monthly ACH debit (electronic withdrawal) entry to the financial institution account indicated for payments of my Federal taxes owed, and the financial institution to debit the entry to this account. This authorization is to remain in full force and effect until I notify the Internal Revenue Service to terminate the authorization. To revoke payment, I must contact the Internal Revenue Service at the toll free number listed above no later than 14 business days prior to the payment (settlement) date. I also authorize the financial institutions involved in the processing of the electronic payments of taxes to receive confidential information necessary to answer inquiries and resolve issues related to the payments.

Debit Payments Self-Identifier
If you are unable to make electronic payments through a debit instrument (debit payments) by providing your banking information in a. and b. above, please check the box below:

I am unable to make debit payments

Note: Not checking this box indicates that you are able but choosing not to make debit payments. See Instructions to Taxpayer below for more details.

Your signature	Date	Title (if corporate officer or partner) Superintendent	Spouse's signature (if a joint liability)	Date
----------------	------	--	---	------

FOR IRS USE ONLY:

AGREEMENT LOCATOR NUMBER: **0 3 1 5**

Check the appropriate boxes:

<input checked="" type="checkbox"/> RSI "1" no further review	<input checked="" type="checkbox"/> AI "0" not a PPIA
<input type="checkbox"/> RSI "5" PPIA IMF 2 year review	<input type="checkbox"/> AI "1" Field Asset PPIA
<input type="checkbox"/> RSI "6" PPIA BMF 2 year review	<input type="checkbox"/> AI "2" - All other PPIAs

Agreement Review Cycle: Earliest CSED: 09/29/2035

Check box if pre-assessed modules included

Originator's ID #: 2614-4830 / 1000990322 Originator Code: 20

Name: H. POTEET Title: REVENUE OFFICER

Agreement examined or approved by (Signature, title, function) GROUP MANAGER	Date
--	------

A NOTICE OF FEDERAL TAX LIEN (check one box below)

HAS ALREADY BEEN FILED

WILL BE FILED IMMEDIATELY

WILL BE FILED WHEN TAX IS ASSESSED

MAY BE FILED IF THIS AGREEMENT DEFAULTS

NOTE: A NOTICE OF FEDERAL TAX LIEN WILL NOT BE FILED ON ANY PORTION OF YOUR LIABILITY WHICH REPRESENTS THE SHARED RESPONSIBILITY PAYMENT UNDER THE AFFORDABLE CARE ACT.

INSTRUCTIONS TO TAXPAYER

If not already completed by an IRS employee, please fill in the information in the spaces provided on the front of this form for:

- Your name (include spouse's name if a joint return) and current address; Your social security number and/or employer identification number (whichever applies to your tax liability); Your home and work, cell or business telephone numbers;
- The amount you can pay now as a partial payment;
- The amount you can pay each month (or the amount determined by IRS personnel); and
- The date you prefer to make this payment (This must be the same day for each month, from the 1st to the 28th). We must receive your payment by this date. If you elect the direct debit option, this is the day you want your payment electronically withdrawn from your financial institution account.

Review the terms of this agreement. When you've completed this agreement form, please sign and date it. Then, return Part 1 to IRS at the address on the letter that came with it or the address shown in the "For assistance" box on the front of the form.

Terms of this agreement

By completing and submitting this agreement, you (the taxpayer) agree to the following terms:

- This agreement will remain in effect until your liabilities (including penalties and interest) are paid in full, the statutory period for collection has expired, or the agreement is terminated. You will receive a notice from us prior to termination of your agreement.
- You will make each payment so that we (IRS) receive it by the monthly due date stated on the front of this form. **If you cannot make a scheduled payment, contact us immediately.**
- This agreement is based on your current financial condition. We may modify or terminate the agreement if our information shows that your ability to pay has significantly changed. You must provide updated financial information when requested.
- While this agreement is in effect, you must file all federal tax returns and pay any (federal) taxes you owe on time.
- We will apply your federal tax refunds or overpayments (if any) to the entire amount you owe, including the shared responsibility payment under the Affordable Care Act, until it is fully paid or the statutory period for collection has expired.
- You must pay a \$225 user fee, which we have authority to deduct from your first payment(s) (\$107 for Direct Debit). For low-income taxpayers (at or below 250% of Federal poverty guidelines), the user fee is reduced to \$43. The reduced user fee will be waived if you agree to make electronic payments through a debit instrument by providing your banking information in the Direct Debit section of this Form. For low-income taxpayers, unable to make electronic payments through a debit instrument, the reduced user fee will be reimbursed upon completion of the installment agreement. See Debit Payment Self- Identifier on page 1 and Form 13844 for qualifications and instructions.
- If you default on your installment agreement, you must pay a \$89 reinstatement fee if we reinstate the agreement. We have the authority to deduct this fee from your first payment(s) after the agreement is reinstated. For low-income taxpayers (at or below 250% of Federal poverty guidelines), the reinstatement fee is reduced to \$43. The reduced reinstatement fee will be waived if you agree to make electronic payments through a debit instrument. For low-income taxpayers, unable to make electronic payments through a debit instrument, the reduced reinstatement fee will be reimbursed upon completion of the installment agreement.
- We will apply all payments on this agreement in the best interests of the United States. Generally we will apply the payment to the oldest collection statute, which is normally the oldest tax year or period.
- **We can terminate your installment agreement if:**
 - You do not make monthly installment payments as agreed. You do not pay any other federal tax debt when due. You do not provide financial information when requested.
 - If we terminate your agreement, we may collect the entire amount you owe, EXCEPT the Individual Shared Responsibility Payment under the Affordable Care Act, by levy on your income, bank accounts or other assets, or by seizing your property.
 - We may terminate this agreement at any time if we find that collection of the tax is in jeopardy.
 - This agreement may require managerial approval. We'll notify you when we approve or don't approve the agreement.
 - We may file a Notice of Federal Tax Lien if one has not been filed previously which, may negatively impact your credit rating, but we will not file a Notice of Federal Tax Lien with respect to the individual shared responsibility payment under the Affordable Care Act.

HOW TO PAY BY DIRECT DEBIT

Instead of sending us a check, you can pay by direct debit (electronic withdrawal) from your checking account at a financial institution (such as a bank, mutual fund, brokerage firm, or credit union). To do so, fill in Lines a and b. Contact your financial institution to make sure that a direct debit is allowed and to get the correct routing and account numbers.

Line a. The first two digits of the routing number must be 01 through 12 or 21 through 32. Don't use a deposit slip to verify the number because it may contain internal routing numbers that are not part of the actual routing number.

Line b. The account number can be up to 17 characters. Include hyphens but omit spaces and special symbols. Enter the number from left to right and leave any unused boxes blank.

CHECKLIST FOR MAKING INSTALLMENT PAYMENTS:

1. Write your social security or employer identification number on each payment.
2. Make your check or money order payable to "United States Treasury."
3. Make each payment in an amount at least equal to the amount specified in this agreement.
4. Don't double one payment and skip the next without contacting us first.
5. Enclose a copy of the reminder notice, if you received one, with each payment using the envelope provided. Make a payment even if you do not receive a reminder notice, write the type of tax, the tax period and "Installment Agreement" on your payment. For example, "1040, 12/31/2021, Installment Agreement". You should choose the oldest unpaid tax period on your agreement. Mail the payment to the IRS address indicated on the front of this form.
6. If you didn't receive an envelope, call the number below.

This agreement will not affect your liability (if any) for backup withholding under Public Law 98-67, the Interest and Dividend Compliance Act of 1983

QUESTIONS? — If you have any questions, about the direct debit process or completing this form, please call the applicable telephone number below for assistance.

PAUL DAVIS RESTORATION - Lincoln
3641 S. 6th Street
Lincoln, NE 68502
Phone: (402) 474-1414
Fax: (402) 474-1467
Federal Tax Id #84-1691066

Insured: Lewiston Public Schools - mitigation
Property: 306 Tiger Ave
Lewiston, NE 68380

Home: (402) 643-1733

Claim Rep.: Brandon Palmer
Business: 3641 S 6th St.
Lincoln, NE 68502

Business: (402) 474-1414
E-mail: brandon.palmer@pauldavis.com

Estimator: Brandon Palmer
Business: 3641 S 6th St.
Lincoln, NE 68502

Business: (402) 474-1414
E-mail: brandon.palmer@pauldavis.com

Claim Number:

Policy Number:

Type of Loss:

Date of Loss:
Date Inspected:

Date Received:
Date Entered: 6/17/2026 3:42 PM

Price List: NELI8X_JUN26
Restoration/Service/Remodel
Estimate: LEWISTONSCHOOL_MIT

It has been our pleasure to provide you with the following estimate, based off of criteria set forth by the Institute of Inspection Cleaning and Restoration Certification (IICRC www.iicrc.org) for the repairs to your structure due to your recent loss. If you should have any questions in regard to this estimate, please contact us at the number listed above.

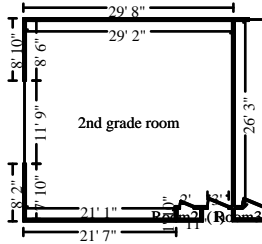
We specialize in restoration services for properties that have been damaged by water, fire, smoke, wind, tornadoes, vandalism, or other catastrophes. Our depth of experience and our commitment to quality service and workmanship mean that you can be confident about the work we perform. Our expert services include:

Water Damage Repair
Structural Drying
Mold Remediation and Prevention
Fire Damage Repair
Smoke Removal
Professional Cleaning and Deodorizing
Contents Cleaning, Inventory, Moving and Storage
Structural and Cosmetic Repairs
Emergency Board-Up and Structural Stabilization
Roofing
-Brandon Palmer

PAUL DAVIS RESTORATION - Lincoln
3641 S. 6th Street
Lincoln, NE 68502
Phone: (402) 474-1414
Fax: (402) 474-1467
Federal Tax Id #84-1691066

LEWISTONSCHOOL_MIT

Main Level



2nd grade room

Height: 10'

1,102.21 SF Walls	802.18 SF Ceiling
1,904.39 SF Walls & Ceiling	802.18 SF Floor
89.13 SY Flooring	114.33 LF Floor Perimeter
114.33 LF Ceil. Perimeter	

Window

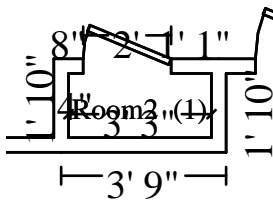
11' 9" X 3' 6"

Opens into Exterior

Door

3' X 6' 8"

Opens into Exterior



Subroom: Room2 (1)

Height: 10'

94.17 SF Walls	4.74 SF Ceiling
98.91 SF Walls & Ceiling	4.74 SF Floor
0.53 SY Flooring	9.42 LF Floor Perimeter
9.42 LF Ceil. Perimeter	

Door

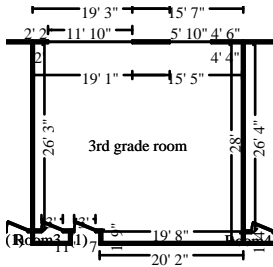
2' X 6' 8"

Opens into DEF_2ND_GRAD

DESCRIPTION	QTY	REMOVE	REPLACE	TAX	TOTAL
4. Tear out wet non-salvageable glue down carpet, cut/bag	116.67 SF	1.13	0.00	0.00	131.84
9. Tear out wet drywall, cleanup, bag, per LF - up to 2' tall	29.17 LF	4.01	0.00	0.00	116.97
10. Tear out wet paneling, bag for disposal	116.67 SF	0.66	0.00	0.00	77.00
11. Tear out baseboard	29.17 LF	0.57	0.00	0.00	16.63
12. Cabinet - lower (base) unit - Detach	12.00 LF	0.00	22.42	0.00	269.04
13. Countertop - flat laid plastic laminate - Detach	12.00 LF	0.00	7.31	0.00	87.72
14. Backsplash - flat laid/solid surface - Detach	14.00 LF	0.00	1.47	0.00	20.58
15. Contents - move out then reset - Large room	1.00 EA	0.00	107.50	0.00	107.50
41. Dehumidifier (per 24 hr period)- 110-159 ppd - No monitor.	6.93 EA	0.00	113.88	0.00	789.19

Totals: 2nd grade room 0.00 1,616.47

PAUL DAVIS RESTORATION - Lincoln
3641 S. 6th Street
Lincoln, NE 68502
Phone: (402) 474-1414
Fax: (402) 474-1467
Federal Tax Id #84-1691066

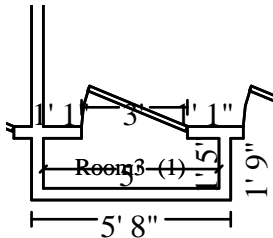


3rd grade room

Height: 10'

1,079.39 SF Walls	801.01 SF Ceiling
1,880.40 SF Walls & Ceiling	801.01 SF Floor
89.00 SY Flooring	114.42 LF Floor Perimeter
114.42 LF Ceil. Perimeter	

Window	11' 10" X 3' 8"	Opens into Exterior
Window	5' 10" X 3' 8"	Opens into Exterior
Door	3' X 6' 8"	Opens into Exterior



Subroom: Room3 (1)

Height: 10'

127.89 SF Walls	7.05 SF Ceiling
134.95 SF Walls & Ceiling	7.05 SF Floor
0.78 SY Flooring	12.79 LF Floor Perimeter
12.79 LF Ceil. Perimeter	

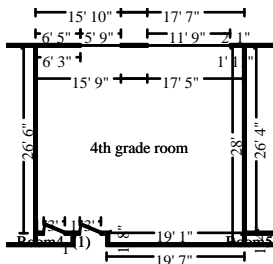
Door	3' X 6' 8"	Opens into DEF_3RD_GRAD
-------------	-------------------	--------------------------------

DESCRIPTION	QTY	REMOVE	REPLACE	TAX	TOTAL
5. Tear out wet non-salvageable glue down carpet, cut/bag	204.75 SF	1.13	0.00	0.00	231.37
17. Tear out wet drywall, cleanup, bag, per LF - up to 4" tall	29.25 LF	3.68	0.00	0.00	107.64
23. Tear out wet drywall, cleanup, bag, per LF - up to 2' tall above top of windows and inside window return	50.33 LF	4.01	0.00	0.00	201.82
18. Tear out wet paneling, bag for disposal	117.00 SF	0.66	0.00	0.00	77.22
19. Tear out baseboard	29.25 LF	0.57	0.00	0.00	16.67
20. Cabinet - lower (base) unit - Detach	12.00 LF	0.00	22.42	0.00	269.04
21. Countertop - flat laid plastic laminate - Detach	12.00 LF	0.00	7.31	0.00	87.72
22. Backsplash - flat laid/solid surface - Detach	14.00 LF	0.00	1.47	0.00	20.58
24. Contents - move out then reset - Large room	1.00 EA	0.00	107.50	0.00	107.50
42. Dehumidifier (per 24 hr period)- 110-159 ppd - No monitor.	6.93 EA	0.00	113.88	0.00	789.19

PAUL DAVIS RESTORATION - Lincoln
3641 S. 6th Street
Lincoln, NE 68502
Phone: (402) 474-1414
Fax: (402) 474-1467
Federal Tax Id #84-1691066

CONTINUED - 3rd grade room

DESCRIPTION	QTY	REMOVE	REPLACE	TAX	TOTAL
Totals: 3rd grade room				0.00	1,908.75

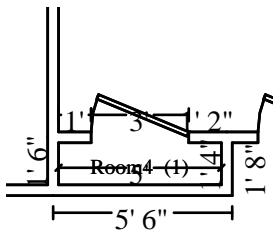


4th grade room

Height: 10'

1,083.13 SF Walls	803.45 SF Ceiling
1,886.58 SF Walls & Ceiling	803.45 SF Floor
89.27 SY Flooring	114.58 LF Floor Perimeter
114.58 LF Ceil. Perimeter	

Window	5' 9" X 3' 7"	Opens into Exterior
Window	11' 9" X 3' 7"	Opens into Exterior
Door	3' X 6' 8"	Opens into Exterior



Subroom: Room4 (1)

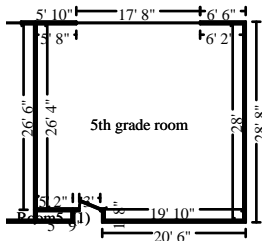
Height: 10'

125.87 SF Walls	6.46 SF Ceiling
132.33 SF Walls & Ceiling	6.46 SF Floor
0.72 SY Flooring	12.59 LF Floor Perimeter
12.59 LF Ceil. Perimeter	

Door	3' X 6' 8"	Opens into DEF_4TH_GRAD
-------------	-------------------	--------------------------------

DESCRIPTION	QTY	REMOVE	REPLACE	TAX	TOTAL
6. Tear out wet non-salvageable glue down carpet, cut/bag	16.00 SF	1.13	0.00	0.00	18.08
25. Tear out wet drywall, cleanup, bag, per LF - up to 2' tall sill of big window	11.75 LF	4.01	0.00	0.00	47.12
31. Tear out wet drywall, cleanup, bag, per LF - up to 4" tall	10.75 LF	3.68	0.00	0.00	39.56
26. Tear out wet paneling, bag for disposal	43.00 SF	0.66	0.00	0.00	28.38
27. Tear out baseboard	10.75 LF	0.57	0.00	0.00	6.13
32. Contents - move out then reset	1.00 EA	0.00	71.75	0.00	71.75
Totals: 4th grade room				0.00	211.02

PAUL DAVIS RESTORATION - Lincoln
3641 S. 6th Street
Lincoln, NE 68502
Phone: (402) 474-1414
Fax: (402) 474-1467
Federal Tax Id #84-1691066



5th grade room

Height: 10'

1,084.39 SF Walls	809.01 SF Ceiling
1,893.40 SF Walls & Ceiling	809.01 SF Floor
89.89 SY Flooring	114.92 LF Floor Perimeter
114.92 LF Ceil. Perimeter	

Window

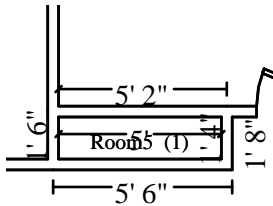
17' 8" X 3' 8"

Opens into Exterior

Door

3' X 6' 8"

Opens into Exterior



Subroom: Room5 (1)

Height: 10'

125.83 SF Walls	6.46 SF Ceiling
132.29 SF Walls & Ceiling	6.46 SF Floor
0.72 SY Flooring	12.58 LF Floor Perimeter
12.58 LF Ceil. Perimeter	

DESCRIPTION	QTY	REMOVE	REPLACE	TAX	TOTAL
7. Tear out wet non-salvageable glue down carpet, cut/bag	88.50 SF	1.13	0.00	0.00	100.01
33. Tear out wet drywall, cleanup, bag, per LF - up to 2' tall around window and rt bottom of exterior wall	56.42 LF	4.01	0.00	0.00	226.24
39. Tear out wet drywall, cleanup, bag, per LF - up to 4" tall	11.75 LF	3.68	0.00	0.00	43.24
34. Tear out wet paneling, bag for disposal	47.00 SF	0.66	0.00	0.00	31.02
35. Tear out baseboard	29.50 LF	0.57	0.00	0.00	16.82
36. Cabinet - lower (base) unit - Detach	12.00 LF	0.00	22.42	0.00	269.04
37. Countertop - flat laid plastic laminate - Detach	12.00 LF	0.00	7.31	0.00	87.72
38. Backsplash - flat laid/solid surface - Detach	14.00 LF	0.00	1.47	0.00	20.58
40. Contents - move out then reset - Large room	1.00 EA	0.00	107.50	0.00	107.50
43. Dehumidifier (per 24 hr period)- 110-159 ppd - No monitor.	6.93 EA	0.00	113.88	0.00	789.19
Totals: 5th grade room				0.00	1,691.36

Total: Main Level **0.00 5,427.60**

PAUL DAVIS RESTORATION - Lincoln
3641 S. 6th Street
Lincoln, NE 68502
Phone: (402) 474-1414
Fax: (402) 474-1467
Federal Tax Id #84-1691066

General

DESCRIPTION	QTY	REMOVE	REPLACE	TAX	TOTAL
1. Emergency service call - during business hours	1.00 EA	0.00	181.65	0.00	181.65
3. Equipment setup, take down, and monitoring (hourly charge)	5.50 HR	0.00	62.01	0.00	341.06
8. Haul debris - per pickup truck load - including dump fees	2.00 EA	159.23	0.00	0.00	318.46
Totals: General				0.00	841.17
Line Item Totals: LEWISTONSCHOOL_MIT				0.00	6,268.77

Grand Total Areas:

4,822.87 SF Walls	3,240.36 SF Ceiling	8,063.24 SF Walls and Ceiling
3,240.36 SF Floor	360.04 SY Flooring	505.63 LF Floor Perimeter
0.00 SF Long Wall	0.00 SF Short Wall	505.63 LF Ceil. Perimeter
3,240.36 Floor Area	3,376.86 Total Area	4,822.87 Interior Wall Area
3,161.94 Exterior Wall Area	308.67 Exterior Perimeter of Walls	
0.00 Surface Area	0.00 Number of Squares	0.00 Total Perimeter Length
0.00 Total Ridge Length	0.00 Total Hip Length	

PAUL DAVIS RESTORATION - Lincoln
3641 S. 6th Street
Lincoln, NE 68502
Phone: (402) 474-1414
Fax: (402) 474-1467
Federal Tax Id #84-1691066

Summary for Dwelling

Line Item Total	6,268.77
Replacement Cost Value	\$6,268.77
Net Claim	\$6,268.77

Brandon Palmer

PAUL DAVIS RESTORATION - Lincoln
3641 S. 6th Street
Lincoln, NE 68502
Phone: (402) 474-1414
Fax: (402) 474-1467
Federal Tax Id #84-1691066

Recap of Taxes

PAUL DAVIS RESTORATION - Lincoln
3641 S. 6th Street
Lincoln, NE 68502
Phone: (402) 474-1414
Fax: (402) 474-1467
Federal Tax Id #84-1691066

Recap by Room

Estimate: LEWISTONSCHOOL_MIT

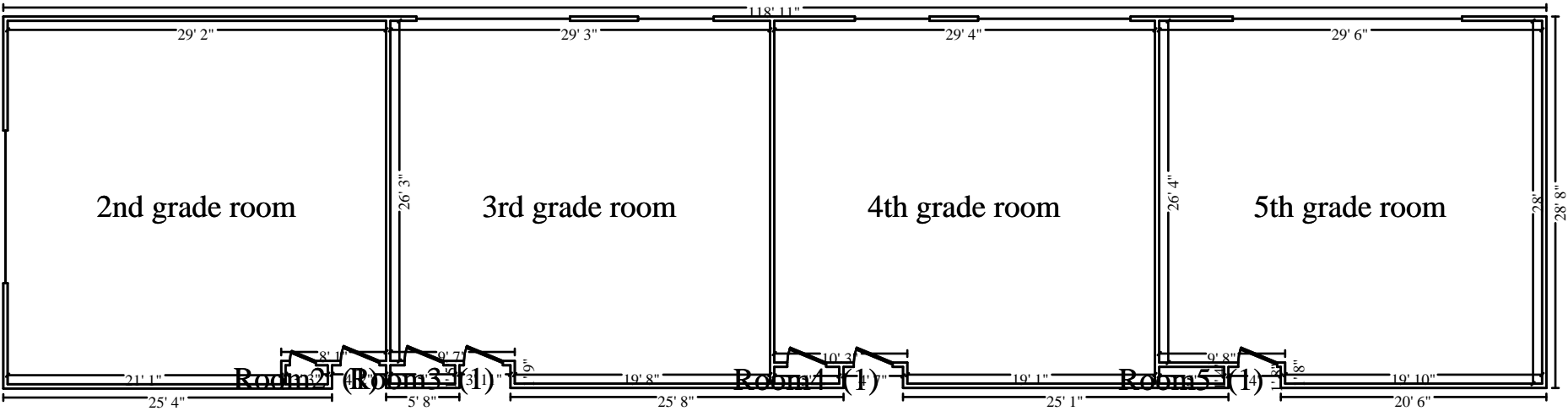
Area: Main Level

2nd grade room	1,616.47	25.79%
3rd grade room	1,908.75	30.45%
4th grade room	211.02	3.37%
5th grade room	1,691.36	26.98%
<hr/>		
Area Subtotal: Main Level	5,427.60	86.58%
General	841.17	13.42%
<hr/>		
Subtotal of Areas	6,268.77	100.00%
<hr/>		
Total	6,268.77	100.00%

PAUL DAVIS RESTORATION - Lincoln
3641 S. 6th Street
Lincoln, NE 68502
Phone: (402) 474-1414
Fax: (402) 474-1467
Federal Tax Id #84-1691066

Recap by Category

Items	Total	%
CONTENT MANIPULATION	394.25	6.29%
GENERAL DEMOLITION	1,852.22	29.55%
WATER EXTRACTION & REMEDIATION	4,022.30	64.16%
Subtotal	6,268.77	100.00%



Main Level

PAUL DAVIS RESTORATION - Lincoln
3641 S. 6th Street
Lincoln, NE 68502
Phone: (402) 474-1414
Fax: (402) 474-1467
Federal Tax Id #84-1691066

Insured: Lewiston Public Schools - repair
Property: 306 Tiger Ave
Lewiston, NE 68380

Home: (402) 643-1733

Claim Rep.: Brandon Palmer
Business: 3641 S 6th St.
Lincoln, NE 68502

Business: (402) 474-1414
E-mail: brandon.palmer@pauldavis.com

Estimator: Brandon Palmer
Business: 3641 S 6th St.
Lincoln, NE 68502

Business: (402) 474-1414
E-mail: brandon.palmer@pauldavis.com

Claim Number:

Policy Number:

Type of Loss:

Date of Loss:
Date Inspected:

Date Received:
Date Entered: 6/17/2026 3:42 PM

Price List: NELI8X_JUN26
Restoration/Service/Remodel
Estimate: LEWISTONSCHOOL_REP

It has been our pleasure to provide you with the following estimate, based off of criteria set forth by the Institute of Inspection Cleaning and Restoration Certification (IICRC www.iicrc.org) for the repairs to your structure due to your recent loss. If you should have any questions in regard to this estimate, please contact us at the number listed above.

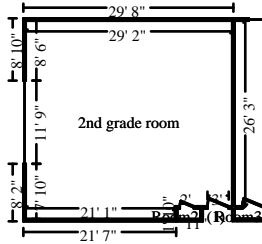
We specialize in restoration services for properties that have been damaged by water, fire, smoke, wind, tornadoes, vandalism, or other catastrophes. Our depth of experience and our commitment to quality service and workmanship mean that you can be confident about the work we perform. Our expert services include:

Water Damage Repair
Structural Drying
Mold Remediation and Prevention
Fire Damage Repair
Smoke Removal
Professional Cleaning and Deodorizing
Contents Cleaning, Inventory, Moving and Storage
Structural and Cosmetic Repairs
Emergency Board-Up and Structural Stabilization
Roofing
-Brandon Palmer

PAUL DAVIS RESTORATION - Lincoln
3641 S. 6th Street
Lincoln, NE 68502
Phone: (402) 474-1414
Fax: (402) 474-1467
Federal Tax Id #84-1691066

LEWISTONSCHOOL_REP

Main Level



2nd grade room

Height: 10'

1,102.21 SF Walls	802.18 SF Ceiling
1,904.39 SF Walls & Ceiling	802.18 SF Floor
89.13 SY Flooring	114.33 LF Floor Perimeter
114.33 LF Ceil. Perimeter	

Window

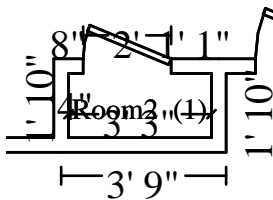
11' 9" X 3' 6"

Opens into Exterior

Door

3' X 6' 8"

Opens into Exterior



Subroom: Room2 (1)

Height: 10'

94.17 SF Walls	4.74 SF Ceiling
98.91 SF Walls & Ceiling	4.74 SF Floor
0.53 SY Flooring	9.42 LF Floor Perimeter
9.42 LF Ceil. Perimeter	

Door

2' X 6' 8"

Opens into DEF_2ND_GRAD

DESCRIPTION	QTY	RESET	REMOVE	REPLACE	TAX	O&P	TOTAL
-------------	-----	-------	--------	---------	-----	-----	-------

Abatement:

52. Tear out asbestos vinyl floor covering (no haul off)	806.92 SF		3.30	0.00	0.00	532.56	3,195.40
53. Remove asbestos floor mastic (no haul off)	806.92 SF		4.08	0.00	0.00	658.44	3,950.67
54. HEPA Vacuuming - Detailed - (PER SF)	806.92 SF		0.00	0.89	0.00	143.64	861.80
55. Tear out wet non-salvageable glue down carpet, cut/bag	719.00 SF		1.13	0.00	0.00	162.50	974.97

Repairs:

Flooring:

69. Glue down carpet	884.83 SF		0.00	2.50	0.00	442.42	2,654.50
75. R&R Vinyl reducer strip - for carpet entry door	3.00 LF		0.44	3.86	0.00	2.58	15.48
71. Floor preparation for resilient flooring	806.92 SF		0.00	0.52	0.00	83.92	503.52

this is due to the asbestos tile. Not sure if might need leveler put down?

PAUL DAVIS RESTORATION - Lincoln
3641 S. 6th Street
Lincoln, NE 68502
Phone: (402) 474-1414
Fax: (402) 474-1467
Federal Tax Id #84-1691066

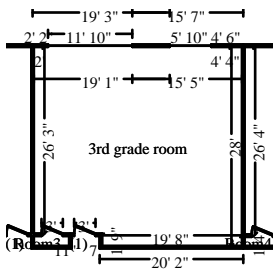
CONTINUED - 2nd grade room

DESCRIPTION	QTY	RESET	REMOVE	REPLACE	TAX	O&P	TOTAL
Baseboards:							
73. Remove Cove base molding - rubber or vinyl, 6" high	94.58 LF		0.34	0.00	0.00	6.44	38.60
74. Cove base molding - rubber or vinyl, 6" high	123.75 LF		0.00	3.16	0.00	78.22	469.27
Walls:							
76. Remove 1/2" drywall - hung, taped, floated, ready for paint remaining drywall on west exterior wall.	236.67 SF		0.47	0.00	0.00	22.24	133.47
175. 1/2" drywall - hung, taped, floated, ready for paint	295.00 SF		0.00	3.24	0.00	191.16	1,146.96
78. Tape joint for new to existing drywall - per LF corners of this wall	20.00 LF		0.00	8.67	0.00	34.68	208.08
79. Seal/prime (1 coat) then paint (2 coats) the surface area west exterior wall only	295.00 SF		0.00	1.40	0.00	82.60	495.60
81. Batt insulation - 10" - R30 - paper / foil faced	295.00 SF		0.00	1.74	0.00	102.66	615.96
This is west exterior wall and would be an ADD ON if school wants it.							
Cabinets:							
84. Cabinetry - lower (base) units west wall	12.00 LF		0.00	251.21	0.00	602.90	3,617.42
88. R&R Cabinetry - lower (base) units north wall	9.00 LF		8.48	251.21	0.00	467.44	2,804.65
86. R&R Countertop - flat laid plastic laminate	42.00 LF		4.87	43.38	0.00	405.30	2,431.80
87. R&R Cabinetry - upper (wall) units	6.00 LF		8.48	164.41	0.00	207.48	1,244.82
89. 6" backsplash for flat laid countertop	12.00 LF		0.00	11.57	0.00	27.76	166.60
90. R&R 6" backsplash for flat laid countertop	9.00 LF		1.02	11.57	0.00	22.66	135.97
91. Detach & Reset Cabinet knob or pull	5.00 EA	2.40	0.00	0.00	0.00	2.40	14.40
Ceiling:							
92. Suspended ceiling grid - Reset/realign	29.17 SF		0.00	2.04	0.00	11.90	71.41

PAUL DAVIS RESTORATION - Lincoln
3641 S. 6th Street
Lincoln, NE 68502
Phone: (402) 474-1414
Fax: (402) 474-1467
Federal Tax Id #84-1691066

CONTINUED - 2nd grade room

DESCRIPTION	QTY	RESET	REMOVE	REPLACE	TAX	O&P	TOTAL
Agreed to try and remove track that is mounted on west/exterior wall to get drywall removed and replaced behind it. School is aware this will not match with existing and fine with this.							
94. Acoustical Treatments Installer - per hour	1.50 HR		0.00	114.66	0.00	34.40	206.39
additional time to disconnect supports running east and west and protect this grid.							
95. R&R Suspended ceiling tile - 2' x 4'	96.00 SF		0.23	2.49	0.00	52.22	313.34
School is aware that new tiles will not match with existing and are fine with this.							
98. Belly paper (underbelly material)	116.67 SF		0.00	1.10	0.00	25.66	154.00
99. Batt insulation - 4" - R13 - unfaced batt	116.67 SF		0.00	0.85	0.00	19.84	119.01
Windows:							
125. R&R Vinyl window - double hung, 20-28 sf - High grade	1.00 EA		25.51	742.03	0.00	153.50	921.04
126. Add. charge for a retrofit window, 24-40 sf - difficult	1.00 EA		0.00	307.44	0.00	61.48	368.92
Totals: 2nd grade room					0.00	4,639.00	27,834.05

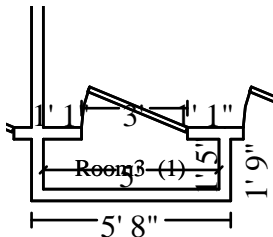


3rd grade room

Height: 10'

1,079.39 SF Walls	801.01 SF Ceiling
1,880.40 SF Walls & Ceiling	801.01 SF Floor
89.00 SY Flooring	114.42 LF Floor Perimeter
114.42 LF Ceil. Perimeter	

Window	11' 10" X 3' 8"	Opens into Exterior
Window	5' 10" X 3' 8"	Opens into Exterior
Door	3' X 6' 8"	Opens into Exterior



Subroom: Room3 (1)

Height: 10'

127.89 SF Walls	7.05 SF Ceiling
134.95 SF Walls & Ceiling	7.05 SF Floor
0.78 SY Flooring	12.79 LF Floor Perimeter
12.79 LF Ceil. Perimeter	

Door	3' X 6' 8"	Opens into DEF_3RD_GRAD
-------------	-------------------	--------------------------------

PAUL DAVIS RESTORATION - Lincoln
3641 S. 6th Street
Lincoln, NE 68502
Phone: (402) 474-1414
Fax: (402) 474-1467
Federal Tax Id #84-1691066

CONTINUED - 3rd grade room

DESCRIPTION	QTY	RESET	REMOVE	REPLACE	TAX	O&P	TOTAL
Abatement:							
57. Tear out asbestos vinyl floor covering (no haul off)	808.06 SF		3.30	0.00	0.00	533.32	3,199.92
58. Remove asbestos floor mastic (no haul off)	808.06 SF		4.08	0.00	0.00	659.38	3,956.26
59. HEPA Vacuuming - Detailed - (PER SF)	808.06 SF		0.00	0.89	0.00	143.84	863.01
60. Tear out wet non-salvageable glue down carpet, cut/bag	604.00 SF		1.13	0.00	0.00	136.50	819.02
Repairs:							
Flooring:							
120. Glue down carpet	886.33 SF		0.00	2.50	0.00	443.16	2,658.99
100. R&R Vinyl reducer strip - for entry door	3.00 LF		0.44	3.86	0.00	2.58	15.48
101. Floor preparation for resilient flooring this is due to the asbestos tile. Not sure if might need leveler put down?	808.06 SF		0.00	0.52	0.00	84.04	504.23
Baseboards:							
102. Remove Cove base molding - rubber or vinyl, 6" high	97.96 LF		0.34	0.00	0.00	6.66	39.97
103. Cove base molding - rubber or vinyl, 6" high	127.21 LF		0.00	3.16	0.00	80.40	482.38
Walls:							
104. Remove 1/2" drywall - hung, taped, floated, ready for paint remaining drywall on west exterior wall.	114.06 SF		0.47	0.00	0.00	10.72	64.33
176. 1/2" drywall - hung, taped, floated, ready for paint	231.06 SF		0.00	3.24	0.00	149.72	898.35
105. Tape joint for new to existing drywall - per LF corners of this wall	20.00 LF		0.00	8.67	0.00	34.68	208.08
106. Seal/prime (1 coat) then paint (2 coats) the surface area west exterior wall only	231.06 SF		0.00	1.40	0.00	64.70	388.18
107. Batt insulation - 10" - R30 - paper / foil faced	231.06 SF		0.00	1.74	0.00	80.40	482.44

This is west exterior wall and would be an ADD ON if school wants it.

Cabinets:

PAUL DAVIS RESTORATION - Lincoln
3641 S. 6th Street
Lincoln, NE 68502
Phone: (402) 474-1414
Fax: (402) 474-1467
Federal Tax Id #84-1691066

CONTINUED - 3rd grade room

DESCRIPTION	QTY	RESET	REMOVE	REPLACE	TAX	O&P	TOTAL
108. Cabinetry - lower (base) units west wall	12.00 LF		0.00	251.21	0.00	602.90	3,617.42
109. R&R Cabinetry - lower (base) units north wall	10.50 LF		8.48	251.21	0.00	545.34	3,272.09
110. R&R Countertop - flat laid plastic laminate	45.00 LF		4.87	43.38	0.00	434.26	2,605.51
111. R&R Cabinetry - upper (wall) units	6.00 LF		8.48	164.41	0.00	207.48	1,244.82
112. 6" backsplash for flat laid countertop	12.00 LF		0.00	11.57	0.00	27.76	166.60
113. R&R 6" backsplash for flat laid countertop	10.50 LF		1.02	11.57	0.00	26.44	158.64
114. Detach & Reset Cabinet knob or pull	3.00 EA	2.40	0.00	0.00	0.00	1.44	8.64
Ceiling:							
115. Suspended ceiling grid - Reset/realign	29.25 SF		0.00	2.04	0.00	11.94	71.61
Agreed to try and remove track that is mounted on west/exterior wall to get drywall removed and replaced behind it. School is aware this will not match with existing and fine with this.							
116. Acoustical Treatments Installer - per hour additional time to disconnect supports running east and west and protect this grid.	1.50 HR		0.00	114.66	0.00	34.40	206.39
117. R&R Suspended ceiling tile - 2' x 4' School is aware that new tiles will not match with existing and are fine with this.	128.00 SF		0.23	2.49	0.00	69.62	417.78
118. Belly paper (underbelly material)	117.00 SF		0.00	1.10	0.00	25.74	154.44
119. Batt insulation - 4" - R13 - unfaced batt	117.00 SF		0.00	0.85	0.00	19.90	119.35
Windows:							
123. R&R Vinyl window - double hung, 20-28 sf - High grade	3.00 EA		25.51	742.03	0.00	460.52	2,763.14
124. Add. charge for a retrofit window, 24-40 sf - difficult	3.00 EA		0.00	307.44	0.00	184.46	1,106.78
Totals: 3rd grade room					0.00	5,082.30	30,493.85

PAUL DAVIS RESTORATION - Lincoln
3641 S. 6th Street
Lincoln, NE 68502
Phone: (402) 474-1414
Fax: (402) 474-1467
Federal Tax Id #84-1691066

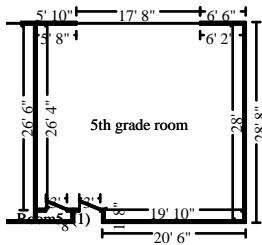
CONTINUED - 4th grade room

DESCRIPTION	QTY	RESET	REMOVE	REPLACE	TAX	O&P	TOTAL
130. Cove base molding - rubber or vinyl, 6" high	127.17 LF		0.00	3.16	0.00	80.38	482.24
Walls:							
131. 1/2" drywall - hung, taped, floated, ready for paint remaining drywall on west exterior wall.	233.96 SF		0.00	3.24	0.00	151.60	909.63
150. Remove 1/2" drywall - hung, taped, floated, ready for paint	212.46 SF		0.47	0.00	0.00	19.98	119.84
132. Tape joint for new to existing drywall - per LF corners of this wall	20.00 LF		0.00	8.67	0.00	34.68	208.08
133. Seal/prime (1 coat) then paint (2 coats) the surface area west exterior wall only	233.96 SF		0.00	1.40	0.00	65.50	393.04
134. Batt insulation - 10" - R30 - paper / foil faced	233.96 SF		0.00	1.74	0.00	81.42	488.51
This is west exterior wall and would be an ADD ON if school wants it.							
Cabinets:							
136. R&R Cabinetry - lower (base) units north wall	21.00 LF		8.48	251.21	0.00	1,090.70	6,544.19
137. R&R Countertop - flat laid plastic laminate	42.00 LF		4.87	43.38	0.00	405.30	2,431.80
138. R&R Cabinetry - upper (wall) units	6.00 LF		8.48	164.41	0.00	207.48	1,244.82
140. R&R 6" backsplash for flat laid countertop	24.00 LF		1.02	11.57	0.00	60.44	362.60
141. Detach & Reset Cabinet knob or pull	6.00 EA	2.40	0.00	0.00	0.00	2.88	17.28
Ceiling:							
142. Suspended ceiling grid - Reset/realign	29.25 SF		0.00	2.04	0.00	11.94	71.61
Agreed to try and remove track that is mounted on west/exterior wall to get drywall removed and replaced behind it. School is aware this will not match with existing and fine with this.							
143. Acoustical Treatments Installer - per hour additional time to disconnect supports running east and west and protect this grid.	1.50 HR		0.00	114.66	0.00	34.40	206.39
144. R&R Suspended ceiling tile - 2' x 4'	48.00 SF		0.23	2.49	0.00	26.10	156.66
School is aware that new tiles will not match with existing and are fine with this.							

PAUL DAVIS RESTORATION - Lincoln
3641 S. 6th Street
Lincoln, NE 68502
Phone: (402) 474-1414
Fax: (402) 474-1467
Federal Tax Id #84-1691066

CONTINUED - 4th grade room

DESCRIPTION	QTY	RESET	REMOVE	REPLACE	TAX	O&P	TOTAL
Windows:							
147. R&R Vinyl window - double hung, 20-28 sf - High grade	3.00 EA		25.51	742.03	0.00	460.52	2,763.14
148. Add. charge for a retrofit window, 24-40 sf - difficult	3.00 EA		0.00	307.44	0.00	184.46	1,106.78
Totals: 4th grade room					0.00	4,975.54	29,853.09



5th grade room

Height: 10'

1,084.39 SF Walls	809.01 SF Ceiling
1,893.40 SF Walls & Ceiling	809.01 SF Floor
89.89 SY Flooring	114.92 LF Floor Perimeter
114.92 LF Ceil. Perimeter	

Window

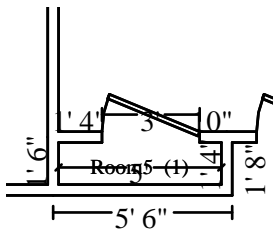
17' 8" X 3' 8"

Opens into Exterior

Door

3' X 6' 8"

Opens into Exterior



Subroom: Room5 (1)

Height: 10'

125.83 SF Walls	6.46 SF Ceiling
132.29 SF Walls & Ceiling	6.46 SF Floor
0.72 SY Flooring	12.58 LF Floor Perimeter
12.58 LF Ceil. Perimeter	

Door

3' X 6' 8"

Opens into DEF_5TH_GRAD

DESCRIPTION	QTY	RESET	REMOVE	REPLACE	TAX	O&P	TOTAL
Abatement:							
65. Tear out asbestos vinyl floor covering (no haul off)	815.46 SF		3.30	0.00	0.00	538.20	3,229.22
66. Remove asbestos floor mastic (no haul off)	815.46 SF		4.08	0.00	0.00	665.42	3,992.50
67. HEPA Vacuuming - Detailed - (PER SF)	815.46 SF		0.00	0.89	0.00	145.16	870.92
68. Tear out wet non-salvageable glue down carpet, cut/bag	719.00 SF		1.13	0.00	0.00	162.50	974.97

Flooring:

PAUL DAVIS RESTORATION - Lincoln
3641 S. 6th Street
Lincoln, NE 68502
Phone: (402) 474-1414
Fax: (402) 474-1467
Federal Tax Id #84-1691066

CONTINUED - 5th grade room

DESCRIPTION	QTY	RESET	REMOVE	REPLACE	TAX	O&P	TOTAL
174. Glue down carpet	893.92 SF		0.00	2.50	0.00	446.96	2,681.76
152. R&R Vinyl reducer strip - for carpet entry door	3.00 LF		0.44	3.86	0.00	2.58	15.48
153. Floor preparation for resilient flooring this is due to the asbestos tile. Not sure if might need leveler put down?	815.46 SF		0.00	0.52	0.00	84.80	508.84
Baseboards:							
154. Remove Cove base molding - rubber or vinyl, 6" high	98.00 LF		0.34	0.00	0.00	6.66	39.98
155. Cove base molding - rubber or vinyl, 6" high	127.50 LF		0.00	3.16	0.00	80.58	483.48
Walls:							
156. Remove 1/2" drywall - hung, taped, floated, ready for paint remaining drywall on west exterior wall.	167.72 SF		0.47	0.00	0.00	15.76	94.59
177. 1/2" drywall - hung, taped, floated, ready for paint	233.56 SF		0.00	3.24	0.00	151.34	908.07
157. Tape joint for new to existing drywall - per LF corners of this wall	20.00 LF		0.00	8.67	0.00	34.68	208.08
158. Seal/prime (1 coat) then paint (2 coats) the surface area west exterior wall only	233.56 SF		0.00	1.40	0.00	65.40	392.38
159. Batt insulation - 10" - R30 - paper / foil faced	233.56 SF		0.00	1.74	0.00	81.28	487.67
This is west exterior wall and would be an ADD ON if school wants it.							
Cabinets:							
160. Cabinetry - lower (base) units west wall	12.00 LF		0.00	251.21	0.00	602.90	3,617.42
161. R&R Cabinetry - lower (base) units north wall	10.50 LF		8.48	251.21	0.00	545.34	3,272.09
162. R&R Countertop - flat laid plastic laminate	45.00 LF		4.87	43.38	0.00	434.26	2,605.51
163. R&R Cabinetry - upper (wall) units	6.00 LF		8.48	164.41	0.00	207.48	1,244.82
164. 6" backsplash for flat laid countertop	12.00 LF		0.00	11.57	0.00	27.76	166.60

PAUL DAVIS RESTORATION - Lincoln
3641 S. 6th Street
Lincoln, NE 68502
Phone: (402) 474-1414
Fax: (402) 474-1467
Federal Tax Id #84-1691066

CONTINUED - 5th grade room

DESCRIPTION	QTY	RESET	REMOVE	REPLACE	TAX	O&P	TOTAL
165. R&R 6" backsplash for flat laid countertop	10.50 LF		1.02	11.57	0.00	26.44	158.64
166. Detach & Reset Cabinet knob or pull	6.00 EA	2.40	0.00	0.00	0.00	2.88	17.28
Ceiling:							
167. Suspended ceiling grid - Reset/realign	29.25 SF		0.00	2.04	0.00	11.94	71.61
Agreed to try and remove track that is mounted on west/exterior wall to get drywall removed and replaced behind it. School is aware this will not match with existing and fine with this.							
168. Acoustical Treatments Installer - per hour	1.50 HR		0.00	114.66	0.00	34.40	206.39
additional time to disconnect supports running east and west and protect this grid.							
169. R&R Suspended ceiling tile - 2' x 4'	128.00 SF		0.23	2.49	0.00	69.62	417.78
School is aware that new tiles will not match with existing and are fine with this.							
170. Belly paper (underbelly material)	117.00 SF		0.00	1.10	0.00	25.74	154.44
171. Batt insulation - 4" - R13 - unfaced batt	117.00 SF		0.00	0.85	0.00	19.90	119.35
Windows:							
172. R&R Vinyl window - double hung, 20-28 sf - High grade	3.00 EA		25.51	742.03	0.00	460.52	2,763.14
Due to size of this window had to use 3 of these.							
173. Add. charge for a retrofit window, 24-40 sf - difficult	3.00 EA		0.00	307.44	0.00	184.46	1,106.78
Totals: 5th grade room					0.00	5,134.96	30,809.79
Total: Main Level					0.00	19,831.80	118,990.78

General

DESCRIPTION	QTY	RESET	REMOVE	REPLACE	TAX	O&P	TOTAL
41. Dumpster load - Approx. 20 yards, 4 tons of debris	1.00 EA		460.00	0.00	0.00	92.00	552.00
Totals: General					0.00	92.00	552.00

Abatement

PAUL DAVIS RESTORATION - Lincoln
3641 S. 6th Street
Lincoln, NE 68502
Phone: (402) 474-1414
Fax: (402) 474-1467
Federal Tax Id #84-1691066

CONTINUED - Abatement

DESCRIPTION	QTY	RESET	REMOVE	REPLACE	TAX	O&P	TOTAL
42. Containment Barrier/Airlock/Decon. Chamber	352.00 SF		0.00	1.13	0.00	79.56	477.32
44. Peel & seal zipper	2.00 EA		0.00	14.69	0.00	5.88	35.26
45. Add for personal protective equipment - Heavy duty	9.00 EA		0.00	49.61	0.00	89.30	535.79
47. Plastic dumpster liner - 40 yard	1.00 EA		0.00	80.25	0.00	16.06	96.31
48. Dumpster load - Approx. 40 yards, 7-8 tons of debris	1.00 EA		640.00	0.00	0.00	128.00	768.00
49. Haul debris - per pickup truck load - including dump fees	2.00 EA		159.23	0.00	0.00	63.70	382.16
This is for the glue down carpet that is left in the rooms							
50. Axial fan air mover - 1 HP (per 24 hr period)-No monit. fans to sit in the windows to help with air flow.	36.00 EA		0.00	38.00	0.00	273.60	1,641.60
51. Equipment setup, take down, and monitoring (hourly charge)	3.00 HR		0.00	70.37	0.00	42.22	253.33
Totals: Abatement					0.00	698.32	4,189.77
Line Item Totals: LEWISTONSCHOOL_REP					0.00	20,622.12	123,732.55

Grand Total Areas:

4,822.87 SF Walls	3,240.36 SF Ceiling	8,063.24 SF Walls and Ceiling
3,240.36 SF Floor	360.04 SY Flooring	505.63 LF Floor Perimeter
0.00 SF Long Wall	0.00 SF Short Wall	505.63 LF Ceil. Perimeter
3,240.36 Floor Area	3,376.86 Total Area	4,822.87 Interior Wall Area
3,161.94 Exterior Wall Area	308.67 Exterior Perimeter of Walls	
0.00 Surface Area	0.00 Number of Squares	0.00 Total Perimeter Length
0.00 Total Ridge Length	0.00 Total Hip Length	

PAUL DAVIS RESTORATION - Lincoln
3641 S. 6th Street
Lincoln, NE 68502
Phone: (402) 474-1414
Fax: (402) 474-1467
Federal Tax Id #84-1691066

Summary for Dwelling

Line Item Total	103,110.43
Overhead	10,311.06
Profit	10,311.06
Replacement Cost Value	\$123,732.55
Net Claim	\$123,732.55

Brandon Palmer

PAUL DAVIS RESTORATION - Lincoln
3641 S. 6th Street
Lincoln, NE 68502
Phone: (402) 474-1414
Fax: (402) 474-1467
Federal Tax Id #84-1691066

Recap of Taxes, Overhead and Profit

	Overhead (10%)	Profit (10%)
Line Items	10,311.06	10,311.06
Total	10,311.06	10,311.06

PAUL DAVIS RESTORATION - Lincoln
3641 S. 6th Street
Lincoln, NE 68502
Phone: (402) 474-1414
Fax: (402) 474-1467
Federal Tax Id #84-1691066

Recap by Room

Estimate: LEWISTONSCHOOL_REP

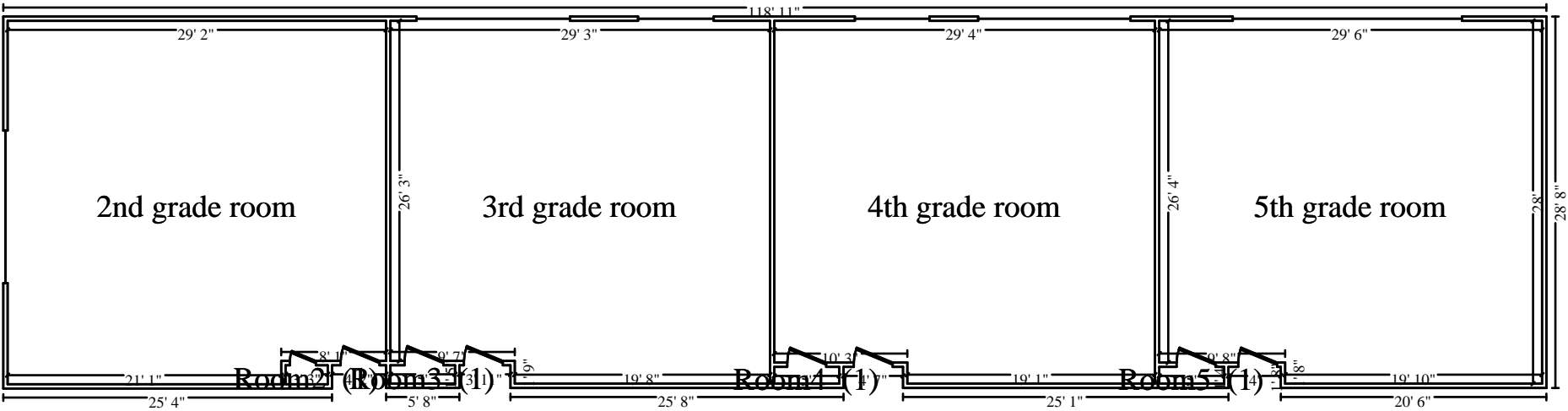
Area: Main Level

2nd grade room	23,195.05	22.50%
3rd grade room	25,411.55	24.64%
4th grade room	24,877.55	24.13%
5th grade room	25,674.83	24.90%
<hr/>		
Area Subtotal: Main Level	99,158.98	96.17%
General	460.00	0.45%
Abatement	3,491.45	3.39%
<hr/>		
Subtotal of Areas	103,110.43	100.00%
<hr/>		
Total	103,110.43	100.00%

PAUL DAVIS RESTORATION - Lincoln
3641 S. 6th Street
Lincoln, NE 68502
Phone: (402) 474-1414
Fax: (402) 474-1467
Federal Tax Id #84-1691066

Recap by Category

O&P Items	Total	%
ACOUSTICAL TREATMENTS	1,922.48	1.55%
CABINETRY	34,438.55	27.83%
GENERAL DEMOLITION	30,908.53	24.98%
DRYWALL	3,912.79	3.16%
FLOOR COVERING - CARPET	8,930.08	7.22%
FLOOR COVERING - VINYL	3,282.77	2.65%
HAZARDOUS MATERIAL REMEDIATION	4,048.90	3.27%
INSULATION	2,412.63	1.95%
PAINTING	1,391.00	1.12%
WINDOWS - VINYL	10,494.70	8.48%
WATER EXTRACTION & REMEDIATION	1,368.00	1.11%
O&P Items Subtotal	103,110.43	83.33%
Overhead	10,311.06	8.33%
Profit	10,311.06	8.33%
Total	123,732.55	100.00%



Main Level

Current Year Custodial Staff Expenses

Name	Amount	Description
Mark Rinne	\$ 54,496.00	no Ins
Joe Cox	\$ 77,813.00	Ins+ child
Mitch Clements	\$ 65,000.00	no Ins
LeAnn Baker	\$ 39,455.00	Single Ins
	<u>\$ 236,764.00</u>	

Projected Year Custodial Staff Expense

Name	Amount	Description
Mark Rinne	\$ 68,641.00	Single Insurance
Joe Cox	\$ 75,264.00	Insurance Coverage Changed
Mitch Clements	\$ 80,362.00	Single Insurance
Norton Rinne	\$ 41,518.00	Proposed w/ Insurance Emp/Spouse
	<u>\$ 265,785.00</u>	

Mitch Clements

\$ 60,000.00	per year
\$ 4,800.00	Retirement
\$ 4,590.00	Social Security
\$ 10,408.00	Health
\$ 408.00	Dental
\$ 156.00	LTD
<u>\$ 80,362.00</u>	

Norton Rinne

\$16.00	per Hour	\$16.00per hour X 20 hrs per week X 52weeks
\$16,640.00	per year	
\$1,331.00	Retirement	
\$1,273.00	Social Security	
\$21,823.00	Health	
\$408.00	Dental	
\$43.00	LTD	
<u>\$41,518</u>		