

## **Agenda**

1. MEETING CALL TO ORDER
  1. Reading of Public Meeting Notice
    1. Open Meetings Act
  2. Roll Call
  3. Consent Agenda
    1. Additions/Deletions and Agenda Approval
    2. Consider Minutes of Previous Meeting(s) and Their Approval
    3. Consider Current Bills and Their Approval
    4. Consider Activity Accounts and Treasurer's Report
    5. Excuse Board Member's Absences
  4. Introduction of Guests; Invite Comments
2. OLD BUSINESS
3. NEW BUSINESS
  1. DISCUSS AND CONSIDER REPLACING THE JOHN DEERE LAWN MOWER , TRACTOR, AND LOADER
  2. DISCUSSION ON CONSTRUCTION PROCESS
  3. CONSIDER APPROVAL OF PROPOSED CHANGES TO THE PARENTAL INVOLVEMENT POLICY OR REAFFIRM IN ITS PRESENT FORM
  4. CONSIDER APPROVAL OF PROPOSED CHANGES TO THE STUDENT FEE POLICY OR REAFFIRM IN ITS PRESENT FORM
  5. CONSIDER APPROVAL OF MILK BIDS FOR THE 2013-14 SCHOOL YEAR
  6. CONSIDER APPROVAL OF FUEL BIDS FOR THE 2013-14 SCHOOL YEAR
  7. CONSIDER APPOINTMENT OF SCHOOL ATTORNEY
  8. CONSIDER APPROVAL OF AN EXPENDITURE EXCLUSION UP TO AN AMOUNT EQUAL TO 2% OF THE 2012/13 CERTIFIED GENERAL FUND BUDGET AUTHORITY
  9. CONSIDER APPROVAL OF INTERLOCAL AGREEMENT FOR AG ACADEMY
  10. CONSIDER APPROVAL FOR WATERPROOFING THE BUS BARN ROOF
  11. NOMINATION OF NASB REGION 10 DIRECTOR
  12. CONSIDER PAID HOLIDAYS FOR PARAPROFESSIONALS
  13. BUDGET REVIEW
  14. BOARD MEMBER REPORTS
  15. SUPERINTENDENT'S REPORT
4. ADJOURN

# CENTENNIAL PUBLIC SCHOOL

1301 Centennial Avenue  
P.O. Box 187  
Utica, NE 68456-0187  
402-534-2321  
FAX 402-534-2291

Tim DeWaard  
Superintendent  
402-534-2291

Colin Bargaen  
Secondary Principal

Dean Davis  
Activities Director

Mark Murphy  
Elementary Principal

Bob Fish  
Counselor

Barbara Heckathorn  
Special Services

## CENTENNIAL BOARD OF EDUCATION REGULAR MEETING June 10, 2013

Notice of meeting was published in York News Times on May 30, 2013.

Meeting was called to order at 8:00 p.m. with five board members present. Mark Avery was absent. Administrators present were Mr. DeWaard, Mr. Murphy and Mr. Bargaen.

In lieu of dissent, the consent agenda was approved as presented.

Motion made by Tonniges, seconded by Heine, to approve the 2013-14 Athletic Budget. Members polled: Avery, absent; Cast, for; Heine, for; Paxson, for; Sorensen, for; Tonniges, for. Motion carried 5-0.

Information of the Gifted Program was shared by Mr. Murphy.

Motion made by Sorensen, seconded by Cast, to approve the changes to the teacher handbooks. Members polled: Avery, absent, Cast, for; Heine, for; Paxson, for; Sorensen, for; Tonniges, for. Motion carried 5-0.

Motion made by Heine, seconded by Tonniges, to approve the elementary and secondary student handbooks. Members polled: Avery, absent, Cast, for; Heine, for; Paxson, for; Sorensen, for; Tonniges, for. Motion carried 5-0.

Motion made by Heine, seconded by Sorensen, to approve the application for fiscal year 2013-14 Title I funds. Members polled: Avery, absent, Cast, for; Heine, for; Paxson, for; Sorensen, for; Tonniges, for. Motion carried 5-0.

Motion made by Heine, seconded by Tonniges, to continue the same limits for option enrollment purposes. Members polled: Avery, absent Cast, for; Heine, for; Paxson, for; Sorensen, for; Tonniges, for. Motion carried 5-0.

Motion made by Heine, seconded by Cast, to approve the Interlocal Agreement with David City Public Schools. Members polled: Avery, absent; Cast, for; Heine, for; Paxson, for; Sorensen, for; Tonniges, for. Motion carried 5-0.

Motion made by Sorensen, seconded by Heine, to approve new hires. Members polled: Avery, absent; Cast, for; Heine, for; Paxson, for; Sorensen, for; Tonniges, for. Motion carried 5-0.

Motion made by Sorensen, seconded by Tonniges, to approve the proposal to replace the bus cameras. Members polled: Avery, absent, Cast, for; Heine, for; Paxson, for; Sorensen, for; Tonniges, for. Motion carried 5-0.

Motion made by Sorensen, seconded by Heine, to amend the motion from: Motion to approve using \_\_\_\_\_ as the depository for the bond funds” to motion to allow the finance committee and Superintendent to determine where to deposit the bond funds. Members polled: Avery, absent; Cast, for; Heine, for; Paxson, for; Sorensen, for; Tonniges, for. Motion carried 5-0.

Motion made by Sorensen, seconded by Heine, to allow the finance committee and Superintendent to determine where to deposit the bond funds. Members polled: Avery, absent; Cast, for; Heine, for; Paxson, for; Sorensen, for; Tonniges, for. Motion carried 5-0.

Heard building addition plans from Mr. DeWaard.

Motion made by Cast, seconded by Tonniges, to change the July Board of Education meeting to July 11<sup>th</sup>. Members polled: Avery, absent; Cast, for; Heine, for; Paxson, for; Sorensen, for; Tonniges, for. Motion carried 5-0.

Held discussion on budget process.

Heard Administrator reports.

Motion made by Tonniges, seconded by Cast, to approve a 4% increase of pay for 2013-2014 school year for non-certified and miscellaneous salaried employees. Increase PreSchool transportation to \$40.00. Add 5 paid holidays for kitchen staff. Members polled: Avery, absent; Cast, for; Heine, for; Paxson, for; Sorensen, for; Tonniges, for. Motion carried 5-0.

Motion made by Heine, seconded by Tonniges to approve an increase of 4% total package for Colin Bargaen, Dan Tesar, and Tim DeWaard for 2013-2014 school year. Members polled: Avery, absent, Cast, for; Heine, for; Paxson, for; Sorensen, for; Tonniges, for. Motion carried 5-0.

Meeting adjourned at 11:30 p.m.

Julie Sorensen, Secretary  
Centennial Board of Education

JS:mr

# CENTENNIAL PUBLIC SCHOOL

1301 Centennial Avenue  
P.O. Box 187  
Utica, NE 68456-0187  
402-534-2321  
FAX 402-534-2291

Tim DeWaard  
Superintendent  
402-534-2291

Colin Bargaen  
Secondary Principal

Dean Davis  
Activities Director

Mark Murphy  
Elementary Principal

Bob Fish  
Counselor

Barbara Heckathorn  
Special Services

## CENTENNIAL BOARD OF EDUCATION Special Meeting June 18, 2013

Notice of special meeting was published in York News Times on June 13, 2013.

Meeting was called to order at 6:30 p.m. with all board members present.  
Administrator present was Mr. DeWaard. Guests were Cleve Reeves and Justin Kurtzer.

The purpose of this meeting was to reaffirm the goals set by the board.

Meeting adjourned at 10:50 p.m.

Julie Sorensen, Secretary  
Centennial Board of Education

JS:mr

**Board Report for Newspaper**

JULY 2013

<u>Vendor Name</u>	<u>Vendor Description</u>	<u>Amount</u>
AMAZON.COM	TEXTBOOKS	884.52
AUTO VALUE PARTS STORES	PARTS/SUPPLIES	2,708.08
AWARDS UNLIMITED	SUPPLIES	23.85
BARJENBRUCH, CRAIG	REIMBURSEMENT	229.44
BEAVER HARDWARE	PARTS	614.67
CAPITOL ONE COMMERCIAL	SUPPLIES	72.90
CCS PRESENTATION SYSTEMS	COMP HARDWARE	8,451.90
CENTRAL NEBRASKA REHABILITATION SERVICES	PHYSICAL THERAPY	12,286.80
CENTRAL STATES HYDRAULIC SERVICES, INC	EQUIPMENT	5,542.00
CHARLIE'S USAVE PHARMACY	SUPPLIES	34.99
CORNHUSKER CLEANING SYSTEMS, INC	TIRES/PARTS	53.20
CROSS DILLON TIRE	EQUIPMENT	126.15
CULLIGAN OF CRETE	SUPPLIES	81.95
CUMMINS CENTRAL POWER, LLC	PARTS	92.70
DAVID CITY PUBLIC SCHOOLS	PSYCH SERVICES	4,103.68
EDUCATIONAL SERVICE UNIT #4	WORKSHOP	300.00
EDUCATIONAL SERVICE UNIT #7	REGISTRATION FEE	250.00
EDUCATIONAL SERVICE UNIT 2,	TRAINING	925.00
ELECTRICAL ENGINEERING & EQUIPMENT	SUPPLIES	349.90
ESU #6	CONTRACTED SERVICES/SUPPLIES	6,362.43
EVERWHITE	EQUIPMENT	1,756.00
FATHER FLANAGAN'S BOYS HOME	CONTRACT SERVICES	1,615.25
FILTER CARE OF NEBRASKA	SUPPLIES	21.45
FRIEDRICHSEN, TINA	REIMBURSEMENT	49.72
GENERAL FIRE-SAFETY	ALARM INSPECTION	1,090.20
GLASS DOCTOR - LINCOLN	REPAIRS	165.00
GOVCONNECTION, INC	COMPUTER EQUIPMENT	23,571.36
HAMMER, MEGAN	REIMBURSEMENT	9.00
HARDING & SHULTZ, P.C.	LEGAL SERVICE	876.50
HENRY, SHANNON	CONTRACTED SERVICES	807.25
HIRERIGHT SOLUTIONS INC	PHYSICAL/TESTING	28.00
i-SAFE, INC	SUPPLIES	570.00
INLAND TRUCK PARTS CO	PARTS	2,929.08
JOHN KOHL AUTO CENTER	MAINTENANCE	295.89
KONICA MINOLTA	SERVICES	706.71
KRATOCHVIL, RANAY	REIMBURSEMENT	8.50
MATHESON TRI-GAS INC	SUPPLIES	251.85
MEAD LUMBER - YORK	SUPPLIES	336.18
MERLE'S FLOWER SHOP	SUPPLIES	38.95
MIKE WRIGHT CONSTRUCTION	SERVICES	43.65
MILLER SEED & SUPPLY	SUPPLIES	203.50
MOGEE, WILLIAM	REIMBURSEMENT	65.00
NAEIR	FREIGHT	139.53
NASB	FEES	205.00

**Board Report for Newspaper**

JULY 2013

<u>Vendor Name</u>	<u>Vendor Description</u>	<u>Amount</u>
NE COUNCIL OF SCHOOL ADMIN	FEES	2,258.00
NEBRASKA CENTRAL EQUIPMENT, INC	SUPPLIES	158.22
NECO	EQUIP MAIN	696.10
OMAHA TRUCK CENTER	PARTS	477.69
PAC N SAVE	FOOD/SUPPLIES	96.08
PAYFLEX	FEES	153.45
POTTER REPAIR	REPAIRS	2,727.88
PRESTO-X CO	EXT FEE	97.65
PRIME COMMUNICATIONS, INC	COMP HARDWARE	6,670.91
PURDHAM, ELIZABETH	ACCOMPANIST	700.00
QUILL CORPORATION	SUPPLIES/EQUIP	249.22
SEWARD COUNTY INDEPENDENT	PERIODICALS/ADV/PRINTING	163.00
SEWARD COUNTY PPD	ELECTRICITY	6,798.53
SOFTCHOICE CORP.	HARDWARE	6,049.37
SOFTWARE UNLIMITED INC	SUPPLIES/FEES	3,100.00
SOURCEGAS	FUEL	952.09
STATE OF NEBRASKA	TELEPHONE	444.30
STUHR MUSEUM EDUCATION DEPT	FEES	318.50
SWANSON, SANDRA	ACCOMPANIST	800.00
UNITED FARMERS COOPERATIVE	FUEL	2,094.39
UTICA PARTS & SERVICE	REPAIRS	2,078.34
VILLAGE OF UTICA	WATER/SEWER	956.16
WALMART COMMUNITY	SUPPLIES	62.46
WINDSTREAM	TELEPHONE	256.71
WINGATE INN	RESERVATIONS	179.90
YORK ACE HARDWARE	SUPPLIES	1.00
YORK NEWS TIMES	ADV/PRINTING	457.25
YORK PUBLIC SCHOOLS	TUITION	9.83

Fund Total: 118,284.76

Checking Account Total: 118,284.76

BUILDING FUND

BVH Architects	9,150.00
BVH Architects	23,689.48
BVH Architects	7,854.53
Benesch & Company	4,125.00
Rega Engineering	2,500.00
	<hr/>
	\$47,319.01

DEPRECIATION FUND

Nebraska/Central Equipment, Inc      \$19,088.94

July 2013  
June 2013 Bank Statement

CENTENNIAL PUBLIC SCHOOL INVESTMENTS

FUND	BANK	TYPE OF INVESTMENT	INT. RATE AMOUNT	INT.REC
Lunch Fund	First Bank of Utica	Checking 180000		
			\$510.71	
		Total	\$510.71	
Depreciation Fund	Farmers & Merchants	MMA 436 949	\$118,484.33	\$13.63
			\$118,484.33	
		Total		
Unemployment Ins.	Cornerstone Bank	Certificate 66245	\$53,115.60	\$559.25
	Cornerstone Bank	MMA 81190	\$21,386.49	\$2.05
			\$74,502.09	
		Total		
Building Fund	First Bank of Utica	Checking 18 064 6	\$634,462.54	\$125.85
		Qualified Cap Bond 180554	\$17,840.75	\$1.47
			\$652,303.29	
		Total		
General Fund	Farmers & Merchants	MMA 436 436	\$92,374.50	\$10.63
	Farmers & Merchants	CD 71455 24mo	\$121,804.87	
	Farmers & Merchants	CD 80211 17 mo 7/2/2014	\$119,676.33	
	First Bank of Utica	MMA 18 065 3 General Acct	\$102,916.61	\$21.14
	First Bank of Utica	CD16282	\$121,233.57	
	Cornerstone Bank	MMA 300079871	\$56,106.69	\$5.38
	Cornerstone Bank	CD 16634 24mo	\$128,886.36	
	Cornerstone Bank	CD 20074 48 mo 12-01-13	\$128,564.43	
	York State, Gresham	MMA 1027291	\$55,378.52	\$6.14
	York State, Gresham	CD 5204	\$187,607.99	\$421.33
	York State, Gresham	CD 5215	\$127,756.11	\$258.06
	First Bank of Utica	PayFlex Acct	\$11,708.87	
			\$1,254,014.85	\$722.68
		Total		
First Bank of Utica	Checking 180505		\$1,714,014.76	\$272.92
			\$1,714,014.76	
		Total Invested All Accounts Combined	\$3,813,830.03	

Total amount invested at Farmers & Merchants ..... \$452,340.03  
 Total amount invested at First Bank of Utica ..... \$2,602,687.81  
 Total amount invested at Cornerstone Bank, Waco ..... \$388,059.57  
 Total amount invested at York State, Gresham ..... \$370,742.62  
Total Invested \$3,813,830.03



Committed to Your Success!

3221 Lincoln  
PO Box 129  
York, Nebraska 68467

June 25<sup>th</sup>, 2013

Virgil Heine  
Centennial Schools  
Utica, Nebraska 68456  
402-641-7284

Hello Virgil,

I have gathered the information you requested in reference to upgrading the current JD 1070 tractor and loader you have to a JD 5075E that will have the lift capacity that you are needing in a loader and the power move more items around.

I have given you options for a cab and open operator station tractors with loader and pallet forks. Both options will use the JD 500 style carrier – the same you currently have, this way you can use the large custom built bucket you already have for snow.

The tractor options are priced with PowerGard Protection package on the engine and powertrain for 60 months or 2000 hours, whichever comes first.

JD 5075E Cab Tractor with JD 553 Loader, bucket and pallet forks	\$37,500 with trade
JD 5075E Open Station Tractor with JD 553 Loader, bucket and pallet forks	\$32,500 with trade

The snow blower option you wanted is separate from the tractor, but can be added to if you wish.  
3 point Mounted Frontier Snow Blower \$5,750

Total of package with JD 5075E Cab, Loader, Pallet Forks and Snow Blower	\$43,250 with trade
Total of package with JD 5075E Open Station, Loader, Pallet Forks and Snow Blower	\$38,250 with trade

Your lawn mower trade options, we discussed and you have a residential model mower currently. You stated that you have to back up frequently and your current model does not turn very tight. I have recommended the JD X534, this a 4 wheel steer mower with a 54" mowing deck.

JD x534 Lawn Mower 54" Deck \$3,700 with trade

Please review this information and give me a call with any questions you may have, I look forward to working with you.

Respectfully,  
*Greg Myers*

**Greg Myers**  
Sales Representative

Office: (402) 362-6607  
Cell: (402) 710-1128  
Fax: (402) 362-6608  
[gmyers@plainseg.com](mailto:gmyers@plainseg.com)

Cost of Total Trade with Cab Tractor Option and Mower	\$46,950 with trades
Cost of Total Trade with Open Station Tractor Option and Mower	\$41,950 with trades

## Municipal Lease Rates

Benefits of John Deere Financial Municipal Lease

- Low Rate 4.3% (up to 60 months)
- Entity retain ownership of the equipment after the last payment is made
- **“Walk Away” Non-Appropriation Clause**

### Example

Finance \$47000 for 60 months at 4.3% - Approximate annual payment of \$9000 (6 payments)

This can be split up into 6 annual payments, the 1<sup>st</sup> payment being made upon delivery of the equipment. 2<sup>nd</sup> payment 12 months later, 3<sup>rd</sup> in 12 months, 4<sup>th</sup> in 12 months, 5<sup>th</sup> in 12 months, 6<sup>th</sup> in 12 months – You would now own the equipment

Possession is taken

September 1 <sup>st</sup> , 2013	1 <sup>st</sup> Payment
September 1 <sup>st</sup> , 2014	1 <sup>st</sup> Full Year of Lease, 2 <sup>nd</sup> Payment
September 1 <sup>st</sup> , 2015	2 <sup>nd</sup> Full Year of Lease, 3 <sup>rd</sup> Payment
September 1 <sup>st</sup> , 2016	3 <sup>rd</sup> Full Year of Lease, 4 <sup>th</sup> Payment
September 1 <sup>st</sup> , 2017	4 <sup>th</sup> Full Year of Lease, 5 <sup>th</sup> Payment
September 1 <sup>st</sup> , 2018	5 <sup>th</sup> and Final Year of Lease, 6 <sup>th</sup> Payment – Equipment is Owned!

## 5075E Open Operator Station Utility Tractor (57-61 PTO hp)

Equipment for Base Machine

### ENGINE:

75 (55.0 kW) 97/68/EC Engine

Horsepower @ 2400 RPM\*

61 (44.9 kW) PTO Horsepower @ 2400 RPM\*

3 Cylinder Turbocharged John Deere

PowerTech Diesel Engine

179 C.I.D. (2.9L)

Dry Type Air Cleaner with Safety Element

Underhood Muffler with Vertical Exhaust Stack

Anti-Freeze

Hand and Foot Throttles

Key Engine Shutoff

Fan Finger Guard

Heavy Duty Air Intake Pre-Heater

### TRANSMISSION:

9F/3R SyncShuttle - 2R, 5R and 8R

Synchronized Shuttle Shifts and

Speed Shifts, Integrated Park

Position

Right Hand Shifted Speeds

Left Hand Shifted Ranges

Differential Lock

Neutral Start Safety Switch

### REAR AXLE:

Flanged Rear Axle

Planetary Final Drives

### STEERING AND BRAKES:

Hydrostatic Power Steering

Hydraulically Actuated Wet Disk Brakes

Self-Equalizing and Self-Adjusting

### HYDRAULICS:

Open Center Hydraulic System

Tandem Gear Pump 18.2 GPM (68.8 LPM)

Maximum Total Flow

Steering Pump 6.8 GPM (25.7 LPM)

Implement Pump 11.4 GPM (43.1 LPM)

One Rear Selective Control Valve

### POWER TAKE-OFF SHAFT:

Independent "Live" 540 RPM Rear PTO Shaft

Operator Presence Safety Warning - PTO

Safety Start Switch

### ROCKSHAFT, HITCH AND DRAWBAR:

Rear Rockshaft with Position Control,

Draft Control, and Adjustable Rate of Drop

3-Point (Category II) Hitch with Sway Chains -

Convertible to Category I

Interchangeable Hitch Balls

Adjustable Drawbar

### INSTRUMENTATION:

Electric Fuel Gauge

Tachometer/Hour Meter

Oil Pressure Indicator Light

Coolant Temperature Gauge

Alternator Indicator Light

Air Restriction Indicator Light

Turn Signal Indicator Light

High Beam Light

PTO Engagement Light

### ELECTRICAL:

12-Volt Electrical System

One Battery - 623 CCA\*\* with 145 Minute Reserve Capacity

40 Amp Alternator

### LIGHTS:

Two Front Halogen Headlights

Two Turn/Flashing Warning Lights

Two Tail Lights

### MISCELLANEOUS:

SMV Emblem

Tilt-Up Hood

Fender Mounted Toolbox

### BASE MACHINE:

2-Post Foldable Roll-Over Protective

Structure (ROPS)

Deluxe Adjustable Vinyl Seat with Retractable Seat Belt

18 U.S. Gallon (68.1 L) Fuel Tank Capacity

Adjustable Front Axle (56-80 In.)

8-Position Steel Rear Wheels with

Two Rear Tires 16.9-28 6PR (R1)

2-Position Steel Front Wheels with

Two Front Tires 7.50-16 6PR (F2)

\* Manufacturer's Rating

\*\* Cold Cranking Amps



Quote Id: 8209995

Customer: CENTENNIAL PUBLIC SCHS

**Quote Summary**

<b>Prepared For:</b> CENTENNIAL PUBLIC SCHS UTICA, NE 68456	<b>Prepared By:</b> Greg A Myers PLAINS EQUIPMENT GROUP 3221 N. LINCOLN AVENUE YORK, NE 68467 Phone: 402-362-6607 gmyers@plainseg.com	<b>Quote Id:</b> 8209995 <b>Created On:</b> June 06, 2013 <b>Last Modified On:</b> June 11, 2013 <b>Expiration Date:</b> June 13, 2013
---	---	---

Equipment Summary	Suggested List	Selling Price	Qty	=	Extended
JOHN DEERE Select Series X534 Multi-Terrain Tractor Less Deck	\$ 8,232.00	\$ 6,950.00	X 1	=	\$ 6,950.00

**Equipment Total** **\$ 6,950.00**

Trade In Summary	Qty	Each	Extended
2010 JOHN DEERE X500 - M0X500A051808	1	\$ 3,250.00	\$ 3,250.00
PayOff			\$ 0.00
Total Trade Allowance			\$ 3,250.00

**Trade In Total** **\$ 3,250.00**

<b>Quote Summary</b>	
Equipment Total	\$ 6,950.00
Trade In	\$ (3,250.00)
SubTotal	\$ 3,700.00
Total	\$ 3,700.00
Down Payment	(0.00)
Rental Applied	(0.00)
<b>Balance Due</b>	<b>\$ 3,700.00</b>

Salesperson : X \_\_\_\_\_

Accepted By : X \_\_\_\_\_



**JOHN DEERE**

# Selling Equipment

Quote Id: 8209995

Customer: CENTENNIAL PUBLIC SCHS

<b>JOHN DEERE Select Series X534 Multi-Terrain Tractor Less Deck</b>				
Hours:				<b>Suggested List</b>
Stock Number:				\$ 8,232.00
				<b>Selling Price</b>
				\$ 6,950.00
Code	Description	Qty	Unit	Extended
4826M	Select Series X534 Multi-Terrain Tractor Less Deck	1	\$ 6,499.00	\$ 6,499.00
<b>Standard Options - Per Unit</b>				
0202	United States and Canada	1	\$ 0.00	\$ 0.00
<b>Standard Options Total</b>				<b>\$ 0.00</b>
<b>Dealer Attachments</b>				
BM23056	Bumper (X300s, X500, X530, X534)	1	\$ 59.00	\$ 59.00
SKU21897	54 in Edge Xtra Deck (54X)	1	\$ 1,299.00	\$ 1,299.00
<b>Dealer Attachments Total</b>				<b>\$ 1,358.00</b>
<b>Other Charges</b>				
	Setup	1	\$ 175.00	\$ 175.00
	Freight	1	\$ 200.00	\$ 200.00
<b>Other Charges Total</b>				<b>\$ 375.00</b>
<b>Suggested Price</b>				<b>\$ 8,232.00</b>
<b>Customer Discounts</b>				
<b>Customer Discounts Total</b>			<b>\$ -1,282.00</b>	<b>\$ -1,282.00</b>
<b>Total Selling Price</b>				<b>\$ 6,950.00</b>



**JOHN DEERE**

Quote Id: 8242102

Customer: CENTENNIAL SCHOOLS

**Quote Summary**

**Prepared For:**  
CENTENNIAL SCHOOLS  
PO BOX 187  
UTICA, NE 68456  
Business: 402-534-2321

**Prepared By:**  
Greg A Myers  
PLAINS EQUIPMENT GROUP  
3221 N. LINCOLN AVENUE  
YORK, NE 68467  
Phone: 402-362-6607  
gmyers@plainseg.com

**Quote Id:** 8242102  
**Created On:** June 12, 2013  
**Last Modified On:** June 25, 2013  
**Expiration Date:** July 31, 2013

Equipment Summary	Suggested List	Selling Price	Qty	Extended
Frontier SB1194 - 94 In. 3-Point Medium Snowblower - U.S.	\$ 6,253.00	\$ 5,750.00 X	1 =	\$ 5,750.00

**Equipment Total** **\$ 5,750.00**

**Quote Summary**

Equipment Total	\$ 5,750.00
SubTotal	\$ 5,750.00
Total	\$ 5,750.00
Down Payment	(0.00)
Rental Applied	(0.00)
<b>Balance Due</b>	<b>\$ 5,750.00</b>

Salesperson : X \_\_\_\_\_

Accepted By : X \_\_\_\_\_



**JOHN DEERE**

# Selling Equipment

Quote Id: 8242102

Customer: CENTENNIAL SCHOOLS

<b>Frontier SB1194 - 94 In. 3-Point Medium Snowblower - U.S.</b>				
<b>Hours:</b>				<b>Suggested List</b>
<b>Stock Number:</b>				\$ 6,253.00
				<b>Selling Price</b>
				\$ 5,750.00
<b>Code</b>	<b>Description</b>	<b>Qty</b>	<b>Unit</b>	<b>Extended</b>
3806XF	SB1194 - 94 In. 3-Point Medium Snowblower - U.S.	1	\$ 5,063.14	\$ 5,063.14
<b>Standard Options - Per Unit</b>				
1010	Hydraulic Cylinder Kit for Chute Rotation	1	\$ 439.86	\$ 439.86
9000	Hydraulic Cylinder Kit for Chute Deflector	1	\$ 300.00	\$ 300.00
<b>Standard Options Total</b>				<b>\$ 739.86</b>
<b>Other Charges</b>				
	Setup	1	\$ 150.00	\$ 150.00
	Freight	1	\$ 300.00	\$ 300.00
<b>Other Charges Total</b>				<b>\$ 450.00</b>
<b>Suggested Price</b>				<b>\$ 6,253.00</b>
<b>Customer Discounts</b>				
<b>Customer Discounts Total</b>			<b>\$ -503.00</b>	<b>\$ -503.00</b>
<b>Total Selling Price</b>				<b>\$ 5,750.00</b>



Quote Id: 8228944

Customer: CENTENNIAL SCHOOLS

**Quote Summary**

<b>Prepared For:</b> CENTENNIAL SCHOOLS PO BOX 187 UTICA, NE 68456 Business: 402-534-2321	<b>Prepared By:</b> Greg A Myers PLAINS EQUIPMENT GROUP 3221 N. LINCOLN AVENUE YORK, NE 68467 Phone: 402-362-6607 gmyers@plainseg.com	<b>Quote Id:</b> 8228944 <b>Created On:</b> June 10, 2013 <b>Last Modified On:</b> June 25, 2013 <b>Expiration Date:</b> July 31, 2013
---	---	---

<b>Equipment Summary</b>	<b>Suggested List</b>	<b>Selling Price</b>	<b>Qty</b>	<b>Extended</b>
JOHN DEERE (MY2013) 5075E Open Operator Station Utility Tractor (57-61 PTO hp) PowerGard Protection	\$ 35,734.00	\$ 31,531.00 X	1 =	\$ 31,531.00
		\$ 1,319.00 X	1 =	\$ 1,319.00
<b>Sub Total</b>				<b>\$ 32,850.00</b>
JOHN DEERE 553 Standard Loader	\$ 8,070.00	\$ 7,050.00 X	1 =	\$ 7,050.00
Frontier AP12F Fixed Pallet Fork for Current 200/300/400/500 Series Carrier	\$ 1,210.00	\$ 1,100.00 X	1 =	\$ 1,100.00
<b>Equipment Total</b>				<b>\$ 41,000.00</b>

<b>Trade In Summary</b>	<b>Qty</b>	<b>Each</b>	<b>Extended</b>
1998 JOHN DEERE 1070 - M01070A170705	1	\$ 8,500.00	\$ 8,500.00
PayOff			\$ 0.00
Total Trade Allowance			\$ 8,500.00
<b>Trade In Total</b>			<b>\$ 8,500.00</b>

<b>Quote Summary</b>	
Equipment Total	\$ 41,000.00
Trade In	\$ (8,500.00)
SubTotal	\$ 32,500.00
Total	\$ 32,500.00
Down Payment	(0.00)
Rental Applied	(0.00)
<b>Balance Due</b>	<b>\$ 32,500.00</b>

Salesperson : X \_\_\_\_\_

Accepted By : X \_\_\_\_\_



**JOHN DEERE**

# Selling Equipment

Quote Id: 8228944

Customer: CENTENNIAL SCHOOLS

<b>JOHN DEERE (MY2013) 5075E Open Operator Station Utility Tractor (57-61 PTO hp)</b>				
<b>Hours:</b>				<b>Suggested List</b>
<b>Stock Number:</b>				\$ 35,734.00
				<b>Selling Price</b>
				\$ 31,531.00
<b>Code</b>	<b>Description</b>	<b>Qty</b>	<b>Unit</b>	<b>Extended</b>
1753LV	5075E Open Operator Station Utility Tractor (57-61 PTO hp)	1	\$ 23,833.00	\$ 23,833.00
<b>Standard Options - Per Unit</b>				
0409	English Operators Manual and Decal Kit	1	\$ 0.00	\$ 0.00
1381	12F/12R PowrReverser Transmission - 540/540E (PR)	1	\$ 2,118.00	\$ 2,118.00
3420	Dual Mid Valves with Joystick Control	1	\$ 1,101.00	\$ 1,101.00
5113	21.5L-16.1 In. 6PR R3 Bias	1	\$ -88.00	\$ -88.00
6040	MFWD (4 Wheel Drive)	1	\$ 5,192.00	\$ 5,192.00
6133	12.5/80-18 In. 10PR I3(R4 Type) Bias	1	\$ 828.00	\$ 828.00
<b>Standard Options Total</b>				<b>\$ 9,151.00</b>
<b>Service Agreements</b>				
	PowerGard Protection	1	\$ 1,319.00	\$ 1,319.00
<b>Service Agreements Total</b>				<b>\$ 1,319.00</b>
<b>Other Charges</b>				
	Setup	1	\$ 1,500.00	\$ 1,500.00
	Freight	1	\$ 1,250.00	\$ 1,250.00
<b>Other Charges Total</b>				<b>\$ 2,750.00</b>
<b>Suggested Price</b>				<b>\$ 37,053.00</b>
<b>Customer Discounts</b>				
<b>Customer Discounts Total</b>			<b>\$ -4,203.00</b>	<b>\$ -4,203.00</b>
<b>Total Selling Price</b>				<b>\$ 32,850.00</b>

<b>JOHN DEERE 553 Standard Loader</b>				
<b>Hours:</b>				<b>Suggested List</b>
<b>Stock Number:</b>				\$ 8,070.00
				<b>Selling Price</b>
				\$ 7,050.00
<b>Code</b>	<b>Description</b>	<b>Qty</b>	<b>Unit</b>	<b>Extended</b>
2451P	553 Standard Loader	1	\$ 5,780.00	\$ 5,780.00
<b>Standard Options - Per Unit</b>				



**JOHN DEERE**

# Selling Equipment

Quote Id: 8228944

Customer: CENTENNIAL SCHOOLS

0595	Custom Configuration	1	\$ 0.00	\$ 0.00
1017	Mounting Frame	1	\$ 0.00	\$ 0.00
2000	2 Function Hoses and Couplers	1	\$ 0.00	\$ 0.00
4000	Large Ballast Box	1	\$ 936.00	\$ 936.00
7010	John Deere 500 Attachment Carrier	1	\$ 0.00	\$ 0.00
8425	73 In. (1850 mm) General Purpose Bucket (JD Carrier)	1	\$ 118.00	\$ 118.00
9014	Hood Guard	1	\$ 236.00	\$ 236.00
<b>Standard Options Total</b>				<b>\$ 1,290.00</b>
<b>Other Charges</b>				
	Setup	1	\$ 750.00	\$ 750.00
	Freight	1	\$ 250.00	\$ 250.00
<b>Other Charges Total</b>				<b>\$ 1,000.00</b>
<b>Suggested Price</b>				<b>\$ 8,070.00</b>
<b>Customer Discounts</b>				
<b>Customer Discounts Total</b>			<b>\$ -1,020.00</b>	<b>\$ -1,020.00</b>
<b>Total Selling Price</b>				<b>\$ 7,050.00</b>

## Frontier AP12F Fixed Pallet Fork for Current 200/300/400/500 Series Carrier

Hours:

Stock Number:

**Suggested List**

\$ 1,210.00

**Selling Price**

\$ 1,100.00

Code	Description	Qty	Unit	Extended
2153XF	AP12F Fixed Pallet Fork for Current 200/300/400/500 Series Carrier	1	\$ 1,095.00	\$ 1,095.00
<b>Standard Options - Per Unit</b>				
1010	48 In. Pallet Tine	1	\$ 40.00	\$ 40.00
<b>Standard Options Total</b>				<b>\$ 40.00</b>
<b>Other Charges</b>				
	Freight	1	\$ 75.00	\$ 75.00
<b>Other Charges Total</b>				<b>\$ 75.00</b>
<b>Suggested Price</b>				<b>\$ 1,210.00</b>
<b>Customer Discounts</b>				
<b>Customer Discounts Total</b>			<b>\$ -110.00</b>	<b>\$ -110.00</b>
<b>Total Selling Price</b>				<b>\$ 1,100.00</b>



**JOHN DEERE**  
CUSTOMER SERVICE PLANS

**Extended Warranty Proposal**

<b>JOHN DEERE (MY2013) 5075E Open Operator Station Utility Tractor (57-61 PTO hp)</b>					
Date : June 25, 2013					
Machine/Use Information		Plan Description		Price	
Manufacturer	JOHN DEERE	Plan Type	New - Grace Period	Deductible	\$ 250.00
Equipment Type	5075E TRACT	Coverage	Limited	List	\$ 1,319.00
Model	5075E TRACT	Total Months	60		
Country	US	Total Hours	2000		
Scraper/Const. Use	N/A				

GRACE pricing is only good during the first 12 months or 1000 hours of ownership for new tractors during the John Deere basic warranty period. After this period, DELAYED pricing can be purchased upto the end of the John Deere basic warranty for tractors of 24 months or 2000 hours, and having passed a special inspection/certification process. The Total Months and Hours listed above include the John Deere basic Warranty. 'Limited' Plan coverage = Engine & Powertrain only. 'Comprehensive' Plan coverage = Full Machine.

**PowerGard Protection Proposal Prepared for:** I have been offered this extended warranty and

Customer Name - Please Print

- I ACCEPT the PowerGard Protection  
 I DECLINE the PowerGard Protection

Customer Signature

If declined, I fully understand that any equipment listed above is not covered for customer expenses due to component failures beyond the original basic warranty period provided by John Deere.

**Note :** This is **not** a contract. For specific PowerGard Protection coverage terms and conditions, please refer to the actual PowerGard Protection Plan contract for more information and the terms, conditions and limitations of the agreement.

**What PowerGard Protection is :**

The PowerGard Protection Plan is an extended warranty program for reimbursement on parts and labour for covered components that fail due to faulty material or original workmanship that occur beyond the John Deere Basic Warranty coverage period. The agreement is between Deere & Company and the owners of select John Deere Commercial and Agricultural equipment, who purchase the PowerGard Plans for the desired coverage as indicated in this proposal.

**What PowerGard Protection is not :**

PowerGard Protection is not insurance. It also does not cover routine maintenance or high wear items, or insurance-related risks/perils such as collision, overturn, vandalism, wind, fire, hail, etc. It does not cover loss of income or loss of value of crops during or after an equipment failure. See the actual product-specific PowerGard Protection Plan agreement for a complete listing of covered components, and limitations and conditions under the program.

**Features/Benefits:**

- PowerGard protection include the following features and benefits under the program :
- Pays for parts and labour costs incurred on failed covered components (less any applicable deductibles),
- Does not require pre-approval before repairs are made by the authorized John Deere dealership,
- Payments are reimbursed directly to the dealership with no prepayment required by the contract holder.



Quote Id: 8228944

Customer: CENTENNIAL SCHOOLS

**Quote Summary**

**Prepared For:**  
CENTENNIAL SCHOOLS  
PO BOX 187  
UTICA, NE 68456  
Business: 402-534-2321

**Prepared By:**  
Greg A Myers  
PLAINS EQUIPMENT GROUP  
3221 N. LINCOLN AVENUE  
YORK, NE 68467  
Phone: 402-362-6607  
gmyers@plainseg.com

**Quote Id:** 8228944  
**Created On:** June 10, 2013  
**Last Modified On:** June 25, 2013  
**Expiration Date:** July 31, 2013

Equipment Summary	Suggested List	Selling Price	Qty	Extended
JOHN DEERE (MY2013) 5075E Cab Utility Tractor (57 PTO hp) PowerGard Protection	\$ 42,604.00	\$ 36,531.00 X	1 =	\$ 36,531.00
		\$ 1,319.00 X	1 =	\$ 1,319.00
<b>Sub Total</b>				<b>\$ 37,850.00</b>
JOHN DEERE 553 Standard Loader	\$ 8,070.00	\$ 7,050.00 X	1 =	\$ 7,050.00
Frontier AP12F Fixed Pallet Fork for Current 200/300/400/500 Series Carrier	\$ 1,210.00	\$ 1,100.00 X	1 =	\$ 1,100.00
<b>Equipment Total</b>				<b>\$ 46,000.00</b>

Trade In Summary	Qty	Each	Extended
1998 JOHN DEERE 1070 - M01070A170705 PayOff	1	\$ 8,500.00	\$ 8,500.00
Total Trade Allowance			\$ 0.00
<b>Trade In Total</b>			<b>\$ 8,500.00</b>

**Quote Summary**

Equipment Total	\$ 46,000.00
Trade In	\$ (8,500.00)
SubTotal	\$ 37,500.00
Total	\$ 37,500.00
Down Payment	(0.00)
Rental Applied	(0.00)
<b>Balance Due</b>	<b>\$ 37,500.00</b>

Salesperson : X \_\_\_\_\_

Accepted By : X \_\_\_\_\_



**JOHN DEERE**

# Selling Equipment

Quote Id: 8228944

Customer: CENTENNIAL SCHOOLS

## JOHN DEERE (MY2013) 5075E Cab Utility Tractor (57 PTO hp)

Hours:

Suggested List

Stock Number:

\$ 42,604.00

Selling Price

\$ 36,531.00

Code	Description	Qty	Unit	Extended
1755LV	5075E Cab Utility Tractor (57 PTO hp)	1	\$ 38,869.00	\$ 38,869.00

### Standard Options - Per Unit

0409	English Operators Manual and Decal Kit	1	\$ 0.00	\$ 0.00
1381	12F/12R PowrReverser Transmission - 540/540E (PR)	1	\$ 0.00	\$ 0.00
3420	Dual Mid Valves with Joystick Control	1	\$ 1,101.00	\$ 1,101.00
5184	16.9-24 In. 6PR R4 Bias	1	\$ -276.00	\$ -276.00
6040	MFWD (4 Wheel Drive)	1	\$ 0.00	\$ 0.00
6133	12.5/80-18 In. 10PR I3(R4 Type) Bias	1	\$ 160.00	\$ 160.00
<b>Standard Options Total</b>				<b>\$ 985.00</b>

### Service Agreements

	PowerGard Protection	1	\$ 1,319.00	\$ 1,319.00
<b>Service Agreements Total</b>				<b>\$ 1,319.00</b>

### Other Charges

	Setup	1	\$ 1,500.00	\$ 1,500.00
	Freight	1	\$ 1,250.00	\$ 1,250.00
<b>Other Charges Total</b>				<b>\$ 2,750.00</b>

**Suggested Price** \$ 43,923.00

### Customer Discounts

**Customer Discounts Total** \$ -6,073.00

**Total Selling Price** \$ 37,850.00

## JOHN DEERE 553 Standard Loader

Hours:

Suggested List

Stock Number:

\$ 8,070.00

Selling Price

\$ 7,050.00

Code	Description	Qty	Unit	Extended
2451P	553 Standard Loader	1	\$ 5,780.00	\$ 5,780.00

### Standard Options - Per Unit

0595	Custom Configuration	1	\$ 0.00	\$ 0.00
------	----------------------	---	---------	---------



**JOHN DEERE**

# Selling Equipment

Quote Id: 8228944

Customer: CENTENNIAL SCHOOLS

1017	Mounting Frame	1	\$ 0.00	\$ 0.00
2000	2 Function Hoses and Couplers	1	\$ 0.00	\$ 0.00
4000	Large Ballast Box	1	\$ 936.00	\$ 936.00
7010	John Deere 500 Attachment Carrier	1	\$ 0.00	\$ 0.00
8425	73 In. (1850 mm) General Purpose Bucket (JD Carrier)	1	\$ 118.00	\$ 118.00
9014	Hood Guard	1	\$ 236.00	\$ 236.00
<b>Standard Options Total</b>				<b>\$ 1,290.00</b>
<b>Other Charges</b>				
	Setup	1	\$ 750.00	\$ 750.00
	Freight	1	\$ 250.00	\$ 250.00
<b>Other Charges Total</b>				<b>\$ 1,000.00</b>
<b>Suggested Price</b>				<b>\$ 8,070.00</b>
<b>Customer Discounts</b>				
<b>Customer Discounts Total</b>			<b>\$ -1,020.00</b>	<b>\$ -1,020.00</b>
<b>Total Selling Price</b>				<b>\$ 7,050.00</b>

<b>Frontier AP12F Fixed Pallet Fork for Current 200/300/400/500 Series Carrier</b>				
Hours:			<b>Suggested List</b>	
Stock Number:			\$ 1,210.00	
			<b>Selling Price</b>	
			\$ 1,100.00	
<b>Code</b>	<b>Description</b>	<b>Qty</b>	<b>Unit</b>	<b>Extended</b>
2153XF	AP12F Fixed Pallet Fork for Current 200/300/400/500 Series Carrier	1	\$ 1,095.00	\$ 1,095.00
<b>Standard Options - Per Unit</b>				
1010	48 In. Pallet Tine	1	\$ 40.00	\$ 40.00
<b>Standard Options Total</b>				<b>\$ 40.00</b>
<b>Other Charges</b>				
	Freight	1	\$ 75.00	\$ 75.00
<b>Other Charges Total</b>				<b>\$ 75.00</b>
<b>Suggested Price</b>				<b>\$ 1,210.00</b>
<b>Customer Discounts</b>				
<b>Customer Discounts Total</b>			<b>\$ -110.00</b>	<b>\$ -110.00</b>
<b>Total Selling Price</b>				<b>\$ 1,100.00</b>

## Extended Warranty Proposal

JOHN DEERE (MY2013) 5075E Cab Utility Tractor (57 PTO hp)					
Date : June 25, 2013					
Machine/Use Information		Plan Description		Price	
Manufacturer	JOHN DEERE	Plan Type	New - Grace Period	Deductible	\$ 250.00
Equipment Type	5075E CAB TRACTOR	Coverage	Limited	List	\$ 1,319.00
Model	5075E CAB TRACTOR	Total Months	60		
Country	US	Total Hours	2000		
Scraper/Const. Use	N/A				

GRACE pricing is only good during the first 12 months or 1000 hours of ownership for new tractors during the John Deere basic warranty period. After this period, DELAYED pricing can be purchased up to the end of the John Deere basic warranty for tractors of 24 months or 2000 hours, and having passed a special inspection/certification process. The Total Months and Hours listed above include the John Deere basic Warranty. 'Limited' Plan coverage = Engine & Powertrain only. 'Comprehensive' Plan coverage = Full Machine.

**PowerGard Protection Proposal Prepared for:** I have been offered this extended warranty and

-----  
Customer Name - Please Print  I ACCEPT the PowerGard Protection  
 I DECLINE the PowerGard Protection

-----  
Customer Signature If declined, I fully understand that any equipment listed above is not covered for customer expenses due to component failures beyond the original basic warranty period provided by John Deere.

**Note :** This is **not** a contract. For specific PowerGard Protection coverage terms and conditions, please refer to the actual PowerGard Protection Plan contract for more information and the terms, conditions and limitations of the agreement.

**What PowerGard Protection is :**  
The PowerGard Protection Plan is an extended warranty program for reimbursement on parts and labour for covered components that fail due to faulty material or original workmanship that occur beyond the John Deere Basic Warranty coverage period. The agreement is between Deere & Company and the owners of select John Deere Commercial and Agricultural equipment, who purchase the PowerGard Plans for the desired coverage as indicated in this proposal.

**What PowerGard Protection is not :**  
PowerGard Protection is not insurance. It also does not cover routine maintenance or high wear items, or insurance-related risks/perils such as collision, overturn, vandalism, wind, fire, hail, etc. It does not cover loss of income or loss of value of crops during or after an equipment failure. See the actual product-specific PowerGard Protection Plan agreement for a complete listing of covered components, and limitations and conditions under the program.

- Features/Benefits:**
- PowerGard protection include the following features and benefits under the program :
  - Pays for parts and labour costs incurred on failed covered components (less any applicable deductibles),
  - Does not require pre-approval before repairs are made by the authorized John Deere dealership,
  - Payments are reimbursed directly to the dealership with no prepayment required by the contract holder.

# CENTENNIAL PUBLIC SCHOOL

1301 Centennial Avenue  
P.O. Box 187  
Utica, NE 68456-0187  
402-534-2321  
FAX 402-534-2291

Tim DeWaard  
Superintendent  
402-534-2291

Colin Bargaen  
Secondary Principal

Dean Davis  
Activities Director

Mark Murphy  
Elementary Principal

Bob Fish  
Counselor

Barbara Heckathorn  
Special Services

TO: PROSPECTIVE BIDDERS  
FROM: TIM DEWAARD, SUPERINTENDENT  
DATE: MAY 28, 2013

RE: MILK BID QUOTATION FOR 2013-14

Centennial Public School has one attendance center at Utica. The successful bidder agrees to deliver to this location each Tuesday and Friday.


Our firm submits the following bids:

	CARTONS	PLASTIC BOTTLES
½ pint Skim Strawberry	<u>Discontinued</u>	<u>N/A</u>
½ pint 1% Low Fat White	<u>.2010</u>	<u>N/A</u>
½ pint Skim Chocolate	<u>.2090</u>	<u>N/A</u>
½ pint Skim White	<u>.1980</u>	<u>N/A</u>

WE AGREE TO DELIVER TO THE CENTENNIAL PUBLIC SCHOOL EACH TUESDAY AND FRIDAY.

Dean Foods / Land O Lakes  
Firm

235 SW 32<sup>nd</sup> St. Ste. 2 - Lincoln, NE 68522  
Address

  
Authorized Signature

06-13-13  
Date

THIS BID MUST BE RETURNED BY JULY 1, 2013 to: Tim DeWaard, Superintendent  
Centennial Public School  
1301 Centennial Avenue  
P. O. Box 187  
Utica, NE 68456-0187

FAX: 402-534-2291

Communities United for a Brighter Tomorrow



# Dean Foods 2013-14 School Dairy Bid

June 2013



Land O Lakes - Lincoln Office  
 235 SW 32nd St. - Ste. 2  
 Lincoln, NE 68522



Bill To: 22600836909  
 Centennial Public School  
 Attn: Tim DeWaard  
 1301 Centennial Ave / PO Box 187  
 Utica, NE 68456

Milk	Item Number	Escalator
<b>All Half Pints are available in Paper only</b>		
2% HP	11044	
1% HP	11035	0.2010
Fat Free HP	11043	0.1980
Choc Fat Free HP	45837	0.2090
<b>Straw Fat Free HP</b>	<b>Discontinued for 2013/2014</b>	
Gallon Milk VD	10961	
Gallon Milk 1%	11008	
Gallon Milk Fat Free	11006	
Half Gallon Milk 2%	10975	
Half Gallon Buttermilk	29349	
Dean's Fresh 14oz Plastic	49949-49953-49951	
<i>Dean's Fresh 14oz Flavors: 2% White, 1% Choc, VD Choc</i>		
GripNGo & TruMoo 12oz Plastic	All	
<i>GNG &amp; TruMoo Flav: VD, 2%, Skim, 1% Choc, 2% Choc, VD Choc, 1% Straw</i>		
Dean's Chugs 12oz Plastic	32603-32604-32605	
<i>Dean's Chugs Flavors: Vanilla, Choc Shake, Cookies &amp; Cream Shake</i>		
Culture	Item Number	Escalator
5lb Cottage Cheese 4%	11653	
5lb Cottage Cheese 2%	11654	
22oz Cott Ch 2% w/ Sea Salt	49756	
5lb Sour Cream	11573	
5lb Lite Sour Cream	10886	
5lb (LF) Yogurt	All	
24oz (LF & FF) Yogurt	All	
6oz (LF & FF) Yogurt	All	
Juice and Drinks	Item Number	Escalator
Orange Juice HP Paper	11188	
Orange Juice 12oz Plastic	29134	
Apple Juice 12oz Plastic	29135	
Gallon Orange Juice	11181	
Half Gallon Orange Juice	11214	
Gallon Fruit Rush Drinks	47994-47995-48000-48001	
Soft Serve Ice Cream Mix	Item Number	Escalator
Vanilla 5% Soft Serve	37968	
Chocolate 5% Soft Serve	37969	
Ice Cream Cups	Item Number	Escalator
4oz IC Cups Van-Choc-Straw	50406-50403-50412	
4oz Sherbet Cups Org-Rasp	50410-50411	
4oz Van-Choc NSA IC Cups	50407-50405	
4oz Van Yogurt Cups	50408	


We Accept

We Decline



Please fill in the below information regarding your school, sign and return this sheet (mail, e-mail or fax) along with any other competitive bids and a 13/14 school calendar.

E-mail: [dana\\_hunzeker@deanfoods.com](mailto:dana_hunzeker@deanfoods.com)

Fax: 402-474-8739 (mailing address above)

Schools Start Date:

Name of Food Service Director:

Phone # of Food Service Director:

Signature:

Ship To(s):

22600836910 Centennial Public School

Delivery days and times to be determined. BID DOES NOT INCLUDE STRAWS.

Bid includes use and refrigeration maintenance of a Dean Foods milk cooler(s).

**If you have any questions concerning your schools milk bid please contact Dana Hunzeker at 402-474-8709.**



Produced & Distributed by Dean Foods.

**Fluid Milk Escalator /De-escalator Clause**  
**2013-2014 School Year**

1.) The attached bid is based on the cost of skim milk and butterfat to include premiums in Federal Order Market 32 for the month of **June 2013**.

Future price adjustments will be predicated on the following escalator/de-escalator formula for fluid milk taking into consideration monthly changes in the cost of skim milk, butterfat, ingredients, over order premiums. Expenses including fuel, energy, packaging and ingredients will also be included in monthly changes and will be communicated as to what these expenses include.

**SKIM MILK:**                      **Price: \$ 13.09 CWT**

- For each \$.10/cwt increase or decrease in the cost of skim milk, prices will adjust respectively as follows on all fat levels.

5 Gallon - .043 per 5 Gallon  
 Gallon - .0086 per Gallon  
 8 oz. - .00054 per 8 oz.

**BUTTERFAT:**                      **Price: \$ 1.8000 per pound**

- For each \$.10 increase or decrease in the cost of butterfat, prices will adjust respectively as follows by various fat levels.

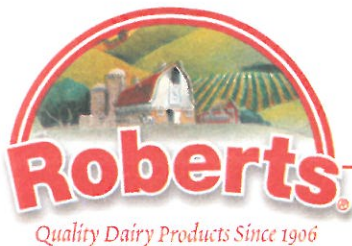
<u>Item</u>	<u>Whole (3.25%)</u>	<u>2%</u>	<u>1%</u>	<u>Fat Free</u>
5 Gallon	.1395/5 Gal	.086/5 Gal	.043/5 Gal	.0045/5 Gal
Gallon	.0279/Gal	.0172/Gal	.0086/Gal	.0009/Gal
8 Oz	.0017/8 Oz	.0011/8 Oz	.0005/8 Oz	.0001/8 Oz

- **Monthly per unit adjustments will reflect a combination of the changes in skim milk and butterfat, and expenses (fuel, packaging, ingredients, resin, energy, etc.).**

This escalator/de-escalator formula applies to all fluid milk items.

2.) **Non Fluid Milk Items**

Prices bid on products other than fluid milk are for one month only, and will automatically renew at the quoted price, unless Dean Foods advises you of our intent to change the price as a result of a significant supplier price change.



Corporate Offices:  
Omaha Division  
2901 Cuming Street  
PO Box 3825  
Omaha, NE 68131-2108  
(402) 344-4321

Iowa Division  
PO Box 2326  
Iowa City, Iowa 52244  
(319) 338-7575

Kansas City Division  
3805 Emanuel Cleaver II Blvd.  
Kansas City, MO 64128-2356  
(816) 921-7270

June 24, 2013

Centennial Public School  
1301 Centennial Avenue  
Utica, NE 68456-0187

Tim DeWaard,

Hiland Dairy is pleased to submit for your consideration the following quote for **Dairy Products** for the 2013-2014 school year.

**Product**

½ Pint 1%	.1920
½ Skim Choc	.2020
½ Pint Skim Straw	.2020
½ Pint Skim	.1880

**Bid Due Date** June 27<sup>th</sup> 2013

**Escalating/De-escalating**

**accepted**

**declined**

Please submit form to:  
Hiland Dairy  
Lewie Bokelman  
5220 NW 38<sup>th</sup> St.  
Lincoln, NE 68524  
Phone (402) 470-2424  
Fax (402) 470-2425

This is an escalating/de-escalating bid on all items. Please see attached clause for monthly cost adjustment factors.

When a decision has been reached based on this bid kindly mail or fax back any competitive bids along with this form.

Signed;

First Delivery:

Please enclose a 2013-2014 school calendar

Sincerely,

  
Lewie Bokelman  
Branch Sales Manager

### **Milk Escalator / De-Escalator Pricing Clause (DFA Supplied)**

The pricing quoted is based on **June's 2013** Federal Milk Marketing Order for Class I Skim and Class I Butterfat. This pricing is subject to change as the cost of raw milk changes each month according to the USDA Federal Milk Market Price Announcements and Dairy Farmers of America.

The cost of milk fluctuates up and down each month based on the cost changes in raw milk. Changes of a minimum of \$.10 per CWT (up or down) will move the cost of a half pint \$ .00054.

Prices will also be adjusted up or down based on cost changes in packaging, ingredients, labor, fuel, juice concentrate, re-sale products (ex. Tropicana, Sport Shake), etc. Supporting documentation will be supplied upon request.

All price changes will become effective on the 1<sup>st</sup> day of the month following the price announcement.

**CERTIFICATE OF NON-COLLUSION/INDEPENDENT PRICE DETERMINATION**

The undersigned certifies that the preparation and submission of the attached bid have been conducted independently, without consultation, communication, or agreement with any other bidder or potential bidder and that there will be no consultation, communication, or agreement on the price, terms, and conditions of this bid by or on behalf of Hiland Dairy Foods Co., LLC and Roberts Dairy Company, LLC with any other bidder or potential bidder prior to the official opening of the bid.

Date: 6-24-13

Hiland Dairy Foods Co., LLC  
Roberts Dairy Company, LLC



**Ted Barlows**  
**Assistant General Manager/  
General Sales Manager**

FUEL BID FORM

United Farmers Coop

agrees to furnish gasoline and/or diesel fuel to the Centennial Public School for the 2013-14 school year at the prices listed below. It is understood that dealer price adjustments will be shared by the school district as per notice in the specification letter.

FULL SERVICE

SELF SERVICE

Non-leaded per gallon N/A ¢ above cost

.055 ¢ above cost *F.O.B. Utica*

Diesel per gallon N/A ¢ above cost

.055 ¢ above cost *F.O.B. Utica*

*Valeria Legido*  
Signature of Authorized Agent

*U.F.C.*  
Name of Firm

*2803 N. Nebraska Ave York NE*  
Address

*6-3-13*  
Date

Return to: Tim DeWaard, Superintendent  
Centennial Public School  
1301 Centennial Avenue  
P. O. Box 187  
Utica, NE 68456

*Contacto: Val Legido @ 402-362-8434*

*Brandon @ 402-362-8437*

### 2013/14 Additional Growth with 75% Board Vote

For school fiscal year 2013-14, schools can access an expenditure exclusion **up to an** amount equal to 2% of the 2012/13 Certified General Fund Budget Authority. The maximum amount districts could access is in the far right column.

The local school board must approve the access to this additional budget authority with a 75% vote of the board. For example, if the local board has 8 members, at least 6 members must vote to approve.

State Board approval is also required for the school to access this expenditure exclusion for additional budget growth. A template for this request is found on the next tab of this spreadsheet.

Following State Board Approval, the amount of this expenditure exclusion will appear on the 2013/14 LC-2 on Line A-773.

June 4, 2013

2013/14 Additional Growth with 75% Board Vote		Class	2012/13 Budget Authority	2% Growth with 75% Board Vote
01-0003-000	KENESAW PUBLIC SCHOOLS	3	3,304,552	66,091
01-0018-000	HASTINGS PUBLIC SCHOOLS	3	27,597,350	551,947
01-0090-000	ADAMS CENTRAL PUBLIC SCHOOLS	3	9,635,723	192,714
01-0123-000	SILVER LAKE PUBLIC SCHOOLS	3	3,780,253	75,605
02-0009-000	NELIGH-OAKDALE SCHOOLS	3	4,513,710	90,274
02-0018-000	ELGIN PUBLIC SCHOOLS	3	2,639,821	52,796
02-2001-000	NEBRASKA UNIFIED DISTRICT 1	3	6,547,717	130,954
03-0500-000	ARTHUR COUNTY SCHOOLS	2	2,442,184	48,844
04-0001-000	BANNER COUNTY PUBLIC SCHOOLS	3	3,252,666	65,053
05-0071-000	SANDHILLS PUBLIC SCHOOLS	3	2,488,848	49,777
06-0001-000	BOONE CENTRAL SCHOOLS	3	7,175,658	143,513
06-0006-000	CEDAR RAPIDS PUBLIC SCHOOLS	3	2,150,468	43,009
06-0017-000	ST EDWARD PUBLIC SCHOOLS	3	2,091,305	41,826
07-0006-000	ALLIANCE PUBLIC SCHOOLS	3	12,452,727	249,055
07-0010-000	HEMINGFORD PUBLIC SCHOOLS	3	5,014,186	100,284
08-0036-000	LYNCH PUBLIC SCHOOLS	3	1,699,933	33,999
08-0050-000	WEST BOYD SCHOOL DISTRICT	3	4,044,819	80,896
09-0010-000	AINSWORTH COMMUNITY SCHOOLS	3	7,037,654	140,753
10-0002-000	GIBBON PUBLIC SCHOOLS	3	6,414,988	128,300
10-0007-000	KEARNEY PUBLIC SCHOOLS	3	40,585,836	811,717
10-0009-000	ELM CREEK PUBLIC SCHOOLS	3	3,849,692	76,994
10-0019-000	SHELTON PUBLIC SCHOOLS	3	4,626,771	92,535
10-0069-000	RAVENNA PUBLIC SCHOOLS	3	4,467,351	89,347
10-0105-000	PLEASANTON PUBLIC SCHOOLS	3	2,516,175	50,324
10-0119-000	AMHERST PUBLIC SCHOOLS	2	3,027,389	60,548
11-0001-000	TEKAMAH-HERMAN COMMUNITY SCHS	3	5,874,713	117,494
11-0014-000	OAKLAND CRAIG PUBLIC SCHOOLS	3	4,381,721	87,634
11-0020-000	LYONS-DECATUR NORTHEAST SCHS	3	3,140,472	62,809
12-0056-000	DAVID CITY PUBLIC SCHOOLS	3	7,338,460	146,769
12-0502-000	EAST BUTLER PUBLIC SCHOOLS	3	4,553,502	91,070
13-0001-000	PLATTSMOUTH COMMUNITY SCHOOLS	3	14,280,086	285,602
13-0022-000	WEeping WATER PUBLIC SCHOOLS	3	3,851,695	77,034
13-0032-000	LOUISVILLE PUBLIC SCHOOLS	3	5,649,830	112,997
13-0056-000	CONESTOGA PUBLIC SCHOOLS	3	5,600,116	112,002
13-0097-000	ELMWOOD-MURDOCK PUBLIC SCHOOLS	3	4,976,795	99,536

2013/14 Additional Growth with 75% Board Vote		Class	2012/13 Budget Authority	2% Growth with 75% Board Vote
14-0008-000	HARTINGTON PUBLIC SCHOOLS	3	3,121,147	62,423
14-0045-000	RANDOLPH PUBLIC SCHOOLS	3	4,407,930	88,159
14-0054-000	LAUREL-CONCORD PUBLIC SCHOOLS	3	4,632,924	92,658
14-0101-000	WYNOT PUBLIC SCHOOLS	3	1,754,346	35,087
14-0541-000	COLERIDGE COMMUNITY SCHOOLS	3	1,538,345	30,767
15-0010-000	CHASE COUNTY SCHOOLS	3	6,463,959	129,279
15-0536-000	WAUNETA-PALISADE PUBLIC SCHS	3	4,087,100	81,742
16-0006-000	VALENTINE COMMUNITY SCHOOLS	3	9,851,404	197,028
16-0030-000	CODY-KILGORE PUBLIC SCHS	2	2,080,546	41,611
17-0001-000	SIDNEY PUBLIC SCHOOLS	3	14,058,280	281,166
17-0003-000	LEYTON PUBLIC SCHOOLS	3	3,800,094	76,002
17-0009-000	POTTER-DIX PUBLIC SCHOOLS	3	3,197,571	63,951
18-0002-000	SUTTON PUBLIC SCHOOLS	3	4,988,712	99,774
18-0011-000	HARVARD PUBLIC SCHOOLS	3	2,797,547	55,951
19-0039-000	LEIGH COMMUNITY SCHOOLS	3	2,469,543	49,391
19-0058-000	CLARKSON PUBLIC SCHOOLS	3	2,483,215	49,664
19-0070-000	DODGE-HOWELLS UNIFIED PUBLIC SCHOOLS	3	4,199,206	83,984
19-0123-000	SCHUYLER COMMUNITY SCHOOLS	3	15,311,725	306,235
20-0001-000	WEST POINT PUBLIC SCHOOLS	3	8,901,657	178,033
20-0020-000	BANCROFT-ROSALIE COMM SCHOOLS	3	3,180,268	63,605
20-0030-000	WISNER-PILGER PUBLIC SCHOOLS	3	5,929,535	118,591
21-0015-000	ANSELMO-MERNA PUBLIC SCHOOLS	3	3,384,463	67,689
21-0025-000	BROKEN BOW PUBLIC SCHOOLS	3	7,726,765	154,535
21-0044-000	ANSLEY PUBLIC SCHOOLS	3	2,849,866	56,997
21-0084-000	SARGENT PUBLIC SCHOOLS	3	2,638,375	52,767
21-0089-000	ARNOLD PUBLIC SCHOOLS	3	2,264,847	45,297
21-0180-000	CALLAWAY PUBLIC SCHOOLS	3	2,721,289	54,426
22-0011-000	SO SIOUX CITY COMMUNITY SCHS	3	35,456,636	709,133
22-0031-000	HOMER COMMUNITY SCHOOLS	3	4,688,845	93,777
23-0002-000	CHADRON PUBLIC SCHOOLS	3	8,885,216	177,704
23-0071-000	CRAWFORD PUBLIC SCHOOLS	3	2,796,296	55,926
24-0001-000	LEXINGTON PUBLIC SCHOOLS	3	30,364,860	607,297
24-0004-000	OVERTON PUBLIC SCHOOLS	3	3,274,615	65,492
24-0011-000	COZAD CITY SCHOOLS	3	10,105,742	202,115
24-0020-000	GOTHENBURG PUBLIC SCHOOLS	3	9,190,773	183,815
24-0101-000	SUMNER-EDDYVILLE-MILLER SCHS	3	2,684,858	53,697
25-0025-000	CREEK VALLEY SCHOOLS	3	5,234,995	104,700
25-0095-000	SOUTH PLATTE PUBLIC SCHOOLS	3	2,985,880	59,718
26-0001-000	PONCA PUBLIC SCHOOLS	3	4,910,750	98,215
26-0024-000	NEWCASTLE PUBLIC SCHOOLS	3	1,604,042	32,081
26-0070-000	ALLEN CONSOLIDATED SCHOOLS	3	2,669,367	53,387
26-0561-000	EMERSON-HUBBARD PUBLIC SCHOOLS	3	3,813,566	76,271
27-0001-000	FREMONT PUBLIC SCHOOLS	3	38,094,522	761,890
27-0062-000	SCRIBNER-SNYDER COMMUNITY SCHS	3	3,788,831	75,777
27-0594-000	LOGAN VIEW PUBLIC SCHOOLS	3	5,713,224	114,264
27-0595-000	NORTH BEND CENTRAL PUBLIC SCHS	3	5,754,289	115,086
28-0001-000	OMAHA PUBLIC SCHOOLS	5	459,414,788	9,188,296
28-0010-000	ELKHORN PUBLIC SCHOOLS	3	52,280,383	1,045,608
28-0015-000	DOUGLAS CO WEST COMMUNITY SCHS	3	9,953,924	199,078
28-0017-000	MILLARD PUBLIC SCHOOLS	3	176,737,566	3,534,751
28-0054-000	RALSTON PUBLIC SCHOOLS	3	26,207,142	524,143
28-0059-000	BENNINGTON PUBLIC SCHOOLS	3	15,363,296	307,266
28-0066-000	WESTSIDE COMMUNITY SCHOOLS	3	58,114,814	1,162,296
29-0117-000	DUNDY CO STRATTON PUBLIC SCHS	3	5,460,020	109,200
30-0001-000	EXETER-MILLIGAN PUBLIC SCHOOLS	3	3,862,591	77,252
30-0025-000	FILLMORE CENTRAL PUBLIC SCHS	3	5,661,691	113,234
30-0054-000	SHICKLEY PUBLIC SCHOOLS	3	2,262,519	45,250
31-0506-000	FRANKLIN PUBLIC SCHOOLS	3	4,348,365	86,967
32-0046-000	MAYWOOD PUBLIC SCHOOLS	3	2,378,417	47,568

2013/14 Additional Growth with 75% Board Vote		Class	2012/13 Budget Authority	2% Growth with 75% Board Vote
32-0095-000	EUSTIS-FARNAM PUBLIC SCHOOLS	3	3,941,536	78,831
32-0125-000	MEDICINE VALLEY PUBLIC SCHOOLS	3	3,004,192	60,084
33-0018-000	ARAPAHOE PUBLIC SCHOOLS	3	3,796,379	75,928
33-0021-000	CAMBRIDGE PUBLIC SCHOOLS	3	4,346,188	86,924
33-0540-000	SOUTHERN VALLEY SCHOOLS	3	5,452,427	109,049
34-0001-000	SOUTHERN SCHOOL DIST 1	3	4,579,323	91,586
34-0015-000	BEATRICE PUBLIC SCHOOLS	3	22,055,614	441,112
34-0034-000	FREEMAN PUBLIC SCHOOLS	3	4,283,978	85,680
34-0100-000	DILLER-ODELL PUBLIC SCHOOLS	3	3,499,175	69,983
35-0001-000	GARDEN COUNTY SCHOOLS	3	4,767,956	95,359
36-0100-000	BURWELL PUBLIC SCHOOLS	3	4,236,959	84,739
37-0030-000	ELWOOD PUBLIC SCHOOLS	3	2,998,763	59,975
38-0011-000	HYANNIS AREA SCHOOLS	3	2,262,245	45,245
39-0010-000	GREELEY-WOLBACH PUBLIC SCHOOLS	3	2,609,359	52,187
39-0055-000	SPALDING PUBLIC SCHOOLS	3	1,810,944	36,219
39-0501-000	NORTH LOUP SCOTIA PUBLIC SCHS	3	2,580,550	51,611
40-0002-000	GRAND ISLAND PUBLIC SCHOOLS	3	77,678,907	1,553,578
40-0082-000	NORTHWEST PUBLIC SCHOOLS	3	13,029,092	260,582
40-0083-000	WOOD RIVER RURAL SCHOOLS	3	6,408,200	128,164
40-0126-000	DONIPHAN-TRUMBULL PUBLIC SCHS	3	4,995,735	99,915
41-0002-000	GILTNER PUBLIC SCHOOLS	2	2,175,870	43,517
41-0091-000	HAMPTON PUBLIC SCHOOLS	3	2,010,376	40,208
41-0504-000	AURORA PUBLIC SCHOOLS	3	10,423,970	208,479
42-0002-000	ALMA PUBLIC SCHOOLS	3	4,009,939	80,199
43-0079-000	HAYES CENTER PUBLIC SCHOOLS	3	2,836,462	56,729
44-0070-000	HITCHCOCK CO SCH SYSTEM	3	4,125,525	82,511
45-0007-000	O'NEILL PUBLIC SCHOOLS	3	8,840,721	176,814
45-0029-000	EWING PUBLIC SCHOOLS	2	2,153,176	43,064
45-0044-000	STUART PUBLIC SCHOOLS	3	2,155,697	43,114
45-0137-000	CHAMBERS PUBLIC SCHOOLS	2	2,198,383	43,968
45-0239-000	WEST HOLT PUBLIC SCHOOLS	3	4,707,513	94,150
46-0001-000	MULLEN PUBLIC SCHOOLS	3	3,370,270	67,405
47-0001-000	ST PAUL PUBLIC SCHOOLS	3	6,592,559	131,851
47-0100-000	CENTURA PUBLIC SCHOOLS	3	6,474,972	129,499
47-0103-000	ELBA PUBLIC SCHOOLS	2	1,819,479	36,390
48-0008-000	FAIRBURY PUBLIC SCHOOLS	3	10,146,548	202,931
48-0300-000	TRI COUNTY PUBLIC SCHOOLS	3	4,780,414	95,608
48-0303-000	MERIDIAN PUBLIC SCHOOLS	3	2,486,487	49,730
49-0033-000	STERLING PUBLIC SCHOOLS	3	3,153,665	63,073
49-0050-000	JOHNSON CO CENTRAL PUBLIC SCHS	3	6,067,729	121,355
50-0001-000	WILCOX-HILDRETH PUBLIC SCHOOLS	3	3,882,462	77,649
50-0501-000	AXTELL COMMUNITY SCHOOLS	3	3,369,648	67,393
50-0503-000	MINDEN PUBLIC SCHOOLS	3	9,712,427	194,249
51-0001-000	OGALLALA PUBLIC SCHOOLS	3	11,001,196	220,024
51-0006-000	PAXTON CONSOLIDATED SCHOOLS	3	2,913,166	58,263
52-0100-000	KEYA PAHA COUNTY SCHOOLS	2	2,100,545	42,011
53-0001-000	KIMBALL PUBLIC SCHOOLS	3	6,197,044	123,941
54-0013-000	CREIGHTON PUBLIC SCHOOLS	3	4,218,542	84,371
54-0096-000	CROFTON COMMUNITY SCHOOLS	3	3,970,343	79,407
54-0501-000	NIOBRARA PUBLIC SCHOOLS	3	2,195,121	43,902
54-0505-000	SANTEE COMMUNITY SCHOOLS	2	3,218,229	64,365
54-0576-000	WAUSA PUBLIC SCHOOLS	3	2,749,797	54,996
54-0586-000	BLOOMFIELD COMMUNITY SCHOOLS	3	3,588,727	71,775
55-0001-000	LINCOLN PUBLIC SCHOOLS	4	282,223,142	5,644,463
55-0145-000	WAVERLY SCHOOL DISTRICT 145	3	15,383,141	307,663
55-0148-000	MALCOLM PUBLIC SCHOOLS	3	5,418,938	108,379
55-0160-000	NORRIS SCHOOL DIST 160	3	18,990,684	379,814
55-0161-000	RAYMOND CENTRAL PUBLIC SCHOOLS	3	6,056,719	121,134
56-0001-000	NORTH PLATTE PUBLIC SCHOOLS	3	32,631,507	652,630

2013/14 Additional Growth with 75% Board Vote		Class	2012/13 Budget Authority	2% Growth with 75% Board Vote
56-0006-000	BRADY PUBLIC SCHOOLS	2	2,442,728	48,855
56-0007-000	MAXWELL PUBLIC SCHOOLS	3	2,863,225	57,264
56-0037-000	HERSHEY PUBLIC SCHOOLS	3	5,836,339	116,727
56-0055-000	SUTHERLAND PUBLIC SCHOOLS	3	5,098,820	101,976
56-0565-000	WALLACE PUBLIC SCH DIST 65 R	2	2,740,841	54,817
57-0501-000	STAPLETON PUBLIC SCHOOLS	3	2,720,896	54,418
58-0025-000	LOUP COUNTY PUBLIC SCHOOLS	2	2,131,876	42,638
59-0001-000	MADISON PUBLIC SCHOOLS	3	5,389,954	107,799
59-0002-000	NORFOLK PUBLIC SCHOOLS	3	38,251,559	765,031
59-0005-000	BATTLE CREEK PUBLIC SCHOOLS	3	5,082,538	101,651
59-0013-000	NEWMAN GROVE PUBLIC SCHOOLS	3	2,618,891	52,378
59-0080-000	ELKHORN VALLEY SCHOOLS	3	3,678,993	73,580
60-0090-000	MC PHERSON COUNTY SCHOOLS	3	1,857,636	37,153
61-0004-000	CENTRAL CITY PUBLIC SCHOOLS	3	7,272,560	145,451
61-0049-000	PALMER PUBLIC SCHOOLS	3	2,846,482	56,930
62-0021-000	BAYARD PUBLIC SCHOOLS	3	4,494,369	89,887
62-0063-000	BRIDGEPORT PUBLIC SCHOOLS	3	8,202,764	164,055
63-0001-000	FULLERTON PUBLIC SCHOOLS	3	3,448,889	68,978
63-0030-000	TWIN RIVER PUBLIC SCHOOLS	3	6,272,213	125,444
64-0023-000	JOHNSON-BROCK PUBLIC SCHOOLS	3	3,216,088	64,322
64-0029-000	AUBURN PUBLIC SCHOOLS	3	9,021,694	180,434
65-0011-000	SUPERIOR PUBLIC SCHOOLS	3	4,588,952	91,779
65-2005-000	SO CENTRAL NE UNIFIED SYSTEM 5	3	9,690,269	193,805
66-0027-000	SYRACUSE-DUNBAR-AVOCA SCHOOLS	3	7,642,350	152,847
66-0111-000	NEBRASKA CITY PUBLIC SCHOOLS	3	11,194,424	223,888
66-0501-000	PALMYRA DISTRICT O R 1	3	5,219,047	104,381
67-0001-000	PAWNEE CITY PUBLIC SCHOOLS	3	3,457,845	69,157
67-0069-000	LEWISTON CONSOLIDATED SCHOOLS	3	2,522,657	50,453
68-0020-000	PERKINS COUNTY SCHOOLS	3	7,051,129	141,023
69-0044-000	HOLDREGE PUBLIC SCHOOLS	3	11,918,628	238,373
69-0054-000	BERTRAND PUBLIC SCHOOLS	3	3,487,487	69,750
69-0055-000	LOOMIS PUBLIC SCHOOLS	2	2,386,106	47,722
70-0002-000	PIERCE PUBLIC SCHOOLS	3	6,559,579	131,192
70-0005-000	PLAINVIEW PUBLIC SCHOOLS	3	4,629,945	92,599
70-0542-000	OSMOND PUBLIC SCHOOLS	3	3,299,276	65,986
71-0001-000	COLUMBUS PUBLIC SCHOOLS	3	29,995,874	599,917
71-0005-000	LAKEVIEW COMMUNITY SCHOOLS	3	9,993,043	199,861
71-0067-000	HUMPHREY PUBLIC SCHOOLS	3	2,623,098	52,462
72-0015-000	CROSS COUNTY COMMUNITY SCHOOLS	3	5,146,543	102,931
72-0019-000	OSCEOLA PUBLIC SCHOOLS	3	3,121,253	62,425
72-0032-000	SHELBY-RISING CITY PUBLIC SCHOOLS	3	5,572,718	111,454
72-0075-000	HIGH PLAINS COMMUNITY SCHOOLS	3	3,718,030	74,361
73-0017-000	MC COOK PUBLIC SCHOOLS	3	14,869,151	297,383
73-0179-000	SOUTHWEST PUBLIC SCHOOLS	3	5,700,690	114,014
74-0056-000	FALLS CITY PUBLIC SCHOOLS	3	8,596,593	171,932
74-0070-000	HUMBOLDT TABLE ROCK STEINAUER	3	5,256,141	105,123
75-0100-000	ROCK COUNTY PUBLIC SCHOOLS	3	3,211,341	64,227
76-0002-000	CRETE PUBLIC SCHOOLS	3	15,833,362	316,667
76-0044-000	DORCHESTER PUBLIC SCHOOLS	3	3,423,842	68,477
76-0068-000	FRIEND PUBLIC SCHOOLS	3	3,120,148	62,403
76-0082-000	WILBER-CLATONIA PUBLIC SCHOOLS	3	6,091,373	121,827
77-0001-000	BELLEVUE PUBLIC SCHOOLS	3	78,413,690	1,568,274
77-0027-000	PAPILLION-LA VISTA PUBLIC SCHS	3	93,513,040	1,870,261
77-0037-000	GRETNA PUBLIC SCHOOLS	3	26,982,255	539,645
77-0046-000	SOUTH SARPY DIST 46	3	10,717,177	214,344
78-0001-000	ASHLAND-GREENWOOD PUBLIC SCHS	3	10,471,913	209,438
78-0009-000	YUTAN PUBLIC SCHOOLS	3	4,809,630	96,193
78-0039-000	WAHOO PUBLIC SCHOOLS	3	9,456,363	189,127
78-0072-000	MEAD PUBLIC SCHOOLS	3	2,748,479	54,970

2013/14 Additional Growth with 75% Board Vote		Class	2012/13 Budget Authority	2% Growth with 75% Board Vote
78-0107-000	CEDAR BLUFFS PUBLIC SCHOOLS	3	2,627,182	52,544
79-0002-000	MINATARE PUBLIC SCHOOLS	3	2,674,794	53,496
79-0011-000	MORRILL PUBLIC SCHOOLS	3	4,766,613	95,332
79-0016-000	GERING PUBLIC SCHOOLS	3	19,481,925	389,639
79-0031-000	MITCHELL PUBLIC SCHOOLS	3	7,051,775	141,036
79-0032-000	SCOTTSBLUFF PUBLIC SCHOOLS	3	25,778,926	515,579
80-0005-000	MILFORD PUBLIC SCHOOLS	3	8,088,029	161,761
80-0009-000	SEWARD PUBLIC SCHOOLS	3	14,353,138	287,063
80-0567-000	CENTENNIAL PUBLIC SCHOOLS	3	5,406,876	108,138
81-0003-000	HAY SPRINGS PUBLIC SCHOOLS	3	2,090,081	41,802
81-0010-000	GORDON-RUSHVILLE PUBLIC SCHS	3	8,127,858	162,557
82-0001-000	LOUP CITY PUBLIC SCHOOLS	3	4,918,346	98,367
82-0015-000	LITCHFIELD PUBLIC SCHOOLS	2	2,183,612	43,672
83-0500-000	SIOUX COUNTY PUBLIC SCHOOLS	3	2,345,610	46,912
84-0003-000	STANTON COMMUNITY SCHOOLS	3	5,013,409	100,268
85-0060-000	DESHLER PUBLIC SCHOOLS	3	3,161,366	63,227
85-0070-000	THAYER CENTRAL COMMUNITY SCHS	3	5,399,523	107,990
85-2001-000	BRUNING-DAVENPORT UNIFIED SYS	2	3,188,863	63,777
86-0001-000	THEDFORD PUBLIC SCHOOLS	2	3,200,473	64,009
87-0001-000	PENDER PUBLIC SCHOOLS	3	4,332,241	86,645
87-0013-000	WALTHILL PUBLIC SCHOOLS	3	3,736,470	74,729
87-0016-000	UMONHONNATION PUBLIC SCHS	3	4,732,348	94,647
87-0017-000	WINNEBAGO PUBLIC SCHOOLS	3	5,691,529	113,831
88-0005-000	ORD PUBLIC SCHOOLS	3	6,023,312	120,466
88-0021-000	ARCADIA PUBLIC SCHOOLS	2	2,094,027	41,881
89-0001-000	BLAIR COMMUNITY SCHOOLS	3	19,932,344	398,647
89-0003-000	FORT CALHOUN COMMUNITY SCHS	3	5,826,906	116,538
89-0024-000	ARLINGTON PUBLIC SCHOOLS	3	6,540,788	130,816
90-0017-000	WAYNE COMMUNITY SCHOOLS	3	9,117,763	182,355
90-0560-000	WAKEFIELD PUBLIC SCHOOLS	3	5,124,260	102,485
90-0595-000	WINSIDE PUBLIC SCHOOLS	3	2,843,878	56,878
91-0002-000	RED CLOUD COMMUNITY SCHOOLS	3	3,255,915	65,118
91-0074-000	BLUE HILL PUBLIC SCHOOLS	3	4,364,895	87,298
92-0045-000	WHEELER CENTRAL SCHOOLS	3	2,358,552	47,171
93-0012-000	YORK PUBLIC SCHOOLS	3	10,887,234	217,745
93-0083-000	MC COOL JUNCTION PUBLIC SCHS	2	3,577,839	71,557
93-0096-000	HEARTLAND COMMUNITY SCHOOLS	3	4,450,826	89,017

Nebraska Department of Education  
School Finance & Organization Services

**Template Request for Additional 2% General Fund Growth  
With 75% Board Vote**

(Current Date)

Nebraska Department of Education  
School Finance & Organization Services  
301 Centennial Mall South  
PO Box 94987  
Lincoln NE 68509

RE: 2013-14 Additional 2% General Fund Growth  
(Name of School District)

The school district is requesting approval from the State Board of Education for the Expenditure Exclusion to access up to an amount equal to 2% of the district's 2012/13 Certified General Fund Budget Authority. Upon State Board Approval, the school district will access additional 2% General Fund Growth in the amount of \$ \_\_\_\_\_. This amount is based on the district's 2012/13 Certified Budget Authority of \$ \_\_\_\_\_.

The motion to approve the access of this expenditure exclusion for additional budget authority was approved by 75% of the school board on \_\_\_\_\_.

Attached are the board minutes documenting the 75% board approval.

Sincerely,

(Name of Superintendent)



## **AGRICULTURAL ACADEMY INTERLOCAL AGREEMENT**

This Interlocal Agreement (“Agreement”) is made and entered into under the provisions of the Nebraska Interlocal Cooperation Act, NEB. REV. STAT. §§ 13-801 to 13-827, between Seward County School District 80-0567, commonly known as Centennial Public Schools (“Centennial”), Seward County School District 80-0009, commonly known as Seward Public Schools (“Seward”), and York County School District 93-0012, commonly known as York Public Schools (“York”). The parties are referred to collectively as “Districts.”

WHEREAS, the Districts are political subdivisions of the State of Nebraska pursuant to Chapter 79, Reissue Revised Statutes of Nebraska, as amended;

WHEREAS, NEB. REV. STAT. §79-748 encourages schools to develop public-private partnerships and the Districts desire to establish an Agricultural Academy through such partnerships;

WHEREAS, the Districts desire to make the most efficient use of their taxing authority and other powers to enable them to cooperate with each other and other entities as further agreed on the basis of mutual advantage to provide goods, services, and facilities in a manner and pursuant to forms of governmental organization that will accord the best results in terms of geographic, economic, population, and other factors that will influence the needs and development of the Districts;

WHEREAS, the Districts have passed resolutions authorizing each District to approve and enter into this Agreement;

NOW, THEREFORE, in consideration of the mutual covenants contained herein, it is agreed by the parties as follows:

- 1. No Separate Legal Entity.** This Agreement does not establish a separate legal or joint entity.
- 2. Purpose.** The purposes of this Agreement are as follows:
  - A. To enhance the Districts’ curricular and non-curricular offerings and to make increased educational opportunities available to the students;
  - B. To create an Agricultural Academy (“Academy”) for the benefit of the Districts and its students through the formation of partnerships with

- private entities that are primarily agriculturally focused; and
- C. To enter into any arrangements that are desirable or necessary for the Academy, including but not necessarily limited to providing a site for the Academy, staffing the Academy, and equipping and furnishing the Academy.

**3. Term.** This Agreement shall have a term of 4 year(s), commencing on September 1, 2013 and ending on August 31, 2017. Subsequently, after the initial four (4) year term, this Agreement shall automatically renew from year to year for an additional one-year term unless one of the Districts gives written notice to the others on or before March 1<sup>st</sup> of its intention to terminate it at the conclusion of the then-current contract term.

**4. Administration.**

**A. Board.** This Agreement shall be administered by the Academy Board ("Board") which shall consist of the Superintendent from each of the Districts.

**B. Powers.** The Board may take any action authorized, either explicitly or implicitly, by the Interlocal Cooperation Act, including any action that may be necessary to perform the duties and functions as provided in this Agreement.

**C. Term.** Each Board member shall serve for so long as he or she holds the position of Superintendent.

**D. Voting.** Unless the Board unanimously adopts different rules relating to voting by Board members, each Board member shall have one vote on matters before the Board. Except as otherwise provided in this Agreement, all actions of the Board may be taken with the concurrence of a majority of the Board members entitled to vote.

**E. Quorum.** A majority of all members of the Board shall constitute a quorum for the transaction of any business.

**F. Officers.** The Board may elect a chairperson and any other officers it desires from its Board members.

**G. Meetings and Notice.** Meetings may be called by any one member of the Board. Written or electronic notice of the meeting and agenda shall be provided to each Board member at least 5 days prior to any meeting.

**5. Employment of Teacher.**

- A. York shall employ a teacher for the Academy on a full-time or part-time basis as determined by the Board. York shall be responsible for paying the teacher's salary and providing fringe benefits in accordance with its negotiated agreement with the York Education Association and/or its policies. The Districts (or their foundations, if any) expect to receive donations from private entities to fund the cost of the teacher, and such private donations shall first be used to reimburse York (or its foundation) for any teacher-related costs and expenses. In the event that private donations are insufficient to pay all teacher-related costs and expenses, the Districts shall share the total remaining cost of the teacher equally, including but not limited to salary or compensation, state and federal taxes, retirement, and mileage (if any). Centennial and Seward shall reimburse York for the cost of the teacher no later than York's last day of each semester unless agreed otherwise in writing.
- B. The York Superintendent shall have the general responsibility for supervising and overseeing teacher's work; for seeing to the payment of teacher's salary and fringe benefits; for administering appropriate discipline; for adjusting teacher's grievances; and for managing and supervising teacher in accordance with York's policies and subject to the direction of its Board of Education.

**6. Teacher Not a Third-Party Beneficiary.** The teacher is not a third-party beneficiary of this Agreement, and it creates no enforceable rights in favor of the teacher.

**7. No Joint Employment.** This Agreement shall not make the Districts joint employers of the teacher for purposes of workers' compensation, unemployment compensation, liability, or any other purpose.

**8. Provision of Classroom, Books and Instruments.** Each District shall be responsible for providing such books and materials as may be necessary for its own students. In the event that an Academy classroom is not provided by a private entity or additional classrooms are necessary, the Board shall make appropriate arrangements for such classroom(s). In the event that a District provides the classroom(s), it shall be at no charge to the other Districts.

**9. Transportation.** Each District shall be responsible for providing or arranging transportation for its students.

**10. Manner of Acquiring, Holding, and Disposing of Real and Personal Property.** The Districts do not anticipate a need to acquire, hold, or dispose of real property to accomplish the purposes of this Agreement. The Districts' respective boards of education shall determine the manner of acquiring, holding, or disposing of real property in the event that such a need arises. In no event shall the Board have the authority to acquire real property on behalf of the Districts. The Board shall have the authority to acquire and hold any personal property that is needed or required for the implementation of any purpose of this Agreement. The title to all such personal property shall be held in the name of York for the benefit of all Districts. York shall have the authority to dispose of such personal property, provided that (a) any such disposal shall comply with Neb. Rev. Stat. § 79-10,114, and (b) any funds raised from such sale shall be equally shared by or credited to each District.

**11. Financing and Budgeting.** This Agreement shall be financed, at least in part, by private donations or other non-District funds and, if necessary, by equal contributions from the Districts. The Board shall prepare a budget based on a fiscal year coinciding with the fiscal years of the Districts.

**12. Expenses.** Unless provided otherwise herein, all expenses of this Agreement not payable from proceeds received from private entities shall be shared and paid equally by the Districts.

**13. Taxes.** This Agreement does not grant the Districts any authority to levy, collect, or account for any tax authorized under sections 13-318 through 13-326 or 13-2813 through 2816.

**14. Nondiscrimination.** The Districts shall not discriminate against any employee or applicant who is to be employed for performance of this Agreement with respect to his or her hire, tenure, terms, conditions, or privileges of employment, because of his race, color, religion, sex, disability, or national origin.

**15. Employment Eligibility Verification.** The Districts shall use a federal immigration verification system to determine the work eligibility status of employees hired on or after October 1, 2009 and who are physically performing services within the State of Nebraska. If a District employs or contracts with any subcontractor in connection with this Agreement, the District shall include a provision in the contract requiring the subcontractor to use a federal immigration

verification system to determine the work eligibility status of new employees physically performing services within the State of Nebraska.

**16. Termination.** This Agreement may be terminated only by a unanimous vote of the Districts' respective boards of education. Any funds contributed to or for the benefit of the Academy in possession of any of the Districts upon termination of this Agreement shall be divided equally by the districts. Any other personal property owned by any of the Districts as a result of this Agreement shall be the property of the District that purchased it. In the event that the cost of the personal property was shared equally by the Districts, the property shall be liquidated or distributed in kind upon the termination of this Agreement. If a dispute arises between the Districts as to the value of such property or as to how it will be distributed, such property shall be sold by taking bids at public auction and selling said property to the highest bidder with the proceeds therefrom being divided equally by the Districts.

**17. Withdrawal.** A District's board of education may withdraw from this Agreement by passing a resolution and submitting a copy of it to every other District at least 60 days in advance of the stated date of withdrawal. Withdrawal shall not impair a District's obligation for its share of any outstanding indebtedness.

**18. Liability Insurance.** Each District shall obtain and pay for its own liability insurance coverage for their participation in this Agreement.

**19. New Members.** The Districts may add school districts to this Agreement by unanimous consent of the then current member Districts. The Board shall establish the fees, costs, charges, assessments, and other conditions required for participation by the new member District.

**20. Notice.** Each District giving any Notice ("Notice") under this Agreement must give written Notice by personal delivery, registered or certified Mail (in each case, return receipt requested and postage prepaid), or electronic mail (to the District's then Superintendent at the e-mail address maintained by the Nebraska Department of Education, with receipt confirmed). Notice shall be sent to the following addressees at the following addresses:

Centennial: Centennial Public Schools  
Attn: Superintendent  
1301 Centennial  
Utica, NE 68456-0187

Seward: Seward Public Schools  
Attn: Superintendent  
410 South Street  
Seward, NE 68434-2541

York: York Public Schools  
Attn: Superintendent  
2918 N. Delaware Ave.  
York, NE 68467-9502

With copy to:

Steve Williams, Legal Counsel  
Harding & Shultz, P.C., L.L.O.  
P.O. Box 82028  
Lincoln, NE 68501-2028  
swilliams@hslegalfirm.com

Notice is effective only if the party giving the Notice has complied with this section.

**21. Amendments and Modifications.** The Districts may amend or modify this Agreement only by a signed, written unanimous agreement by all parties that identifies itself as an amendment or modification to this Agreement. No other alterations in the terms of this agreement shall be valid or binding.

**22. Severability.** If any provision of this Agreement is determined to be unenforceable, the remaining provisions of this Agreement shall remain in full force, if the essential terms and conditions of this Agreement for each party remain enforceable.

**23. Counterparts.** The Districts may execute this Agreement in multiple counterparts, each of which constitutes an original, and all of which, collectively, constitute only one agreement. The signatures of all of the Districts need not appear on the same counterpart, and delivery of an executed counterpart

signature page by facsimile or other electronic means is as effective as executing and delivering this Agreement in the presence of the other Districts to this Agreement. This Agreement is effective upon delivery of one executed counterpart from each District to the other Districts. In proving this Agreement, a District must produce or account only for the executed counterpart of the District to be charged.

**24. Assignment.** The Districts shall not assign or otherwise dispose of this Agreement or any duty, right, or responsibility contemplated in this Agreement to any other person or entity without the previous written consent of each of the other Districts.

**25. Entire Agreement.** The Agreement is the complete and exclusive expression of the Districts' agreement on the matters contained in this Agreement. All prior and contemporaneous negotiations and agreements between the Districts on the matters contained in this Agreement are expressly merged into and superseded by this Agreement.

**SEWARD COUNTY SCHOOL DISTRICT 80-0567,  
A/K/A AS CENTENNIAL PUBLIC SCHOOLS**

\_\_\_\_\_  
President, Board of Education

Date: \_\_\_\_\_, 2013

**SEWARD COUNTY SCHOOL DISTRICT 80-0009,  
A/K/A SEWARD PUBLIC SCHOOLS**

\_\_\_\_\_  
President, Board of Education

Date: \_\_\_\_\_, 2013

**YORK COUNTY SCHOOL DISTRICT 93-0012,  
A/K/A YORK PUBLIC SCHOOLS**

\_\_\_\_\_  
President, Board of Education

Date: \_\_\_\_\_, 2013

# Benchmark<sup>®</sup> – Easy Application, Superior Protection

Benchmark is sprayed or rolled over the following approved roof deck: metal, sprayed polyurethane foam (SPF), plywood, isocyanurate insulation board, and oriented strand board (OSB). With proper primer application, Benchmark can also be applied over asphalt built-up roofing.

## Specifications

<b>Elongation</b>	338% (base and top coats combined)	ASTM D-412
<b>Tensile Strength</b>	410 psi (base and top coats combined)	ASTM D-412
<b>Flexibility</b>	1/8" Mandrel Bend at -40° F	ASTM D-1737
<b>Accelerated Weathering</b>	2,000 hrs under 5X magnification – no cracking, checking, crazing, chalking, or erosion	ASTM G-23
<b>Fire Rating*</b>	UL-790 Class "A," combustibile and non-combustibile decks	
<b>Hail Rating</b>	Class 4 Severe Hail	UL TGFU.R8435 FM 4470
<b>Solar Reflectivity</b>	85%	ASTM E-903
<b>Base Coat Thickness</b>	13.5 dry mils	
<b>Top Coat Thickness</b>	13.5 dry mils	
<b>Drying Time</b>	2-8 hours (depending on humidity, temperature, UV exposure and wind)*	

\*Refer to Underwriters Laboratories Roofing Materials and Systems directory for specific fire resistance assemblies or contact Conklin Roofing Systems.

## Optional Warranty Program

Our optional warranty programs for your new Conklin Roofing System include limited material and manufacturer-backed labor and materials warranties up to 15 years. Contact your Conklin roofing contractor for more information.



Conklin is a charter member of the Energy Star Program. Benchmark meets the criteria established by EPA/DOE for energy efficiency and reflectivity.



Benchmark meets the requirements of reflectivity and emissivity for inclusion in the CRRC program.

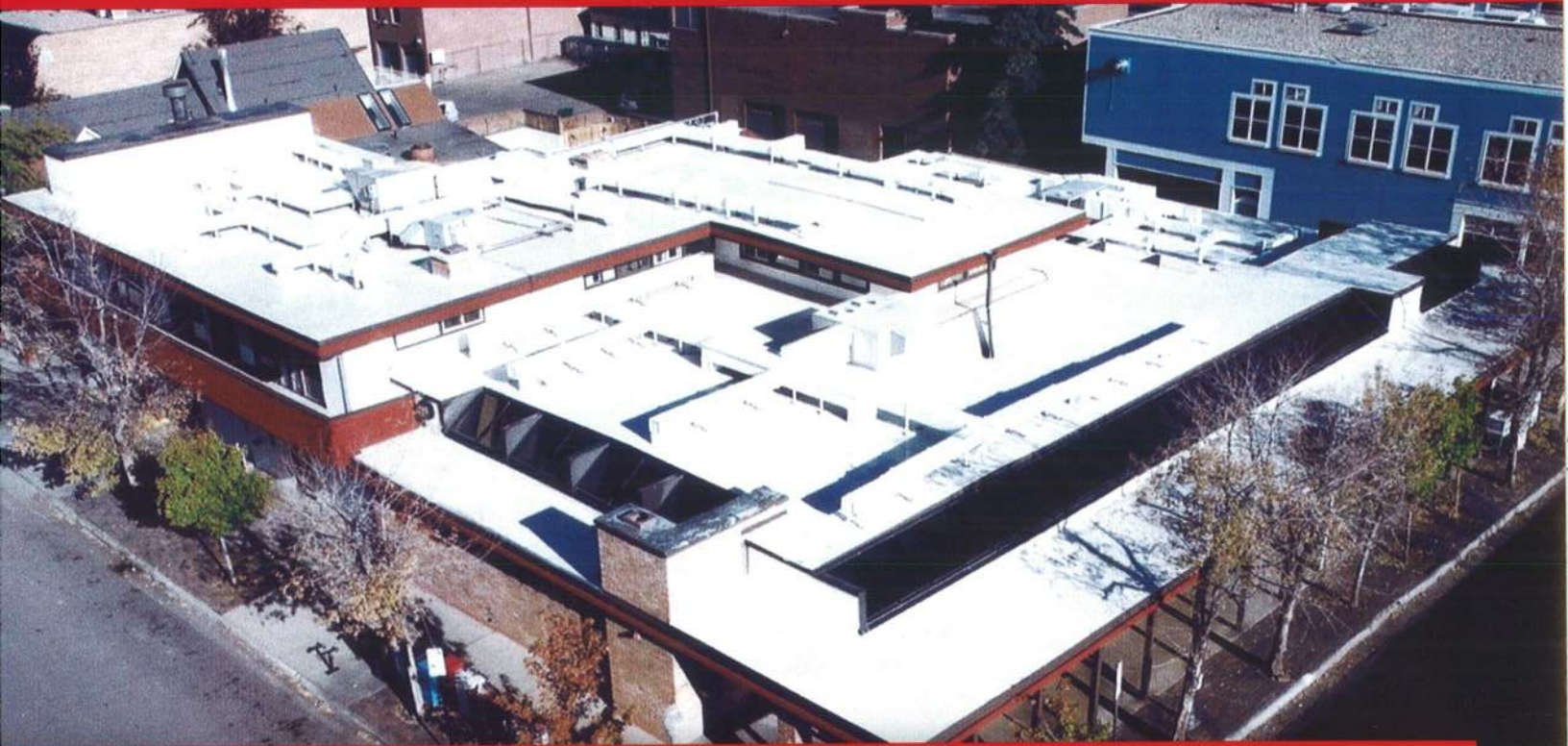


Benchmark has achieved a UL-790 "Class A" Fire Rating, an FM-4470 "Class A" rating for fire and is approved under Miami-Dade NOA 08-0917.08, ICC ER-5203, and Florida State approval 7033.



Learn more about Conklin Roofing Systems by contacting the Conklin Contractor below for a roof inspection and a quote.

# Benchmark® Premier Roof Coating



## Benchmark Sets the Standards for Superior Protection

- Strength** — Benchmark's super tensile strength makes it highly resistant to acid rain, air pollutants, and UV rays
- Durability** — Exceptional elongation gives Benchmark the flexibility to withstand building movement
- Value** — Benchmark has 85% solar reflectivity, which reduces cooling costs

Benchmark exceeds other acrylic-based products on the market today because it combines high tensile strength and exceptional elongation, earning a Class 4 hail rating and providing long-term performance you can count on. If you set your standards high, put your trust in Benchmark!

### Features

- Completely seamless membrane for exceptional waterproofing
- Water-based formula for easy clean-up
- Low VOC emissions to help protect the environment
- Superior dirt resistance keeps reflectivity high longer

Benchmark is formulated for use with the following Conklin Roofing Systems:

- MR® System for metal roofs
- Fabric-Reinforced
- Spray Polyurethane Foam (SPF)

Tillotson Enterprises, Inc.  
 4755 N. 48th Suite E  
 Lincoln, NE 68504  
 Phone 877-855-2944  
 Fax 402-466-0305

**TILLOTSON ENTERPRISES**  
 SPRAY APPLICATIONS

ROOFING  
 COATINGS  
 INSULATION

Contract # 4  
 Date: July 3, 2013  
 Page 1 of 1  
 5,200 Square feet of roof  
 5,616 Square feet of metal surface  
 Sales Person Dan Zysset

Bid # 0703 146 DZL

TO: Centennial Public Schools Mike Wright P.O. Box 187 Utica NE 68456	Job name and/or location Centennial Public Schools BUS BARN 5th & E St. Utica NE 68456
PHONE: CELL	Job Phone: Cell Phone:
FAX:	

We hereby submit specifications and estimates for: installing Conklin's Benchmark MR SYSTEM.

1. SURFACE PREPARATION: Power wash entire roof surface.
2. SECURE METAL SHEETS: Tighten sheet metal and replace missing screws.
3. APPLY METAL READY: Rust inhibitor - where necessary
4. PATCH BREAKS ON TIN: Where tin is broken, reinforce with tin, caulk and screws.
5. SEAL AROUND PENETRATIONS THROUGH ROOF: Seal with coating and fabric around every penetration and add roof curbs where needed to avoid water ponding.
6. CAULKING: Caulk over the top of the screws with a special fastener grade Kwick Kaulk or base coat, this puts a seal around the neoprene washer that cracks.
7. BASE COAT AND FABRIC: Benchmark Base will be applied over all seams, both vertical and horizontal, we use 2-inch Spunflex, a polyester membrane to reinforce vertical seams and 5-inch Spunflex to reinforce horizontal seams. The seams are then embedded into a coating of base coat and more coating is applied on top of the Spunflex membrane.
8. COAT ENTIRE ROOF WITH BENCHMARK TOP COAT: Benchmark Top Coat is used to provide a uniform appearance to the roof with a coverage rate of approximately 1.9 gallons per square.  
 Finished color of the roof to be White  
 Install the above system in accordance with Conklin's specifications.

\*Add \$360.00 to contract price to seal 24 seams in gutters.  
 \*\*Labor and material warranty does not apply to repairs made to gutters.  
 Total average dry mils plus fabric over seams is 48 Mils+ and 13.5 Dry mils in the field metal  
 Elongation 338% Tensile Strength 410 psi

WARRANTY: 12 year "leak free" material warranty and 12 year "leak free" labor warranty. (Non pro-rated.)  
 \* This roof has a twenty year life expectancy  
 RENEWABLE WARRANTY: An additional 12 year warranty can be renewed at the end of the first 12 year period with an inspection and re-coat. The roof should be re-coated between the 16 th year and the 20 th year. The warranty can be renewed after each re-coat, and if it is re-coated on a regular basis, the roof may never need to be re-roofed again.

Any alteration or deviation from above specification involving extra costs, will be executed only upon written orders, and will become an extra charge over and above the estimate. Owner to carry fire, tornado and other necessary insurance on above work. Workmen's compensation and public liability insurance on above work to be taken out by Tillotson Enterprises, Inc. Tillotson Enterprises, Inc. is not responsible for any existing or future damage due to mold or mildew. Late payments can void warranty.

We hereby propose to furnish material and labor - in accordance with the above specifications, for the sum of:  
 ELEVEN THOUSAND EIGHT HUNDRED SIXTEEN DOLLARS AND 00 CENTS \$11,816.00

Payment to be made as follows: 50% at job start and 50% within 30 days upon completion of the project. Delinquent payment, upon any work completed, shall bear interest at 1.3% per month from date of completion, and, if suit is filed to enforce payment, owner will pay reasonable attorney fees and court cost.  
 1st payment \$5,908.00 2nd payment \$5,908.00  
 Date paid Date paid

Acceptance of the Proposal. The above prices, specifications and conditions are satisfactory and are hereby accepted. You are authorized to do the work as specified. Payment will be made as outlined above.	We agree to furnish the above items and conditions herein contained. All agreements contingent upon strikes, Acts of God, or other causes beyond our control.
---	---

Date of Acceptance: \_\_\_\_\_  
 Purchaser \_\_\_\_\_  
 This contract price is void after 30 days  
 Contractor \_\_\_\_\_



Tillotson Enterprises, Inc.  
 4755 N. 48th Suite E  
 Lincoln, NE 68504  
 Phone 877-855-2944  
 Fax 402-466-0305

**TILLOTSON ENTERPRISES**  
 SPRAY APPLICATIONS

ROOFING  
 COATINGS  
 INSULATION

Contract # 9  
 Date: July 3, 2013  
 Page 1 of 1  
 5,200 Square feet of roof  
 5,616 Square feet of metal surface  
 Sales Person Dan Zysset

Bid # 0703 146 DZL

TO: Centennial Public Schools Mike Wright P.O. Box 187 Utica NE 68456	Job name and/or location Centennial Public Schools BUS BARN 5th & E St. Utica NE 68456
PHONE: FAX:	Job Phone: Cell Phone:

We hereby submit specifications and estimates for: installing United Roof Mate MR SYSTEM.

1. SURFACE PREPARATION: power wash entire roof surface.
2. SECURE METAL SHEETS: Tighten sheet metal and replace missing screws.
3. APPLY ACRYLEX 400: Rust inhibitor where necessary
4. PATCH BREAKS ON TIN: Where tin is broken, reinforce with tin, caulk and screws.
5. SEAL AROUND PENETRATIONS THROUGH ROOF: Seal with coating and RM fabric around every penetration and add roof curbs where needed to avoid water ponding
6. CAULKING: Caulk over the top of the screws with a Roof Mate butter gade or base coat, this puts a seal around the neoprene washer that cracks.
7. BASE COAT AND FABRIC: Roof Mate Base will be applied over all seams, both vertical and horizontal, we use 2-inch RM fabric, a polyester membrane to reinforce vertical seams and 6-inch RM fabric to reinforce horizontal seams. The seams are then embedded into a coating of base coat and more coating is applied on top of the RM fabric membrane.
8. COAT ENTIRE ROOF WITH ROOF MATE TOP COAT: Roof Mate Top Coat is used to provide a uniform appearance to the roof with a coverage rate of approximately 1.75 gallons per square.  
 Finished color of the roof to be White  
 Install the above system in accordance with United specifications.

\*Add \$360.00 to contract price to seal 24 seams in gutters.

\*\*Labor and material warranty does not apply to repairs made to gutters.

Signature

Total dry mils plus fabric over seams is 46 Mils+ and 12 Dry mils in the field metal  
 Elongation 226% Tensile Strength 224 psi

WARRANTY: 10 year "leak free" material warranty and 10 year "leak free" labor warranty. (Non pro-rated.)

*\* This roof has a twenty year life expectancy*

RENEWABLE WARRANTY: An additional 10 year warranty can be renewed at the end of the first 10 year period with an inspection and re-coat. The roof should be re-coated between the 14 th year and the 18 th year. The warranty can be renewed after each re-coat, and if it is re-coated on a regular basis, the roof may never need to be re-roofed again.

Any alteration or deviation from above specification involving extra costs, will be executed only upon written orders, and will become an extra charge over and above the estimate. Owner to carry fire, tornado and other necessary insurance on above work. Workmen's compensation and public liability insurance on above work to be taken out by Tillotson Enterprises, Inc. Tillotson Enterprises, Inc. is not responsible for any existing or future damage due to mold or mildew. Late payments can void warranty.

We hereby propose to furnish material and labor - in accordance with the above specifications, for the sum of:  
 TEN THOUSAND NINE HUNDRED NINETY-TWO DOLLARS AND 00 CENTS \$10,992.00

Payment to be made as follows: 50% at job start and 50% within 30 days upon completion of the project. Delinquent payment on any work completed, shall bear interest at 1.3% per month from date of completion, and, if suit is filed to enforce payment, owner will pay reasonable attorney fees and court cost.

1st payment \$5,496.00	2nd payment \$5,496.00
Date paid	Date paid

**Acceptance of the Proposal.** The above prices, specifications and conditions are satisfactory and are hereby accepted. You are authorized to do the work as specified. Payment will be made as outlined above.

We agree to furnish the above items and conditions herein contained. All agreements contingent upon strikes, Acts of God, or other causes beyond our control.

Date of Acceptance: \_\_\_\_\_

*This contract price is void after 30 days*

Purchaser \_\_\_\_\_

Contractor \_\_\_\_\_



# Conklin MR System<sup>®</sup> for Metal Roofs



## Don't Replace Your Roof - Restore It!



*"The roof of our building was deteriorating with rust. Installing the Conklin MR roofing system extended the life of the roof. After installation we now enjoy a dry building. We also like the annual inspection as part of the Conklin warranty. It has been a good investment."*

Bill R., Owner  
Kidron Electric Inc.



## What is Metal Roof Restoration?

A complete waterproofing system for metal roofs that inhibits rust, stops leaks and provides an energy efficient, long-lasting and attractive finish coat for years of service. All seams are strengthened with fabric reinforcement embedded into our acrylic elastomeric roof coating. Exposed fasteners are sealed from the elements with premium caulking. The entire roof surface is protected with one of Conklin's industry-leading roof coatings. The system is an effective method for preserving an existing metal roof without the need for costly metal repair or replacement.

## What can this System do for you?

- Stop leaks at seams where they most occur
- Extend the life of your roof
- Overcome metal design flaws
- Reduce air conditioning costs

## Prevents leaks

The Conklin MR System<sup>®</sup> protects your metal roof from the elements with a highly-durable, seamless membrane. Stops leaks where they occur most by sealing all seams, fasteners and penetrations with a combination of the best acrylic elastomeric coatings on the market, strengthened with fabric reinforcement. This ensures that the elements cannot get to your most valuable items.

## Extend your roof's life

Conklin's MR Systems offer additional benefits beyond stopping leaks and inhibiting rust. Conklin highly-reflective roof coatings reduce the destructive thermal shock experienced by metal roofs during extreme fluctuations in temperature. This minimizes the amount of expansion and contraction experienced by the roof and greatly increases its useable life.

## Save money by saving energy

The highly-reflective coating also provides significant energy savings. By reflecting up to 85% of the sun's ultraviolet energy rather than absorbing it in the form of heat, Conklin ENERGY STAR roof coatings can drastically reduce cooling costs. The benefit can also be felt in a cooler workspace.

Our three exceptional roof coatings are designed to meet the needs of your particular project:

- Benchmark® offers the ultimate in flexibility and strength
- Rapid Roof III® is the workhorse of the Conklin line
- Rapid Roof HV delivers Conklin quality without the costly code approvals and fire ratings

## Tested. Proven. Trusted.

Conklin Roofing Systems have been tested, proven and trusted by building owners nationwide since 1977. Our systems are tested and approved by major code approval agencies, such as Factory Mutual (FM) and Underwriters' Laboratories (UL). Architects, specifiers, building owners and facility managers around the country rely on Conklin Roofing Systems to protect the valuable contents of their buildings.

## Affordable quality

Conklin Metal Roofing Systems are designed to provide long-term performance at a fraction of the cost of metal replacement. Additionally, there are financial benefits to metal roof restoration systems. Metal roof restoration can be expensed as a repair or maintenance cost while roof replacement must be capitalized.

## Metal Roof System Application



1

Power wash and clean with Rust Off®.



2

Prime with Metal Ready® Universal.



3

Kwik Kaulk® all fastener heads.



4

Reinforce existing seams with Spunflex® or Butyl Tape and base coat.



5

Seal entire roof with one of our approved acrylic coatings:

- Rapid Roof® HV
- Bench Mark®
- Rapid Roof III®
- PUMA® XL
- Equinox®



6

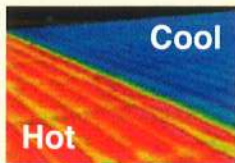
Completed project.



Photos courtesy of Bill Feland

*"We live in an area where the temperatures range from 25° below to 100° above zero, so the roof has a lot of movement and weather related stress. This process sealed our leaks, stopped the rusting and allows our students and staff to stay dry. We didn't know we were going to get increased energy efficiency when we started, but we are spending less to cool the building. We are going to have more of our buildings done with the MR System."*

Keith M., School Superintendent



Conklin's highly-reflective roof systems have been providing quality solutions to the roofing market since 1977.



Learn more about Conklin Roofing Systems by contacting the Conklin Contractor below for a roof inspection and a quote.

**Reference List**

<u>Business</u>	<u>City</u>	<u>State</u>	<u>Sq. Feet</u>	<u>Date Finish</u>	<u>Type of Roof</u>
BAE Systems	Aberdeen	SD	116,162	9/16/2005	FO
Stine Seeds	Adel	IA	1,308	3/18/2004	IF
City of Agra	Agra	KS	3,175	5/23/2012	MR
Kinder Morgan	Albion	NE	6,162	10/22/2010	MR
Leon Plastic	Alda	NE	111,435	7/1/1998	MR
Cargill	Alma	NE	11,578	10/8/2005	MR
Cargill	Alma	NE	6,588	5/7/2009	MR
Don Whitmire	Alma	NE	567	5/30/2009	DB
Hays Pharmacy	Alma	NE	2,288	5/30/2009	DB
Hays Pharmacy	Alma	NE	1,093	8/23/2010	Walls
Meyer Insurance Agency	Alma	NE	726	5/30/2009	DB
Richard Rentzell	Alma	NE	608	5/30/2009	DB
Waggoner Insurance Agency	Alma	NE	1,081	5/30/2009	DB
Hays Pharmacy	Alma	NE	72	5/22/2012	Repair
Agri Services	Alma	NE	8,294	6/7/2012	MR
Gene Vebeek	Ames	NE	924	9/1/1996	RC
Todd Sargent	Ames	NE	2,322	9/1/1997	MR
Universal Harvester Co	Ames	IA	21,533	10/10/2005	MR
Universal Harvester Co	Ames	IA	8,211	10/10/2005	FO
Cenex	Anselmo	NE	1,512	6/3/2008	MR
Absolute Plumbing	Ansley	NE	2,050	10/30/2008	FO
Coble Construction	Ansley	NE	2,576	11/14/2011	FO
Jilg Construction	Ansley	NE	1,240	10/26/2011	IF
Joe Miler	Ansley	NE	1,378	7/26/2007	FO
Light Plant	Ansley	NE	2,894	7/25/2007	FO
Merry Sunshine	Ansley	NE	50	8/3/2011	RC
Nebraska Pump & Pipe	Ansley	NE	2,856	8/29/2004	FO
Nebraska Pump & Pipe	Ansley	NE	3,200	10/26/2004	RC
Nebraska Pump & Pipe	Ansley	NE	1,536	7/25/2007	FO
Village of Ansley	Ansley	NE	3,153	5/8/2005	FO
Village of Ansley	Ansley	NE	9,315	7/26/2011	RC
Arapahoe-Holbrook Public School	Arapahoe	NE	4,374	6/20/2008	MR
ATC Communications	Arapahoe	NE	2,500	7/24/2010	IF
Jack Bellamy	Arapahoe	NE	3,256	10/20/2010	RC
Russ Carlson	Arapahoe	NE	1,720	11/29/2011	IF
Arcadia American Legion	Arcadia	NE	5,238	9/6/2007	MR
Bruce Ohme	Arcadia	NE	1,668	6/11/2008	MR
Arnold Medical	Arnold	NE	2,260	8/11/2003	RC
Brad Forrester	Arnold	NE	2,106	7/19/2007	RC
Forrester Dodge	Arnold	NE	18,046	7/19/2007	RC
Gifts & Essentials	Arnold	NE	2,850	7/19/2007	RC
Jim Bar	Arnold	NE	2,726	7/20/2003	RC
Kiwi Café	Arnold	NE	4,218	7/19/2007	RC
Neil Coleman	Arnold	NE	1,341	7/19/2007	RC
Pat Crow	Arnold	NE	2,592	6/28/2011	MR
Pretty Petals	Arnold	NE	3,303	7/19/2007	RC
J & M Partnership	Ault	CO	10,000	9/2/2003	FO

Aurora Coop	Aurora	NE	486	2/2/2002	Repair
Chief Construction	Aurora	NE	2,174	9/19/2009	
Chief Custom Homes	Aurora	NE	640	4/12/2010	IF
Gale Worth	Aurora	NE	2,674	11/16/2010	Alumify
Hamilton Telecommunication	Aurora	NE	1,624	4/1/1996	FO
Hamilton Telecommunications	Aurora	NE	7,426	11/2/2010	MR
Hamilton Telecommunications	Aurora	NE	1,386	11/2/2010	RC
IAMS	Aurora	NE	7,273	6/1/1996	MR
IAMS	Aurora	NE	11,620	9/28/2001	MR
IAMS	Aurora	NE	496	4/18/2005	Repair
IAMS	Aurora	NE	5,650	5/18/2010	MR
IAMS	Aurora	NE	1,054	6/5/2010	DB
IAMS	Aurora	NE	7,795	6/9/2010	
IAMS	Aurora	NE	1,800	7/13/2010	MR
IAMS (Chief)	Aurora	NE	353 feet	8/29/2006	Gutter
IAMS (dry cool roof)	Aurora	NE	1,219	6/6/2004	HC
IAMS (lab)	Aurora	NE	2,000	11/16/2004	FO
Kiner Inc	Aurora	NE	230	1/7/2011	FO
Leadership Center (Gym)	Aurora	NE	5,830	10/24/2003	FO
P & G	Aurora	NE	Repair	9/19/2009	Repair
Pleasant Hill Grain	Aurora	NE	454	11/15/2011	RC
PMI Nebraska LLC	Aurora	NE	50	12/16/2011	MR
Roger Goertzen	Aurora	NE	3,418	7/3/2009	MR
Sodexo	Aurora	NE	1,899	7/20/2011	DB
Sodexo	Aurora	NE	442	11/10/2011	DB
The Leadership Center	Aurora	NE	427	5/26/2001	FO
The Leadership Center	Aurora	NE	945	8/24/2006	FO
The Leadership Center	Aurora	NE	1,055	8/19/2010	Rec/FO
Tod Olsen	Aurora	NE	30	7/1/2009	DB
Wieser Brothers	Aurora	NE	3,888	5/26/2011	MR
Brian Sonnenfeld	Aurora	NE	126	4/5/2012	IF
Sodexo	Aurora	NE	16	4/6/2012	Repair
Sodexo	Aurora	NE	50	5/16/2012	Repair
Sodexo	Aurora	NE	2,200	5/18/2012	FO
Farmers Coop	Avon	SD	6,172	9/21/2010	MR
Farmers Coop	Avon	SD	2,371	9/21/2010	FO/Rec
Berggren Machine Shop	Axtell	NE	2,190	9/1/2007	MR
Josh Cedenburg	Axtell	NE	79	1/29/2009	IF
Kim Shaw	Axtell	NE	244	8/31/2009	Ply
MOSIAIC	Axtell	NE	3,750	6/5/2009	FO
Pat Ryan	Axtell	NE	4,605	5/27/2010	MR
Rodney Wendell	Axtell	NE	1,342	5/22/2008	Ply
Lee Grove	Axtell	NE	6,127	1/18/2013	IF
Dave Fredrick	Ayr	NE	2,694	7/8/2008	MR
Dennis Eckhardt	Ayr	NE	2,862	7/26/2007	MR
Range Café and Hotel	Bassett	NE	8,867	7/12/2007	FO
Larry Delabar	Beatrice	NE	1,717	6/6/2011	MR
SJM Inc.	Beatrice	NE	7,576	10/7/2011	FX
Stan Inc.	Beatrice	NE	33,152	7/23/2002	HC
Lori Porter	Beatrice	NE	437	5/9/2012	MR
Rolla-Rena	Beatrice	NE	13,707	5/16/2012	MR
Ralph Fischer	Beatrice	NE	681	8/14/2012	RC

Ralph Fischer	Beatrice	NE	192	9/22/2012	DB
Jon Youngquist	Beaver City	NE	1,688	3/16/2012	IF
The Thrift Shop	Beaver City	NE	1,575	8/30/2007	RC
Paul Smith	Beaver City	NE	120	6/25/2012	Ply
The Thrift Shop	Beaver City	NE	1,512	9/18/2012	FO
Strayer Motor Company	Beaver City	NE	3,759	11/10/2012	FO
Lou & Mary Anne's Bar	Bee	NE	40	11/8/2010	Repair
Lou & Mary Anne's Bar	Bee	NE	1,542	9/7/2011	FO
Marvin Coufal	Bee	NE	1,344	9/18/2009	IF
Stanley Benes	Bee	NE	2,610	9/18/2009	FO/MT
Belleville Masonic Lodge	Belleville	KS	4,645	7/2/2006	MR
Moore-Built Inc	Benedict	NE	7,909	9/17/2009	MR
Clayton Maahs	Bennett	NE	12	11/8/2012	Repair
Doyle Benson	Bertrand	NE	760	1/20/2009	IF
Jack Bowan	Bertrand	NE	900	Bertrand	IF
Lyle Samuelson	Bertrand	NE	2,160	5/28/2010	MR
NCS	Bertrand	NE	360	1/14/2011	IF
Rick Lundy	Bertrand	NE	4,800	11/4/2008	FO
Rick Lundy	Bertrand	NE	5,184	11/4/2008	MR
Rick Lundy	Bertrand	NE	4,816	4/11/2011	IF
Agri Services	Bertrand	NE	4,612	7/3/2012	MR
Wright Insurance	Bird City	KS	1,705	4/29/2004	FO
John Kinley	Bladen	NE	2,878	10/29/2011	MR
Silver Lake Bladen Public School	Bladen	NE	444	7/31/2009	FO
Silver Lake Bladen Public School	Bladen	NE	150	10/31/2011	FO
Timm's Service	Bladen	NE	4,255	8/29/2009	MR
Keith Buschow	Blue Hill	NE	320	10/29/2009	DB
RP's Body Shop	Blue Hill	NE	6,741	11/6/2009	FO/IF
Lonnie Lipsack	Blue Hill	NE	1,901	9/5/2012	MR
Clarence Oltmans	Blue Springs	NE	2,088	11/5/2011	FO
Agricultural Services	Boelus	NE	2,340	8/27/2005	RC
James Richerson Trucking	Boscobel	WI	1,283	9/20/2010	FO
Bradshaw Rural Fire Dept	Bradshaw	NE	3,055	5/16/2001	MR
Jay Schlechte	Bradshaw	NE	3,313	7/2/2010	MR
Sid Johnson	Bradshaw	NE	7,128	6/7/2012	MR
Arnold Vandenberg	Brainard	NE	655	1/4/2012	IF
Classic Cuts	Brainard	NE	720	8/11/2010	FO
Henry Pittz	Brainard	NE	40	8/11/2010	FO
Lonnie Pittz	Brainard	NE	108	8/11/2010	FO
Tony Hottovy	Brainard	NE	75	7/18/2012	FO
Craig Jelinek	Brainard	NE	6,105	2/7/2013	IF
Anson Bumgamer	Broken Bow	NE	1,264	1/4/2011	IF
Arrow Seed	Broken Bow	NE	5,229	8/1/2008	RC
Arrow Seed	Broken Bow	NE	1,108	8/21/2010	MR/DB
Arrow Seed	Broken Bow	NE	6,108	8/4/2011	MR
Bill Doty	Broken Bow	NE	348	6/10/2008	MR
Bow Booterie	Broken Bow	NE	2,853	7/30/2008	RC
Cathy Province	Broken Bow	NE	950	4/14/2010	IF
Community Connections	Broken Bow	NE	594	11/14/2011	FO
Darwin Rosentrater	Broken Bow	NE	1,400	6/22/2011	MR
Elton McCandless	Broken Bow	NE	583	8/4/2009	MR
First Church of God	Broken Bow	NE	3,960	6/8/2003	RC

Holcomb Pharmacy	Broken Bow	NE	3,306	8/15/2005	RC
Jack Landramer	Broken Bow	NE	1,404	7/9/2003	RC
Judy's	Broken Bow	NE	2,784	7/30/2008	RC
KC Trucking, Inc.	Broken Bow	NE	3,629	5/10/2011	MR
Loyd Auto Sale	Broken Bow	NE	4,485	6/9/2001	MR
Lynn Berggren	Broken Bow	NE	2,000	3/28/2008	FO
McMeen Phicial Theray	Broken Bow	NE	860	9/30/2010	MRFO
Off Broadway Apt	Broken Bow	NE	1,011	10/1/2010	Ply
Pleasure Lanes	Broken Bow	NE	12,776	10/19/2002	MR/FO
Rod Jenkins	Broken Bow	NE	5,684	6/30/2010	FO
Rodger Ritchie	Broken Bow	NE	7,912	11/10/2010	IF
Rod's Body & Paint	Broken Bow	NE	5,684	10/10/2011	RC
Stanley Martin	Broken Bow	NE	100	6/30/2010	FO
Universal Insurance	Broken Bow	NE	3,415	4/26/2007	MR
Universal Insurance	Broken Bow	NE	26	3/27/2008	Repair
Universal Insurance	Broken Bow	NE	880	6/10/2008	RC
Vance Vohland	Broken Bow	NE	1,500	5/7/2008	MR
Vance Vohland	Broken Bow	NE	3,434	8/1/2008	RC
Westside Bakery	Broken Bow	NE	Vent	6/30/2010	Repair
Ranchland Ford	Broken Bow	NE	14,253	6/13/2012	MR
Pleasure Lanes	Broken Bow	NE	4,915	8/20/2012	RC
Varney Pharmacy	Broken Bow	NE	7,411	9/10/2012	FO
Star Circuits	Brookings	SD	22,720	6/9/2000	MR
Mike Jeffers	Brule	NE	4,822	10/5/2009	IF
Norder Agri-Supply Inc	Bruning	NE	4,607	6/23/2010	MR
Norder Agri-Supply Inc	Bruning	NE	3,500	8/26/2011	MR/FO
Village of Bruning	Bruning	NE	1,100	10/5/2010	FO
Larry Hulse	Bruning	NE	3,229	8/14/2012	MR
Bruno Lounge	Bruno	NE	2,774	7/24/2009	RC
Lawrence Polivka	Bruno	NE	2,912	10/20/2012	FO/IF
Feed Bunk	Burlington	CO	2,916	7/9/2003	FO
Jerry Maugus	Burlington	CO	3,026	6/24/2003	MR
Calamus Wash and Dry	Burwell	NE	2,637	8/31/2011	FO
Dons Auto Parts Inc.	Burwell	NE	7,938	8/14/2009	MR
Kent Helm	Burwell	NE	3,600	5/13/2002	MR
MBD Corp.	Burwell	NE	1,394	2/14/2012	IF
Debbie & Pat Kelley	Burwell	NE	1,546	11/20/2012	IF
Mars Pet Food	Butler	MO	2,240	5/18/2007	FO
Centura Hills Golf Course	Cairo	NE	15,406	6/6/2004	MR
Gilbert Mora	Cairo	NE	622	11/3/2008	MR
Mike Panowicz	Cairo	NE	1,872	6/15/2010	IF
Charley Lloyd	Callaway	NE	4,704	6/25/2009	MR
Robert Schneringer	Callaway	NE	2,906	11/21/2012	FO/IF
James Perrie	Campbell	NE	784	10/29/2011	Ply
County Partners Coop	Cedar Rapids	NE	9,435	4/6/2007	MR
Ed Braun	Cedar Rapids	NE	3,561	9/3/2010	IF
Central Realty	Central City	NE	3,326	10/17/2011	FO
Merrick Manor	Central City	NE	7,088	7/17/2006	RC
Old Pontiac Building	Central City	NE	4,213	6/8/2003	FO
Vollers Chiropractic Clinic	Central City	NE	3,593	6/9/2007	MR
David Ferris	Central City	NE	2,349	6/6/2012	IF
AGI Sales Inc.	Ceresco	NE	1,404	5/23/2005	FO

Agrisales Inc.	Ceresco	NE	918	5/5/2006	MR
Agrisales Inc.	Ceresco	NE	2,529	6/21/2008	RC
Jason Bouc	Ceresco	NE	1,470	4/7/2011	IF
John Miskimins Motor Co	Chadron	NE	19,691	7/28/2008	MR
G & G Farms Inc	Chapman	NE	4,752	5/31/2010	MR
Kiner Inc	Chapman	NE	230	1/7/2011	FO
Raymond Williams	Chapman	NE	1,200	11/7/2001	FO
Lisle Corp.	Clarinda	IA	24,302	6/1/1997	MR
Weathertight Insulation Inc	Clarks	NE	85	1/5/2011	IF
City of Clay Center	Clay Center	NE	6,964	6/30/2009	MR
David Woods	Clay Center	NE	1,953	11/6/2009	MR
Gopher Sign Co	Clear Lake	SD	30,490	9/1/2005	MR
Brendsel Properties Inc	Clearwater	MN	13,278	9/24/2002	MR/FO
Jancast	Coffeyville	KS	37,400	5/19/2006	MR
Dennis Brabec	Colon	NE	2,592	8/25/2011	FO
Alice Tschantre	Columbus	NE	138	6/9/2010	Ply
Dale Buell	Columbus	NE	840	7/23/2009	FO
Greg Luchsinger	Columbus	NE	2,474	4/1/2011	IF
John Crane Orion	Columbus	NE	2,767	7/15/2010	MR
Wunderlichs Catering	Columbus	NE	8,238	6/25/2002	FO
Wayne Zysset	Columbus	NE	2,066	7/28/2012	FO
Mike Cosentino	Comstock	NE	1,677	9/6/2012	IF
Roger Poppe	Cook	NE	4,277	7/31/2012	MR
Darrell Schmidt	Cortland	NE	2,376	8/19/2010	MR
Matt's Auto Repair	Cortland	NE	3,036	10/18/2009	FO
Ron Wells	Cotesfield	NE	2,955	6/3/2011	MR
Ed Bishop	Council Bluffs	IA	3,402	5/26/2012	MR
Pony Creek Farm	Council Bluffs	IA	17,632	9/20/2012	MR
100 Meridian Bowl	Cozad	NE	3,320	7/23/2001	MR
Boekirchers	Cozad	NE	6,174	4/30/2001	RC
Boekirchers	Cozad	NE	9,800	7/1/2001	FO
Cozad Services	Cozad	NE	Repair	1/22/2009	Repair
Margaretha Klopping	Cozad	NE	826	9/11/2007	MR
Rolland Hood & Sons	Cozad	NE	5,103	6/22/2007	MR
Sonny Foods	Cozad	NE	17,941	5/20/2005	MR
Stan Gentzler	Cozad	NE	2,952	3/9/2012	DB
Christ the King Catholic Church	Cozad	NE	7,881	4/24/2012	MR
Morrie Andres	Cozad	NE	1,808	6/5/2012	MR
Cozad Development Center	Cozad	NE	19,229	8/31/2012	MR
Cozad Development Center	Cozad	NE	50	9/4/2012	Repair
Bob Heironymus	Crete	NE	610	10/18/2010	FO
Crete Municipal Airport	Crete	NE	5,491	9/3/2010	MR
Janis Snodgrass	Crete	NE	1,339	10/16/2010	FO
Jim Wissenburg	Crete	NE	3,974	10/31/2008	MR
Mitch & Kylie Kubicek	Crete	NE	119	11/4/2009	IF
PBS Rentals & Construction	Crete	NE	261	10/12/2010	FO
PBS Rentals & Construction	Crete	NE	5,872	6/30/2010	MR
PBS Rentals & Construction	Crete	NE	1,028	8/12/2010	FO
Skala's OK Tire	Crete	NE	3,499	10/22/2010	MR
Brian Lorenz	Crete	NE	12,872	9/5/2012	FO
Curtis Firehall	Curtis	NE	4,783	8/9/2007	FO
Meyer Flying Service	Curtis	NE	8,640	2/15/2008	MR

Stanley Sellers	Curtis	NE	972	6/21/2008	MR
RJ Builders	Curtis	NE	1,872	11/19/2012	IF
Danbury School	Danbury	NE	9,288	5/23/2001	FO
Decatur Coop Assn.	Danbury	NE	576	4/10/2010	DB
Bryan Christensen	Dannebrog	NE	1,283	7/25/2011	FO
Bruce Glock	David City	NE	1,871	7/9/2011	MR
Chris Janak	David City	NE	4,680	6/29/2009	MR
Ron Hotovy	David City	NE	4,514	9/27/2009	MR
Ron Hotovy	David City	NE	270	10/1/2009	FO
Allen Sward	Denton	NE	4,600	5/17/2002	MR
Stratton Supper Food	Denver	CO	3,712	5/1/2003	FO
Glenn Bartling	Deshler	NE	2,391	9/17/2012	FO
Bernard Sykora	Deweese	NE	5,400	7/27/2010	MR
DeWitt Museum	DeWitt	NE	2,072	7/15/2011	FO
Greg Peters	DeWitt	NE	3,576	6/5/2012	MR
Red Zone Bar	DeWitt	NE	2,217	8/30/2012	MR/FO
Joyce Nickel	DeWitt	NE	840	10/5/2012	IF
ADM	Dodge City	KS	12,000	4/27/2005	FO
Cardinal Construction	Doniphan	NE	100	4/11/2011	IF
Cardinal Construction	Doniphan	NE	4,238	4/14/2011	IF
Roger Semler	Dorchester	NE	1,966	9/24/2011	IF
Ben Kouma	Dwight	NE	3,370	5/23/2011	MR
Pat Benes	Dwight	NE	1,674	7/18/2011	FO
Val Makovicka	Dwight	NE	4,384	4/17/2012	IF
Pekarek's Produce	Dwight	NE	953	4/18/2012	IF
R & D Ramsey	Earlham	IA	12,926	4/30/2004	MR
Francis Koesters	Earling	IA	3,390	6/29/2011	MR
Aurora Coop	Edgar	NE	1,781	5/25/2004	FO
Overturf & Associates	Edgar	NE	1,488	5/5/2008	Ply/FO
Ag Valley Coop	Edison	NE	2,893	3/27/2008	FO
Ag Valley Coop	Edison	NE	7,802	6/21/2008	MR
Ag Valley Coop	Edison	NE	402	4/8/2009	FO
Ag Valley Coop	Edison	NE	Repairs	7/14/2010	DB
Ag Valley Coop	Edison	NE	2,800	7/22/2010	DB
Ag Valley Coop	Edison	NE	Repair	7/22/2010	Foam
Ag Valley Coop	Edison	NE	32,400	8/4/2010	MR
Ag Valley Coop	Edison	NE	1,276	9/7/2010	Time & Material
Doug McCann	Edison	NE	654	10/11/2012	IF
Ag Valley Coop	Edson	NE	353	4/8/2010	DB
Elba Public School	Elba	NE	3,523	6/28/2000	RC
Elba Rural Fire Dept	Elba	NE	4,498	4/26/2005	RC
Don Gray	Elk Point	SD	4,235	7/21/2007	RC
Ag Dryer	Elm Creek	NE	8,866	6/29/2009	FO
Ag Dryer	Elm Creek	NE	120	10/27/2009	FO
Arlin Florell	Elm Creek	NE	336	7/7/2009	FO
Don Holmes	Elm Creek	NE	2,722	8/29/2009	MR
Headwaters Corporation	Elm Creek	NE	608	2/17/2012	IF
Jeff & Susan Davis	Elm Creek	NE	196	8/23/2010	IF
Jo & Lorea Meier	Elm Creek	NE	2,021	1/6/2012	IF
Lance Bauer	Elm Creek	NE	4,186	7/30/2011	FO
Lawrence Marshall	Elm Creek	NE	4,044	7/11/2008	MR
Marvion Reichert	Elm Creek	NE	10,409	8/21/2009	MR

Melvin Serr	Elm Creek	NE	940	8/21/2007	RC
Randy Schukar	Elm Creek	NE	1,302	9/3/2009	RC
Rusty Fertilizer	Elm Creek	NE	5,681	4/23/2009	MR
Sapp Brothers	Elm Creek	NE	610	8/2/2010	IF
Shawn Sullwold	Elm creek	NE	8,483	10/26/2010	IF (Quonset)
Shawn Sullwold	Elm creek	NE	408	11/11/2010	IF
T & F Sand & Gravel	Elm Creek	NE	7,160	10/7/2009	MR
Randy Allen	Elm Creek	NE	1,490	8/24/2012	IF
Carlton Clark	Elwood	NE	850	7/22/2010	IF
J & S Star Automotives	Elwood	NE	1,905	7/8/2010	MR
Lofquist Welding Inc	Elwood	NE	420	11/26/2008	IF
Elyria Community Hall	Elyria	NE	1,296	5/13/2002	Ply
United Methodist Church of Endicott	Endicott	NE	2,901	9/21/2012	MR/FO
Alddeline Nelson	Ericson	NE	2,866	8/30/2007	MR
Wayne Frost	Esbon	KS	4,933	11/4/2009	MR
Eustis-Farnam School	Eustis	NE	4,781	10/17/2005	FO
Neil Jack	Eustis	NE	6,227	11/29/2011	FO
Eustis-Farnam School	Eustis	NE	4,781	7/6/2012	RC
Bert Keller	Eustis	NE	988	11/29/2012	IF
John Yeutter	Eustis	NE	8,191	12/18/2012	IF
Roger Johnson	Exeter	NE	11,046	11/19/2010	IF
Elden Luethke	Fairmont	NE	1,641	11/3/2010	IF
John Lowe	Fairmont	NE	3,520	8/19/2010	MR
PJ O'Connor	Fairmont	NE	2,689	5/28/2012	MR
Jerry Johnson	Fairmont	NE	1,565	7/24/2012	MR
Good News Assembly of God Church	Falls City	NE	200	11/4/2011	MR
WASP Inc.	Falls City	NE	1,783	9/1/1997	MR
WASP Inc.	Falls City	NE	58,160	9/9/2008	FO
Rovey Seed	Farmersville	IL	10,282	10/1/2010	MR
Irvin Hess	Farnam	NE	1,853	1/10/2012	IF
Lukasiewicz Furniture	Farwell	NE	3,159	5/1/1995	FO
Duane Wiese	Filley	NE	4,342	11/20/2012	MR
Camp Oasis	Firth	NE	8,939	5/19/2008	MR
City of Franklin	Franklin	NE	6,091	10/3/2010	MR/FO
Ryan Bonham	Franklin	NE	7,000	7/28/2011	FO/IF
Ryan Bonham	Franklin	NE	336	5/9/2012	Repair
Bill Calta	Fremont	NE	378	4/11/2011	IF
Platte Township	Fremont	NE	2,312	6/28/2011	MR
Victors Inc.	Fremont	NE	3,305	9/27/2007	MR
Farmers Union Cooperative	Friend	NE	6,713	8/27/2010	MR
Tuttle Inc	Friend	NE	Vent	7/8/2009	Repair
HRW Farming	Friend	NE	16,580	10/2/2012	MR
Dirk Barnett	Funk	NE	11,091	9/27/2011	MR
Jim Larson	Funk	NE	3,528	5/30/2009	MR
Monty Verbeck	Funk	NE	4,104	8/2/2011	MR
Monty Verbeck	Funk	NE	2,177	8/25/2011	MR
Roger Cain	Funk	NE	4,964	4/14/2010	IF/MR
Roger Cain	Funk	NE	2,925	5/6/2010	IF/MR
Tim Ericson	Funk	NE	170	5/22/2009	IF
H J Inc	Garden City	KS	4,730	11/3/2009	FO
Ipsco	Geneva	NE	50,700	10/28/2006	FO/MR
Ipsco	Geneva	NE	369	6/16/2010	FO

VFW Hall	Geneva	NE	1,089	10/17/2012	MR
Chad Harms	Genoa	NE	174	6/9/2010	IF
Arleen's Cafe	Gibbon	NE	455	6/15/2011	FO
Cargill	Gibbon	NE	3,750	8/16/2010	Metal
Cargill	Gibbon	NE	72,800	8/18/2010	Repair
Cargill	Gibbon	NE	140,400	5/28/2010	MR
Ft Kearney Trading Post	Gibbon	NE	1,741	9/1/2011	MR/FO
George Pierce	Gibbon	NE	1,125	7/26/2007	Maintain
Gibbon Cremation	Gibbon	NE	40	12/8/2010	FO
Gibbon Meat Packing	Gibbon	NE	8,688	8/4/2010	DB
Gibbon Meat Packing	Gibbon	NE	6,998	8/4/2010	DB
Larry Sheirs	Gibbon	NE	2,696	9/12/2008	MR
Michael Lehn	Gibbon	NE	4,124	7/9/2009	MR
Mike & Sue Hutsell	Gibbon	NE	2,580	7/9/2009	MR
Optic Fertilizer	Gibbon	NE	900	8/15/2003	FO
Optic Fertilizer	Gibbon	NE	489	8/10/2009	FO
Optic Fertilizer	Gibbon	NE	930	7/2/2011	FO
Optic Fertilizer	Gibbon	NE	285	7/2/2011	IF
Optic Fertilizer	Gibbon	NE	16,609	8/8/2011	FO
Ready Mix	Gibbon	NE	297	12/22/2010	IF
Shinn Turkeys Feed Div	Gibbon	NE	798	8/21/2000	Ply
Cargill	Gibbon	NE	78,624	5/22/2012	MR
Ready Mix	Gibbon	NE	851	9/13/2012	IF
Jason Humphrey	Giltner	NE	799	1/20/2012	IF
Sun Opta Sunflower	Goodland	KS	4,806	8/28/2009	FO
Baldwin Filters	Gothenburg	NE	54,696	6/4/2006	MR
Baldwin's Filter's	Gothenburg	NE	54,696	6/22/2005	MR
Brand Electric	Gothenburg	NE	322	8/5/2007	MR
Brian Aden	Gothenburg	NE	83	10/4/2010	FO
Brian Aden	Gothenburg	NE	1,269	7/30/2011	MR/FO
Dale Block	Gothenburg	NE	475	6/26/2009	MR
Dennis McCain	Gothenburg	NE	4,428	8/19/2006	MR
Gothenburg Public School	Gothenburg	NE	1,465	6/25/2009	Ply
Gothenburg State Bank	Gothenburg	NE	2,492	3/16/2010	IF
Home Agency	Gothenburg	NE	4,348	7/25/2007	MR
Jim Nelms	Gothenburg	NE	3,640	5/6/2002	FO
Keith Maline	Gothenburg	NE	2,214	7/16/2010	MR
Land O Lakes Purina Feed	Gothenburg	NE	4,238	7/30/2010	IF
Lee & Charlet Carlson	Gothenburg	NE	3,456	7/9/2010	MR
Nebraska Salt & Grain	Gothenburg	NE	17,295	11/6/2010	MR
Nebraska Salt & Grain	Gothenburg	NE	50	2/15/2012	FO
Orscheln Farm & Home	Gothenburg	NE	11,666	10/20/2007	FO
Platte Valley Scientific	Gothenburg	NE	20	3/22/2011	RC
Rita Thomalla	Gothenburg	NE	3,067	6/24/2009	MR
Shane Aden	Gothenburg	NE	1,996	8/31/2012	MR
Christ the King Catholic Church	Gothenburg	NE	9,535	9/1/2012	MR
Gothenburg Public School	Gothenburg	NE	50	9/5/2012	DB
4-H Youth Specialist	Grand Island	NE	5,883	8/9/1999	MR
Bailey Photography	Grand Island	NE	1,480	9/1/1997	HC
Chief	Grand Island	NE	400	10/14/2004	MR
Chief	Grand Island	NE	933	4/11/2006	MR
Christ Lutheran Church	Grand Island	NE	2,454	7/21/2008	DB

Christ Lutheran Church	Grand Island	NE	592	7/21/2008	FO
Dennis Beran	Grand Island	NE	318	6/29/2010	RC
Domino's Pizza	Grand Island	NE	6,450	8/19/2005	FO
GB & G Properties	Grand Island	NE	3,084	7/25/2007	MR
GIA	Grand Island	NE	4,416	5/15/2005	Repair
GIA	Grand Island	NE	63 Vents	8/25/2006	Repair
Grand Island School	Grand Island	NE	7,810	6/17/2003	FO
Grand Island School (Dodge)	Grand Island	NE	15,377	7/22/2004	FO
Grand Island School (Dodge)	Grand Island	NE	5,540	6/15/2005	FO
Huebner/Petersen	Grand Island	NE	100	3/1/1996	Repair
Iglesias Evangelical Redencion Eperna	Grand Island	NE	5,607	8/26/2008	FO
James Allen	Grand Island	NE	1,950	7/8/2010	Rec
Jerry Neidfelt	Grand Island	NE	4,619	5/1/1998	HC
KHGI-TV	Grand Island	NE	1,619	3/5/2012	IF
Mid Nebraska Disposal	Grand Island	NE	3,825	4/28/2008	FO
Mid Plains Center	Grand Island	NE	1,440	4/30/2008	RC
Mid Plains Center	Grand Island	NE	1,829	7/29/2010	Ply
Nebraska Peterbilt	Grand Island	NE	27,900	5/18/2009	MR
NorthWestern Mutual	Grand Island	NE	2,040	6/30/2010	FO/RC
Overhead Door	Grand Island	NE	4,200	9/16/2009	FO Gutter
Ron Laub	Grand Island	NE	1,406	5/31/2011	MR
Standard Iron	Grand Island	NE	Repair	8/22/2009	Skylights
Third City Christen Church	Grand Island	NE	vent	8/1/2001	Repair
Tommy's Restaurant	Grand Island	NE	3,357	6/30/2007	FO
Tommy's Restaurant	Grand Island	NE	10	7/13/2011	MR/FO
Yellow Van	Grand Island	NE	1,130	5/9/2008	FO
Western Edge	Grand Island	NE	11,139	7/20/2012	IF
Tommy's Restaurant	Grand Island	NE	369	10/12/2012	Repair
Kriz-Davis Company	Grand Island	NE	2,436	11/9/2012	IF
Brick Palace	Greeley	NE	2,940	7/30/2004	FO
Don Hahn	Greenwood	NE	3,229	5/22/2011	MR
Marion Eisler	Greenwood	NE	6,804	6/6/2011	MR
Susan Tonniges	Gresham	NE	1,788	9/24/2012	MR
Jim Hoit	Guide Rock	NE	4,640	6/18/2010	MR
NPPD- Sheldon Station	Hallam	NE	11,832	7/10/2010	MR
NPPD - Sheldon Station	Hallam	NE	2,989	10/18/2011	FO/IF
NPPD - Sheldon Station	Hallam	NE	524	11/17/2011	IF
NPPD- Sheldon Station	Hallam	NE	3,802	7/15/2011	MR
NPPD- Sheldon Station	Hallam	NE	727	9/2/2011	DB
Vernon Kaldahl	Hardy	NE	3,946	8/28/2007	MR
Zoltenko Farms Inc	Hardy	NE	5,080	10/8/2010	IF/FO
Hydraulic Component	Hartington	NE	95,290	8/13/2003	MR
Hydraulic Component	Hartington	NE	47,872	8/9/2004	MR
Klienschmit Trucking	Hartington	NE	3,969	8/9/2004	MR
Rob Hultquist	Hartwell	NE	610	2/7/2013	IF
Aaron Hyde	Hastings	NE	1,126	3/12/2012	IF
AGP	Hastings	NE	114	11/4/2009	Repair
AGP	Hastings	NE	7,421	5/4/2010	MR
AGP	Hastings	NE	1,533	5/4/2010	FO
Behavioral Service	Hastings	NE	11,773	6/24/2003	FO
Bernardo's	Hastings	NE	6,770	7/28/2005	RC
Chief	Hastings	NE	206	5/1/2003	MR

Cleaners	Hastings	NE	5,000	7/18/2005	FO
DaVita Hastings Dialysis	Hastings	NE	7,959	8/1/2005	EPDM Coating
Don Brock	Hastings	NE	4,425	4/1/1996	Ply
East Side Diesel Service	Hastings	NE	285	76/10	FO
Equalizer Midwest	Hastings	NE	2,440	7/13/2007	RC
Equalizer Midwest	Hastings	NE	7,250	7/4/2008	RC
Francis Porterfield	Hastings	NE	1,248	10/28/2009	Ply or DB
Heartland Veterinary Supply	Hastings	NE	Repair	5/16/2008	Repair
Heartland Veterinary Supply	Hastings	NE	Repair	5/8/2009	Repair
Heartland Veterinary Supply	Hastings	NE	10	4/20/2011	MR
Heartland Veterinary Supply	Hastings	NE	10	6/2/2011	MR
Heartland Veterinary Supply	Hastings	NE	10	7/13/2011	MR
Jacobi's Capet One	Hastings	NE	6,816	8/5/2005	RC
Jay Ceclre	Hastings	NE	674	11/17/2011	IF
Jay Ceclre	Hastings	NE	152	1/4/2012	IF
Jim Holt	Hastings	NE	15,188	4/19/2004	MR
Kinder Morgan	Hastings	NE	10,800	9/25/2007	MR
LeRoy Someelson	Hastings	NE	5,400	5/17/2008	MR
M & W	Hastings	NE	10,455	7/2/2001	MR
Mark Jensen	Hastings	NE	498	7/11/2011	IF
Melvin Johnson	Hastings	NE	1,339	6/6/2011	MR
Methodist Church	Hastings	NE	1,900	7/31/2008	FO
Metz Baking	Hastings	NE	2,590	10/1/1994	Ply
Municipal Ind Controls Service	Hastings	NE	4,200	6/17/2005	FO
Platte River Radio	Hastings	NE	969	9/10/2011	FO
Premium Protein	Hastings	NE	7,700	6/4/2008	FO
Real Estate Group	Hastings	NE	450	4/30/2008	Repair
Real Estate Group	Hastings	NE	440	5/1/2008	Repair
Roger Bartunek	Hastings	NE	2,790	8/5/2005	RC
Snitker Enterprises	Hastings	NE	860	10/11/2007	FO
Snow Car Clinic	Hastings	NE	8,684	7/19/2005	MR
South Central Behavioral	Hastings	NE	2,418	6/22/2005	RC
South Central Behavioral	Hastings	NE	12,781	6/27/2005	RC
South Central Behavioral	Hastings	NE	3,300	6/30/2005	RC
South Central Behavioral	Hastings	NE	1,800	7/28/2005	RC
South Central Behavioral	Hastings	NE	20,299	8/21/2009	RC
Tehama Shrine	Hastings	NE	8,528	9/28/2011	MR
Trent Meyer	Hastings	NE	826	4/4/2011	IF
Tri Valley Builders	Hastings	NE	448	3/15/2012	IF
Western Vocational Services Inc.	Hastings	NE	4,792	9/17/2010	FO
Wilson Case Inc	Hastings	NE	182	7/31/2009	FO
Wilson Case Inc	Hastings	NE	12,000	9/15/2009	RC
Wilson Case Inc	Hastings	NE	47	3/23/2010	Repair
Wilson Case Inc	Hastings	NE	12,960	9/9/2011	FO
Wilson Case Inc	Hastings	NE	50	4/2/2012	Repair
Hastings HVac	Hastings	NE	16	4/16/2012	MR
Southern Hills Golf Course	Hastings	NE	281	5/23/2012	Repair
Ms. Harry/Maxine Borley	Hastings	NE	192	5/24/2012	MR
Equalizer Midwest	Hastings	NE	9,690	7/26/2012	RC
Wilson Case Inc	Hastings	NE	100	9/13/2012	Repair
AGP	Hastings	NE	328	11/5/2012	FO
Bramble's Auto Sales	Hastings	NE	3,224	11/16/2012	FX

KPK	Hay Center	NE	2,713	10/7/2009	FO Tank
Edward Defort	Hays	KS	2,925	10/12/2004	RC
Alden Talbert	Heartwell	NE	3,100	9/12/2009	FO
Alden Talbert	Heartwell	NE	2,519	9/12/2009	RC
Robert Elmore	Heartwell	NE	4,147	6/23/2008	MR
Boardman Aerial	Henderson	NE	9,801	10/30/2008	MR
Hamilton County Ag Society	Henderson	NE	patch	7/3/2007	MR
John Huebert	Henderson	NE	4,493	7/8/2011	MR
Rick Vought	Henderson	NE	3,810	6/27/2008	MR
Clayton Friesen	Henderson	NE	3,221	6/2/2012	MR/FO
Dale Epp	Henderson	NE	6,221	11/9/2012	MR
Arvid Bell	Hendley	NE	298	6/22/2010	MR
Frank Kelly	Hickman	NE	2,022	9/8/2010	MR
Chad lindau	Hildreth	NE	2,218	10/27/2008	FO/MR
Gary Thompson Agency	Hildreth	NE	1,012	9/12/2008	FO
Jelken Farms	Hildreth	NE	3,240	9/22/2011	MR
Marvin Harms	Hildreth	NE	375	11/30/2011	FO
Marvin Hinrichs	Hildreth	NE	2,411	8/4/2010	MR
Maynard L Schriener	Hildreth	NE	2,074	9/21/2010	MR
Ray Owens	Hildreth	NE	1,205	5/5/2011	MR
Terry Hinrichs	Hildreth	NE	3,880	8/21/2010	MR/FO
State Bank of Hildreth	Hildreth	NE	6,559	11/21/2012	FO/IF
Carrie Shultz	Holbrook	NE	1,877	4/17/2009	IF
Allmand Brothers	Holdrege	NE	49,777	7/15/2011	MR
Blum Automotive	Holdrege	NE	3,348	4/30/2007	MR
Cargill Ag Horizons	Holdrege	NE	52,531	8/18/2007	MR
Cargill Ag Horizons	Holdrege	NE	2,490	2/14/2008	New Metal
Cargill Ag Horizons	Holdrege	NE	10	7/5/2011	MR
Cargill AgHorizons	Holdrege	NE	4,791	8/11/2003	MR
Cargill AgHorizons	Holdrege	NE	176	8/11/2003	FO
Cargill AgHorizons	Holdrege	NE	11,925	12/1/2008	Metal
Cargill AgHorizons	Holdrege	NE	760	8/19/2010	RC
Central Valley Irrigation	Holdrege	NE	12,220	7/6/2009	FO
Dr Smith	Holdrege	NE	Skylight	11/10/2008	Repair
Ed Electrical and Plumbing	Holdrege	NE	6,642	4/30/2007	MR
Erlandson Square Condo Ass.	Holdrege	NE	7,855	6/30/2010	DB
Holdrege Vet Clinic	Holdrege	NE	4,571	5/30/2009	FO
IES Commercial Inc	Holdrege	NE	50	7/13/2010	Repair
IES Commercial Inc	Holdrege	NE	10	7/7/2011	Ply
Jim Ostgren	Holdrege	NE	1,306	4/30/2007	MR
K & D Motor & Electric INC	Holdrege	NE	Ridge Cap	5/25/2001	Repair
K & D Motor & Electric Inc.	Holdrege	NE	4,131	3/30/2012	MR
Kayton Electric, Inc.	Holdrege	NE	8,532	9/2/1999	MR
Kinder Morgan	Holdrege	NE	5,302	12/9/2006	RC
Kinder Morgan	Holdrege	NE	3,021	6/6/2007	RC
Kinder Morgan	Holdrege	NE	12,972	10/8/2009	FO/IF/MR
North Park Assembly of God	Holdrege	NE	13,559	10/22/2011	MR
Orscheln Farm & Home	Holdrege	NE	12,600	2/19/2002	HC
Phelps County Title Company	Holdrege	NE	10	1/26/2011	Repair
Phelps County Title Company	Holdrege	NE	10	1/26/2011	Repair
Phelps County Title Company	Holdrege	NE	10	4/22/2011	DB
Platte Valley Communication	Holdrege	NE	2,877	8/12/2006	MR

Progressive Nutrition	Holdrege	NE	945	10/26/2007	FO
Progressive Nutrition	Holdrege	NE	4,536	8/26/2008	MR
Rick's Auto Body	Holdrege	NE	14,679	5/25/2001	FO
Roger L. Johnson	Holdrege	NE	1,682	9/10/2009	MR
Sargent Irrigation Co.	Holdrege	NE	3,311	7/7/2009	FO
Sign Center, Inc	Holdrege	NE	5,424	7/28/2011	IF
Southern Power District	Holdrege	NE	5,856	8/18/1999	MR
Tri-City Auto Parts	Holdrege	NE	1,212	8/8/2011	FO
Woods & Durham	Holdrege	NE	2,650	8/1/2007	FO
Orscheln Farm & Home	Holdrege	NE	10	4/9/2012	HC
Lloyd Waller Feed Lot	Holdrege	NE	8,719	4/24/2012	MR
Jerry Smith	Holdrege	NE	572	6/7/2012	FX
Holdrege Electric	Holdrege	NE	10	7/3/2012	Repair
BD	Holdrege	NE	32	7/3/2012	Repair
Cargill Ag Horizons	Holdrege	NE	144	9/7/2012	DB
Jachin Lodge	Holdrege	NE	1,887	10/26/2012	RC
Brock Sandy	Holdrege	NE	8,582	2/6/2013	IF
Loran Hilbers	Hooper	NE	6,624	2/11/2011	IF
Milligan Farms	Hooper	NE	18,793	7/17/2012	MR
Tim Spires	Hordville	NE	2,163	9/5/2011	FO/IF
Tim Spires	Hordville	NE	2,020	11/19/2012	IF
Sam's Cycle Shop	Huntley	NE	2,100	7/21/2008	MR
FSA office	Imperial	NE	3,640	6/31/2010	RCt
Merlynn Prior	Imperial	NE	1,209	6/31/2010	MR
Garth Wentworth	Inavale	NE	3,576	10/12/2011	IF
Dean Liess	Indianola	NE	608	8/17/2012	MR
Rovey Seed	Inland	NE	1,004	6/22/2011	FO
Krull Agency	Johnson Lake	NE	1,672	3/16/2012	Ply
Randy Uhrmacher	Juniata	NE	5,328	12/10/2012	IF
Charlie Wagner	Juniata	NE	1,792	2/18/2008	Ply
Juniata Fire Dept	Juniata	NE	4,428	6/18/2008	MR
Juniata Shop Building	Juniata	NE	2,657	6/19/2008	MR
Scott Mousel	Juniata	NE	816	5/15/2012	IF
Cerial Food Processors	Kansas City	KS	120	12/9/2010	FO
Al Schadt	Kearney	NE	2,452	7/2/2003	RC
Alan Zastrow	Kearney	NE	213	11/6/2007	FO
Alley Rose	Kearney	NE	6,840	7/1/2002	RC
Ayers Dist.	Kearney	NE	4,400	4/1/1997	MR
B4	Kearney	NE	9,636	8/13/2003	MR
Big Apple Fun Center	Kearney	NE	45,378	11/22/2002	MR
Big Apple Fun Center	Kearney	NE	50	11/9/2011	Repair
Bret King	Kearney	NE	2,132	3/24/2011	IF
Buffalo Air	Kearney	NE	10,800	9/30/2009	MR/Walls
Cellar	Kearney	NE	6,561	7/21/2007	MR
Christensen Feed Lot	Kearney	NE	50	3/14/2011	IF
Complete Music	Kearney	NE	2,988	9/28/2003	FO
Crossroad Ford	Kearney	NE	14,838	7/2/2003	MR
Culligan	Kearney	NE	4,999	5/30/2006	MR
Cummins Great Plains	Kearney	NE	Repair	5/16/2005	Repair
Dave Lucht	Kearney	NE	320	1/6/2012	IF
Dave Lucht	Kearney	NE	800	5/5/007	IF
Dennis Bruchell	Kearney	NE	496	10/23/2007	FO

East Lawn Trailer Court	Kearney	NE	966	5/5/2008	MR
Eric Weisdorfer	Kearney	NE	320	5/20/2011	MR
ESU 10	Kearney	NE	1,260	6/8/2003	Repair
ESU 10	Kearney	NE	350	6/7/2007	Repair
Exhaust Pros	Kearney	NE	4,517	9/18/2008	MR
Eye Care Center	Kearney	NE	3,575	6/21/2008	RC
Fairbanks Case	Kearney	NE	34,365	9/28/2003	MR
Fairbanks International	Kearney	NE	50	11/9/2011	MR
First Church of Nazarene	Kearney	NE	5,047	9/10/2009	MR
First United Methodist Church	Kearney	NE	14,385	10/14/2011	HC
G & G Co	Kearney	NE	3,445	10/18/2005	MR
Garnet Tire	Kearney	NE	13,658	5/12/2009	MR
Gass Trust	Kearney	NE	4,614	8/27/2007	MR
Grace Fellowship	Kearney	NE	10	4/19/2011	MR
Grace Fellowship Church	Kearney	NE	16,330	9/2/2002	RC
Headwaters Corp	Kearney	NE	804	9/9/2010	Alumify
Heartland Cleaning Services	Kearney	NE	1,800	9/21/2007	FO
Huss Platte Valley	Kearney	NE	7,755	5/26/2003	Ply
J & D Investments	Kearney	NE	1,512	10/28/2008	Ply/FO
Jack Wilkins	Kearney	NE	432	12/14/2006	FO
Jeff Kohler	Kearney	NE	2,000	4/28/2003	FO
Jeremy Ringlein	Kearney	NE	700	12/3/2007	FO
Jim Grove	Kearney	NE	221	5/28/2010	Ply
Jim Thompson	Kearney	NE	1,295	11/24/2011	IF
John Shundoff	Kearney	NE	300	3/16/2010	IF
John Turek (Rick Yendra)	Kearney	NE	2,231		IF
Kearney Tire & Auto	Kearney	NE	7,700	7/14/2011	FO
Kevin Kamrath	Kearney	NE	530	12/7/2011	IF
Kinder Morgan	Kearney	NE	24,990	10/17/2002	MR
Lela Epley	Kearney	NE	25	9/7/2007	Repair
Leo Schueth	Kearney	NE	1,788	12/18/2008	IF
Liberty Cleaners	Kearney	NE	1,918	12/14/2006	MR
Mid NE Community Action	Kearney	NE	10,224	5/14/2001	Repair
Midlands Cardiology Group	Kearney	NE	Repair	10/2/2009	Repair
Midlands Cardiology Group	Kearney	NE	Repair	9/20/2010	Repair
Midtown Western Inn	Kearney	NE	750	4/20/2007	Repair
MiJoyToy Transportation	Kearney	NE	450	12/16/2011	IF
Mike Riley	Kearney	NE	168	1/7/2007	Patch
Mitch Bottom	Kearney	NE	114	4/1/2011	IF
MTG Incorporated	Kearney	NE	2,942	7/20/2007	Ply
North Amigo's	Kearney	NE	1,000	5/15/2003	RC
Orscheln	Kearney	NE	15,757	9/8/2002	HC
Orscheln Farm & Home	Kearney	NE	2,679	7/18/2007	MR
Percition Import	Kearney	NE	4,428	7/3/2008	MR
Pizza Hut Delivery	Kearney	NE	2,000	4/24/2009	DB
Platte Valley Communication	Kearney	NE	4,613	9/10/2002	MR
Platte Valley Communication	Kearney	NE	2,281	10/24/2007	MR
PV	Kearney	NE	408	7/30/2004	FO
PV	Kearney	NE	5,760	3/18/2006	MR
Raymond Shrader	Kearney	NE	2,192	10/20/2010	Ply
Richard Lebsack	Kearney	NE	197	7/18/2008	MR
Richards investments	Kearney	NE	2,255	9/18/2007	FO

Rita Morzolf	Kearney	NE	2,300	8/1/2002	Ply
Second Chance Body	Kearney	NE	3,555	6/17/2009	MR/FO
Sharron Altmaier	Kearney	NE	3,240	7/3/2008	MR
Shawn King Inv./ Kearney Rental Pros	Kearney	NE	480	11/9/2011	Ply
Sorensen Construction	Kearney	NE	7,248	1/5/2011	IF
Sorensen Construction	Kearney	NE	11,120	9//8/2008	IF
Summer Haven Lake	Kearney	NE	500	10/3/2002	Ply
U-Built	Kearney	NE	5,242	9/11/2008	IF
Voilet Gillespie	Kearney	NE	1,170	10/23/2003	Ply
Weathertight Insulation Inc	Kearney	NE	100	12/20/2010	IF
Weathertight Insulation Inc	Kearney	NE	530	12/20/2010	IF
Yellow Freight	Kearney	NE	11,166	8/16/2002	MR
Chief Construction	Kearney	NE	28	5/5/2012	Repair
ESU 10	Kearney	NE	50	5/7/2012	Repair
MTG Incorporated	Kearney	NE	224	5/24/2012	Repair
Orscheln	Kearney	NE	50	5/26/2012	Repair
Liberty Cleaners	Kearney	NE	48	5/30/2012	FO
Foote Convenience Plaza	Kearney	NE	4,869	6/13/2012	MR
Chief Construction	Kearney	NE	1,452	6/15/2012	IF
Precision Import	Kearney	NE	16	11/21/2012	Repair
First Church of Nazarene	Kearney	NE	112	2/13/2013	IF
AgVenture	Koller	NE	21,622	9/30/2006	MR
AgVenture	Koller	NE	235	6/23/2008	IF
Larry Schmieding	LaVista	NE	100	7/11/2011	MR
Mick Lemke	Lawrance	NE	2,223	8/22/2008	MR
Mick Lemke	Lawrance	NE	1,901	8/22/2008	Alumify
Mick Lemke	Lawrance	NE	56	11/4/2009	FO (Bin)
Detroit Tool Metal Products	Lebanon	MO	23,799	4/30/1999	MR
Ronald & Theresa Boxum	Lebanon	KS	3,060	12/4/2012	IF
Decatur Coop Assn.	Lenora	KS	3,564	11/28/2011	DB
Central Valley Irrigation	Lexington	NE	2,023	9/26/2011	FO
Crawford Cattle Co.	Lexington	NE	4,218	10/25/2011	MR
Fairbanks International	Lexington	NE	22,235	10/25/2011	RC
GB & G Properties	Lexington	NE	6 AC	6/24/2008	Repair
GB & G Properties	Lexington	NE	11,425	6/15/2011	MR
Human Health Building	Lexington	NE	4,811	8/26/2005	FO
Justa Truck Trucking	Lexington	NE	6,998	9/28/2011	MR
LaBamba	Lexington	NE	5,104	5/21/2001	FO
LaBamba	Lexington	NE	5,781	10/13/2011	RC
Landmark Implement	Lexington	NE	26,730	9/7/2011	MR
Little Caesars Pizza	Lexington	NE	4,218	6/8/2007	MR
Mac's Short Stop	Lexington	NE	4,039	7/30/2011	MR
Mac's Short Stop	Lexington	NE	337	8/1/2011	FO
MTG Incorporated	Lexington	NE	Repair	5/8/2009	Ply
Nebraska Ag & Irrigation	Lexington	NE	6,481	1/26/2012	IF
Rent All Rentals of Lex	Lexington	NE	15,815	5/1/2001	MR
Veetronix	Lexington	NE	7,569	4/25/2005	MR
Wobbema Trucking	Lexington	NE	2,851	8/1/2011	MR
MTG Incorporated	Lexington	NE	50	5/11/2012	Repair
Lexington Public School	Lexington	NE	17,880	6/8/2012	MR/FO
MTG Incorporated	Lexintgon	NE	20	8/1/2011	DB
Warren Herr	Lincoln	NE	1,853	5/17/2011	RC

Burden Sales Co.	Lincoln	NE	3,659	7/21/2011	MR
C&T Kucera (N.Platte)	Lincoln	NE	8,200	4/26/2005	MR
Cabala's / Wells Fargo	Lincoln	NE	10,656	10/16/2000	MR
Clyde Steiner	Lincoln	NE	2,240	10/20/2010	FO
Congregation Tifereth Israel	Lincoln	NE	2,066	8/30/2010	FO
Cotner Center Condominiums	Lincoln	NE	311	9/25/2009	MR
Cotner Center Condominiums	Lincoln	NE	1,455	10/18/2009	FO
D & K Automotive	Lincoln	NE	2,205	10/21/2010	FO
D & K Automotive	Lincoln	NE	2,331	6/18/2009	MR
Del Lembrich	Lincoln	NE	4,605	7/25/2011	RC
Denny Harkins	Lincoln	NE	2,712	8/30/2010	MR
Dickey & Burham, Inc.	Lincoln	NE	224	5/17/2011	FO
Duane Hartman Investments	Lincoln	NE	15,015	6/5/2005	FO
Duane Hartman Investments	Lincoln	NE	5,445	9/24/2008	RC
Duane Hartman Investments	Lincoln	NE	50	7/9/2011	MR
Ed Nachsheim	Lincoln	NE	255	8/13/2010	DB
F & F Oil	Lincoln	NE	2,418	4/29/2004	FO
Georgia Payne	Lincoln	NE	333	9/26/2011	MR
Gerald Magee	Lincoln	NE	1,878	6/8/2011	MR
Havelock Welding Shop	Lincoln	NE	3,698	6/23/2010	FO
Illar Sirk	Lincoln	NE	420	11/16/2010	FO
Illar Sirk	Lincoln	NE	171	5/6/2011	DB
J.J. Westhoff Construction	Lincoln	NE	8,811	7/22/2005	MR
Jack Peterson	Lincoln	NE	496	9/23/2009	MR
John Garrison	Lincoln	NE	235	9/7/2011	MR
John Mercier	Lincoln	NE	190	5/16/2011	DB
Kris Rosenow	Lincoln	NE	3,601	10/9/2009	FO
Larry Hadfield	Lincoln	NE	640	8/12/2010	FO
Lincoln Electric	Lincoln	NE	260	9/16/2002	MR
Lincoln Electric	Lincoln	NE	17,780	9/11/2010	MR
Lincoln Electrical Supply	Lincoln	NE	16,470	7/1/2001	MR
Lincoln Management Co.	Lincoln	NE	5,250	4/22/2004	MR
Lincoln Memorial Funeral Home	Lincoln	NE	10,787	6/27/2007	RC
Lincoln Plating Company	Lincoln	NE	1,200	7/11/2000	Repair
Lincoln Snacks	Lincoln	NE	Ridge Cap	11/30/2009	Repair
Metzger's Auto	Lincoln	NE	4,993	6/7/2011	MR
NC+ Hybrids	Lincoln	NE	19,397	10/20/2001	MR/FO
Nebraska Boiler Co.	Lincoln	NE	11,622	4/1/1997	MR
Nebraska Boiler Co.	Lincoln	NE	1,440	10/2/2001	FO
Oasis Salon	Lincoln	NE	1,120	6/27/2007	MR
Ralph Giebelhaus	Lincoln	NE	420	10/22/2010	Ply
Rick Horsley	Lincoln	NE	1,260	12/10/2010	IF
Sandhills Publishing	Lincoln	NE	62,941	7/15/1999	MR
Shirley Schafer	Lincoln	NE	1,159	7/27/2011	FO
Snyder Industries	Lincoln	NE	6,545	5/25/2000	FO
Speedway Properties	Lincoln	NE	15,648	10/10/2011	MR
Terry Stolle	Lincoln	NE	420	11/5/2010	FO
University of Ne. (N. Platte)	Lincoln	NE	3,174	10/14/2004	FO
Valhallan Papers	Lincoln	NE	10,206	6/3/2010	MR
Wayne Schroeder	Lincoln	NE	2,162	4/1/2010	IF
Window Technologies	Lincoln	NE	31,435	7/15/2005	FO
Duane Hartman Investments	Lincoln	NE	1,488	5/9/2012	MR

Willard Sorority - Wesleyan University	Lincoln	NE	3,690	5/22/2012	FX
Yankee Hill Brick & Tile	Lincoln	NE	1,979	6/4/2012	MR
Madsen's Bowling & Billiards	Lincoln	NE	18,447	6/7/2012	MR/FO
Joe French	Lincoln	NE	3,362	7/17/2012	MR
Mike Johnson	Lincoln	NE	1,270	7/23/2012	RC
Paul Hunt Townhomes	Lincoln	NE	231	8/16/2012	IF
Wadlow-Rozanek Funeral Home	Lincoln	NE	1,025	8/23/2012	FO
John Sipp	Lincoln	NE	1,121	10/8/2012	MR
Paul Hunt Townhomes	Lincoln	NE	180	10/9/2012	IF
Uribe Refuse	Lincoln	NE	1,200	10/11/2012	FO
Rockenbach Remodeling	Lincoln	NE	1,546	10/15/2012	IF
Havelock Social Hall	Lincoln	NE	12,527	10/19/2012	MR
KOLN/KGIN TV	Lincoln	NE	15,319	11/2/2012	FX
Yankee Hill Brick & Tile	Lincoln	NE	1,778	11/2/2012	RC
Baja Salon	Lincoln	NE	130	11/20/2012	Repair
Norlyn Raisch	Lincoln	NE	300	11/26/2012	IF
Husker Auto Group	Lincoln	NE	83	12/6/2012	Repair
Dick Madsen	Litchfield	NE	194	11/14/2011	FO
James Reynolds	Litchfield	NE	1,318	11/15/2011	IF
Max's Market	Litchfield	NE	2,687	8/29/2005	RC
Mike Gillming	Litchfield	NE	1,800	10/20/2011	IF
Snow Construction	Litchfield	NE	1,487	4/29/2011	RC
Snow Construction	Litchfield	NE	3,276	4/29/2011	MR
Super Foods, Inc.	Logan	IA	13,076	8/6/2012	FO
Doug Schemper	Long Island	KS	1,738	10/10/2011	IF
North Central Kansas Contractors	Long Island	KS	3,620	3/23/2010	IF
North Central Kansas Contractors	Long Island	KS	6,532	3/29/2010	IF
Long Pine Feed & Grain	Long Pine	NE	5,672	7/12/2007	FO
Cook & Beals, Inc.	Loup City	NE	2,586	10/1/1995	MR
Kirby Johnson	Loup City	NE	3,110	1/18/2012	IF
Jeff Tepoel	Malmo	NE	552	11/13/2012	IF
Grain Place Foods, Inc.	Marquette	NE	12,375	7/12/2012	MR/FO
Cottonwood Apartments	Martell	NE	1,128	6/23/2009	MR
Southwest Fire Dept Station #2	Martell	NE	4,067	5/31/2010	MR
Aaron Nelson	Martell	NE	594	10/18/2012	IF
Loch Sand & Construction	Maryville	MO	19,376	5/21/2008	MR
Brent Boekickers	Maxwell	NE	1,280	6/7/2007	FO
McCook Public Library	McCook	NE	7,042	7/28/2006	FO
Red Willow Co Fair Board	McCook	NE	9,516	9/29/2009	FO
Southwest Area Training Service	McCook	NE	8,000	7/31/2007	FO
Van Diest Supply	McCook	NE	30,400	10/6/2007	FO
Van Diest Supply	McCook	NE	4,200	6/26/2008	FO
NPPD - Sheldon Station	McCook	NE	335	11/24/2011	FO
Van Diest Supply Co.	McCook	NE	8,681	7/8/2011	FO
Van Diest Supply Co.	McCook	NE	34,600	10/22/2011	RC
Wilcox Insurance & Financial Service	McCook	NE	7,916	8/26/2011	FO
Crawford Supply Company	McCook	NE	5,005	7/21/2012	MR
EAD Constructors	McCook	NE	8,340	11/28/2012	IF
Stanley Kucera	Mead	NE	2,190	8/4/2010	MR
Ron Zurcher	Meadow Grove	NE	3,783	8/6/2010	MR
Church of Christ	Merna	NE	5,060	8/13/2010	MR
Dewight Lyon	Merna	NE	2,997	9/4/2007	MR

Dewight Lyon	Merna	NE	4,734	6/10/2008	Maintain
James Foster	Merna	NE	1,774	6/3/2008	MR
Lyon Ranch	Merna	NE	8,573	6/10/2008	MR
Lyon Ranch	Merna	NE	6,670	6/10/2008	Maintain
Mike Ritchie	Merna	NE	1,344	11/10/2010	IF
Steve Hostick	Merna	NE	1,600	8/18/2009	FO
Summitcrest Farms	Milburn	NE	8,120	11/14/2011	IF
Dave Dovel	Milford	NE	893	1/21/2011	IF
Don Strinz Inc.	Milford	NE	3,500	8/1/2003	IF
Don Strinz Inc.	Milford	NE	1,060	8/1/2003	RC
Earnest Well Drilling	Milford	NE	6,696	9/17/2012	FO
Aspen Dairy	Miller	NE	6,444	4/9/2006	MR
LeRoy Lambert	Miller	NE	1,064	6/3/2011	MR
Pribyl Brothers Farms	Milligan	NE	1,183	1/5/2012	IF
Alan Von Seggern	Minden	NE	3,893	10/20/2010	MR
B & G Inc.	Minden	NE	2,703	4/5/2010	DB
Burgess Well Co Inc.	Minden	NE	3,650	6/23/2007	MR
Burgess Well Co Inc.	Minden	NE	3,132	11/12/2007	MR
Cargill	Minden	NE	15,317	9/20/2003	FO
Cargill	Minden	NE	11,475	8/14/2006	FO
Chief Construction	Minden	NE	338	1/3/2012	IF
Chief Construction	Minden	NE	188	1/3/2012	IF
Dan Villars	Minden	NE	180	12/21/2011	IF
David Jameson	Minden	NE	1,763	9/7/2005	MR
David Jameson	Minden	NE	5,511	6/21/2008	MR
Gary Smidt	Minden	NE	122	5/28/2010	Ply
Gary Smidt	Minden	NE	4,514	3/14/2012	IF
John Albers	Minden	NE	3,499	7/31/2009	MR
KAAPA Ethanol	Minden	NE	1,084	4/27/2011	FO
Kinder Morgan	Minden	NE	3,825	7/31/2002	RC
Krull Agency	Minden	NE	4,272	7/3/2002	FO
Larson Farms Inc	Minden	NE	600	5/27/2001	MR
Leon Stadler	Minden	NE	2,257	7/30/2008	MR
Marshall Paulsen	Minden	NE	171	2/15/2008	FO
McBride Realty	Minden	NE	1,128	7/31/2002	RC
Mike Thom	Minden	NE	700	4/1/2011	IF
Minden City Hall	Minden	NE	8,174	11/7/2006	RC
Minden City Hall	Minden	NE	13,994	6/19/2008	RC
Minden Coffee House	Minden	NE	2,184	5/9/2011	FO
Minden Courthouse	Minden	NE	1,701	7/30/1999	FO
Minden Light Dept	Minden	NE	5,763	8/16/2002	MR
Minden Street Dept	Minden	NE	5,967	8/18/2002	RC
Minden Vet Clinic	Minden	NE	Ridge Cap	7/26/2007	FO
R J Nickel Farm	Minden	NE	5,472	6/9/2001	MR
Robert Nickel	Minden	NE	5,472	7/7/2008	RC
Roy Nelson	Minden	NE	768	5/22/2010	Ply
Roy Nelson	Minden	NE	480	11/4/2010	Ply
Scott Olsen	Minden	NE	1,524	6/7/2011	IF
Seed Service of Nebraska	Minden	NE	2,108	6/30/2008	FO
Seed Service of Nebraska	Minden	NE	62	11/9/2011	MR
Stephanie Baxter	Minden	NE	538	1/7/2011	IF
Tim Sorenson	Minden	NE	120	9/21/2007	FO

Tim Sullivan	Minden	NE	300	10/23/2003	Ply
Vinegar Hills Antiques	Minden	NE	4,461	6/14/2006	MR
Vinegar Hills Antiques	Minden	NE	2,359	7/13/2006	MR
Mike Thom	Minden	NE	177	8/28/2012	FO
John Albers	Minden	NE	4	12/3/2012	Repair
Minden Public School	Minden	NE	7,232	5/18/2009	MR
Minden Public School	Minden	NE	Repair	9/19/2009	Repair
Dakota Manufacturing	Mitchel	SD	308	9/17/2010	FO
Dakota Manufacturing	Mitchell	SD	5,295	6/21/2001	MR
Dakota Manufacturing	Mitchell	SD	50,992	7/13/2003	MR
Dakota Manufacturing	Mitchell	SD	31,735	5/17/2005	MR
Dakota Manufacturing	Mitchell	SD	62,903	10/16/2012	RC
Bonnie Peach	Monroe	NE	3,067	6/22/2010	MR
Central Valley Ag Coop	Monroe	NE	Repair	None	Repair
Weber & Sons Button Co	Muscatine	IA	22,632	7/1/1998	MR
Weber & Sons Button Co	Muscatine	IA	9,391	8/14/2007	FO
Lynn Haussermann	Naponee	NE	717	9/17/2010	FO
Matt Harrison	Naponee	NE	225	11/10/2009	FO (Bin)
Paul Pohlenz	Naponee	NE	4,550	6/25/2008	Alumify
Sindt Farms, Inc.	Naponee	NE	5,247	6/25/2008	MR
Midwest Farmers Co-Op	Nehawka	NE	2,174	8/8/2012	MR
Blackburn Manufacturing	Neligh	NE	9,691	6/18/2001	MR
Blackburn Manufacturing	Neligh	NE	13,791	5/19/2005	MR
Blackburn Manufacturing	Neligh	NE	5,629	9/12/2005	MR
Blackburn Manufacturing	Neligh	NE	2,520	11/7/2006	MR
Blackburn Manufacturing	Neligh	NE	12,308	5/16/2007	MR
Flenniken	Neligh	NE	3,655	9/20/2010	MR
Nuckolls Co	Nelson	NE	1,715	11/5/2007	FO
Nuckolls County Jail	Nelson	NE	1,640	8/2/2010	FO
4-H	Nelson	NE	4,491	7/21/2012	MR
Dennis Fowlkes	Newman Grove	NE	518	10/7/2009	MR
Progressive Nutrition	Norfolk	NE	706	7/9/2008	DB
Don Peetz	North Loup	NE	2,925	5/28/2010	MR
Mormas Corp	North Loup	NE	5,660	6/28/2000	MR
Bud Budnick	North Platte	NE	1,430	8/11/2009	FO
Calvery Assemble of God	North Platte	NE	9,380	8/8/2009	FO
Hulcher Services	North Platte	NE	8,410	6/29/2011	MR/FO
New Tek Mfg. Inc.	North Platte	NE	11,975	6/27/2011	RC
Orscheln Farm & Home	North Platte	NE	10	6/16/2011	MR
Simon Contractors	North Platte	NE	1,000	8/18/2010	FO
Tena Craghead	North Platte	NE	2,528	9/4/2012	MR
New Tek Mfg. Inc.	North Platte	NE	12,870	10/14/2012	MR
Felt Mill Warehouse	Norton	KS	1,349	5/4/2010	MR
Natoma Corp	Norton	KS	8,226	6/1/2001	MR
New Age Ind. Corp Inc.	Norton	KS	15,580	5/3/2005	MR
New Age Ind. Corp Inc.	Norton	KS	76,302	7/1/2012	MR
Ag Valley Coop	Norton	KS	746	8/2/2012	FO
Ag Valley Coop	Norton	KS	14,293	10/27/2007	MR
Decatur Coop Assn.	Oberlin	KS	17,898	8/19/2007	MR
Decatur Coop Assn.	Oberlin	KS	7,572	6/17/2008	DB
Decatur Coop Assn.	Oberlin	KS	5,412	1/27/2009	IF
Oconto Bar	Oconto	NE	1,755	10/20/2010	FO

21th Century	Ogallala	NE	576	4/8/2008	FO
Grapes Family Farm, LTD	Ogallala	NE	3,119	7/31/2011	MR
NPPD	Ogallala	NE	14,758	9/29/2003	RC
Computer Concepts	Omaha	NE	20,725	7/21/2009	MR
Dustin Kowalewski	Omaha	NE	730	4/2/2010	IF
Gary Quast	Omaha	NE	5,754	7/16/2010	MR
Jack Meysenberg	Omaha	NE	362	9/24/2009	MR
Jim Holt	Omaha	NE	14,800	7/23/2009	FO
Jim Holt	Omaha	NE	500	6/6/2011	FO
Midwest Lab	Omaha	NE	12,804	5/15/2008	MR
Valley Hope	O'Neil	NE	33,748	9/29/2007	MR
O'Neil Auto Supply	O'Neil	NE	12,960	6/6/2012	MR
O'Neil Public School	O'Neil	NE	8,813	7/27/2012	MR
IMAC	Orchard	NE	1,188	9/25/2012	MR
Donnie Nevrkia	Ord	NE	1,996	9/4/2007	MR
Eldon Psota	Ord	NE	5,048	10/20/2009	MR
Family Furniture & Lighting	Ord	NE	12,345	11/5/2001	MR
Ord Amimal Clinic	Ord	NE	3,580	8/4/2009	FO
Richard Bonne	Ord	NE	3,168	6/17/2010	MR
Don Vancura	Ord	NE	7,617	7/4/2012	MR
Gary's Plumbing	Osceola	NE	4,966	9/13/2011	FO
Osceola Vet. Hospital	Osceola	NE	6,437	6/11/2011	MR
City of Osceola	Osceola	NE	84	9/17/2012	FO
ITW Paslode	Oskaloosa	IA	64,800	9/12/2001	MR
Paslode	Oskaloosa	IA	2,501	9/23/2005	FO
Paslode	Oskaloosa	IA	1,590	9/23/2005	FO
Metcalf Auto Plaza	Overland Park	KS	6,312	6/5/2007	Ply
Brent Crandall	Overton	NE	115	7/2/2009	IF
Kerry Blythe	Overton	NE	1,435	Overton	IF
Wayne Hubbard	Overton	NE	3,033	6/30/2009	MR
Lynn Berggren	Overton	NE	540	10/3/2012	FO
Claire Dyas	Oxford	NE	594	8/21/2008	MR
Harvey Bruntz Estate	Oxford	NE	2,635	6/16/2010	MR
Merrick's of Nebraska	Oxford	NE	1,325	11/16/2007	FO
Merrick's of Nebraska	Oxford	NE	37	8/4/2010	MR
Oxford Locker	Oxford	NE	4,080	8/27/2008	FO
Oxford Locker	Oxford	NE	4,080	8/23/2010	FO
Max Schultz	Oxford	NE	110	7/31/2012	Repair
Oxford Baptist Church	Oxford	NE	5,027	8/14/2012	FO
Dinsdale's	Palmer	NE	5,187	8/14/2009	FO/MR
Performance Plus Liquids	Palmer	NE	1,584	2/18/2008	FO
County Excavating & Const. Inc.	Palmer	NE	84,370	10/8/2012	MR
Dinsdale's	Palmer	NE	5,187	10/10/2012	RC
Pawnee City Fire Dept	Pawnee City	NE	4,152	8/9/2010	FO
Pawnee Co Rural Water District	Pawnee City	NE	798	11/5/2010	FO
Sunrise Publications, Inc.	Pawnee City	NE	409	8/9/2010	MR/FO
Pawnee City Fire Dept	Pawnee City	NE	2,838	10/4/2012	IF
Masonic Lodge	Phillips	NE	2,639	3/3/2008	FO
Tamko	Phillipsburg	KS	2,800	7/31/2010	FO
Tamko	Phillipsburg	KS	8,058	10/6/2010	MR/FO
Tamko	Phillipsburg	KS	120	5/8/2012	FO
Landmark Implement	Phillipsburg	KS	16,741	7/30/2012	MR

Terry Gronewold	Pickrell	NE	1,352	10/7/2010	IF
Tom Lutjens	Platte Center	NE	2,100	7/15/2009	MR
Bauer Well Drilling	Pleasanton	NE	3,208	5/5/2011	MR
Chandler Well Service	Pleasanton	NE	2,808	8/29/2009	FO
Cruise Farms	Pleasanton	NE	5,580	1/10/2012	IF
Cruise Farms	Pleasanton	NE	3,456	1/16/2012	IF
Cruse Farms	Pleasanton	NE	3,681	6/30/2007	MR
Dorothy Farms Inc.	Pleasanton	NE	5,054	7/9/2011	MR
Ed Dael	Pleasanton	NE	3,175	8/14/2009	MR
Errol Phillips	Pleasanton	NE	4,131	8/5/2009	MR
George Kucera	Pleasanton	NE	2,212	8/31/2009	MR
Lynn Lichyt	Pleasanton	NE	660	8/21/2010	MR
Pleasant Fire Hall	Pleasanton	NE	4,808	9/21/2007	MR
Tom Noller	Pleasanton	NE	2,121	10/9/2009	IF
Trotter	Pleasanton	NE	355	12/22/2009	IF
Trotter	Pleasanton	NE	36	3/15/2010	IF
Mark Graham	Prairie View	KS	3,000	11/27/2010	IF
Trevor Lienemann	Princeton	NE	3,243	10/28/2011	MR
Cardinal Construction	Prosser	NE	1,158	3/4/2011	IF
Ray's Pharmacy Inc.	Quinter	KS	3,016	4/29/2004	Ply
Bethlehem Lutheran Church	Ravenna	NE	6,577	8/30/2007	MR
Farmers Coop	Ravenna	NE	20	1/6/2011	IF
Farmers Coop	Ravenna	NE	383	1/27/2011	IF
Farmers Coop	Ravenna	NE	2,965	7/30/2011	FO
Farmers Coop	Ravenna	NE	6,069	3/30/2007	MR
Gerald Reimers	Ravenna	NE	6,318	8/21/2009	FO
Gerald Reimers	Ravenna	NE	2,309	8/22/2009	IF
Lower Loup Investment LLC	Ravenna	NE	7,510	6/25/2011	MR
Prince of the Road	Ravenna	NE	Repair	6/25/1905	Repair
Ravenna Fire Dept	Ravenna	NE	4,845	6/18/2009	MR
Scott Eilenstine	Ravenna	NE	414	1/6/2011	IF
Bryan Williams	Ravenna	NE	1,214	8/15/2012	IF
Iva Noble	Raymond	NE	361	11/17/2011	IF
Don Thomas	Raymond	NE	1,488	7/24/2009	MR
Terry Hoit	Red Cloud	NE	8,153	6/17/2010	MR
KenWorks	Red Cloud	NE	480	5/25/2012	IF
Kohmetscher Feed & Service	Red Cloud	NE	512	9/17/2012	DB
Theater	Republican City	NE	2,584	6/23/2000	FO
Tod Olsen	Republican City	NE	600	4/5/2010	DB
Dan Meyers	Riverdale	NE	72	5/28/2010	Ply
Conoco Phillips	Roca	NE	4,623	11/17/2003	MR
Larry Huenina	Roca	NE	3,402	4/30/2008	MR
Rodney Egger	Roca	NE	5,279	5/7/2012	MR
Ray Bonifas	Roseland	NE	1,740	7/30/2010	IF
Ronald Willmes	Roseland	NE	441	9/14/2011	IF
Silver Lake High School	Roseland	NE	966	10/26/2009	FO
Dennis Trausch	Roseland	NE	4,644	8/30/2012	MR
Silver Lake High School	Roseland	NE	233	11/1/2012	RC
C & M Supply	Ruskin	NE	886	9/24/2002	FO
Dave Mussman	Ruskin	NE	804	11/30/2007	FO
Ruskin Community Center	Ruskin	NE	1,824	9/24/2002	RC
Marvin Dowse	Sargent	NE	4,320	7/22/2011	MR

Sargent Insurance Agency	Sargent	NE	1,118	2/25/2008	FO
Jeff Thompson	Scandia	KS	2,314	11/16/2010	IF
Aurora Coop	Sedan	NE	1,100	5/25/2004	FO
Briggs Feed Yard	Seward	NE	571	11/16/2007	FO
Dale Tonniges	Seward	NE	5,346	6/15/2011	MR
Progressive Sheet Metal	Seward	NE	2,858	8/25/2010	IF
Briggs Feedyard	Seward	NE	886	7/25/2012	MR
Shelby Lumber Inc.	Shelby	NE	7,884	7/22/2012	MR
Cargill	Shelton	NE	1,200	10/11/2007	FO
Cargill	Shelton	NE	211	7/2/2010	FO
Cargill	Shelton	NE	200	4/29/2011	FO
M & B Livestock	Shelton	NE	7,380	12/21/2010	IF
ADC	Sidney	NE	5,000	7/14/2010	FO/RC
Court House	Sidney	NE	25,341	8/19/2008	FO
Court House	Sidney	NE	3,724	7/16/2010	FO
Prestolite Wire Corp	Sidney	NE	139,373	6/17/1999	MR
Twin River Public Schools	Silver Creek	NE	4,320	6/14/2010	IF
Organon API	Sioux City	IA	25,455	4/17/2008	FO
Prince Hydraulics	Sioux City	IA	118,920	9/15/2006	MR
Lane Devlin	Smith Center	NE	9,193	12/3/2010	IF
Orscheln Farm & Home	Smith Center	KS	1,485	8/13/2004	HC
Gary Vandergiesen	Smith Center	KS	1,100	12/4/2012	IF
Central Nebraska Implement Inc.	Spalding	NE	24,786	7/1/2008	MR
Mark Berger	Spalding	NE	7,028	9/7/2010	MT
Gana Trucking	Sprague	NE	6,037	9/28/2012	MR
Keya Paha High School	Springview	NE	11,466	7/10/2008	DB
Spring View Senior Center	Springview	NE	5,346	6/16/2009	MR
Springview Implement	Springview	NE	11,160	8/8/2012	MR
Family First Dental	St. Paul	NE	1,809	11/2/2012	RC
Jacobs Ford	St. Paul	NE	4,970	7/1/2004	FO
Jacobs Ford	St. Paul	NE	2,840	5/2/2007	FO
Jacobs Ford	St. Paul	NE	20	6/23/2011	MR
Jim Kehm	St. Paul	NE	528	6/28/2005	FO
Jacobs Ford	St. Paul	NE	7,810	6/5/2012	RC
Lloyd Yantiss	Stamford	NE	2,689	6/18/2007	MR
Old Ace Hardware	Stamford	NE	4,380	4/26/2006	MR
Stamford Fire Building	Stamford	NE	2,767	7/6/2006	MR
Frontier County Fairgrounds-Stockville	Stockville	NE	8,100	7/13/2009	MR
Hair It Is	Stratton	CO	2,006	6/24/2003	RC
Doug Nuttelman	Stromsburg	NE	3,165	9/24/2010	FO
Doug Nuttelman	Stromsburg	NE	802	12/22/2010	IF
Leo Glynn	Summerfield	NE	3,317	11/15/2012	MR
Tubs Pub	Sumner	NE	3,240	9/1/2011	FO
Marsha Ray	Superior	NE	3,297	6/9/2010	MR
Mike Jensen	Superior	NE	2,183	9/1/2011	IF
Masonic Lodge	Superior	NE	3,154	6/9/2010	Ply
Masonic Lodge	Superior	NE	20	10/19/2012	Repair
Quality Builders	Sutton	NE	216	4/23/2009	DB
AgVenture Seed Co.	Sutton	NE	34,755	8/9/2012	MR
John Berkebile	Tecumseh	NE	1,028	12/14/2012	IF
Louis Schropfer	Tobias	NE	240	5/27/2011	MR
CPI	Trumbull	NE	9,725	6/10/2011	MR

Dan Saathoff	Trumbull	NE	2,592	8/2/2011	MR
Carrie & Bob Soucie	Upland	NE	303	6/17/2011	FO
Pioneer	Upland	NE	6,510	10/20/2010	FO
Stephanie Baxter	Upland	NE	538	1/7/2011	IF
Upland City Auditorum	Upland	NE	4,585	6/25/2011	MR/FO
Pioneer	Upland	NE	6,510	8/29/2012	DB
Jim Staehr	Utica	NE	8,611	12/5/2012	IF
Calvin Paasch	Valley	NE	3,076	7/1/2010	MR
Kirby's Auto Parts	Valley	NE	2,744	7/29/2009	FO
Randy Stratton	Valparaiso	NE	616	1/4/2012	IF
Tvrdy's One-Stop	Valparaiso	NE	5,944	11/1/2011	MR
Gene Fabrizius	Wa keeney	KS	4,674	5/1/2005	MR
OOP, Inc.	Wahoo	NE	21,313	11/1/2011	MR/FO
Tyler Graphics	Wahoo	NE	206	4/29/2008	Repair
Virgl Implement, Inc	Wahoo	NE	18,058	6/13/2011	MR
Gary Hanke	Wahoo	NE	500	6/5/2012	FO
Gary Hanke	Wahoo	NE	737	8/22/2012	MR
Crane Valve CO	Washington	IA	20,700	4/30/2000	MR
Crane Valve CO	Washington	IA	20,700	9/21/2001	MR
Crane Valve CO	Washington	IA	19,279	7/12/2002	MR
Crane Valve CO	Washington	IA	19,279	9/28/2003	MR
Jensen Farms	Weldona	CO	19,367	9/29/2003	RC
Jensen Farms	Weldona	CO	1,944	7/16/2008	FO
Jensen Farms	Weldona	CO	786	7/16/2008	RC
Cuming County Public Power Dist	West Point	NE	3,264	7/7/2007	FO
Edward Drieling	West Point	NE	245	2/24/2011	IF
Duane Klute	Westboro	MO	4,968	2/22/2012	IF
Klute Farms	Westboro	MO	4,236	8/31/2011	IF
Pepek's Lawn Service	Wilber	NE	1,279	9/13/2011	MR
C.O. & S. Inc	Wilcox	NE	2,692	6/18/2010	FO
C.O. & S. Inc	Wilcox	NE	2,692	10/6/2010	RC
Dan Git	Wilcox	NE	4,574	10/5/2010	MR
Hall's Oil	Wilcox	NE	3,629	5/6/2011	MR
John Beckmann	Wilcox	NE	1,782	5/22/2008	MR
Town & Country	Wilcox	NE	4,752	10/6/2010	MR
Wayne Brummer	Wilcox	NE	4,186	7/23/2007	MR
Wilcox Village	Wilcox	NE	3,715	9/1/2007	MR
Laird Ranch	Wilcox	NE	540	9/5/2012	IF
Wilsonville-Hindley Rural Fire Dist	Wilsonville	NE	3,454	8/30/2007	MR
Dave & Sharon Hyke	Wilsonville	NE	5,489	6/5/2012	MR
ABC Seamless	Wood River	NE	2,181	6/14/2006	FO
ABC Seamless	Wood River	NE	8,208	5/8/2007	MR
ABC Seamless	Wood River	NE	6,888	10/1/2007	FO
ABC Seamless	Wood River	NE	5,936	11/1/2007	FO
ABC Seamless	Wood River	NE	5,443	5/17/2011	MR
Larry Kruse	Wood River	NE	833	6/27/2005	RC
Markussen Bookkeeping	Wood River	NE	1,260	6/27/2005	RC
Markussen Bookkeeping	Wood River	NE	1,003	6/27/2005	RC
Prairie View Apt	Wood River	NE	15,005	7/23/2008	RC
Prairie View Apt.	Wood River	NE	2,200	10/30/2008	FO
Presbyterian church	Wood River	NE	210	1/21/2011	IF
Presbyterian church	Wood River	NE	210	1/21/2011	IF

Wood River School	Wood River	NE	726	8/16/2012	MR
Van Dyke	Woonsocket	SD	43,200	5/1/1998	MR
B & B Electric	Wray	CO	4,374	6/24/2003	MR
Super Foods, Inc.	Wymore	NE	686	10/15/2011	FO
Kolberg-Pioneer	Yankton	SD	15,876	10/15/2010	MR
Baldwin Filters	Yankton	SD	720	6/15/2012	MR
Baldwin Filters	Yankton	SD	181,224	6/28/2012	MR
Bob Cunningham	York	NE	652	10/11/2011	DB
Choice Floor Specialists	York	NE	10,498	8/2/2011	MR
City of York	York	NE	15,531	9/15/2005	MR
City of York	York	NE	7,240	10/20/2005	MR
City of York	York	NE	11,200	6/3/2008	MR
Emmanuel Lutheran School	York	NE	15,147	6/26/2010	FO
Extreme Automotive	York	NE	3,234	9/15/2005	MR
Hamilton Sundstrand	York	NE	1,060	10/19/2001	MR
Hamilton Sundstrand	York	NE	122,354	6/29/2002	Ply
Hitz Towing	York	NE	2,730	9/13/2005	MR
Kroy Industries	York	NE	13,578	7/3/2003	MR
Nabers Truck & Equipment	York	NE	5,700	8/3/2011	RC
Nabers Truck & Equipment	York	NE	5,600	11/9/2005	FO
Napa Store	York	NE	8,100	10/1/2010	MR
Orscheln Farm & Home	York	NE	11,124	4/4/2007	FO
Terry Watt	York	NE	3,440	10/28/2006	MR
York Equipment	York	NE	18,426	7/7/2004	FO
York Equipment	York	NE	6,474	7/20/2005	FO
York General Hospital	York	NE	2,402	5/24/2007	MR
Jerry Stahr	York	NE	7,586	4/3/2012	IF
Orscheln Farm & Home	York	NE	11,189	4/26/2012	RC
Hamilton Sundstrand	York	NE	20	5/8/2012	MR
Tim Zieg	York	NE	20	6/7/2012	Repair
Mary Cunningham	York	NE	652	7/6/2012	Ply

**TOTAL SQUARE FOOTAGE:**

**6,987,620**

MR = Metal Roof Coatings

FO = Spray Polyurethane Foam on Roof

RC = Foam or Metal Roof that been resprayed with coatings

Ply = Coating and Fabric

IF = Foam sprayed inside of a building for insulation

HC or FX = Hy-Crown or Flexion are Single ply roof systems

DB = Spraying coating directly to the substrate (no foam or fabric)

Alumify = Aluminum colored oil base paint

Maintain = White rust inhibition coating for wall or roofs



# ROOF MATE

SUSTAINABLE ROOF COATINGS

*Reflective Solutions for a Brighter Future*

## THE SUSTAINABLE ROOFING SYSTEM

**T**hank you for your interest in UNITED COATINGS' ROOF MATE —The Sustainable Roofing System. As pioneers in roof coatings technology, we developed the first fluid-applied acrylic roofing elastomer over 30 years ago. The concept is no different from using a coat of paint to protect the siding on a house or the body of a car. We have simply adapted the same principal to protect the integrity of the roofing substrate, whether it is new or retrofit. Incorporating a premium quality advanced acrylic elastomer coating, ROOF MATE forms a waterproof, monolithic membrane, preventing further degradation of the underlying roofing system.

ROOF MATE incorporates all of the positive features now being touted throughout the roofing industry. Benefits such as reflectivity, maintainability and sustainability. All roofing systems will eventually begin to break down as they age. The ROOF MATE System has evolved to include primers and reinforcement as necessary, so that it can be applied to virtually any aged, yet still sound, roofing substrate. By extending the life of the existing roof, the Building Owner not only saves on the cost of roof replacement, but also cuts energy consumption, lowers air conditioning costs, reduces pollution and eases the burden on our already overflowing landfills.

The viability of the system and its positive benefits have been investigated and documented by not only the roofing industry, but by several independent testing organizations. Local, State and Federal Government agencies are now heavily involved in supporting the benefits of "Cool Construction" materials. We are proud of the fact that ROOF MATE from UNITED COATINGS is ENERGY STAR®, CRRC, UL, FM, ICC and Dade County Florida approved.

UNITED COATINGS is also a partner in the Environmental Protection Agency's ENERGY STAR® Roof Products Program. Our roof coatings have been independently tested and certified to meet Cool Roof Rating Council (CRRC) standards, and qualify for California Title 24 and LEED certification.

Check out the following pages to see what ROOF MATE can do for your aging roof—or for your new roof as well. If you would like additional information, samples, a free survey, or just want to talk roofing, give us a call at (800) 541-4383 or (480) 754-8900, or visit our website at [www.unitedcoatings.com](http://www.unitedcoatings.com). Thank you for your interest in our products. We look forward to solving your roofing problems with proven solutions. ROOF MATE from UNITED COATINGS...Longevity By Design®.



# WHY CONSIDER A REFLECTIVE COATING?

## LOWER ROOF TEMPERATURES

Highly reflective white pigments reflect 85+% of the sun's radiant heat, dramatically lowering the temperature of the underlying roof substrate and preventing further degradation.

## LOWER INTERIOR TEMPERATURES

Since most of the sun's radiant heat is reflected rather than absorbed into the roof substrate, interior temperatures are reduced dramatically.

## ELIMINATES TEAR-OFFS

Discarded roofing materials take up a tremendous amount of our ever-diminishing landfill space. Application of a protective coating system prior to failure of an existing roof prevents further degradation, ultimate tear-off and subsequent replacement expense.

## REDUCED ENERGY CONSUMPTION

Preserving our precious energy resources has become a major focus of government and industry, as building codes are amended to recognize the benefits of "heat reflective" roof systems as a method of reducing energy costs and improving air quality.

## REDUCED "HEAT ISLAND" EFFECT

Dark colored construction materials, combined with a reduction in vegetation, has created a phenomenon labeled "heat islands" in most of our urban metropolises, with temperatures up to 12°F higher than surrounding rural areas. Reflective roof coatings are classified as "cool construction materials", which help to minimize the negative effects associated with heat islands.

## BETTER AIR QUALITY

Because light colored roofs reflect most of the sun's radiant energy away from the roof substrate before it is converted into heat, the surrounding air temperature is lowered. Most pollution is dependent upon photochemical reactions whose rates are temperature dependent, therefore a slight reduction in air temperature can result in a dramatic decrease in atmospheric pollution.

## LOWER ELECTRICAL COSTS

Documented case studies show that a reflective white roof coating system substantially reduces air conditioning energy use, typically paying for itself within 5 years.

## SUSTAINABLE

Roof coatings systems require very low annual maintenance. Through periodic recoating, the elastomeric coating system can be extended to last the life of the building.

## MONOLITHIC

Roof coatings systems are liquid-applied and 100% adhered. This means there are no seams to come apart, no fasteners to come loose, no adhesives to disbond and no ballast adding unnecessary weight.

## INDEPENDENT TEST DOCUMENTATION

Numerous case studies by organizations such as the U.S. Department of Energy, Lawrence Berkeley National Laboratory, the Florida Solar Energy Center, Tennessee Valley Authority and the Roof Consultants Institute have verified the advantages obtained through the use of reflective coatings systems.





## CONCRETE ROOF SUBSTRATES

Concrete roof substrates inevitably crack and control joints eventually begin to fail, allowing moisture to penetrate to the interior. Chalky or punky concrete is sealed with a penetrating primer to solidify the surface. Moving cracks and control joints are individually detailed with caulk and/or reinforcing fabric. On more severely cracked or deteriorated surfaces, full fabric reinforcement can be installed over the entire roof. *Roof Mate* remains permanently flexible to bridge existing and future cracking, maintaining a waterproof elastomeric membrane.



**UNITED  
COATINGS**  
LONGEVITY BY DESIGN®  
A Subsidiary of Quest Specialty Chemicals™



# METAL ROOF SUBSTRATES

As metal roofs age they become more susceptible to corrosion, normally beginning at the seams and spreading throughout the panel. As gaskets degrade around the fasteners and come loose, allowing additional deflection between panels, leaks begin to occur. The **Roof Mate System** includes primers for inhibiting the spread of rust, as well as several options for sealing fasteners and reinforcing seams. Reinforcement methods include polyester fabric, self-adhesive butyl-backed fabric and discs, and fabric-free mastic systems.



**UNITED  
COATINGS**  
LONGEVITY BY DESIGN<sup>®</sup>  
A Subsidiary of Quest Specialty Chemicals<sup>™</sup>



## SINGLE PLY ROOF SUBSTRATES

Single-ply membranes, such as EPDM, Hypalon, PVC, Neoprene, CSPE, CPE, NBP and TPO all eventually succumb to the effects of extended exposure to the elements. These effects typically manifest themselves through degradation of the surface as it begins to oxidize, check and craze. Seams, whether heat-welded or glued, also eventually begin to come apart, allowing water intrusion beneath the membrane. **Roof Mate**, applied directly over these single-ply substrates, eliminates the need to tear off and/or reapply another single-ply sheet. By incorporating primers and reinforcement as necessary, the **Roof Mate System** effectively restores the membrane to its original water tight condition, while its permanent flexibility allows the elastomeric membrane to expand and contract with movement of the roof.

**UNITED  
COATINGS**  
LONGEVITY BY DESIGN<sup>®</sup>  
A Subsidiary of Quest Specialty Chemicals<sup>™</sup>



## **OTHER ROOF SUBSTRATES**

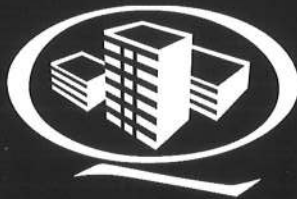
**B**oard-stock or sprayed-in-place insulation, transite, wood and composite shingles have also proven to be excellent candidates for application of the *Roof Mate System*. Contact UNITED'S Technical Service Department or your local Representative for specification assistance on any type of unusual or challenging roof coating requirement you might have. Chances are, we have a system designed to effectively extend the life of your particular roof substrate.

# *Join the ROOF MATE club...*

**American Airlines  
AT&T  
American Greetings  
Arizona Biltmore Hotel  
Arizona State University  
Bay Area Rapid Transit  
Burger King  
Capital Records  
César Chavez Adult Center  
CH<sub>2</sub>M Hill  
Coca Cola  
City of Las Vegas  
Cupertino Union School District  
Deluxe Corp-Current, Inc.  
Dupont  
East Bay Municipal Utility District  
El Conquistador Resort  
Equity Residential Properties  
Federal Aviation Administration  
Florida Power & Light  
Ford Motor Company  
Frito Lay  
General Dynamics  
Greyhound Bus Lines  
Guam Housing & Urban Renewal Auth.  
Guardian Self Storage  
Hanford Nuclear Site  
Hewlett Packard  
Honda  
Honeywell  
Honolulu International Airport  
Hyatt International  
IGA Stores  
Indianapolis School District  
Intel  
K-Mart**

**Marin Independent Journal  
Matson Freight  
Motorola  
National Nuclear Corporation  
National Park Service  
National Semiconductor  
National Weather Service  
Orbit Semiconductor  
Owens Corning  
Pay-N-Save  
PG&E  
Port of New Orleans  
Public Storage  
CNMI/Saipan Schools  
Santa Fe ISD  
Shell Chemical  
Siemens Corporation  
Stanford University  
Sun Microsystems  
Talieson West  
Teledyne  
Union Pacific Railroad Company  
University of Arizona  
University of California  
US Air Force  
US Air National Guard  
US Army  
US Army National Guard  
US Navy  
US Postal Service  
USDA Research Center  
Van Nuys Airport  
Verison Communications  
Warner Brothers Studios  
YMCA  
YWCA**

*...you'll like the companies we keep.*



# QUEST

CONSTRUCTION PRODUCTS

**UNITED COATINGS** **HYDROSTOP** LLC

2810 S. 18th Place • Phoenix, AZ 85034  
1-480-754.8900 1-800-541-4383  
[www.questconstructionproducts.com](http://www.questconstructionproducts.com)



**Board of Directors Responsibilities** (adopted 11/15/05, amended 11/14/07)

A. Responsibilities

1. Meetings

- a. NASB Board of Directors Meetings - Attend and participate in all meetings (normally January, March, June, August and November). Note: The first four meetings are held on a Saturday in Lincoln at the NASB office; the November meeting is held in conjunction with State Conference in Omaha. To be excused from a Board meeting, Directors should notify the NASB office before the meeting date.
- b. Annual Planning Meeting - The annual planning meeting is generally held in conjunction with the January Meeting.
- c. Area Membership Meetings - Participate in the Area Membership Meetings that serve your NASB Region, and fulfill related duties as assigned. Directors from the Metro districts, as well as the Executive Board, could expand their roles to assist with other larger regions. These duties would be assigned by the President.
- d. Annual State Conference - Held in November of each year.
- e. Educational seminars sponsored by the Association - especially those held in your respective region.

2. Serve as a member of one or more standing committees to which appointed. Committees include: Legislation, Membership, Conference, Nominating, Executive, Public Relations/Marketing, Awards of Achievement, Governor's Award, Policy Review Task Force, Oversight and any special committees deemed necessary.

3. Act as liaison between the school districts within the NASB Region and the NASB Board of Directors.

- a. Provide a direct connection to the board for the local school district(s) in the Director's region.
- b. Promote the services provided by the Association for the individual needs of each board within a region.
- c. A relative representative who represents a shared perspective of the issues impacting local school districts.
- d. A resource.
- e. Contact the NASB member school districts within the region you serve.

- f. Act as a direct resource to assist staff in updating annual membership information (i.e., current members of each board [and following elections] addresses, phone numbers, email, officer status, etc.).
  - g. Be prepared at each Board of Directors Meeting to give a brief report on the contacts, responses and information shared with your member school districts.
4. Maintain contact with state senators representing the NASB Region to which the director is elected.

## B. Duties

The Board of Directors shall:

1. implement the purposes of the Association and exercise general supervision over its affairs;
2. attend the annual Delegate Assembly and implement policies and programs adopted by that body;
3. enter into such agreements with other agencies to plan, implement, and administer projects, activities, and services designed to improve its member boards as it deems necessary;
4. act upon the Nominating Committee's recommended candidate for Vice President;
5. act upon appointments to committees;
6. recommend establishment of committees;
7. review boundaries of districts and make necessary adjustments in accordance with the Bylaws of the Association;
8. employ and evaluate the Executive Director under such terms of employment and at such salary as it may determine, to manage the affairs of the Association;
9. act upon the employment, evaluation, and salary of other personnel;
10. employ an independent certified public accountant to audit the financial records of the Association and submit an annual audit report to the Board of Directors for its adoption; and
11. adopt an annual budget.



**NASB Board of Directors  
Nomination Form for Region #10**

**THIS FORM MUST BE RECEIVED AT NASB BY AUGUST 16, 2013**

Name: \_\_\_\_\_

Address: \_\_\_\_\_

City, State, Zip: \_\_\_\_\_

Telephone: \_\_\_\_\_

Home

Work

Cellular

Email Address: \_\_\_\_\_

**Local Board Service**

Name of local school board: \_\_\_\_\_

Years of service on local board: \_\_\_\_\_

Attendance record on local board: (past 3 yrs.) \_\_\_\_\_

Current office held on local school board: \_\_\_\_\_

Past offices held on local school board: \_\_\_\_\_

\_\_\_\_\_

**Association Participation**

State Conferences: \_\_\_\_\_

National Conventions: \_\_\_\_\_

Workshops: \_\_\_\_\_

\_\_\_\_\_

Awards Received: \_\_\_\_\_

**Other Education-Related Public Service**

Commissions, Task Forces, and Committees: \_\_\_\_\_

\_\_\_\_\_

\_\_\_\_\_

**Personal Information**

Occupation: \_\_\_\_\_

Educational Background: \_\_\_\_\_

\_\_\_\_\_

Community Activities: \_\_\_\_\_

\_\_\_\_\_

Awards and Recognitions: \_\_\_\_\_

\_\_\_\_\_

Hobbies and Activities: \_\_\_\_\_

\_\_\_\_\_

**This nomination is submitted by:**

Name of NASB Member District or ESU: \_\_\_\_\_

Name of Board President or Vice President: \_\_\_\_\_

Date: \_\_\_\_\_

By checking this box, I assert the board president or vice president has read the completed Nomination Form and verifies its authenticity.

**THIS FORM MUST BE RECEIVED AT NASB BY AUGUST 16, 2013**

Return to: NASB  
Sallie Svatora  
1311 Stockwell St.  
Lincoln, NE 68502  
Or via e-mail to [ssvatora@nasbonline.org](mailto:ssvatora@nasbonline.org)

## SUPERINTENDENT'S REPORT

July 11, 2013

1. NASB will be hosting a School Finance and Budget Planning Workshop on July 23<sup>rd</sup> at the Cornhusker in Lincoln. Registration begins at 5:15 p.m., Dinner at 5:30 p.m. with the meeting beginning at 6:00 p.m. The workshop should be over by 8:45 p.m. Larry is registered, please let me know if you would like to attend. Registration deadline is July 16<sup>th</sup>.
2. Start planning now to attend the National School Boards Association Conference in New Orleans on April 5<sup>th</sup> through the 7<sup>th</sup>. Registration and housing opens in October, so I would like to have an idea by that time.
3. The NASB Area Membership Meeting will be held on September 4<sup>th</sup> in York. Registration begins at 4:45 p.m. and the opening session starts at 5:00 p.m. There are two skill building sessions at 5:30 and 6:20 p.m. The dinner and program will run from 7:10 p.m. to 8:30 p.m. Please let me know if you will be unable to attend.
4. Colin, Megan, and I will be attending Administrator Days in Kearney on July 31<sup>st</sup>, August 1<sup>st</sup>, and 2<sup>nd</sup>.