

Board of Education Regular Meeting

June 10, 2013 6:00 PM

District Board Office, Central Services
Building
765 Main St
Springfield, NE 68059

Agenda

- I. Site Committee Meeting
- II. Finance Committee Meeting
- III. Call to Order and Roll Call
- IV. Notice of Open Meetings Act - Posted
- V. Consent Agenda
 - V.A. Minutes of the Previous Month's Meetings
 - V.B. Treasurer's Report
 - V.C. Statement of Activity Fund Accounts
 - V.D. Recommendation for Bill Payment
 - V.E. Open and Option Enrollment Applications
 - V.F. Resignation
- VI. Items From Patrons on Agenda Items
- VII. Old Business
 - VII.A. Facility Improvement Planning
 - VII.B. 2013-14 Food Service Management Contract with Taher, Inc.
 - VII.C. 14-15 School Calendar
- VIII. New Business
 - VIII.A. Board of Education Self- Assessment
 - VIII.B. Review Policy- 5415 Anti-Bullying Policy
- IX. Reports
 - IX.A. Negotiations Timeline for Fall 2013
 - IX.B. Legislative Update
 - IX.C. Site Committee Report
 - IX.D. Policy Report/ Updates
- X. Items from Patrons on Items Not on Agenda
- XI. Advance Planning
- XII. Adjourn

Fund	Budget 12-13	Expenditures	Ending Balance	% spent
1100-Instruction	\$6,303,043	\$4,900,551	\$1,402,492	77.75%
1150- Limited English	\$10,000	\$161	\$9,839	1.61%
1160- Poverty Programs	\$85,144	\$52,400	\$32,744	61.54%
1200- SPED Instruction	\$190,675	\$135,455	\$55,220	71.04%
1210- SPED School Psychology	\$120,781	\$89,296	\$31,485	73.93%
1220- SPED	\$1,030,014	\$767,209	\$262,805	74.49%
1230- SPED tuition paid	\$305,000	\$147,282	\$157,718	48.29%
1240- SPED Clerical/ Aide	\$166,638	\$117,524	\$49,114	70.53%
1290- SPED/ Early Childhood	\$62,175	\$48,066	\$14,109	77.31%
1310- Gifted	\$70,725	\$49,102	\$21,623	69.43%
1320- Special Reading	\$44,043	\$27,687	\$16,356	62.86%
2120- Guidance Services	\$292,719	\$208,639	\$84,080	71.28%
2130- Health Services	\$159,621	\$111,328	\$48,293	69.75%
2190- Other Pupil Services	\$10,000	\$4,385	\$5,615	43.85%
2210- Learning Improvement	\$222,650	\$132,828	\$89,822	59.66%
2220- Libraries	\$255,311	\$197,431	\$57,880	77.33%
2230- Audio Visual Fund	\$13,150	\$4,501	\$8,649	34.23%
2310- Board of Education	\$35,000	\$33,165	\$1,835	94.76%
2320- Executive Administration	\$320,071	\$209,161	\$110,910	65.35%
2330- Public Relations	\$30,800	\$18,475	\$12,325	59.98%
2410- Office of the Principal	\$892,145	\$630,747	\$261,398	70.70%
2510- Gen. Admin Business Services	\$296,475	\$135,425	\$161,050	45.68%
2520- Vehicle Acquisition	\$13,000	\$8,353	\$4,647	64.25%
2610- Operation of Plant	\$867,908	\$610,607	\$257,301	70.35%
2620- Maintenance	\$366,208	\$235,616	\$130,592	64.34%
2750- Regular Transportation	\$490,500	\$329,121	\$161,379	67.10%
2760- SPED Transportation	\$237,000	\$161,339	\$75,661	68.08%
2790- Learning Community Transportation	\$30,000	\$15,257	\$14,743	50.86%
3135- High Ability	\$10,614	\$9,873	\$741	93.02%
4100- Title I	\$62,558	\$47,608	\$14,950	76.10%
4320- Title IIA	\$30,929	\$23,008	\$7,921	74.39%
4404- IDEA Base	\$80,614	\$58,586	\$22,028	72.67%
4408- IDEA Pre-Schools	\$14,885	\$10,591	\$4,294	71.15%
4410- IDEA Poverty	\$138,392	\$112,487	\$25,905	81.28%
4700- Carl Perkins	\$3,500	\$345	\$3,155	9.86%
6000- Summer School	\$22,713	\$0.00	\$22,713	0.00%
8000- Transfers	\$215,000	\$0.00	\$215,000	0.00%
Totals	\$13,500,001	\$9,643,609	\$3,856,392	71.43%
Spending Goal	\$12,900,000			74.76%



14801 S. 108th St.
Springfield, NE 68059
402-592-1300
www.springfieldplatteview.org

Finance Committee Report
May 2013

- Our cash balance from the General Fund is up from a year ago to \$5,074,928.65 than a year ago. Spending went down in May from a year ago and we had a larger tax draw that was missing from April.
- The projected spending for 2012-13 is between \$12.9 and \$13 million. I have showed this amount on our budget/ spending summary.
- We have receipts so far this year at \$9,736,509 up from last year at this time where we were at \$9,199,048, up \$537,461.
- The Budget Summary shows spending at \$9,643,609 for the fiscal year. We are trying to stay between \$12.9 and 13 million in spending, which is our conservative estimate in revenue for the 2012-13.
- Overall our balances are excellent in each account. If projected revenue comes in above estimate, we can look to do a few transfers this September.
- Now that the State legislature has finalized the state aid package for 2013-14, I will begin putting together our budget with the state forms and will share these with you in future work sessions. The budget is due in October.
- Summer maintenance items are progressing well. The principals are spending their remaining budget this month as well to prepare for 2013-14.

Board of Education Regular Meeting
May 13, 2013

The Policy Committee started at 6:00 p.m. Jenny Kreifels, Brenda Sherman, and Brian Wichman were present. The committee discussed a draft of an in and out of state travel policy for the district. Current policies were also reviewed. Bob Icenogle arrived at 6:07 p.m. and Kyle Fisher arrived at 6:25 p.m.

The Finance Committee started at 6:00 p.m. Finance reports were reviewed by the committee. Discussion of the bills took place. The committee meeting adjourned at 6:29 p.m.

A meeting of the Board of Education of Springfield Platteview Community Schools in the County of Sarpy, in the State of Nebraska, was convened in open and public session at 7:00 p.m., Monday, May 13, 2013, at the District Board Office, Central Services Building. Present: Lori Bartels, Kyle Fisher, Bob Icenogle, Jennifer Kreifels, Brenda Sherman, and Brian Wichman. Absent: None.

Notice of the meeting and committee meetings were given in advance thereof by posting in at least five public places as shown by the certificate of posting notice attached to these minutes. Notice of this meeting was simultaneously given to all members of the Board of Education, and a copy of their acknowledgment of receipt of notice and the agenda was communicated in the advance notice and in the notice to the Board of Education of this meeting. All proceedings hereafter shown were taken while the convened meeting was open to the attendance of the public.

Statute 84-1407 to 84-1414 require that the Open Meetings Act be posted in the meeting room. President Sherman informed the board and the public that the Act is located on the west wall of the board room.

Action to approve the Consent Agenda as presented passed with a motion by Fisher and a second by Kreifels. Vote: Yeas - Bartels, Fisher, Icenogle, Kreifels, Wichman. Nays - None. Abstain - Sherman.

There were no items from patrons on agenda items.

Vicki Banahan, Fairbury Public Schools and Kyle Fisher, Springfield Platteview Community Schools have been nominated for NASB Legislation Committee Member #13. Each member board represented by Legislation Committee Member #13 is entitled to one vote. Action to vote for Kyle Fisher to the NASB Legislative Member #13 Committee passed with a motion by Wichman and a second by Icenogle. Vote: Yeas - Bartels, Fisher, Icenogle, Kreifels, Sherman, and Wichman. Nays - None.

Action to direct the superintendent to work with the Nebraska Department of Education and Taher, Inc. to formulate a contract and bring it back for Board approval in June passed with a motion by Kyle Fisher and a second by Lori Bartels. Vote: Yeas - Bartels, Fisher, Icenogle, Kreifels, Sherman, and Wichman. Nays - None.

The discussion on adding a Teammates program for 2013-14 has been tabled.

The Superintendent and Board of Education have been discussing a classified staff plan for several months and what changes need to occur due to the

Affordable Health Care Act. Action to approve the part-time classified staff hours reduction to 29 hours per week with an increase of 4% in wages. Increase other classified staff employees 2% for the 2013-14 school year passed with a motion by Fisher and a second by Bartels. Vote: Yeas - Bartels, Fisher, Icenogle, Kriefels, Sherman, and Wichman. Nays - None.

The Superintendent and Board of Education discussed an Interlocal Agreement with the City of Springfield for the use and improvements of the fields for baseball and softball. Action to approve the Interlocal Agreement with the City of Springfield as presented passed with a motion by Fisher and a second by Wichman. Vote: Yeas - Bartels, Fisher, Icenogle, Kriefels, Sherman, and Wichman. Nays - None.

The Superintendent discussed summer maintenance items and budget for 2013 with the Board. Action to approve spending up to \$127,700 from the Building Fund for summer maintenance projects as outlined in the summer maintenance list passed with a motion by Fisher and a second by Wichman. Vote: Yeas - Bartels, Fisher, Icenogle, Kriefels, Sherman, and Wichman. Nays - None.

Four new probationary contracts have been offered for the 2013-2014 school year and presented to the board for approval. Meryl Engen, who served as a CADRE teacher for the district this year, has been offered a third grade teaching position at Westmont Elementary with initial placement of MA+0, Step 2 on the salary schedule. Cortney Pietryga, who also served as a CADRE teacher this year, has been offered a 5th grade teaching position at Springfield Elementary with initial placement of MA+0, Step 2 on the salary schedule. Laura Bomgaars has been offered a Kindergarten position at Springfield Elementary with initial placement of BA+0, Step 1 on the salary schedule, and Alex Dostal has been offered a secondary math position at Platteview High School with initial placement of BA+0, Step 1 on the salary schedule. Richards recommended approval of these four probationary contracts. Action to approve the new teacher contracts for 2013-14 as presented passed with a motion by Kreifels and a second by Wichman. Vote: Yeas - Bartels, Fisher, Icenogle, Kriefels, Sherman, and Wichman. Nays - None.

With the Affordable Health Care Act now in effect, employee hours tracking will become more essential. It is recommended by our law firm that we install a time clock system to accurately track employee hours to ensure compliance with the Affordable Health Care Act and other labor laws. Three bids were received and Superintendent Richards reviewed them and made a recommendation. Action to approve the purchase and installation of a time clock system, provided by Harris Computer Systems at the price of \$13,275 passed with a motion by Fisher and a second by Wichman. Vote: Yeas - Bartels, Fisher, Icenogle, Kriefels, Sherman, and Wichman. Nays - None.

Sherman reported on the Policy Committee meeting. Superintendent Richards reported on the latest information coming from the Nebraska State Legislature affecting school districts, the latest state aid information relating to SPCS 2013-14 budget, and shared good news stories from around the school district related to student and staff success. Platteview High School Principal, Angela Simpson, reported on the College Access Pep rally.

There were no items from patrons on items not on the agenda.

Board members reviewed their upcoming schedule of meetings, trainings, and conventions. Significant school calendar items were also discussed.

Action to enter into executive session at 8:00 p.m. for the purpose of the Superintendent evaluation, for the protection of the public interest and for the prevention of needless injury to the reputation of an individual passed with a motion by Fisher and a second by Kreifels. Vote: Yeas - Bartels, Fisher, Icenogle, Kriefels, Sherman, and Wichman. Nays - None.

Action to return from executive session at 8:38 p.m. passed with a motion by Wichman and a second by Bartels. Vote: Yeas - Bartels, Fisher, Icenogle, Kriefels, Sherman, and Wichman. Nays - None.

Action to adjourn at 8:39 p.m. passed with a motion by Kreifels and a second by Wichman. Vote: Yeas - Bartels, Fisher, Icenogle, Kriefels, Sherman, and Wichman. Nays - None.

Thoma Bumgardner, Recording Secretary

Accepted: Jenny Kreifels, Secretary Board of Education

Board of Education Work Session

May 22, 2013

A meeting of the Board of Education of Springfield Platteview Community Schools in the County of Sarpy, in the State of Nebraska, was convened in open and public session at 7:00 p.m., Wednesday, May 22, 2013, at the District Board Office, Central Services Building. Present: Lori Bartels, Kyle Fisher, Bob Icenogle, Jennifer Kreifels, Brenda Sherman, and Brian Wichman. Absent: None.

Notice of the meeting and committee meetings were given in advance thereof by posting in at least five public places as shown by the certificate of posting notice attached to these minutes. Notice of this meeting was simultaneously given to all members of the Board of Education, and a copy of their acknowledgment of receipt of notice and the agenda was communicated in the advance notice and in the notice to the Board of Education of this meeting. All proceedings hereafter shown were taken while the convened meeting was open to the attendance of the public.

Statute 84-1407 to 84-1414 require that the Open Meetings Act be posted in the meeting room. President Sherman informed the board and the public that the Act is located on the west wall of the board room.

There was no public comment.

The Board discussed possible facility projects within the district with DLR Group and their potential costs.

The Teammates request for program was tabled for a later meeting.

Motion to enter into executive session at 9:30 PM for the protection of public interest and for a strategy session regarding real estate and district boundaries passed with a motion by Fisher and a second by Bartels. Vote: Yeas - Bartels, Fisher, Icenogle, Kreifels, Sherman, Wichman. Nays - None.

Action to return from executive session at 10:19 p.m. passed with a motion by Fisher and a second by Kreifels. Vote: Yeas - Bartels, Fisher, Icenogle, Kreifels, Sherman, Wichman. Nays - None.

Action to adjourn at 10:20 p.m. passed with a motion by Kreifels and a second by Wichman. Vote: Yeas - Bartels, Fisher, Icenogle, Kreifels, Sherman, Wichman. Nays - None.

Thoma Bumgardner, Recording Secretary

Accepted: Jenny Kreifels, Secretary Board of Education

Administrative Revolving - May 2013

5/1/2013 through 5/31/2013

6/3/2013

Page 1

Date	Account	Num	Description	Memo	Category	Clr	Amount
BALANCE 4/30/2013							4,132.62
5/1/2013	Administrative	5237	POSTMASTE...	1-01-2510-341 POSTAGE		R	-4.67
5/3/2013	Administrative	5238	POSTMASTE...	1-01-2510-341 POSTAGE		R	-5.80
5/7/2013	Administrative	5239	POSTMASTE...	1-01-2510-341 POSTAGE		R	-8.37
5/14/2013	Administrative	5240	POSTMASTE...	1-01-2510-341 POSTAGE		R	-22.27
5/14/2013	Administrative	TXFR	TRANSFER F...			R	517.01
5/16/2013	Administrative	5241	S MARLA JANAK	1-22-1100-318 --Split--		R	-1,377.37
5/16/2013	Administrative	5242	SHERYL KRA...	1-22-2120-410 SUPPLIES		R	-94.14
5/20/2013	Administrative	5243	CITY OF SPR...	3-06-2515-000 BALL FIELD I...		R	-10,109.33
5/20/2013	Administrative	5244	POSTMASTE...	1-01-2510-341 POSTAGE		R	-6.60
5/20/2013	Administrative	TXFR	TRANSFER F...			R	10,109.33
5/23/2013	Administrative	5246	SARPY COU...	1-01-2330-318 REGISTR FEE			-125.00
5/24/2013	Administrative	5247	POSTMASTE...	1-01-2510-341 POSTAGE		R	-8.91
5/30/2013	Administrative	5248	POSTMASTE...	1-01-2510-341 POSTAGE			-15.30
5/1/2013 - 5/31/2013							-1,151.42
BALANCE 5/31/2013							2,981.20
TOTAL INFLOWS							10,626.34
TOTAL OUTFLOWS							-11,777.76
NET TOTAL							-1,151.42

Student Fee - May 2013

5/1/2013 through 5/31/2013

6/3/2013

Page 1

Date	Account	Num	Description	Memo	Category	Clr	Amount
BALANCE 4/30/2013							3,589.50
5/3/2013	STUDENT FE...	1149	MICHELLE M...		OUTDOOR ED	R	-99.69
5/3/2013	STUDENT FE...	1150	KATHY ARNA...		OUTDOOR ED	R	-17.92
5/3/2013	STUDENT FE...	1151	SHIRTS & M...		OUTDOOR ED	R	-1,393.00
5/3/2013	STUDENT FE...	1152	JOANNA JOH...		OUTDOOR ED	R	-14.36
5/6/2013	STUDENT FE...	DEP	OUTDOOR E...		OUTDOOR ED	R	12.00
5/7/2013	STUDENT FE...	DEP	OUTDOOR E...		OUTDOOR ED	R	495.00
5/13/2013	STUDENT FE...	1153	GOOD LIFE ...		OUTDOOR ED	R	-85.00
5/13/2013	STUDENT FE...	1154	SPRINGFIEL...		OUTDOOR ED	R	-411.35
5/13/2013	STUDENT FE...	1155	EASTERN NE...		OUTDOOR ED		-2,068.18
5/1/2013 - 5/31/2013							-3,582.50
BALANCE 5/31/2013							7.00
TOTAL INFLOWS							507.00
TOTAL OUTFLOWS							-4,089.50
NET TOTAL							-3,582.50

Nebraska Public Agency Investment Trust

**PO Box 82529
Lincoln, NE 68501
(800) 640-8817
(402) 323-1615**

Account Activity for May 01, 2013 to May 31, 2013

Participant Name:

SOUTH SARPY SCHOOL DISTRICT #46
14801 S 108TH ST
SPRINGFIELD NE 68059-4925

Account Number: 126649-001

Beginning Balance: \$68,520.87

<u>Date</u>	<u>Description</u>	<u>Authorization</u>	<u>Amount</u>	<u>Balance</u>
5/31/2013	Auto-Post May Interest, Purchase		\$0.62	\$68,521.49

Ending Balance: \$68,521.49



**Nebraska Public Agency Investment Trust
Daily Balance and Interest Report for: May 2013**

Name: SOUTH SARPY SCHOOL DISTRICT #46

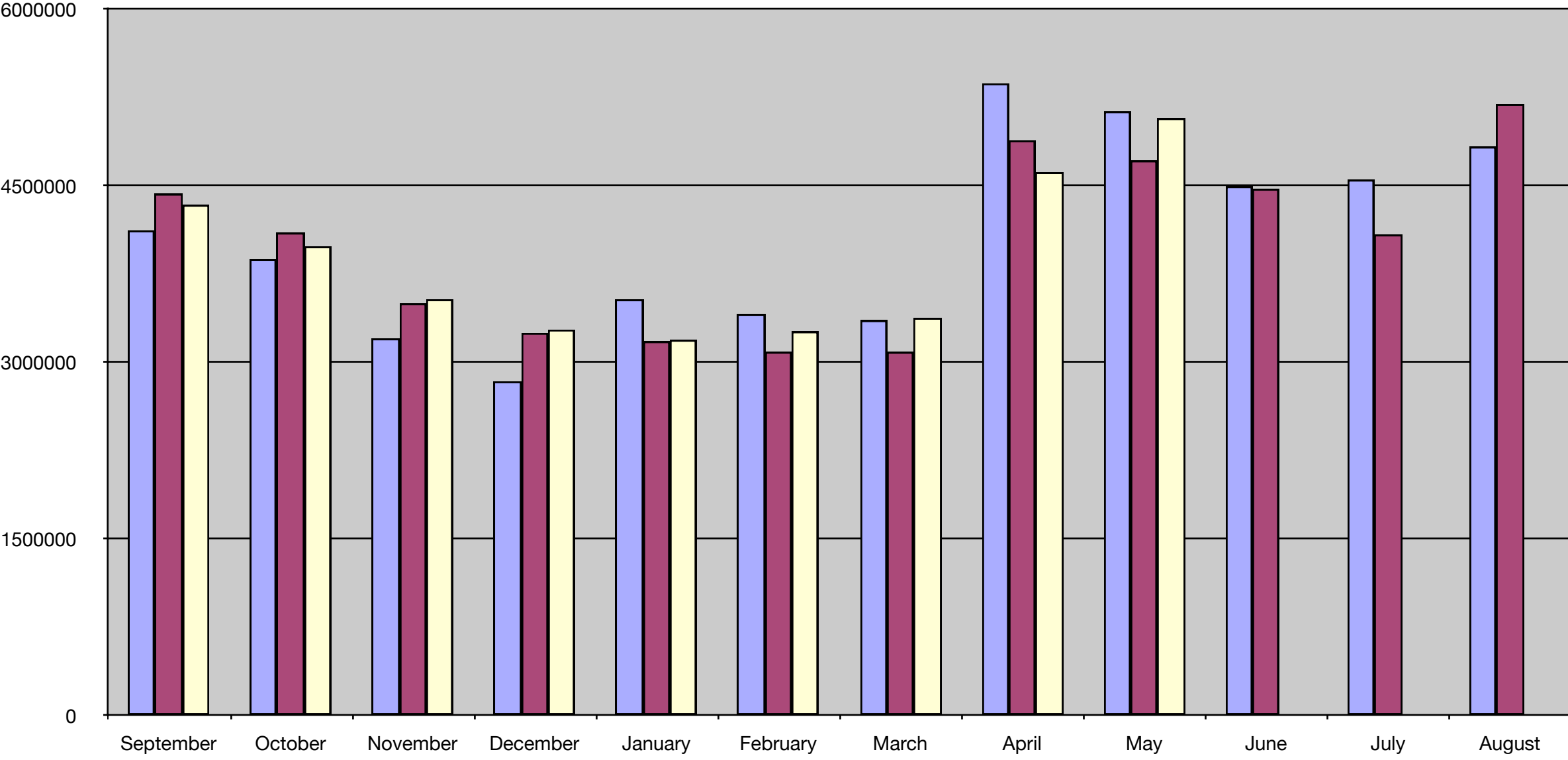
Account Number: 126649-001

Date	Daily Yield (Annualized)	Balance	Daily Accrual
5/01/2013	0.00010	\$68,520.87	\$0.02
5/02/2013	0.00010	\$68,520.87	\$0.02
5/03/2013	0.00010	\$68,520.87	\$0.02
5/04/2013	0.00010	\$68,520.87	\$0.02
5/05/2013	0.00010	\$68,520.87	\$0.02
5/06/2013	0.00010	\$68,520.87	\$0.02
5/07/2013	0.00010	\$68,520.87	\$0.02
5/08/2013	0.00010	\$68,520.87	\$0.02
5/09/2013	0.00010	\$68,520.87	\$0.02
5/10/2013	0.00010	\$68,520.87	\$0.02
5/11/2013	0.00010	\$68,520.87	\$0.02
5/12/2013	0.00010	\$68,520.87	\$0.02
5/13/2013	0.00010	\$68,520.87	\$0.02
5/14/2013	0.00010	\$68,520.87	\$0.02
5/15/2013	0.00010	\$68,520.87	\$0.02
5/16/2013	0.00010	\$68,520.87	\$0.02
5/17/2013	0.00010	\$68,520.87	\$0.02
5/18/2013	0.00010	\$68,520.87	\$0.02
5/19/2013	0.00010	\$68,520.87	\$0.02
5/20/2013	0.00010	\$68,520.87	\$0.02
5/21/2013	0.00010	\$68,520.87	\$0.02
5/22/2013	0.00010	\$68,520.87	\$0.02
5/23/2013	0.00010	\$68,520.87	\$0.02
5/24/2013	0.00010	\$68,520.87	\$0.02
5/25/2013	0.00010	\$68,520.87	\$0.02
5/26/2013	0.00010	\$68,520.87	\$0.02
5/27/2013	0.00010	\$68,520.87	\$0.02
5/28/2013	0.00010	\$68,520.87	\$0.02
5/29/2013	0.00010	\$68,520.87	\$0.02
5/30/2013	0.00010	\$68,520.87	\$0.02
5/31/2013	0.00010	\$68,520.87	\$0.02

Average Weighted Rate	Average Balance	Total Interest
0.01065 %	\$68,520.87	\$0.62

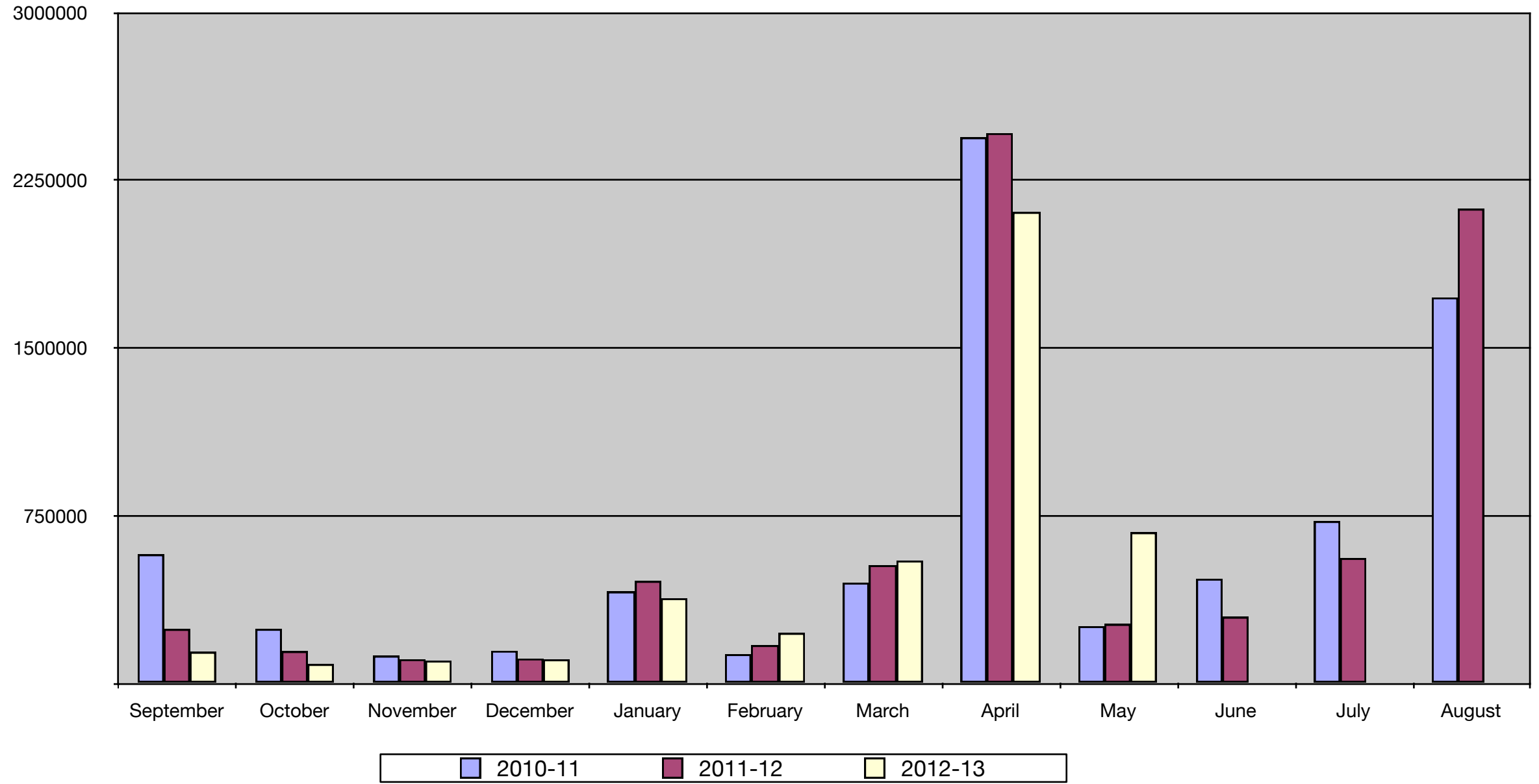
			2011	2012	2013
	Feb	General Fund	\$ 3,411,905.37	\$ 3,089,942.69	\$ 3,024,391.41
		Emp. Benefit Fund	\$ 455,554.78	\$ 496,579.96	\$ 478,811.92
		Building Fund	\$ 1,176,424.09	\$ 1,529,348.03	\$ 1,184,853.71
		School Lunch	\$ 87,322.27	\$ 126,163.76	\$ 94,878.08
		Bond Fund	\$ 169,128.83	\$ 150,724.76	\$ 134,471.78
		Depreciation Fund	\$ 149,977.48	\$ 210,356.21	\$ 210,623.63
		February Total	\$ 5,450,312.82	\$ 5,603,115.41	\$ 5,128,030.53
	Mar	General Fund	\$ 3,358,571.14	\$ 3,089,521.96	\$ 3,378,625.93
		Emp. Benefit Fund	\$ 455,640.90	\$ 502,861.67	\$ 478,849.96
		Building Fund	\$ 1,191,097.01	\$ 1,486,866.58	\$ 1,184,947.85
		School Lunch	\$ 95,516.92	\$ 123,723.58	\$ 95,332.74
		Bond Fund	\$ 184,333.53	\$ 167,973.22	\$ 152,291.31
		Depreciation Fund	\$ 150,012.20	\$ 210,382.15	\$ 210,640.37
		March Total	\$ 5,435,171.70	\$ 5,581,329.16	\$ 5,500,688.16
	Apr	General Fund	\$ 5,370,556.89	\$ 4,886,114.31	\$ 4,615,835.43
		Emp. Benefit Fund	\$ 455,713.30	\$ 502,915.06	\$ 478,891.94
		Building Fund	\$ 1,383,748.21	\$ 1,485,961.46	\$ 1,185,065.51
		School Lunch	\$ 97,264.09	\$ 130,182.01	\$ 112,494.23
		Bond Fund	\$ 353,749.82	\$ 345,556.43	\$ 322,893.16
		Depreciation Fund	\$ 150,042.00	\$ 210,407.94	\$ 210,658.84
		April Total	\$ 7,811,074.31	\$ 7,561,137.21	\$ 6,925,839.11
	May	General Fund	\$ 5,132,100.07	\$ 4,715,150.89	\$ 5,074,928.65
		Emp. Benefit Fund	\$ 455,793.21	\$ 502,968.45	\$ 478,932.61
		Building Fund	\$ 1,429,599.40	\$ 1,447,336.63	\$ 1,175,056.50
		School Lunch	\$ 93,425.01	\$ 123,235.45	\$ 104,209.24
		Bond Fund	\$ 316,422.81	\$ 302,480.43	\$ 323,217.79
		Depreciation Fund	\$ 150,074.89	\$ 210,430.28	\$ 210,676.73
		May Total	\$ 7,577,415.39	\$ 7,301,602.13	\$ 7,367,021.52

General Fund Balance 2012-13

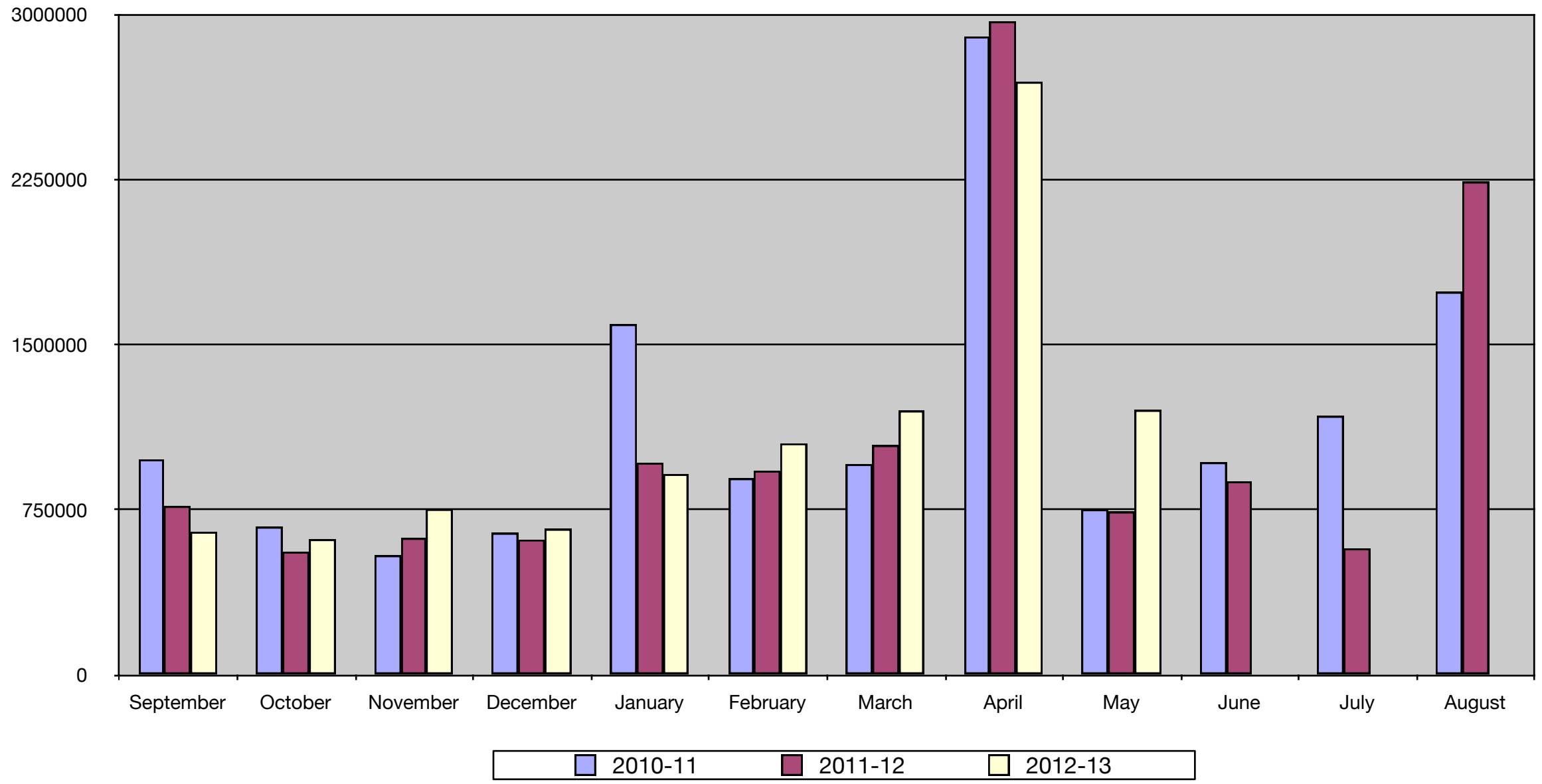


2010-11 2011-12 2012-13

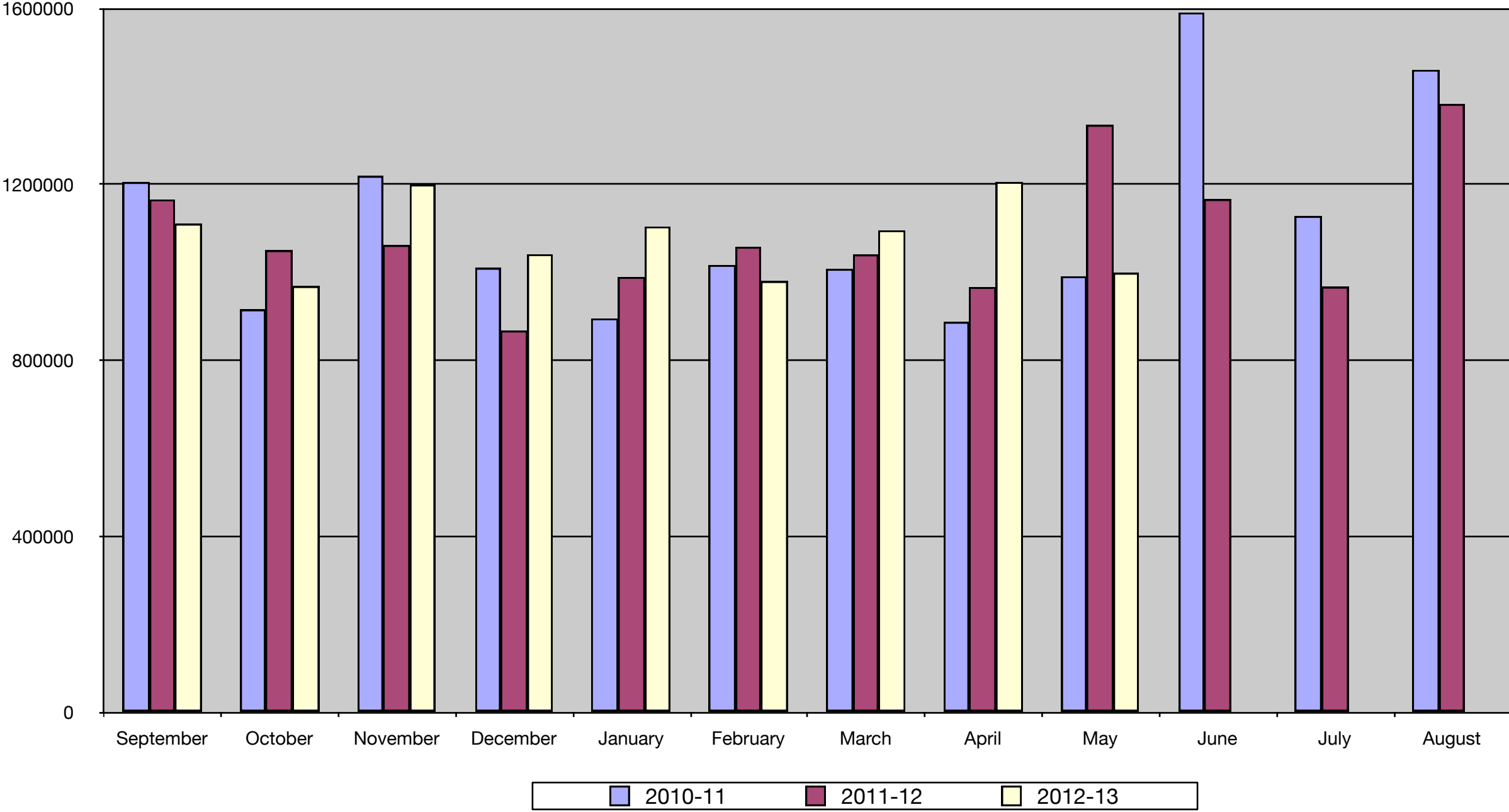
General Fund Tax Draws 2012-13



General Fund Receipts 2012-13



General Fund Expenses 2012-13



Balance as of last day of the month			
Month	2010-11	2011-12	2012-13
September	4,120,937	4,432,867	4,338,547
October	3,878,943	4,102,405	3,985,892
November	3,203,816	3,501,467	3,536,230
December	2,839,223	3,250,924	3,278,783
January	3,535,722	3,179,664	3,191,901
February	3,411,905	3,089,943	3,263,470
March	3,358,571	3,089,522	3,378,626
April	5,370,557	4,886,114	4,615,835
May	5,132,100	4,715,151	5,074,928
June	4,496,559	4,474,952	
July	4,552,632	4,086,579	
August	4,833,068	5,195,319	
Tax Draw			
Month	2010-11	2011-12	2012-13
September	576,133	242,348	139,895
October	242,742	143,088	85,459
November	122,621	107,279	100,777
December	145,119	110,261	106,390
January	409,818	457,212	379,986
February	129,707	170,125	224,566
March	449,387	527,732	548,216
April	2,441,341	2,460,560	2,107,552
May	255,006	264,592	674,661
June	467,045	296,739	
July	724,854	559,706	
August	1,725,494	2,122,164	
TOTALS	7,689,267	7,461,806	
Receipts			
Month	2010-11	2011-12	2012-13
September	978,157	766,094	649,211
October	671,984	558,644	615,551
November	542,349	621,089	752,636
December	644,302	613,946	662,527
January	1,591,838	962,582	911,505
February	892,124	926,471	1,050,937
March	956,436	1,042,417	1,199,470
April	2,898,012	2,967,045	2,692,301
May	751,225	740,760	1,202,370
June	964,938	878,204	
July	1,175,417	574,017	
August	1,738,765	2,239,318	
TOTALS	13,805,547	12,890,587	9,736,509
Expenses			
Month	2010-11	2011-12	2012-13
September	1,204,718	1,165,400	1,110,071
October	915,102	1,049,702	968,066
November	1,218,763	1,061,521	1,199,125
December	1,009,674	867,049	1,040,798
January	894,863	989,049	1,103,856
February	1,016,341	1,057,630	979,502
March	1,007,381	1,040,119	1,095,238
April	886,892	966,107	1,205,089
May	990,589	1,334,787	998,460
June	1,590,361	1,165,898	
July	1,127,650	966,746	
August	1,460,208	1382362	
TOTALS	13,322,542	13,046,370	9,700,205

SPRINGFIELD PLATTEVIEW COMMUNITY SCHOOLS

Treasurer's Report

For the month ended May 31, 2013

<u>General Fund Now Account</u>			
Bank Balance: Beginning of Reporting Period			\$ 400,792.41
Deposits:			
Springfield State Bank - Interest	\$ 35.74		
Transfer from Employee Benefit	\$ 0.00		
Transfers from Investment Account	\$ 997,892.25		
Transfer from Bond Fund	\$ 0.00		
Transfers from Lunch Fund Investment	\$ 44,662.01		
Transfers from Building Fund Investment	\$ 32,736.89		
			\$ 1,075,326.89
			\$ 1,476,119.30
Disbursements			
			\$ 1,063,714.88
Bank Balance: End of Reporting Period			\$ 412,404.42
Outstanding Checks: End of Reporting Period			\$ 164,568.51
NOW Account Balance: End of Reporting Period			\$ 247,835.91
<u>General Fund Investment Account</u>			
Available Balance: Beginning of Reporting Period			\$ 4,615,835.43
Deposits:			
Springfield State Bank - Interest	\$ 389.42		
Sarpy County Treasurer - Local Taxes	\$ 96,505.77		
Learning Community Common Taxes	\$ 492,699.69		
Sarpy County- MVT	\$ 85,455.62		
Liquor License	\$ 500.00		
State Aid	\$ 406,538.10		
SPED School Age Reimb.	\$ 115,543.00		
IDEA/Federal Grants/ Title	\$ 0.00		
Rentals	\$ 780.00		
Medicaid Payment	\$ 0.00		
Pre-School Tuition	\$ 600.00		
Refunds and Reimbursements	\$ 893.66		
iPad Fees	\$ 2,465.00		
Postage	\$ 0.00		
			\$ 1,202,370.26
			\$ 5,818,205.69
Disbursements			
Transfers to General Fund NOW	\$ 997,892.25		
Administrative Revolving	\$ 517.01		
Returned checks/ fees	\$ 0.00		
Bank and other Service Charges	\$ 50.50		
			\$ 998,459.76
Investment Account Balance: End of Reporting Period			\$ 4,819,745.93
<u>General Fund Administrative Revolving Account</u>			
Available Balance: Beginning of Reporting Period			\$ 5,296.02

Deposits:		
Transfers From General Fund Investment Acc't	\$	517.01
Transfers From Lunch Fund Investment Acc't	\$	0.00
Transfers From Building Fund	\$	10,109.33
		\$ 10,626.34
		\$ 15,922.36
Disbursements		
Bank Balance: End of Reporting Period	\$	11,637.46
Outstanding Checks: End of Reporting Period	\$	4,284.90
Outstanding Deposits: End of Reporting Period	\$	950.31
	\$	4,012.22
Admin. Revolving Account Balance: End of Reporting Period	\$	7,346.81
General Fund Administrative Revolving Account	\$	7,346.81
General Fund NOW Account	\$	247,835.91
General Fund Investment Account	\$	4,819,745.93
TOTAL GENERAL FUND BALANCE	\$	5,074,928.65
Employee Benefit Fund		
Available Balance: Beginning of Reporting Period	\$	478,891.94
Deposits:		
Springfield State Bank - Interest	\$	40.67
Transfers From General Fund Investment Acc't	\$	0.00
PayFlex startup money	\$	0.00
Bank Balance: End of Reporting Period	\$	478,932.61
Certificate of Deposit		
Available Balance: End of Reporting Period	\$	478,932.61
Disbursements	\$	0.00
TOTAL EMPLOYEE BENEFIT BALANCE	\$	478,932.61
Special Building Fund Investment Account		
Available Balance: Beginning of Reporting Period	\$	1,185,065.51
Deposits:		
Springfield State Bank - Interest	\$	100.32
Sarpy County Treasurer - Local Taxes	\$	0.00
	\$	100.32
	\$	1,185,165.83
Disbursements		
Available Balance: End of Reporting Period	\$	10,109.33
	\$	1,175,056.50
TOTAL SPECIAL BUILDING FUND BALANCE	\$	1,175,056.50
School Lunch Investment Account		
Available Balance: Beginning of Reporting Period	\$	112,494.23
Deposits:		
Springfield State Bank - Interest	\$	9.17
Hot Lunches	\$	20,343.03

State/Federal Aid	\$	14,629.22	
Miscellaneous	\$	1,475.60	\$ 36,457.02
			\$ 148,951.25
Disbursements			
Coin Short/ Returned Checks	\$	0.00	
Transfers to NOW	\$	44,742.01	\$ 44,742.01
Available Balance: End of Reporting Period			\$ 104,209.24
TOTAL SCHOOL LUNCH FUND BALANCE			\$ 104,209.24
Bond Fund Investment Account			
Available Balance: Beginning of Reporting Period			\$ 322,893.16
Deposits:			
Springfield State Bank - Interest	\$	27.89	
Sarpy County Treasurer - Local Taxes	\$	33,033.63	\$ 33,061.52
			\$ 355,954.68
Disbursements			\$ 32,736.89
Transfer to NOW			\$ 0.00
Available Balance: End of Reporting Period			\$ 323,217.79
TOTAL BOND FUND BALANCE			\$ 323,217.79
Depreciation Fund Account			
Available Balance: Beginning of Reporting Period			\$ 210,658.84
Deposits:			
Springfield State Bank - Interest	\$	17.89	
Transfers from General Fund	\$	0.00	\$ 17.89
			\$ 210,676.73
Disbursements			
Transfer to NOW			\$ 0.00
Available Balance: End of Reporting Period			\$ 210,676.73
TOTAL DEPRECIATION FUND BALANCE			\$ 210,676.73

Bank Statement Reconciliation

Description

Adjustment Date

Adjustment Amount

Platteview High School

05/01/2013 through 05/31/2013

Checking

Bank Statement Reconciliation Summary

1. Statement Balance	\$ 146,079.21
2. - Outstanding checks	\$ 9,387.86
3. + Outstanding Deposits	\$ 0.00
4. + Outstanding Adjustments	\$ 0.00
5. Total	\$ 136,691.35
6. + Investments	\$ 0.00
7. Book Balance	\$ 136,691.35

Current Cash Balance

Sorted by Site ID, Group ID, Activity ID.
From 05/01/2013 to 05/31/2013.

Site ID	Site Name	Beginning Cash	Receipts	Disbursements	Adjustments	Cash Balance
Group ID	Group Name					
Activity ID	Activity Name					
SpringPI Platteview High School						
A Athletics						
100	Athletics	40,994.77	712.90	1,160.97	-9,875.42	30,671.28
105	Boys Basketball Contest	315.07	0.00	0.00	-315.07	0.00
106	Boys Basketball Equip/Supplies	0.00	0.00	0.00	0.00	0.00
110	Boys Golf Contest	-1,531.65	0.00	-100.00	1,431.65	0.00
111	Boys Golf Equip/Supplies	-401.00	0.00	0.00	401.00	0.00
115	Boys Soccer Contest	-958.00	0.00	0.00	958.00	0.00
116	Boys Soccer Equip/Supplies	-1,535.95	0.00	6.50	1,542.45	0.00
120	Cross Country Contest	0.00	0.00	0.00	0.00	0.00
121	Cross Country Equip/Supplies	0.00	20.00	0.00	-20.00	0.00
125	Football Contest	0.00	0.00	0.00	0.00	0.00
126	Football Equip/Supplies	0.00	0.00	0.00	0.00	0.00
130	Girls Basketball Contest	480.98	0.00	0.00	-480.98	0.00
131	Girls Basketball Equip/Supplies	45.00	0.00	0.00	-45.00	0.00
135	Girls Golf Contest	0.00	0.00	0.00	0.00	0.00
136	Girls Golf Equip/Supplies	0.00	0.00	0.00	0.00	0.00
140	Girls Soccer Contest	-1,273.00	0.00	0.00	1,273.00	0.00
141	Girls Soccer Equip/Supplies	-1,062.50	0.00	0.00	1,062.50	0.00
145	Track Contest	-3,590.06	300.00	250.00	3,540.06	0.00
146	Track Equip/Supplies	-1,261.07	0.00	0.00	1,261.07	0.00
150	Volleyball Contest	0.00	0.00	0.00	0.00	0.00
151	Volleyball Equip/Supplies	0.00	0.00	0.00	0.00	0.00
155	Wrestling Contest	0.00	0.00	0.00	0.00	0.00
156	Wrestling Equip/Supplies	0.00	0.00	34.72	34.72	0.00
A Totals:		30,222.59	1,032.90	1,352.19	767.98	30,671.28
B Clubs & Organizations						
200	Boys Basketball Club	880.87	0.00	523.90	0.00	356.97
205	Boys Golf Club	54.52	0.00	54.52	0.00	0.00
210	Boys Soccer Club	1,678.37	110.90	25.99	-767.98	995.30
220	Cheer	3,963.95	14,149.35	8,329.50	88.60	9,872.40
240	Dance Team	1,603.37	2,320.00	199.86	133.40	3,856.91
245	Drama Club	2,825.46	260.00	210.68	0.00	2,874.78
250	FBLA	2,433.27	601.68	1,792.00	0.00	1,242.95
260	Football Club	5,830.45	0.00	0.00	0.00	5,830.45
270	Girls Basketball Club	634.51	2,045.00	0.00	828.40	3,507.91
280	Girls Golf Club	5.73	0.00	0.00	0.00	5.73
290	Girls Letter Club	2,935.93	0.00	0.00	0.00	2,935.93
300	Girls Soccer Club	2,828.13	0.00	1,550.55	0.00	1,277.58
330	National Honor Society	783.33	0.00	175.25	0.00	608.08
340	P Club	1,796.47	0.00	0.00	149.01	1,945.48
350	Skills USA	113.43	70.00	0.00	0.00	183.43
360	Spanish Club	599.02	0.00	20.29	0.00	578.73
370	Spirit Club	617.06	0.00	0.00	0.00	617.06
380	Student Council	974.51	0.00	177.50	0.00	797.01

Current Cash Balance

Sorted by Site ID, Group ID, Activity ID.
From 05/01/2013 to 05/31/2013.

Site ID Group ID	Site Name Group Name Activity ID	Activity Name	Beginning Cash	Receipts	Disbursements	Adjustments	Cash Balance
	390	Thespian	0.00	0.00	0.00	0.00	0.00
	400	Track Club	1,453.14	539.50	1,451.96	0.00	540.68
	410	Volleyball Club	1,906.08	0.00	780.00	0.00	1,126.08
	420	Wrestling Club	1,613.56	0.00	0.00	0.00	1,613.56
	B	Totals:	35,531.16	20,096.43	15,292.00	431.43	40,767.02
C	Classes						
	500	Art	2,740.00	20.00	15.42	0.00	2,744.58
	505	Band	4,507.50	6,438.13	2,630.53	0.00	8,315.10
	510	Choir	2,251.09	1,433.77	948.81	0.00	2,736.05
	515	Class of 2016	223.57	0.00	0.00	0.00	223.57
	520	Class of 2013	1,292.96	0.00	232.34	0.00	1,060.62
	530	Class of 2014	2,466.57	0.00	192.15	100.00	2,374.42
	540	Class of 2015	1,326.92	0.00	0.00	0.00	1,326.92
	550	Construction Tech	52.82	704.93	604.93	0.00	152.82
	570	Family Consumer Science	1,154.74	0.00	0.00	0.00	1,154.74
	580	Industry Tech	1,884.50	90.00	256.67	0.00	1,717.83
	590	Yearbook	4,020.82	1,485.00	0.00	283.10	5,788.92
	C	Totals:	21,921.49	10,171.83	4,880.85	383.10	27,595.57
D	Activities						
	600	Activities	43.99	0.00	0.00	0.00	43.99
	650	Mock Trial	46.57	0.00	0.00	0.00	46.57
	655	Musical	-157.35	157.35	0.00	0.00	0.00
	660	Play Production	0.00	0.00	0.00	0.00	0.00
	670	Speech	0.00	0.00	0.00	0.00	0.00
	D	Totals:	-66.79	157.35	0.00	0.00	90.56
E	Miscellaneous						
	700	Alumni	2,780.53	0.00	0.00	0.00	2,780.53
	705	Capital Improvement	10,000.00	0.00	0.00	0.00	10,000.00
	710	Concessions	16,633.72	2,287.92	1,208.99	-1,082.51	16,630.14
	720	Faculty Courtesy Fund	879.98	0.00	42.80	0.00	837.18
	730	Fine Arts	1,523.95	0.00	0.00	0.00	1,523.95
	740	Guidance	583.80	695.00	912.00	0.00	366.80
	750	Library	696.06	14.50	0.00	0.00	710.56
	760	Principal	1,265.76	1,152.47	2,217.74	0.00	200.49
	770	Textbook Fines	858.57	342.83	0.00	0.00	1,201.40
	780	College Access Grant	3,310.56	0.00	1,144.69	-500.00	1,665.87
	E	Totals:	38,532.93	4,492.72	5,526.22	-1,582.51	35,916.92
F	Dual Credits						
	805	Math	250.00	1,400.00	0.00	0.00	1,650.00
	F	Totals:	250.00	1,400.00	0.00	0.00	1,650.00

Current Cash Balance

Sorted by Site ID, Group ID, Activity ID.
From 05/01/2013 to 05/31/2013.

Site ID Group ID	Site Name Group Name	Activity ID	Activity Name	Beginning Cash	Receipts	Disbursements	Adjustments	Cash Balance
N	Non-Active Accounts							
	90001		AV - Graduation	0.00	0.00	0.00	0.00	0.00
	90002		Class of 2010	0.00	0.00	0.00	0.00	0.00
	90003		Class of 2011	0.00	0.00	0.00	0.00	0.00
	90004		Class of 2012	0.00	0.00	0.00	0.00	0.00
	90005		General Fund	0.00	0.00	0.00	0.00	0.00
	90006		German	0.00	0.00	0.00	0.00	0.00
	90007		Government	38.20	0.00	38.20	0.00	0.00
	90008		Lit Mag	0.00	0.00	0.00	0.00	0.00
	N	Totals:		38.20	0.00	38.20	0.00	0.00
	SpringPI	Totals:		126,429.58	37,351.23	27,089.46	0.00	136,691.35
	Report Totals:			126,429.58	37,351.23	27,089.46	0.00	136,691.35

SPRINGFIELD STATE BANK
 600 MAIN ST
 SPRINGFIELD, NE 68059
 Tel: (402)253-2222

SPRINGFIELD PLATTEVIEW COMM
 PLATTEVIEW ACTIVITY FUND
 14801 S 108TH STREET
 SPRINGFIELD NE 68059

Statement Date: 05/31/2013 Enclosures: (112)

Account No.: 104812 Page: 1

NOW CHECKING ACCOUNT SUMMARY

Category	Number	Type :	REG	Status :	Active	Amount
Balance Forward From 04/30/13						133,477.71
Deposits	5					37,339.58+
Debits	107					24,660.73
Automatic Withdrawals	1					89.00
Interest Added This Statement						11.65+
Ending Balance On 05/31/13						146,079.21
Annual Percentage Yield Earned					0.10%	
Interest Paid This Year					61.58	
Interest Paid Last Year					161.32	
Average Balance (Collected)					137,187.57+	

STATEMENT PERIOD ACTIVITY

Date	Check/Description	Amount	Check/Description	Amount	Balance
05/01/13	41352	30.00	41270	75.00	133,372.71
05/01/13	41360	140.00	41414	160.00	133,072.71
05/01/13	41418	171.00	41246	246.00	132,655.71
05/02/13	41416	10.80	41415	47.40	132,597.51
05/02/13	41354	62.00	41386	100.00	132,435.51
05/02/13	41409	100.00	41423	200.00	132,135.51
05/03/13	31434	34.55	41430	56.00	132,044.96
05/03/13	41425	62.00	41413	160.00	131,822.96
05/03/13	41433	216.33	41419	401.00	131,205.63
05/03/13	41434	678.25			130,527.38
05/06/13	41420	56.75			130,470.63
05/07/13	41427	10.00	41422	27.88	130,432.75
05/07/13	41373	32.09	41300	62.00	130,338.66
05/07/13	41353	62.00	41407	75.00	130,201.66
05/07/13	41426	117.00	41389	300.00	129,784.66
05/08/13	41400	50.00	41432	110.00	129,624.66
05/08/13	41402	150.00	31435	235.67	129,238.99
05/09/13	31436	94.60			129,144.39
05/10/13	41305	80.00	31437	385.52	128,678.87
05/13/13	41446	50.00	41442	140.00	128,488.87
05/13/13	41436	1,334.50			127,154.37
05/14/13	DEPOSIT	2,497.75+	DEPOSIT	17,029.89+	146,682.01
05/14/13	41121	38.25	41453	49.16	146,594.60
05/14/13	41440	56.00	41323	62.00	146,476.60
05/14/13	41219	64.00	41443	65.05	146,347.55

Continued

01/158/1

Statement of Activity Fund
Springfield Elementary
For the Period of May 1, 2013 to May 31, 2013

Activity	Balance Last Report	Receipts	Expenditures	Transactions In-Out	Balance On Hand
Library	\$ 2,291.76	\$ -	\$ 496.59	\$ -	\$ 1,795.17
Pop	\$ 308.88	\$ -	\$ -	\$ -	\$ 308.88
General	\$ 3,840.70	\$ 200.48	\$ 1,694.93	\$ -	\$ 2,346.25
Student Council	\$ 1,558.93	\$ 1,194.70	\$ 186.99	\$ -	\$ 2,566.64
Technology Funds	\$ 565.79	\$ -	\$ -	\$ -	\$ 565.79
Total	\$ 8,566.06	\$ 1,395.18	\$ 2,378.51	\$ -	\$ 7,582.73

Bank Balance	\$ 9,858.31
Deposits	\$ 1,395.18
Checks Paid	\$ 3,670.76
Balance	\$ 7,582.73
Outstanding Cks.	\$ -
Cash on Hand	\$ -
Balance	\$ 7,582.73

Wes Reed

Wes Reed, Principal
June 4, 2013

STATEMENT OF ACTIVITY FUND				
WESTMONT ELEMENTARY				
FOR THE PERIOD:		May-13		
Activity	Balance Last Report	Receipts	Expenditures	Balance On Hand
Library Fund	\$3,369.55	\$44.00	\$0.00	\$3,413.55
General Fund	\$2,094.48	\$2,275.57	\$1,186.83	\$3,183.22
Pop	\$1,271.05	\$185.79	\$0.00	\$1,456.84
Student Council	\$1,033.13	\$40.00	\$34.86	\$1,038.27
Totals	\$7,768.21	\$2,545.36	\$1,221.69	\$9,091.88
Previous Bank Balance	\$8,838.49			
Deposits Made This Month	\$2,545.36			
Checks Paid This Month	\$2,172.53			
New Bank Balance	\$9,211.32			
Minus Outstanding Checks	\$119.44			
Plus Outstanding Deposits	\$0.00			
Final Account Balance	\$9,091.88			

Melissa Hasty
 MELISSA HASTY
 Principal

PEEC/WEEC MAY 2013

PEEC-WEEC
6/5/2013

Reconciliation Summary

BANK STATEMENT -- CLEARED TRANSACTIONS:

Previous Balance:			2,081.05
Checks and Payments	4	Items	-470.20
Deposits and Other Credits	3	Items	180.00
Service Charge	0	Items	0.00
Interest Earned	0	Items	0.00
Ending Balance of Bank Statement:			1,790.85

YOUR RECORDS -- UNCLEARED TRANSACTIONS:

Cleared Balance:			1,790.85
Checks and Payments	1	Item	-20.58
Deposits and Other Credits	0	Items	0.00
Register Balance as of 5/31/2013:			1,770.27
Checks and Payments	0	Items	0.00
Deposits and Other Credits	0	Items	0.00
Register Ending Balance:			1,770.27

PEEC/WEEC MAY 2013

PEEC-WEEC
6/5/2013

Uncleared Transaction Detail up to 5/31/2013

Date	Num	Payee	Memo	Category	Clr	Amount
Uncleared Checks and Payments						
5/20/2013	628	Sandy Lee		Supplies		-20.58
Total Uncleared Checks and Payments				1 Item		-20.58
Uncleared Deposits and Other Credits						
Total Uncleared Deposits and Other Credits				0 Items		0.00
Total Uncleared Transactions				1 Item		-20.58

BILLS BY FUND FOR PAYMENT JUNE 10,2013			
GENERAL FUND			
Payee	Account Code	Reason	Amount
Educational Service #3	1-01-1100-318	DOMAIN 3 YEARS	\$ 113.97
State of NE-Office of CIO	1-01-1100-318	ON-LINE FEE	\$ 222.15
AMAZON	1-01-1100-410	SUPPLIES	\$ 722.12
Kids On The Move Inc	1-01-1210-318	SPED SERVICE	\$ 1,578.25
National Business Institute	1-01-1210-630	Omaha,NE April 10,2013	\$ 339.00
Dill, Shellee L	1-01-1210-670	REIMBR. MILEAGE	\$ 122.04
Educational Service Unit #3 (SPED)	1-01-1240-318	SPED SERVICE	\$ 2,447.00
Belsky, Anita C	1-01-1240-410	REIMBR. MILEAGE & CONF. EXPEN	\$ 75.00
YAI, Conference Registration	1-01-1240-630	New York City, May 6-9, Anita Belsky	\$ 625.00
American Express	1-01-1240-670	CREDIT CARD PAYMENT	\$ 1,039.80
Belsky, Anita C	1-01-1240-670	REIMBR. MILEAGE & CONF. EXPEN	\$ 1,035.45
Educational Service Unit #3 (ADMIN)	1-01-2130-120	INTERLOCAL SUB	\$ 345.00
Educational Service Unit #3 (ADMIN)	1-01-2130-210	INTERLOCAL SUB	\$ 26.39
Educational Service Unit #3 (ADMIN)	1-01-2130-290	INTERLOCAL SUB	\$ 1.79
Diversified Health Care Inc.	1-01-2130-318	RN SUB	\$ 387.50
AMAZON	1-01-2210-410	SUPPLIES	\$ 137.78
HyVee Food & Drug Store	1-01-2210-410	SUPPLIES	\$ 20.97
Lynam, James E	1-01-2210-410	REIMBR. SUPPLIES	\$ 21.39
Engaging Technologies LLC	1-01-2210-460	MimioMobile Classroom License-dowr	\$ 199.00
Kirwan, Holli S	1-01-2210-670	REIMBR. MILEAGE	\$ 107.35
McCracken, Michelle L	1-01-2210-670	REIMBR. MILEAGE	\$ 167.81
McCracken, Michelle L	1-01-2210-670	REIMBR. SUPPLIES	\$ 23.64
American Express	1-01-2210-690	CREDIT CARD PAYMENT	\$ 52.47
NE Assoc Of School Boards	1-01-2310-630	LAW SEMINAR-K.FISHER	\$ 140.00
NE Assoc Of School Boards	1-01-2310-630	LAW SEMINAR-R.ICENOGL	\$ 140.00
American Express	1-01-2310-690	CREDIT CARD PAYMENT	\$ 102.94
Anderson Awards & Engraving	1-01-2310-690	SUPPLIES	\$ 125.00
Borsheim's	1-01-2310-690	REC. DINNER AWARDS	\$ 389.00
Eddie's Catering	1-01-2310-690	2013 REC. DINNER	\$ 2,360.25
Harding & Shultz, P.C.,L.L.O.	1-01-2320-317	LEGAL SERVICE	\$ 1,678.35
American Express	1-01-2320-410	CREDIT CARD PAYMENT	\$ 71.76
American Express	1-01-2320-690	CREDIT CARD PAYMENT	\$ 46.00
HyVee Food & Drug Store	1-01-2320-690	SUPPLIES	\$ 72.93
Lukas Partners, Inc.	1-01-2330-318	PR SERVICE	\$ 595.45
Morningfire, Inc.	1-01-2330-350	APR 13 OUTDOOR ADVERTISING	\$ 735.00
Mailfinance	1-01-2510-318	POSTAGE LEASE	\$ 210.00
Midwest Office Automations	1-01-2510-318	COPIER LEASE	\$ 2,765.99
Stamp Fulfillment Services	1-01-2510-341	FOREVER ENVELOPES	\$ 1,056.70
Stamp Fulfillment Services	1-01-2510-341	FOREVER STAMPS @ SP	\$ 268.30
Totalfunds by Hasier	1-01-2510-341	POSTAGE	\$ 500.00
CenturyLink	1-01-2510-342	PHONE @ SP	\$ 386.31
CenturyLink	1-01-2510-342	PHONE SERVICE @ CO	\$ 222.25
MCI	1-01-2510-342	LONG DISTANCE	\$ 126.12
Verizon Wireless	1-01-2510-342	CELL PHONES	\$ 160.47
Culligan Us Filter	1-01-2510-410	SUPPLIES	\$ 43.00
Omaha World Herald-Circulation	1-01-2510-410	WEEKDAY SUBSCRIPTION	\$ 91.00
Suburban Newspapers, Inc	1-01-2510-410	SUBSCRIPTION RENEWAL	\$ 47.00
Harris School Solutions	1-01-2510-460	ANNUAL MAINT. APTA	\$ 5,622.75
Harris School Solutions	1-01-2510-530	ANNUAL MAINT. APTA	\$ 3,748.50
American Express	1-01-2520-336	CREDIT CARD PAYMENT	\$ 775.98
Buskirk, Richard	1-01-2520-337	REPAIR	\$ 10.00
Great Plains Pest Services In	1-01-2620-318	PEST CONTROL	\$ 150.00
Institute For Envir.Asses.Inc	1-01-2620-318	ASBESTO'S SERVICE	\$ 1,877.30
Johnson, Charles E	1-01-2620-318	WATER OPERATOR	\$ 450.00
Kulm, Travis	1-01-2620-318	WEED SPRAY @ SP	\$ 475.00
Rosser Lawn Care, Inc.	1-01-2620-318	MOWING @ LP	\$ 500.00
Rosser Lawn Care, Inc.	1-01-2620-318	MOWING @ PHS	\$ 2,325.00
Rosser Lawn Care, Inc.	1-01-2620-318	MOWING @ SP	\$ 630.00

BILLS BY FUND FOR PAYMENT JUNE 10,2013			
Rosser Lawn Care, Inc.	1-01-2620-318	MOWING @ WM	\$ 840.00
Apollo Heating & Air Conditioning	1-01-2620-319	AIR REPAIR @ PHS COMPUTER LA	\$ 224.00
Grainger	1-01-2620-319	SUPPLIES	\$ 418.14
Millard Sprinkler	1-01-2620-319	REPAIR PHS FB FIELD	\$ 1,552.80
Rainbow Glass And Supply	1-01-2620-319	REPAIR WINDOW @ SP PORTABLE	\$ 214.66
Egan Supply Company	1-01-2620-410	SUPPLIES	\$ 104.80
Grainger	1-01-2620-410	SUPPLIES	\$ 204.84
Home Depot/GEFC	1-01-2620-410	SUPPLIES	\$ 47.39
Mark's Plumbing Parts	1-01-2620-410	SUPPLIES	\$ 66.29
McKnight, Mary J	1-01-2620-410	REIMBR. SUPPLIES	\$ 6.40
Papillion Hardware	1-01-2620-410	SUPPLIES	\$ 66.14
ZIMCO	1-01-2620-410	SUPPLIES	\$ 79.00
Eastern Nebraska 4-H Center	1-02-2190-630	2013 OUTDOOR ED	\$ 3,211.82
Metropolitan Utilities Dist	1-02-2610-321	LEVEL PAYMENT	\$ 200.00
Omaha Public Power District	1-02-2610-322	LEVEL PAYMENT	\$ 389.47
First Student	1-02-2750-318	ACTIVITY TRANSPORTATION	\$ 9,011.81
First Student	1-02-2750-318	FACILITY RENT	\$ (1,000.00)
First Student	1-02-2750-318	FUEL ESCALATOR	\$ 6,218.40
First Student	1-02-2750-318	REGULAR TRANSPORTATION	\$ 34,982.99
First Student	1-02-2750-318	ROUTE EXTENSIONS	\$ 2,457.78
First Student	1-02-2760-318	SPED ROUTES NON-DISTRICT DAY	\$ 440.78
First Student	1-02-2760-318	SPED TRANSPORTATION	\$ 20,937.05
Happy, Yellow and Checker Cab Cor	1-02-2760-318	SPED TRANSPORTATION	\$ 768.00
First Student	1-02-2790-318	LC HOURST	\$ 2,498.88
Metropolitan Utilities Dist	1-03-2610-321	LEVEL PAYMENT	\$ 160.00
Omaha Public Power District	1-03-2610-322	LEVEL PAYMENT	\$ 370.76
Educational Service Unit #3 (ADMIN	1-10-1100-120	INTERLOCAL SUB	\$ 5,462.50
Educational Service Unit #3 (ADMIN	1-10-1100-210	INTERLOCAL SUB	\$ 417.93
Educational Service Unit #3 (ADMIN	1-10-1100-290	INTERLOCAL SUB	\$ 28.54
Educational Service #3	1-10-1100-410	2013 COOP PAPER BUY	\$ 5,907.13
Midwest Office Automations	1-10-1100-410	SUPPLIES	\$ 137.00
Bellevue Public Schools	1-10-1200-318	SPED SERVICE	\$ 4,483.50
Educational Service Unit #3 (SPED)	1-10-1200-318	SPED SERVICE	\$ 991.40
Barrios, Melissa M	1-10-1200-670	REIMBR. MILEAGE	\$ 76.30
Douglas County School Dist 0001	1-10-1230-362	SPED SERVICE	\$ 22,801.00
Educational Service Unit #3 (SPED)	1-10-1230-362	SPED SERVICE	\$ 6,592.80
Emily R Wadhams, HPMT,MT-BC	1-10-1230-362	SPED SERVICE	\$ 440.00
Educational Service Unit #3 (ADMIN	1-10-1290-120	INTERLOCAL SUB	\$ 345.00
Educational Service Unit #3 (ADMIN	1-10-1290-210	INTERLOCAL SUB	\$ 26.39
Educational Service Unit #3 (ADMIN	1-10-1290-290	INTERLOCAL SUB	\$ 1.79
Kids On The Move Inc	1-10-1290-318	SPED SERVICE	\$ 649.00
Snyder Charleson Therapy Services	1-10-1290-318	SPED SERVICE	\$ 3,341.25
HyVee Food & Drug Store	1-10-1290-410	SUPPLIES	\$ 250.35
Lee, Sandra R	1-10-1290-410	REIMBR. SUPPLIES	\$ 263.06
Omaha Henry Doorly Zoo	1-10-1290-410	PRE-SCHOOL FIELD TRIP	\$ 323.00
Springfield Platteview Community S	1-10-1290-410	PRE-SCHOOL SUPPLIES	\$ 500.20
Edwards, Elizabeth A	1-10-1290-670	REIMBR. MILEAGE	\$ 96.62
Miller, Vanessa A	1-10-1310-410	REIMBR. SUPPLIES	\$ 64.57
Educational Service #3	1-10-1310-630	WORKSHOP-V.MILLER	\$ 100.00
Culligan Us Filter	1-11-1100-318	SUPPLIES	\$ 25.00
Curriculum Associates	1-11-1100-410	SUPPLIES	\$ 419.58
Learning A-Z	1-11-1100-410	Reading A-Z	\$ 239.85
Namify	1-11-1100-410	SUPPLIES	\$ 40.21
AMAZON	1-11-1100-560	SUPPLIES	\$ 257.95
Engaging Technologies LLC	1-11-1100-560	MimioMobile Classroom License-dowr	\$ 398.00
Janak, Marla	1-11-1100-670	REIMBR. MILEAGE	\$ 52.55
Educational Service Unit #3 (ADMIN	1-11-1220-120	INTERLOCAL SUB	\$ 172.50
Educational Service Unit #3 (ADMIN	1-11-1220-210	INTERLOCAL SUB	\$ 13.20
Educational Service Unit #3 (ADMIN	1-11-1220-290	INTERLOCAL SUB	\$ 0.90
Ralston Public Schools	1-11-1220-318	SPED SERVICE	\$ 526.06
National Business Institute	1-11-1220-630	Anna Carreon	\$ 339.00
AccuPrint Laser Services Inc	1-11-2220-318	PRINTER REPAIR	\$ 374.95

BILLS BY FUND FOR PAYMENT JUNE 10,2013			
Follett Library Resources	1-11-2220-430	LIBRARY BOOKS	\$ 824.25
Gumdrop Books	1-11-2220-430	LIBRARY BOOKS	\$ 1,085.55
Black Hills Energy	1-11-2610-321	GAS SERVICE @ LP	\$ 47.15
Metropolitan Utilities Dist	1-11-2610-321	LEVEL PAYMENT	\$ 390.00
Omaha Public Power District	1-11-2610-322	LEVEL PAYMENT	\$ 3,558.69
City Of Springfield	1-11-2610-323	WATER & SEWER @ SP	\$ 233.30
Hillyard/Sioux Falls	1-11-2610-410	SUPPLIES	\$ 337.47
Janak, Marla	1-12-1100-670	REIMBR. MILEAGE	\$ 116.95
AccuPrint Laser Services Inc	1-12-1100-690	TONER	\$ 800.75
Educational Service Unit #3 (ADMIN	1-12-1220-120	INTERLOCAL SUB	\$ 1,265.00
Educational Service Unit #3 (ADMIN	1-12-1220-210	INTERLOCAL SUB	\$ 96.78
Educational Service Unit #3 (ADMIN	1-12-1220-290	INTERLOCAL SUB	\$ 6.58
Ralston Public Schools	1-12-1220-318	SPED SERVICE	\$ 416.27
American Express	1-12-1220-410	CREDIT CARD PAYMENT	\$ 119.00
Arnauskas, Kathy	1-12-2120-670	REIMBR. MILEAGE	\$ 91.02
Follett Library Resources	1-12-2220-430	LIBRARY BOOKS	\$ 584.73
Gumdrop Books	1-12-2220-430	LIBRARY BOOKS	\$ 1,085.55
Hasty, Melissa D	1-12-2410-670	REIMBR. MILEAGE	\$ 479.69
Engaging Technologies LLC	1-12-2410-690	MimioMobile Classroom License-down	\$ 398.00
Hasty, Melissa D	1-12-2410-690	REIMBR. MILEAGE	\$ 88.71
Hasty, Melissa D	1-12-2410-690	REIMBR. SUPPLIES	\$ 16.63
Omaha Public Power District	1-12-2610-322	LEVEL PAYMENT	\$ 4,251.29
Hillyard/Sioux Falls	1-12-2610-410	SUPPLIES	\$ 337.47
Educational Service Unit #3 (ADMIN	1-20-1100-120	INTERLOCAL SUB	\$ 9,200.00
Educational Service Unit #3 (ADMIN	1-20-1100-210	INTERLOCAL SUB	\$ 703.88
Educational Service Unit #3 (ADMIN	1-20-1100-290	INTERLOCAL SUB	\$ 47.68
Educational Service #3	1-20-1100-410	2013 COOP PAPER BUY	\$ 5,907.13
Midwest Office Automations	1-20-1100-410	SUPPLIES	\$ 260.00
Educational Service Unit #3 (SPED)	1-20-1230-362	SPED SERVICE	\$ 7,810.00
Heartland Foundation	1-20-1230-362	SPED SERVICE	\$ 5,425.00
Ollie Webb Center, Inc.	1-20-1230-362	SPED SERVICE	\$ 5,495.00
AMAZON	1-21-1100-410	SUPPLIES	\$ 648.78
CDWG	1-21-1100-410	PROJECTOR	\$ 775.99
Lego Education	1-21-1100-410	S/H	\$ 121.62
Scanlan, Aris	1-21-1100-410	REIMBR. SUPPLIES	\$ 63.06
Educational Service #3	1-21-1100-630	WORKSHOP-M.TILLER	\$ 50.00
Culligan Us Filter	1-21-1100-690	SUPPLIES	\$ 84.30
Educational Service Unit #3 (ADMIN	1-21-1220-120	INTERLOCAL SUB	\$ 230.00
Educational Service Unit #3 (ADMIN	1-21-1220-210	INTERLOCAL SUB	\$ 17.60
Educational Service Unit #3 (ADMIN	1-21-1220-290	INTERLOCAL SUB	\$ 1.20
AMAZON	1-21-1220-410	SUPPLIES	\$ 123.69
EverGreen Printing Supplies	1-21-2410-410	TONER	\$ 162.39
CDWG	1-21-2410-690	PRINTER @ PC	\$ 345.51
Hillyard/Sioux Falls	1-21-2610-410	SUPPLIES	\$ 337.47
Schmitt Music Center	1-22-1100-318	REPAIR	\$ 76.00
American Express	1-22-1100-410	CREDIT CARD PAYMENT	\$ 28.00
King, Matthew T	1-22-1100-410	REIMBR. SUPPLIES	\$ 39.96
Library Store Inc., The	1-22-1100-410	SUPPLIES	\$ 1,566.51
NE Music Educators Association	1-22-1100-410	SUPPLIES	\$ 146.00
Pepper Of Minneapolis	1-22-1100-410	SUPPLIES	\$ 419.99
Quill Corp	1-22-1100-410	SUPPLIES	\$ 576.25
Apple, Inc.	1-22-1100-460	Voulume Voucher \$100	\$ 200.00
Apple, Inc.	1-22-1100-460	Voulume Voucher \$1000.00	\$ 1,000.00
American Express	1-22-1100-630	CREDIT CARD PAYMENT	\$ 95.00
American Express	1-22-1100-670	CREDIT CARD PAYMENT	\$ 586.20
Educational Service Unit #3 (ADMIN	1-22-1220-120	INTERLOCAL SUB	\$ 690.00
Educational Service Unit #3 (ADMIN	1-22-1220-210	INTERLOCAL SUB	\$ 52.79
Educational Service Unit #3 (ADMIN	1-22-1220-290	INTERLOCAL SUB	\$ 3.59
Target	1-22-1220-410	SUPPLIES	\$ 179.32
Follett Library Resources	1-22-2220-430	LIBRARY BOOKS	\$ 17.68
Bizco, Inc.	1-22-2230-410	MITSUBISHI LAMP	\$ 300.00
Quill Corp	1-22-2410-410	SUPPLIES	\$ 128.44

BILLS BY FUND FOR PAYMENT JUNE 10,2013			
Phi Delta Kappa (IN)	1-22-2410-630	MEMBERSHIP-A.SIMPSON	\$ 95.00
Case, Jacki L	1-22-2410-670	REIMBR. MILEAGE	\$ 27.69
Mirras, Teri J	1-22-2410-670	REIMBR. MILEAGE	\$ 29.38
Metropolitan Utilities Dist	1-22-2610-321	LEVEL PAYMENT	\$ 1,720.00
Omaha Public Power District	1-22-2610-322	LEVEL PAYMENT	\$ 15,619.79
Hillyard/Sioux Falls	1-22-2610-410	SUPPLIES	\$ 717.08
			\$ 258,096.30
FOOD SERVICE			
Payee	Account Code	Reason	Amount
Peters, Louise A	2-23-6000-291	UNIFORM ALLOWANCE	\$ 45.00
Thompson Company (The)	2-23-6000-410	FOOD/SUPPLIES	\$ 323.03
Food Distribution Program	2-23-6000-470	FOOD	\$ 296.90
Roberts Dairy Company	2-23-6000-470	FOOD	\$ 1,972.71
Rotella's Italian Bakery, Inc.	2-23-6000-470	FOOD	\$ 309.17
Sam's Club	2-23-6000-470	FOOD/SUPPLIES	\$ 295.06
Sysco Lincoln	2-23-6000-470	FOOD/SUPPLIES	\$ 1,269.65
Thompson Company (The)	2-23-6000-470	FOOD/SUPPLIES	\$ 2,427.57
Brenda Brock	2-23-6000-690	REFUND LUNCH ACCOUNT	\$ 5.40
Kenn & Kathleen Schutte	2-23-6000-690	REFUND LUNCH ACCOUNT	\$ 16.80
Randall & Kathleen Stark	2-23-6000-690	REFUND LUNCH ACCOUNT	\$ 13.85
			\$ 6,975.14
BUILDING FUND			
Payee	Account Code	Reason	Amount
Alfred F Corbino	3-06-2515-000	SUPPLIES	\$ 360.69
Jensen Gardens, inc.	3-06-2515-000	MULCH @ PHS	\$ 170.00
Midwest Floor Covering, Inc.	3-06-2515-000	Carpet Office Areas	\$ 8,737.50
Pacheco, Joseph F. (Flooring)	3-06-2515-000	GYMNASIUM FLOORS @ PHS	\$ 5,800.00
			\$ 15,068.19
			\$ 280,139.63



Prepared For
BRETT RICHARDS
 SO SARPY SCHOOL 46

Account Number
 XXXX-XXXXX7-21006

Closing Date
 05/23/13

Page 3 of 4

Activity Continued

Card Number XXXX-XXXXX7-22020	Reference Code	Amount
04/23/13 AMAZON MKTPLACE PMTS AMZN.COM/BILL WA REF# J3E3MCRXL96 MERCHANDISE 04/23/13	- 01-2320-410	✓ 14.77
04/24/13 B & B PITSTOP SPRINGFIELD NE REF# 000029664 GAS STATION 04/23/13 PURCHASE ROC NUMBER 000029664	00002966400	86.05
04/25/13 B & B PITSTOP SPRINGFIELD NE REF# 000029785 GAS STATION 04/24/13 PURCHASE ROC NUMBER 000029785	00002978500	49.20
04/26/13 B & B PITSTOP SPRINGFIELD NE REF# 000029885 GAS STATION 04/25/13 PURCHASE ROC NUMBER 000029885	00002988500	64.04
04/26/13 AMAZON MKTPLACE PMTS AMZN.COM/BILL WA REF# D4UJ0GBEVLV MERCHANDISE 04/26/13	- 01-2320-410	✓ 17.95
04/27/13 RJ COOPER AND ASSOC LAGUNA NIGUEL CA REF# 00000162537 800-7526673 04/26/13	00000162537 - 12-1220-410	119.00
04/30/13 B & B PITSTOP SPRINGFIELD NE REF# 000030416 GAS STATION 04/29/13 PURCHASE ROC NUMBER 000030416	00003041600	35.02
05/02/13 B & B PITSTOP SPRINGFIELD NE REF# 000030678 GAS STATION 05/01/13 PURCHASE ROC NUMBER 000030678	00003067800	56.72
05/02/13 HY VEE 1535 54292980 OMAHA NE REF# 501001728 4023393047 05/01/13 GROCERY STORES, SUP ROC NUMBER 501001728	50100172800	46.00
05/04/13 HILTON HOTELS ADV DE NEW YORK NY FOL# 0005528984 LODGING 05/04/13 ARRIVAL DATE DEPARTURE DATE 05/03/13 05/04/13 00 ROC NUMBER 0005528984	00055289840	1,039.80
05/07/13 AHP*WOODSMITH MAGAZI 866-553-7514 IA REF# 009UN126132 866-553-7514 05/06/13	22-1100-410	28.00
05/08/13 B & B PITSTOP SPRINGFIELD NE REF# 000031297 GAS STATION 05/07/13 PURCHASE ROC NUMBER 000031297	00003129700	89.00
05/09/13 B & B PITSTOP SPRINGFIELD NE REF# 000031427 GAS STATION 05/08/13 PURCHASE ROC NUMBER 000031427	00003142700	85.35
05/11/13 B & B PITSTOP SPRINGFIELD NE REF# 000031713 GAS STATION 05/10/13 PURCHASE ROC NUMBER 000031713	00003171300	44.00
05/11/13 B & B PITSTOP SPRINGFIELD NE REF# 000031741 GAS STATION 05/10/13 PURCHASE ROC NUMBER 000031741	00003174100	61.85
05/11/13 B & B PITSTOP SPRINGFIELD NE REF# 000031742 GAS STATION 05/10/13 PURCHASE ROC NUMBER 000031742	00003174200	84.65
05/11/13 HY VEE 1514 54292980 PAPIILLION NE REF# 510001382 4025975790 05/10/13 GROCERY STORES, SUP ROC NUMBER 510001382	51000138200	✓ 102.90
05/18/13 B & B PITSTOP SPRINGFIELD NE REF# 000032754 GAS STATION 05/17/13 PURCHASE ROC NUMBER 000032754	00003275400	120.00

66059 000
 0 1 4 0
 R04A7A2C
 002 002 02111 R04A7A2C
 03905 R04A7A2C 02111
 (000(

Handwritten notes and corrections on the table:

- 04/23/13: - 01-2320-410
- 04/24/13: 00002966400
- 04/25/13: 00002978500
- 04/26/13: 00002988500
- 04/26/13: - 01-2320-410
- 04/27/13: 00000162537, - 12-1220-410
- 04/30/13: 00003041600
- 05/02/13: 00003067800
- 05/02/13: 50100172800
- 05/04/13: 00055289840
- 05/07/13: 22-1100-410
- 05/08/13: 00003129700
- 05/09/13: 00003142700
- 05/11/13: 00003171300
- 05/11/13: 00003174100
- 05/11/13: 00003174200
- 05/11/13: 51000138200
- 05/18/13: 00003275400

Additional handwritten notes:

- fuel (written next to 04/25/13, 04/30/13, 05/02/13, 05/11/13)
- fuel (written next to 05/18/13)
- 01-1240-670 (written next to 05/04/13)
- 1-01-2310-690 (written next to 05/11/13)

Activity Continued

				Reference Code	Amount \$
15/18/13	NOBBIES AT TWIN CREE BELLEVUE REF# 033835271	402-292-1700	NE 05/17/13	03383527100 <i>01-2210-690</i>	52.47
15/21/13	UNITED AIRLINES TKT# 01672501231236 PASSENGER TICKET HOPP/ANDREW UNITED AIRLINES FROM OMAHA NE TO O HARE FIELD IL TO WASHINGTON NAT'L D TO NEWARK NJ TO OMAHA NE	MANKATO AIRLINE/AIR C 05/20/13 UNITED AIRLINES MANKATO CARRIER CLASS UA G UA G UA T UA T	MN	05200900000 <i>22-1100-670</i>	293.10
15/21/13	UNITED AIRLINES TKT# 01672501231240 PASSENGER TICKET LODES/JULIE UNITED AIRLINES FROM OMAHA NE TO O HARE FIELD IL TO WASHINGTON NAT'L D TO NEWARK NJ TO OMAHA NE	MANKATO AIRLINE/AIR C 05/20/13 UNITED AIRLINES MANKATO CARRIER CLASS UA G UA G UA T UA T	MN	05200900000 <i>22-1100-670</i>	293.10
15/23/13	ACDA INTERNET REF# 38232	405-2328161 4052328161	OK 05/22/13	38232000000 <i>1-22-1100-630</i>	95.00
15/23/13	WORLDS OF FUN-CALL C REF# 44104168 GENERAL MERCHANDISE ROC NUMBER 44104168	KANSAS CITY 8164544545 05/22/13	MO	44104168000	1,704.52
Total for BRETT A. RICHARDS				New Charges/Other Debits Payments/Other Credits	4,582.67 0.00

01-2520-330
fuel total = 775.98



May 14, 2013

To
Mr. Brett Richards,
Ms. Anglia Simpson,

Please except my resignation from the Springfield Platteview Community Schools on
May 24 2013 at 4:00 PM.

Sincerely

Daniel R Craney


Signature

5/14/2013
Date

School Year (SY) 2013–14 Paid Lunch Equity (PLE) Tool Instructions

Note: Users may want to print the instructions and use them to guide users through the PLE Tool.

The PLE Tool (Tool) was created to help School Food Authorities (SFAs) calculate their paid lunch price increase requirement and non-Federal source contributions to meet the requirements in Section 205 of the Healthy, Hunger-Free Kids Act of 2010. If the pricing requirements calculated by the Tool are not met or are exceeded, the Tool will also calculate any amounts carried over into the next year. Note, the weighted average prices calculated in the Tool are the weighted average of all paid lunch prices charged in the SFA.

For more information on amounts carried over please refer to SP 39–2011

This version of the PLE tool is only applicable to SY 2013–2014. A new version of the tool will be issued for SY 2014–2015

The SY 2013–14 PLE Tool consists of 5 tabs:

Hyperlinks are also placed throughout the tool to navigate to the different tabs

- Tab 1: [Unrounded Requirement Finder](#)
- Tab 2: [SY 2013–14 Price Calculator](#)
- Tab 3: [SY 2013–14 Non-Federal Calculator](#)
- Tab 4: [SY 2013–14 Split Calculator](#)
- Tab 5: [SY 2013–14 REPORT](#)

* The last two tabs (SY 12–13 and SY 10–11 Price Calculators) are for reference only

Cells shaded this color designate data entry cells. The SFA must enter the applicable data in these cells for the tool to calculate the requirements

SFAs need the following data to calculate the Weighted Average Price for SY 2013–14:

- 1.) SY 2010–11 Weighted Average Price
- 2.) All paid lunch prices for October 2012
- 3.) Number of paid lunches served associated with each paid lunch price in October 2012

SFAs who have opted to contribute non-Federal sources for SY 2013–14 need:

- 1.) SY2010–11 Weighted Average Price
- 2.) SY2012–13 Weighted Average Price (if different from SY2010–11 Weighted Average Price)
- 2.) Total number of paid lunches served in SY 2011–12
- 3.) The total dollar amount of SY 2012–13 non-Federal contribution

SY 2013–14 WEIGHTED AVERAGE PAID LUNCH PRICE CALCULATION

These instructions are for SFAs increasing their weighted average prices to meet the SY 2013–14 paid lunch price requirement

Step 1

Tab 1: [Unrounded Requirement Finder](#)

1. Enter SY 2012–13 Weighted Average Price in the orange box.

If the SY 2012–13 weighted average price is not known then use the unrounded requirement finder.

This figure sets the pricing requirements throughout the Tool and helps determine any amounts carried forward. This figure was calculated through the SY 2012–13 PLE Tool.



After calculating the SY 2012–13 weighted average price requirement for paid lunches, click on the link labeled "Click here to go to SY 2013–14 Price Calculator"

Step 2

Tab 2: [SY 2013–14 Price Calculator](#)

The box at the top of this tab displays the SY2013–14 Weighted Average Price Requirement

To calculate the SY 2012–13 Weighted Average Price the SFA must:

1. Enter the paid lunch count for October 2012 associated with each paid meal price in the **Monthly # of Paid Lunches** column.
2. Enter each paid lunch price in the SFA (including all schools – elementary, middle, high, etc) for October 2012 in the **Paid Lunch Price** column.

Using the SY2012–13 weighted average price, the tool calculates any amounts necessary to meet the SY2013–14 weighted average price requirements and any amounts carried forward to SY2014–15.

Tab 5: [SY2013–2014 REPORT](#)

This report is generated for use in the SY2014–15 PLE tool and displays the SY2013–2014 requirements and any amount carried forward determined on the SY2013–2014 Price Calculator

Select the SY 2013–2014 method used to ensure sufficient funds are provided for PAID lunches

<OPTIONAL> Step 3

Pricing Estimation Calculator

Once an SFA has calculated the SY 2013–14 average paid lunch price requirement, they can use the PLE tool to determine how they want to distribute the price increase within the SFA to reach the new average paid lunch price. To do this an SFA must:

1. Enter the paid lunch count for October associated with each paid meal price in the **Monthly # of Paid Lunches** column.
2. Change individual paid lunch prices until the average paid lunch price reaches the new average paid lunch price requirement. This amount will appear in the **Weighted Average Price** box.

Many price combinations can be used to reach the new weighted average paid lunch price.

SFAs have the flexibility to raise individual prices as long as the weighted average price equals the new SY2013–2014 required level.

[Go to SY 2013–14 Price Calculator](#)

SY 2013–14 NON-FEDERAL SOURCE CONTRIBUTION CALCULATION

Step 1

Tab 1: [Unrounded Requirement Finder](#)

1. Enter SY 2012–13 Weighted Average Price in the orange box.

If the SY 2012–13 weighted average price is not known then use the unrounded requirement finder

This figure sets the pricing requirements throughout the Tool and helps determine any amounts carried forward. This figure was calculated through the SY 2012–13 PLE Tool.

After calculating the SY 2012–13 weighted average price requirement for paid lunches, go to SY 2013–14 Non-Federal Source Calculator tab



The box at the top of this tab displays the SY2013–14 Weighted Average Price Requirement

SY 2013–14 Non-Federal Source Contribution Requirement

1.) Enter the current weighted average paid lunch price. This price may be the same as the SY 2011–2012 weighted average price determined on the Unrounded Requirement Finder tab if the SFA did not raise the weighted average price in SY 2012–2013. To determine the most current average weighted price go to the SY2011–2012 Price Calculator tab.

2.) Enter the paid lunch count for the entire 2011–2012 School Year in the orange **Annual # of Paid Lunches** box in the Non-Federal Source Contribution Calculator for SY 2013–14.

The Tool will calculate the annual non-Federal source contribution for SY 2013–14 with and will apply the 10 cent cap if applicable

2.) Enter the actual amount of the SY 2012–13 non-Federal source contribution in the orange box labeled **Amount of Non-Federal Source Funds Contributed for SY 2011–12 AND SY 2012–13**.

Based on the actual amount contributed for SY 2012–13, the tool calculates the following:

- Remaining Annual Non-Federal Source Contribution for SY 2013–14
- Remaining Annual Non-Federal Source Contribution carried forward to SY 2014–15
- Remaining Credit carried forward to SY 2014–15

Tab 5: [SY2013–2014 REPORT](#)

This report is generated for use in the SY2014–15 PLE tool and displays the SY2013–2014 requirements and any amount carried forward determined on the SY2013–2014 Price Calculator

Select the SY 2013–2014 method used to ensure sufficient funds are provided for PAID lunches

SY 2013–14 Split Calculator

This tab is for those SFAs wishing to split their requirement by both raising prices and contributing a non-Federal source

Step 1

Tab 1: [Unrounded Requirement Finder](#)

1. Enter SY 2012–13 Weighted Average Price in the orange box.

If the SY 2012–13 weighted average price is not known then use the unrounded requirement finder.

After calculating the SY 2012–13 weighted average price requirement for paid lunches, click on the link labeled "Click here to go to SY 2013–14 Split Calculator"

Step 2

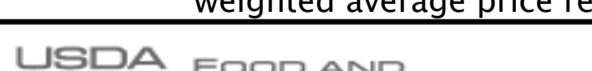
Tab 4: [SY 2013–14 Split Calculator](#)

The box at the top of this tab displays the SY2013–14 Weighted Average Price Requirement

To calculate the SY 2012–13 Weighted Average Price the SFA must:

1. Enter the paid lunch count for October 2012 associated with each paid meal price in the **Monthly # of Paid Lunches** column.
2. Enter each paid lunch price in the SFA (including all schools – elementary, middle, high, etc) for October 2012 in the **Paid Lunch Price** column.

Using the SY2012–13 weighted average price, the tool calculates any amounts necessary to meet the SY2013–14 weighted average price requirements and any amounts carried forward to SY2014–15.



Step 3

1. Enter the amount they plan to charge for paid lunches in SY 2013–14 in the "New Price Increase "

Step 4

To calculate the remaining amount of non-Federal sources contributions needed, the SFA must:

1.) Enter the paid lunch count for the entire 2011–2012 School Year in the orange **Annual # of Paid Lunches** box in the Non-Federal Source Contribution Calculator for SY 2013–14.

2.) Enter the actual amount of the SY 2012–13 non-Federal source contribution in the orange box labeled **Amount of Non-Federal Source Funds Contributed for SY 2011–12 AND SY 2012–13**.

Based on the actual amount contributed for SY 2012–13, the tool calculates the following:

- Remaining Annual Non-Federal Source Contribution for SY 2013–14
- Remaining Annual Non-Federal Source Contribution carried forward to SY 2014–15
- Remaining Credit carried forward to SY 2014–15

SFAs may use tabs 6 and 7 if they need to make calculations from previous years.

Step 1	
Enter the SY 2012-13 Unrounded Price Requirement in the box below	SY 2013-14 Weighted Average Price Requirement
This is can be found in Section 1: Box A of the SY2012-2013 REPORT from the SY 2012-13 tool or you may find it below (Price 2)	Requirement price to the nearest cent
\$ 2.45	\$ 2.57
Note: Above prices are based on adjusting SY 2012-2013 price requirement by the 2% rate increase plus the Consumer Price Index (2.93%)	

Complete if you do NOT know your SY2012-2013 Unrounded Price Requirement		
Annual Unrounded Requirement Finder		
Enter the SY 2010-11 Weighted Average Price below ** The weighted average price for SY 2010-11 is the weighted average of all paid lunch prices charged in the SFA		
SY 2010-11 Weighted Average Price	Unrounded Price Requirements	
	Price 1: SY 2011-2012 Requirement price to the nearest cent	Price 2: SY 2012-2013 Requirement price to the nearest cent
\$ 2.35	\$ 2.42	\$ 2.51
If you do not know your SY2010-2011 Weighted Average Price CLICK HERE		

Use the links below to go to the next step:

Click here to go to SY 2013-14 Price Calculator
Click here to go to SY 2013-14 Non-Federal Source Calculator
Click here to go to SY 2013-14 Split Calculator

[Go to Instructions](#)

SY 2013-14 Price Adjustment Calculator

[Go to Instructions](#)

SY 2013-14 Weighted Average Price Requirement	
Requirement price to the nearest cent	Optional price requirement ROUNDED DOWN to nearest 5 cent
\$ 2.57	\$ 2.55
Note: Above prices are based on adjusting SY 2012-2013 price requirement by the 2% rate increase plus the Consumer Price Index (2.93%)	

SY 2012-13 Weighted Average Price Calculator				
Enter the paid prices and number of paid lunches sold at each price for October 2012 .				
	Monthly # of Paid Lunches	Paid Lunch Price	Monthly Revenue	SY 2012-13 Weighted Average Price
1.	5,496	\$ 2.35	\$ 12,915.60	
2.	3,515	\$ 2.60	\$ 9,139.00	
3.			\$ 0.00	
4.			\$ 0.00	
5.			\$ 0.00	
6.			\$ 0.00	
7.			\$ 0.00	
8.			\$ 0.00	
9.			\$ 0.00	
10.			\$ 0.00	
TOTAL	9,011		\$ 22,054.60	\$ 2.45
Note: SY 2012-13 Weighted Average Price equal to or above \$2.59 are compliant for SY 2013-14. \$2.59 is the difference between the Free and Paid reimbursement rates for SY 2012-13.				

Total Price Increase for SY 2013-14
\$ 0.10

Required price increase for SY 2013-14 (with 10 cent cap)
\$ 2.55

Remaining increase carried forward to SY 2014-15
\$ 0.00

Remaining credit carried forward to SY 2014-15
\$ 0.00

[Go to SY2013-2014 Report](#)

Step 3 (Optional)

Pricing Estimation Calculator				
Below is a tool allowing users to manipulate prices to achieve the required new weighted average price.				
	Monthly # of Paid Lunches	Paid Lunch Price	Monthly Revenue	Weighted Average Price
1.	5,496	\$ 2.45	\$ 13,465.20	
2.	3,515	\$ 2.70	\$ 9,490.50	
3.			\$ 0.00	
4.			\$ 0.00	
5.			\$ 0.00	
6.			\$ 0.00	
7.			\$ 0.00	
8.			\$ 0.00	
9.			\$ 0.00	
10.			\$ 0.00	
TOTAL	9,011		\$ 22,955.70	\$ 2.55

Note: This tool is created to allow the user to only enter the number of paid lunches and the related prices. If any other parts of the tool are modified the user runs the risk of calculating an incorrect new average price. Users should not modify the tool's current functionality.

SY 2013-14 Non-Federal Contribution Calculator

[Go to Instructions](#)

SY 2013-14 Weighted Average Price Requirement	
Requirement price to the nearest cent	Optional price ROUNDED DOWN to nearest 5 cent
\$ 2.57	\$ 2.55
Note: Above prices are based on adjusting SY 2012-2013 price requirement by the 2% rate increase plus the Consumer Price Index (2.93%)	

Current Weighted Average Paid Price
Enter in the current weighted average paid lunch price. Note: If SFA did not change the weighted average paid lunch price in SY2011-2012 or SY2012-2013, enter the SY2010-11 weighted average price. Otherwise, click the link below.
Click here to determine SY2012-2013 weighted average price

Non-Federal Source Contribution Calculator for SY 2013-14		
Enter the total paid lunch count (for all prices). ** Annual Non-Federal Source funds for SY2013-2014 are estimated based on the ACTUAL lunch count entered below		
Enter annual # of Paid Lunches **	TOTAL Price Increase for SY 2013-14	TOTAL SY 2013-14 Annual Non-Federal Source Contribution
	\$ 0.00	\$ 0.00
Note: Total price increase for SY 2013-2014 is based on the difference between the weighted average price entered above and SY 2013-2014 rounded DOWN requirement.		

Enter total amount of Non-Federal Source Funds Contributed for SY 2011-12 and SY 2012-13	Annual Non-Federal Source Contribution Requirement for SY 2013-14
	\$ 0.00

Price Increase Requirement for SY 2013-14 (with 10 cent cap)	SY 2013-14 Annual Non-Federal Source Contribution (with 10 cent cap)
\$ 0.00	\$ 0.00

Remaining Annual Non-Federal Source Contribution carried forward to SY 2014-15
\$ 0.00

Remaining Credit carried forward to SY 2014-15
\$ 0.00

[Go to SY2013-2014 REPORT](#)

Note: This tool is created to allow the user to only enter the annual number of paid lunches and the amount of non-Federal Source funds contributed for SY

SY 2013-14 Split Price and Non-Federal Calculator

[Go to Instructions](#)

SY 2013-14 Weighted Average Price Requirement	
Requirement price to the nearest cent	Optional price requirement ROUNDED DOWN to nearest 5 cent
\$ 2.57	\$ 2.55
Note: Above prices are based on adjusting SY 2012-2013 price requirement by the 2% rate increase plus the Consumer Price Index (2.93%)	

SY 2012-13 Weighted Average Price Calculator			
Enter the paid prices and number of paid lunches sold at each price for October 2012 .			
Monthly # of Paid Lunches	Paid Lunch Price	Monthly Revenue	SY 2011-12 Weighted Average Price
1.		\$ 0.00	
2.		\$ 0.00	
3.		\$ 0.00	
4.		\$ 0.00	
5.		\$ 0.00	
6.		\$ 0.00	
7.		\$ 0.00	
8.		\$ 0.00	
9.		\$ 0.00	
10.		\$ 0.00	
TOTAL	-	\$ 0.00	\$ 0.00
Note: SY 2012-13 Weighted Average Price equal to or above \$2.59 are compliant for SY 2013-14. \$2.59 is the difference between the Free and Paid reimbursement rates for SY 2012-13.			

Total Price Increase for SY 2013-14
\$ 0.00

Required price increase for SY 2013-14 (with 10 cent cap)
\$ 0.00

New Price Increase
Enter the new price increase for SY2013-2014 to assist in meeting the requirement

Non-Federal Source Contribution Calculator for SY 2013-14				
Enter the total paid lunch count (for all prices). ** Annual Non-Federal Source funds for SY2013-2014 are estimated based on the ACTUAL lunch count entered below				
Enter annual # of Paid Lunches **	Total required Price Increase	TOTAL SY 2013-14 Annual Non-Federal Source Contribution	Price Increase Requirement for SY 2013-14 (with 10 cent cap)	SY 2013-14 Annual Non-Federal Source Contribution (with 10 cent cap)
	\$ 0.00	\$ 0.00	\$ 0.00	\$ 0.00
Note: Total price increase for SY 2013-2014 is based on the difference between the weighted average price entered above and SY 2013-2014 rounded DOWN requirement.				

Enter amount of Non-Federal Source Funds Contributed for SY 2011-12 and SY 2012-13	Annual Non-Federal Source Contribution Requirement for SY 2013-14	Remaining Annual Non-Federal Source Contribution carried forward to SY 2014-15	Remaining Credit carried forward to SY 2014-15
	\$ 0.00	\$ 0.00	\$ 0.00

SY2013-2014 Weighted Average Pricing Report

This report assists in tracking the pricing requirements and amounts carried forward for SY 2014-2015. Information on this report is used to determine the SY 2014-2015 weighted average price requirements.
 Please print and keep in records.

NOTE: If information is changed in the tool, the report contents will change.

Section 1: SY2013-2014 Weighted Average Paid Price Requirements

A. SY 2013-14 Weighted Average Price Requirement*: *This price will be entered into the SY 2014-2015 tool to determine the SY2014-2015 weighted average price requirements	\$2.57
B. Optional Price ROUNDED DOWN to nearest 5 cents:	\$2.55

Section 2: Amounts Carried Forward to SY 2014-2015

Select the SY 2013-2014 method used to ensure sufficient funds are provided for PAID Lunches

1

Average Weighted Price Adjustments

A. Remaining increase carried forward to SY 2014-15:	\$0.00
B. Remaining credit carried forward to SY 2014-15:	\$0.00

Non-Federal Source Contributions

C. Remaining Annual Non-Federal Source Contribution carried forward to SY 2014-15:	N/A
D. Remaining Credit carried forward to SY 2014-15:	N/A

Split Calculations

E. Remaining Annual Non-Federal Source Contribution carried forward to SY 2014-15:	N/A
F. Remaining Credit carried forward to SY 2014-15:	N/A

SY 2012-2013 Weighted Average Price Calculator

Enter current prices and number of lunches sold at each price using [October 2012](#) data.

	Monthly # of Paid Lunches	Paid Lunch Price	Monthly Revenue	SY 2012-13 Weighted Average Price
1.	5,496	\$ 2.35	\$ 12,915.60	
2.	3,515	\$ 2.60	\$ 9,139.00	
3.			\$ 0.00	
4.			\$ 0.00	
5.			\$ 0.00	
6.			\$ 0.00	
7.			\$ 0.00	
8.			\$ 0.00	
9.			\$ 0.00	
10.			\$ 0.00	
TOTAL	9,011		\$ 22,054.60	\$ 2.45 is the SY2012-13 Weighted Average Price

Enter this price in the first data entry box on the SY13-14 NonFederal Calculator

[Click to go back to SY 13-14 Non-Federal Calculator](#)

[Go to instructions](#)

Note: This tool is created to allow the user to only enter the number of paid lunches and the related prices. If any other parts of the tool are modified, the user runs the risk of calculating an incorrect new average

SY 2010-2011 Weighted Average Price Calculator

Enter current prices and number of lunches sold at each price using **October 2010** data.

	Monthly # of Paid Lunches	Paid Lunch Price	Monthly Revenue	SY 2010-11 Weighted Average Price
1.	5,493	\$ 2.25	\$ 12,359.25	
2.	3,513	\$ 2.50	\$ 8,782.50	
3.			\$ 0.00	
4.			\$ 0.00	
5.			\$ 0.00	
6.			\$ 0.00	
7.			\$ 0.00	
8.			\$ 0.00	
9.			\$ 0.00	
10.			\$ 0.00	
TOTAL	9,006		\$ 21,141.75	\$ 2.35 is the SY2010-2011 weighted average price

Enter this price in the first data entry box on the SY2011-12 Price Requirement tab

[Click to go back to Unrounded Requirement Finder](#)

[Go to instructions](#)

Note: This tool is created to allow the user to only enter the number of paid lunches and the related prices. If any other parts of the tool are modified, the user runs the risk of calculating an incorrect new average

ADDENDUM
SCHOOL FOOD SERVICE AGREEMENT
2013/14

The following is additional language to the Agreement for Management of a School Food Service Program dated July 1, 2013 between **TAHER, INC.**, a Minnesota corporation, with its principal place of business at 5570 Smetana Drive, Minnetonka, MN 55343 (called “CONTRACTOR”) and **SPRINGFIELD PLATTEVIEW COMMUNITY SCHOOLS**, 14801 S. 108th St., Springfield, NE 68059 (called “SPONSOR”).

THE PARTIES AGREE AS FOLLOWS:

1. Personnel Matters.

- A. Solicitation; Hiring. During the term of this Agreement and for a period of two years following its termination, neither SPONSOR nor its successors or assigns, shall employ, or seek to employ, any supervisory or management person (Chef, Food Service Director, District Manager) employed by CONTRACTOR who participated in providing the Food Service under this Agreement. SPONSOR acknowledges and agrees that the CONTRACTOR’S employees have acquired special knowledge, information, skills and contacts as a result of being employed with and trained by CONTRACTOR. If SPONSOR hires, makes any agreement with, or permits employment of, any such employee, within the restricted period of time, SPONSOR agrees that CONTRACTOR shall suffer damages and SPONSOR shall pay CONTRACTOR a liquidated sum equal to two and one half times the annual compensation for each such person hired. This paragraph shall survive the termination of the Agreement.

- B. New Employee Work Eligibility Verification. Pursuant to Nebraska Revised Statute § 4-114 the Contractor is required and hereby agrees to use a federal immigration verification system to determine the work eligibility status of new employees physically performing services within the State of Nebraska. A federal immigration verification system means the electronic verification of the work authorization program authorized by the Illegal Immigration Reform and Immigrant Responsibility Act of 1996, 8 W.S.C. 1324a, known as the E-Verify Program, or an equivalent federal program designated by the United States Department of Homeland Security or other federal agency authorized to verify the work eligibility status of a newly hired employee. The Contractor is further required and hereby agrees to include this same provision in every contract with subcontractors which will be physically performing services within the state of Nebraska in conjunction with the contractors’ contract with the District.

Pursuant to Nebraska Revised Statute § 4-108, if the Contractor is an individual or sole proprietorship, then the following also applies:

- 1) The Contractor must complete the United States Citizenship Attestation Form, available on the Nebraska Department of Administrative Services website at www.das.state.ne.us.
- 2) If the Contractor indicates on such attestation form that he or she is a qualified alien, the Contractor agrees to provide the U.S. Citizenship and Immigration Services documentation required to verify the contractor's lawful presence in the United States using the Systematic Alien Verification for Entitlements (SAVE) Program.
- 3) The Contractor understands and agrees that lawful presence in the United States is required and the contractor may be disqualified or the contract terminated if such lawful presence cannot be verified as required by Neb. Rev. State. § 4-108.

2. CONTRACTOR'S Compensation.

- A. General Compensation Structure. The gross receipts from CONTRACTOR's operation of the Food Service shall be retained by SPONSOR, including all cash, credits, reimbursements and commodity payments. Commodities received by the SPONSOR will be turned over to the CONTRACTOR for use only in SPONSOR's school lunch program. The CONTRACTOR shall provide a report that identifies contents of each deposit by the type of sale to SPONSOR at the close of each month. The SPONSOR shall maintain control of the school lunch account, has overall financial responsibility for the food service and shall pay the CONTRACTOR from the gross receipts deposited in the SPONSOR's food service bank account.
- B. Definitions. The following definitions shall be used in this Agreement:
 - 1) Billing Rates: CONTRACTOR shall provide the Food services on a basis whereby CONTRACTOR shall be reimbursed a Meal Fee per Meal Type. The fee charged by the Contractor during the 2013/2014 school year will be as follows: $\$2.82 + \$.22 = \$3.04$ for student lunches, 1.45 for student breakfasts, \$.78 for snacks, and \$3.01 for Ala Carte Equivalents.
 - 2) Equivalent. The term "Meal Equivalent" shall mean the total of the sales for a la carte items, milk, and miscellaneous items in the operation of the food service divided by the equivalent rate of \$3.1075 per meal.
 - 3) Costs of Business. The term "Costs of Business" shall mean the sum of all costs, charges, and expenses incurred by CONTRACTOR in connection with its operation of the Food Service including, but not limited to the following items:
 - a) CONTRACTOR'S direct cost of labor for the operation of the Food Service, including wages and overtime, salaries, bonuses, retirement plans, vacation, sick pay and severance pay; group benefits such as health insurance and

pension; worker's compensation and unemployment compensation insurance; payroll taxes, employee meals, travel expenses and other directly related labor costs;

- b) CONTRACTOR'S cost of food, beverages, merchandise, materials, expendables and supplies purchased by it for the operation of the Food Service, excluding donated commodities but including applicable taxes and delivery charges, less all applicable discounts and rebates that will be subtracted on the original invoice;
- c) CONTRACTOR'S costs of all other operating expenses incurred by it with respect to its operation of the Food Service including, but not limited to: costs of licenses, permits, maintenance and rental expenses, rent, security costs and cash losses or disappearances incurred by CONTRACTOR on SPONSOR'S Premises not involving CONTRACTOR'S employees or agents, information systems, software, armored car services, promotions or proprietary materials, decorations, necessary overnight delivery, general liability insurance based on the average manual rates for such insurance in the geographic area of SPONSOR'S Premises, other insurance maintained pursuant to the Agreement, out-of-pocket travel and related expenses for training of employees assigned to the Food Service operation, including the costs of an on-site trainer temporarily assigned to SPONSOR'S Premises, sales and use taxes; and any other services related to the operation of the Food Service; and
- d) Any tax plus penalties, which any government determines is payable by CONTRACTOR in the operation of the Food Service;

C. Assumptions. Financial terms of this Agreement are based upon the following assumptions (the "Assumptions"), based on information supplied by SPONSOR:

- 1) That all relevant federal, state and local statutes, rules and regulations relating to school lunch and breakfast programs in effect as of the date hereof shall remain consistent throughout the term of this Agreement;
- 2) That SPONSOR will comply with all federal and state requirements, rules and regulations pertaining to school lunch and breakfast programs and that SPONSOR will obtain all available school lunch and breakfast reimbursements;
- 3) That the quantity, quality and variety of donated commodities throughout the term of this Agreement will be a minimum of \$.2275 per reimbursable meal served;

- 4) That the hours of service of meals, service requirements, type or number of facilities selling food and beverages on SPONSOR's Premises will remain consistent throughout the year;
- 5) That the federal reimbursement rate will be a minimum of \$2.86 for each free lunch, \$2.46 for each reduced price lunch and \$.27 for each paid lunch; \$1.55 for each free breakfast, \$1.25 for each reduced breakfast, and \$.27 for each paid breakfast;
- 6) That the prices charged for school lunches will be \$2.45 for elementary students, \$2.70 for secondary students; \$1.50 for elementary student breakfast and \$1.75 for secondary breakfast; and that these charges will remain constant through the term of this Agreement;
- 7) That SPONSOR's enrollment will be at or above what is specified in the request for proposal throughout the term of this Agreement;
- 8) That there will be at least 178 days of Food Service operation for lunch and 151 days for breakfast. If there is a significant deviation in the days of service, there may need to be a recalculation of the budgeted return; and
- 9) That there occur no fires, floods, wars, riots, strikes, labor unrest, weather, or other events or acts beyond CONTRACTOR's control, which adversely affect the cost of CONTRACTOR's performance of this Agreement.

D. Inventory. Prior to the start of initial operation of the Food Service, SPONSOR and CONTRACTOR will take a beginning inventory of all usable food, supplies and donated commodities on SPONSOR's Premises. CONTRACTOR shall use such inventory which it determines, in its reasonable discretion, is usable in the Food Service at a value determined by invoice cost. On termination of this Agreement, SPONSOR and CONTRACTOR will take another inventory of the usable food, supplies and donated commodities on hand at that time. If, in using the same valuation method used in the initial inventory, it is found that the value of ending inventory is greater than the value of beginning inventory, the difference shall be added to CONTRACTOR's Costs of Business, and if the value of the ending inventory is less, the difference shall be subtracted from CONTRACTOR's Cost of Business. All inventory shall remain on SPONSOR's Premises.

E. Budget. Prior to May 1 of each year, CONTRACTOR shall submit a budget for the upcoming school year pursuant to the Assumptions. The approved budget is attached as Exhibit A. The variance of actual occurrences during the upcoming school year from the Assumptions shall be at the risk of SPONSOR. If any of the Assumptions shall

prove to be inaccurate, the budget and all other financial terms of this Agreement, including those contained in paragraph 10F, shall be adjusted in proportion to the actual occurrences.

F. SPONSOR's Net Return; Unanticipated Profits. Provided that actual occurrences do not vary from the Assumptions, CONTRACTOR's budget provides for a net return to the SPONSOR on the Food Service based on the approved meals prices and budget for the school year ("Target Net Return"). If SPONSOR's Target Net Return is less than such amount for reasons other than a variance from the Assumptions due to causes beyond the control of CONTRACTOR, CONTRACTOR's Fees otherwise payable under this Agreement shall be reduced by 100% of the amount of the deficiency. Any and all guaranteed returns must remain in the SPONSOR's nonprofit food service fund.

3. Budget. Prior to May 1 of each year, CONTRACTOR shall submit a budget with billing rates for the upcoming school year pursuant to the Assumptions. The variance of actual occurrences during the upcoming school year from the Assumptions shall be at the risk of SPONSOR. If any of the Assumptions or details as presented in the RFP shall prove to be inaccurate, the budget and all other financial terms of this Agreement shall be adjusted in proportion to the actual occurrences.

4. Payment; Deposit. CONTRACTOR shall account to SPONSOR on a calendar month basis over ten (10) months beginning on the first month of the school year. Prior to the end of the following month, CONTRACTOR shall submit to SPONSOR an itemized monthly invoice. Invoices are payable within ten (10) days of receipt, with past due amounts subject to a monthly service charge of 1.5% per month (or maximum legal rate if lesser) and collection costs (including reasonable attorneys' fees) as incurred. Any interest payments due CONTRACTOR for non-payment shall not be paid to CONTRACTOR out of the nonprofit lunch fund, but rather SPONSOR'S general fund. Before the school year begins, CONTRACTOR shall submit an invoice to SPONSOR equal to one month's meal counts. On the final invoice for the school year, CONTRACTOR shall credit SPONSOR for payment of said invoice and any net credit balance shall be paid to SPONSOR.

5. Indemnity.

A. CONTRACTOR's Obligation. CONTRACTOR shall indemnify and hold SPONSOR harmless from and against all claims, liability, losses, costs, expenses including reasonable attorney's fees, and damages arising out of production, preparation, sales and delivery of food products by CONTRACTOR or out of CONTRACTOR's use of delivery vehicles; provided, however, that SPONSOR shall give CONTRACTOR and its insurers the opportunity to defend, litigate and settle such claims and SPONSOR shall cooperate in such defense.

- B. SPONSOR's Obligation. SPONSOR shall indemnify and hold CONTRACTOR harmless from and against all claims, liability, losses, costs, expenses including reasonable attorney's fees, and damages arising out of any personnel action taken by SPONSOR or by CONTRACTOR at SPONSOR's direction or out of injury or death of persons or damage to property, except those described in paragraph 14A above, if such claims are covered by insurance maintained by or for the benefit of SPONSOR. SPONSOR shall also indemnify and hold CONTRACTOR harmless from and against any liability or assessment, including related interest and penalties, arising from tax assessment on the Food Service operation other than CONTRACTOR's employee taxes and city, state or federal income taxes, and shall pay expenses, including reasonable attorney's fees, incurred by CONTRACTOR in enforcement of the indemnity.
- C. Mutual Obligations. Each party shall indemnify and hold the other harmless from and against any claims, liability, losses, costs, expenses including reasonable attorney's fees, and damages arising out of any injury (whether to body, property, or personal or business character or reputation) sustained by any person or to any person or to property by reason of any act, neglect, default, or omission of it or any of its agents, employees, or other representatives, and it shall pay all sums to be paid or discharged in case of an action for any such damages or injuries. If either party is sued in any court for damages by reason of any of the acts of the other party referred to herein, such other party shall defend said action, or cause same to be defended, at its own expense and shall pay and discharge any judgment that may be rendered in any such action. If such other party fails to or neglects to so defend the said action, the party sued may defend the same and any expenses, including reasonable attorneys' fees, which it may pay or incur in defending said action and the amount of any judgment which it may be required to pay shall be promptly reimbursed by the other party upon demand. Nothing herein is intended to nor shall it relieve either party from liability for its own acts, omissions, or negligence.
- D. Survival. Information specified in Section 6 shall survive termination of the Agreement.

6. Insurance.

- A. CONTRACTOR's Obligation. CONTRACTOR shall maintain, as a direct cost of operation, Worker's Compensation insurance as required by law; General Liability, including products liability, insurance with limits of \$1,000,000 for injury or death of any one person, \$4,000,000 for injury or death of two or more persons in any one occurrence; and \$500,000 for property damage for each occurrence; and Automobile Liability insurance with limits of \$1,000,000 for injury or death to any one person, \$3,000,000 for injury or death of two or more persons in any one occurrence; and \$500,000 property damage for each occurrence. At SPONSOR's request, CONTRACTOR shall deliver to SPONSOR certificates evidencing such insurance.

- B. SPONSOR's Obligation. SPONSOR shall maintain fire and extended coverage insurance on SPONSOR's Premises, the equipment and the utensils for their full insurable value. SPONSOR shall endeavor to secure an appropriate clause in or an endorsement upon, each fire or extended coverage or rent insurance policy obtained by it covering SPONSOR's Premises and the equipment, fixtures, and other personal property located thereon, pursuant to which the respective insurance companies waive subrogation or permit the insured, prior to any loss, to agree with a third party to waive any claim it might have against such third party. The waiver of subrogation or permission for waiver of any claim shall extend to CONTRACTOR and its employees and agents. At CONTRACTOR's request, SPONSOR shall obtain and deliver to CONTRACTOR certificates evidencing such insurance.
7. **Force Majeure.** CONTRACTOR shall not be responsible for any delay or failure to perform its obligations under this Agreement resulting from fires, floods, wars, riots, strikes, weather, or other events or acts beyond its control, provided, however, in the event of strike or other work stoppage which interferes with the operation of the Food Service, CONTRACTOR shall, upon SPONSOR'S request, take all reasonable steps to continue to provide Food Service, subject to reimbursement by SPONSOR.
8. **Renewal.** This Agreement is renewable each year for four (4) additional one-year terms, at the SPONSOR'S discretion and by mutual agreement. The contract may be terminated at the option of either party upon written notice of non-renewal given to the other party at least sixty (60) days prior to the start of the school year. By May 1st of each year, the CONTRACTOR shall indicate its desire to renew this Agreement by submitting to SPONSOR a budget for the operation of the Food Service for the upcoming school year. The budget shall contain all of the detail of the budget attached to the Food Service Agreement and shall set out any amendments of the Assumptions on which CONTRACTOR has relied in preparing the new budget. Financial terms for each renewal will be negotiated annually by reference to increase in the Consumer Price Index for Food and Beverages Away from Home in the Midwest Region for the same period.
9. **Termination.** This Agreement shall be terminated as follows:
- A. **For Cause.** If either party breaches a material provision of this Agreement, the non-breaching party may give the breaching party notice of such breach. If the breach is remedied within ten days, in the case of failure to make payment when due, or within sixty days in the case of any other breach, the notice shall be null and void. If such breach is not remedied within the time specified, the party giving notice shall have the right to terminate this Agreement upon expiration of such remedy period. These rights of termination are not exclusive, but are in addition to any other rights available to a party at law or in equity.

B. **Without Cause**. Either party may terminate this Agreement at any time without cause upon sixty days written notice to the other party.

Upon termination of this Agreement, CONTRACTOR shall be compensated as provided herein for its performance of this Agreement through the date of termination and CONTRACTOR shall surrender SPONSOR'S Premises, equipment and utensils in the same condition as received by CONTRACTOR, reasonable wear and tear excepted.

IN WITNESS WHEREOF, the parties execute this Agreement as of the date first above written.

SCHOOL FOOD AUTHORITY:

By: _____

Title: _____

Date: _____

FOOD SERVICE MANAGEMENT COMPANY:

By: _____

T i t l e : _____

—

Date: _____

APPROVED BY STATE AGENCY:

By: _____

Title: _____

Date: _____

**Springfield Platteview Community Schools
2014 - 2015**

July 2014							August 2014							September 2014						
Su	Mo	Tu	We	Th	Fr	Sa	Su	Mo	Tu	We	Th	Fr	Sa	Su	Mo	Tu	We	Th	Fr	Sa
		1	2	3	4	5						1	2	1	2	3	4	5	6	
6	7	8	9	10	11	12	3	4	5	6	7	8	9	7	8	9	10	11	12	13
13	14	15	16	17	18	19	10	11	12	13	<u>14</u>	15	16	14	15	16	17	18	19	20
20	21	22	23	24	25	26	17	18	19	20	21	22	23	21	22	23	24	25	26	27
27	28	29	30	31			24	25	26	27	28	29	30	28	29	30				
							31													

October 2014							November 2014							December 2014						
Su	Mo	Tu	We	Th	Fr	Sa	Su	Mo	Tu	We	Th	Fr	Sa	Su	Mo	Tu	We	Th	Fr	Sa
			1	2	3	4							1		1	2	3	4	5	6
5	6	7	8	9	10	11	2	3	4	5	6	7	8	7	8	9	10	11	12	13
12	13	14	15	16	<u>17</u>	18	9	10	11	12	13	14	15	14	15	16	17	18	<u>19</u>	20
19	<u>20</u>	21	22	23	24	25	16	17	18	19	20	21	22	21	22	23	24	25	26	27
26	27	28	29	30	31		23	24	25	26	27	28	29	28	29	30	31			
							30													

January 2015							February 2015							March 2015						
Su	Mo	Tu	We	Th	Fr	Sa	Su	Mo	Tu	We	Th	Fr	Sa	Su	Mo	Tu	We	Th	Fr	Sa
				1	2	3	1	2	3	4	5	6	7	1	2	3	4	5	6	7
4	5	6	7	8	9	10	8	9	10	11	12	13	14	8	9	10	11	12	<u>13</u>	14
11	12	13	14	15	16	17	15	16	17	18	19	20	21	15	16	17	18	<u>19</u>	20	21
18	19	20	21	22	23	24	22	23	24	25	26	27	28	22	23	24	25	26	27	28
25	26	27	28	29	30	31								29	30	31				

April 2015							May 2015							June 2015							
Su	Mo	Tu	We	Th	Fr	Sa	Su	Mo	Tu	We	Th	Fr	Sa	Su	Mo	Tu	We	Th	Fr	Sa	
			1	2	3	4						1	2			1	2	3	4	5	6
5	6	7	8	9	10	11	3	4	5	6	7	8	9	7	8	9	10	11	12	13	
12	13	14	15	16	17	18	10	11	12	13	14	15	16	14	15	16	17	18	19	20	
19	20	21	22	23	24	25	17	18	19	20	<u>21</u>	22	23	21	22	23	24	25	26	27	
26	27	28	29	30			24	25	26	27	28	29	30	28	29	30					
							31														

Bold Contract Day - No Classes
Strike Early Dismissal

Double No Classes, - No Teachers
Bold-Strike One (1) Hour Late Start

 1st Day of Quarter
 Last Day of Quarter

Note: All Mondays that school is in session is a one hour late start.

First Semester

- 8/7 New Teacher Workshop
- 8/8, 11-13 All Staff Report
- 8/14 First Day of Classes
- 9/1 Labor Day – No Classes
- 9/29 Teacher In-Service – No Classes
- 10/17 Early Dismissal – End of 1st Quarter

- (45 Student Days/50 Teacher Days)

- 10/20 1st Day of 2nd Quarter
- 10/22-23 Early Dismissal – Parent-Teacher Conferences
- 10/24 Comp Day – No Class
- 11/26 Early Dismissal – ½ Teacher Contract Day
- 11/27-28 No School - Thanksgiving
- 12/17-19 Early Dismissal – Semester Finals
- 12/19 ½ Teacher Contract Day
- 12/22-1/2 Break

(42 Student Days/43 Teacher Days - 42 Teacher Contract Days)

178 Total Student Days
187 Total Teacher Days (186 Total Teacher Contract Days)

Second Semester

- 1/5 1st day of 3rd Quarter - 2nd semester
- 1/19 No School – Martin Luther King Day
- 2/11 Early Dismissal – Parent-Teacher conferences
- 2/12 Early Dismissal – Parent-Teacher conferences
- 2/13 Comp Day – No Classes
- 2/16 No School – President’s Day
- 3/13 Early Dismissal – End of 3rd Quarter

- (47 Student Days/48 Teacher Days)

- 3/16-18 Break
- 3/18 Teacher In-Service – No Classes
- 3/19 1st Day of 4th Quarter
- 4/3 No School
- 4/6 No School
- 5/13 Last Day for Seniors
- 5/17 Commencement
- 5/19-20 Early Dismissal – Finals
- 5/21 Early Dismissal – Finals – Last Day
- 5/22 Teacher Work Day

(44 Student Days/46 Teacher Days)



Board of Education
Self-Assessment
BA.1 (Narrative)

Role of the Board:

The role of the board is to ensure the school district is responsive to the values, beliefs, and priorities of the community. The board fulfills this role by performing five major responsibilities:

➤ **Vision**

Of all the roles and responsibilities of governing boards, none is more central to the purpose of local school governance than ensuring that a long-term vision is established for the school district. The vision reflects the consensus of the community, the board, and the district staff as to what students need in order to achieve their highest potential. The vision should set a direction for the school district, driving every aspect of the district.

➤ **Leadership**

The board is responsible for establishing and maintaining an organizational structure that supports the district's vision and empowers the staff. Although the board does not implement policies or programs, board members are responsible for:

- Hiring and evaluating the superintendent and setting policy for hiring other personnel;
- Overseeing the development, review, update of and adopting policy;
- Setting a direction for and adopting curriculum;
- Establishing budget priorities, adopting the budget and overseeing facility issues; and
- Providing direction for and accepting collective bargaining agreements.

Authority is granted to the board as a whole, not each member individually. Board members fulfill their responsibilities by working together as a governance team with the superintendent to make decisions that will best serve the students of the district.

➤ **Support**

The board through their behavior and actions; have a responsibility to support the superintendent and staff as they carry out the direction of the board. This involves:

- Acting with a professional demeanor that models the district's beliefs and vision;
- Making decisions and providing resources that support mutually agreed upon priorities and goals;
- Upholding district policies the board has approved;
- Ensuring a positive personnel climate exists; and
- Being knowledgeable regarding the vision of the district and the ability to articulate the vision/goals to the public.

➤ **Accountability**

The board is accountable to the public for the performance of the school district. The board monitors progress toward accomplishing the district's vision and communicates that progress to stakeholders. In order to ensure personnel, program, and fiscal accountability, boards are responsible to:

- Evaluate the superintendent and set policy for the evaluation of personnel;
- Develop, review, and update policy;
- Monitor student achievement and curriculum/instruction effectiveness and adopt curriculum changes as necessary;
- Monitor and adjust district finances.

➤ **Community**

Board members have a responsibility to involve the community in meaningful ways in setting a direction for the district and to communicate clear information about district policies, educational programs, fiscal condition, and progress on goals adopted to achieve the vision. As the only locally elected officials chosen solely to represent the interests of children, board members also have a responsibility to speak out on behalf of the children. Boards are advocates for education, the students, and the school district's educational programs. Board members build support for public education in the local community, and at the state, and national levels.

The assessment process sets an example for the district, communicates expectations, sets a professional standard, and should be carried out in a positive and objective manner. Therefore,

- all board members should participate, complete the board self-assessment, and return to the board president to compile the results
- the board should conduct a work session / board retreat to discuss the self-assessment summary
- the board should develop goals to support the work of the board, address areas for improvement, and define a timeline to guide the process
- the board should develop a final written consensus reflecting the assessment process and the areas board members disagree that progress is being made. The written document should include the board goals and a timeline for completion.
- the board should adopt the goals and communicate with staff and community
- the board should include the goals in the annual board calendar on a monthly/bi-monthly schedule to monitor and track progress of the identified goals

Board Assessment 1 is a narrative assessment. The rating scale is as follows:

Please respond to the statements using the following narrative rating scale:

Met
Progressing
Not Met

I. BOARD QUALITIES	Met	Progressing	Not Met
a. The board displays a sincere and unselfish interest in public education which develops and contributes to the growth of students.			
b. The board possesses an understanding of the educational needs of the community.			
c. The board weighs all decisions in terms of what is best for the students of the school district.			
d. The board is visible in the community.			
e. The board is independent and open-minded and respects the decisions of individual board members and administrators.			
f. The board strives to improve board skills.			
g. The board participates in education workshops and conferences at the local and state level to <input type="checkbox"/> grow their knowledge and understanding of educational issues.			

Please provide comments to support narrative ratings of progressing or not met:

II. BOARD MEETINGS	Met	Progressing	Not Met
a. The board conducts all board meetings in a business-like manner, following accepted parliamentary procedures and rules.			
b. The board devotes time to matters pertaining to policy, planning, and evaluation and <input type="checkbox"/> refrains from discussion pertaining to administrative matters.			
c. The board conducts all meetings in accordance with the Open Meetings Law and provides <input type="checkbox"/> an opportunity for the public to address the board.			
d. The board has procedures as agreed upon between the board and the superintendent for developing the agenda and the distribution of materials to board members in advance of meetings.			
e. All board members make a sincere effort to be informed on all agenda items prior to board meetings.			
f. All board members treat its own members, the staff and the public with respect during meetings.			

Please provide comments to support narrative ratings of progressing or not met:

III. BOARD/SUPERINTENDENT RELATIONS	Met	Progressing	Not Met
a. The board establishes the conditions of the superintendent's employment and regularly provides fair and honest performance evaluations based on agreed-upon criteria.			
b. The board recognizes the superintendent as the chief executive officer and seeks his/her recommendations on all pertinent matters.			
c. The board doesn't infringe on the superintendent's area of administration and follows procedures as agreed upon by the board and superintendent in communicating with staff.			
d. The board refrains from public criticism of the superintendent/staff.			
e. The board encourages the superintendent to participate in professional association and activities.			

Please provide comments to support narrative ratings of progressing or not met:

IV. POLICY AND PLANNING	Met	Progressing	Not Met
a. The board understands their role as a policy-making body.			
b. The board continuously develops, reviews and updates district policies to support the vision/mission and goals of the district.			
c. The board annually develops, reviews, and/or updates the district long-range plan.			

Please provide comments to support narrative ratings of progressing or not met:

V. FINANCIAL MANAGEMENT	Met	Progressing	Not Met
a. The board understands the basic principles of school finance, including state, federal, and local sources of revenue.			
b. The board adopts a process and timeline for the preparation of the budget.			
c. The board ensures that the budget reflects the district's goals and priorities.			
d. The board monitors the financial status of the school district.			

Please provide comments to support narrative ratings of progressing or not met:

VII. BOARD/COMMUNITY RELATIONS	Met	Progressing	Not Met
a. The board refrains from committing to a position on an issue before all relevant facts are presented.			
b. The board provides, through policy, a procedure by which the board deals with complaints from the public.			
c. The board advocates district positions on educational issues with legislators and other political leaders.			
d. The board has an established procedure for disseminating information on crisis situations and controversial issues.			

Please provide comments to support narrative ratings of progressing or not met:

Phase I: Identify the strengths of the board

- ✓ Each board member should create their own list. In a round-robin fashion each member will share their list one item at a time and the board chair and/or facilitator will compile a list for the group to view.

Phase II: Identify areas of improvement for the board

- ✓ Complete Phase II in the same fashion as Phase I

Phase III: Identify performance goals the board would consider as priorities in the next year

- ✓ Complete Phase III in the same fashion as Phase I and II
- ✓ Review the compiled list for comparable issues and combine the items with the approval of the board
- ✓ Once a list has been agreed upon, have each board member vote for their top three priorities
- ✓ Compile a final list of three priorities based on popular vote
- ✓ As a collective group, identify performance objectives (i.e., the objectives provide a means to measure achievement) required to accomplish the identified goal

Note: It is important the board recognize the difference between district goals and goals set by the board to measure board governance/performance.



Board of Education
Self-
Assessment
BA.1 (Narrative)

Role of the Board:

The role of the board is to ensure the school district is responsive to the values, beliefs, and priorities of the community. The board fulfills this role by performing five major responsibilities:

➤ **Vision**

Of all the roles and responsibilities of governing boards, none is more central to the purpose of local school governance than ensuring that a long-term vision is established for the school district. The vision reflects the consensus of the community, the board, and the district staff as to what students need in order to achieve their highest potential. The vision should set a direction for the school district, driving every aspect of the district.

➤ **Leadership**

The board is responsible for establishing and maintaining an organizational structure that supports the district's vision and empowers the staff. Although the board does not implement policies or programs, board members are responsible for:

- Hiring and evaluating the superintendent and setting policy for hiring other personnel;
- Overseeing the development, review, update of and adopting policy;
- Setting a direction for and adopting curriculum;
- Establishing budget priorities, adopting the budget and overseeing facility issues; and
- Providing direction for and accepting collective bargaining agreements.

Authority is granted to the board as a whole, not each member individually. Board members fulfill their responsibilities by working together as a governance team with the superintendent to make decisions that will best serve the students of the district.

➤ **Support**

The board through their behavior and actions; have a responsibility to support the superintendent and staff as they carry out the direction of the board. This involves:

- Acting with a professional demeanor that models the district's beliefs and vision;
- Making decisions and providing resources that support mutually agreed upon priorities and goals;
- Upholding district policies the board has approved;
- Ensuring a positive personnel climate exists; and
- Being knowledgeable regarding the vision of the district and the ability to articulate the vision/goals to the public.

➤ **Accountability**

The board is accountable to the public for the performance of the school district. The board monitors progress toward accomplishing the district's vision and communicates that progress to stakeholders. In order to ensure personnel, program, and fiscal accountability, boards are responsible to:

- Evaluate the superintendent and set policy for the evaluation of personnel;
- Develop, review, and update policy;
- Monitor student achievement and curriculum/instruction effectiveness and adopt curriculum changes as necessary;

- Monitor and adjust district finances.

➤ **Community**

Board members have a responsibility to involve the community in meaningful ways in setting a direction for the district and to communicate clear information about district policies, educational programs, fiscal condition, and progress on goals adopted to achieve the vision. As the only locally elected officials chosen solely to represent the interests of children, board members also have a responsibility to speak out on behalf of the children. Boards are advocates for education, the students, and the school district's educational programs. Board members build support for public education in the local community, and at the state, and national levels.

The assessment process sets an example for the district, communicates expectations, sets a professional standard, and should be carried out in a positive and objective manner. Therefore,

- all board members should participate, complete the board self-assessment, and return to the board president to compile the results
- the board should conduct a work session / board retreat to discuss the self-assessment summary
- the board should develop goals to support the work of the board, address areas for improvement, and define a timeline to guide the process
- the board should develop a final written consensus reflecting the assessment process and the areas board members disagree that progress is being made. The written document should include the board goals and a timeline for completion.
- the board should adopt the goals and communicate with staff and community
- the board should include the goals in the annual board calendar on a monthly/bi-monthly schedule to monitor progress on the identified goals

Board Asses

**Please respond to the statements
using the
following narrative rating scale:
Met**

The rating scale is as follows:

Progressing

I. BOARD QUALITIES	Met	Progressing	Not Met
a. The board displays a sincere and unselfish interest in public education which develops and contributes to the growth of students.			
b. The board possesses an understanding of the educational needs of the community.			
c. The board weighs all decisions in terms of what is best for the students of the school district.			
d. The board is visible in the community.			
e. The board is independent and open-minded and respects the decisions of individual board members and administrators.			
f. The board strives to improve board skills.			
g. The board participates in education workshops and conferences at the local and state level to grow their knowledge and understanding of educational issues.			

Please provide comments to support narrative ratings of progressing or not met:

II. BOARD MEETINGS	Met	Progressing	Not Met
a. The board conducts all board meetings in a business-like manner, following accepted parliamentary procedures and rules.			
b. The board devotes time to matters pertaining to policy, planning, and evaluation and refrains from discussion pertaining to administrative matters.			
c. The board conducts all meetings in accordance with the Open Meetings Law and provides an opportunity for the public to address the board.			
d. The board has procedures as agreed upon between the board and the superintendent for developing the agenda and the distribution of materials to board members in advance of meetings.			
e. All board members make a sincere effort to be informed on all agenda items prior to board meetings.			
f. All board members treat its own members, the staff and the public with respect during meetings.			

Please provide comments to support narrative ratings of progressing or not met:

III. BOARD/SUPERINTENDENT RELATIONS	Met	Progressing	Not Met
a. The board establishes the conditions of the superintendent's employment and regularly provides fair and honest performance evaluations based on agreed-upon criteria.			
b. The board recognizes the superintendent as the chief executive officer and seeks his/her recommendations on all pertinent matters.			
c. The board doesn't infringe on the superintendent's area of administration and follows procedures as agreed upon by the board and superintendent in communicating with staff.			
d. The board refrains from public criticism of the superintendent/staff.			
e. The board encourages the superintendent to participate in professional association and activities.			

Please provide comments to support narrative ratings of progressing or not met:

IV. POLICY AND PLANNING	Met	Progressin g	Not Met
a. The board understands their role as a policy-making body.			
b. The board continuously develops, reviews and updates district policies to support the vision/mission and goals of the district.			
c. The board annually develops, reviews, and/or updates the district long-range plan.			

Please provide comments to support narrative ratings of progressing or not met:

V. FINANCIAL MANAGEMENT	Met	Progressin g	Not Met
a. The board understands the basic principles of school finance, including state, federal, and local sources of revenue.			
b. The board adopts a process and timeline for the preparation of the budget.			
c. The board ensures that the budget reflects the district's goals and priorities.			
d. The board monitors the financial status of the school district.			

Please provide comments to support narrative ratings of progressing or not met:

VII. BOARD/COMMUNITY RELATIONS	Met	Progressing	Not Met
a. The board refrains from committing to a position on an issue before all relevant facts are presented.			
b. The board provides, through policy, a procedure by which the board deals with complaints from the public.			
c. The board advocates district positions on educational issues with legislators and other political leaders.			
d. The board has an established procedure for disseminating information on crisis situations and controversial issues.			

Please provide comments to support narrative ratings of progressing or not met:

Phase I: Identify the strengths of the board

- ✓ Each board member should create their own list. In a round-robin fashion each member will share their list one item at a time and the board chair and/or facilitator will compile a list for the group to view.

Phase II: Identify areas of improvement for the board

- ✓ Complete Phase II in the same fashion as Phase I

Phase III: Identify performance goals the board would consider as priorities in the next year

- ✓ Complete Phase III in the same fashion as Phase I and II
- ✓ Review the compiled list for comparable issues and combine the items with the approval of the board
- ✓ Once a list has been agreed upon, have each board member vote for their top three priorities
- ✓ Compile a final list of three priorities based on popular vote
- ✓ As a collective group, identify performance objectives (i.e., the objectives provide a means to measure achievement) required to accomplish the identified goal

Note: It is important the board recognize the difference between district goals and goals set by the board to measure board governance/performance.

StudentsAnti-Bullying Policy

One of the missions of the District is to provide a physically safe and emotionally secure environment for students and staff.

The administration and staff are to implement strategies and practices to reinforce and encourage positive behaviors by students. Positive behaviors include non-violence, cooperation, teamwork, understanding, and acceptance of others.

The administration and staff are to implement strategies and practices to identify and prevent inappropriate behaviors by all students, including anti-bullying education for all students. Inappropriate behaviors include bullying, intimidation and harassment. Bullying means any ongoing pattern of physical, verbal, or electronic abuse on school grounds, in a vehicle owned, leased, or contracted by the school being used for a school purpose by a school employee or designee, or at school-sponsored activities or school-sponsored athletic events.

The school district shall review the anti-bullying policy annually.

Legal Reference: Laws 2008, LB 205
 Student Discipline Act, Neb. Rev. Stat. §§ 79-254 to 79-296
 NDE February 2003 State Board Action; Reaffirmed December 2006

Date of Adoption: August, 2008

Last Review: February 13, 2012



14801 S. 108th St.
Springfield, NE 68059
402-592-1300
www.springfieldplatteview.org

Negotiations Timeline

- On or before Sept. 1 the Association shall request recognition as bargaining agent (done).
- The governing board shall respond to such request not later than Oct. 1 (done by Board action).
- On or before Nov. 1 negotiations shall begin.
- On or before Feb. 8 if an agreement is not reached, the parties shall submit to mandatory mediation or factfinding as ordered by the commission unless parties mutually agree in writing to forgo mandatory mediation or factfinding.
- On or before March 25 or within 25 days after the certification of the amounts to be distributed to each local school system and each school district, whichever occurs last in time, negotiations, mediation, and factfinding shall end.
- If an agreement has not been achieved on or before the date in item 5 above, either party may, within 14 days after such date, file a petition to the commission to resolve the dispute.
- The commission shall render a decision on or before Sept. 15.

There shall be no fewer than 4 negotiations meetings between the certified and instructional employees' collective bargaining agent and the governing board's bargaining agent prior to mediation, unless the parties agree to a new negotiated agreement. Either party may seek a bargaining order as provided by statute at any stage in the negotiations. In seeking a bargaining order, the commission shall provide the parties with the name of 5 qualified individuals to serve as resolution officer. If the parties cannot agree on an individual, each party shall alternately strike names, with the remaining individual serving as the resolution officer.



**Board of Education
Future Planning
June 10, 2013**

1. 6/21/13- Foundation Golf Tournament, Tregaron Golf Course, 1 PM
2. 6/24/13- Board Work Session
3. 6/26/13- NASB Open Meetings Law Workshop: Lincoln, NE 6:30- 9:00 PM
4. 7/8/13- Regular Board Meeting: 6 PM- Site, 6:30 PM- Finance, 7 PM- Board Mtg.
5. 7/12/13- Foundation Dinner/ Auction, Millard Social Hall, 6 PM
6. 7/21/13- Board Retreat 8:30 AM
7. 7/22/13- Board Work Session 7 PM
8. 7/23/13- NASB School Finance Workshop, Lincoln, NE 5:30-8:45 PM