

CENTRAL COMMUNITY COLLEGE BOARD OF GOVERNORS MEETING
Thursday, April 17, 2025, 12:00 PM, Central Community College Administration Board
Room

Work Session begins at 11 a.m.

A G E N D A

Central Community College reserves the right to make changes to the agenda up to 48 hours prior to the scheduled meeting. A current copy of the agenda may be obtained in the College President's Office, 3134 W. Highway 34, Grand Island, Nebraska.

1. Agenda
Information Item
2. Dual Enrollment Software/Early College Online Registration
Action Item
3. UNK/CCC Housing Partnership Renewal
Action Item
4. Student Fee Update
Action Item

**Board Work Session Agenda
April 17, 2025, Grand Island**

Lunch will be provided.

Noon – Dual Enrollment Software/Early College Online Registration – Peterson-Jones

12:20 p.m. – UNK/CCC Housing Partnership Renewal - Klitz

12:35 p.m. – Student Fee Updates – King/Golka

12:55 p.m. – Break before meeting



UNK/CCC – Kearney Center Residential Housing Program

UNK/CCC Residential Housing Program

- Launched as pilot in the Fall of 2022
- Available for full-time students enrolled at the Kearney Center
- Opportunity for a collegiate residential experience
- Joint memorandum renewed in March of 2025



Eligibility

- Enrolled full-time at CCC in 12 or more credit hours
- Degree-seeking and in good academic standing as defined by CCC
- Age 25 or younger as of the first day of classes



How it works....



Housing costs at UNK are included in students' COA – for financial aid purposes



Students' housing charges and other service fees are placed on their CCC account



UNK invoices Central for the housing and corresponding fees per student/per semester

UNK/CCC Residential Housing Program

- CCC students pay published room rates and must purchase a meal plan (CCC students can choose a Commuter Meal Plan if desired)
- Optional Services for our students, offered at reduced rates
 - Counseling Services & Health Clinic
 - Student Events
 - Student Parking
 - Student Wellness Center
 - *Access to the UNK Wellness Center, Climbing Wall, Cushing Fieldhouse, and HPER gym*



Central Community College Housing Information

Welcome!

UNK Housing offers a variety of housing options for students to reside in. Our residence halls are close to campus services and campus activities.

[SIGN UP TO LIVE ON CAMPUS](#)

[UNK Housing](#)

[UNK Meal Plans](#)

[Campus Services](#)

We are excited to have you join our campus community. As a member of our community, you will continue to build your connections by participating in our floor socials and attending Community Council. Check out these pages to learn more about living on campus.

[CCC Student Housing Brochure](#)

Housing Options

[Mantor/Randall Halls](#)

[Centennial Towers](#)

OFFICE OF RESIDENCE LIFE

[Housing Options](#)

[Living Learning Communities](#)

[Residence Life Employment](#)

[About Us](#)

[Fix Something in My Room](#)

[Housing Policies and Procedures](#)

[Important Dates](#)

[Conference Services](#)

[Lofts and Beds](#)

[Our Commitment to Student Education](#)

[Residence Hall Virtual Tours](#)

[Move Out](#)

[Housing Frequently Asked Questions](#)

[Central Community College Housing Information](#)

[Housing Application Process](#)

[Finding a Roommate](#)

CCC/UNK Housing Options



Mantor Hall

- Lounge and study space on every wing
- Centrally located on campus
- Community bathrooms with private stalls cleaned by UNK staff.

Randall Hall

- Kitchenettes on every floor
- Spacious ground level lounge with movie room and game room
- Community bathrooms with private stalls cleaned by UNK staff



Centennial Towers

- Close to Union and dining options
- Lounge and study spaces on each floor
- Large social and gathering spaces

CCC Director of Student and Enrollment Services
karagreenwalt@cccneb.edu
308-338-4055

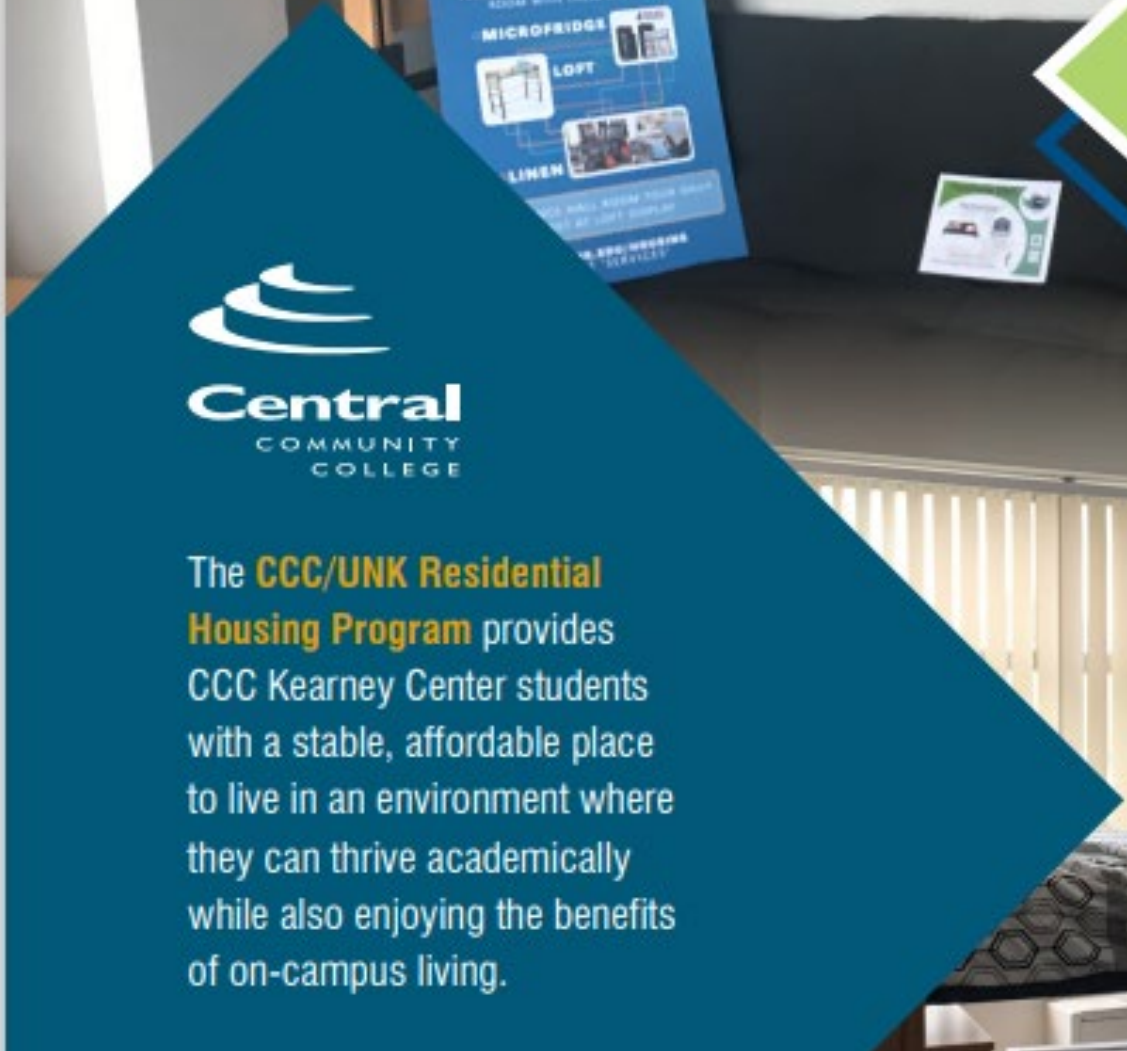
Becky Doubet
UNK Business Manager
housing@unk.edu
308-865-8519



CCC-UNK residential housing program

On-campus living for Central Community College-Kearney Center students at the





You will find support

Tending to your physical health and emotional well-being are just as important as pursuing your academic endeavors. The University of Nebraska at Kearney provides a safe environment for CCC-Kearney Center students to live - with a network of resources and an expert staff to help you along the way.



The **CCC/UNK Residential Housing Program** provides CCC Kearney Center students with a stable, affordable place to live in an environment where they can thrive academically while also enjoying the benefits of on-campus living.



Community Engagement
Build connections inside the residence halls and in Kearney



Professional Growth
Learn how to communicate well and resolve conflict in a healthy manner



Goals



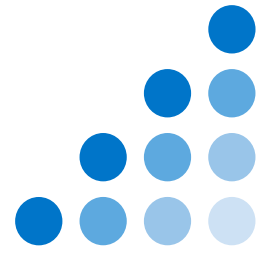
Continued increase in students participating



CCC Living/Learning Community



Strengthened institutional partnerships



Barnes & Noble
COLLEGE

Raider Ready Program



FIRST DAY RAIDER READY



Central
COMMUNITY
COLLEGE

Overview of Raider Ready



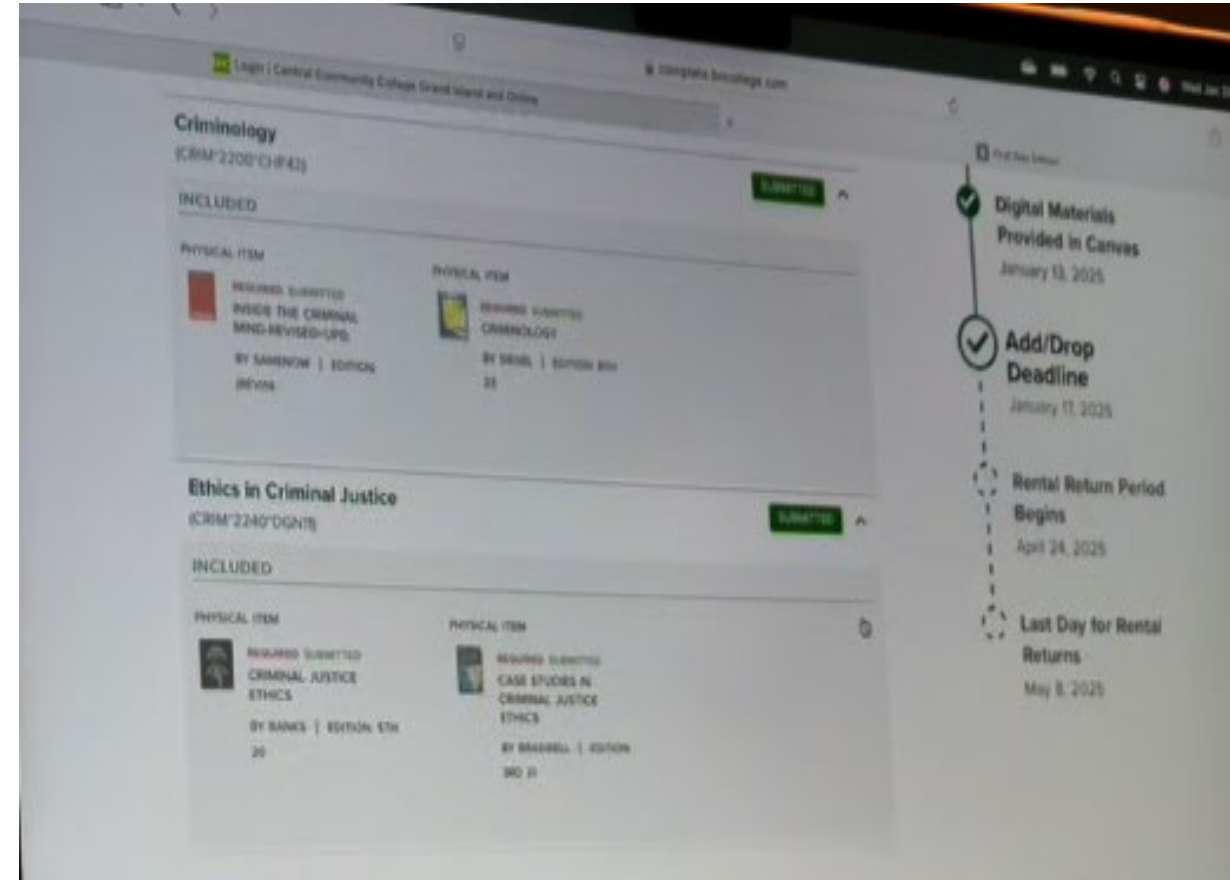
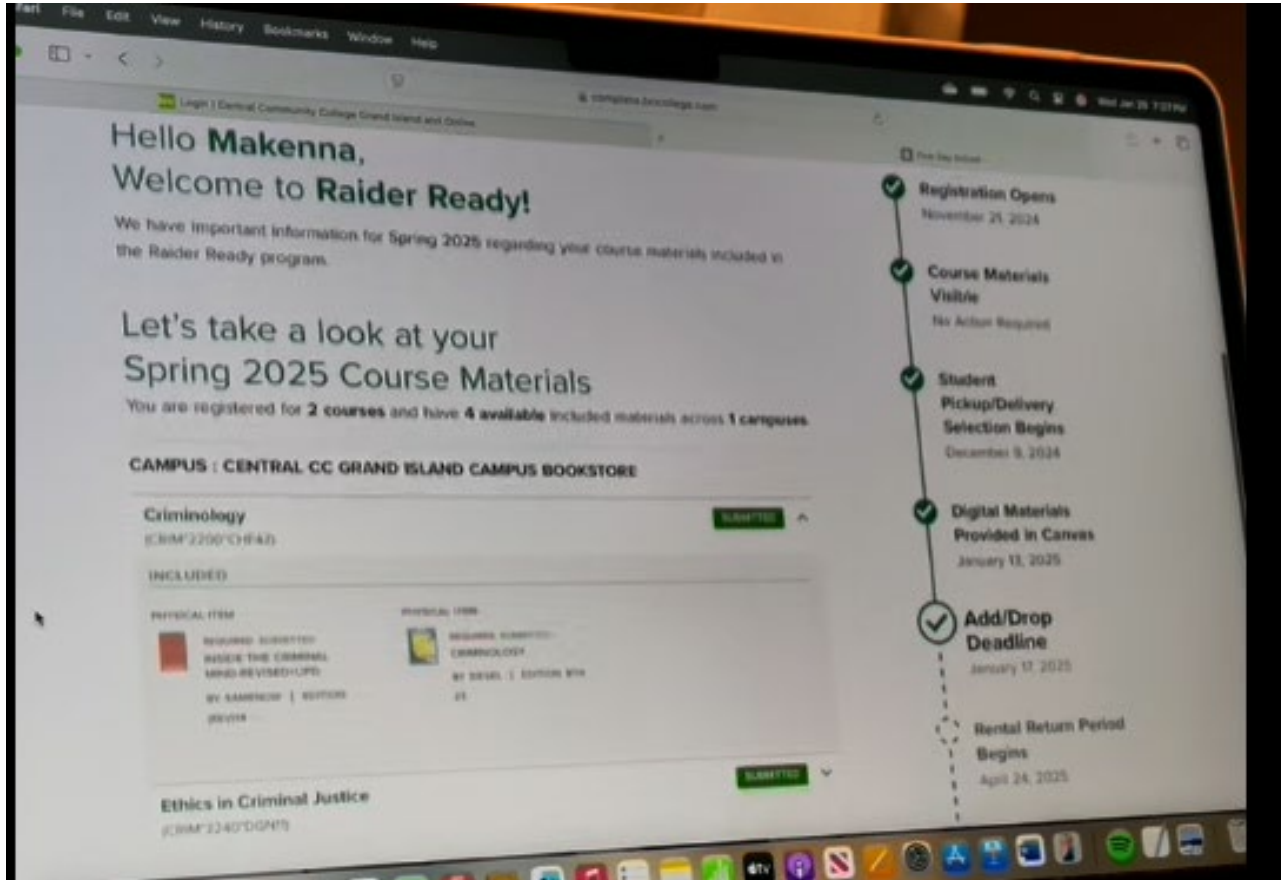
- A course material delivery program
- Launched in the Spring 2025 semester
- Reduces cost of course materials and ensures student access to required course materials by the first day of class.
- All required course materials included in \$22/credit fee
- Physical materials are issued on a rental basis for the semester

Review: How does it work?



- Students register for classes
- All students automatically registered for the program
- Students receive various communications from BNC and CCC on program and course materials
- Students verify order and choose delivery preference
- Receive textbooks and/or course materials

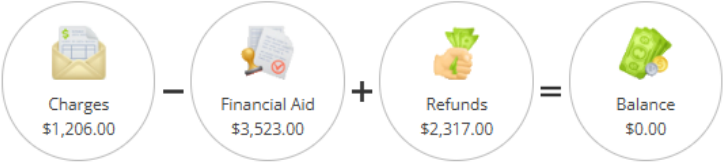
Student Portal View



Student MyCCC Account Activity & Comparison

Term Spring 2025 - Balance: \$0.00

[View Statements](#)



[Collapse All](#)

Charges \$1,206.00 ^									
Tuition \$864.00 v									
Raider Ready Charges \$198.00 ^									
Section	Course Title	Billing Credits	CEUs	Days	Times	Classroom	Instructor	Status	Amount
ACCT*1200*DCN11	Principles of Accounting I	3.00			TBD	Online ONLINE	J. Blackwell	New	\$66.00
ACCT*1340*DGN11	Excel - Business Applications	3.00			TBD	Online ONLINE	K. Hurt	New	\$66.00
MATH*1060*DHN91	Business Mathematics	3.00			TBD	Online ONLINE	C. Ng	New	\$66.00
Fees \$144.00 v									


9 credit hours	Opt-In	Opt-Out
Tuition (\$96/cr hr)	\$864	\$864
Fees (\$16/cr hr)	\$144	\$144
ACCT 1200 DCN 11	\$66	\$131.94
ACCT 1340 DGN 11	\$66	\$171.25
MATH 1060 DHN 91	\$66	\$112.49
Total Charges	\$1,206	\$1,423.68


First Semester Utilization

- Students who participated – 3,284
- Student who chose to opt out – 1,502
- Students excluded – 1,833

(Exclusions will be reduced for Fall 2025)


Raider Ready Landing Page

WebCentral Students & Employees ▼ Locations ▼ Athletics Employment Giving Search... 

 Visit CCC Request Info Apply Now

About CCC Admissions & Aid Educational Opportunities Student Life Alumni & Foundation

Admissions College Costs Transfer Options
Visit CCC Financial Aid and Textbooks: Raider Ready
Registration Day Scholarships
New Student Orientation

 "In school, they give you the foundation you need but really, on-the-job is where you learn the most."

Fine and Performing Arts

Student Organizations +

Student Policies and Procedures +

Student Services -

Academic Success Center +

Bookstore +

CARE Team +

Career and Employment Services +

Those services include:

- [Academic Success Center](#)
- [Bookstore](#)
- [CARE Team](#)
- [Career and Employment Services](#)
- [Community Resource Guides](#)
- [Counseling](#)
- [Disability Services](#)

Activate Window

Go to Settings to activ

Questions?

STUDENT COSTS

TUITION AND FEES

TUITION	\$99.00 / CREDIT HOUR
FEES	\$16.00 / CREDIT HOUR
NON-RESIDENT TUITION	\$148.50 / CREDIT HOUR

NON-CREDIT TUITION AND FEES (NCR)

FIRST 3 CONTACT HOURS	\$27.50/ FIRST 3 CONTACT HOURS
EACH ADDITIONAL CONTACT HOUR	\$3.50 / CONTACT HOUR

TRUCK DRIVING CHARGES - 6-WEEK PROGRAM

IN STATE OUT OF STATE

TUITION AND STUDENT FEES	\$1,308	\$1,956
PROGRAM FEES	\$2,070	\$2,070
HOUSING AND MEAL PLAN (200 MEALS)	\$1,275	\$1,275
PRGRAM DEPOSIT (NON-REFUNDABLE)	\$100	\$100

PRACTICUM INSURANCE

STUDENT IN PRACTICUM INSURANCE	\$12.00
NURSING ASSISTANT PRACTICUM INSURANCE	\$6.00

NURSING FEES

LIFESPAN I	\$3,802
LIFESPAN III	\$55

OCUPATIONAL THERAPY FEES

PHYSICAL AGENT MODALITIES CERTIFICATION COURSE I	\$100.00
OCCUPATION THERAPY KNOWLEDGE EXAM FEE	\$15.00

PARAMEDICINE FEES

FISDAP TRACKING SYSTEM (PHARM 1020)	\$146.00
ACLS CERTIFICATION CARD	\$72.00
PALS CERTIFICATION CARD	\$80.00
PHTLS CERTIFICATION CARD	\$20.00
AMLS CERTIFICATION CARD	\$20.00

PHARMACY TECHNICIAN FEES

PHARMACY TECH CERT BOARD PRE-TEST	\$29.00
PHARMACY TECH CERT BOARD TEST	\$129.00
PHARMACY LAW BUSINESS APPLICATIONS	\$25.00

COPIER FEES (PAPER CUT)

BLACK AND WHITE SINGLE SIDE	\$0.05
BLACK AND WHITE DUPLEX	\$0.06
COLOR SINGLE SIDE	\$0.10
COLOR DUPLEX	\$0.11

HMRM KITS

CULINARY ARTS KITS	\$235.00
HOSPITALITY KITS	\$125.00

RAIDER READY (BOOKS) \$22.00 / CREDIT HOUR

MIDWEST EXCHANGE PROGRAM \$100.00 / CREDIT HOUR

INDIANA, KANSAS, MINNESOTA, MISSOURI, NEBRASKA, NORTH DAKOTA,
OHIO, AND WISCONSIN.