

Board of Education Special Meeting

Thursday, September 26, 2024 5:00 PM

1. OPEN THE MEETING

1.1. **Call to Order**

1.1.1. **Publication of Meeting**

1.1.2. **Nebraska Open Meetings Law**

1.2. **Board Member Roll Call**

Motion was made to dismiss board member Morgan Fouts. This motion, made by Alicia Beavers and seconded by JC Ourada, Passed.

Alicia Beavers: Yea, Cole Brodine: Yea, Hannah Hild: Yea, Lynette Mitchell: Yea, JC Ourada: Yea

2. PUBLIC COMMENT (agenda item specific)

3. INFORMATION ITEMS

3.1. **Superintendent Beran Share Vehicle Purchase Information**

4. ACTION ITEMS

4.1. **Discuss and Take any Necessary Action to Purchase School Vehicles**

The motion was passed to authorize the superintendent to purchase vehicles up to \$150,000 necessary for district operations. This motion, made by Cole Brodine and seconded by Hannah Hild, Passed.

Alicia Beavers: Yea, Cole Brodine: Yea, Hannah Hild: Yea, Lynette Mitchell: Yea, JC Ourada: Yea

4.2. **Discuss & Take any Necessary Action for Building Rental for Vehicles**

4.3. **Discuss and Take any Necessary Action to Sell or Trade In District Vehicles No Longer Needed**

The motion was made to authorize the superintendent to sell or trade in vehicles not necessary for district operations. This motion, made by Alicia Beavers and seconded by Cole Brodine, Passed.

Alicia Beavers: Yea, Cole Brodine: Yea, Hannah Hild: Yea, Lynette Mitchell: Yea, JC Ourada: Yea

4.4. **Discuss & Consider Approval to Amend the 24-25 Calendar**

Motion was made to amend the calendar for the FKC Elm Creek Cross Country invite with an 11:30 Dismissal on Friday, October 4th for the Cross Country meet. This motion, made by Alicia Beavers and seconded by Hannah Hild, Passed.

Alicia Beavers: Yea, Cole Brodine: Yea, Hannah Hild: Yea, Lynette Mitchell: Yea, JC Ourada: Yea

5. SCHEDULE NEXT REGULAR BOARD MEETING

6. ADJOURN

Motion was made to adjourn at 5:46 PM. This motion, made by Alicia Beavers and seconded by JC Ourada, Passed.

Alicia Beavers: Yea, Cole Brodine: Yea, Hannah Hild: Yea, Lynette Mitchell: Yea, JC Ourada: Yea

7. **CLOSED SESSION: If, during the course of the meeting, discussion of any item on the agenda should be held in a closed meeting, the board will conduct a closed meeting in accordance with the Nebraska Open Meetings Act.

8. **SEQUENCE OF AGENDA: The sequence of agenda topics is subject to change at the discretion of the board.

2009
Public Participation at Board Meetings

The board of education shall conduct its meetings in accordance with the Nebraska Open Meetings Act.

The board shall make reasonable efforts to accommodate the public's right to hear the discussions and testimony presented at its meetings. The board shall make available at the meeting, for examination and copying by members of the public, at least one copy of all reproducible written material to be discussed in open session of the meeting.

Except for closed sessions, the board will allow members of the public an opportunity to speak at each meeting. The board may make and enforce reasonable rules and regulations regarding the conduct of persons attending, speaking at, videotaping, photographing, or recording its meetings.

The board shall not require members of the public to identify themselves as a condition for admission to the meeting, nor shall such body require that the name of any member of the public be placed on the agenda prior to such meeting in order to speak about items on the agenda. However, the board shall require members of the public desiring to address the board to identify themselves, including an address and the name of any organization represented by such person unless the address requirement is waived to protect the security of the individual.

Adopted on: _____

Revised on: _____

Reviewed on: _____

PUBLIC PARTICIPATION

INSTRUCTIONS FOR MEMBERS OF THE PUBLIC WHO WISH TO SPEAK:
This is the portion of the meeting when members of the public may speak to the board about matters of public concern.

- **Getting Started:** When you have been recognized, please stand and state your name.
- **Time Limit:** The board will generally allow a total of 30 minutes for the presentation of all public comments. Individuals may speak only one time, and must limit comments to around 5 minutes. If there are more than 6 individuals who wish to address the board, the 30 minutes will be divided equally between the number of speakers. These time limits may be changed by a majority vote of the board members in attendance to extend the time for a specific item or speaker.
- **Personnel or Student Topic:** If you are planning to speak about a personnel or a student matter involving an individual, please understand that the district has a complaint policy and/or procedures to resolve such complaints and concerns. The Board requests that you follow the policy and procedures before addressing these matters with the Board. Board members will generally not respond to any questions you ask or comments about individual staff members or students.
- **General Rules:** This is a public meeting for the conduct of business. Comments from the audience while others are speaking will not be tolerated. Lewd, obscene, profane, slanderous, threatening and hostile conduct or statements and fighting words (words whose mere utterance entails a call to violence) will not be tolerated.
- **No Action by the Board:** The board will not act on any matter unless it is on the published agenda.

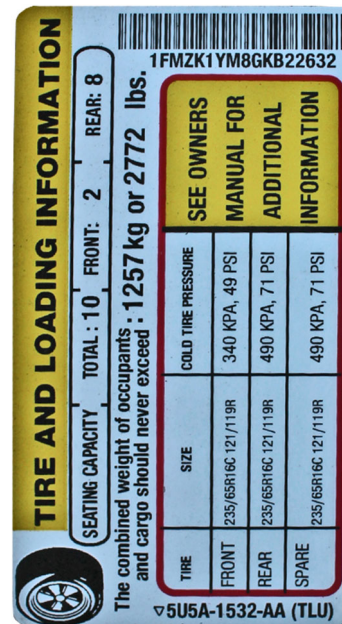
The use of 12 and 15 passenger rated vans for student transportation is illegal.

Federal law prohibits the use of any passenger vehicle, for student transportation, which is rated for more than 10 passengers plus the driver by the manufacturer. Federal law also contains substantial penalties for schools, rental agencies and vehicle dealerships.

The rated capacity can be found on the Tire and Loading Information sticker which is normally located on the inside driver's door.

The passenger rating is determined by the vehicle manufacturer and cannot be changed by anyone other than a manufacturer.

It is illegal for the school or anyone other than a manufacturer to remove seats from a van to meet the mandated passenger requirement for student transportation. This would apply to both a school and/or a dealership if the intention is to circumvent the mandated passenger rating for school transportation.



Van vs Bus

This is a Van



- A van will have a sliding or cargo style door for additional passenger entry
- 12 & 15 Passenger Rated Vans are illegal for student transportation

These are buses

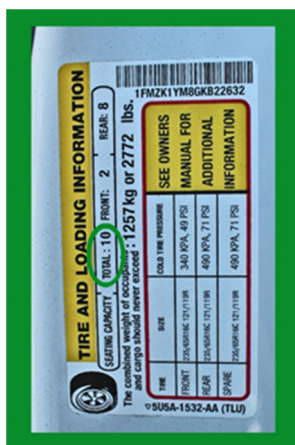


- A bus will have a service door and a stepwell for passenger entry
- Buses are rated for more than 10 passengers in addition to the driver

Tire & Load Stickers

Any VAN used for student transportation shall have a legible tire and load sticker applied by the manufacturer indicating a passenger rating of 10 passengers or less. 12 and 15 passenger rated vans are illegal for student transportation.

Note: The vehicle shall not have any attachment/access points and or tracks for additional passenger seats. This excludes vans designed for wheel chairs.



Second Stage Manufacturer/Converter

Currently no new vehicle manufacture is producing a gas powered, 10 passenger rated van. An available option for schools to purchase a 10 passenger rated van is by using a reputable, licensed, second stage manufacturer.



The second stage manufacturer takes a NEW VAN, still on a Manufacturers Certificate/ Statement of Origin, which may or may not have a passenger rating. Altering the vehicle per ALL applicable Federal Motor Vehicle Safety Standards, Federal and State Laws necessary to produce a 10 passenger rated van. The second stage manufacturer then certifies the passenger rating and applies the appropriate Tire and Load sticker. The school SHALL NOT purchase or take possession of any van until the second stage manufacturer completes the work and applies the appropriate Tire and Load sticker with the 10 passenger rating.

Bear in mind, federal and state laws pertaining to the passenger rating necessary for legal and safe transportation of students. The requirement for a reputable second stage manufacture is paramount in the event the vehicle is involved in a crash.

TIRE AND LOADING INFORMATION

SEATING CAPACITY TOTAL: 10 FRONT: 2 REAR: 8

The combined weight of occupants and cargo should never exceed: 1257 kg or 2772 lbs.

1FMZK1YM8GKB22632

		SEE OWNERS MANUAL FOR ADDITIONAL INFORMATION		
TIRE	SIZE	COLD TIRE PRESSURE		
FRONT	235/65R16C 12/119R	340 KPA, 49 PSI	490 KPA, 71 PSI	490 KPA, 71 PSI
REAR	235/65R16C 12/119R			
SPARE	235/65R16C 12/119R			

▽5U5A-1532-AA (TLU)

THIS VEHICLE WAS ALTERED BY:
DRIVERGE VEHICLE INNOVATIONS
30 FUNSTON RD KC KANSAS

IN: MO. 06 YR. 2023
AND AS ALTERED IT CONFORMS TO ALL APPLICABLE U.S.A. FEDERAL MOTOR VEHICLE SAFETY, BUMPER AND THEFT PREVENTION STANDARDS AFFECTED BY THE ALTERATION AND IN EFFECT IN:

MO. 06 YR. 2023
COMPLETE BELOW IF GVWR, GAWR, OR VEHICLE TYPE IS CHANGED OR ALTERED

GVWR: 4,196 KG(9,250 LB)
GAWR-FRONT: KG(4,130 LB)
1,873 KG(4,130 LB)
GAWR-INTERMEDIATE (1): KG() LB)
GAWR-INTERMEDIATE (2): KG() LB)
GAWR-REAR: 2,822 KG(5,780 LB)
VEHICLE TYPE: MPV
1FBAX2Y85PKA86317

SUITABLE TIRE-RIM CHOICE

FRONT:	235/65R16C	TIRES,
16X6.5J	RMS, @	360 KPA
(52	PSI COLD	SINGLE
INTERMEDIATE (1):	RMS, @	TIRES,
(PSI COLD	KPA
INTERMEDIATE (2):	RMS, @	TIRES,
(PSI COLD	KPA
REAR:	235/65R16C	TIRES,
16X6.5J	RMS, @	520 KPA
(74	PSI COLD	SINGLE

Year Make Model	Vehicle #	VIN Number	Cost New		Physical Damage Deductible	Current Mileage	Current Condition		
2006 Ford Econoline Van - 12 passenger	Van 06	1FBNE31L26DA56013	\$16,400		\$500	74768	Van doesn't handle well. Being used as maintenance van--n		
2007 Ford E350 Van Club Wagon - 12 passenger	Van 07	1FBNE31LX7DA91187	\$14,945		\$500	100375	NEEDS REPLACED, Fair, some rust, interior fair		
2012 Dodge Caravan - 7 passenger	Van 12 - SPED	2C4RDGCG7CR406610	\$19,650	Bought used	\$500	174627	NEEDS REPLACED--used specifically for SPED		
2013 Thomas Freightliner Bus - 59 passenger	BUS 13	4UZABRDT5DCBT0219	\$82,000		\$500	95086	Good shape-had new engine put in 2021		
2014 Dodge Caravan Grand SXT - 7 passenger	Van 14 - PHELPS ROUTE	2C4RDGCG7ER352308	\$19,435	Bought used	\$500	105941	NEEDS REPLACED, Okay shape--sustained damage from accident		
2015 Blue Bird Bus - 71 passenger	BUS 15	1BAKGCPA6FF313638	\$80,000	\$25,000 DERA Grant	\$500	67696	Good shape		
2015 Finish Line Car Hauler Trailer		52WBC1629FR009943	\$15,000		\$500		Good shape	- unsure if we have this??? - will ve	
2016 Ford Transit E350 Van - 12 passenger	VAN 16	1FBZX2ZM2GKA76553	\$18,900	Bought used	\$500	91483	REPLACE		
2020 Blue Bird Bus - 65 passenger	BUS 18	1BAKGCSH8LF360217	\$88,345	\$42,000 Volkswagon Grant	\$500	48590	Good shape		
2020 Chevy Express LS Van 12-passenger	VAN 20	1GAWGEFG2L1259684	\$26,836		\$500	63315	REPLACE		
2021 Thomas Freightliner Wheelchair Bus - 52 passenger	BUS 21	4UZABRFC9MCMP4937	\$97,292	\$42,000 Volkswagon Grant	\$500	16885	Excellent shape		
2022 Chrysler Pacifica - 7 passenger	VAN 22	2C4RC1FG6NR196757	\$36,584		\$500	4742	Brand new		
2023 Chrysler Pacifica - 7 Passenger	VAN 23	2C4RC1FG3PR555341	\$38,158		\$500	2696	Brand new		
Grasshopper mower									
Bobcat - ATV									
Vans 12 & 14 need replaced for sped, we also need more large vans/vehicles for route/sports purposes, pacifica's are great vehicles - although they do not handle well in snow/ rain conditions.									

