

Board of Education Study Session
Template
Monday, November 11, 2019 5:30 PM

School District Office 410 South St., Seward,
NE
410 South St
Seward, NE 68434

Agenda

1. Preliminary Procedures
 1. Call meeting to order & announce Open Meetings Act is Posted
 2. Public Notice as publicized per board policy
 3. Roll Call
 1. Action to excuse board members if necessary
2. Possible Discussion Items
 1. Architect Groups
 2. Strategic Plan Work- Strategy 2 Specific Result 4: Provide safe and secure facilities and programs that support ever-changing security standards.
3. Adjournment

Please publish the following legal notice in the November 6, 2019 edition of the Seward County Independent. Thank you.

NOTICE OF SCHOOL BOARD MEETING

The board of education of the School District of Seward will meet in regular session on Monday, November 11, 2019 at 5:30 p.m. for a board study session to be followed by the 7:00 p.m. regular business meeting. The meeting will be held at the Administrative Offices located at 410 South St., Seward, Nebraska. An agenda for the meeting which shall be kept continually current is readily available for public inspection at the Superintendent's Office during normal business hours.

To view the agenda go to <http://SewardPublicSchools.org/> and find the eMeeting link.

PROPOSAL

November 4, 2019

Seward Public Schools

Architectural & Engineering Services

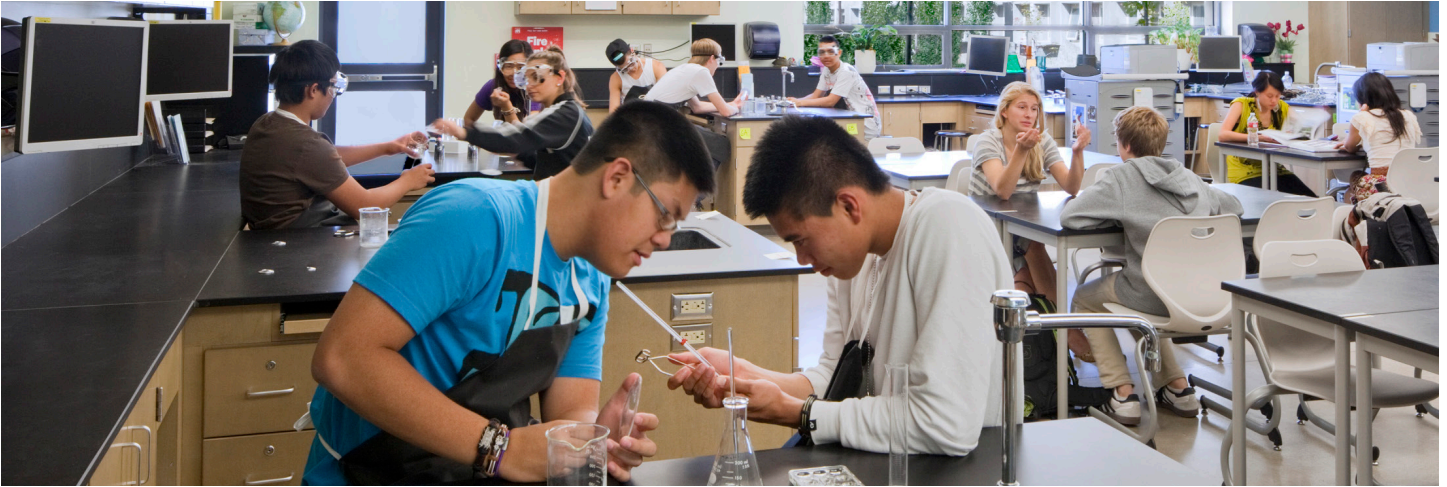


DLR Group

Architecture Engineering Planning Interiors

**6457 Frances Street,
Suite 200
Omaha, NE 68106
402.393.4100**

listen.DESIGN.deliver



Who We Are

DLR Group is a fully integrated design firm.

Our promise is to elevate the human experience through design. This inspires a culture of design and fuels the work we do around the world.

We are 100 percent employee-owned: every employee is literally invested in our clients' success.

At the core of our firm are interdisciplinary employee-owner teams, engaged with all project life-cycle stakeholders. These teams champion true collaboration, open information sharing, shared risk and reward, value-based decision making, and proficient use of technology to elevate design.

Our clients experience this through our service model: **listen.DESIGN.deliver**

DLR Group Services

ARCHITECTURE
ENGINEERING
PLANNING
INTERIORS
ITDG-INNOVATIVE TECHNOLOGY

DESIGN GROUP
LABORATORY PLANNING
LANDSCAPE ARCHITECTURE
MASTER PLANNING
SUSTAINABILITY CONSULTING



DLR Group Educational Experience

More than 50 years of experience in school design and construction.

Work collaboratively to elevate student achievement through design.

We approach each project with a fresh outlook, with no cookie cutter solutions and no preconceived ideas. Imagine us as your instrument to design what your project wants to be, not what we think it should be.

We start every design process by asking questions while meeting with Seward Public Schools team of users, administrators, staff, students, and community to establish your vision for the school, your goals for the project and a thorough understanding of how the built environment can enhance learning and support student achievement. We understand your passion for education and community, as well as the desire to be engaged in the process.

Our interactive design charrette starts the design process. We bring all stakeholders together to dream and explore the possibilities. We will talk and draw, then talk and draw some more. Our only requirement in this charrette process is to bring your ideas and creativity and to express yourself.

Creativity is foremost to the design, but our philosophy also understands that the design must ultimately be measured against the reality of the budget. Our process will always bring us back to budget to assure that what is being envisioned can be built. Often, high expectations have to be tempered by budget reality and DLR Group will work side by side with the District and users to explore ideas to maintain the spirit of the design, achieve the budget, and find creative, affordable ways to bring for to your vision.

We will provide the expertise, quiet leadership, and skills needed to make each project successful. Together, through a collaborative and integrated design process, we will imagine and create environments that stimulate students, inspire community pride and look toward a future that fully realizes every student's potential.

Gretna Public Schools

Gretna, NE

Elementary School Renovation



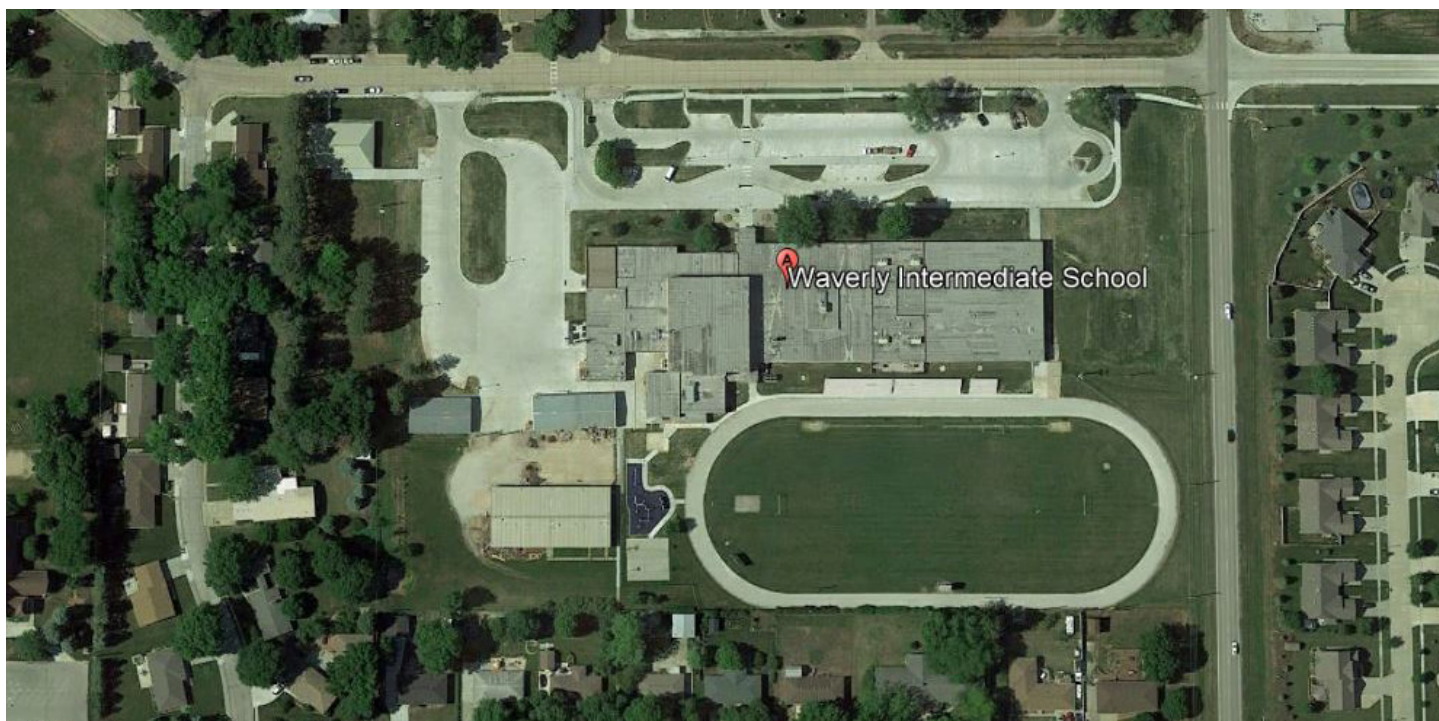
Why we selected this project for you:

- Successful classroom renovation
- Growing school district
- Long-term relationship
- **Contact:** Rich Beran, Superintendent;
rberan@gpsne.org | 402.332.3265

Waverly Public Schools

Waverly, NE

Intermediate School Remodel & Renovation



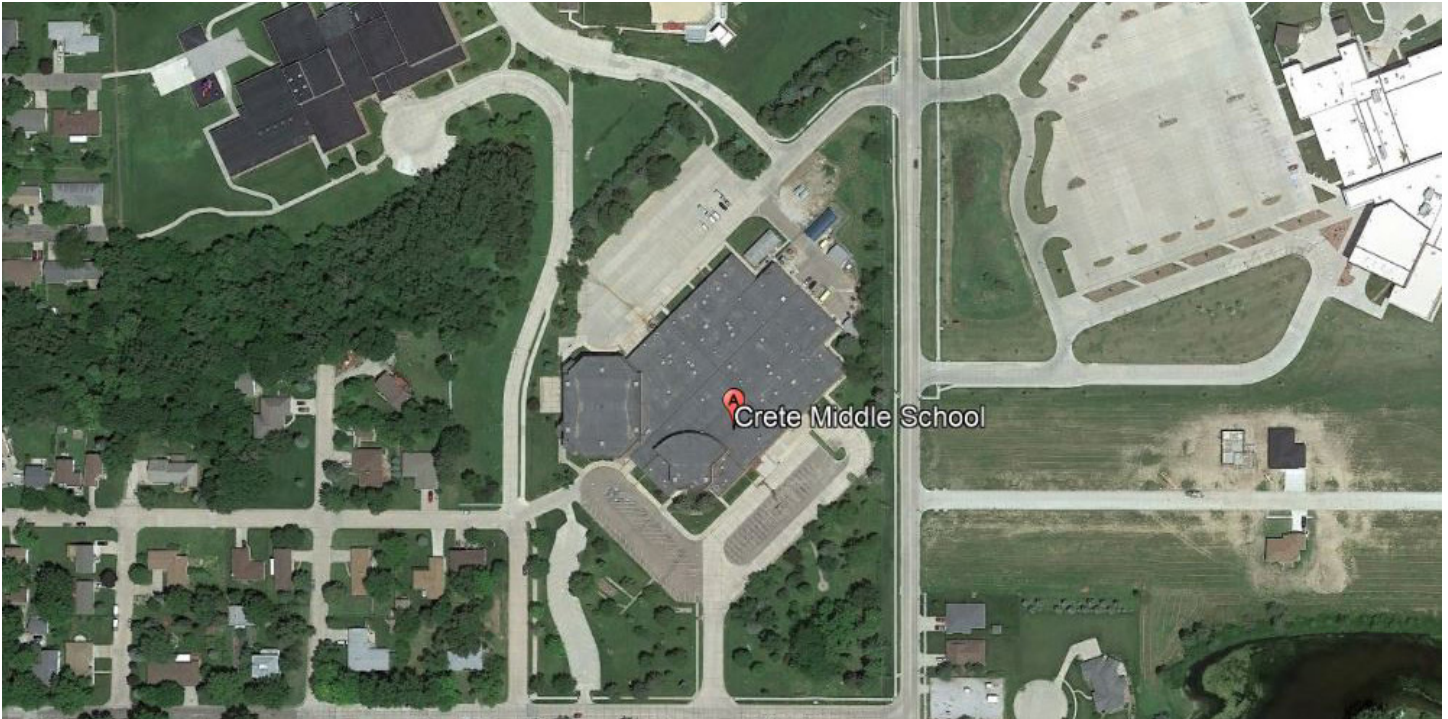
Why we selected this project for you:

- Successful renovation of a similar-sized school
- Growing school district
- **Contact:** Bill Heimann, Former Superintendent; 402.786.2321

Crete Public Schools

Crete, NE

Middle School Renovation



Why we selected this project for you:

- Classroom addition
- Long-term relationship
- Includes six general classrooms, art classroom, communications classroom, student restrooms, and commons
- **Contact:** Kyle McGowan, Former Superintendent;
kyle.mcgowan6561@gmail.com | 402.418.0493

Elkhorn Public Schools

Elkhorn, NE

Middle School Renovation & Addition



Why we selected this project for you:

- Growing school district
- Updated safety and security
- Long-term relationship
- **Contact:** Ryan Lindquist, Exec. Dir. Business Support;
rlindquist@epsne.org | 402.289.2579

Springfield-Platteview Community Schools

Springfield, NE

Westmont Elementary School Renovation



Why we selected this project for you:

- Family & Consumer Science Classrooms
- Successful classroom additions
- Growing school district
- **Contact:** Melissa Hasty, Principal of Westmont Elementary School;
402.895.9602 | mhasty@springfieldplatteview.org

Proposed Project Team Organization

Our team approach is interactive and involves you from the start. Our promise is to **listen.DESIGN.deliver.** Together, we will develop unique solutions that meet the specific needs of Seward Public Schools. Our team of architects and engineers work side-by-side on a daily basis producing integrated designs that support budgets and schedules for innovative design solutions.



Patrick Phelan, LEED AP
Community Engagement Facilitator &
Consensus Building Project Leader
DLR Group

Todd Kwiecinski
Project Manager
DLR Group

Gary Claus, WELL AP, LEED AP
Project Architectural Designer
DLR Group

Lana Bayless, PE
Civil Engineer
DLR Group

Jake McConnell, PE, SE
Structural Engineer
DLR Group

Paul Fisher, PE, LEED AP
Mechanical Engineer
DLR Group

Allie Smith, NCIDQ, IIDA
Interior Designer
DLR Group

Patrick Phelan

LEED AP, Principal, DLR Group

Project Role

Community Engagement Facilitator &
Consensus Building Project Leader



Experience

Adams Central Public Schools; Hastings, NE

Adams Central K-6 Elementary School

Crete Public Schools; Crete, NE

Crete High School

Gretna Public Schools; Gretna, NE

Gretna High School Addition & Renovation

Holdrege Public Schools; Holdrege, NE

Holdrege Elementary School

Norris School District; Firth, NE

Norris Elementary School

Wahoo Public Schools; Wahoo, NE

Wahoo Elementary School

Professional Highlights

Education

Bachelor of Science, Architecture
University of Nebraska-Lincoln

Registration & Licensing

Architect: NE, MN
NCARB Certified

License No.:

A2029

Todd Kwiecinski

DLR Group

Project Role

Project Manager



Experience

Gretna Public Schools; Gretna, NE

Gretna Elementary School Renovation

Adams Central Public Schools; Hastings, NE

Adams Central K-6 Elementary School

Storm Lake Community School District;

Storm Lake, IA

Storm Lake CSD Early Childhood Center

Wood River Public Schools; Wood River, NE

Multiple Additions & Renovation to District

Facilities (work completed at another firm)

Professional Highlights

Education

Master of Project Management / Six Sigma
Villanova University
Bachelor of Arts, Architecture & Urban Plan-
ning
University of Wisconsin

Gary Claus

WELL AP, LEED AP, Associate, DLR Group

Project Role

Project Architectural Designer



Experience

Newman Grove Public Schools; Newman Grove, NE

Newman Grove Public Schools Additions &
Renovations

Lincoln Public Schools; Lincoln, NE

Meadow Lane Elementary School Addition*

Randolph Elementary School Addition & Renovation*

Sioux Falls School District 49-5;

Jefferson High School

Winside Public Schools; Winside, NE

Facility Master Plan

*Notes work completed at another firm

Professional Highlights

Education

Associate Degree, Architectural Technology
Southeast Community College

Lana Bayless

Senior Associate, DLR Group



Experience

Gretna Public Schools; Gretna, NE
Gretna High School Addition
Elkhorn Public Schools; Elkhorn, NE
Elkhorn Middle School Renovation
Crete Public Schools; Crete, NE
Crete High School
Norris Public Schools; Firth, NE
Norris Middle School Renovation
Columbus Public Schools; Columbus, NE
Gretna High School Addition

Project Role

Civil Engineer

Professional Highlights

Education

Master of Architecture
University of Oregon

Bachelor of Science, Civil & Arch. Eng.
University of Wyoming

Registration & Licensing

Civil Engineer: NE, SD, IA, MO, GA, WY, MN
NCEES Certified

License No.:

E8925

Jacob McConnell

PE, SE - Principal, DLR Group



Experience

Elkhorn Public Schools; Elkhorn, NE
Elkhorn Middle School Addition
Bennington Public Schools; Bennington, NE
Bennington Elementary School
Raymond Central Public Schools; Raymond, NE
Raymond Central Jr/Sr HS Remodel
Columbus Public Schools; Columbus, NE
Columbus High School
Oakland-Craig Public Schools; Oakland, NE
Oakland-Craig Elementary School Addition
Gretna Public Schools; Gretna, NE
Gretna High School Addition

Project Role

Structural Engineer

Professional Highlights

Education

Master of Architectural Engineering, University of Nebraska-Lincoln
Bachelor of Science, Architectural Engineering
University of Nebraska-Lincoln

Registration & Licensing

Structural Engineer: IA, MD, MN, NC
NCEES

License No.:

E-14275

Paul Fisher

PE, LEED AP - Senior Associate, DLR Group



Experience

Elkhorn Public Schools; Elkhorn, NE
Elkhorn Middle School Addition
Bennington Public Schools; Bennington, NE
Bennington Elementary School
Gretna Public Schools; Gretna, NE
Gretna High School Addition
Crete Public Schools; Crete, NE
Crete High School
Norris Public Schools; Firth, NE
Norris High School Addition
Ogallala Public Schools; Ogallala, NE
Ogallala ES/MS Addition

Project Role

Mechanical Engineer

Professional Highlights

Education

Bachelor of Science, Mechanical Engineering,
Iowa State University

Registration & Licensing

Mechanical Engineer: NE

License No.:

E-12412

Allie Smith

NCIDQ, IIDA, Associate, DLR Group

Project Role

Interior Designer



Experience

Sioux Falls School District 49-5; Sioux Falls, SD

Jefferson High School

Elkhorn Public Schools; Elkhorn, NE

Elkhorn North High School

Omaha Public Schools; Omaha, NE

OPS 60th & L High School

Professional Highlights

Education

Bachelor of Science, Interior Design

University of Nebraska-Lincoln

NCIDQ No.:

35194

Licensure in the State of Nebraska

Licensure numbers for each of the proposed project team members are located on the resumes portion of this proposal, pages 16 through 18. Additional information will be made available upon request.





References

DLR Group prides ourselves on our ability to create **long-lasting relationships** with our clients. They can share with you our consistency and commitment to the success of their projects and the service we have provided.

Adams Central Public Schools | Hastings, NE

Shawn Scott, Superintendent;
shawn.scott@adams-central.org | 402.463.3285
Dave Johnson, School Board President;
dave.johnson@adams-central.org | 402.468.3294

Bennington Public Schools | Bennington, NE

Terry Haack, Superintendent;
thaack@bennps.org | 402.238.3044
Matthew Wickham, School Board Member;
medwickham1958@gmail.com | 402.238.9944

Columbus Public Schools | Columbus, NE

Troy Loeffelholz, Superintendent;
loeffelholzt@discoverers.org | 402.563.7000
Theresa Seipel, School Board President;
seipelt@discoverers.org | 402.562.8193

Crete Public Schools | Crete, NE

Dr. Mike Waters, Superintendent;
mike.waters@creteschools.org | 402.826.5855
Kyle McGowan, Former Superintendent;
kyle.mcgowan6561@gmail.com | 402.826.5855
Bill Lorenz, School Board Member; 402.826.0457

DC West Community Schools | Valley, NE

Melissa Polonicic, Superintendent;
mpolonicic@dcwest.org | 402.359.2583

Leigh Public Schools | Leigh, NE

Stephanie Petersen, Superintendent
spetersen@leigh.esu7.org | 402.487.3301
Kamin Held, School Board President;
Kamin_Held@bd.com | 402.276.1765

Gretna Public Schools | Gretna, NE

Dr. Kevin Riley, Superintendent;
kriley@gpsne.org | 402.332.3265
Dave Gulizia, School Board Member;
dave@gulizia.omhcoxmail.com | 402.616.2657

Newman Grove Public Schools | Norris, NE

Mikal Shalikow, Superintendent;
mikal.shalikow@ngpublicschools.com | 402.447.6294

Norris Public Schools | Norris, NE

John Skretta, Former Superintendent;
john.skretta@nsdtitans.org | 402.791.0007

Seward Public Schools | Seward, NE

Greg Barnes, Superintendent;
greg.barnes@connectseward.org | 402.643.2941

Springfield-Platteview Community Schools | Springfield, NE

Brett Richards, Superintendent;
brichards@springfieldplatteview.org | 402.592.1300
Melissa Hasty, Principal of Westmont Elementary School;
402.895.9602 | mhasty@springfieldplatteview.org

Wahoo Public Schools | Wahoo, NE

Brandon Lavaley, Superintendent;
blavaley@wahoowarriors.org | 402.443.4332
Rob Brigham, School Board Member;
rbrigham@jeo.com | 402.443.4661

Westside Community Schools | Omaha, NE

Dawn Nizzi, Westside CAPS Program Director;
nizzi.dawn@westside66.net | 402.408.8447
Kris Karnes, School Board Member;
karnes.kris@westside66.net



Proposed Fee

DLR Group’s commitment to fiscal responsibility has been established by our history and transparent process of illustrating comprehensive budgets with fixed fee compensation. Our firm is prepared to develop a comprehensive professional service and compensation arrangement fully responsive to the needs of the Seward Public Schools.

A stipulated fixed fee amount would be determined upon approval of design development documents, based upon a **percentage of the approved design development budget cost of construction based on the chart below:**

Remodeling / Renovations / Additions

| Construction Cost | Fees |
|-------------------------|------|
| \$100,000 - \$250,000 | 13% |
| \$250,001 - \$500,000 | 12% |
| \$500,001 - \$750,000 | 11% |
| \$750,001 - \$1,000,000 | 10% |
| Over \$1,000,000 | 9% |



DLR Group

Architecture Engineering Planning Interiors

6457 Frances Street,
Suite 200
Omaha, NE 68106
402.393.4100

listen.DESIGN.deliver



Response to Request for Qualifications for Architectural Services

SEWARD PUBLIC SCHOOL DISTRICT

Seward, NE | November 4, 2019



ICON
ARCHITECTURAL GROUP

WHAT'S INSIDE

I Cover Letter

II Firm Overview

III Project Experience

IV Project Team

V Project Approach

VI Additional Info

VII References

November 4, 2019

Seward Public School District
Attn: Dr. Josh Fields
410 South Street
Seward, NE 68434

RE: Request for Qualifications Architectural and Engineering Services – Seward High School Renovations

Dear Dr. Fields,

ICON Architectural Group is pleased to present our qualifications for your upcoming renovations to Seward High School. ICON is a group of 70+ Midwestern professionals committed to the excellence of our profession and dedicated to delivering projects that our clients can be proud of. We have recently opened a new office in Lincoln, which is led by two University of Nebraska graduates. We look forward to better serving the community we call home. Our size, organizational structure, team approach to projects and the culture developed at ICON positions us to provide a high level of service to the School District of Seward.

Our team is different because...

UNMATCHED EXPERIENCE

Although our firm is new to Nebraska, we are not new to K-12 school projects. Having worked on more than 100 K-12 school projects, our team of design professionals has an extensive resume on projects similar in size and scope. We have learned something new on every project and look forward to continuing to learn with each new project we work on. We are committed to delivering projects that meet the needs of the district and assist in fostering the success of both teachers and students.

PROJECT SAVINGS

From design to construction, our process allows us to deliver a project in the most economical and efficient means possible. We continually look for innovative ideas and delivery methods that will enhance the project without sacrificing quality, design or efficiency. These cost savings are passed down to the School District in overall project costs and long-term operational savings.

The best award that we can receive is a client that is satisfied at the end of a successful project. The majority of our educational facility projects come from repeat clients. This is a testament to our ability to deliver projects that fit each client's needs. We encourage you to reach out to our references to hear, firsthand, their experiences working with ICON.

We thank you for your consideration and would welcome an interview for this project, with the opportunity to further explain our firm's experience and our unique approach.



Mitzel respectfully,

Todd D. Mitzel, AIA
todd@iconarchitects.com
(701) 772-4266



FIRM OVERVIEW

ICON Architectural Group was founded in 2002 and has established itself as one of the mainstay architectural firms in the Upper Midwest. Our vision is to provide clients with innovative design and effective building solutions. Our success hinges on the success of our clients.

Our relationships with clients and the individualized attention throughout the planning and design process is key to ICON's success. Our approach is to listen, understand, communicate, and suggest. At ICON, we take our clients' project goals, budget and schedule seriously. With the ICON experience, clients receive continuous personal service from the programming phase through occupancy.

7

Offices

66

Employees

29

Architectural
Team Members

3

Structural
Engineers

6

Construction
Support Team
Members

3

Interior
Designers

EXPERIENCE IN

EDUCATION

Our firm continues to be a leader in the region for educational facility planning and design. Our goal when working on education projects is to create learning environments that fully integrate the mission of the district, develop instructional spaces that enhance and enrich learning opportunities, and promote the overall quality of the student learning experience. As education evolves, so does the design of the facilities. Our goal is to use the knowledge we have developed on over 100 education projects to maximize every dollar spent.



THE AMERICAN INSTITUTE
OF ARCHITECTS



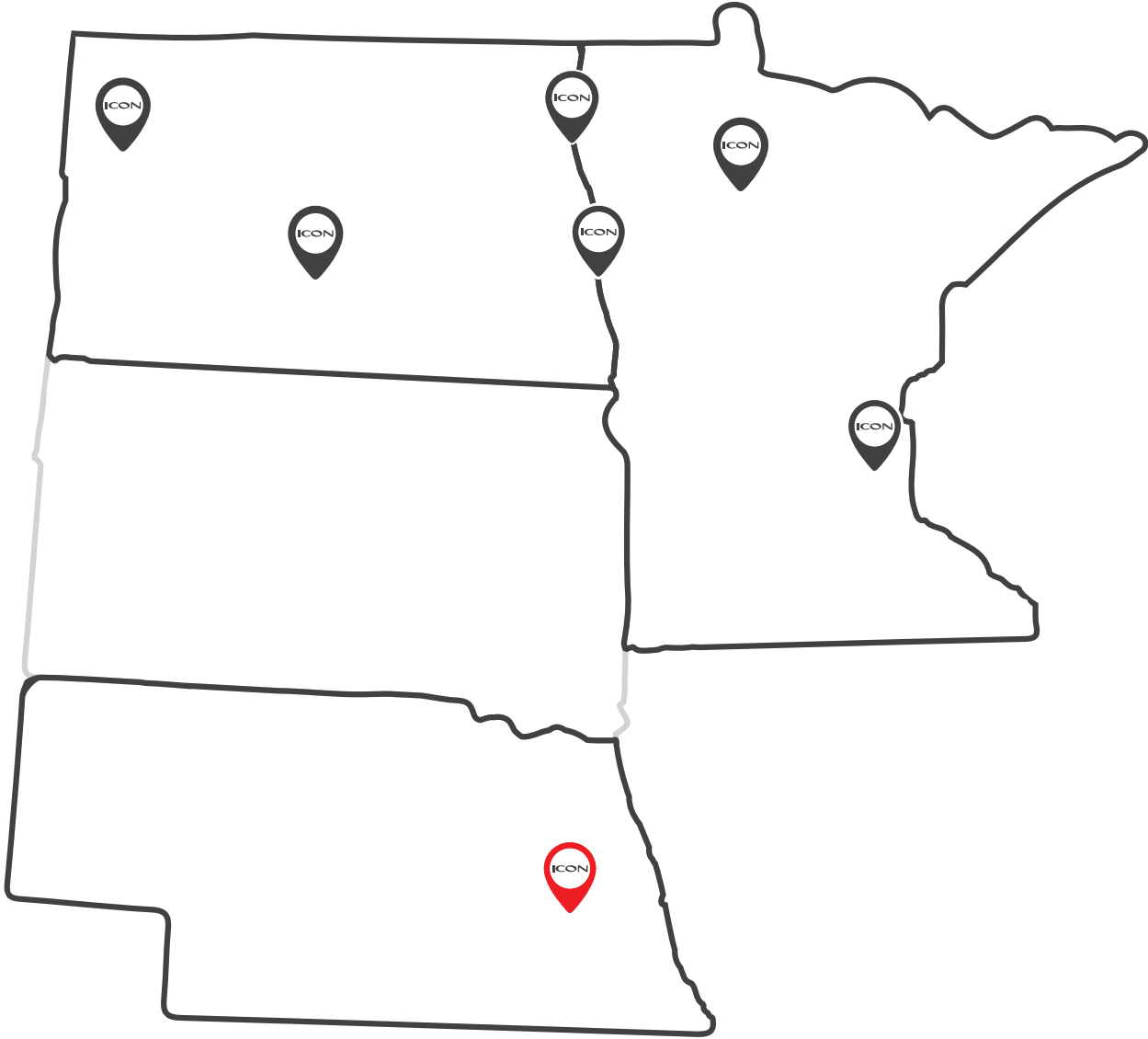
ASCE
AMERICAN SOCIETY OF CIVIL ENGINEERS



Construction Specifications Institute

NCARB
National Council of
Architectural Registration
Boards





7 OFFICES

NORTH DAKOTA | Grand Forks. West Fargo. Mandan. Watford City.
MINNESOTA | Bemidji. Minneapolis.
NEBRASKA | **Lincoln.**



PROJECT EXPERIENCE

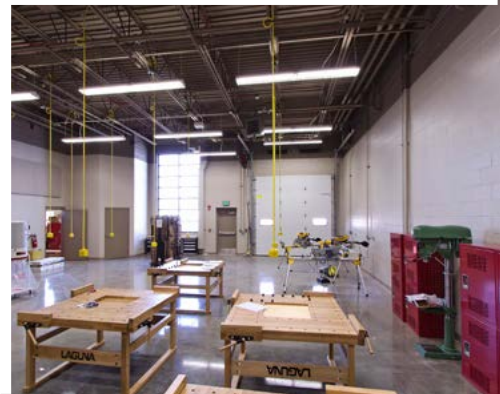
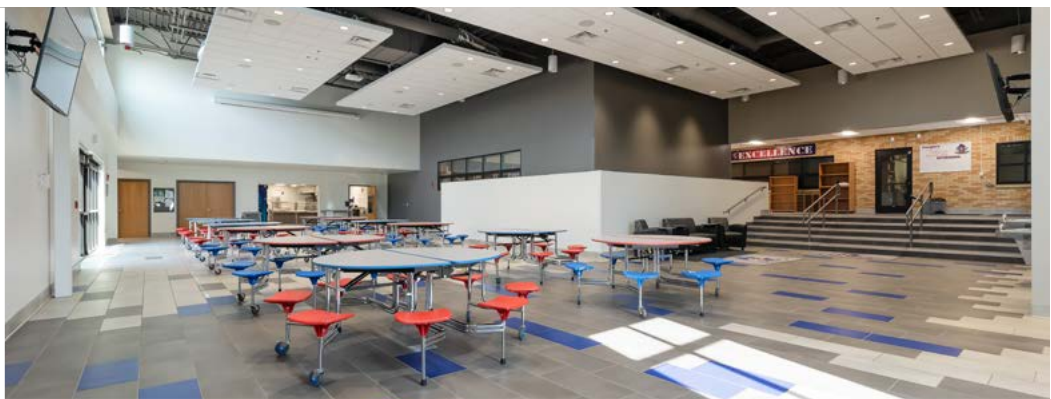


EXPERIENCED
EDUCATION
DESIGN
PROFESSIONALS



100+
K-12
COMPLETED
PROJECTS







THE ICON TEAM HAS WORKED ON OVER 100 K-12 SCHOOL PROJECTS

We have learned something new on every project and look forward to continuing to learn with each new project we work on. We are committed to delivering schools that meet the needs of the district and assist in fostering the success of both teachers and students.

K-12 EXPERIENCE

SIMILAR PROJECTS



- 2019** New Salem Public Schools Addition Study
- 2019** Mandan Public Schools High School Educational Adequacy Assessment
- 2019** Mandan Public Schools Red Trail Elementary Addition
- 2018** Mandan Public Schools High School Structural Assessment & Repairs
- 2018** Ray Nesson Public Schools Addition / Renovation
- 2018** Killdeer Masterplan and Facility Study
- 2018** Beulah High School Addition / Renovation
- 2018** Cavalier Masterplan and Facility Study
- 2018** Sacred Heart Elementary Addition
- 2018** Mandan Public School All Seasons Arena Renovation
- 2018** Maple Valley Public School Addition / Renovation
- 2017** Hatton Public School Facility Assessment and Masterplan
- 2017** Northwood School Addition and Renovation Study
- 2017** Beulah Public School Mechanical and Building Study
- 2017** McKenzie Public School Elementary Renovation
- 2016** Emerado K-8 Addition and Renovation
- 2015** Nedrose School District New K-12 School
- 2015** Mayville School District Feasibility Study
- 2015** Max School District K-12 Mechanical and Electrical Upgrade & Renovation
- 2015** Hillsboro School District New Sports Fields
- 2015** Hillsboro School District Expansion of Sports Center
- 2015** Hillsboro School District Elementary Addition
- 2015** Grafton School District New Middle School & Elementary Addition/Renovation
- 2015** Dakota Prairie K-12 Addition
- 2015** Westhope School District Addition and Renovation K-12
- 2013** New School District # 8 Master Plan
- 2012 2015** Devils Lake School District Renovation Prairie View Elementary
- 2012 2014** Devil Lake Renovation Minnie H Elementary School
- 2011** McKenzie County School District Watford City Elementary Addition and Renovation
- 2010** McKenzie County School District Masterplan
- 2010** Langdon School District Exterior Renovation
- 2010** Grand Forks Public Schools Schroeder Middle School
- 2010** Devils Lake Middle School Roofing Renovation
- 2009** Langdon School District School Consolidation Feasibility Study
- 2009** Hillsboro School District High School Science Classroom Renovation
- 2009** Harvey School Consolidation Feasibility Study
- 2009** Grand Forks Public Schools Lake Agassiz Elementary Addition and Renovation
- 2009** Devils Lake School District Sweetwater Elementary Addition and Renovation
- 2008** Grand Forks Public Schools Viking Elementary Renovation
- 2007** Northwood School District New K-12 School (FEMA)
- 2004** Northwood School District K-12 School Addition
- 2003** Grafton School District Locker Room Remodel
- 2003** Central Valley School District Gym/Locker Room Addition
- 2002** Hillsboro School District Multipurpose Addition



“

ICON has listened to our needs and exceeded them. I have been recommending them to all of the schools that are looking at school construction from classroom to sports complexes.

”

PAULA SUDA
Superintendent
Hillsboro Public School District

K-12 EXPERIENCE

WITHIN 5 YEARS

MANDAN PUBLIC SCHOOLS RED TRAIL ELEMENTARY ADDITION

Mandan, ND

RAY NESSON PUBLIC SCHOOLS ADDITION / RENOVATION

Ray, ND

KILLDEER MASTERPLAN AND FACILITY STUDY

Killdeer, ND

BEULAH HIGH SCHOOL ADDITION / RENOVATION

Beulah, ND

CAVALIER MASTERPLAN AND FACILITY STUDY

Cavalier, ND

SACRED HEART ELEMENTARY ADDITION

Maple Valley, ND

MAPLE VALLEY PUBLIC SCHOOL ADDITION / RENOVATION

Maple Valley, ND

HATTON PUBLIC SCHOOL FACILITY ASSESSMENT AND MASTERPLAN

Hatton, ND

NORTHWOOD SCHOOL ADDITION AND RENOVATION

Northwood, ND

BEULAH PUBLIC SCHOOL MECHANICAL AND BUILDING STUDY

Beulah, ND

MCKENZIE PUBLIC SCHOOL ELEMENTARY RENOVATION

Watford City, ND

EMERADO K-8 ADDITION AND RENOVATION

Emerado, ND

NEDROSE SCHOOL DISTRICT-NEW K-12 SCHOOL

Minot, ND



GRAFTON SCHOOL DISTRICT NEW MIDDLE SCHOOL AND ELEMENTARY ADDITION

GRAFTON, ND

Grafton Public School District passed a bond referendum to relocate and attach the middle school and the elementary school to the existing high school to create operational and safety efficiencies. ICON assisted in getting the referendum passed by helping develop a project website, creating mailers and brochures, and other informational resources for the project. The addition for the middle school is 80,000 s.f and includes 29 new classrooms. A small addition to the elementary school was also added which includes nine new classrooms to accommodate for growing enrollment. Overall, the addition includes classroom space for 350-400 students. A new 400-seat auditorium, multi-purpose gym, and new consolidated administrative spaces were also added. Renovations total 20,000 s.f. and included a required upgrade and addition of a sprinkler system throughout the building for more up to date safety measures.

KEY FACTS

- 9 new classrooms added to elementary school for increasing Pre-K and kindergarten grade levels
- 29 new classrooms for the middle school
- Commons area and media center to accommodate for the middle school students
- Addition of a 400-seat auditorium for use by the school and community
- Addition to kitchen
- 80,000 s.f. addition
- 20,000 s.f. renovation

Client: Grafton Public Schools

Date: 2016

Cost: \$17.5 Million

Reference: Jack Maus

Former Superintendent

(701) 257-6424

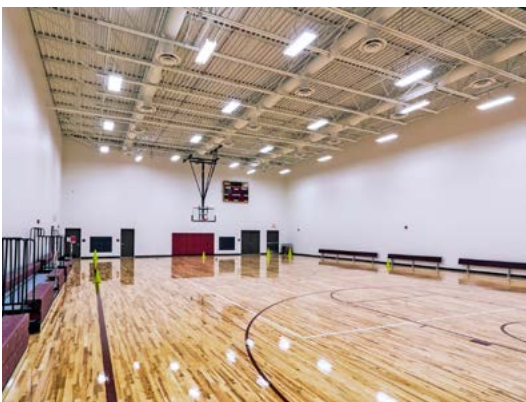
K-12 Enrollment **979** Students



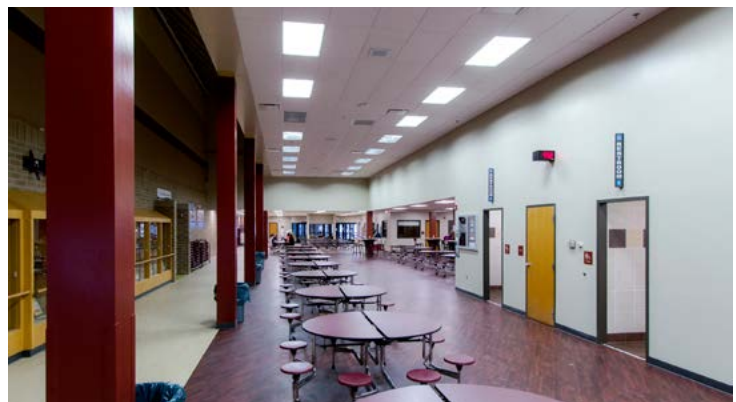
Auditorium



Commons



Gymnasium



Commons



NEDROSE SCHOOL DISTRICT NEW K-12 SCHOOL

MINOT, ND

The new Nedrose K-12 School is a school facility located outside of Minot, ND. The project included 22 classrooms designed for 21st Century learning principles, industrial technology, science labs, and music classes. Other spaces include a commons area, two full sized gymnasiums, a library, and administrative offices. The building also includes open and functional multi-use spaces and features natural lighting throughout. The new school is designed to meet a 500-student enrollment capacity and to expand without disruption. The site plan also includes football fields, baseball fields, and an adjacent park.

KEY FACTS

- 22 classrooms
- Two full size gymnasiums
- Kitchen
- Commons area
- Outdoor patio
- Administrative areas
- Divided into two wings for middle school and high school and elementary
- Master Planned with future expansion in mind
- Site planning to work with future park/school needs
- 91,500 s.f. new construction

Client: Nedrose School District

Date: 2016

Cost: \$24 million

Reference: Charles Miller

Superintendent

(701) 838-5552

K-12 Enrollment **456** Students



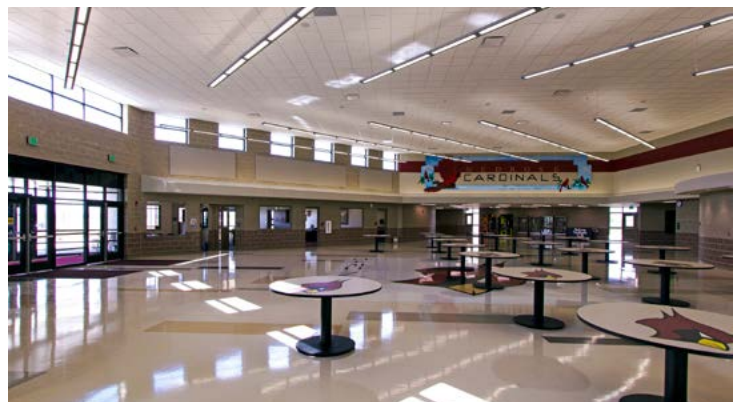
Exterior



Exercise Room



Shop Classroom



Commons



NORTHWOOD SCHOOL DISTRICT NEW K-12 SCHOOL

NORTHWOOD, ND

In late summer of 2007, an EF4 tornado struck Northwood, ND causing total destruction of the town's existing K-12 school. ICON responded immediately with team members to assess damage and begin strategic planning with the school district. ICON worked with the school district to analyze new school options and worked to develop a masterplan to rebuild a new K-12 school. Because ICON understood the importance of getting the school back up and running as soon as possible, we coordinated multiple bid packages and coordinated with FEMA to develop damage assessment reports to maximize the school district's insurance claims.

KEY FACTS

- Divided into two wings for K-8 and high school
- Designed with future expansion in mind
- Site planning to work with future park/school needs
- 95,000 s.f.
- Designed with LEED principles in mind
 - Sustainable design principles include geothermal heating
- Capable of increasing enrollment by 100% without expansion
- Two gymnasiums
 - Practice gym
 - Game/event gym

Client: Northwood Public Schools

Date: 2009

Cost: \$16 Million

Reference: Kevin Cole

Former Superintendent

(605) 823-4484

K-12 Enrollment **315** Students



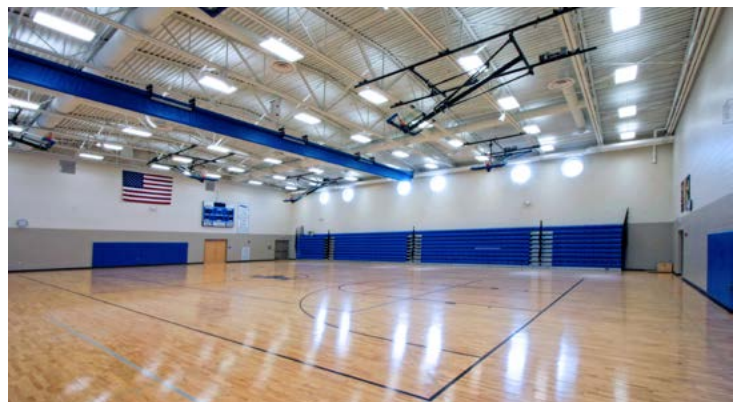
Collaboration Classrooms



Commons



Entry



Gymnasium



WATFORD CITY ELEMENTARY SCHOOL ADDITION AND RENOVATION

WATFORD CITY, ND

When the oil boom in western North Dakota dramatically increased Watford City's student enrollment, the McKenzie County School District chose ICON to lead the design of an addition and renovation of its K-5 Elementary School. Renovations included asbestos abatement of the existing facility, ADA and HVAC code compliance upgrades, and updating finishes to provide a consistent look throughout the entire building. A new gymnasium, a library, a computer lab, music rooms, and four classrooms were also added as part of the new construction. The design focused on bringing natural light into the building. This is illustrated in the new gymnasium, school entrances, and throughout the library where large expanses of glass overlook the adjacent football field.

KEY FACTS

- K-5 Elementary School
- Increased student capacity to 650 students
- Utilized CMAR method
- Natural light at key spaces
- 31,600 s.f. addition
- 44,000 s.f. renovation

Client: McKenzie County School District #1

Date: 2013

Cost: \$11.4 Million

Reference: Bradley Foss

Principal

(701) 444-2985

K-12 Enrollment **510** Students



Gymnasium Entry



Entry



Food Court



Gymnasium



SACRED HEART ELEMENTARY SCHOOL ADDITION

EAST GRAND FORKS, MN

Sacred Heart School is a K-12 Catholic School located in East Grand Forks, Minnesota. Increased enrollment over the last several years has created the need for additional classroom space. The addition will add two 4th grade classrooms, two 5th grade classrooms, two 6th grade classrooms, and one pre-school classroom. At Sacred Heart, Faith is very important, so it was vital that we implemented symbols of the Catholic Faith in our design. Examples include the large cross glass curtain wall that illuminates the commons area, and crosses in the classroom windows. Space for murals and other walls that showcase the liturgical art will also be included.

The new addition will be constructed to match the existing exterior finishes and key elements of the interior finishes including terrazzo floors and burnished block walls. While designing the addition, consideration was given to maximize the site to allow for the outdoor playground to remain. The playground area was reconfigured and updated with new equipment and a rubber tile surface.

KEY FACTS

- Single story addition
- 12,428 s.f.
- 7 new classrooms
- Commons area
- Renovated playground
- Symbols of Catholic Faith in design
- Can offer two sections of each grade K-6

Client: Sacred Heart School

Date: 2019

Cost: \$3 Million

Reference: Carl Adolphson

President

(218) 773-0877

K-12 Enrollment

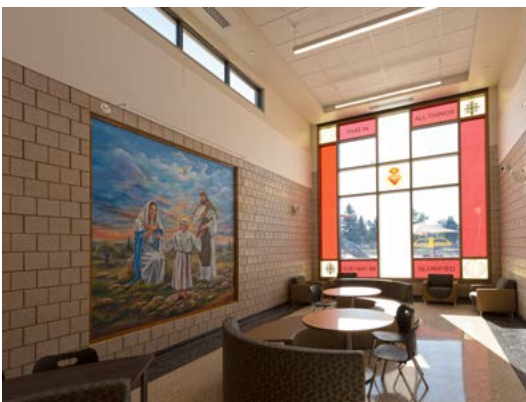
438 Students



Addition Rendering



Commons Area



Stained Glass Feature



Classroom



MAPLE VALLEY PUBLIC SCHOOL ADDITION AND RENOVATION

TOWER CITY, ND

Maple Valley Public School decided to consolidate two elementary schools into one addition to the existing high school. ICON was selected to lead the project. The project includes a new K-6 elementary addition to the high school, a new library, a new kitchen, and a commons area. An upgraded fire sprinkler system was also installed throughout the building.

KEY FACTS

- Consolidation of two elementary schools to one addition to the existing high school
- New K-6
- New library
- New kitchen
- Commons area
- Upgraded fire sprinkler system

Client: Maple Valley School District

Date: 2018

Cost: \$4 Million

Reference: Brian Wolf

Superintendent

(701) 749-2570

K-12 Enrollment **249** Students



Exterior



Commons Area



Lunch Room



Classroom



RAY-NESSON PUBLIC SCHOOL ADDITION AND RENOVATION

RAY, ND

The Ray-Nesson Public School District was given a \$10MM endowment and wanted to address increasing enrollment and outdated facilities and improve VoAg/CTE spaces that were damaged by a small fire. ICON was chosen to lead the design and due to additional project scope, a pre-referendum process as well. The community approved the bond referendum by 92% which allowed the school district to complete the project and have potential access to state funds and low interest loans.

Lack of space on the existing site as well as site grade presented unique challenges for ICON's team as to where a potential addition could be located. In the existing school building, previous additions were not accessible from the existing lower gymnasium level or the new gymnasium mezzanine and weight room areas. To address these issues, a two-story addition was placed at the Northwest portion of the site which allowed for the utilization of the existing exterior mechanical equipment. An elevator was added for access to the existing gym and all levels of the addition. Included in the addition is a large VoAg/CTE space, seven classrooms, and the remaining space was shelled out for the future construction of additional

classrooms and supporting spaces including a new science classroom/laboratory, restrooms, and a teachers' lounge. Also included in the project was a one-story gymnasium storage and entrance addition which provides access to the original gymnasium level. The existing VoAg/CTE space was renovated into an ITV classroom which allowed for expansion of the commons area with that area being able to be closed off as an additional classroom when needed.

Updates to the existing site included closing off one block of Second Ave W and connecting it to the South to provide space for new playground areas and additional parking, and grading updates to the North to help route water around the existing school.

Client: Ray-Nesson Public School District

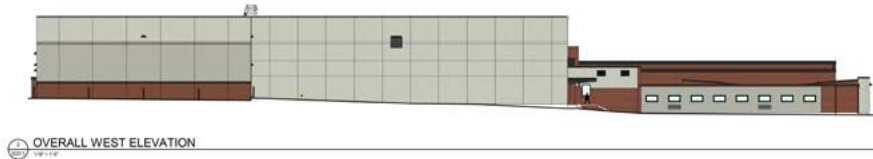
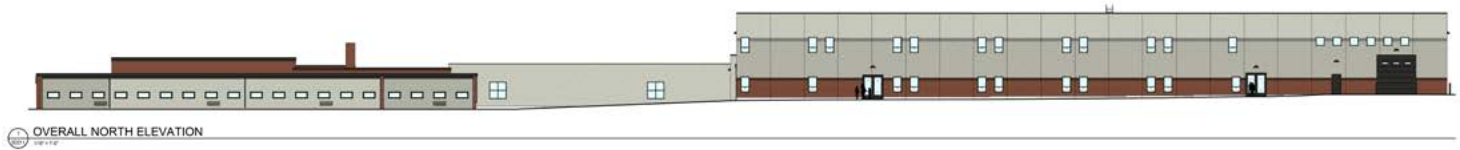
Date: 2020

Cost: \$9 Million

Reference: Ben Schafer

Superintendent

(701) 568-3301



KEY FACTS

- 2,000 s.f. renovation of commons space and VoAg/ CTE spaces
- 34,820 s.f. two story addition
 - Completion of the first floor
 - 3,500 s.f. CTE Shop
 - 7 Classrooms including a new band classroom, teachers' lounge, principal's office
 - Restrooms
 - Second floor containing a mechanical room, storage for the existing weight room
- 1,203 s.f. ADA compliant gymnasium entry and storage addition
- Lighting updates to replace outdated fixtures
- Site updates to address past water drainage issues
- Addition of fire sprinkler system for existing school
- Updates to exterior finishes
- Fenced in grass playground area
- Paved playground area with basketball court
 - Also provides 42 parking stalls for after-hours events
- 66 stall paved parking Lot





HILLSBORO SCHOOL DISTRICT

HILLSBORO, ND

ATHLETICS COMPLEX

Date: 2016 Cost: \$1.5 Million

Construction of new 400 meters running track, 750 person grandstands, concessions stand with handicap accessible restrooms, site fencing and site regrading. New football field/ track lighting provided and installed by owner. Construction scheduled for spring of 2016. Anticipated to be completed November of 2016.

FITNESS ADDITION

Date: 2015 Cost: \$2 Million

6,300 SF fitness center addition to elementary school shared by both the school and public. Construction time spanned over 8 months with completion of classroom space finished during summer for use that upcoming school year.

ELEMENTARY SCHOOL ADDITION

Date: 2015 Cost: \$2 Million

3,000 SF of added classroom space comprised of 3 classrooms and 2 speech therapy rooms.

MULTIPURPOSE ADDITION

Date: 2003 Cost: \$2.8 Million

Bond passed with support from 74% of voters. Accelerated construction schedule to conform with school district requirements. Multiple bid packages delivery method. Completed 2 months ahead of original schedule. The addition includes: Dual Court Gymnasium, Wrestling Mezzanine, Adaptable Locker Rooms, Community Room and Community Fitness Area

Client: Hillsboro Public Schools

Location: Hillsboro, ND

Reference: Paula Pederson
Superintendent
(701) 636-4360

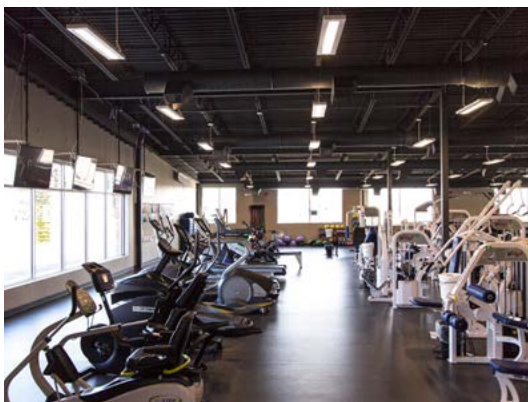
Mike Bitz
Former Superintendent
(701) 751-6500



Multipurpose Addition



Overall Athletics Complex



Fitness Room



Fitness Addition Exterior



NORTHWOOD PUBLIC SCHOOL ADDITION

NORTHWOOD, ND

Due to increasing enrollment, Northwood Public School needed more classroom space to accommodate the growing number of students and staff. The school board also saw a need for an auditorium to be used by both the school and the community for a variety of events. As the architect of the existing school that was built in 2009 following a devastating tornado, ICON was called upon again to provide architectural services to Northwood Public School. In fall of 2018, with ICON's leadership and guidance, the community approved the bond referendum by 75% to move forward with the project. ICON's design features additional classroom space in the elementary wing to include space for Title I, Special Education, Music Instruction, and general classrooms. The auditorium space includes seating for 380 occupants, theatre production support space, audio and lighting control rooms, a welcoming entry lobby, and dedicated men's and women's restrooms. The project also includes renovation work in the existing music room to provide additional storage space. Construction started on the project in the summer of 2019 and is expected to be complete for the start of the 2020/2021 school year.

KEY FACTS

- Addition of a 380-seat auditorium with Theatre Control Rooms, Entry Lobby, and Restrooms
- Addition of 5 classrooms

Client: Northwood Public School District

Date: 2020

Cost: \$5.8 Million

Reference: Shane Azure

Superintendent

(701) 587-5221



EMERADO K-8 SCHOOL ADDITION AND RENOVATION

EMERADO, ND

Emerado is a farming and military community near the Grand Forks Air Force base. With an anticipated increase in enrollment due to the Grand Sky Mission at the Air Force base, Emerado elementary school was running out of space. The project added a Pre-K classroom, a music room, and a student drop-off lane. ICON also renovated four existing classrooms and the restrooms.

KEY FACTS

- Renovation of four existing classrooms and restrooms
- Addition of one Pre-K classroom
- Addition of a music room
- Addition of a student drop-off lane
- Fire sprinklers upgrade

Client: Emerado Elementary School District

Location: Emerado, ND

Date: 2017

Cost: \$1.1 Million

Reference: Sara Bilden

Superintendent/Principal

(701) 785-2126



HATTON PUBLIC SCHOOL ADDITION AND RENOVATION

HATTON, ND

Hatton Public School in Hatton, ND needed updates due to aging facilities and deficient learning spaces. About half of the building is approximately 100 years old. Problems that the existing building faced due to outdated facilities include: lack of adequate space to accommodate multiple programs/functions; shortage of physical education, assembly, and community fitness space; indoor air quality and lighting; and inaccessibility for special education students. The outdated building had also proved ineffective when it comes to attracting and retaining staff and students.

ICON was chosen to address the needs of the school district and design a more updated building that fosters student learning and success. Additions will include four new classrooms, a new music room, a new gymnasium, and a new cafeteria/kitchen. The updated school will also feature an upgraded security system and fire sprinkler system throughout the entire building.

KEY FACTS

- Four new classrooms
- New music-room
- New gymnasium
- New cafeteria/kitchen
- Accessible special education programs at ground level
- New main entrance for better security
- Electronic security monitoring at each exterior entrance
- Fire sprinklers throughout entire building

Client: Hatton School District

Date: 2019

Cost: \$6.3 Million

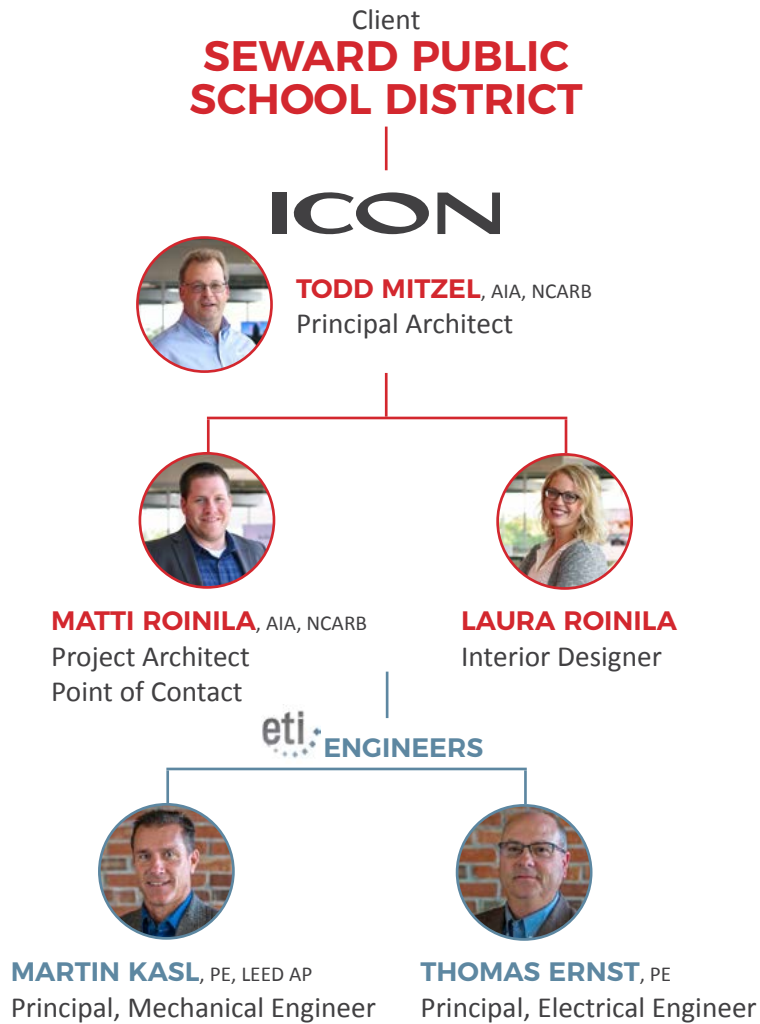
Reference: Kevin Rogers

Superintendent

(701) 543-3455

K-12 Enrollment **181** Students

PROJECT TEAM



PROJECT TEAM

We have a committed staff of professional individuals ready to go to work on your project. Our staff is trained in the latest system technologies, design techniques, and construction administration practices. ICON has solid working relationships with local and regional engineers and specialty consultants.

PROJECT TEAM MANAGEMENT

The Project Architect will be the main point of contact for communication between the Owner's building committee and the design team made up of different consultants. This streamlined means of communication helps facilitate collaborative building between the multiple project users and the team of consultants.

SPECIALTY CONSULTANTS / ENGINEERS

ICON typically engages specialty consultants as needed for projects. This decision is made between the Owner and ICON once the project requirements and specialty requirements are easily understood by all parties. ICON will be the main source of contact throughout the project.



Engineering Technologies Inc

Mechanical & Electrical Building Solutions
InnovativeComprehensiveProven



CONSULTING

Since 1972, ETI's comprehensive engineering solutions have resulted in a notable record of successful projects and repeat clients. From innovative new designs to challenging renovations, we've mastered the details to create building success.

PROJECT PLANNING

Our detailed feasibility studies and pre-design planning maximize energy efficiency, sustainability, and adaptability. From plant optimization to system life-cycle cost analysis, our consulting services enhance project outcomes.

CONSTRUCTION-PHASE SERVICES AND COMMISSIONING

Follow-through, attention to detail, and operational review complete ETI's focus on quality. ETI's project management, construction administration, and commissioning services assure smooth project completion and owner satisfaction.

STAFF

ETI consists of a staff of 35, including: mechanical engineers, electrical engineers, architectural engineers, LEED Accredited Professionals, telecommunications designers, a Registered Communications Distribution Designer (RCDD), a Commissioning Agent (CxA), Certified Lighting Designers (LC), technicians, a construction manager and administrative staff.

PRINCIPALS

Martin D. Kasl, PE, LEED AP, Mechanical Engineer
Daniel W. Schinstock, PE, Mechanical Engineer
Daniel L. Thompson, PE, Mechanical Engineer
Thomas A. Ernst, PE, Electrical Engineer
Derek R Kotschwar, PE, CxA, LEED AP, Mechanical Engineer
Shane M. Hoss, PE, RCDD, Architectural Engineer - Electrical
Justin L. Veik, PE, LEED AP, Architectural Engineer - Mechanical

ASSOCIATES

Tony L. Dupsky, PE, Architectural Engineer - Mechanical
Joel C. Thieman, Mechanical Designer
Bill J. Fleischman, Electrical Designer
Cindy Wood, Finance Manager

InnovativeComprehensiveProven

825 M Street, Suite 200 | Lincoln, NE 68508 | P 402.476.1273 | F 402.476.1274
1111 N. 13th Street, Suite 216 | Omaha, NE 68102 | P 402.330.2772 | F 402.330.2630
inform@eti-engineers.com | www.eti-engineers.com



Engineering Technologies Inc
Mechanical & Electrical Building Solutions

Recent School Project Experience

Adams Middle School Cooling Tower Replacement, North Platte, NE

Ainsworth School Addition, Ainsworth, NE

Beatrice High & Middle Schools Misc. Electrical, Beatrice, NE

Bellevue Public Schools Wireless Network Upgrade, Bellevue, NE

Bellevue West High School Multi-zone Replacement, Bellevue, NE

Belmont Elementary School IAQ, Lincoln, NE

Bertha Barber Elementary Boiler Replacement, Bellevue, NE

Bertrand Public Schools Building Improvement, Bertrand, NE

Boone Central Public Schools Athletic Complex Phase II, Albion, NE

Boone Central School Renovations and Additions, Albion, NE

Boone Central Schools Study, Petersburg, NE

Broken Bow Public Schools High School HVAC Upgrades, Broken Bow, NE

Brownell Elementary School Fire Alarm Replacement, Lincoln, NE

Bryan Elementary Classroom/Gym Addition, Lexington, NE

Burwell High School HVAC Upgrades, Burwell, NE

Cambridge Public Schools HVAC Upgrades, Cambridge, NE

Centennial Public School Gymnasium/Classroom/Locker Room Addition, Utica, NE

Central City School Early Childhood & Administration, Central City, NE



TODD MITZEL

AIA, NCARB



PRINCIPAL ARCHITECT

Todd is the co-founder of ICON Architectural Group and is the principal production architect and Architect of Record on a majority of ICON's projects. He has over 25 years of architectural experience on a wide array of building types. One of his primary focuses is on Quality Control, Quality Assurance (QCQA) which gives ICON the ability to conduct independent internal reviews before issuing for permits.

Recent Experience

- Ray-Nesson Public School Addition and Renovation
- Maple Valley Public School Addition and Renovation
- Northwood Public School Addition
- New Salem-Almont Public School Expansion Study
- Killdeer Public School Masterplan and Facility Study
- Beulah High School Addition / Renovation Study

MATTI ROINILA

AIA, NCARB



PROJECT ARCHITECT

Matti leads all of ICON's large-scale projects from the design phase through to the bidding and delivery phases. Matti focuses on incorporating new technologies and design elements into ICON's workflow which lead to clear communication with clients and improved efficiencies in project delivery. Matti ensures that each project is completed in the most efficient means possible and that the design of each facility offers a unique solution while meeting the needs of the client.

Recent Experience

- Northwood Public School Addition
- Emerado K-8 School Addition & Renovation
- Maple Valley Public School Addition and Renovation
- Northrop Grumman at Grand Sky
- Northrop Grumman at Grand Sky Phase II Hangar Expansion
- Bank Forward Fargo
- Mason City Multipurpose Arena
- ICON Sports Center

LAURA ROINILA**INTERIOR DESIGNER**

Laura is the lead interior designer on the majority of ICON's K-12 projects. Her responsibilities include space planning, programming, 3-D visualization, finishes & furniture specifications and design, lighting design and selection, , finished material boards, budgeting, client presentations, and construction documents. She will also perform construction administration & site visits during the construction phase.

Recent Experience

- Northwood Public School Addition
- Hatton Eilson Public School Addition and Renovation
- Maple Valley Public School Addition and Renovation
- Emerado K-8 School Addition & Renovation
- Grafton School District New Middle School and Elementary Addition
- Northrop Grumman at Grand Sky
- Bank Forward Fargo

MARTIN KASL

PE, LEED AP

**PRINCIPAL ENGINEER**

Marty has more than 25 years of mechanical design and project management experience, including industrial boiler plant design and mechanical building systems. Marty is affiliated with the American Society of Heating, Refrigeration, and Air Conditioning Engineers (ASHRAE), and the Lincoln Chamber of Commerce.

Recent Experience

- Lincoln Public Schools
- Boone Central K-12 School Renovations and Additions
- Cross County New K-12 School
- Diller-Odell High School Addition
- Gibbon High School Facility Study and New K-12 School
- Hayes Center Public Schools High School Addition, Hayes

THOMAS ERNST

PE

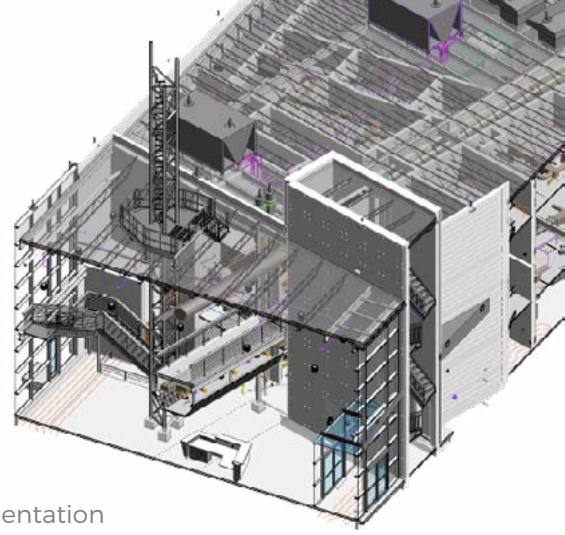
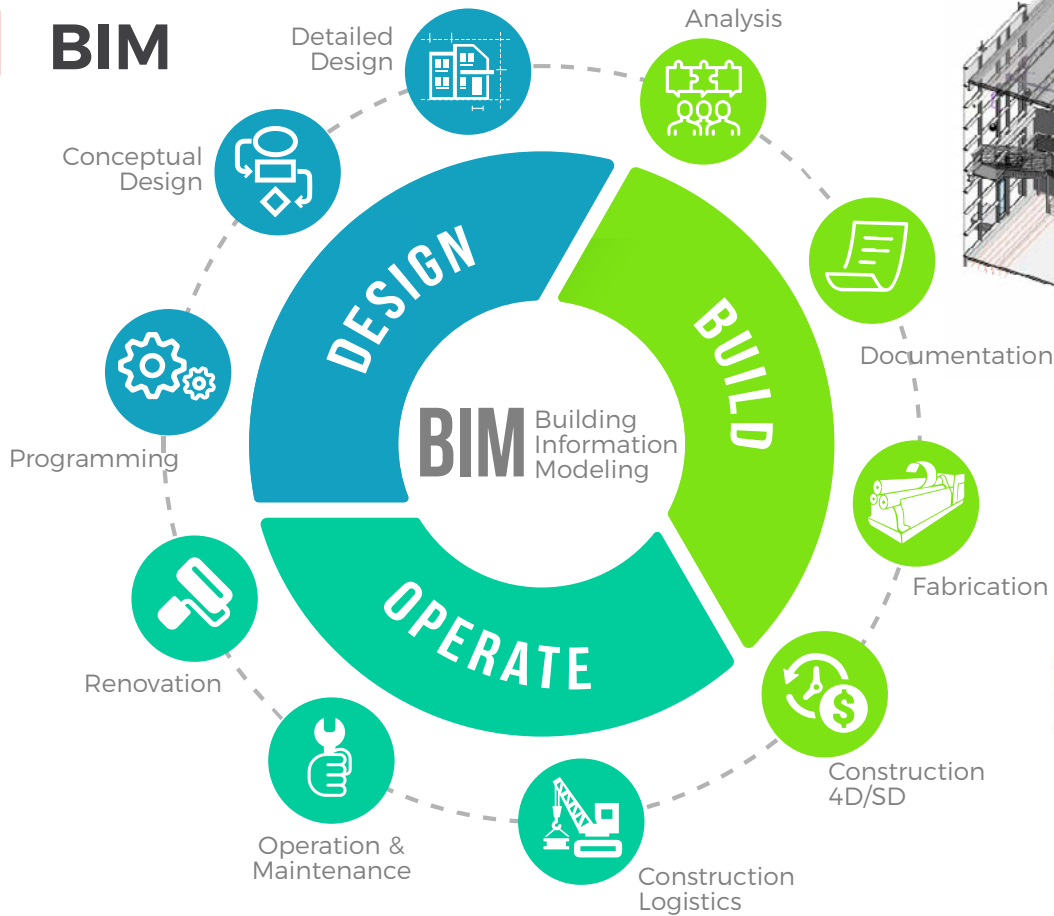
**PRINCIPAL ENGINEER**

Tom is a registered Electrical Engineer and is a Principal of ETI with over 20 years of experience. Since joining ETI in 1994, Tom has been the electrical engineer on numerous education facilities across the state of Nebraska. He has provided consulting services for electrical system requirements, interior/exterior lighting, and technology systems including security, cabling, fire alarm and life safety systems.

Recent Experience

- Lincoln Public Schools, Lincoln, NE:
 - Southeast High School IAQ Replacement
 - Southwest High School New Construction
 - North Star High School New Construction
 - Southwest & Southeast Pool Mechanical Modifications
 - Irving Middle School IAQ & Remodel
 - Lefler Middle School IAQ
 - Mickel Middle School IAQ Renovation

BIM



AUTODESK®
BIM 360™

BUILDING INFORMATION MODELING

Building Information Modeling (BIM) is an innovative method used to seamlessly bridge communication between architecture, engineering, and construction industries. With BIM, ICON can efficiently generate and exchange information, create digital representations of all stages of the building process, and simulate real-world workflow, increasing productivity and improving quality.

BIM benefits the client by providing expanded visualization to help them understand their project without having to translate to 2-D drawings. ICON is able to present “3-D imagery on the fly” of any room or space in the model and easily generate walkthroughs of the project to understand the progression of the spaces. In addition, solar studies can be created to study natural daylighting. All of these tools assist the client in fully visualizing the project and realizing the benefits that the traditional 2-D process has failed to provide.

Upon completion of the project, the model will be an “as-built” representation of the building. Facility owners are embracing the benefits of BIM and obtaining the model for their operations. The model can be used as a tool by the client for future space planning, and monitoring and quantifying fixtures, furnishings, and equipment. In addition, the client can monitor energy performance and facilitate renovation and maintenance work as needed.



3D VISUALIZATION

ICON strives to leverage technology to assist with the communication process throughout our projects. An example of this is our use of three-dimensional (3D) visualizations. With 3D visualizations, we are able to communicate our design intentions to everyone in the design committee, even those who cannot read the traditional architectural drawings. 3D models and animations bring proposed projects to life with realistic accuracy. This exciting technology is utilized in almost every ICON project and it has been met with enthusiasm and has helped to inspire many projects.

PRELIMINARY DESIGN



BUILT PROJECT



UND Law School - University of North Dakota



Nedrose Public School



McKenzie County Courthouse

FEE PROPOSAL



Fees listed below are for normal services as outlined in AIA Document B143 – 2014.

FEE PROPOSAL

DESIGN SERVICES

- Architectural
- Mechanical
- Electrical

FIXED FEE BREAKDOWN

- Restroom Remodel(4) Fixed Fee - \$10,000
- Fire Alarm System Upgrade Fixed Fee - \$22,600
- Remodel of Family Consumer Science Room Fixed Fee - \$6,400

Programming (5%)

Schematic & Design Development (35%)

Construction Documents (35%)

Bidding (5%)

Construction Administration (20%)

REIMBURSABLE EXPENSES

Our reimbursable expenses will be limited on this project as Seward is local to ICON, and the fixed fee is inclusive of our anticipated project expenses. Included within our fee is \$500 of printing expenses. Any other reimbursable expenses will not be submitted without prior approval by Seward School District.

REFERENCES

The majority of ICON Architectural Group's workload is from repeat clients and referrals who understand and appreciate the commitment ICON has to the success of their projects. We believe continuity of communication is the key to a successful project, and we pride ourselves in direct principal involvement in each project.

PAULA SUDA

Superintendent
Hillsboro School District
(701) 636-4360

JACK MAUS

Superintendent
St. Thomas School District
Former Superintendent
Grafton Public Schools
(701) 257-6424

BRIAN WOLF

Superintendent
Maple Valley Public School
(701) 749-2570

KEVIN COLES

Superintendent
Hot Springs School District
Former Superintendent
Northwood School District
(605) 745-4145

TRAVIS JORDAN

Superintendent
Beulah Public Schools
(701) 873-2237

JOHN GRUENBERG

Superintendent
Powers Lake School District
(701) 464-5432

SCOTT PRIVRATSKY

Superintendent
Devils Lake School District
(701) 662-7640

MIKE BITZ

Superintendent
Mandan Public Schools
(701) 751-6500

VICTORIA HAIDER

Nedrose School Board President
(701) 833-1324

BRADLEY FOSS

Principal
Watford City Elementary School
(701) 444-2985

BRANDON BAUMBACH

School Board Member
Emerado Public Schools
(218) 791-0909

SHANE AZURE

Superintendent
Northwood School District
(701) 587-5221

CARL ADOLPHSON

Superintendent
Sacred Heart Catholic School
(218) 773-0877

STEVE HOLEN

Superintendent
McKenzie County School District
(701) 444-3626

CHAD RUZICKA

Directory of Buildings and Ground
Grafton Public Schools
(701) 352-1930

KEVIN ROGERS

Superintendent
Hatton Public Schools
(701) 543-3455

STEVE SWIONTEK

Superintendent
Larimore School District
(701) 343-2366

DR. MARK SANFORD

House Representative
Former Superintendent
Grand Forks School District
(701) 772-4236

STATE OF NEBRASKA

United States of America, } ss.
State of Nebraska }

Secretary of State
State Capitol
Lincoln, Nebraska

I, Robert B. Evnen, Secretary of State of the
State of Nebraska, do hereby certify that

ICON ARCHITECTURAL GROUP LLC

**a North Dakota limited liability company is authorized to transact business in
Nebraska;**

**all fees, taxes, and penalties due under the Nebraska Uniform Limited
Liability Company Act or other law to the Secretary of State have been paid;**

**the Company's most recent biennial report required by section 21-125 has
been filed by the Secretary of State;**

**the Secretary of State has not revoked the Company's Certificate of Authority
and has not filed a notice of cancellation.**

*This certificate is not to be construed as an endorsement,
recommendation, or notice of approval of the entity's financial
condition or business activities and practices.*

In Testimony Whereof,

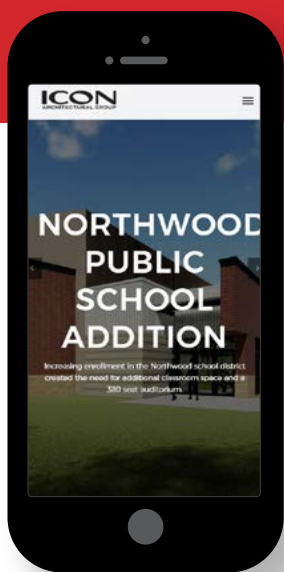
I have hereunto set my hand and
affixed the Great Seal of the
State of Nebraska on this date of

October 14, 2019



A handwritten signature in black ink, reading "Robert B. Evnen".

Secretary of State



Visit us online

ICONARCHITECTS.COM/K-12

THANK YOU
FOR CONSIDERING US!



ICON
ARCHITECTURAL GROUP

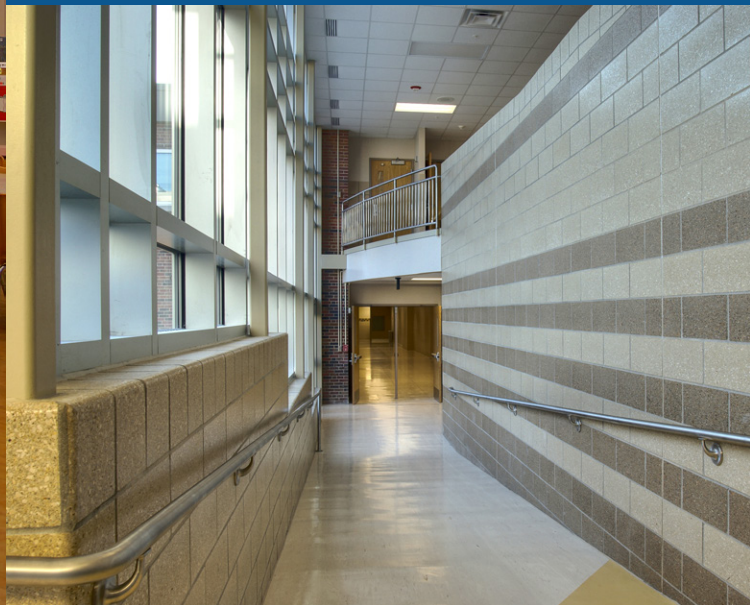
1230 P Street
Suite 200
Lincoln, NE
(402) 318-3101
info@ICONarchitects.com

Seward Public Schools - Family Consumer Science & Restroom Remodels



Architectural Design Associates

7501 'O' Street, Suite 105 | Lincoln, NE 68510
402-486-3232 | www.adalincoln.com





Cover Letter

Josh Fields, Ed.D
Superintendent
Seward Public Schools
410 South Street
Seward, NE 68434

Greetings Dr. Fields and Selection Committee Members,

ADA and our engineering team members would like to thank you for this opportunity to submit our qualifications for your consideration. Due to our previous project experience with work of this type, we have gained a good depth of knowledge in the required design standards and performance expectations. Our team would be privileged to partner with you to develop your improvement projects.

Please review our firm and individual profiles and the many projects that demonstrate our expertise. Our desire would be to apply our combined experience to work for the school district on these projects. I think you will find our level of service and the expertise we bring to your projects will make the design, bidding, and construction process smooth and concise. This will allow your team to put their faith in our team's ability and focus their attention on the other tasks that fill their workdays.

Sincerely,



John Hathaway
Principal and Project Manager
Architectural Design Associates, P.C.



Table of Contents

| | |
|---------------------------------------|----|
| Cover Letter..... | 3 |
| Table of Contents | 5 |
| Our Firm..... | 7 |
| Project Approach | 9 |
| Design Team | 10 |
| Architectural Design Associates | 11 |
| Advanced Engineering Systems..... | 14 |
| Related Experience..... | 16 |
| Featured Education Facilities | 17 |
| Other Related Experience - ADA..... | 20 |
| Other Related Experience - AES | 21 |
| Professional License | 23 |
| References | 23 |
| Fee Proposal | 25 |





When we combine your good ideas and our expertise – great things happen. Give us your goals, timeline, and budget and we'll work with you every step of the way to create a tailored design solution.

Put your project in the hands of Architectural Design Associates. With a diverse portfolio and decades of experience creating exceptional designs, our team has an outstanding reputation throughout the Midwest – and serves a long list of loyal clients. We invite you to review our work and learn more about our approach.

Since opening our doors in 1989, we have assembled a talented, enthusiastic staff that takes pride in establishing excellent client relationships and developing tailored, meticulous plans that are created using the latest technology to bring your ideas to life. We would be proud to partner with you on your next project.

At Architectural Design Associates our motto is simple: “It’s Your Project.” Our talented and attentive team asks lots of questions – and we listen to your answers. Your dreams, needs, and goals guide our ideas and solutions from the initial concepts to the ribbon cutting. We get to know you and establish a comfortable working relationship – fostering mutual respect and open and honest communication. While our professionals bring a wealth of architectural experience to the table, we don’t bring preconceived ideas about what’s right for you.

From new construction to renovation and remodeling, our experience is vast and varied. Since 1989, Architectural Design Associates of Lincoln, Neb., has provided professional, client-focused architectural design services to diverse projects throughout the Midwest including:

| | |
|------------------------|--------------------------|
| Education Facilities | Industrial Complexes |
| Office Buildings | Institutional Facilities |
| Retail Establishments | Multi-Family Housing |
| Financial Institutions | Single-Family Housing |
| Tenant Finishes | Recreation Complexes |
| Health Care Centers | Religious Buildings |

ADA principles/project managers, David Wiebe and John Hathaway, have carefully assembled a team of ten hard-working professionals, including six architects, two architectural technicians, one intern architect and an office manager. Their combined experience and personal attention make what could be an overwhelming process enjoyable and rewarding.

Each member of our team will bring a set of unique and exceptional skills to your project. Our professionals understand the intricacies and specific characteristics that each type of facility demands. As with all of our projects, ADA will approach yours with an innovative eye, integration of technology, preservation of existing elements when desired, and attention to sustainability.

Once your project begins, we keep the conversation flowing with frequent communication– discussing evolving needs and offering design alternatives. Throughout the design and construction process, we make your job easier by serving as your representative to contractors, city and state code officials, and other consultants.

Using programs such as Autodesk® Revit ® and Google SketchUp Pro® allows us to create 3-D digital models. These models let us illustrate and develop our ideas at a higher quality and depth. The models also let our clients explore and experience the project via perspective images, video walkthroughs, and virtual reality walkthroughs, allowing them to make further input during the design and help avoid changes during construction.

Architectural Design Associates believes that quality is in the details. That’s why our building designs include sharp, aesthetically pleasing plans that are also practical and cost-effective to build. This attention to detail is reflected in the drawings themselves, which are meticulously created with a high level of precision and accuracy. Contractors appreciate our detailed drawings because they allow jobs to flow smoothly – with fewer on-site challenges and changes. Clients, too, appreciate our expertise – knowing that quality drawings result in projects that are completed on time and on budget.

It’s this attention to detail and quality relationships that keep clients coming back. We take great pride in the fact that many of our projects come from repeat clients:

Peru State College, Peru, NE
Lincoln Public Schools, Lincoln, NE
University of Nebraska, Lincoln, NE
Hampton Enterprises, Lincoln, NE
Excel Development Group, Lincoln, NE
Care Initiatives, West Des Moines, IA
Lincoln Dialysis Center, Lincoln, NE
Lincoln Parks and Rec, Lincoln, NE
The State of Nebraska, Lincoln, NE
York General Hospital, York, NE
Gateway Mall/Starwood Retail Partners,
Chicago, IL
Commercial Investment Properties,
Lincoln, NE

Their trust in us speaks to the quality of our work and our people.

Project Approach

Architectural Design Associates has assembled a team of experienced professionals that have a great history of working together on projects similar to this facility as well as many other types of projects. In addition to our office, our team is made up of Advanced Engineering Systems for mechanical/electrical/plumbing design. Both are located in Lincoln, Nebraska and share our passion for serving our clients.

Our team's proven communication and planning processes, combined with our previous experience working with various school districts, universities, and colleges will lead to a successful design collaboration. ADA and our team have an established track record of design for many facilities that incorporate the components called for in the program for the Seward Public Schools Remodel Projects. This breadth of experience and a strong history of communication will ensure a responsive schematic design and thorough cost estimate for preparation toward the next phase of your project.

Initial Meetings

Our goal will be to get to know the groups and individuals who have a stake in the outcome of the project and gather details to define the scope of work, budgets, timelines and priorities. From our initial meetings moving forward, you will find our team to be responsive to all of the stated goals and the information gathered during the discussions our team has with all parties involved in the design process.

Site Evaluation

We will conduct a thorough site evaluation to the extent applicable, accompanied by all of our engineering partners in order to fully understand the project parameters. We will carefully document details during the evaluation to establish a solid foundation for project plans, to understand the building and context.

Preliminary Schedule

We will develop a schedule with Seward Public Schools, showing all critical milestones to ensure timely discussion and feedback of critical design decisions.

As the project progresses through schematic design and the estimation phase, the schedule will be continuously refined, updated and monitored to make sure the project meets the time schedules that have been discussed and accepted by all team members.

Design Phase

Once all critical information has been gathered, ADA and our consultants will partner to create comprehensive designs and work closely with the project representatives and team to present plans for thorough owner review. Frequent reviews and feedback are critical to creating a design solution that responds to the program and makes the best use of future project funds. If desired, we may recommend a mechanical system life cycle analysis, as well as pricing alternates for various mechanical systems to build additional value into the proposal and estimate.

Managing Scheduling Challenges

Over the years, we have encountered and successfully overcome various scheduling challenges. Examples of our successes include helping an owner in a decision to pre-purchase long lead time equipment and prodding team members to expedite the process or add staff to a project if needed (including pressing some owners to speed up review of our submitted documents). All approaches have resulted in timely completion and better projects for our clients.

Quality Control

The keys to high-quality design and construction are communication, investigation and thorough documentation. You will find that our team is always listening, and strives to meet your project goals in a way that manages precious capital investment and disruption to the functions of existing facilities.

Design Team

The Architectural Design Team

John Hathaway, AIA, Principal, Project Architect
David Wiebe, AIA, LEED® AP, Principal, Design Architect
Dick Bergt, CSI, Project Manager
David Stirtz, Project Architect
Chris Pischel, AIA, Project Architect
Chris Northup, Project Manager
Geoffrey Childs, Architect
Gregory Schepler, Intern Architect
Dillon McLain, Architectural Technician
Jada Northup, Office Manager

ADA Responsibilities:
Overall Team coordination,
Initial Investigation,
Architectural Design,
Construction Documents,
Specifications, Bidding and
Construction Administration

Our Project Consultants

Advanced Engineering Systems - MEP Engineering

Vishal G. Khanna, M.S., P.E., LEED® AP MEP, Project Manager, Mechanical Engineer
Jeffrey A. Johnson, P.E., RCDD, Electrical Engineer
Kyle J. Wilkinson, P.E., LEED® AP, Mechanical Engineer
Jeremy J. Wagener, Mechanical Designer
Steve D. Jensen, Electrical Engineer

AES Responsibilities:
Initial Investigation,
Mechanical/Electrical/
Plumbing Design, Fire Alarm/
Access Control Design, MEP
Construction Documents,
Specifications and
Construction Administration

Architectural Design Associates



John Hathaway | AIA | Principal | Project Manager

John has vast experience in renovations, educational projects, multiple performing arts spaces, remodels, new construction, and nursing care facilities. Among his project experience are The Peru State College Performing Arts Center Addition and Renovation, TJ Majors IAQ Renovation, and Indian Hills Community Church Sanctuary and performance Remodel, in addition to many ADA remodels of education and religious facilities. While working with a previous firm John was involved in many project types including animal research, performing arts, senior living, auto repair, body shop, religious, educational, and commercial projects. John is involved in many technically advanced project types, from the before mentioned Peru State College Performing Arts Center to coordinating the stringent requirements of FM Global underwriting for Reroof projects involving municipal properties. Integration of technology in the building design process falls to John's able hands as a Principal, Project Manager and Designer.

John earned his Master of Architecture degree from the University of Nebraska and has over a decade of experience in the architectural profession. John enjoys all aspects of the construction process, and clients can put their trust in his expertise and guidance from design through construction.

Professional Registration:
Nebraska and South Dakota Registered Architect

Professional Affiliations:
American Institute of Architects (Current President Elect, Lincoln Section),
National Council of Architectural Registration Boards.



David Wiebe | LEED® AP | AIA | Principal | Project Manager

David possesses a broad range of architectural design experience and a demonstrated commitment to excellence in design. For more than 25 years, David has designed projects throughout Nebraska and the Midwest. David has designed multiple projects for Lincoln Public Schools and the University of Nebraska-Lincoln. David has designed multiple projects for Lincoln Parks and Recreation including Facilities at Pinewood Bowl and the new Nature Education Building at Pioneers Park. David has also worked with several surrounding communities to analyze existing community facilities and preparing preliminary designs for proposed buildings.

At ADA, David participates in all phases of the design process from client meetings and initial layout to final construction drawings. David enjoys leading clients through the design process, beginning with 3-D conceptual sketches, floor plans, site plans and detailed designs. This lets clients preview their projects in an animated 3-D virtual framework, which truly brings their ideas to life. Each project, regardless of size, receives David's full attention.

Professional Registration:
Nebraska Registered Architect

Professional Affiliations:
American Institute of Architects (Past President, Lincoln Chapter)
National Council of Architectural Registration Boards
City of Lincoln Unified Construction Council



Dick Bergt | CSI | Senior Architect | Project Manager

With more than 48 years of architectural experience, Dick has an impressive resume that includes many diverse project types. He is passionate about excellence in design and brings that dedication through the front door each day.

Since founding ADA in 1989 with Jay Vallicott, Dick successfully led our team of architects through an impressive variety of projects. Dick now continues to support the work of the firm in the Role of Senior Architect – staying in constant contact with his team to provide expert guidance and assistance. In fact, you will find him at many client meetings – eager to stay on top of the latest developments and inspired by the progress being made. This proactive approach, together with Dick's deeply held commitment to service, consistently produces well-designed projects and satisfied clients.

Professional Registration:

Nebraska, Kansas, Iowa, Missouri, South Dakota, and Oklahoma

Professional Affiliations:

Construction Specifications Institute

National Council of Architectural Registration Boards

Midwest Housing Initiatives Board of Directors



David Stirtz | Project Architect

From Minden and Fullerton to York, David City, and Lincoln, David's K-12 designs can be seen in several Nebraska Communities – whether it's additions, renovations, or remodels – including Goodrich Middle School IAQ/ Code Improvements/Additions and Renovations, LPS Nutrition Services Food Stores Warehouse, Humann Elementary Temporary School, Brownell Elementary IAQ/Addition and Renovation, and Eastridge Elementary IAQ/Media Center and Renovations. His architectural experience and strong organizational skills make him well-suited for his diverse responsibilities at Architectural Design Associates.

As a project architect, David is responsible for project design and development, and the preparation of detailed documents to accurately convey the client's needs. He also performs code research, prepares construction cost estimates, coordinates design team and client meetings, produces construction documents, and assists with bidding and negotiation, construction administration and contract preparation. David's work is meticulous and accurate, and his excellent communication skills build strong client relationships.

Professional Registration:

Nebraska Registered Architect



Chris Northup | Project Manager

Chris joined ADA in July 2006, and has over 22 years of experience in architectural design and construction practices on a variety of projects. A few Addition and Renovation projects that he has been involved with over the years are Lincoln Public Schools Secured Entrance Upgrades, Union College Physician Assistant Studies Renovation, TJ Majors IAQ Renovations at Peru State College, and Goodrich Middle School in Lincoln, NE.

Chris is exceptionally versatile having spent parts of his career as an owner of a general contracting company, which gives him a unique perspective and understanding for our clients. Along with superior technical skills in preliminary design, construction drawings, writing specifications, estimating and managing projects through all phases of design and construction. Chris also has many years of experience as a consultant for commercial food service design.



Chris Pischel | AIA | Project Architect

Chris has 15 years of architectural experience working on a wide variety of projects, from remodels and renovations to new construction. Involved in all phases of the project, Chris is responsible for assisting with the development of preliminary design drawings, completing and assembling final construction documents, and performing construction administration. He also works closely with design consultants and the owner. In addition to being proficient in the use of AutoCAD, Revit, and Photoshop, Chris's excellent organizational ability has him in charge of managing the company archives of past projects as well as the company's digital content library.

Professional Registration:
Nebraska Registered Architect



Jada Northup | Business Office Manager

Armed with an impressive business background, Jada is responsible for many duties at ADA – administrator, bookkeeper, account coordinator, administrative assistant, marketing manager, and receptionist. She's skilled in various computer programs, including Microsoft Office (Word, Excel, Publisher and PowerPoint) and Quickbooks Premier. Jada is also a General Notary in the State of Nebraska.



Dillon McLain | Architectural Technician

Dillon joined ADA in 2015 during an internship for completion of his Architectural Technology program. He has remained with us ever since. Dillon brings a strong level of technical proficiency to his work, as he helps our team leaders flesh out designs into final designs and built projects.



Gregory Schepler | Intern Architect

Gregory has shown the ability to apply a strong sense of design and thorough research to help in the implementation of all areas of projects. His work at ADA includes: Peru State Theater Addition, various Union College projects, University of Nebraska projects, and various residential and commercial projects.

Gregory is passionate about design, how it can shape people's perceptions, and the unique opportunities of every project. He enjoys working with the client and design team to create the best possible project. Design is most successful with critical thinking and creativity, while keeping context and future generations in mind. Using the newest tools and a fresh design approach he has proven to be a crucial member to our project team.

Gregory graduated from the University of Nebraska - Lincoln with his Masters of Architecture in 2015 and is actively working on his professional AXP (Architectural Experience Program) with the final goal of becoming a Licensed Architect.

Advanced Engineering Systems



Vishal G. Khanna | M.S. | P.E. | LEED® AP | MEP Project Manager | Mechanical Engineer

Education:

- Masters of Science in Mechanical Engineering Syracuse University, 1984
- Bachelor of Technology in Mechanical Engineer Indian Institute of Technology, Bombay, 1982

Professional Practice:

- | | |
|--------------|--|
| 2006-Present | Principal, Advanced Engineering Systems, Inc., Lincoln, Nebraska |
| 2003-2006 | Principal, Engineering Technologies, Inc., Lincoln, Nebraska |
| 1991-2003 | Principal, M.E. Group, Inc., Lincoln, Nebraska |
| 1985-1991 | Associate, Maniktala Associates, Lincoln, Nebraska |

Registrations:

Registered Professional Mechanical Engineer

Nebraska, South Dakota, Iowa, Utah, Colorado, Alabama, Montana, Oklahoma, Tennessee, Wisconsin, Michigan, Pennsylvania, New Mexico, Nevada, Wyoming, Arizona, Ohio, Missouri, Kansas, Illinois, Indiana, Texas, Massachusetts, New Hampshire, Rhode Island, New York, Mississippi, NCEES

Professional Affiliations:

American Society of Heating, Refrigeration, and Air Conditioning Engineers (ASHRAE)



Kyle J. Wilkinson | P.E. | LEED® AP | Mechanical Engineer

Education:

- Bachelor of Science in Mechanical Engineering, University of Nebraska, 2003

Professional Practice:

- | | |
|--------------|---|
| 2006-Present | Advanced Engineering Systems, Inc., Lincoln, Nebraska |
| 2004-2006 | Engineering Technologies, Inc., Lincoln, Nebraska |
| 2001-2004 | Wellmann Plumbing & Air Conditioning, Lincoln, Nebraska |

Registrations:

Registered Professional Mechanical Engineer Nebraska

Professional Affiliations:

American Society of Heating, Refrigeration, and Air Conditioning Engineers (ASHRAE)



Jeremy J. Wagener | Mechanical Designer

Education:

- Associates of Applied Science in Architectural Drafting and Design, and Building Systems, High-Tech Institute, Phoenix, Arizona, 1998

Professional Practice:

- | | |
|--------------|---|
| 2006-Present | Advanced Engineering Systems, Inc., Lincoln, Nebraska |
| 1999-2006 | Engineering Technologies, Inc., Lincoln, Nebraska |



Steve D. Jensen | Senior Electrical Designer

Education:

- Bachelor of Science in Electrical Engineering University of Nebraska, Lincoln, Nebraska, 1972

Professional Practice:

| | |
|--------------|---|
| 2006-Present | Advanced Engineering Systems, Inc., Lincoln, Nebraska |
| 2004-2006 | Engineering Technologies, Inc., Lincoln, Nebraska |
| 1991-2003 | M.E. Group, Inc., Lincoln, Nebraska |
| 1984-1991 | Maniktala Associates, Lincoln, Nebraska |
| 1982-1984 | Leo A. Daly, Omaha, Nebraska |
| 1977-1982 | Construction Co., Lincoln, Nebraska |
| 1976-1977 | Nebraska Department Of Roads, Lincoln, Nebraska |
| 1974-1976 | Notifier Company, Lincoln, Nebraska |
| 1972-1974 | Power Regulators, Chicago, Illinois |



Jeffrey A. Johnson | P.E. | RCDD | Electrical Engineer

Education:

- Bachelor of Science in Electrical Engineering, University of Nebraska, 1996

Professional Practice:

| | |
|---------------|--|
| 2007-Present | Advanced Engineering Systems, Inc., Lincoln, Nebraska |
| 2002-2007 | Noel Engineering, Inc., Lincoln, Nebraska |
| 2001-2003 | General Electric Company - GE Power Systems, Lincoln, Nebraska |
| 1996-2001 | U.S. Marine Corps |
| 5/1995-9/1995 | Fred Thompson & Associates, Lincoln, Nebraska |

Registrations:

Registered Professional Electrical Engineer: Nebraska, South Dakota, Texas, Colorado, Oklahoma, Missouri, Massachusetts, New Hampshire, Tennessee, New Mexico, Arizona, Iowa, Kansas, Wyoming, Mississippi, NCEES



Don Changstrom | Lighting Designer

Education:

- Architectural Drafting, Southeast Community College, Lincoln, Nebraska, 1990-1995

Professional Practice:

| | |
|--------------|---|
| 2006-Present | Advanced Engineering Systems, Inc., Lincoln, Nebraska |
| 2000-2006 | Engineering Technologies, Inc., Lincoln, Nebraska |
| 1981-1999 | Changstrom Company, Inc., Lincoln, Nebraska |

Registrations:

Certified Lighting Designer: Nebraska

Related Experience



Featured Education Facilities

Holmes Elementary School 5230 Sumner St, Lincoln, NE

Lincoln Public Schools approached ADA to do a comprehensive renovation, which included replacing the HVAC systems and designing additions of a kindergarten classroom, two general purpose classrooms, a restroom and a mechanical room, as well as general maintenance items and mold abatement/prevention measures. The remainder of the existing building was remodeled to meet current ADA, fire safety and international building codes. All of these changes were completed while the building was occupied.

(See Below)



Lincoln Lutheran School - Science Renovation Project 1100 N 56th St, Lincoln, NE

Our Team was selected to renovate the existing shop area into a Chemistry Lab, Lecture Classroom, and a Maintenance Area. The existing Chemistry Lab and Natural Sciences Classroom was renovated into a larger Natural Sciences Classroom and a Counselor's Office and Counselor's Library area.

(See Above)





Mickle Middle School

5230 Sumner St, Lincoln, NE

ADA designed a complete and phased remodel of Mickle Middle School for Lincoln Public Schools, which included an addition for a fitness center, the industrial technologies department and a new gym. A south addition included 13 new classrooms, new public restrooms and mechanical spaces. The remainder of the existing building was remodeled to meet current ADA, fire safety and international building codes. The project also included a complete re-roof and exterior upgrade with masonry restoration and new windows. Existing bathrooms, along with an additional elevator and staircase, were upgraded to provide accessibility. All of this work was completed while the building was occupied.



Goodrich Middle School

4600 Lewis Ave, Lincoln, NE

ADA was chosen by Lincoln Public Schools to design extensive improvements and additions to this existing middle school. Our team not only developed the design for the comprehensive Indoor Air Quality and codes upgrades, but planned additions for a new media center, 11 classrooms, a third gymnasium/multipurpose room, a kitchen, a cafeteria/commons area, a fitness room and new restrooms. We also designed general renovations throughout the facility.



College of Hair Design
9000 Andermatt Dr, Lincoln, NE

ADA collaborated with Perry Gauthier to design this one-story structure for the College of Hair Design that includes spacious classrooms, offices, salons and other specialty areas. Cosmetology and esthetics are taught at this east campus location, which offers convenience, technology-based learning tools and hands-on clinics. The esthetics clinic features 14 private treatment and training areas. There is also an eight-bed semi-private instructional area for hands-on training. Common spaces include lobbies, waiting and reception, retail areas, restrooms, break rooms, conference areas, corridors, storage, and mechanical rooms.

(See Below)



*Peru State College -
Performing Arts Center*
Peru, NE

Peru State College requested a comprehensive renovation for their still original 1920 performing arts building. This entailed stripping the theater down to the shell and installing up-to-date sound, lighting and projection systems. The theater space was refurnished with new seating and acoustical panels. The existing entry hall and support spaces were demolished to provide larger facilities and a more spacious lobby. On the exterior, the adjacent green space was developed into an event space and donor plaza. The project also incorporated Peru State's geothermal heating system with several additional wells installed for this project.

(See Above)

Other Related Experience - ADA

Education:

Lincoln Public Schools, Lincoln, NE

- Student Athlete Development Center at Seacrest Field
- Seacrest Field Master Plan
- Brownell Elementary Multi-Purpose Room/IAQ Project
- Bryan Community Child Center IAQ Upgrades
- Clinton Elementary IAQ Upgrades
- Clinton Elementary Gym/Classroom Addition
- Dawes Middle School IAQ Upgrades
- Eastridge Elementary School IAQ Upgrade/ Media Addition
- Millard-Lefler Media Center Remodel
- Morley Elementary Elevator Addition
- Saratoga Elementary IAQ Upgrades
- Seacrest Field Restrooms Remodel
- Seacrest Field Sound & Lighting Project
- Seacrest Field Sound Bleacher & Press Box Renovation
- West Lincoln Elementary IAQ Upgrades
- West Lincoln C.A.M. Upgrade
- Southeast High School Elevator Addition
- Brownell Elementary Elevator Addition
- Clinton Elementary Elevator Addition

Lincoln Christian School

- New Elementary and High Schools
- Science Lab Renovation
- Sports Complex & Tennis Courts Study
- Facility Additions
- Fellowship Balcony Remodel
- Classroom Remodel

University of Nebraska-Lincoln, Lincoln, NE

- Abbott Sports Complex
- Agriculture Hall Renovation
- Agriculture Research & Development Center Maintenance Building & Interior Finish
- Agriculture Research and Development Center New Facility, Mead, NE
- Animal Science 2+2 Building Renovation
- Animal Science Building LB605 Renovations
- Animal Science Building Roof Replacement
- Architectural West Classrooms Remodel

- Ashfall Excavation Site Building and Master Plan
- Avery Hall Renovation
- City Campus Power Plant Roof Replacement
- Coliseum Roof Replacement
- College of Dentistry Remodel
- East Campus Power Plant Roof Replacement
- East Union Student Center Renovations
- Ferguson Hall Lecture Room Remodel
- Fleming Fields Activity Building Renovation
- Food Industry Building Remodel
- Henzlik Hall Remodel
- Keim Hall Computer Lab Remodel
- Kieselback Laboratory Mechanical/Electrical Renovation
- Laser-Assisted Nano-Engineering Laboratory Renovation
- Lied Center Exterior Renovations
- Mabel Lee Hall Remodel
- Midwest Roadside Safety Facility Remodel
- Military and Navel Science Building Remodel and Roof Replacement
- Natural Resources Building Renovation
- Natural Resources Building Roof Replacement
- Westbrook Music Building Roof Replacement

Other School Projects

- Elmwood Murdock Elementary Kitchen Renovation
- Hartley Elementary ADA Updates
- Hartley Elementary Elevator Addition
- Mearle Beattie Elementary Media Center Addition
- Saratoga Elementary Elevator Addition
- Mount Ayr High School Safe Room Addition, Mount Ayr, IA
- West Central High School and Elementary School Safe Room Additions, Stuart, IA
- Church of Holy Spirit Elementary School - New Facility, Plattsmouth, NE
- Nebraska Evangelical Lutheran School – New Facility, Waco, NE
- Indian Hills Community Church Education Wing Addition
- Trinity Lutheran School – New Facility
- Freeman Public Schools Feasibility Study, Adams, NE



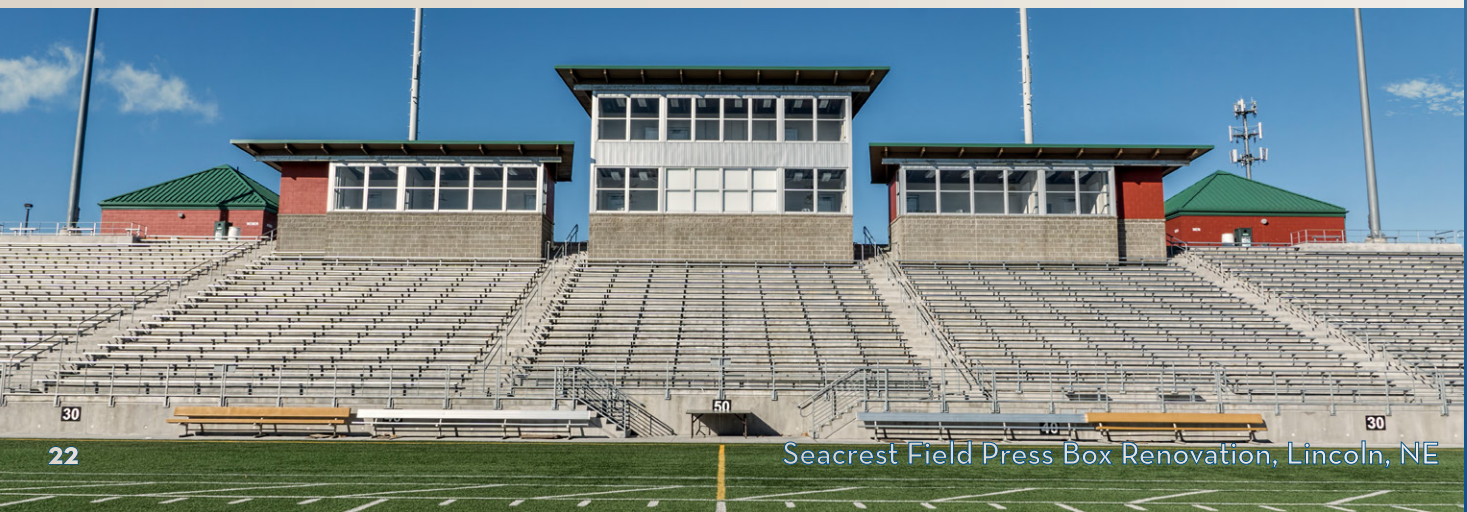
Other Related Experience - AES

- Alpha Omega House – Facility Addition, Lincoln, Nebraska
- Alpha Tau Omega Fraternity - Renovation, Lincoln, Nebraska
- Briar Cliff University – Lab Remodel, Sioux City, Iowa
- Central Community College – Automotive Lab/ Classroom Remodel, Grand Island, Nebraska
- Central Community College – Facility Remodel, Kearney, Nebraska
- College of Hair Design – New Facility, Lincoln, Nebraska
- Doane College – Perry Memorial Student Center, Crete, Nebraska
- Gallup Organization – New 320,000 sf. Gallup University, Omaha, Nebraska
- Lambda Chi Fraternity – New Facility on University of Nebraska-Lincoln Campus, Lincoln, Nebraska
- Little Priest Tribal College – Residential Complex, Winnebago, Nebraska
- Mount Marty College - Cimpl Arena Main Entry Renovation, Yankton, South Dakota
- Oglala Lakota College - Arts & Business Incubator Pine Ridge Artspace, Kyle, South Dakota
- Oglala Lakota College - Pejuta Haka College Center, Kyle, South Dakota
- Oglala Lakota College - Pejuta Haka New Classroom Building, Kyle, South Dakota
- Oglala Lakota College – Automotive Service Center, Rapid City, South Dakota
- Oglala Lakota College – Automotive Vo-Tech Building, Rapid City, South Dakota
- Oglala Lakota College – Faculty Housing 4-Plex Unit, Rapid City, South Dakota
- Oglala Lakota College – He Sapa Facility Addition, Rapid City, South Dakota
- Peru State College - Centennial Complex Residence Halls Electrical System Upgrade, Peru, Nebraska
- Peru State College - Centennial Complex Residence Halls Fire Sprinkler Installation, Peru, Nebraska
- Peru State College - Centennial Complex Transformer Relocation, Peru, Nebraska
- Peru State College – Field House Remodel, Peru, Nebraska
- Peru State College - Fire Alarm System Upgrades for 6 Buildings, Peru, Nebraska
- Peru State College - Hoyt Science Building Temperature Controls Upgrade, Peru, Nebraska
- Peru State College – TJ Majors Building Upgrade, Peru, Nebraska
- Peru State College - Theatre/ Community Event Center Program Statement, Renovation and Addition, Peru, Nebraska
- Phi Kappa Theta – New Fraternity, Lincoln, Nebraska
- Sinte Gleska University - New Student Union and Education Building Addition, Mission, South Dakota
- Southeast Community College - Coffee Shop, Lincoln, Nebraska
- Southeast Community College - Temporary Site Lighting, Lincoln, Nebraska
- Southeast Community College – Classroom Addition/ Day Care Remodel & Addition, Lincoln, Nebraska
- Southeast Community College - Restroom Remodel, Lincoln, Nebraska
- Southeast Community College – Technical Assistance Studies for 4 Buildings, Milford, Nebraska
- Union College – Nursing Simulation Lab Renovation, Lincoln, Nebraska
- Union College – PA/IRR Remodel, Lincoln, Nebraska
- University of Iowa Hospitals and Clinics – Medical Clinic, Iowa City, Iowa
- University of Nebraska – Open End Contracts (2018-2022, 2015-2018, 2003-2007, 1999-2003, 1996-1999), Lincoln, Omaha, and Kearney, Nebraska
- University of Nebraska-Kearney - General Services Building Remodel, Kearney, Nebraska
- University of Nebraska-Kearney – Health Science Education Building Commissioning, Kearney, Nebraska
- University of Nebraska-Kearney – Mantor Hall Renovation, Kearney, Nebraska
- University of Nebraska-Kearney – Men's & Randall Dormitory Renovation, Kearney, Nebraska
- University of Nebraska-Kearney - Ockinga Hall HVAC Upgrade, Kearney, Nebraska
- University of Nebraska-Kearney – Otto Olson Demolition, Kearney, Nebraska



Eastridge Elementary School, Lincoln, NE

- University of Nebraska-Kearney - Welch Hall Demo, Kearney, Nebraska
- University of Nebraska-Lincoln – Abel-Sandoz Residence Halls Dining Center Renovations, Lincoln, Nebraska
- University of Nebraska-Lincoln – ARDC Main Building Design/Build Performance Specification, Mead, Nebraska
- University of Nebraska-Lincoln – Ashfall Excavation Facility, Royal, Nebraska
- University of Nebraska-Lincoln – Carson Black Box Theater Remodel, Lincoln, Nebraska
- University of Nebraska-Lincoln – East Campus Fleming Fields Activity Building Study and Remodel, Lincoln, Nebraska
- University of Nebraska-Lincoln - East Campus Inventory Building, Lincoln, Nebraska
- University of Nebraska-Lincoln – Fire Alarm Systems for Bessey Hall, Lincoln, Nebraska
- University of Nebraska-Lincoln – Fire Alarm Systems for Love Library North & Link, Kimball Recital Hall, Oldfather Hall, and Andrews Hall, Lincoln, Nebraska
- University of Nebraska-Lincoln – Fire Alarm Systems for Agricultural Communications Building, Filley Hall, Food Industry Complex, and Plant Sciences Hall, Lincoln, Nebraska
- University of Nebraska-Lincoln - Fleming Fields Annex Building Remodel, Lincoln, Nebraska
- University of Nebraska-Lincoln – Hamilton Hall Morin Lab Remodel, Lincoln, Nebraska
- University of Nebraska-Lincoln – Insectary Greenhouse Remodel, Lincoln, Nebraska
- University of Nebraska-Lincoln – Kauffman Hall Remodel, Lincoln, Nebraska
- University of Nebraska-Lincoln – Love Library Room 102 Remodel, Lincoln Nebraska
- University of Nebraska-Lincoln – Love Library Technical Services Offices, Lincoln Nebraska
- University of Nebraska-Lincoln – Mantor Hall Exhaust Evaluation & Modifications, Lincoln, Nebraska
- University of Nebraska-Lincoln – Print Shop Programming Study, Lincoln, Nebraska
- University of Nebraska- Lincoln – Textile Design Studio Renovation, Lincoln, Nebraska
- University of Nebraska-Lincoln – Walter Scott Engineering Center Computer Room Piping & HVAC, Lincoln, Nebraska
- University of Nebraska-Lincoln – Walter Scott Engineering Center Data Center Energy Recovery Analysis, Lincoln, Nebraska
- University of Nebraska-Lincoln – Walter Scott Engineering Center Exhaust/Make-Up Air Study, Lincoln, Nebraska
- University of Nebraska-Lincoln – Walter Scott Engineering Center HVAC Cost Analysis, Lincoln, Nebraska
- University of Nebraska-Lincoln – Walter Scott Engineering Center HVAC Coils Replacement, Lincoln, Nebraska
- University of Nebraska-Lincoln – Walter Scott Engineering Center Room 12 Laser Assisted Nano-Engineering (LANE) Lab Renovation, Lincoln, Nebraska
- University of Nebraska-Lincoln – Walter Scott Engineering Center VAV Box Conversion, Lincoln, Nebraska
- University of Nebraska-Omaha – Conversion of Rooms 104 & 105 in Engineering Building to a Broadcast Lab, Omaha, Nebraska
- University of Nebraska Medical Center – Computer Room Addition, Omaha, Nebraska
- University of Nebraska Medical Center – DRC1 Energy Conservation Study, Omaha, Nebraska
- University of Nebraska Medical Center – Vert Lab at Wittson Hall, Omaha, Nebraska
- Wayne State College - Applied Technology Center and Benthack Hall Renovation Program Statement, Wayne, Nebraska
- Wayne State College - Center for Applied Technology, Wayne, Nebraska
- Wayne State College – Hahn Hall Administration Building Upgrade, Wayne, Nebraska
- Wayne State College - Memorial Press Box Replacement, Wayne, Nebraska



Professional License

John Robert Hathaway
Architectural: A-4244
Effective Date: 6/13/2012

Vishal Gopi Khanna
Mechanical Engineering: E-6671
Effective Date: 2/2/1989

Jeffrey Allen Johnson
Electrical Engineering: E-11652
Effective Date: 12/30/2005

References

- Cory Ostrander, University Project Manager Facilities Planning and Construction
1901 Y Street, Lincoln, NE 68588
402.472.4112 costrander@nebraska.edu
- Scott Wieskamp, Director of Operations, Lincoln Public Schools
800 S. 24th Street, Lincoln, NE 68510
402.436.1072 swieska@lps.org
- Matthew Roque, Director of Institutional Research, Union College
3800 S. 48th Street, Lincoln, NE 68506
402.486.2600, ext: 2103 maroque@ucollege.edu
- Michelle Keogh, President of Properties Division, Hampton Enterprises Inc.
3400 Plantation Drive, Suite 110, Lincoln, NE 68516
402.489.8858 mkeogh@hampton1.com



Fee Proposal

Our proposed architectural and engineering design fee breakdown is as follows for the proposed project scope. This includes services from Architectural Design Associates and Advanced Engineering Systems. The scope of work included in the fees proposed includes the noted number of Design and Construction Administration site visits for inspection and meetings. It also includes the support for bidding and project permit submissions with required local and state entities.

- | | |
|--|--------------------------|
| 1. ADA Restroom Remodel for four (4) restrooms. | \$23,800 (3 Site Visits) |
| 2. Fire Alarm System Replacement throughout entire facility. | \$29,000 (3 Site Visits) |
| 3. Consumer Science Classroom Remodel, including coordination of Asbestos Abatement with a remediation contractor if required. | \$16,000 (2 Site Visits) |

The fees proposed are determined to the best of our understanding of the scope of work, if multiple tasks are undertaken at the same time adjustments could be negotiated by combining scope of work with other tasks. We would love to have the opportunity to help the district with this project and will welcome any questions with the proposal.



Architectural Design Associates P.C.

7501 'O' Street, Suite 105, Corporate Centre Office Park, Lincoln, NE 68510

Telephone | (402) 486-3232

Web | www.adalincn.com



The
Clark
Enersen
Partners



QUALIFICATIONS TO PROVIDE PROFESSIONAL **ARCHITECTURAL AND ENGINEERING SERVICES**

Seward Public Schools, High School Renovation Projects | November 4, 2019



1010 Lincoln Mall, Suite 200
Lincoln, NE 68508
402.477.9291

clarkenersen.com

Tim Ripp, AIA, LEED AP
Principal-In-Charge | Project Manager
tim.ripp@clarkenersen.com
402.477.9291

Dr. Josh Fields
Seward Public Schools
410 South Street
Seward, NE 68434

November 4, 2019

Members of the Selection Committee:

On behalf of The Clark Enersen Partners, I would like to express our desire and interest in providing architecture and engineering services for the Seward Public Schools High School renovation and improvement projects. We enjoyed working with you on your new Middle School project in 2012, and would be honored to engage with you again to help achieve your goals and objectives for this endeavor.

Founded in 1946, our firm has designed PK-12 schools all across Nebraska for 73 years. In the past 12 years alone, we have planned and/or designed more than \$370 million worth of school construction, a majority of which includes renovations similar to those proposed for the Seward High School. Through our work and continuing education activities, we are able to stay current with emerging trends in school design. By collaborating with school stakeholders, we will be able to share and vet ideas to discover the best solutions for Seward Public Schools.

It has been our experience that renovations to restrooms, classrooms, and fire alarm systems require a significant amount of multi-disciplinary coordination. Our ability to provide all design services with our in-house team of architects, interior designers, and mechanical, electrical, and structural engineers will greatly enhance project communication and coordination. Our design team will be able to meet face to face on a daily basis to review "what if" scenarios and the completeness of design drawings. This level of coordination will lead to the timely completion of thorough and accurate plans and the seamless integration of engineering systems within each space. Ultimately, this will allow for accurate and responsible pricing by contractors, spaces and systems that function at an extremely high level, and systems that can be easily operated and maintained by your maintenance staff. Architecture firms that outsource engineering services will mostly rely on electronic forms of communication with their consultants, which can lead to delayed response and misinterpreted decisions.

We are excited about the Seward High School renovation and improvement projects and look forward to working closely with you to achieve your goals and objectives. Thank you for considering The Clark Enersen Partners.

Sincerely,

Tim Ripp, AIA, LEED AP
Principal-In-Charge | Project Manager



TABLE OF CONTENTS

| | |
|---------------------------------|----|
| <i>Technical Qualifications</i> | 4 |
| <i>Experience</i> | 9 |
| <i>Personnel</i> | 14 |
| <i>Licensure in Nebraska</i> | 19 |
| <i>References</i> | 20 |
| <i>Cost of Services</i> | 21 |



PLEASANTON PUBLIC SCHOOL | PLEASANTON, NE



EXETER-MILLIGAN PUBLIC SCHOOL | EXETER, NE

THE CLARK ENERSEN PARTNERS FIRM PROFILE

ARCHITECTURE | ENGINEERING | INTERIOR DESIGN

Improving education—and our communities—with better school design has been part of our mission for more than 73 years. One of our firm's first major commissions after becoming incorporated in 1946 was the Hastings, Nebraska Senior High School. Since then, our firm has created a legacy of designing quality learning environments for schools throughout Nebraska. Among these is the new Seward Middle School that was completed in 2012. We are proud of our heritage and find schools to be among the most rewarding work that we do.

All design services needed for the Seward Public Schools High School project will be provided by our talented in-house staff of architects, interior designers, and mechanical, electrical, and structural engineers. Restroom and classroom renovations, and fire alarm system upgrades can be technically challenging projects that require coordination between multiple design disciplines. By virtue of our in-house capabilities in all of the design disciplines required to complete the project, our entire design team will be able to meet face to face whenever needed to discuss design challenges and develop solutions that seamlessly integrate architectural, engineering, and interior design features and systems. The result will be restrooms, a Family Consumer Science classroom, and fire alarm systems that work on all levels, are cost effective, and are able to be easily operated and maintained for many years.

On the following pages, we provide you with our technical qualifications as it applies to our approach for school renovation and improvement projects.

THE CLARK ENERSEN PARTNERS

1010 Lincoln Mall, Suite 200
Lincoln, NE 68508

ESTABLISHED: 1946

PRINCIPAL TO CONTACT:

Tim Ripp AIA, LEED AP
Principal-In-Charge | Project Manager
tim.ripp@clarkenersen.com

clarkenersen.com

SIZE OF FIRM

| | |
|--------------------------------|------------|
| Architects | 25 |
| Arch Designers and Drafters | 14 |
| Landscape Architects | 7 |
| Landscape Designers | 2 |
| Interior Designers | 6 |
| Civil Engineers | 4 |
| Electrical Engineers | 5 |
| Mechanical Engineers | 9 |
| Structural Engineers | 3 |
| Engineering Designers/Drafters | 18 |
| Construction Administration | 8 |
| Administrative | 15 |
| TOTAL PERSONNEL | 116 |



DISTRICT OR1, PALMYRA HIGH SCHOOL | PALMYRA, NE



ELKHORN VALLEY PUBLIC SCHOOLS | ELKHORN VALLEY, NE

TECHNICAL APPROACH

Our methodology is supported by an approach that fosters collaboration and honest dialogue, and the seamless integration of all design elements and systems. We will encourage everyone on the team to communicate their ideas, concerns, and potential solutions based on what they believe to be in the best interest of the Seward Public Schools. We promise to tell you what you need to hear as opposed to what we think you may want to hear and welcome similar input from all stakeholders. This open communication allows thorough vetting of issues and concerns and ultimately, allows the best ideas to rise to the top. Accordingly, we offer the following approach to your high school renovation and improvement projects.

EXISTING FACILITY INVESTIGATION

Due the technical nature of your restroom, fire alarm system, and Family Consumer Science classroom renovations, it will also be important to develop a thorough understanding of existing conditions. We believe that a detailed visual inspection is the best way to develop design solutions that work within the existing structure. It will also help us to develop accurate cost estimates and reduce the frequency and magnitude of surprises during construction. Accordingly, we will conduct a building investigation to determine the following:

- Condition and capacity of HVAC, plumbing, electrical, and structural systems
- Location of any potential physical barriers that would obstruct desired system solutions
- Condition of lighting systems
- Power system capacity and suitability for anticipated functions
- Building envelope and roof conditions
- Necessary code and ADA upgrades
- Condition of existing surfaces and materials

These visual inspections will also help us assess reconfiguration options for existing spaces which may reduce the amount of new square footage needed to meet your long-term needs.



DISTRICT OR1, BENNET ELEMENTARY SCHOOL | BENNET, NE

SCHEMATIC DESIGN

We will conduct a schematic design workshop with appropriate school stakeholders to identify spatial requirements for the Family Consumer Science classroom, and other desired features associated with the restroom and fire alarm system improvements. Using leading-industry design programs, our team will develop three-dimensional design solutions in real time with the workshop participants. This will allow everyone to quickly visualize how the spaces will function and what they will look like. We will also begin to identify potential mechanical, electrical, and structural system solutions. Various options will be created and we will be able to modify these schematic concepts during the workshop based on input from the group. Cost estimates will be developed using our extensive data base of costs for school projects and by consulting with local contractors. Workshops will be facilitated until consensus is achieved on the preferred schematic design solution. It has been our experience that this workshop scenario helps to facilitate timely completion of the schematic design process. Our team will also attend school Board meetings, and help present the schematic design solution for approval.

DEVELOPMENT OF CONSTRUCTION PHASING PLAN

We understand that these projects may be implemented over time as funds become available. Also, while construction may be able to take place during breaks in the school calendar, it is possible that some construction could occur during the school year and that your high school will need to remain operational during this process. Accordingly, a phased implementation plan will be developed for the restroom, Family Consumer Science classroom, and fire alarm system renovations that is prioritized according to need and available funds. Our in-house capabilities allow us to quickly and efficiently develop a plan that takes into account what needs to be done during each phase in a manner that makes the completion of each subsequent phase less disruptive and more cost effective. The Clark Enersen Partners has an excellent track record of accomplishing these objectives on technical infrastructure renovation projects. The integration of our in-house capabilities in architecture, and mechanical, electrical, and structural engineering is the major reason for our success. On a daily basis, our project team can discuss challenges and issues associated with construction staging and phasing. We continually evaluate the impact of design decisions and construction activity on day-to-day operations.

A successful phasing plan should take root during the early stages of design. A clear and concise construction phasing plan will allow the Contractor to do what they do best in a cost effective and expedient manner without putting the building's occupants at risk and with minimal disruptions. We will work closely with the Seward Public School District to identify options for meeting these objectives. This may include keeping existing mechanical, electrical, and utility systems operational during construction and transition. It may be important to identify potential swing spaces and to minimize the number of times that occupants will need to relocate. The ebb and flow of the academic schedule will inform the timing of intensive construction periods. Our team will work with you to identify alternate pedestrian routes and parking spaces. It is recommended that a communication plan be developed to inform students, faculty, and patrons of what to expect and the timing of construction activities. Dust and odor control, as well as methods to provide fire protection during construction, will be evaluated throughout the entire design process. We will also keep in mind issues related to construction staging and the storage of construction equipment. Typically, we color code our phasing plans in both axonometric and spreadsheet form in order to help the Contractor identify the timing of spaces to be renovated.



DAVID CITY PUBLIC SCHOOL, ADDITION AND RENOVATION | DAVID CITY, NE

DESIGN DEVELOPMENT

Once the schematic design plan has been approved, and funds become available for each phase, we will transition into the Design Development phase of each respective project. During this phase, our team will work closely with your identified key representatives to identify specific architectural, interior design, mechanical, electrical, structural, and if necessary, civil engineering systems and solutions. We will also include wall sections and specific size, character, and location of architectural and interior design materials. An estimate of construction costs will concurrently be updated to ensure the project stays on budget.

LIFE CYCLE COST ANALYSIS

When identifying specific systems and materials for each project, we will examine the long-term operational costs of several potential systems and building materials versus start-up costs. “Like” products from multiple vendors will be evaluated in regard to various purchase, performance, and economic data. Next, products will be ranked based on overall costs over a 20-year period and determine the most effective selection. In some instances, it may be more cost effective to specify a system, machine, or material with a higher purchase price because of the estimated savings that may be realized over the anticipated life of the product. We have developed a customized software program to assist in this analysis that is thorough and has proven to be accurate.



LPS, MOORE MIDDLE SCHOOL | LINCOLN, NE

CONSTRUCTION DOCUMENTS

During this phase, we will further refine the design development plans to produce documents suitable for competitive bidding. Our in-house capabilities in each of these disciplines help us to provide thorough and accurate documents that are second-to-none. Few firms match our level of detail. This detail reduces ambiguity and guesswork by the contractor, resulting in near-accurate cost estimates. Our construction documents include as much information and detail as possible to minimize guesswork by the construction administrator.

CONSTRUCTION ADMINISTRATION

We view construction administration as one of the most important services that we provide. Our team will serve as your advocate and work to protect your interests during the entire construction process. This will begin by conducting a pre-construction meeting with the school representatives, members of our design team, and the general contractor. This meeting will establish protocol for all future communication and establish key project milestones. Once construction has begun, we will visit the site on a regular basis, answer questions and resolve conflicts as they arise, review shop drawings and test reports, and help process change orders. We will determine the substantial completion date and issue the Certificate of Substantial Completion. Our construction administrator will communicate with you after each site visit, and issue monthly project progress reports or as needed depending upon the schedule. An 11-month post occupancy review for warranty items will also be conducted.



ELKHORN VALLEY PUBLIC SCHOOLS | TILDEN, NE

INTRODUCTION TO EXPERIENCE

The Clark Enersen Partners has a 73-year history of school design, including 65 projects for 25 school districts in Nebraska in the past 12 years. Through our previous design work on the Seward Middle School, we understand your district's approach to educating your students as well as your expectations for architectural and engineering design.

As shared previously, our firm offers in-house expertise in all of design services necessary for the Seward High School renovation and improvements project—program verification, architecture, interior design, and structural, electrical, and mechanical engineering, and construction administration. This allows us to take a holistic approach to design. All members of the team will be able to meet on a daily basis to evaluate “what if” scenarios and evaluate the impact of architectural solutions on engineering systems. This approach leads to a seamless integration of the building systems through a thorough vetting of the following key school design considerations.

FLEXIBILITY

We understand that having the flexibility to address future changes in technology and teaching methods is an important consideration in school design. We will incorporate as much flexibility into the design as possible. Our team will explore opportunities to integrate power distribution and HVAC systems in such a way as to allow for the easy reconfiguration of spaces when needed.

NATURAL LIGHT AND THE LEARNING ENVIRONMENT

We understand how architecture can help promote effective learning. Abundant natural light, the right colors, and sensitivity to acoustics can all help create a comfortable and engaging environment. Our team designs settings that are light, open, airy, comfortable, and orderly as we understand how these design elements foster interaction and collaboration. We take great care to avoid colors, materials, and configurations that may be perceived as claustrophobic, dark, chaotic, or loud and will also take into consideration the existing color scheme and adapt accordingly.

HIGH-FUNCTIONING SCHOOLS

Our in-house capabilities in architecture, interior design, and engineering will help us design the renovation and improvements to the fire safety systems and ADA design so that they all function in concert. We also use 3-D modeling to help you visualize how systems and spaces work together.

DURABLE AND SUSTAINABLE MATERIALS AND SYSTEMS

We believe in innovation, not experimentation, when it comes to the selection and integration of building systems and materials. Our team has in-depth experience with many sustainable systems, materials, techniques, and technologies and will utilize proven solutions, our creativity, and our experience to integrate innovative solutions as needed. We must all be confident and comfortable with the performance potential of all systems and materials that are selected.

On the following pages we provide examples of our work that incorporates these and other innovative design features.



EXPERIENCE

LINCOLN PUBLIC SCHOOLS FIRE ALARM COMMUNICATOR PROJECT

LINCOLN, NEBRASKA

We worked with Lincoln Public Schools to add provisions for fire alarm communicators at each of the district's schools and administrative facilities. This project entailed detailed field investigations to determine existing equipment capabilities and pathways for new wiring to accommodate the addition of the communicators. Documents were then created for each facility that required new wiring in order to detail the work required and allow the project to be bid. We were able to use multiple staff members to subdivide the district and accomplish the design in a matter of weeks.





LINCOLN PUBLIC SCHOOLS HUMANN ELEMENTARY SCHOOL RENOVATION AND ADDITION

LINCOLN, NEBRASKA

Humann Elementary School is an 80,282-square-foot facility on a 9.76-acre site. Originally built in 1990, the building sustained normal wear and tear, technology became antiquated, and the HVAC systems were no longer energy efficient. As a result, The Clark Enersen Partners was selected to complete a major renovation and expansion to the school. The renovations included improvements to the main office that now features a more secure entrance, a replacement of the existing HVAC system with a new ground source heat pump system, improved technology throughout the building, a new sound enhancement system in each classroom, and new windows. The addition created four new classrooms, a new entry canopy, new furniture and fixtures, and expanded parking. The \$9 million project was completed in time to start the 2017-2018 school year.



Department Legend

- ADMINISTRATION
- ATHLETICS
- CIRCULATION
- CLASSROOM
- FOOD SERVICE
- MECH. ELEC.
- RESTROOM
- SPECIALS
- STORAGE



EXPERIENCE



ARAPAHOE PUBLIC SCHOOLS ADDITION & RENOVATION | FAMILY CONSUMER SCIENCE

ARAPAHOE, NEBRASKA

We recently completed work with Arapahoe Public Schools in Arapahoe, Nebraska on an addition and renovation of their existing facilities. The project included the demolition of the existing high school, renovation of the existing elementary school to be used as the new high school with the replacement of classroom/lab spaces for family consumer science, physical science, and biology, as well as renovations to general purpose classrooms and complete replacement of restrooms for the existing building wing. The 45,000-square-foot addition is comprised of a new elementary classroom wing, administrative area with a secure entrance, new media center, new art room, new resource rooms, a new kitchen and commons as well as a new competition gym. The project was driven by a desire to create a safer and more secure learning environment as well as a desire to improve failing infrastructure in the existing facilities.

The project was supported by a successful \$12.67 million bond issue. The Clark Enersen Partners provided support to the district through the bond campaign. That support included conceptual design of numerous options, presentations at public meetings, assistance with bond campaign materials, assistance with sizing the bond, and help in formulating bond committees. The project scope was derived through input from the school administration, school board, staff, and surveys conducted at public meetings.

EXPERIENCE



LPS, KLOEFKORN ELEMENTARY SCHOOL | LINCOLN, NE



WEST HOLT PUBLIC SCHOOLS | ATKINSON, NE

ADDITIONAL SCHOOL EXPERIENCE

Schuyler Central High School Addition
Elkhorn Valley Public Schools, Renovation & Expansion
David City Public Schools, HVAC Replacement
David City Public Schools, New Weight Room & Commons
West Holt Public Schools, Renovations & Additions
Sterling Public Schools Addition and Renovation
Pleasanton Public Schools, Addition & Renovation
Thayer Central Community Schools, Performance Criteria Development
Twin River Public School, Science, Technology, and Math Distance Learning
Exeter-Milligan Public Schools, High School Expansion & Renovation
Freeman Public Schools, Performance Gymnasium Addition
Seward Public Schools, New Middle School
Lincoln Christian Schools, Master Plan & HVAC Upgrades
Fillmore Central Public Schools, Interior Renovation
Pius X High School, Renovation & Expansion
Friend Public Schools, Gym/Commons Addition & Renovations
Lincoln Public Schools, Kloefkorn Elementary School
Lincoln Public Schools, Beattie Elementary, HVAC & Building Improvements
Lincoln Public Schools, Elliott Elementary Plaza
Lincoln Public Schools, Moore Middle School & Copple Family YMCA
Lincoln Public Schools, Lincoln High, HVAC Upgrade, Addition & Improvements
Lincoln Public Schools, East High, HVAC Upgrade, Addition & Improvements
Lincoln Public Schools, Dawes Middle, CAM Fund Improvements
Lincoln Public Schools, Beechner Field Master Plan & Renovation
Lincoln Public Schools, Yankee Hill School, Renovation & Addition
Hastings Public Schools, Alcott, Longfellow, & Morton Elementary Audits
Hastings Public Schools, New Middle School
Syracuse Public Schools, High School Addition & Renovation
Kearney Public Schools, New Meadowlark Elementary School
Kearney Public Schools, Central Elementary School Improvements
Kearney Public Schools, Northeast Elementary Improvements
Kearney Public Schools, Bryant Elementary School Renovation
Kearney Public Schools, Emerson Elementary School Renovation
Kearney Public Schools, Glenwood Elementary School Improvements

INTRODUCTION TO THE TEAM

By virtue of our PK-12 school specialization, and in-house capabilities in architecture, interior design, and mechanical, electrical, and structural engineering, we are perfectly structured to provide comprehensive design services for the Seward High School renovation project. We are able to cover every aspect, as outlined in the RFP, without having to outsource any professional services, which will result in an efficient and streamlined process. Listed below are our key team members, including their brief approach to services that will be provided.

Tim Ripp, AIA, LEED AP, will lead the team as Project Manager. He is a Senior Principal for the firm, an architect, and Director of Construction Administration. He will be the primary contact for Seward Public Schools, lead all project meetings, coordinate the day-to-day activities of the project team, and oversee the process. He has served in this capacity on virtually all of our PK-12 projects since 2006. His organizational skills, previous PK-12 experience, including work for Seward Public Schools, and knowledge of code/life safety/security requirements make him perfectly suited for this role.

Sarah Janiak, AIA, LEED AP, will work closely with Tim and other members of the team to develop architectural design solutions for the Seward High School renovation and improvement projects. She has been involved in many of our recent school projects including renovation and expansion projects for East Butler Public Schools, Elkhorn Valley Public Schools, and West Point Beemer Public Schools.

Kara Hinrichs, will be our lead interior designer. She has served in this role on a majority of our PK-12 experience over the past eight years. Kara understands how to design learning environments that foster interaction and collaboration. She uses light, color, shapes, and textures to create an engaging, welcoming, and stimulating environment. She understands how to integrate technology with furnishings for easy access and flexibility.

T.J. Schirmer, PE, LEED AP, will be our team's electrical engineer. He will be responsible for lighting, power distribution, and fire alarm/life safety systems. He has been involved in nearly every one of our PK-12 schools projects and has specialized expertise in school technology, power distribution, lighting, and life safety systems. As a Senior Principal in the firm, T.J. has 23 years of experience in electrical engineering design.

Adam Kent will be our lead mechanical and plumbing system designer. He has more than 15 years of experience in HVAC and plumbing system design, and has developed a reputation among school clients and contractors for developing practical and cost-effective mechanical solutions.

Britton Wilson, PE, LEED AP, will also provide mechanical and plumbing engineering services for the Seward High School renovation and improvement projects. His areas of specialization include, but are not limited to, plumbing and specialty piping systems design, hydronic systems design, specifications writing, and cost estimating.

Sandi Davison, PE, will be our lead structural engineer. If needed, she will evaluate and design structural systems to support our architectural and engineering solutions. With more than 20 years of experience, Sandi has a strong understanding of structural systems typically associated with PK-12 construction.

On the following pages, we provide resumes of these key individuals that highlight their relevant experience.

TIM RIPP AIA, LEED AP
Principal-In-Charge, Project Manager

SARAH JANIAK AIA, LEED AP
Project Architect

KARA HINRICHS
Interior Designer

T.J. SCHIRMER PE, LEED AP
Electrical Engineer

ADAM KENT
Mechanical Engineering

BRITTON WILSON PE, LEED AP
Mechanical Engineer

SANDI DAVISON PE
Structural Engineer

MICHAEL RIPP
Construction Administrator



LPS, KLOEFKORN ELEMENTARY SCHOOL | LINCOLN, NE



ARAPAHOE PUBLIC SCHOOL RENOVATION AND ADDITION | ARAPAHOE, NE



TIM RIPP AIA, LEED AP
Project Manager | Architect

Tim is an architect and Senior Principal for the firm. As the Project Manager, he will coordinate the day-to-day activities of the design team and oversee the entire process. He understands the importance of strong communication skills between each design discipline and instinctively knows when to sit down, face-to-face, with the team to work through “what-if” scenarios and devise innovative solutions.

SELECTED EXPERIENCE

- Seward Public Schools, New Middle School - Seward, NE
- Lincoln Public Schools, Humann Elementary School Renovation | Moore Middle School and Copple Family YMCA | Lincoln East and High Schools IAQ Improvements, Renovation, and Addition | Kloefkorn Elementary School | Beattie Elementary Improvements - Lincoln, NE
- Elkhorn Valley Public Schools, Renovation and Addition - Tilden, NE
- District OR1, Palmyra High School Renovation and Addition - Palmyra, NE
- District OR1, Bennet Elementary Renovation and Addition - Bennet, NE
- Arapahoe Public School Renovation and Addition - Arapahoe, NE
- Schuyler Central High School Addition - Schuyler, NE
- Exeter-Milligan Public Schools Addition and Renovation - Exeter, NE
- Freeman Public Schools, Gym Addition and Commons - Adams, NE



SARAH JANIAK AIA, LEED AP
Project Architect

Sarah will serve as Project Architect. She is skilled at solving programmatic issues and developing design options for a variety of project types. She has a keen eye for detail and will be responsible for producing construction documents and coordinating plans with other design disciplines.

SELECTED EXPERIENCE

- Elkhorn Valley Public Schools, Renovation and Expansion - Tilden, NE
- West Point Public Schools, Beemer Public School Athletics Addition - West Point, NE
- Arapahoe Public School Renovation and Addition - Arapahoe, NE
- East Butler Public Schools, Locker Room Addition | Classroom Addition - Brainard, NE
- Leigh Public Schools, Elementary School Addition - Leigh, NE
- David City Public Schools, High School Master Plan - David City, NE
- District OR1, Palmyra High School Sports Complex - Palmyra, NE
- Schuyler Central High School Addition - Schuyler, NE
- Pius X High School, West Classroom Addition - Lincoln, NE
- Lincoln Christian School, High School Addition - Lincoln, NE
- North American Martyrs School Addition - Lincoln, NE



PLEASANTON PUBLIC SCHOOLS ADDITION | PLEASANTON, NE



PERSONNEL

ELKHORN VALLEY PUBLIC SCHOOLS | TILDEN, NE



KARA HINRICHS

Interior Designer

Kara is an interior designer with eight years of experience and has worked on many of our K-12 school projects. She uses light, color, shapes, and textures to create optimum learning conditions. She is knowledgeable of materials and finishes, such as low-emissions paint, cabinets, carpet, and counter tops that are both durable, and healthier for children.

SELECTED EXPERIENCE

- Seward Public Schools, New Middle School - Seward, NE
- Arapahoe Public School Renovation and Addition - Arapahoe, NE
- Elkhorn Valley Public Schools Addition and Renovation - Tilden, NE
- District OR1, Palmyra High School Renovation and Addition - Palmyra, NE
- District OR1, Bennet Elementary Renovation and Addition - Bennet, NE
- Lincoln Public Schools, Humann Elementary School Renovation | Moore Middle School and Copple Family YMCA | Kloefkorn Elementary School - Lincoln, NE
- Pleasanton Public Schools Renovation and Addition - Pleasanton, NE
- Twin River Public Schools Addition - Genoa, NE
- Exeter-Milligan Public Schools Addition and Renovation - Exeter, NE
- Schuyler Central High School Addition - Schuyler, NE



T.J. SCHIRMER PE, LEED AP

Electrical Engineer

As Co-Director of our firm's Engineering Department and with 28 years of experience, T.J. is well versed in security system technology, value engineering, life-cycle cost analysis, and how to design systems for future flexibility. He has in-depth experience in school design and understands the importance of incorporating systems that are highly functional, energy efficient, and easy to maintain.

SELECTED EXPERIENCE

- Seward Public Schools, New Middle School - Seward, NE
- Arapahoe Public School Renovation and Addition - Arapahoe, NE
- Elkhorn Valley Public Schools Addition and Renovation - Tilden, NE
- Lincoln Public Schools, Fire Alarm Communicator Project | Moore Middle School and Copple Family YMCA | Lincoln East and High Schools IAQ Improvements, Renovation and Addition | Beattie Elementary School Renovation | Kloefkorn Elementary School - Lincoln, NE
- District OR1, Palmyra High School Renovation and Addition - Palmyra, NE
- District OR1, Bennet Elementary Renovation and Addition - Bennet, NE
- Schuyler Central High School Addition - Schuyler, NE
- Exeter-Milligan Public Schools Addition and Renovation - Exeter, NE

PERSONNEL



WEST HOLT ELEMENTARY SCHOOL | WEST HOLT, NE



FRIEND PUBLIC SCHOOL ADDITION & RENOVATION | FRIEND, NE



ADAM KENT *Mechanical Engineering*

Adam has vast mechanical system design experience and will be responsible for HVAC and plumbing systems. He has served as a mechanical designer for all our school projects over the past 10 years. Adam is known for his hands-on approach to design and follow up support. He is skilled at identifying energy efficient systems to help reduce a school's ongoing operational costs.

SELECTED EXPERIENCE

- Seward Public Schools, New Middle School - Seward, NE
- Lincoln Public Schools, Humann Elementary School Renovation | Moore Middle School and Copple Family YMCA | Lincoln East and High Schools IAQ Improvements, Renovation and Addition | Kloefkorn Elementary School | Beattie Elementary School Renovation - Lincoln, NE
- Elkhorn Valley Public Schools Addition and Renovation - Tilden, NE
- District OR1, Palmyra High School Renovation and Addition - Palmyra, NE
- District OR1, Bennet Elementary Renovation and Addition - Bennet, NE
- Arapahoe Public School Renovation and Addition - Arapahoe, NE
- Schuyler Central High School Addition - Schuyler, NE
- Exeter-Milligan Public Schools Addition and Renovation - Exeter, NE



BRITTON WILSON PE, LEED AP *Mechanical Engineer*

Britton will provide mechanical engineering services. He has provided a variety of services for all stages of a project, including planning, design, and construction administration. The types of services include, but are not limited to plumbing and specialty piping systems design, hydronic systems design, specifications writing, and cost estimating. Britton is a LEED Accredited Professional and is instrumental in developing practical and affordable sustainable design solutions.

SELECTED EXPERIENCE

- Seward Public Schools, New Middle School - Seward, NE
- Lincoln Public Schools, Lincoln High School, Renovation and Addition | East High School Renovation and Addition | Kloefkorn Elementary School - Lincoln, NE
- West Holt Public Schools, New Elementary School and Middle/High School Renovation - Atkinson, NE
- Friend Public Schools Renovation and Addition - Friend, NE
- Elkhorn Valley Public Schools Addition and Renovation - Tilden, NE
- Fillmore Central Public School, Science Room Renovation | Kitchen Hood - Geneva, NE
- Freeman Public School, Addition and Improvements - Freeman, Nebraska
- Lincoln Christian School, HVAC Upgrades - Lincoln, NE



SEWARD MIDDLE SCHOOL | SEWARD, NE



LPS, MARILYN MOORE MIDDLE SCHOOL | LINCOLN, NE



SANDI DAVISON PE

Structural Engineer

Sandi has a unique ability to assess and anticipate challenges as they relate to renovations and additions. She understands the importance of addressing building challenges discovered during investigation or construction in the most timely manner possible. She has worked on many of our school projects in the past 10 years and has a strong understanding of structural systems typically associated with PK-12 construction.

SELECTED EXPERIENCE

- Seward Public Schools, New Middle School - Seward, NE
- Arapahoe Public School Renovation and Addition - Arapahoe, NE
- Elkhorn Valley Public Schools Addition and Renovation - Tilden, NE
- District OR1, Palmyra High School Renovation and Addition - Palmyra, NE
- District OR1, Bennet Elementary Renovation and Addition - Bennet, NE
- Pleasanton Public Schools Addition - Pleasanton, NE
- Schuyler Central High School Addition - Schuyler, NE
- Lincoln Public Schools, Beattie Elementary Renovation | Lincoln High and Lincoln East High Schools, Comprehensive Renovation and Addition - Lincoln, NE
- Friend Public Schools Renovation and Addition - Friend, NE



MICHAEL RIPP

Construction Administration

Michael will provide Construction Administration services. He will make regular site visits during construction, provide written and verbal follow-up with Seward Public Schools, and review shop drawings and other paperwork. He will document all requests for information, architects supplemental instruction, and proposal requests.

SELECTED EXPERIENCE

- Seward Public Schools, Middle School - Seward, NE
- Arapahoe Public School, Addition & Renovation - Arapahoe, NE
- Lincoln Public Schools, System-wide Technology and Security Upgrades | Humann Elementary Renovation | Marilyn Moore Middle School & Copple Family YMCA | Kloefkorn Elementary School - Lincoln, NE
- East Butler Public Schools, Weightroom Renovation | Classroom Addition - Brainard, NE
- David City Public Schools, Gymnasium & Weightroom Addition | Elementary Addition - David City, NE
- Pleasanton Public Schools Addition - Pleasanton, NE
- Elkhorn Valley Public Schools Addition and Renovation - Tilden, NE

Nebraska State Board of Engineers and
Architects
P.O. Box 95165; Lincoln, NE 68509
Phone: (402) 471-2021; Fax: (402) 471-0787
E-mail: NBEA.office@nebraska.gov

THE CLARK ENERSEN PARTNERS INC
1010 LINCOLN MALL STE 200
LINCOLN NE 68508-2883

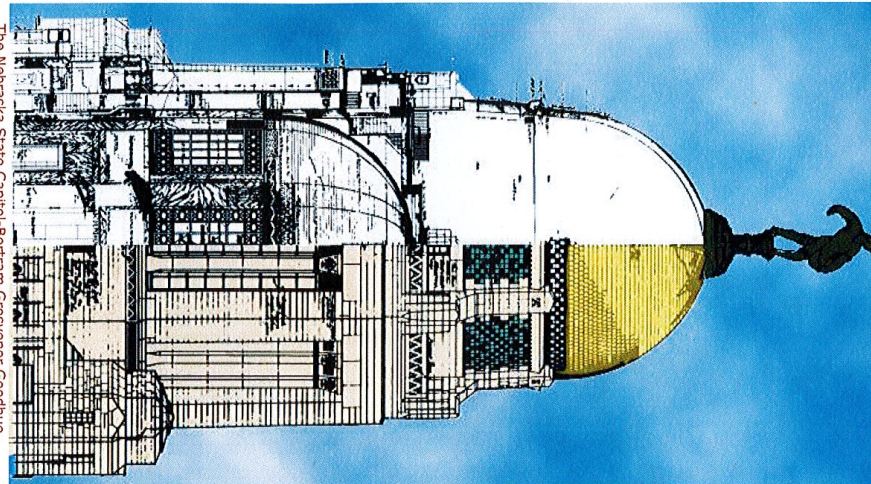


**Renewed
1/3/2018**

CERTIFICATE OF AUTHORIZATION

NEBRASKA STATE BOARD OF
ENGINEERS AND ARCHITECTS

The Nebraska State Capitol-Bertram Grosvenor Goodhue,
Architect



Organization: **The Clark Enersen Partners Inc**
Authorized to Practice Engineering: **Yes**
Authorized to Practice Architecture: **Yes**
Engineer in Responsible Charge: **Ted J. Schirmer E-8623**
Architect in Responsible Charge: **Robert Alan Olson A-1592**
Effective Date: **1/28/1998**
Date of Expiration: **1/28/2020**

Certificate Number: **CA0029**
Payment Date: **1/3/2018**
Payment Amount: **\$250** Receipt # **86669**

* Please Report any change in status of these persons within 30 days of occurrence.

THE CLARK ENERSEN PARTNERS' REFERENCES

Tangible evidence of our success on public school projects is the fact that every PK-12 client we have worked with for the past 12 years can be used as a reference. Few firms can say that, and we are very proud of the strong partnerships we have established. As per your request, we provide you with the following three references.

Mr. Scott Wieskamp

Director of Facilities
Lincoln Public Schools
402.436.1072
swieska@lps.org

Dr. George Griffith

Superintendent
Arapahoe Public Schools
308.962.5458
george.griffith@arapahoewarriors.org

Mr. Bill McAllister

Former Superintendent, West Holt Public Schools
Current Superintendent, West Point Public Schools
402.372.5860
wmcallister@wpcadets.org

LINCOLN CHRISTIAN SCHOOL | LINCOLN, NE



COST OF SERVICES

We understand that the budget for the Seward High School Renovation and Improvement projects are limited. Accordingly, we propose to provide architecture, interior design, and mechanical, electrical, and structural engineering, and construction administration services on an HOURLY NOT TO EXCEED/PREDETERMINED MAXIMUM FEE basis. At this point in the process, we do not know the exact scope of design services, therefore we are unable to calculate a predetermined maximum amount. We anticipate that amount to be approximately EIGHT PERCENT (8%) OF CONSTRUCTION COSTS. Once we have a better understanding of the total scope of work, we can estimate the assumed construction costs and design service associated with the improvements to the fire alarm system, the restrooms, and the family consumer science area, and establish the predetermined maximum fee amount. We understand that each scope item may need to be bid and possibly constructed separately to fit within the overall district budget. We would be happy to discuss the fees associated with our services if we are fortunate enough to be selected.

PLEASANTON PUBLIC SCHOOL | PLEASANTON, NE





The
Clark
Enersen
Partners

YOUR
ATTITUDE
DETERMINES
YOUR
DIRECTION.